

# Tennessee Funding Review Engagement

*Suburban Districts, Municipals, and Fast-Growing  
Communities Subcommittee*

December 10, 2021 | 12 p.m. CT | Online

# Statement

The Tennessee Department of Education is excited to work with you on this opportunity to discuss the State's formula for funding public education. Before we begin, the Department would like to remind you of the following:

- Conversations on this topic are not intended to reflect on the current BEP funding formula. The current BEP funding formula will remain in place until a new funding formula is recommended to and approved by the Tennessee General Assembly.
- The public is encouraged to submit comments in writing to ensure that all communications are thoroughly documented and can be reviewed and considered in the future.
- Public comment is encouraged to focus on developing a new funding formula, rather than revising the current funding formula. Consider what should be funded in a new funding formula and at what level.
- Subcommittees will be responsible for reviewing public comment and making recommendations for what should be included in a new funding formula.
- While all committees, subcommittees, and members of the public should feel free to communicate openly, documents and records may be subject to public inspection pursuant to the Tennessee Public Records Act and may be publicly posted or otherwise made available .
- All recommendations that are submitted by committees and subcommittees will be reviewed and considered, but not all recommendations will ultimately be included in the proposed new funding formula.



# Agenda

- Welcome and Call to Order
- Statement
- Roll Call and Attendance
- Discussion: Follow-ups from Meeting #2
- Create List of Resource Needs and Categorize (include feedback on the structure)
- Next Meeting Details



# Review: Meeting #2 Follow-ups

# Friendly Reminders

- To maximize your experience on the committee, please make sure to review the PPT deck that was sent several weeks ago.
- It is **strongly encouraged that you engage with your stakeholder communities between meetings**. Solicit as much feedback as possible on the recommendations and make sure you incorporate into the subcommittee discussion what you hear and what you read in submitted public comment.
- There are no limitations on who you talk to, when, for how long, etc.



# Your Expertise

- Each member of the committees carry expertise. You don't have to be a school finance expert or a district official to contribute to the process.
- In fact, it is important that we reflect as many viewpoints as possible to inform a funding strategy. For example, the business community and higher education can identify what they need in PK-12 graduates and what different or additional supports might be warranted to graduate more prepared students. Families are experts in what their children might need to thrive in school and what support they need at home.

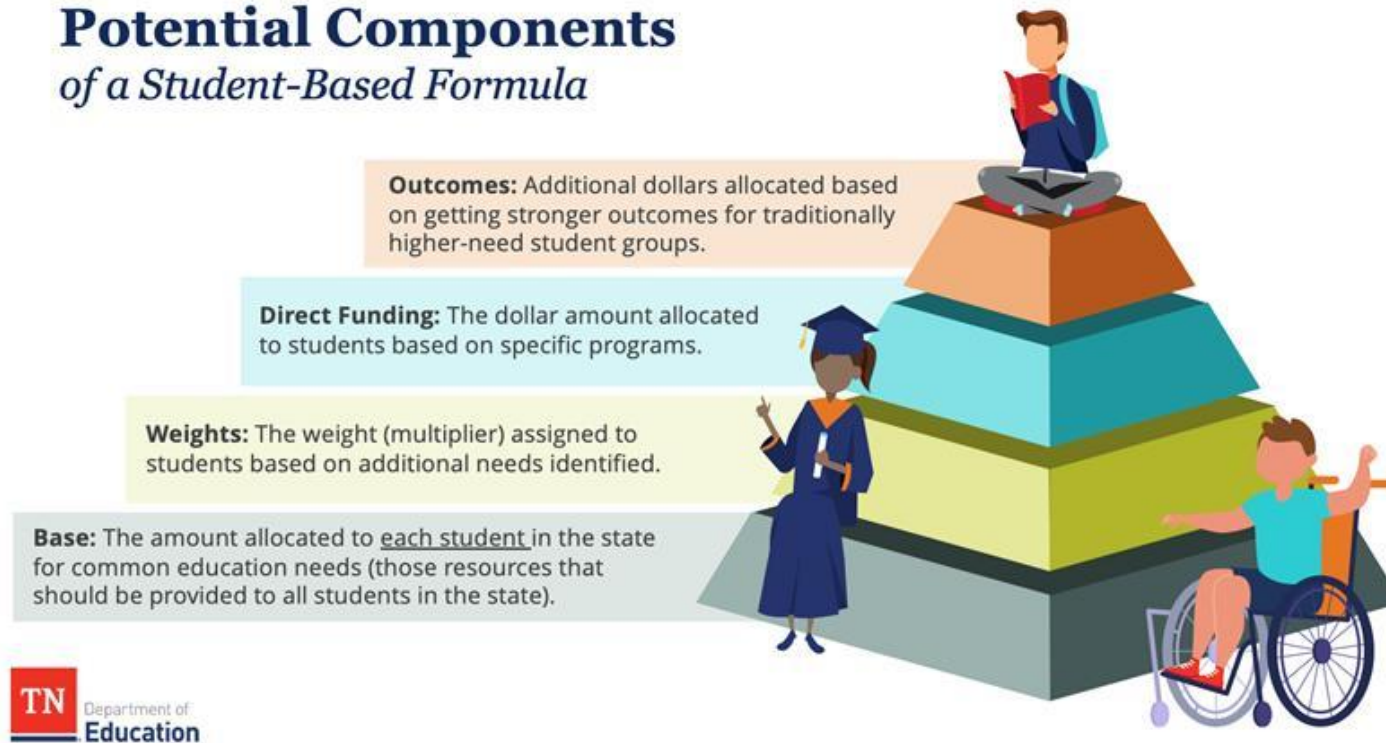


# Feedback Summary

Feedback Consolidated for  
Subcommittee Comment and Review

# Overall Feedback Received (General)

## Potential Components of a Student-Based Formula



- Requested: District should not receive less state funding than they receive through the current BEP.
- Requested: Maintain flexibility for local district budgeting.
- Requested: Ensure that whatever is currently funded outside of the BEP is included in a new formula.
- Requested: The local match component should be stable (what it would be under the BEP) for 3-5 years.



# Base

The feedback for the **base** includes the content currently being discussed in subcommittees (ie. the resources you believe are critical to include in a state formula).

Below are the resources that have been consistently named in public feedback. These bullets only identify statewide trends to be considered in the feedback ultimately provided by the subcommittee.

- Nurses (either at every school OR at the nationally recommended ratio)
- Counselors (either at every school OR at the nationally recommended ratio)
- School Psychologists (at the nationally recommended ratio)
- Teacher Salaries and Benefits
- Flexibility for Facility Funding and/or Deferred Maintenance

In your subcommittee, please provide feedback on the components of this list that you support, would add or change, or any other considerations you have on this topic. Again, this would be in addition to the other resources your subcommittee may consider and prioritize.

# Weights

The following are the areas that received the most positive feedback in terms of what should be **weighted**:

- Economically Disadvantaged and Concentration of Poverty
- Students with Disabilities (with tiers based on the cost to provide services)
- English Learners (rec. to include tiers based on English proficiency)
- Rural
- Sparsity
- Fast Growing
- Charter Enrollment

Areas that have not received as much feedback that had previously been considered for weights include: gifted, dyslexia, small LEA size, K-2 small class size weight.

In your committees, please provide feedback on weights you support, would add or change, or any other considerations you have on this topic. Information was provided in the ECS link on what other states have chosen to weight.

# Additional Dollars

The following are the areas that received the most positive feedback in terms of what may be considered for **additional funding**:

- Financial Literacy
- Middle School CTE
- Innovative High School Models (IHS, STEAM, P-TECH)
- Extended School Year
- RTI
- High Dosage Tutoring

In your committees, please provide feedback on the additional funding bullets you support, would add or change, or any other considerations you have on this topic. As a reminder, this section would be for areas that are not funded for all students (base) and are not included in a weight. Examples of existing funding that would be applied to this category: ACT Retake, 4 Dual Credit Courses, Summer Programming

# Outcomes

The following are the areas that received the most positive feedback in terms of what may be considered for **outcomes**:

- Early Postsecondary Opportunity (EPSO) Completion – earning dual credit or dual enrollment credits (for all students or only for economically disadvantaged students, students with disabilities, and English learners)
- AP Course Completion and/or Passing (for all students or only for economically disadvantaged students, students with disabilities, and English learners)
- Earning Industry Certificates or Certification
- Work-based Learning Completion Metric
- Closing the Achievement Gap (multiple ideas on measurement)
- Reading proficiency (multiple ideas on measurement)
- Differentiated compensation support

In your subcommittee, please provide feedback on the components of this list that you support, would add or change, or any other considerations you have on this topic.

# Discussion

Create List of Resource Needs and  
Categorize

# General Overview

Please list **specific resources that you would like to see incorporated into the funding formula.** (In other words, what resources do you think are most important so that the cost of those resources can be included. It does not mean a district **MUST** spend money in a certain way, only that they would be funded to do so). Please indicate whether each resource is a:

- **Must Have:** Those resources required as a result of federal and/or state law, for safety, or similar.
- **Should Have:** Those resources that may not be mandatory but are essential to ensure the student or student group receives access to a quality education.
- **Nice to Have:** Those resources that are not mandatory and not essential, but (1) may provide a clear and added benefit to students and (2) have a clear return on the investment related to student achievement and future success.
- **Long Shot:** All other resource ideas.

# Process

- The chair will facilitate **idea sharing and discussion**.
- This is a continuation of Meeting #2 **discussion and brainstorm** based on your experience and expertise, feedback you've received and public comment.
- The most important piece is to ensure **every resource is listed and provisionally categorized** into one of the four areas.
- **You will revisit this list** and refine it over the next several meetings. Part of the engagement in between meetings will be to discuss the recommendations and solicit additional feedback.

# Next Meeting Details

- January 7, 2022
- 12 p.m. CT
- Online
- Topic: Discussion, Costing and Prioritizing Feedback

