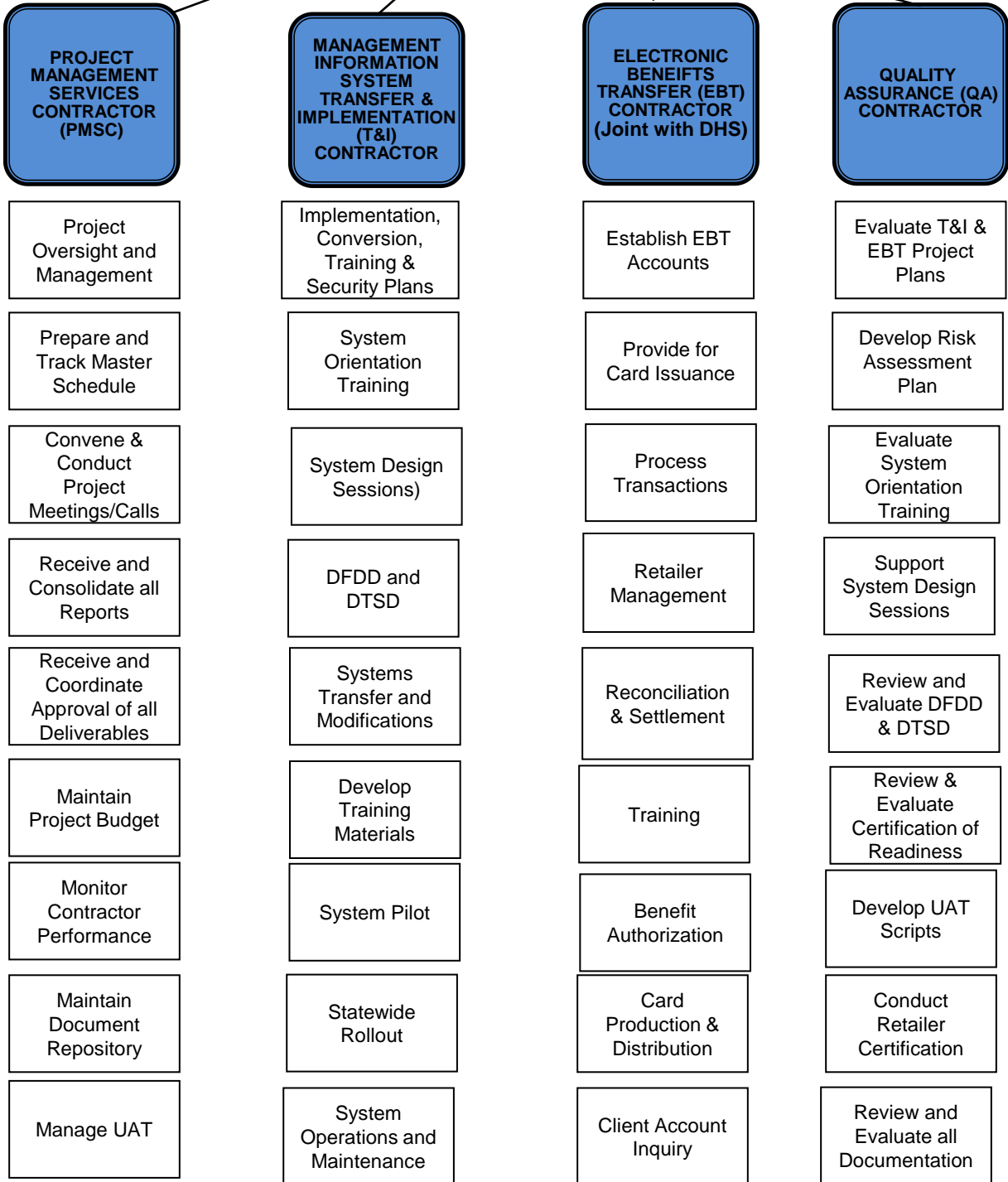


Tennessee Department of Health

TNWIC CONTRACTS FUNCTIONAL STRUCTURE



WIC – The Special Supplemental Nutrition Program for Women, Infants and Children
 TNWIC – The new WIC Management & Information System (MIS) with Electronic Benefits Transfer (EBT)
 DFDD – Detailed Functional Design Document
 DTSD – Detailed Technical Specifications Document
 UAT – User Acceptance Test
 DHS – Department of Human Services

This chart represents the State's current anticipated responsibilities of each contractor and is subject to change.

TNWIC CONTRACTOR RESPONSIBILITIES BY PROJECT PHASES

	<u>T & I</u>	<u>QA</u>	<u>PMSC</u>	<u>EBT</u>	<u>STATE</u>
1. Project Initiation, Planning & Management	P	E (Risk Mgmt Plan)	L	P	P
2. System Design	L	E	M	--	P
3. System Transfer, Modification & Testing	L	E	M	--	P
4. UAT	P	E & L (Scripts)	L	P	P
5. Pilot	L	E	M	L	P
6. Data Conversion & Rollout	L	E	M	L	P
7. Operations; Maintenance & Initial Warranty	L	--	P	L	P
8. Project Closure & Transition	P	E	L	P	P
9. Ext. Warranty & Optional Oper. Periods	L	--	--	--	P

L = Lead
P = Participate
M = Monitor
E = Evaluate

T&I – MIS Transfer and Implementation Contractor
QA – Quality Assurance Contractor
PMSC – Project Management Services Contractor
EBT – Electronic Benefits Transfer Processor

This chart represents the State's current anticipated responsibilities of each contractor and is subject to change.