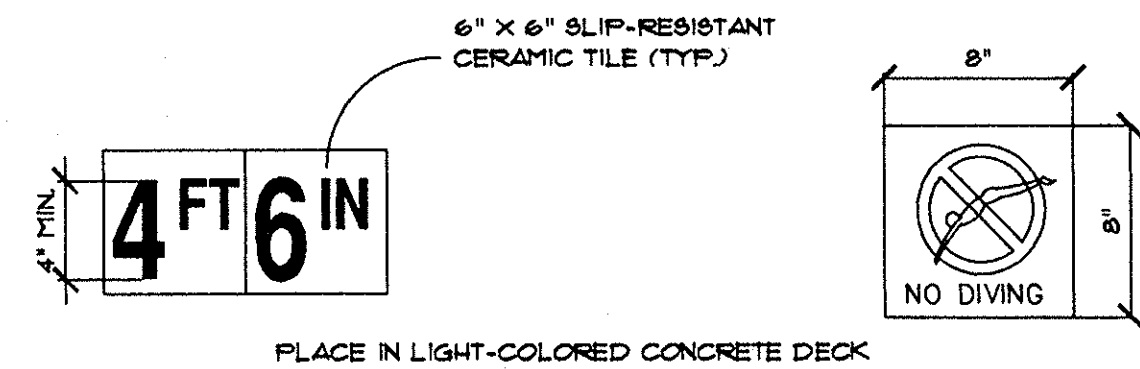


WEDGE ANCHOR & ESCUTCHEON DETAILS

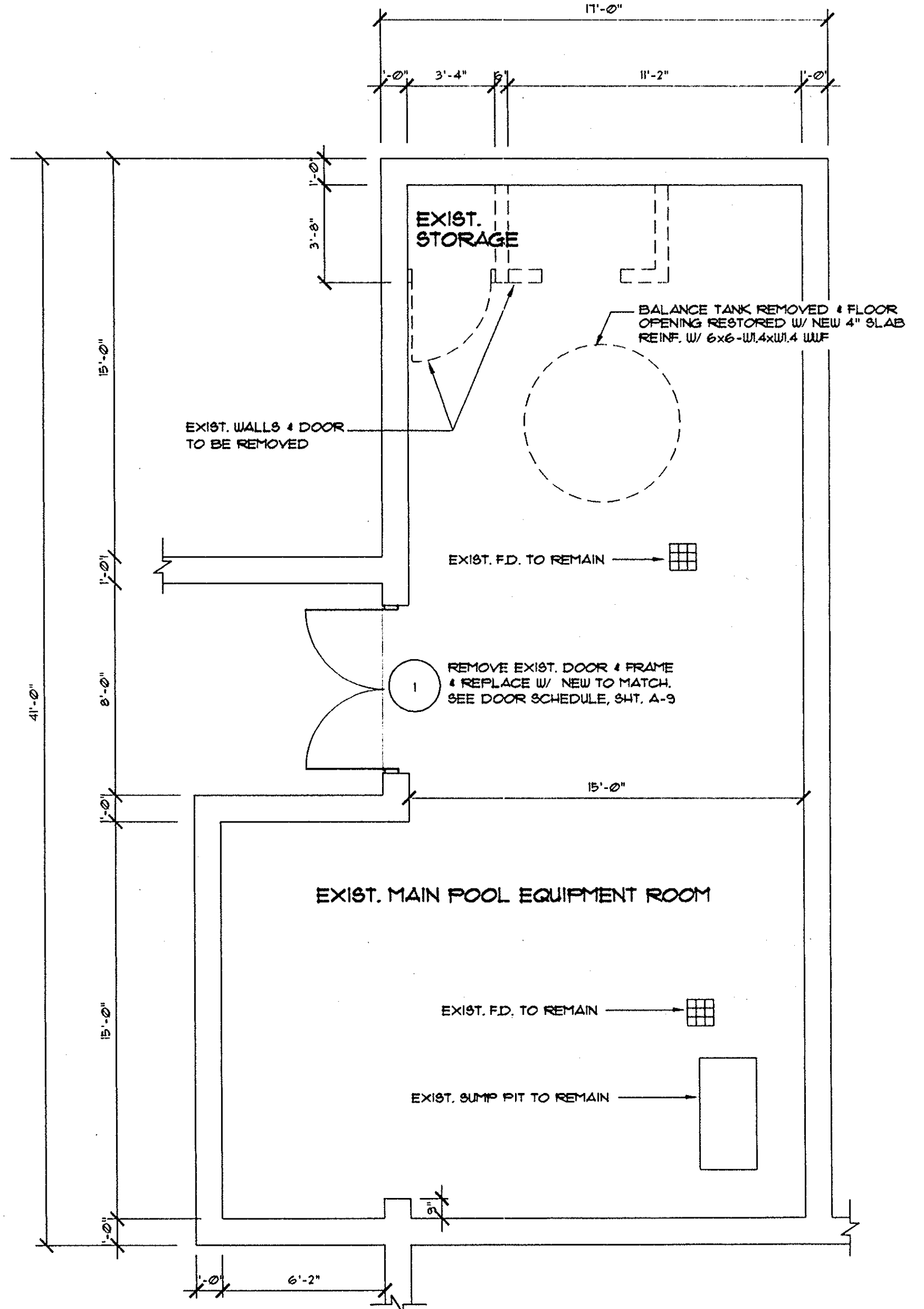
N.T.S.



TYP. DEPTH MARKERS @ DECK

N.T.S.

DEPTH MARKER SCHEDULE			
QTY	DEPTH	QTY	DEPTH
6	1 FT 6 IN *	2	5 FT
4	3 FT	2	6 FT
5	3 FT 6 IN	2	8 FT
2	4 FT	2	10 FT
2	4 FT 6 IN	1	11 FT
* NOTE - ALL 1'-6" DEPTH MARKERS LOCATED AROUND BABY POOL		12	NO DIVING

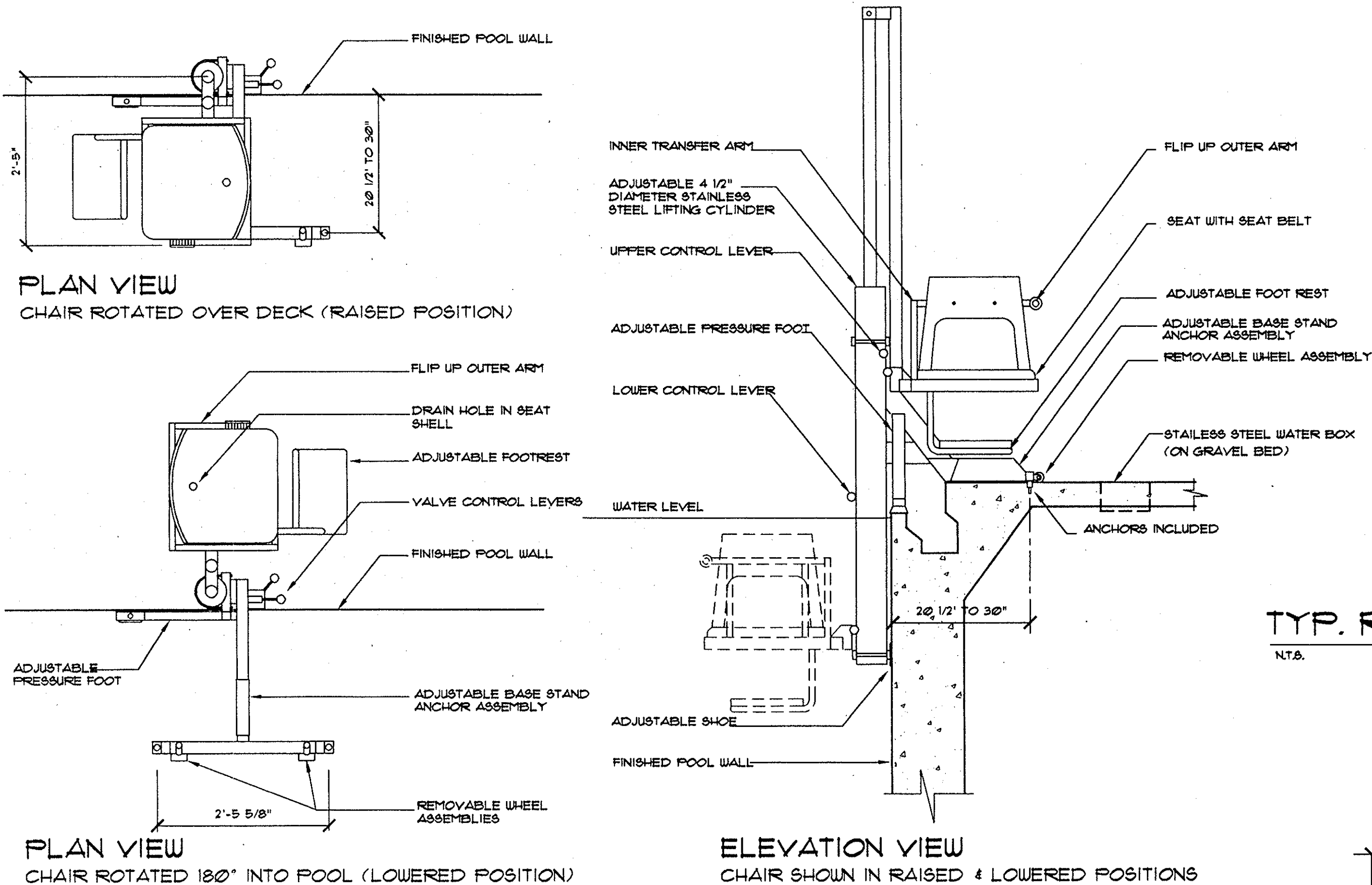


MAIN POOL EQUIPMENT ROOM

SCALE: 1/4"=1'-0"

NOTES:

1. UNLESS OTHERWISE NOTED ALL EQUIPMENT SHALL BE NEW. REF. TO MECH. & ELECT. PLANS FOR NEW EQUIPMENT.
2. GENERAL CONTRACTOR TO FIELD VERIFY ALL DIMENSIONS PRIOR TO COMMENCING WORK.



PORTABLE HANDICAPPED CHAIR LIFT DETAILS

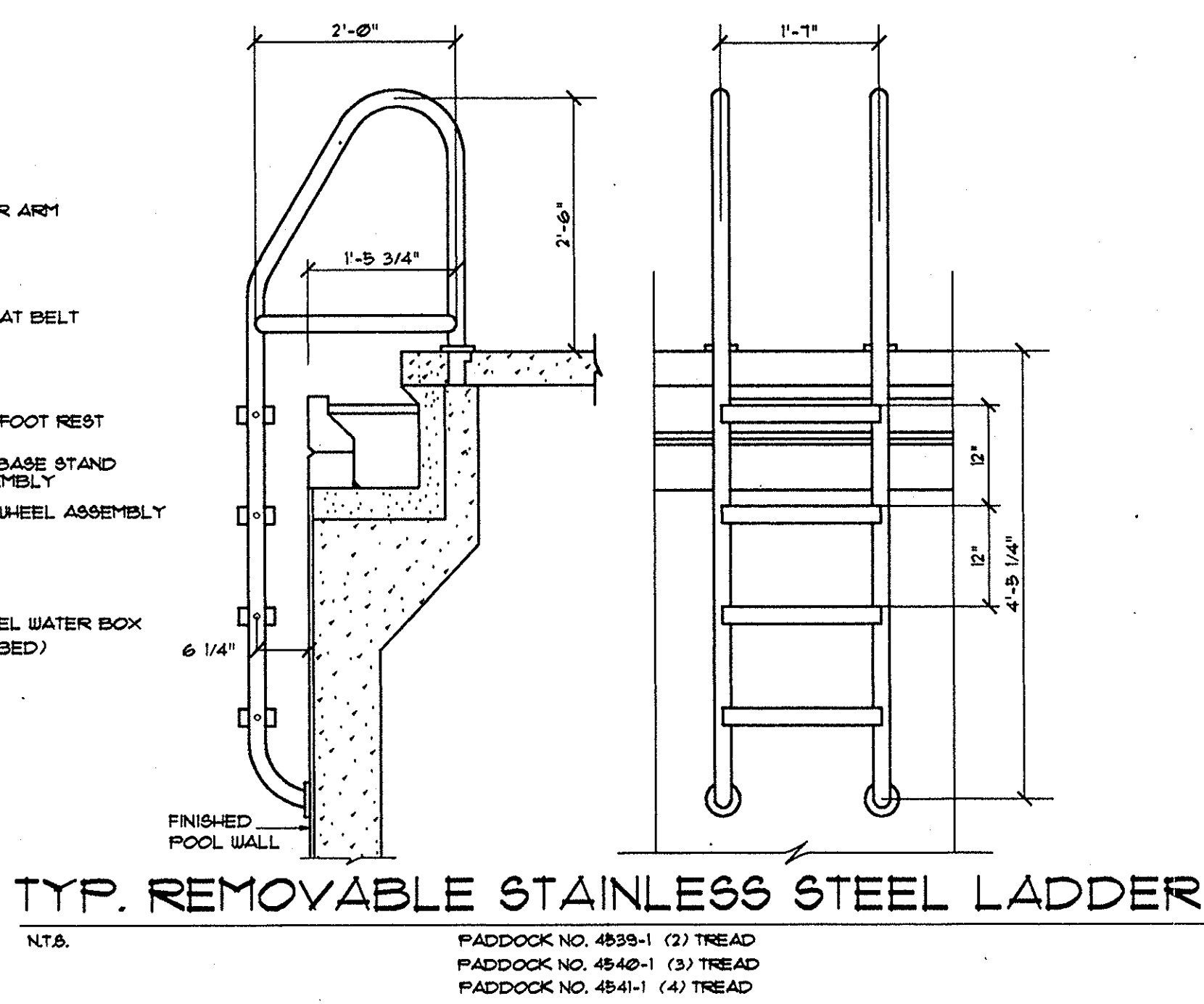
N.T.S.

SPECTRUM SWIM-LIFT II SPECIFICATIONS:

THE SPECTRUM SWIM LIFT II MODEL SL-325 SHALL BE A SELF OPERATED WATER POWERED LIFT CAPABLE OF LIFTING 400 LBS. UNIT SHALL BE POWER UP AND GRAVITY DOWN WITH ADJUSTABLE MOUNTING HARDWARE TO ACCOMMODATE A VARIETY OF DIFFERENT GUTTER CONFIGURATIONS. UNIT SHALL BE TYPE 304 STAINLESS STEEL CONSTRUCTION WITH AN ELECTRO-POLISHED FINISH. SEAT TO BE 19" WIDE AND SET AT 17" HIGH FROM THE FACTORY AND INCLUDE A SEAT BELT, INNER TRANSFER ARM, FLIP UP OUTER ARM, AND ADJUSTABLE FOOTREST. LIFT SYSTEM SHALL BE CAPABLE OF WITHSTANDING A 1200 LB. STATIC LOAD WITH NO PERMANENT DEFORMATION OF ANY COMPONENT. CHAIR TO TRAVEL 42" ALLOWING IT TO BE SUBMERGED AT LEAST 18" INTO THE WATER AND ROTATE 180°. CONTROLS TO BE LOCATED ADJACENT TO CHAIR IN BOTH STOP POSITIONS. THE LIFT SHALL INCLUDE A REMOVABLE WHEEL ASSEMBLY FOR PORTABILITY. ALL STRUCTURAL COMPONENTS SHALL CARRY A 5 YEAR WARRANTY.

WATER BOX SPECIFICATIONS:

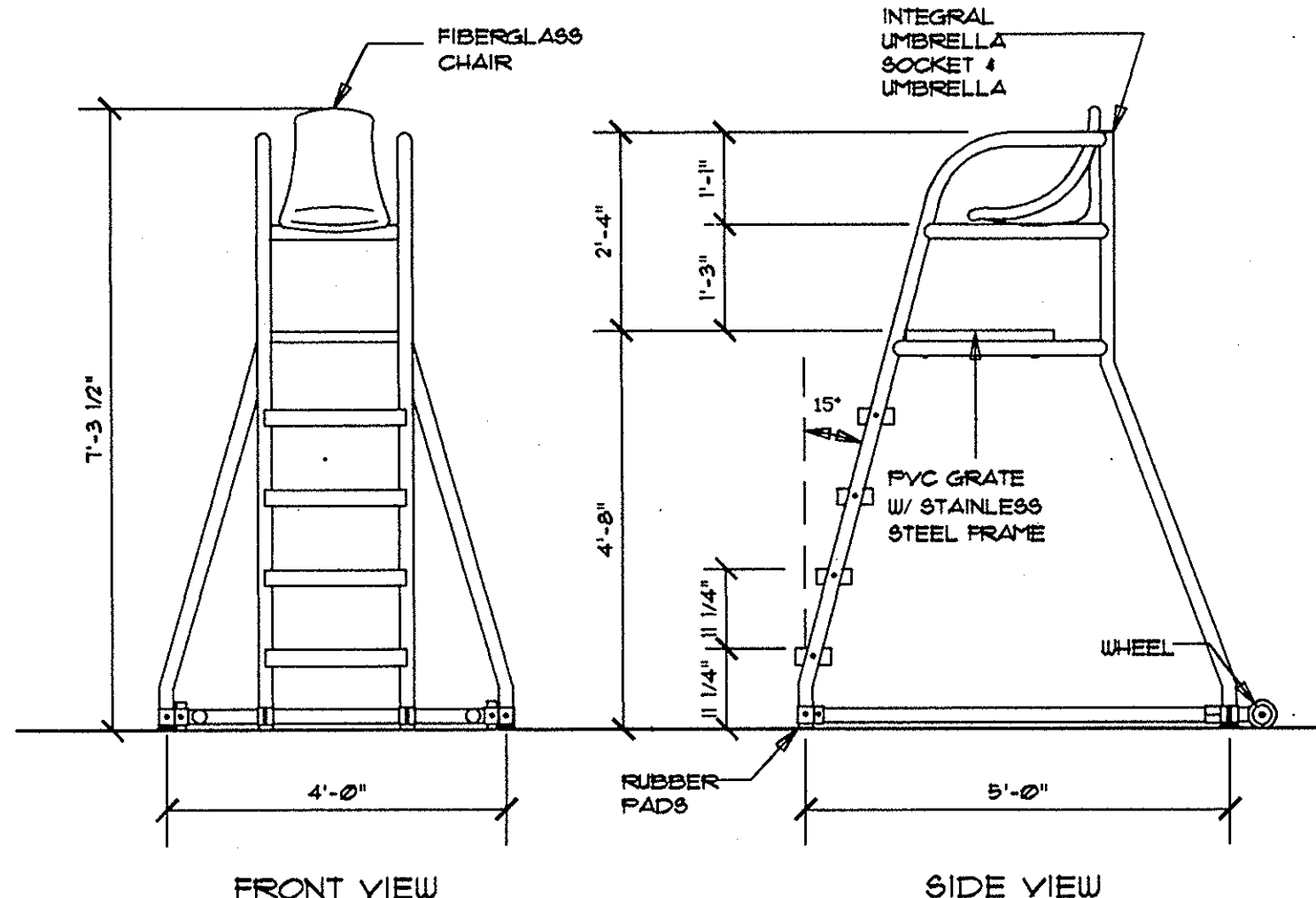
BOX SHALL BE 12 GA STAINLESS STEEL. IT SHALL HAVE A 1 1/8" DIAMETER HOLE IN THE SIDE FOR THE SUPPLY LINE. THE LID SHALL BE FABRICATED FROM 3/16" TYPE 304 STAINLESS STEEL. A HOLE 1 1/8" DIAMETER IN CENTER OF LID FOR HOSE PASSTHRU. A DRAIN HOLE WITH A REMOVABLE PLUG WILL BE PLACED IN THE BOTTOM. LID SECURED TO THE BOX WITH FOUR STAINLESS STEEL 5/16" BUTTON HEAD SCREWS. PROVIDE REMOVABLE FLUSH PLUG WITH GASKET FOR BOX TOP HOLE. PROVIDE GASKET FOR BOX TOP.



TYP. REMOVABLE STAINLESS STEEL LADDER

N.T.S.

- PADDOCK NO. 4898-1 (2) TREAD
- PADDOCK NO. 4842-1 (3) TREAD
- PADDOCK NO. 4841-1 (4) TREAD



6' MOVABLE LIFE GUARD CHAIR

N.T.S.

PADDOCK NO. 4101-6

NOTE - FURNISH ONE UMBRELLA PER EACH LIFE GUARD CHAIR (TYP. OF 4)

DISTRIBUTION RECORD:

planning
associates, inc.
architects
1112 McALLIE AVENUE
CHATTANOOGA, TN 37404
423-822-5121

REPLACE SWIMMING POOL
NORRIS DAM STATE PARK
LAKE CITY, TENNESSEE
SBC # 126/063-01-97A

DATE: 10/04/00
JOB #: 371
SHEET #: A-4

AS-BUILT