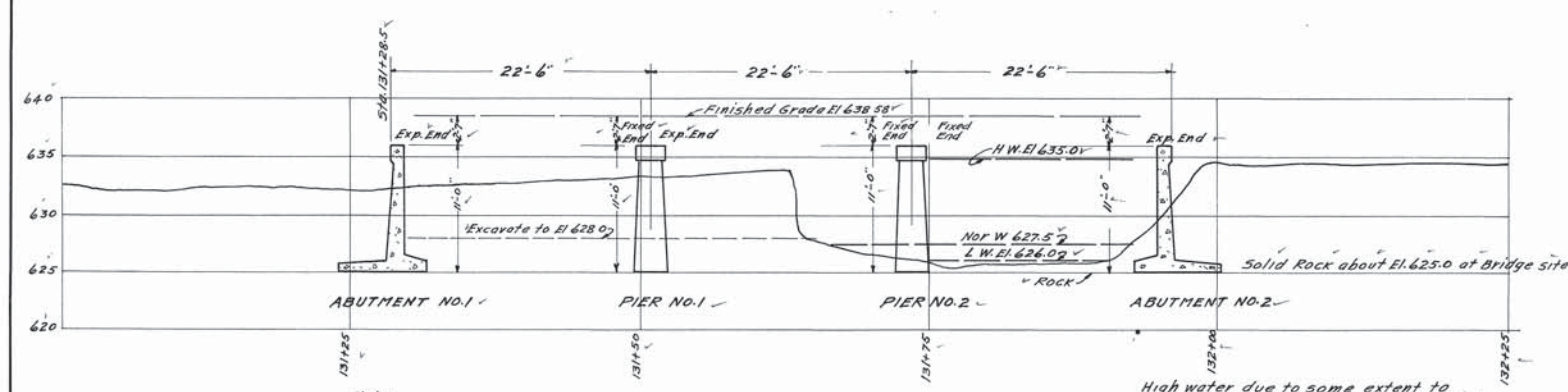


FED. ROAD DIST. NO.	STATE	FED. AID PROJ. NO.	FISCAL YEAR	SHEET NO.	TOTAL SHEETS
6	TENN.	49	1922	40	75

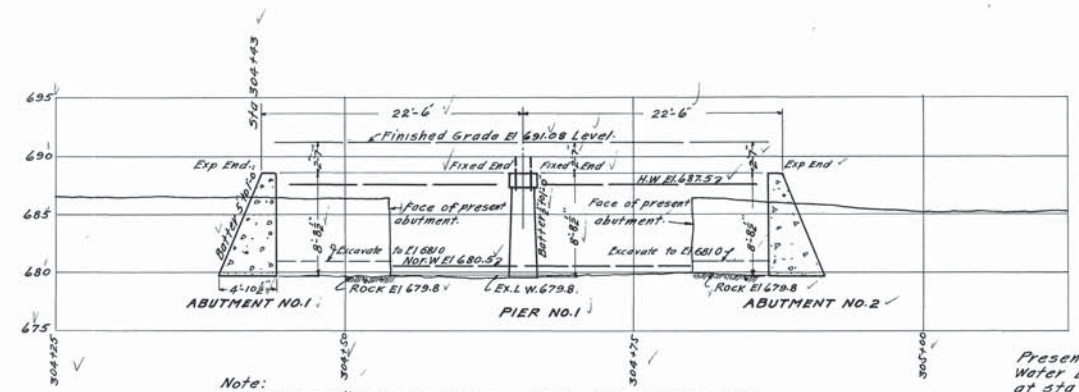


Note:
Place 3" tile drains 5'-0" c/c in abutment and wingwalls at lowest point practicable for good drainage.

For details of substructure see Drawing D-0-52 and D-1-126.
For details of Handrail see Drawing D-0-101.
For details of Superstructure see B.P.R. Drawing G-265 20'-0" Span, 20'-0" Roadway.

High water due to some extent to back water from Stone River 2 1/2 miles downstream. Old bridge was washed out 6 mos. ago (June 1919) due to not enough waterway. Drainage Area 6 sq. mi. (hilly). No large drift, no ice, no scour. Stream velocity L.W. 20 ft. sec.

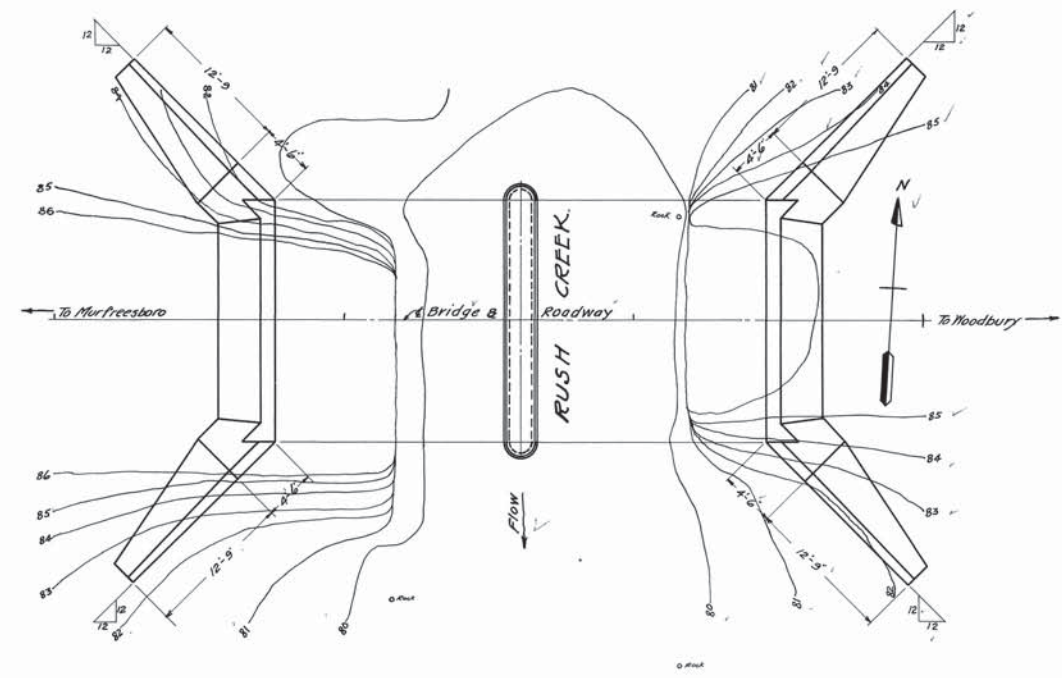
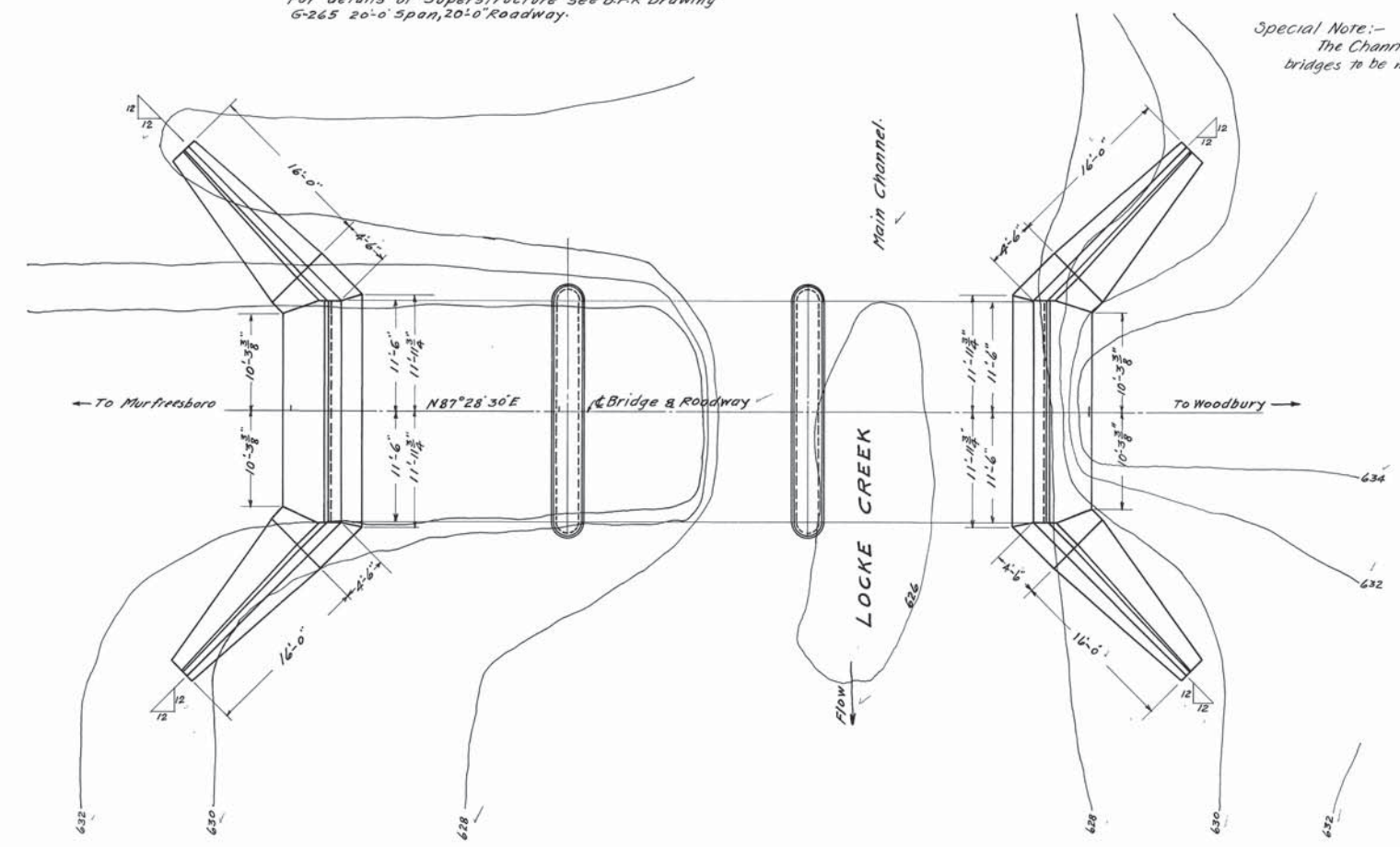
Special Note:-
The Channel excavations under these bridges to be made by the road contractor.



Note:
Place 3" tile drains 5'-0" c/c in abutments and wingwalls at lowest point practicable for good drainage.

For details of substructure see Drawing D-1-127.
superstructure see B.P.R. Drawing G-265.
Standard Concrete Deck Girder Bridges, Span 20'-0", Roadway 20'-0".
For details of Handrail see Drawing D-0-101.

Present structure, Wood 27' Span 6' clearance. Water backs up and overflows Road at sta 305.5 to depth of 2 ft. Drainage Area 2000 A. (hilly).



STATE OF TENNESSEE
DEPARTMENT OF HIGHWAYS
NASHVILLE

LAYOUT OF BRIDGES
OVER
LOCKE AND RUSH CREEKS
SPANS 3 @ 20' & 2 @ 20' ON ROADWAY 20'
STATE HIGHWAY NO. 1
STA. 131+28.5 AND STA. 304+43
CANNON CO.
1920
SCALE 1/8" = 1'-0"

CORRECTED BY *L.M. Erickson*
BRIDGE ENGINEER
APPROVED BY *W.D. Moon*
CHIEF ENGINEER

DESIGNED BY _____ DATE _____
DRAWN BY *E. C. Carter* DATE *10-13-20*
TRACED BY *C. H. Hanson* DATE *10-15-20*
CHECKED BY *Alta Burrill* DATE *10-16-20*

D-1-125