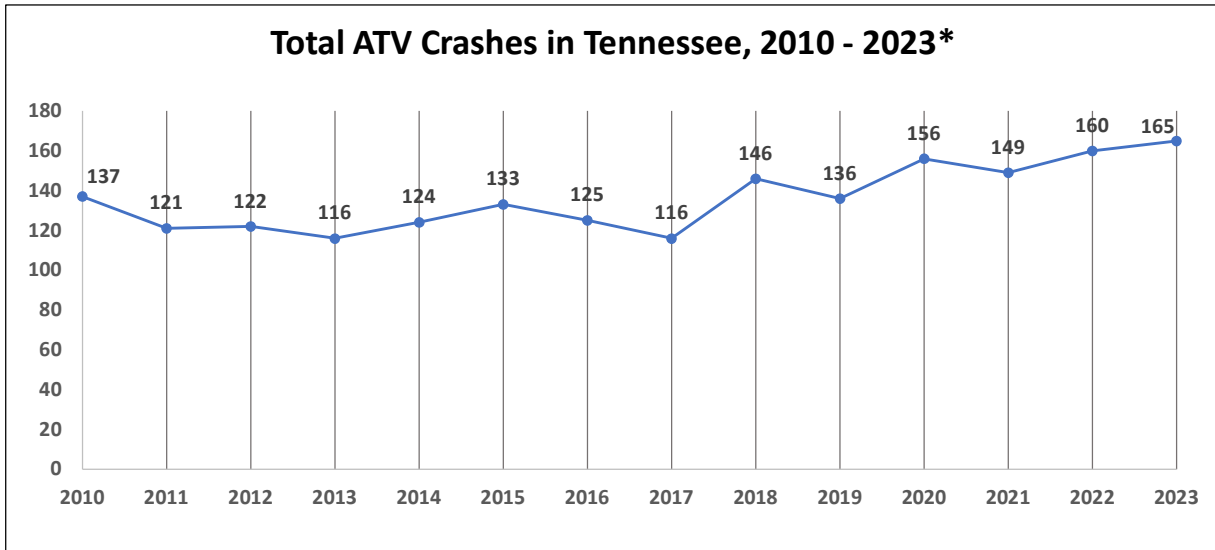


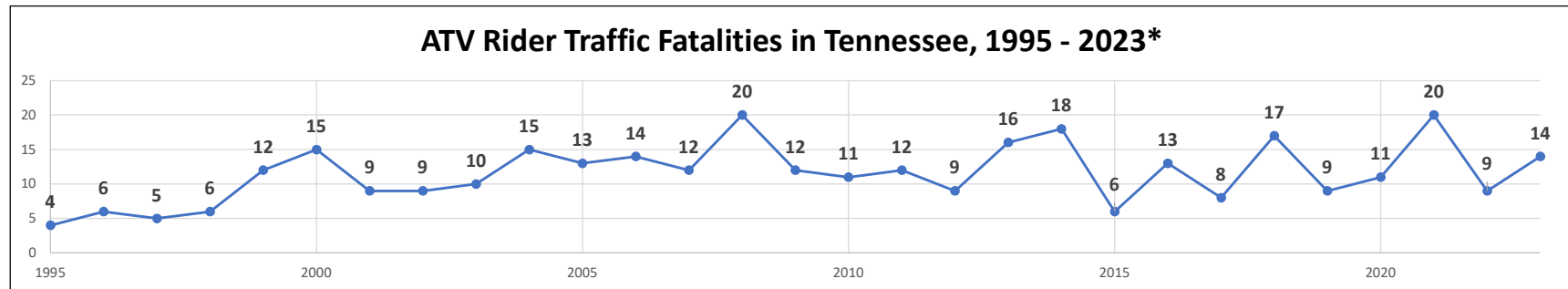
# Traffic Crashes in Tennessee Involving an ATV (All-Terrain Vehicle) 1995-2023\*

Year	Fatal Crashes Involving an ATV	ATV Rider Fatalities
2010	11	11
2011	15	15
2012	10	10
2013	17	17
2014	19	19
2015	6	6
2016	15	15
2017	10	10
2018	18	18
2019	14	14
2020	18	18
2021	25	26
2022	13	14
2023	23	23
TOTAL	1	1

\*Highlight = multiple fatality event.



Year	2010	2011	2012	2013	2014	2015	2016	2017	2018	2019	2020	2021	2022	2023
Fatal Crash	11	12	9	16	18	6	13	8	17	9	11	20	9	14
Injury Crash	110	84	96	87	81	95	78	83	94	88	110	86	111	115
Property Damage Over Threshold	16	25	17	13	25	32	34	25	35	39	35	43	40	36
TOTAL	137	121	122	116	124	133	125	116	146	136	156	149	160	165



NOTE: 2023\* - Fatality counts have not been finalized for CY 2022 or CY 2023. These counts are preliminary.

Source: TN Dept. of Safety and Homeland Security, TITAN on:

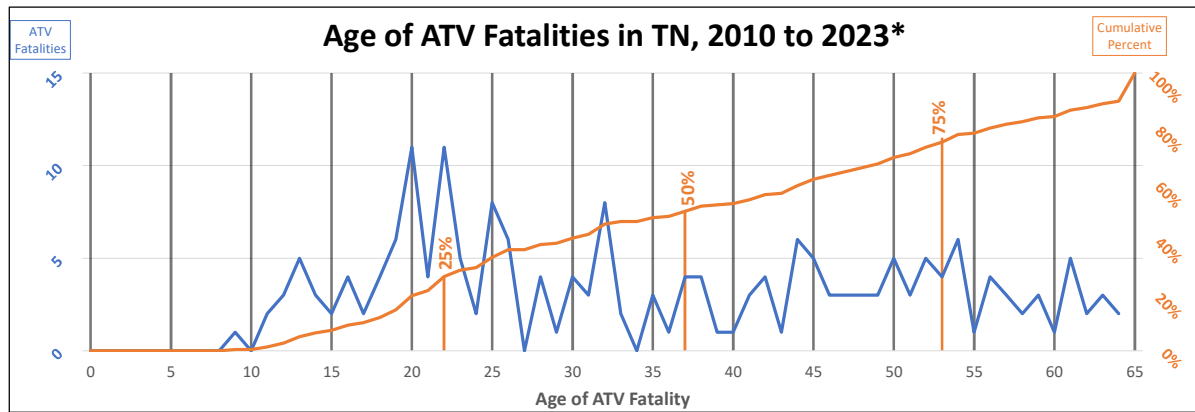
4/22/2024 .

Source: 1994-2012 Fatality Data, <http://www-fars.nhtsa.dot.gov/Main/index.aspx>; TITAN/TN-FARS YTD preliminary YTD on:

4/22/2024 .

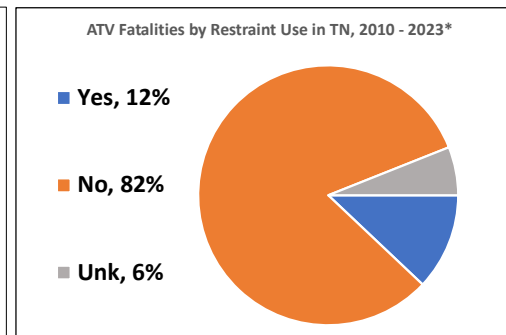
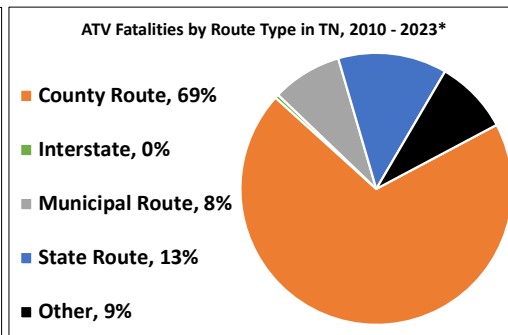
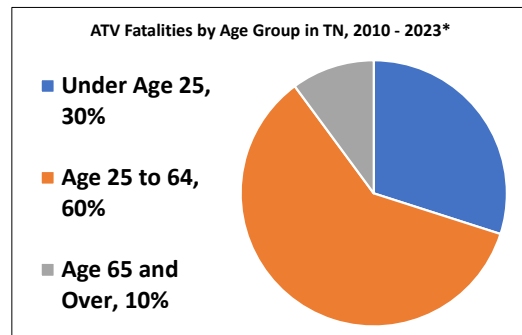
## Traffic Crashes in Tennessee Involving an ATV (All-Terrain Vehicle) 1995-2023\*

Age Group	ATV Fatalities	Percent
Under 10	1	0%
10 to 14	13	6%
15 to 19	18	8%
20 to 24	33	15%
25 to 29	19	9%
30 to 34	17	8%
35 to 39	13	6%
40 to 49	32	15%
50 to 59	36	17%
60 to 64	13	6%
65 and Over	22	10%
<b>TOTAL</b>	<b>217</b>	<b>100%</b>



Year	2010	2011	2012	2013	2014	2015	2016	2017	2018	2019	2020	2021	2022	2023
Yes - Helmet or Seat Belt	1	1	1	2	0	0	3	1	2	6	1	1	1	6
No - Helmet or Seat Belt	9	14	9	14	19	6	11	9	15	8	15	20	12	16
Unknown Restraint Use	1	0	0	1	0	0	1	0	1	0	2	5	1	1
<b>TOTAL</b>	<b>11</b>	<b>15</b>	<b>10</b>	<b>17</b>	<b>19</b>	<b>6</b>	<b>15</b>	<b>10</b>	<b>18</b>	<b>14</b>	<b>18</b>	<b>26</b>	<b>14</b>	<b>23</b>

Year	2010	2011	2012	2013	2014	2015	2016	2017	2018	2019	2020	2021	2022	2023
County Route	10	10	8	15	15	2	11	10	15	10	9	14	9	12
Interstate	0	0	0	0	0	1	0	0	0	0	0	0	0	0
Municipal Route	0	0	0	2	0	1	1	0	1	1	0	5	2	5
State Route	1	3	1	0	4	2	1	0	2	2	0	5	3	4
Other	0	2	1	0	0	0	2	0	0	1	9	2	0	2
<b>TOTAL</b>	<b>11</b>	<b>15</b>	<b>10</b>	<b>17</b>	<b>19</b>	<b>6</b>	<b>15</b>	<b>10</b>	<b>18</b>	<b>14</b>	<b>18</b>	<b>26</b>	<b>14</b>	<b>23</b>



NOTE: 2023\* - Fatality counts have not been finalized for CY 2022 or CY 2023. These counts are preliminary.  
 Source: TN Dept. of Safety and Homeland Security, TITAN on: 4/22/2024 .  
 Source: 1994-2012 Fatality Data, <http://www-fars.nhtsa.dot.gov/Main/index.aspx>; TITAN/TN-FARS YTD preliminary YTD on: