

Fair, Show, & Exhibition Rules for Equine

IDENTIFICATION

Horses and other equine 6 months of age and older must have a negative Equine Infectious Anemia test within the preceding 12 months.

VACCINATIONS

UT Extension recommends the following vaccines for equine traveling to fairs, shows, and exhibitions. Livestock owners are encouraged to consult with their veterinarian to determine the vaccine schedule and needs for individual animals.*

Equine

Eastern & Western Equine Encephalomyelitis
Rabies
Tetanus
West Nile Virus

Risk-Based

Equine Influenza
Potomac Horse Fever
Strangles

* Vaccines are not required but strongly recommended.

ANIMALS FROM OUT-OF-STATE

Horses from out of state must be accompanied by a Certificate of Veterinary Inspection issued within 30 days of movement and a negative Equine Infectious Anemia test within the preceding 12 months .

REMOVAL OF ANIMALS

Equine that are not in good health must be removed immediately from any fair, show, or exhibition.

Signs of disease in equine may include (but are not limited to):

- Fever
- Lethargy
- Coughing
- Sneezing
- Nasal and/or Ocular discharge
- Patchy Hair Loss
- Red/Inflamed Crusting Skin Lesions



PHOTO COURTESY OF UT EXTENSION

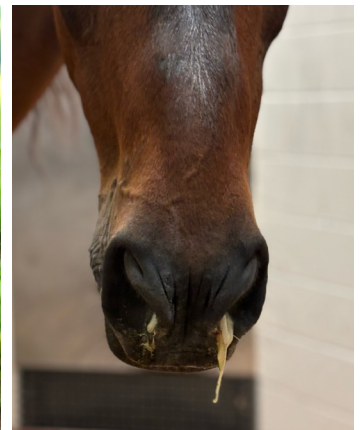


PHOTO COURTESY OF DR. MEGGAN GRAVES

Photos illustrate common symptoms but do not represent all diseases and should not be used for diagnosis.

Summary of Regulations and Health Requirements for Livestock at Tennessee Fairs, Shows, and Exhibitions

1. It is expected that all exhibitors bring only healthy animals to fairs, shows, and exhibitions. Although state and federal animal health officials will be performing as many inspections as possible, fair officials are responsible for ensuring that all animals are in overall good health and have appropriate required health and/or identification documentation for the species. Animals showing clinical signs of contagious disease must be sent home immediately. Violations must be reported to the state veterinarian or her agent.

2. A Certificate of Veterinary Inspection (CVI) is to accompany every livestock animal to a fair, show, or exhibition with the exception of equine and poultry from Tennessee. In-state Tennessee equine 6 months of age or older must have proof of a negative Equine Infectious Anemia test within the preceding 12 months. Poultry assembled at fairs, shows, or exhibitions must be accompanied by proof of a negative test for Pullorum-Typhoid within 90 days, or be tested on-site prior to exhibition following strict biosecurity procedures, or originate directly from a flock certified Pullorum-Typhoid Clean under the National Poultry Improvement Plan. As part of increased awareness and surveillance for avian influenza and other poultry diseases, the physical appearance of all birds should be assessed at the time testing is conducted.

3. A CVI issued in satisfaction of Tennessee animal health regulations is good for 90 days for Tennessee livestock only.

4. A CVI demonstrates that the animal showed no signs of contagious disease at the time of veterinary exam and CVI issuance. An animal developing signs of disease after inspection but during the period the CVI is valid is still subject to rules refusing entry of animals with contagious diseases to fairs, shows, and exhibitions.

5. Please note that exhibition requirements for out-of-state livestock are the same as regular import requirements. Learn more at www.tn.gov/agriculture.

6. Warts, ringworm, scabies, contagious ecthyma (soremouth), foot rot, cutaneous fungal and bacterial infections (i.e. club lamb disease, caseous lymphadenitis, pink eye/conjunctivitis) are considered contagious and infectious diseases and are NOT permissible.

7. All out-of-state poultry must originate directly from a Pullorum-Typhoid Clean Flock and a H5/H7 Avian Influenza Clean Flock, or be accompanied by evidence of a negative Pullorum-Typhoid test within 90 days and a negative official avian influenza test within 21 days.

Also, please note that if highly pathogenic avian influenza is detected in Tennessee or a neighboring state, commingling of poultry at fairs, shows, and exhibitions may be suspended.

Biosecurity for Fairs, Shows, and Exhibitions

The National Assembly of State Animal Health Officials and the National Association of State Public Health Veterinarians make the following recommendations for managers of fairs, shows, and exhibitions to protect attendees from disease:

- Provide easy access to hand washing stations.
- Post signs that advise:
 - No eating or drinking in the animal stabling or exhibition areas.
 - No pacifiers, sipping cups, or strollers in the animal stabling or exhibition areas.
 - Wash hands frequently.
- Discourage sleeping in the animal exhibition areas.
- If influenza-like illness is associated with the fair, show, or ex-

hibition, animal health and public health officials should be notified immediately.

- People who have influenza-like illness should leave the event immediately and seek medical care. They should advise their health care provider about their fair, show, or exhibition attendance.
- People at high risk for developing severe complications from influenza should limit their exposure to swine.

Also, be aware of the potential exposure of attendees to salmonella and E. coli from animals present on the grounds.

Please retain this material for reference during the remainder of the fair, show, and exhibition season.