



FY 2008 Statistical Abstract

Prepared: September 2008

By:

***Tennessee Department of Correction
Policy, Planning, and Research Division***

**The Tennessee Department of Correction
Fiscal Year 2007 – 2008 Statistical Abstract
Coordinated and Published by**

Policy, Planning, and Research Division

**Linda M. Nutt, Ph.D., Director
Cynthia J. Taylor
Vanessa L. Langston**

**To request a copy of this report, or other research information,
contact us at**

Telephone: 615-741-1000 ext. 8133

Email: research@mail.state.tn.us

Visit the TDOC website: www.state.tn.us.correction

Pursuant to the State of Tennessee's policy on nondiscrimination, the Department of Correction does not discriminate on the basis of race, gender, religion, color, national or ethnic origin, age, disability, or military service in its policies, or in the admission of or access to, or treatment or employment in, its programs, services, or activities.

Equal Employment Opportunity/Affirmative Action inquiries or complaints should be directed to the Department of Correction, EEO/AA Coordinator, Human Resources Office, 3rd Floor Rachel Jackson Building, 320 Sixth Avenue North, Nashville, TN 37243-0465, Telephone 615-741-1000 ext. 8026 or TDD (for persons with hearing impairments), 615-532-4423.

ADA inquiries or complaints should be directed to the Department of Correction, Human Resources Office, 3rd Floor Rachel Jackson Building, 320 Sixth Avenue North, Nashville, TN 37243-0465, Telephone 615-741-1000 ext. 1508 or TDD (for persons with hearing impairments), 615-532-4423.

TABLE OF CONTENTS

BUDGET & STAFFING	7
Personnel by Race and Sex	9
Personnel by Class	9
Correctional Officer Series Vacancy Rates	10
Correctional Officer Series	11
Authorized Full Time Equivalents (FTE'S)	11
Facility Staffing vs. Inmate Average Daily Population	12
Salary Comparisons	13
Correctional Officer Turnover Rate	14
Budget Recommendations by Function of Government	15
Expenditure Summary	16
Analysis of Program Service Costs	17
POPULATION, CAPACITY & TRENDS	19
State Incarceration Rates	21
Institutional Capacity & Population Distribution	22
Total Felon Population (Historical and Projected)	23
Unmet Bed Demand by Gender	23
Total Felon Population	24
Year-End Inmate Population Trends	24
Fiscal Year-End Incarcerated Felon Population	25
Felony Inmate Population by Age	26
Felony Inmate Population by Gender and Race	27
Felony Inmate Population by Gender, Race, and Location	27
Local Jail Census	28
Average Sentence Length by Primary Offense (Stock Population Detail)	29
Average Sentence Length by Primary Offense (Admissions)	30
Average Time Served by Primary Offense (Releases by Location)	31
Average Time Served by Primary Offense (Releases by Type)	32
Yearly Admissions and Releases	33
Felony Admissions by Type	33
Felony Releases by Type	33
Felony Admissions by Age, Race, and Gender	34
Felony Releases by Age, Race, and Gender	34
Admissions by Geographical Region	35
Admissions by County of Conviction	36
Felon Population by County of Conviction	37
OFFENDER ACCOUNTABILITY, PROGRAMS & SERVICES	39
Total Hours and Estimated Value of Community Service Work	41
Community Service Hours Worked by Facility	41
Inmate Assignments	42
Drug Screens - Positive Drug Tests by Percentage	43
Educational Enrollment	44
Education Test Results	44
GED & Vocational Certificates	44
Hospital Inpatient Cost Comparison	45
Number of Hospital Admissions	45
Pharmacy Costs	46
Mental Health Encounters for Female Offenders	46
INSTITUTIONS (DEMOGRAPHICS)	47
Facilities and Security Designations	49
Average Daily Population	50
Demographics by Facility	50
Facility Populations by Primary Offense	51
Incident Summary	52



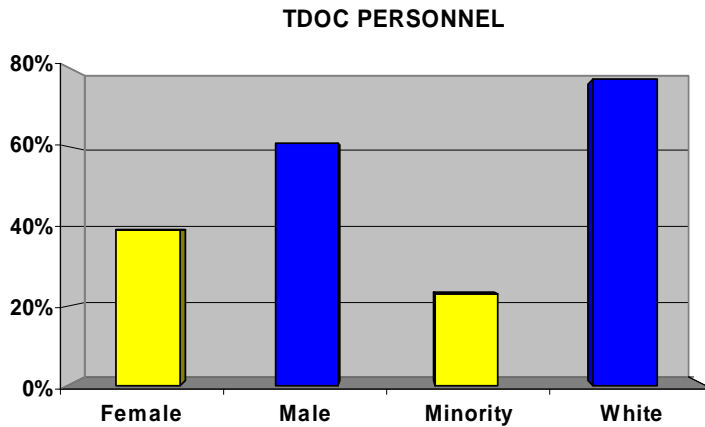
Budget & Staffing



The Central Office Human Resources section provides technical assistance and advice and ensures compliance with Civil Service Rules, EEOC/Affirmative Action, state law, and policies. This section also implements and monitors personnel-related programs such as employee relations, recruitment and retention, training, performance evaluations, employee transactions, and employee benefits, including accommodations under the Americans with Disabilities Act.

**Personnel by Race and Sex
June 30, 2008**

	Male	Female	Total
White	2,673	1,399	4,072
Minority	558	668	1,226
Total	3,231	2,067	5,298



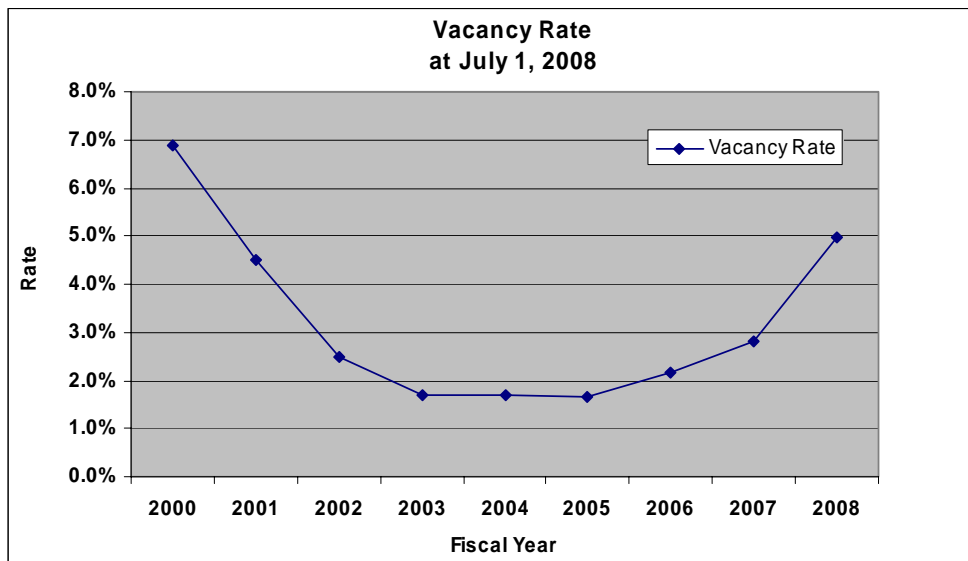
**Personnel by Class
June 30, 2008**

Personnel Type	FY07-08	FY06-07	FY05-06	FY04-05	FY03-04	FY02-03	FY01-02	FY00-01
Officials/ Administrators	2.3%	2.2%	2.0%	2.0%	1.8%	1.8%	1.8%	1.9%
Security	64.0%	64.3%	64.4%	64.9%	62.0%	60.1%	62.6%	60.5%
Maintenance	4.3%	4.3%	4.4%	4.3%	1.2%	0.6%	1.2%	1.0%
Professional	16.5%	16.3%	16.1%	15.8%	14.4%	15.2%	13.9%	14.3%
Skilled	2.1%	2.1%	2.1%	2.1%	3.5%	3.5%	3.4%	3.4%
Clerical	7.4%	7.4%	7.5%	7.8%	6.1%	6.1%	6.6%	6.6%
Technical	3.4%	3.4%	3.5%	3.0%	6.3%	6.7%	7.1%	7.1%
Para-Professional	0.0%	0.0%	n/a	0.1%	4.8%	5.9%	5.2%	5.2%

VACANCIES IN UNIFORMED STAFF

Correctional Officer Series Vacancy Rates from 2008

As of:	Vacant Positions	Total Positions	Vacancy Rate
7/1/2008	173	3,491	5.0%
7/1/2007	94	3,356	2.8%
7/1/2006	73	3,340	2.2%
7/1/2005	55	3,335	1.7%
7/1/2004	56	3,318	1.7%
7/1/2003	57	3,326	1.7%
7/1/2002	85	3,322	2.5%
7/1/2001	144	3,221	4.5%
7/1/2000	221	3,213	6.9%



Correctional officer vacancy rates declined steadily from a high of 6.9% in fiscal year (FY) 2000 to a nine year low of 1.7% in FY 2003. The rate remained steady throughout FY 2005, and began an upward trend in FY 2006 to its current rate of 5.0%. This is the highest rate in the past seven years.

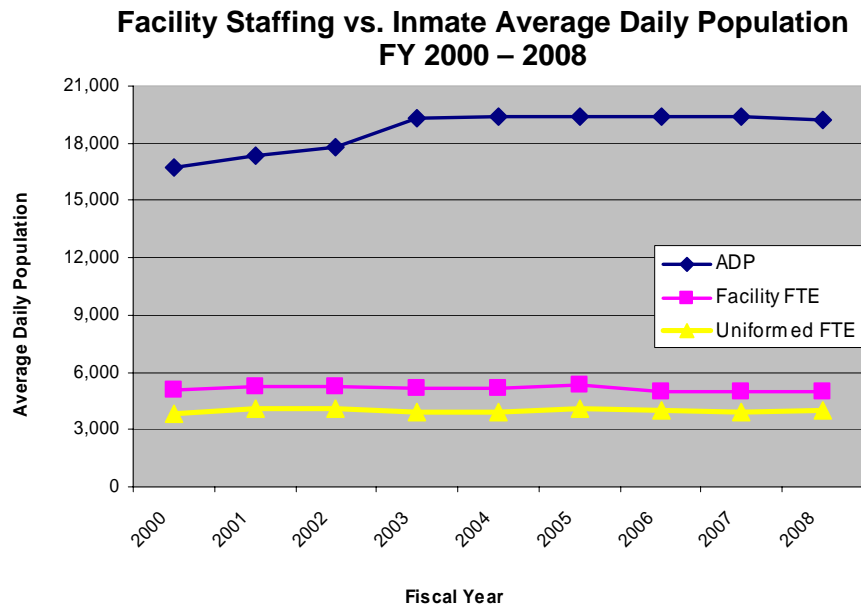
**Correctional Officer Series
June 30, 2008**

Positions	Correctional Officer	Correctional Clerical Officer	Corporal	Sergeant	Lieutenant	Captain	TOTAL
Total	2,568	147	448	186	80	62	3,491
Filled	2,471	131	404	181	74	57	3,318

AUTHORIZED FULLTIME EQUIVALENTS (FTE'S) in FY 2007 - 2008			
Facility	Uniformed	Non-Uniformed	Total
Brushy Mountain Correctional Complex (includes Morgan County Correctional Complex)	503	106	609
Charles Bass Correctional Complex	316	65	381
DeBerry Special Needs Facility	358	91	449
Mark Luttrell Correctional Complex	150	43	193
Northeast Correctional Complex	422	108	530
Northwest Correctional Complex	530	149	679
Riverbend Maximum Security Institution	271	53	324
Southeastern Tennessee State Regional Facility	255	66	321
Tennessee Correction Academy	27	49	76
Tennessee Prison for Women	183	59	242
Turney Center Industrial Prison & Farm	255	66	321
Wayne County Boot Camp	124	27	151
West Tennessee State Penitentiary	587	138	725
Facility Subtotal	3981	1020	5001
Central Office	0	209	209
Total	3981	1229	5210
% of Total	76%	24%	

- 96% of the total authorized positions for TDOC are in correctional facilities.
- 76% of the total system-wide FTE's are in uniformed security

STAFFING TRENDS



Correctional facility staffing trends are presented in the graph above, which include data on total facility staffing (expressed in FTE's or full time equivalents) and uniformed security staffing levels as compared to the average daily inmate population.

Between FY 2000 and FY 2008:

- Inmate average daily population increased by 21%
- Total facility staffing increased by 1.2%
- Total uniformed security staffing increased by 5.8%

SALARY COMPARISONS

The ability to recruit and retain qualified staff continues to be a concern for the Department. Because salary levels are critical in recruitment and retention of staff, the Department closely monitors other correctional and law enforcement agencies to compare its salaries with those offered by agencies performing similar functions.

State DOC	Average Starting Salary
Arkansas	\$29,024
Alabama	\$27,552
North Carolina	\$26,209
Missouri	\$26,004
Virginia	\$25,225
Tennessee	\$24,456
Georgia	\$23,614
Kentucky	\$23,346
Mississippi	\$22,006

When compared to other neighboring state correctional departments, TDOC ranks 6th in the average starting salary for correctional officers.

Source: Southern Legislative Conference, July 2007.

Shelby County Sheriff's Office	\$30,859
Hamilton County Sheriff's Office	\$30,544
Davidson County Sheriff's Office	\$30,349
Knox County Sheriff's Office	\$27,973
Federal Bureau of Prisons (2005)	\$26,747

TDOC also ranks low when compared to other correction and law enforcement agencies located near some of our facilities. These are some of the agencies with whom we compete directly in the recruitment and retention of uniformed staff.

CORRECTIONAL OFFICER TURNOVER

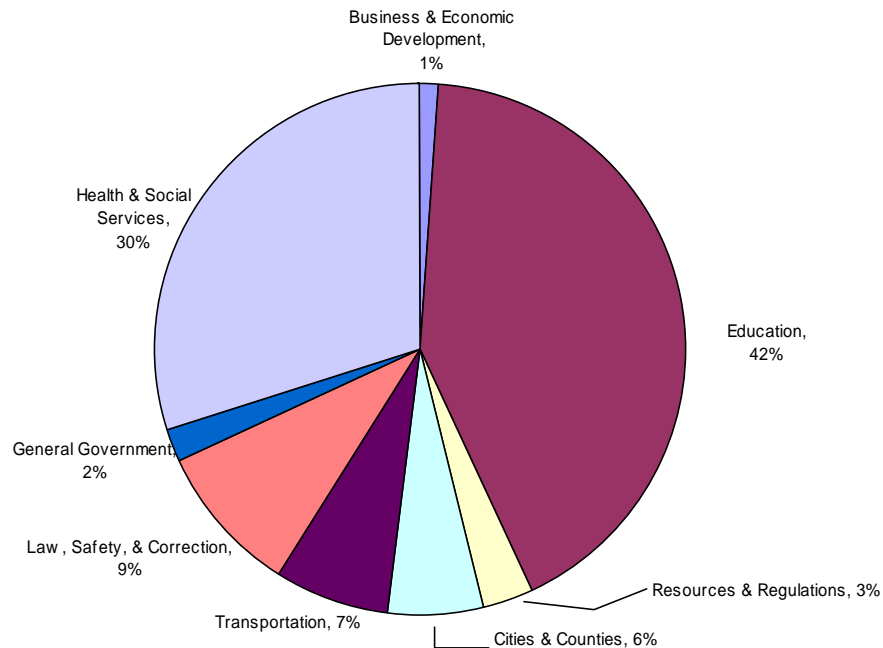
TDOC Correctional Officer Turnover Rates: FY 2007-2008

Institution		Correctional Officer Turnover Rate
Brushy Mountain Correctional Complex	BMCX	13.2%
Charles Bass Correctional Complex	CBCX	47.7%
DeBerry Special Needs Facility	DSNF	28.5%
Mark Luttrell Correctional Facility	MLCC	33.7%
Morgan County Correctional Complex	MCCX	7.5%
Northeast Correctional Complex	NECX	18.4%
Northwest Correctional Complex	NWCX	24.9%
Riverbend Maximum Security Institution	RMSI	55.4%
Southeastern TN State Regional Facility	STSRCF	19.2%
Tennessee Prison for Women	TPFW	45.2%
Turney Center Industrial Prison	TCIP	31.1%
Wayne County Boot Camp	WCBC	11.9%
West Tennessee State Penitentiary	WTSP	33.4%
System-wide		28.3%

In fiscal year 2007-2008, the correctional officer turnover rate was 28.3% system-wide. This represents a .8% increase from the prior fiscal year rate of 27.5%. The turnover rate includes all correctional officers leaving positions, except those occurring when an employee is transferred or promoted within the TDOC system and in the correctional officer series.

TDOC IN THE CONTEXT OF THE STATE BUDGET

FY 2007 – 2008 Total Budget Recommendations
By Function of Government



The Governor's Budget included \$27.5 billion in recommended funding allocated by "functional area."

- The Department's total operating budget for FY08 was \$688,516,600.
- Improvements in this operating budget totaled \$29,273,000
 - \$6,891,900 for capacity increases brought on by the increasing local jail population
 - \$10,019,000 for the Morgan County prison expansion project
 - \$8,448,800 for increased incarceration costs due to new legislation
 - \$3,913,300 for contract increases related to the private facilities, health, and mental health services
- Actual expenditures were \$623,064,200 based on the STARS fourth preliminary closing report for FY08.

EXPENDITURE SUMMARY

Tennessee Department of Correction Expenditure Summary
Fiscal Year 2007 – 2008
From 4th Preliminary dated September 09, 2008

Expenditures by Object	Administration	Major Maintenance and Construction	Adult Institutions	Sex Offender	State Prosecution	Total
Regular Salaries	12,698,471	1,081,182	147,829,588	-	-	161,609,241
Longevity	393,100	18,300	4,821,625	-	-	5,233,025
Overtime	102,708	25,280	7,525,834	-	-	7,653,821
Benefits	5,150,821	442,807	75,068,698	-	-	80,662,326
Total Personal Services & Benefits	18,345,100	1,567,568	235,245,744	-	-	255,158,412
Travel	584,883	150	2,944,012	45,908	-	3,574,953
Printing, Duplicating & Binding	121,231	-	573,259	1,809	-	696,299
Utilities and Fuel	500,648	-	17,488,112	-	-	17,988,760
Communications	122,184	2,747	361,941	-	13	486,884
Maintenance Repairs & Services	157,574	595,104	1,765,151	-	-	2,517,829
Professional Services & Dues	2,076,180	80,578	76,123,142	178,874	11,482,250	89,941,023
Supplies & Materials	2,068,992	2,074,634	34,999,822	-	-	39,143,448
Rentals & Insurance	1,557,106	25,332	5,206,782	-	-	6,789,220
Motor Vehicle Operations	12,605	2,820	769,245	-	-	784,669
Awards & Indemnities	24,509	-	5,132,873	-	-	5,157,382
Grants & Subsidies	205,218	25	59,725,072	-	119,551,254	179,481,568
Unclassified	3,200	783	2,000	-	-	5,983
Stores for Resale/Reissue/Manufacture	233	-	6,617,078	-	-	6,617,311
Equipment	8,047	702,874	608,539	-	-	1,319,461
Land	-	-	-	-	-	-
Buildings	-	-	-	-	-	-
Discounts Lost	-	-	365	-	-	365
Highway Construction	-	37,434	-	-	-	37,434
Professional Services Provided By Other State Agencies	971,187	475,815	11,063,209	-	598,727	13,108,938
Debt Retirement	-	-	-	-	254,226	254,226
Debt Interest	-	-	-	-	-	-
Total Other Expenditures	8,413,795	3,998,297	223,380,601	226,591	131,886,471	367,905,754
GRAND TOTAL	26,758,895	5,565,865	458,626,345	226,591	131,886,471	623,064,166
Funding Sources						
State Appropriation	22,301,263	5,528,109	448,295,873	146,208	130,920,268	607,191,721
Federal	605,069	-	-	-	-	605,069
Counties	132,895	-	-	-	-	132,895
Cities	-	-	-	-	-	-
Non-Governmental	-	-	-	-	-	-
Current Services	3,318,612	-	8,680,026	61,563	966,203	13,026,405
Departmental Interest	549	-	-	-	-	549
Inter-Departmental	400,506	37,755	1,650,446	18,820	-	2,107,527
Reserves	-	-	-	-	-	-
	-	-	-	-	-	-
Personnel						
Full Time	290	25	5,287	-	-	5,602
Part Time	-	-	-	-	-	-
Seasonal	-	-	-	-	-	-
Total	290	25	5,287	-	-	5,602



Population, Capacity, & Trends



**INCARCERATION RATES: TENNESSEE VS. OTHER STATES
(Number incarcerated per 100,000)**

State Incarceration Rates: June 30, 2007

Rank		Rank		Rank	
1	Louisiana	857	18	California	478
2	Mississippi	723	19	Colorado	466
3	Texas	682	20	Alaska	451
4	Oklahoma	670	21	Ohio	440
5	Alabama	611	22	South Dakota	432
6	Georgia	558	23	Tennessee	430
7	Arizona	546	24	Indiana	422
8	South Carolina	526	25	Wyoming	404
9	Florida	521	26	Maryland	399
10	Missouri	509	27	Wisconsin	399
11	Nevada	508	28	Connecticut	399
12	Michigan	503	29	Oregon	373
13	Kentucky	499	30	Pennsylvania	363
14	Idaho	491	31	North Carolina	362
15	Virginia	490	32	Montana	359
16	Arkansas	489	33	Hawaii	338
17	Delaware	486	34	New York	327
				All States	451

Source: *Prison Inmates at Midyear 2007, Bureau of Justice Statistics.*

Note: *The following jurisdictions have integrated prison & jail systems: Delaware, Vermont, Connecticut, Alaska, Hawaii, and Rhode Island.*

**Illinois did not provide data.*

The most recent statistics released June 2008, indicate that Tennessee has the 23rd highest incarceration rate in the country. The incarceration rate in Tennessee declined from 433 in June 2006 to 430 in June 2007.

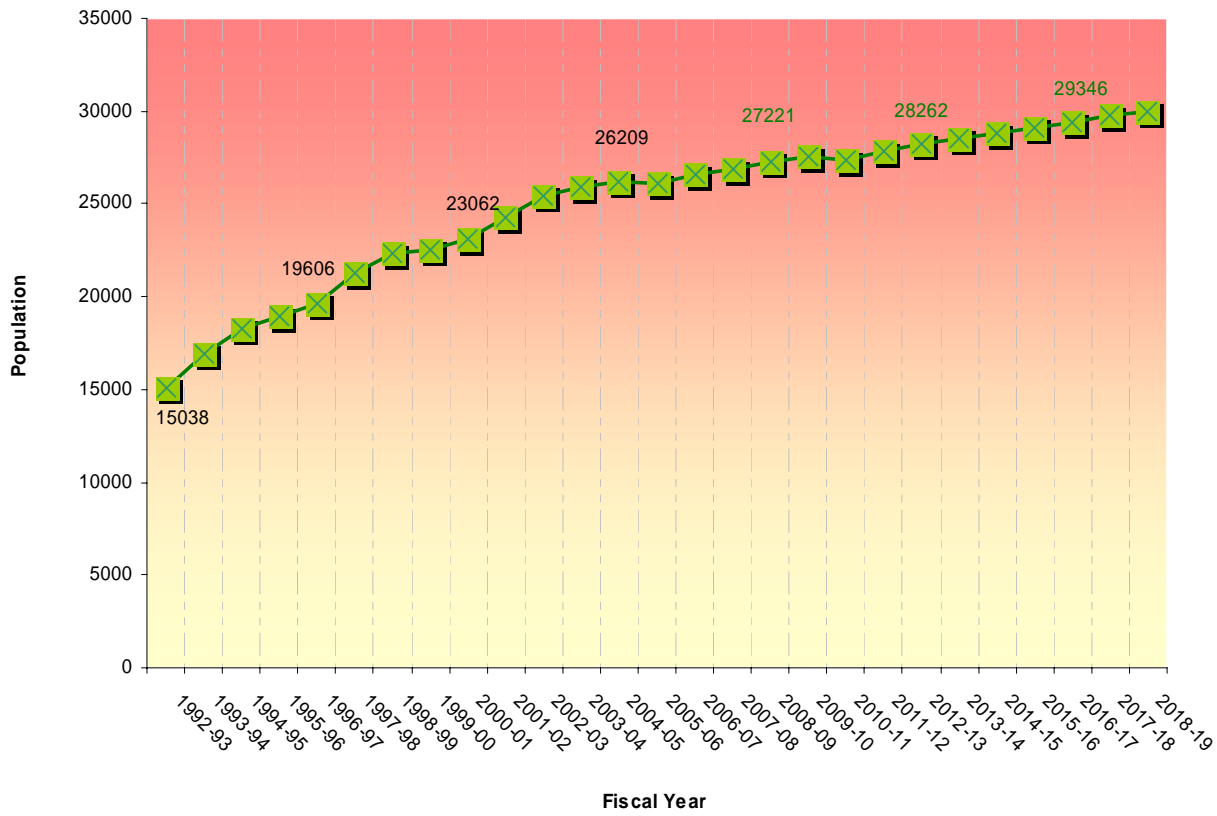
TDOC INSTITUTIONAL CAPACITY & POPULATION DISTRIBUTION

INSTITUTION	Total Beds Available	TDOC Operating Capacity	Assigned Count as of 6/30/2008	Population as a Percent of	
				Available Beds	Operating Capacity
GENERAL PURPOSE FACILITIES					
Hardeman County Correctional Center (HCCF)	2,016	1,976	1,985	98.5%	100.5%
Morgan County Correctional Complex (MCCX)	1,013	1,003	977	96.4%	97.4%
Northeast Correctional Complex (NECX)	1,856	1,819	1,826	98.4%	100.4%
Northwest Correctional Complex (NWCX)	2,425	2,377	2,325	95.9%	97.8%
South Central Correctional Facility (SCCF)	1,676	1,642	1,644	98.1%	100.1%
Southeastern TN State Regional Corr. Facility (STSRC)	981	971	942	96.0%	97.0%
Turney Center Industrial Prison and Farm (TCIP)	1,272	1,247	1,251	98.3%	100.3%
Whiteville Correctional Facility (WCFA)	1,536	1,505	1,520	99.0%	101.0%
SUB-TOTAL	12,775	12,540	12,470	97.6%	99.4%
CLASSIFICATION FACILITIES					
Brushy Mountain Correctional Complex (BMCX)	590	584	497	84.2%	85.1%
Charles Bass Correctional Complex (CBCX)	1,110	1,099	1,063	95.8%	96.7%
Tennessee Prison for Women (TPW)	775	744	748	96.5%	100.5%
SUB-TOTAL	2,475	2,427	2,308	93.3%	95.1%
SPECIAL PURPOSE FACILITIES					
DeBerry Special Needs Facility (DSNF)	800	736	745	93.1%	101.2%
Mark Luttrell Correctional Center (MLCC)	440	436	406	92.3%	93.1%
Wayne County Boot Camp (WCBC)	450	446	365	81.1%	81.8%
SUB-TOTAL	1,690	1,618	1,516	89.7%	93.7%
HIGH SECURITY FACILITIES					
Riverbend Maximum Security Institution (RMSI)	736	714	702	95.4%	98.3%
West Tennessee State Penitentiary (WTSP)	2,582	2,505	2,501	96.9%	99.8%
SUB-TOTAL	3,318	3,219	3,203	96.5%	99.5%

OPERATING CAPACITY VS. INMATE POPULATION PROJECTIONS

Fiscal Year End June 30th	Operating Capacity	Projected Population	Unmet Bed Demand
2008	25,349	26,849	1,500
2009	25,906	27,221	1,315
2010	26,086	27,519	1,433
2011	26,238	27,388	1,150
2012	27,549	27,825	276
2013	27,668	28,262	594
2014	27,668	28,494	826
2015	27,668	28,793	1,125
2016	27,668	29,117	1,449
2017	27,668	29,346	1,678
2018	27,668	29,768	2,100
2019	27,668	29,983	2,315

Total Felon Population (Historical and Projected), 1993- 2019



UNMET BED DEMAND BY GENDER

Fiscal Year End	Operating Capacity		Projected Population		Unmet Bed Demand		
	June 30th	Males	Females	Males	Females	Male	Females
2008		23,543	1,806	24,786	2,063	1,243	257
2009		24,100	1,806	25,075	2,146	975	340
2010		24,280	1,806	25,320	2,199	1,040	393
2011		24,425	1,813	25,169	2,219	744	406
2012		25,736	1,813	25,607	2,218	-129	405
2013		25,855	1,813	25,969	2,293	114	480
2014		25,855	1,813	26,215	2,279	360	466
2015		25,855	1,813	26,523	2,270	668	457
2016		25,855	1,813	26,801	2,316	946	503
2017		25,855	1,813	26,973	2,373	1,118	560
2018		25,855	1,813	27,383	2,385	1,528	572
2019		25,855	1,813	27,541	2,442	1,686	629

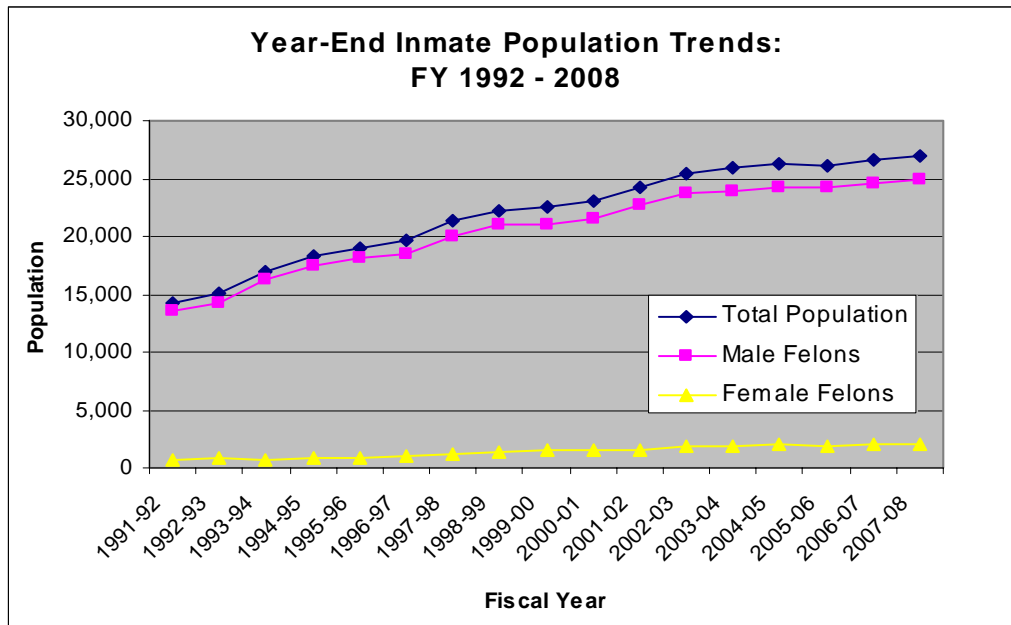
FELON POPULATION TRENDS

The felon population data included in this annual report is from the Tennessee Offender Management Information System (TOMIS) unless otherwise stated. Data from other sources may vary slightly from TOMIS due to the time delay in the TOMIS data entry process. In some cases information is not received until several months after sentencing, admissions, release, etc. The data on this page and the next are from TDOC monthly population reports.

Total Felon Population: June 30, 2008

County/Local Jails	
Locally Sentenced	5,297
TDOC Backup	2,204
TDOC Prisons	
19,497	
Community Supervision	
Parole	10,617
Probation	47,850
Community Corrections	6,827
TOTAL	
92,292	

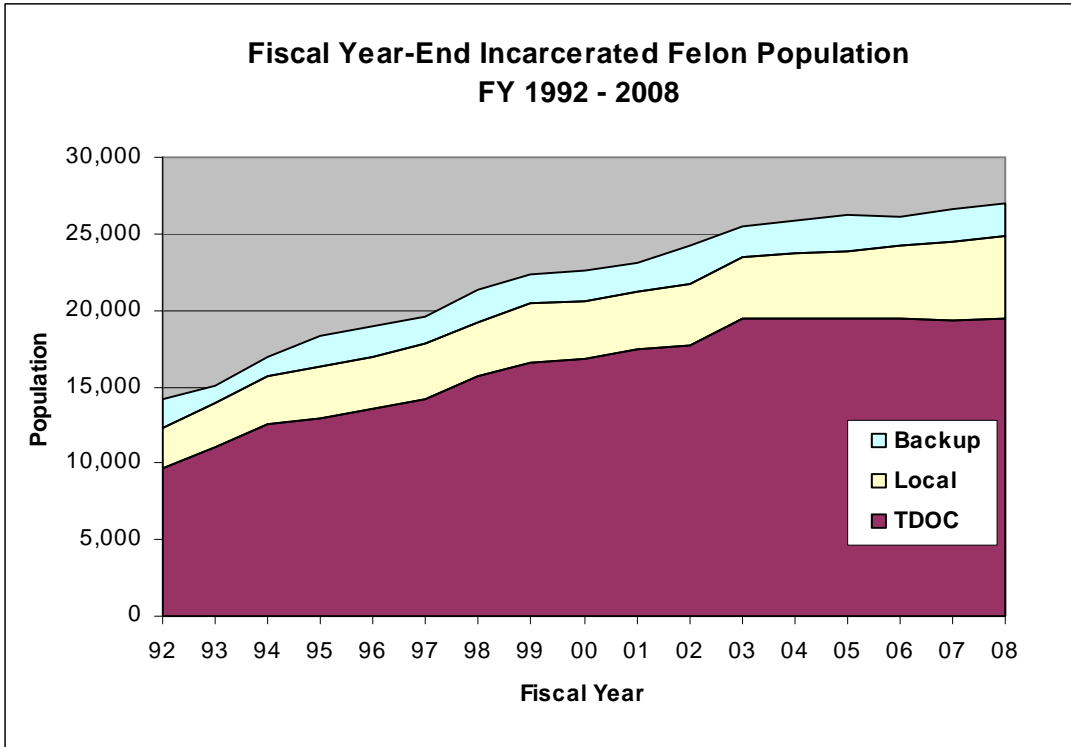
Fiscal Year-End Inmate Population Trends



Over the past 17 fiscal years (1992-2008), the incarcerated felon population (including TDOC backup and locally sentenced felons) has increased 89.7% (from 14,234 to 26,998). The male and female felon population increased 83.5% and 215.8% respectively during this same period.

During the past fiscal year, the total incarcerated felon population increased from 26,573 in July 2007 to 26,998 in June 2008, an increase of 1.6%. The male felon population increased 1.3% and the female felon population increased 6.0% during FY 2008.

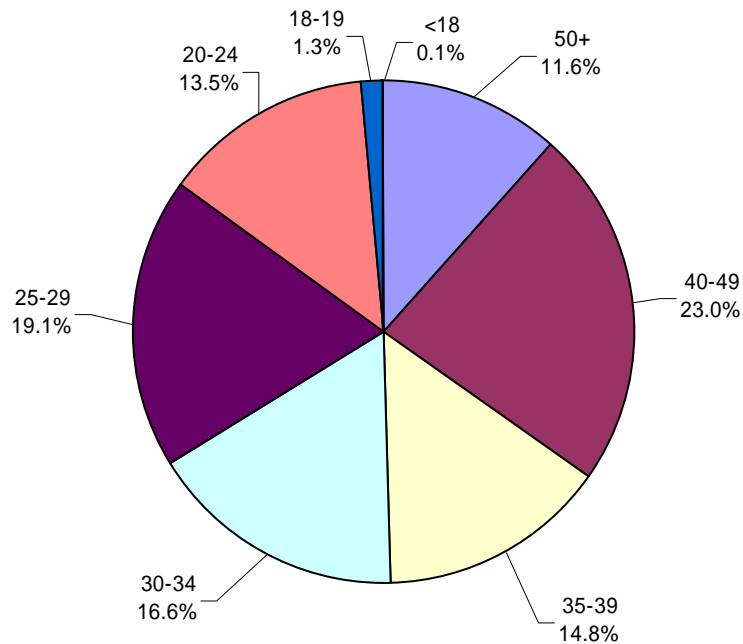
Annual Fiscal Year-End Incarcerated Felon Population: FY 1992-2008



The TDOC in-house population has increased 102.0% over the past 17 years (from 9,651 to 19,497). TDOC backup was 12.6% higher in June 2008 than in June 1992 (from 1,957 to 2,204); locally sentenced felons have increased 101.7% during this same period (from 2,626 to 5,297).

FELONY INMATE DEMOGRAPHICS: AGE, GENDER, RACE

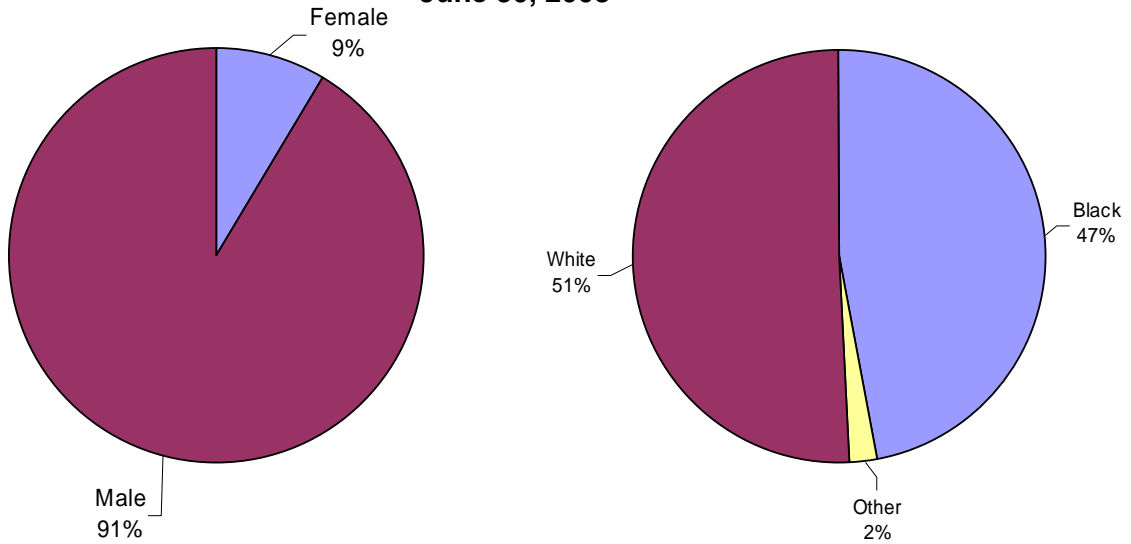
**Felony Inmate Population by Age
(System-Wide)
June 30, 2008**



Felony Inmate Population by Age: June 30, 2008

	TDOC INHOUSE	%	TDOC BACKUP	%	LOCAL FELON	%	SYSTEM- WIDE	%
50+	2,655	13.7%	260	6.0%	246	6.9%	3,161	11.6%
40-49	4,665	24.1%	913	21.1%	700	19.7%	6,278	23.0%
35-39	2,964	15.3%	600	13.9%	464	13.1%	4,028	14.8%
30-34	3,257	16.8%	721	16.7%	539	15.2%	4,517	16.6%
25-29	3,538	18.3%	925	21.4%	733	20.6%	5,196	19.1%
20-24	2,116	10.9%	805	18.6%	758	21.3%	3,679	13.5%
18-19	156	0.8%	93	2.2%	102	2.9%	351	1.3%
<18	15	0.1%	4	0.1%	10	0.3%	29	0.1%
TOTAL	19,366	100%	4,321	100%	3,552	100%	27,239	100%

**Felony Inmate Population by Gender and Race
(System-Wide)
June 30, 2008**



**Female Inmate Population by Gender Race, and Location
June 30, 2008**

	TDOC	%	Backup	%	Local	%	System-Wide
Male							
Black	8,310	45.6%	1,613	45.6%	2,151	68.9%	12,074
White	9,469	52.0%	1,857	52.5%	906	29.0%	12,232
Other	437	2.4%	65	1.8%	65	2.1%	567
Total Male	18,216	100.0%	3,535	100.0%	3,122	100.0%	24,873
Female							
Black	322	28.0%	165	21.0%	208	48.4%	695
White	805	70.0%	616	78.4%	219	50.9%	1640
Other	23	2.0%	5	0.6%	3	0.7%	31
Total Female	1,150	100.0%	786	100.0%	430	100.0%	2,366
TOTAL	19,366		4,321		3,552		27,239

LOCAL JAIL CENSUS

Local Jail Census: FY 2007 - 2008

	JULY	AUG	SEPT	OCT	NOV	DEC	JAN	FEB	MAR	APR	MAY	JUNE
Total Jail Population	25,594	19,038	26,419	25,545	25,319	23,590	24,331	24,409	24,945	25,573	26,044	26,186
TDOC Backup	1,974	1,967	2,073	2,072	2,069	1,910	1,903	1,922	1,969	2,007	2,235	2,204
Local Felons	5,245	5,336	5,308	5,287	5,403	5,109	5,396	5,453	5,382	5,487	5,460	5,297
Other Convicted Felons	797	930	872	799	698	691	628	665	695	684	693	585
Convicted	5,310	5,635	5,723	5,230	5,493	4,418	5,073	5,408	5,155	5,262	5,485	5,259
Others	834	897	878	939	978	1008	1013	979	1072	1,022	1005	1084
Pre-trial Detainees												
Felony	7,863	815	8,058	7,866	7,579	7,324	7,361	7,138	7,609	7,809	7,898	7,968
Misdemeanant	3,571	3,458	3,507	3,352	3,099	3,130	2,957	2,844	3,063	3,302	3,268	3,789
Percentage of Jail Population												
TDOC Backup	7.7%	10.3%	7.8%	8.1%	8.2%	8.1%	7.8%	7.9%	7.9%	7.8%	8.6%	8.4%
Local Felons	20.5%	28.0%	20.1%	20.7%	21.3%	21.7%	22.2%	22.3%	21.6%	21.5%	21.0%	20.2%
Other Convicted Felons	3.1%	4.9%	3.3%	3.1%	2.8%	2.9%	2.6%	2.7%	2.8%	2.7%	2.7%	2.2%
Convicted	20.7%	29.6%	21.7%	20.5%	21.7%	18.7%	20.8%	22.2%	20.7%	20.6%	21.1%	20.1%
Others	3.3%	4.7%	3.3%	3.7%	3.9%	4.3%	4.2%	4.0%	4.3%	4.0%	3.9%	4.1%
Pre-trial Detainees												
Felony	30.7%	4.3%	30.5%	30.8%	29.9%	31.0%	30.3%	29.2%	30.5%	30.5%	30.3%	30.4%
Misdemeanant	14.0%	18.2%	13.3%	13.1%	12.2%	13.3%	12.2%	11.7%	12.3%	12.9%	12.5%	14.5%

Source: TDOC Jail Summary Report

Average Sentence Length by Primary Offense
Stock Population Detail

Felony Inmate Population:
Average Total Sentence Length by Primary Offense: FY 2007 - 2008

PERSON	TDOC INHOUSE		TDOC BACKUP		LOCALLY SENTENCED		SYSTEM-WIDE					
	NUMBER OF OFFENDERS	% OF TDOC INHOUSE	NUMBER OF OFFENDERS	% OF TDOC BACKUP	NUMBER OF OFFENDERS	% OF LOCALLY SENTENCED	NUMBER OF OFFENDERS	% OF SYSTEM-WIDE				
PRIMARY OFFENSE GROUP	AVERAGE SENTENCE (YY/MM)	AVERAGE SENTENCE (YY/MM)	AVERAGE SENTENCE (YY/MM)	AVERAGE SENTENCE (YY/MM)	AVERAGE SENTENCE (YY/MM)	AVERAGE SENTENCE (YY/MM)	AVERAGE SENTENCE (YY/MM)	AVERAGE SENTENCE (YY/MM)				
PERSON	Homicide	3,658	18.89%	46	1.06%	15/03	31	0.87%	05/05	3,735	13.71%	29/05
	Murder	11	0.06%	6	0.14%	05/08	9	0.25%	04/01	26	0.10%	06/01
	Negligent Manslaughter	248	1.28%	20	0.46%	10/08	14	0.39%	05/03	282	1.04%	20/04
	Kidnapping	2,708	13.98%	122	2.82%	08/09	63	1.77%	04/09	2,893	10.62%	22/08
	Sex Offenses	82	0.42%	45	1.04%	02/09	16	0.45%	02/06	143	0.52%	06/02
	Forcible	2,160	11.15%	358	8.29%	06/01	398	11.20%	04/02	2,916	10.71%	12/11
	Non-Forcible	47	0.24%	41	0.95%	02/07	19	0.53%	02/02	107	0.39%	03/09
	Assault	118	0.61%	20	0.46%	04/10	16	0.45%	04/06	154	0.57%	12/05
	Aggravated Assault	1,830	9.45%	631	14.60%	05/02	593	16.69%	03/10	3,054	11.21%	07/07
	Simple Assault	329	1.70%	245	5.67%	03/08	136	3.83%	02/07	710	2.61%	05/00
PROPERTY	Atton	864	4.46%	424	9.81%	03/11	379	10.67%	03/04	1,667	6.12%	05/08
	Burglary	2,332	12.04%	551	12.75%	09/10	73	2.06%	06/10	2,956	10.85%	17/03
	Forgery/Fraud	537	2.77%	114	2.64%	06/07	151	4.25%	04/09	802	2.94%	07/09
	Larceny/Theft	2,166	11.18%	573	13.26%	07/09	534	15.03%	05/01	3,273	12.02%	10/01
	Robbery	993	5.13%	529	12.24%	05/00	310	8.73%	03/09	1,632	6.73%	07/05
SOCIAL	Aggravated Robbery	188	0.97%	29	0.67%	08/02	3	0.08%	03/04	220	0.81%	14/00
	All Other Robbery	78	0.40%	64	1.48%	03/02	35	0.99%	02/02	177	0.65%	03/07
	Drug Offenses	232	1.20%	17	0.39%	08/03	8	0.23%	04/03	257	0.94%	19/09
	Cocaine	77	0.40%	34	0.79%	04/03	44	1.24%	04/02	155	0.57%	06/10
	Other Drug Offenses	118	0.61%	55	1.27%	04/00	63	1.77%	03/09	236	0.87%	09/03
OTHER	Vehicle	16	0.08%	6	0.14%	07/08	1	0.03%	03/00	23	0.08%	07/05
	Vehicle Homicide/DUI	565	2.92%	391	9.05%	05/11	262	7.38%	02/11	1,218	4.47%	04/05
	All Other Vehicular	9	0.05%	0	0.00%	00/00	394	11.09%	00/00	403	1.48%	00/00
	C/S/F Person	19,366	100%	4,321	100%	06/00	3,552	100%	03/07	27,239	100%	12/09
	C/S/F Property	90	1.59%	0	0.00%	00/00	0	0.00%	00/00	90	1.24%	00/00
Sentence Type	Death	2,038	36.05%	9	1.03%	00/00	0	0.00%	00/00	2,047	28.29%	00/00
	Life	3,281	58.03%	80	9.17%	12/01	4	0.56%	06/04	3,365	46.50%	12/07
	85+	245	4.33%	783	89.79%	01/09	706	99.44%	01/09	1,734	23.96%	01/09
	1-2 Years	90	1.59%	0	0.00%	00/00	0	0.00%	00/00	90	1.24%	00/00
	Life	2,038	36.05%	9	1.03%	00/00	0	0.00%	00/00	2,047	28.29%	00/00

2,137 offenders with sentences of death (90), life (1,783), and life without parole (264) are included in the TDOC counts, but are not included in the calculation of average sentence lengths.

Average Sentence Lengths by Primary Offense Admissions

Average Sentence Length by Primary Offense Group: FY 2007-2008
Felony Admissions

PRIMARY OFFENSE GROUP	TDOC SENTENCED			LOCALLY SENTENCED			SYSTEM-WIDE		
	Number of Offenders	% Of TDOC Total	Average Sentence (YY/MM)	Number of Offenders	% Of Local Total	Average Sentence (YY/MM)	System-wide Total	% Of System Total	Average Sentence (YY/MM)
PERSON	Homicide								
	Murder	256	2.31%	18	0.47%	05/07	274	1.81%	21/06
	Negligent Manslaughter	17	0.15%	13	0.34%	02/07	30	0.20%	03/09
	Kidnapping	51	0.46%	10	0.26%	03/10	61	0.40%	11/00
	Sex Offenses								
	Forcible	333	3.01%	60	1.57%	03/04	393	2.59%	11/00
	Non-Forcible	109	0.98%	26	0.68%	02/00	135	0.89%	03/01
	Assault								
	Aggravated Assault	984	8.89%	413	10.77%	03/07	1,397	9.22%	06/06
	Simple Assault	119	1.08%	76	1.98%	01/07	195	1.29%	02/03
PROPERTY	Arson	60	0.54%	18	0.47%	03/10	78	0.51%	05/10
	Burglary	1,644	14.85%	693	18.08%	03/00	2,337	15.42%	05/00
	Forgery/Fraud	640	5.78%	213	5.56%	02/01	853	5.63%	03/04
	Larceny/Theft	1,194	10.79%	555	14.48%	02/07	1,749	11.54%	03/09
	Robbery								
	Aggravated Robbery	776	7.01%	46	1.20%	06/05	822	5.42%	12/08
	All Other Robbery	364	3.29%	143	3.73%	04/08	507	3.34%	06/02
	Drug Offenses								
	Cocaine	1,702	15.38%	464	12.11%	04/08	2,166	14.29%	07/11
	Other Drug Offenses	1,260	11.38%	438	11.43%	02/10	1,698	11.20%	05/00
SOCIAL	Vehicular	62	0.56%	2	0.05%	02/00	64	0.42%	10/03
	Vehicular Homicide/DUI	157	1.42%	61	1.59%	02/00	218	1.44%	02/05
	All Other Vehicular								
	C/SIF Person*	72	0.65%	11	0.29%	02/08	83	0.55%	11/10
OTHER	C/SIF Property*	77	0.70%	65	1.70%	03/00	142	0.94%	04/06
	C/SIF Societal/Drugs*	146	1.32%	112	2.92%	02/07	258	1.70%	05/00
	Escape	21	0.19%	6	0.16%	02/03	27	0.18%	04/05
	All Other	1025	9.26%	390	10.17%	02/02	1,415	9.33%	03/00
	Unknown*	0	0.00%	0	0.00%	00/00	257	1.70%	00/00
	TOTAL	11,069	100%	3,833	100%	03/01	15,159	100%	06/00
Sentence Type	Death	0	0.00%	0	0.00%	N/A	0	0.00%	N/A
	Life	87	0.79%	0	0.00%	N/A	87	0.57%	00/00
	85%	312	2.82%	1	0.03%	08/00	313	2.06%	18/03
	1-2 Years	2,233	20.17%	1,765	46.05%	01/07	3,998	26.37%	01/08

* C/SIF refers to non-substantive offenses such as conspiracy, solicitation, facilitation, aiding, and abetting, etc.
 * 87 offenders with sentences of life (80) and life without parole (7), as well as 257 judgement orders yet to be received are included in the TDOC counts, but are not included in the calculation of average sentence lengths.

Average Time Served by Primary Offense Releases by Location

Average Time Served by Location: FY 2007 - 2008 Felony Releases													
Primary Offense Category	TDOC INHOUSE			TDOC BACKUP			LOCALLY SENTENCED			SYSTEM-WIDE			
	Number of Offenders	%	Average Time Served (YY/MM)	Number of Offenders	%	Average Time Served (YY/MM)	Number of Offenders	%	Average Time Served (YY/MM)	Number of Offenders	%	Average Time Served (YY/MM)	
PERSON	Homicide												
	Murder	210	3.20%	16/05	13	0.29%	10/06	23	0.52%	02/11	246	1.58%	14/11
	Negligent Manslaughter	8	0.12%	03/08	6	0.13%	01/07	15	0.34%	01/09	29	0.19%	02/03
	Kidnapping	29	0.44%	10/05	14	0.31%	05/10	23	0.52%	02/07	66	0.42%	06/10
	Sex Offenses	282	4.30%	09/07	54	1.20%	04/03	59	1.32%	02/06	395	2.54%	07/10
	Forcible	47	0.72%	03/01	62	1.38%	01/10	27	0.61%	01/06	136	0.87%	02/03
	Non-Forcible	664	10.13%	06/00	319	7.08%	03/05	488	10.94%	02/05	1,471	9.45%	04/03
	Assault	48	0.73%	02/07	63	1.40%	01/07	81	1.82%	01/09	192	1.23%	01/11
	Aggravated Assault	40	0.61%	07/05	22	0.49%	03/10	15	0.34%	02/02	77	0.49%	05/05
	Simple Assault	1,039	15.85%	05/04	619	13.73%	02/10	766	17.17%	01/11	2,424	15.57%	03/08
PROPERTY	Burglary	243	3.71%	03/07	401	8.90%	02/02	246	5.51%	01/09	890	5.72%	02/06
	Forgery/Fraud	597	9.11%	04/00	583	12.94%	02/02	611	13.70%	01/09	1,791	11.51%	02/08
	Larceny/Theft	668	10.19%	09/00	204	4.53%	05/09	36	0.81%	02/06	908	5.83%	08/01
	Robbery	277	4.23%	05/08	102	2.28%	03/01	147	3.30%	02/09	526	3.38%	04/04
	Aggravated Robbery	1,084	16.54%	06/02	614	13.62%	03/06	638	14.30%	02/08	2,336	15.01%	04/07
SOCIAL	Other Drug Offenses	614	9.37%	04/00	605	13.42%	02/05	574	12.87%	01/10	1,793	11.52%	02/10
	Drug Offenses	34	0.52%	05/08	8	0.18%	04/08	6	0.13%	01/09	48	0.31%	05/01
	Vehicular Homicide/DUI	62	0.95%	02/11	95	2.11%	01/08	65	1.46%	01/06	222	1.43%	02/00
	All Other Vehicular	53	0.81%	08/01	18	0.40%	03/02	6	0.13%	00/09	77	0.49%	06/05
OTHER	C/S/F Person	49	0.75%	05/06	46	1.02%	02/04	58	1.30%	02/01	153	0.98%	02/11
	C/S/F Property	68	1.04%	05/01	80	1.78%	02/08	135	3.03%	02/00	283	1.82%	03/00
	C/S/F Societal/Drugs	16	0.24%	04/08	11	0.24%	02/06	5	0.11%	02/01	32	0.21%	03/06
	Escape	423	6.45%	03/00	568	12.60%	01/11	437	9.80%	01/06	1,428	9.17%	02/01
	All Other	0	0.00%	00/00	0	0.00%	00/00	0	0.00%	00/00	44	0.28%	00/00
TOTAL	6,555	100.0%	06/00	4,507	100.0%	02/09	4,461	100.0%	02/00	15,567	100.0%	04/00	

*Average time served does not include 44 offenders with judgment order changes.

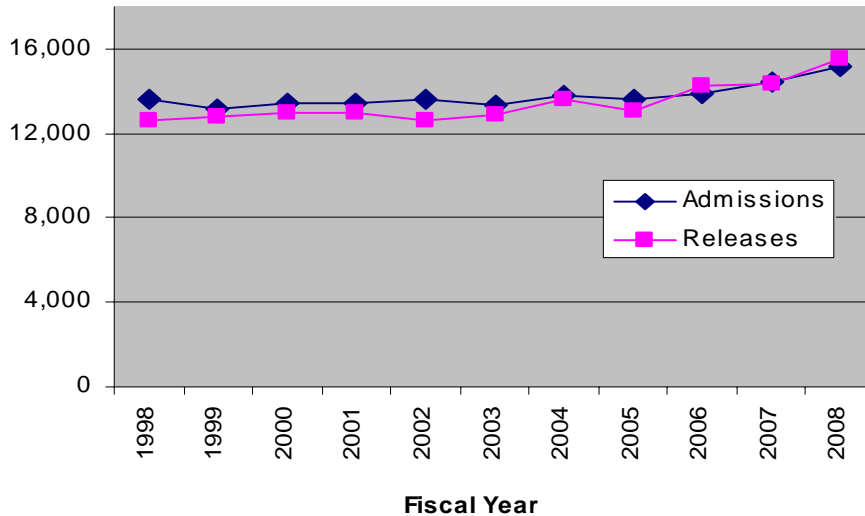
Average Time Served by Primary Offense Releases by Type

Felony Releases Average Time Served by Release Type: FY 2007 - 2008																			
PRIMARY OFFENSE GROUP	PAROLE			EXPIRATION			OTHER			PROBATION			COMMUNITY CORRECTIONS			SYSTEM-WIDE			
	Number of Offenders	%	Average Time Served (YY/MM)	Number of Offenders	%	Average Time Served (YY/MM)	Number of Offenders	%	Average Time Served (YY/MM)	Number of Offenders	%	Average Time Served (YY/MM)	Number of Offenders	%	Average Time Served (YY/MM)	Number of Offenders	%	Average Time Served (YY/MM)	
PERSON	Homicide																		
	Murder	134	3.14%	17/03	95	1.88%	11/09	12	5.06%	16/03	4	0.08%	08/07	1	0.09%	02/11	246	1.58%	14/11
	Negligent Manslaughter	3	0.07%	03/01	11	0.22%	03/03	0	0.00%	00/00	14	0.29%	01/05	1	0.09%	00/02	29	0.19%	02/03
	Kidnapping	9	0.21%	14/06	39	0.77%	06/07	2	0.84%	05/07	15	0.31%	02/05	1	0.09%	00/00	66	0.42%	06/10
	Sex Offenses																		
	Forcible	164	3.94%	06/09	162	3.20%	10/05	17	7.17%	09/04	48	0.99%	02/06	4	0.35%	00/10	395	2.54%	07/10
	Non-Forcible	1	0.02%	02/00	55	1.09%	03/07	2	0.84%	00/01	75	1.55%	01/04	3	0.27%	02/03	136	0.87%	02/03
	Assault																		
	Aggravated Assault	332	7.78%	06/01	671	13.27%	04/08	25	10.55%	04/00	365	7.55%	02/01	78	6.82%	02/04	1,471	9.45%	04/03
	Simple Assault	12	0.28%	03/08	43	0.85%	02/11	3	1.27%	01/05	123	2.54%	01/05	11	0.98%	01/10	192	1.23%	01/11
PROPERTY	Arcen	26	0.61%	06/04	29	0.57%	06/10	0	0.00%	00/00	18	0.37%	02/01	4	0.35%	03/10	77	0.49%	05/05
	Burglary	605	14.18%	05/01	972	19.22%	04/04	23	9.70%	04/11	640	13.24%	01/07	184	16.33%	01/09	2,424	15.57%	03/08
	Forgery/Fraud	157	3.88%	03/07	207	4.09%	03/08	17	7.17%	04/01	439	9.08%	01/06	70	6.21%	01/09	890	5.72%	02/06
	Larceny/Theft	367	8.80%	03/09	574	11.35%	03/08	22	9.28%	02/01	717	14.83%	01/06	111	9.85%	01/09	1,791	11.51%	02/08
	Robbery																		
	Aggravated Robbery	525	12.30%	08/01	319	6.31%	08/07	13	5.49%	09/04	35	0.72%	04/06	16	1.42%	03/05	908	5.83%	08/01
	All Other Robbery	187	4.38%	04/08	192	3.80%	05/03	9	3.80%	03/10	113	2.34%	02/06	25	2.22%	01/11	526	3.38%	04/04
	Drug Offenses																		
	Cocaine Offenses	882	20.80%	05/06	578	11.43%	05/08	28	11.81%	04/05	560	11.58%	02/08	278	24.67%	02/05	2,336	15.01%	04/07
	Other Drug Offenses	482	11.30%	03/10	436	8.62%	03/08	32	13.50%	02/00	636	13.16%	01/08	207	18.37%	01/11	1,793	11.52%	02/10
SOCIAL	Vehicle																		
	Vehicle/Homicide/DUI	20	0.47%	04/09	18	0.36%	06/08	2	0.84%	02/06	5	0.10%	02/10	3	0.27%	01/05	48	0.31%	05/01
	All Other Vehicular	16	0.37%	03/02	68	1.34%	02/11	2	0.84%	01/10	128	2.65%	01/04	8	0.71%	01/06	222	1.43%	02/00
	C/S F Person	34	0.80%	06/08	27	0.53%	07/03	3	1.27%	17/00	11	0.23%	01/04	2	0.18%	00/05	77	0.49%	06/05
	C/S F Property	36	0.84%	04/02	49	0.97%	03/09	1	0.42%	02/01	58	1.20%	01/06	9	0.80%	03/00	163	0.98%	02/11
	C/S F Societal/Drugs	48	1.12%	04/06	91	1.80%	03/07	6	2.53%	02/04	110	2.28%	02/00	28	2.48%	01/10	283	1.82%	03/00
	Escape	7	0.16%	04/11	11	0.22%	03/02	1	0.42%	01/05	12	0.25%	03/02	1	0.09%	04/05	32	0.21%	03/06
	All Other	210	4.92%	02/09	411	8.13%	03/02	17	7.17%	02/08	708	14.65%	01/03	82	7.28%	02/00	1,428	9.17%	02/01
	Unknown*	0	0.00%	00/00	0	0.00%	00/00	0	0.00%	00/00	0	0.00%	00/00	0	0.00%	00/00	44	0.28%	N/A
	TOTAL	4,267	100.00%	05/06	5,058	100.00%	04/11	237	100.00%	04/11	4,834	100.00%	01/09	1,127	100.00%	02/01	15,567	100.00%	04/00

*Average time served does not include 44 offenders with judgment order changes

ADMISSIONS AND RELEASES

**Yearly Admissions and Releases
Fiscal Years 1998 - 2008**



- The greatest change in releases occurred from local jails, a 27.2% increase from the prior year.
- Admissions increased 5.3% from the previous fiscal year.

Felony Admissions by Type: FY 2007 - 2008

TYPE	TDOC	%	LOCAL	%	SYSTEM-WIDE	%
Returned Escape & Others	132	1.2%	17	0.4%	149	1.0%
Parole, Probation, & Comm.Corr. Violators	4,874	44.0%	1,182	30.8%	6,056	40.6%
New Commitments	6,063	54.8%	2,634	68.7%	8,697	58.4%
TOTAL	11,069		3,833		14,902	

Felony Releases by Type: FY 2007 - 2008

TYPE	TDOC	%	BACK-UP	%	LOCAL	%	UNKNOWN*	%	SYSTEM-WIDE	%
Parole	3,230	49.2%	625	13.9%	412	9.2%	1	2.5%	4,268	27.4%
Probation/Community Corrections	864	13.2%	2,589	57.4%	2,510	56.3%	17	42.5%	5,980	38.4%
Sentence Expiration	2,371	36.1%	1,184	26.3%	1,505	33.7%	22	55.0%	5,082	32.6%
Death	53	0.8%	3	0.1%	0	0.0%	0	0.0%	56	0.4%
Other	41	0.6%	106	2.4%	34	0.8%	0	0.0%	181	1.2%
TOTAL	6,559		4,507		4,461		40		15,567	

Felony Admissions by Age, Race, and Gender: FY 2007 – 2008

AGE	TDOC	%	LOCAL	%	SYSTEM-WIDE	%
50+	777	7.0%	291	7.6%	1068	7.2%
40-49	2,308	20.9%	826	21.5%	3,134	21.0%
35-39	1,572	14.2%	509	13.3%	2,081	14.0%
30-34	1,803	16.3%	552	14.4%	2,355	15.8%
25-29	2,235	20.2%	763	19.9%	2,998	20.1%
20-24	2,034	18.4%	748	19.5%	2,782	18.7%
18-19	311	2.8%	138	3.6%	449	3.0%
<18*	29	0.3%	6	0.2%	35	0.2%
TOTAL	11,069		3,833		14,902	

* Includes 1 unknown in TDOC numbers

RACE	TDOC	%	LOCAL	%	SYSTEM-WIDE	%
Black	4,183	37.8%	2,726	71.1%	6,909	46.4%
White	6,663	60.2%	1,006	26.2%	7,669	51.5%
Other	223	2.0%	101	2.6%	324	2.2%
TOTAL	11,069		3,833		14,902	

GENDER	TDOC	%	LOCAL	%	SYSTEM-WIDE	%
Male	9,508	85.9%	3,396	88.6%	12,904	86.6%
Female	1,561	14.1%	437	11.4%	1,998	13.4%
TOTAL	11,069		3,833		14,902	

The system-wide total in the above three charts do not include 257 judgment orders yet to be received. Total admissions are 15,159.

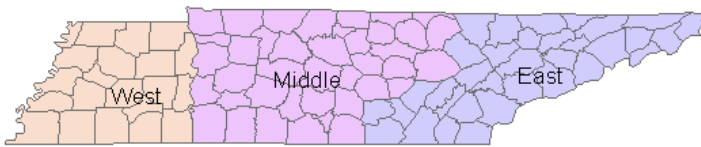
Felony Releases by Age, Race, and Gender: FY 2007 – 2008

AGE	TDOC	%	BACKUP	%	LOCAL	%	UNKNOWN	%	SYSTEM-WIDE	%
50+	660	10.1%	284	6.3%	350	7.8%	0	0.0%	1,294	8.3%
40-49	1,613	24.6%	916	20.3%	962	21.6%	6	15.0%	3,497	22.5%
35-39	1,024	15.6%	629	14.0%	608	13.6%	8	20.0%	2,269	14.6%
30-34	1,124	17.1%	782	17.4%	668	15.0%	7	17.5%	2,581	16.6%
25-29	1,331	20.3%	984	21.8%	903	20.2%	8	20.0%	3,226	20.7%
20-24	776	11.8%	851	18.9%	893	20.0%	10	25.0%	2,530	16.3%
18-19	30	0.5%	60	1.3%	76	1.7%	0	0.0%	166	1.1%
<18	1	0.0%	0	0.0%	1	0.0%	1	2.5%	3	0.0%
Unknown	0		1	0.0%	0	0.0%	0	0.0%	1	
TOTAL	6,559		4,507		4,461		40		15,567	

RACE	TDOC	%	BACK-UP	%	LOCAL	%	UNKNOWN	%	SYSTEM-WIDE	%
Black	2,683	40.9%	1,542	34.2%	2,963	66.4%	8	20.0%	7,196	46.2%
White	3,751	57.2%	2,908	64.5%	1,396	31.3%	30	75.0%	8,085	51.9%
Other	125	1.9%	57	1.3%	102	2.3%	2	5.0%	286	1.8%
TOTAL	6,559		4,507		4,461		40		15,567	

SEX	TDOC	%	BACK-UP	%	LOCAL	%	UNKNOWN	%	SYSTEM-WIDE	%
Male	5,982	91.2%	3,587	79.6%	3,866	86.7%	29	72.5%	13,464	86.5%
Female	577	8.8%	920	20.4%	595	13.3%	11	27.5%	2,103	13.5%
TOTAL	6,559		4,507		4,461		40		15,567	

Admissions by Geographical Region: FY 2007 - 2008



	TDOC	LOCAL FELON	SYSTEM-WIDE
West	2,325	2,350	4,675
Middle	4,521	1,196	5,717
East	4,223	287	4,510

The system-wide total in the above chart does not include 257 judgment orders yet to be received. Total admissions are 15,159.

Admissions by County of Conviction: FY 2007 - 2008

COUNTY	TDOC		LOCAL		SYSTEM-WIDE		COUNTY	TDOC		LOCAL		SYSTEM-WIDE	
	#	%	#	%	#	%		#	%	#	%	#	%
ANDERSON	57	0.5%	3	0.1%	60	0.4%	LAUDERDALE	67	0.6%	2	0.1%	69	0.5%
BEDFORD	168	1.5%	1	0.0%	169	1.1%	LAWRENCE	62	0.6%	0	0.0%	62	0.4%
BENTON	37	0.3%	1	0.0%	38	0.3%	LEWIS	21	0.2%	2	0.1%	23	0.2%
BLED SOE	8	0.1%	0	0.0%	8	0.1%	LINCOLN	85	0.8%	0	0.0%	85	0.6%
BLOUNT	178	1.6%	4	0.1%	182	1.2%	LOUDON	34	0.3%	0	0.0%	34	0.2%
BRADLEY	226	2.0%	4	0.1%	230	1.5%	MC MINN	166	1.5%	7	0.2%	173	1.2%
CAMPBELL	89	0.8%	5	0.1%	94	0.6%	MC NAIRY	34	0.3%	0	0.0%	34	0.2%
CANNON	51	0.5%	0	0.0%	51	0.3%	MACON	30	0.3%	1	0.0%	31	0.2%
CARROLL	45	0.4%	5	0.1%	50	0.3%	MADISON	376	3.4%	7	0.2%	383	2.6%
CARTER	121	1.1%	2	0.1%	123	0.8%	MARION	38	0.3%	1	0.0%	39	0.3%
CHEATHAM	38	0.3%	1	0.0%	39	0.3%	MARSHALL	104	0.9%	0	0.0%	104	0.7%
CHESTER	42	0.4%	3	0.1%	45	0.3%	MAURY	162	1.5%	6	0.2%	168	1.1%
CLAIBORNE	66	0.6%	1	0.0%	67	0.4%	MEIGS	9	0.1%	0	0.0%	9	0.1%
CLAY	15	0.1%	0	0.0%	15	0.1%	MONROE	120	1.1%	10	0.3%	130	0.9%
COCKE	65	0.6%	0	0.0%	65	0.4%	MONTGOMERY	112	1.0%	6	0.2%	118	0.8%
COFFEE	172	1.6%	9	0.2%	181	1.2%	MOORE	11	0.1%	1	0.0%	12	0.1%
CROCKETT	26	0.2%	0	0.0%	26	0.2%	MORGAN	12	0.1%	0	0.0%	12	0.1%
CUMBERLAND	69	0.6%	2	0.1%	71	0.5%	OBION	75	0.7%	1	0.0%	76	0.5%
DAVIDSON	1,309	11.8%	1,079	28.2%	2388	16.0%	OVERTON	49	0.4%	1	0.0%	50	0.3%
DECATUR	19	0.2%	2	0.1%	21	0.1%	PERRY	18	0.2%	1	0.0%	19	0.1%
DEKALB	39	0.4%	0	0.0%	39	0.3%	PICKETT	8	0.1%	0	0.0%	8	0.1%
DICKSON	77	0.7%	4	0.1%	81	0.5%	POLK	27	0.2%	0	0.0%	27	0.2%
DYER	135	1.2%	2	0.1%	137	0.9%	PUTNAM	142	1.3%	9	0.2%	151	1.0%
FAYETTE	52	0.5%	0	0.0%	52	0.3%	RHEA	21	0.2%	2	0.1%	23	0.2%
FENTRESS	50	0.5%	3	0.1%	53	0.4%	ROANE	34	0.3%	0	0.0%	34	0.2%
FRANKLIN	97	0.9%	8	0.2%	105	0.7%	ROBERTSON	102	0.9%	1	0.0%	103	0.7%
GIBSON	67	0.6%	5	0.1%	72	0.5%	RUTHERFORD	430	3.9%	35	0.9%	465	3.1%
GILES	57	0.5%	0	0.0%	57	0.4%	SCOTT	28	0.3%	3	0.1%	31	0.2%
GRAINGER	31	0.3%	1	0.0%	32	0.2%	SEQUATCHIE	23	0.2%	0	0.0%	23	0.2%
GREENE	74	0.7%	81	2.1%	155	1.0%	SEVIER	132	1.2%	5	0.1%	137	0.9%
GRUNDY	18	0.2%	0	0.0%	18	0.1%	SHELBY	897	8.1%	2,317	60.4%	3214	21.6%
HAMBLEN	136	1.2%	103	2.7%	239	1.6%	SMITH	41	0.4%	3	0.1%	44	0.3%
HAMILTON	409	3.7%	9	0.2%	418	2.8%	STEWART	9	0.1%	0	0.0%	9	0.1%
HANCOCK	19	0.2%	28	0.7%	47	0.3%	SULLIVAN	612	5.5%	5	0.1%	617	4.1%
HARDEMAN	72	0.7%	1	0.0%	73	0.5%	SUMNER	324	2.9%	8	0.2%	332	2.2%
HARDIN	43	0.4%	1	0.0%	44	0.3%	TIPTON	88	0.8%	0	0.0%	88	0.6%
HAWKINS	122	1.1%	0	0.0%	122	0.8%	TROUSDALE	26	0.2%	0	0.0%	26	0.2%
HAYWOOD	30	0.3%	1	0.0%	31	0.2%	UNICOI	36	0.3%	1	0.0%	37	0.2%
HENDERSON	48	0.4%	0	0.0%	48	0.3%	UNION	43	0.4%	1	0.0%	44	0.3%
HENRY	110	1.0%	0	0.0%	110	0.7%	VAN BUREN	9	0.1%	0	0.0%	9	0.1%
HICKMAN	48	0.4%	3	0.1%	51	0.3%	WARREN	76	0.7%	3	0.1%	79	0.5%
HOUSTON	9	0.1%	0	0.0%	9	0.1%	WASHINGTON	282	2.5%	6	0.2%	288	1.9%
HUMPHREYS	29	0.3%	2	0.1%	31	0.2%	WAYNE	54	0.5%	1	0.0%	55	0.4%
JACKSON	24	0.2%	0	0.0%	24	0.2%	WEAKLEY	39	0.4%	2	0.1%	41	0.3%
JEFFERSON	90	0.8%	2	0.1%	92	0.6%	WHITE	25	0.2%	1	0.0%	26	0.2%
JOHNSON	34	0.3%	1	0.0%	35	0.2%	WILLIAMSON	206	1.9%	3	0.1%	209	1.4%
KNOX	863	7.8%	2	0.1%	865	5.8%	WILSON	163	1.5%	2	0.1%	165	1.1%
LAKE	23	0.2%	0	0.0%	23	0.2%							
							TOTAL	11,069	100%	3,833	100%	14,902	100%

The system-wide total in the above three charts do not include 257 judgment orders yet to be received.
Total admissions are 15,159.

Felon Population by County of Conviction: FY 2007 – 2008

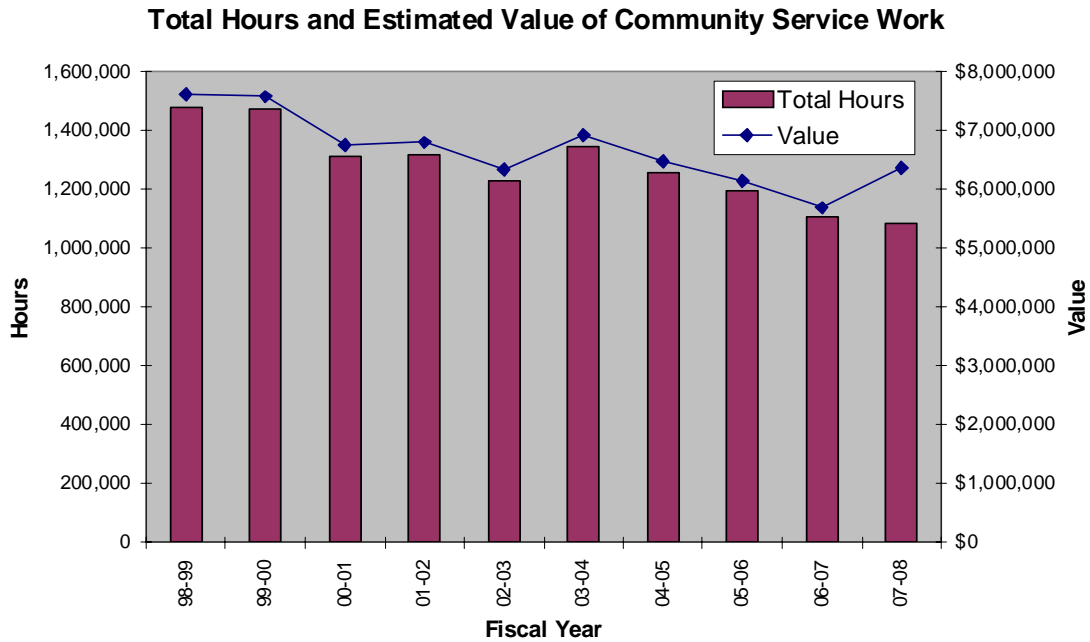
COUNTY	TDOC		BACKUP		LOCAL		SYSTEM-WIDE		COUNTY	TDOC		BACKUP		LOCAL		SYSTEM-WIDE	
	#	%	#	%	#	%	#	%		#	%	#	%	#	%	#	%
ANDERSON	93	0.5%	29	0.7%	2	0.1%	124	0.5%	LAUDERDALE	117	0.6%	32	0.7%	4	0.1%	153	0.6%
BEDFORD	241	1.2%	78	1.8%	2	0.1%	321	1.2%	LAWRENCE	118	0.6%	11	0.3%	1	0.0%	130	0.5%
BENTON	40	0.2%	15	0.3%	0	0.0%	55	0.2%	LEWIS	32	0.2%	6	0.1%	2	0.1%	40	0.1%
BLED SOE	25	0.1%	4	0.1%	0	0.0%	29	0.1%	LINCOLN	121	0.6%	29	0.7%	2	0.1%	152	0.6%
BLOUNT	274	1.4%	36	0.8%	1	0.0%	311	1.1%	LOUDON	50	0.3%	2	0.0%	6	0.2%	58	0.2%
BRADLEY	280	1.4%	112	2.6%	9	0.3%	401	1.5%	McMINN	190	1.0%	73	1.7%	5	0.2%	268	1.0%
CAMPBELL	134	0.7%	46	1.1%	13	0.4%	193	0.7%	McNAIRY	58	0.3%	11	0.3%	1	0.0%	70	0.3%
CANNON	58	0.3%	11	0.3%	0	0.0%	69	0.3%	MACON	30	0.2%	18	0.4%	0	0.0%	48	0.2%
CARROLL	92	0.5%	12	0.3%	2	0.1%	106	0.4%	MADISON	697	3.6%	47	1.1%	15	0.5%	759	2.8%
CARTER	116	0.6%	57	1.3%	21	0.7%	194	0.7%	MARION	79	0.4%	23	0.5%	3	0.1%	105	0.4%
CHEATHAM	96	0.5%	19	0.4%	2	0.1%	117	0.4%	MARSHALL	213	1.1%	29	0.7%	0	0.0%	242	0.9%
CHESTER	69	0.4%	6	0.1%	0	0.0%	75	0.3%	MAURY	324	1.7%	20	0.5%	0	0.0%	344	1.3%
CLAIBORNE	86	0.4%	42	1.0%	1	0.0%	129	0.5%	MEIGS	11	0.1%	6	0.1%	2	0.1%	19	0.1%
CLAY	6	0.0%	6	0.1%	1	0.0%	13	0.0%	MONROE	104	0.5%	61	1.4%	9	0.3%	174	0.6%
COCKE	147	0.8%	26	0.6%	3	0.1%	176	0.6%	MONTGOMERY	307	1.6%	38	0.9%	10	0.3%	355	1.3%
COFFEE	233	1.2%	45	1.0%	12	0.4%	290	1.1%	MOORE	15	0.1%	7	0.2%	1	0.0%	23	0.1%
CROCKETT	44	0.2%	14	0.3%	0	0.0%	58	0.2%	MORGAN	18	0.1%	6	0.1%	3	0.1%	27	0.1%
CUMBERLAND	115	0.6%	15	0.3%	3	0.1%	133	0.5%	OBION	144	0.7%	28	0.6%	3	0.1%	175	0.6%
DAVIDSON	3,172	16.4%	359	8.3%	901	28.5%	4432	16.3%	OVERTON	30	0.2%	33	0.8%	0	0.0%	63	0.2%
DECATUR	36	0.2%	2	0.0%	3	0.1%	41	0.2%	PERRY	35	0.2%	4	0.1%	0	0.0%	39	0.1%
DEKALB	70	0.4%	6	0.1%	0	0.0%	76	0.3%	PICKETT	7	0.0%	5	0.1%	0	0.0%	12	0.0%
DICKSON	129	0.7%	38	0.9%	3	0.1%	170	0.6%	POLK	41	0.2%	25	0.6%	3	0.1%	69	0.3%
DYER	193	1.0%	53	1.2%	1	0.0%	247	0.9%	PUTNAM	177	0.9%	50	1.2%	6	0.2%	233	0.9%
FAYETTE	69	0.4%	38	0.9%	3	0.1%	110	0.4%	RHEA	62	0.3%	11	0.3%	2	0.1%	75	0.3%
FENTRESS	58	0.3%	41	0.9%	1	0.0%	100	0.4%	ROANE	75	0.4%	9	0.2%	2	0.1%	86	0.3%
FRANKLIN	137	0.7%	27	0.6%	8	0.3%	172	0.6%	ROBERTSON	188	1.0%	20	0.5%	4	0.1%	212	0.8%
GIBSON	164	0.8%	23	0.5%	1	0.0%	188	0.7%	RUTHERFORD	454	2.3%	207	4.8%	14	0.4%	675	2.5%
GILES	129	0.7%	14	0.3%	2	0.1%	145	0.5%	SCOTT	67	0.3%	15	0.3%	4	0.1%	86	0.3%
GRAINGER	45	0.2%	13	0.3%	1	0.0%	59	0.2%	SEQUATCHIE	35	0.2%	17	0.4%	3	0.1%	55	0.2%
GREENE	136	0.7%	48	1.1%	69	2.2%	253	0.9%	SEVIER	243	1.3%	63	1.5%	9	0.3%	315	1.2%
GRUNDY	39	0.2%	8	0.2%	0	0.0%	47	0.2%	SHELBY	2416	12.5%	916	21.2%	1,730	54.7%	5062	18.6%
HAMBLEN	185	1.0%	49	1.1%	48	1.5%	282	1.0%	SMITH	51	0.3%	14	0.3%	1	0.0%	66	0.2%
HAMILTON	897	4.6%	74	1.7%	19	0.6%	990	3.6%	STEWART	21	0.1%	1	0.0%	1	0.0%	23	0.1%
HANCOCK	24	0.1%	9	0.2%	13	0.4%	46	0.2%	SULLIVAN	720	3.7%	238	5.5%	18	0.6%	976	3.6%
HARDEMAN	112	0.6%	6	0.1%	5	0.2%	123	0.5%	SUMNER	447	2.3%	105	2.4%	48	1.5%	600	2.2%
HARDIN	79	0.4%	8	0.2%	0	0.0%	87	0.3%	TIPTON	162	0.8%	20	0.5%	11	0.3%	193	0.7%
HAWKINS	115	0.6%	43	1.0%	0	0.0%	158	0.6%	TROUSDALE	34	0.2%	12	0.3%	0	0.0%	46	0.2%
HAYWOOD	57	0.3%	20	0.5%	2	0.1%	79	0.3%	UNICOI	44	0.2%	20	0.5%	5	0.2%	69	0.3%
HENDERSON	98	0.5%	7	0.2%	2	0.1%	107	0.4%	UNION	59	0.3%	25	0.6%	1	0.0%	85	0.3%
HENRY	136	0.7%	36	0.8%	0	0.0%	172	0.6%	VAN BUREN	19	0.1%	0	0.0%	0	0.0%	19	0.1%
HICKMAN	67	0.3%	19	0.4%	3	0.1%	89	0.3%	WARREN	175	0.9%	21	0.5%	4	0.1%	200	0.7%
HOUSTON	14	0.1%	3	0.1%	2	0.1%	19	0.1%	WASHINGTON	301	1.6%	138	3.2%	36	1.1%	475	1.7%
HUMPHREYS	55	0.3%	3	0.1%	1	0.0%	59	0.2%	WAYNE	74	0.4%	18	0.4%	0	0.0%	92	0.3%
JACKSON	26	0.1%	16	0.4%	0	0.0%	42	0.2%	WEAKLEY	57	0.3%	22	0.5%	3	0.1%	82	0.3%
JEFFERSON	140	0.7%	71	1.6%	8	0.3%	219	0.8%	WHITE	49	0.3%	11	0.3%	1	0.0%	61	0.2%
JOHNSON	26	0.1%	20	0.5%	1	0.0%	47	0.2%	WILLIAMSON	276	1.4%	50	1.2%	2	0.1%	328	1.2%
KNOX	1555	8.0%	118	2.7%	14	0.4%	1687	6.2%	WILSON	276	1.4%	40	0.9%	2	0.1%	318	1.2%
LAKE	22	0.1%	19	0.4%	1	0.0%	42	0.2%	*UNKNOWN							400	1.5%
									TOTAL	19,357	100%	4321	100%	3,161	100%	27,239	100%



Offender Accountability, Programs & Services



HOURS AND VALUE OF COMMUNITY SERVICE WORK



Community Service Work Hours Worked by Facility: FY 2007-2008

	1st Quarter	2nd Quarter	3rd Quarter	4th Quarter	Facility Total
BMCX	16,377	14,848	15,189	17,628	64,042
HCCF	3,106	3,653	2,571	2,976	12,306
MCCX	36,414	33,934	25,754	27,761	123,863
MLCC	6,710	3,144	2,033	4,411	16,298
CBCX	57,550	53,448	54,194	59,490	224,682
NECX	56,954	53,628	53,659	54,784	219,025
NWCX	16,384	11,206	16,814	18,510	62,914
SCCF	5,277	2,771	3,737	6,041	17,826
STSR	10,504	9,390	9,376	9,176	38,446
TPFW	34,937	36,854	36,544	34,876	143,211
TCIP	0	0	0	0	0
WCBC	45,773	36,099	35,097	39,645	156,614
WTSP	4,048	1,184	624	1,192	7,048
SYSTEM	294,034	260,159	255,592	276,490	1,086,275
TOTAL SAVINGS: Dollar Value @ Minimum Wage					\$6,354,708.75

INMATE ASSIGNMENTS

INMATE ASSIGNMENTS

June 30, 2008

Assignment	Inmates	% of Population
Academic Education	2,048	10.4%
Vocational Programs	1,537	7.8%
Support	5,374	27.5%
Program Services	1,362	7.0%
TRICOR	679	3.4%
Work Lines	360	1.8%
Other Agencies	145	0.7%
Community Service	503	2.6%
Work Release	52	0.3%
Mental Health	476	2.4%
Boot Camp	67	0.3%
Pre-Release	421	2.2%
Recycling	203	1.0%
Substance Abuse	974	5.0%
Transition Center Program	86	0.4%
Technical Viol. Diversion Program	131	0.7%
Other	871	4.5%
Total Assigned	15,289	78.0%
Unassignable Status*	2,692	14.0%
Job Waiting List	1,540	8.0%
TOTAL INMATES	19,521	100.0%
% of Eligible Inmates Assigned	16,829	91.0%

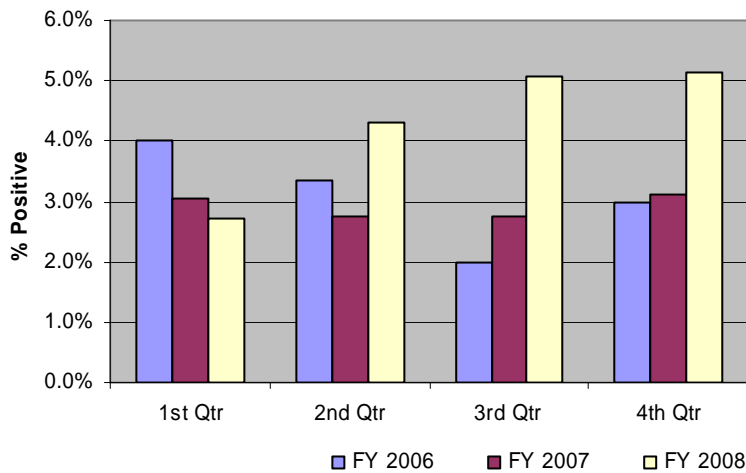
*Inmates who can not be assigned due to their status, which may include those in segregation, classification, etc.

DRUG SCREENS: FY 2007 – 2008

Random drug screens are conducted monthly on 2.5% of the inmate population. These screens are necessary to identify the use of contraband substances frequently used in prison. In addition, substance abuse program participants are randomly selected for regularly scheduled drug tests. All positive screens are confirmed through additional testing, and graduated sanctions are used for any positive drug screen.

FY 2008				FY 2008	FY 2007	FY 2006
QTR	NUMBER TESTED	REFUSED	POSITIVE	%POSITIVE	%POSITIVE	%POSITIVE
1ST	2,837	22	55	2.7%	3.0%	4.0%
2ND	2,950	28	99	4.3%	2.8%	3.3%
3RD	2,774	26	115	5.1%	2.8%	2.0%
4TH	3,055	29	128	5.1%	3.1%	3.0%

Positive Drug Test Results by Percentage



EDUCATION: FY 2007 – 2008

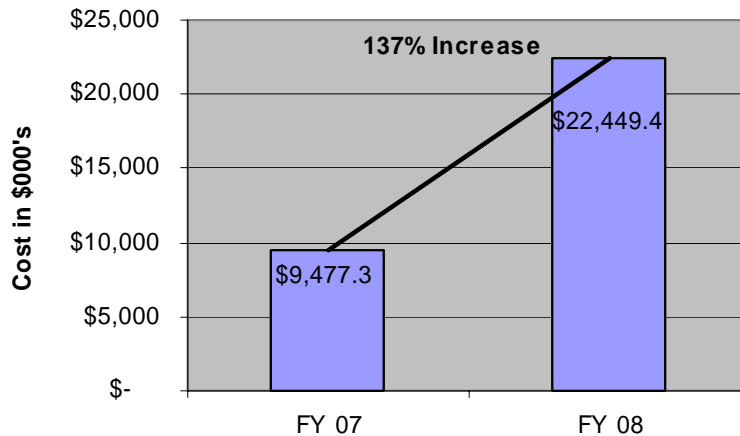
EDUCATIONAL ENROLLMENT: FY 2007-2008								
INSTITUTION	ABE/GED		SEGREGATED Closed Circuit TV	VOLUNTEER LITERACY	COLLEGE*	VOCATIONAL		TOTAL
	Full-Time	Part-Time				Full-time	Part-Time	
BMCX	0	16	0	0	0	0	0	16
CBCX	0	99	0	37	10	0	0	146
DSNF	0	142	0	0	5	0	0	147
HCCF	1540	0	0	0	7	522	0	2069
MCCX	547	0	0	39	25	179	0	790
MLCC	178	0	0	12	27	98	0	315
NECX	372	1	0	26	75	409	1	884
NWCX	136	0	0	32	17	928	0	1113
RMSI	164	22	0	59	17	157	0	419
SCCF	975	17	0	0	22	675	0	1689
STSRCF	145	15	0	80	0	258	0	498
TCIP	354	0	0	0	33	359	0	746
TPW	277	0	0	0	34	198	0	509
WCBC	55	75	0	0	0	0	0	130
WCF	1038	0	0	0	1	348	0	1387
WTSP	676	0	152	41	1	832	0	1702
YEARLY TOTALS	6457	387	152	326	274	4963	1	12560

TEST RESULTS: FY 2007-2008				
INSTITUTION	GED			VOCATIONAL
	Tested	# Passing	% Passed	# Graduates
BMCX	19	16	84.2%	0
CBCX	49	14	28.6%	0
DSNF	20	13	65.0%	0
HCCF	102	67	65.7%	169
MLCC	12	10	83.3%	23
MCCX	63	51	81.0%	53
NECX	61	47	77.0%	114
NWCX	215	122	56.7%	267
RMSI	58	37	63.8%	33
SCCF	129	70	54.3%	167
STSRCF	73	58	79.5%	109
TCIP	27	23	85.2%	132
TPW	41	40	97.6%	27
WCBC	65	52	80.0%	0
WTSP	154	96	62.3%	135
WCFA	90	70	77.8%	113
SYSTEM-WIDE TOTAL	1178	786	66.7%	1342

GED & Vocational Certificates: FY 2000-2008									
FY	2000	2001	2002	2003	2004	2005	2006	2007	2008
G.E.D	609	766	511	326	606	598	464	685	786
Vocational	651	692	865	425	1434	1765	1473	1365	1342

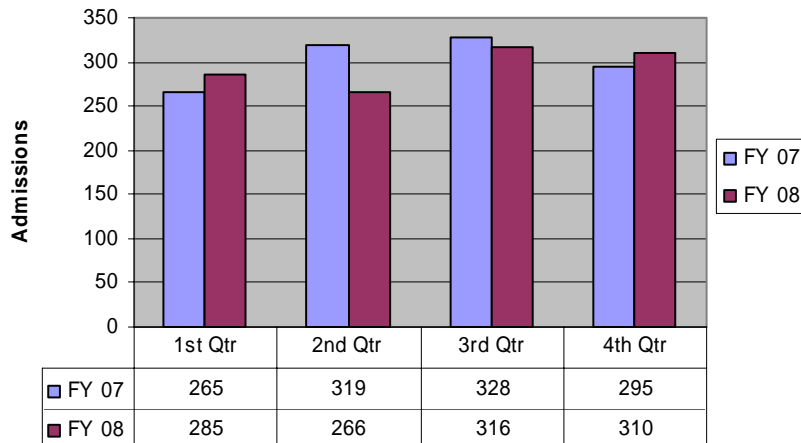
CLINICAL SERVICES DIVISION
Health Services

Hospital Inpatient Cost Comparison

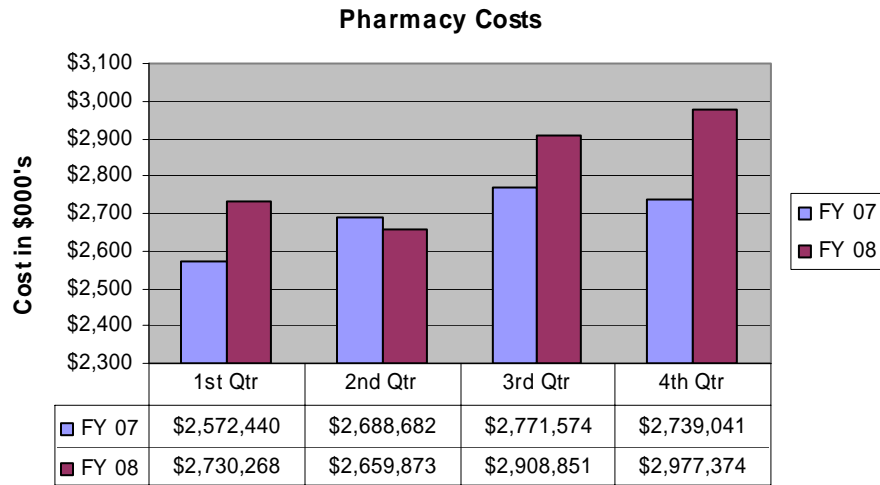


In FY 2008, the medical costs associated with the care and treatment of inmates escalated by \$13 million (See chart). During this year there were 1,177 hospital admissions resulting in an average length of stay (ALOS) of 3.88 days (See chart). Other factors contributing to the rise in the Department's health care costs include the increasing diagnosis and treatment of cancer and liver disease, as well as pharmacy costs.

Number of Hospital Admissions



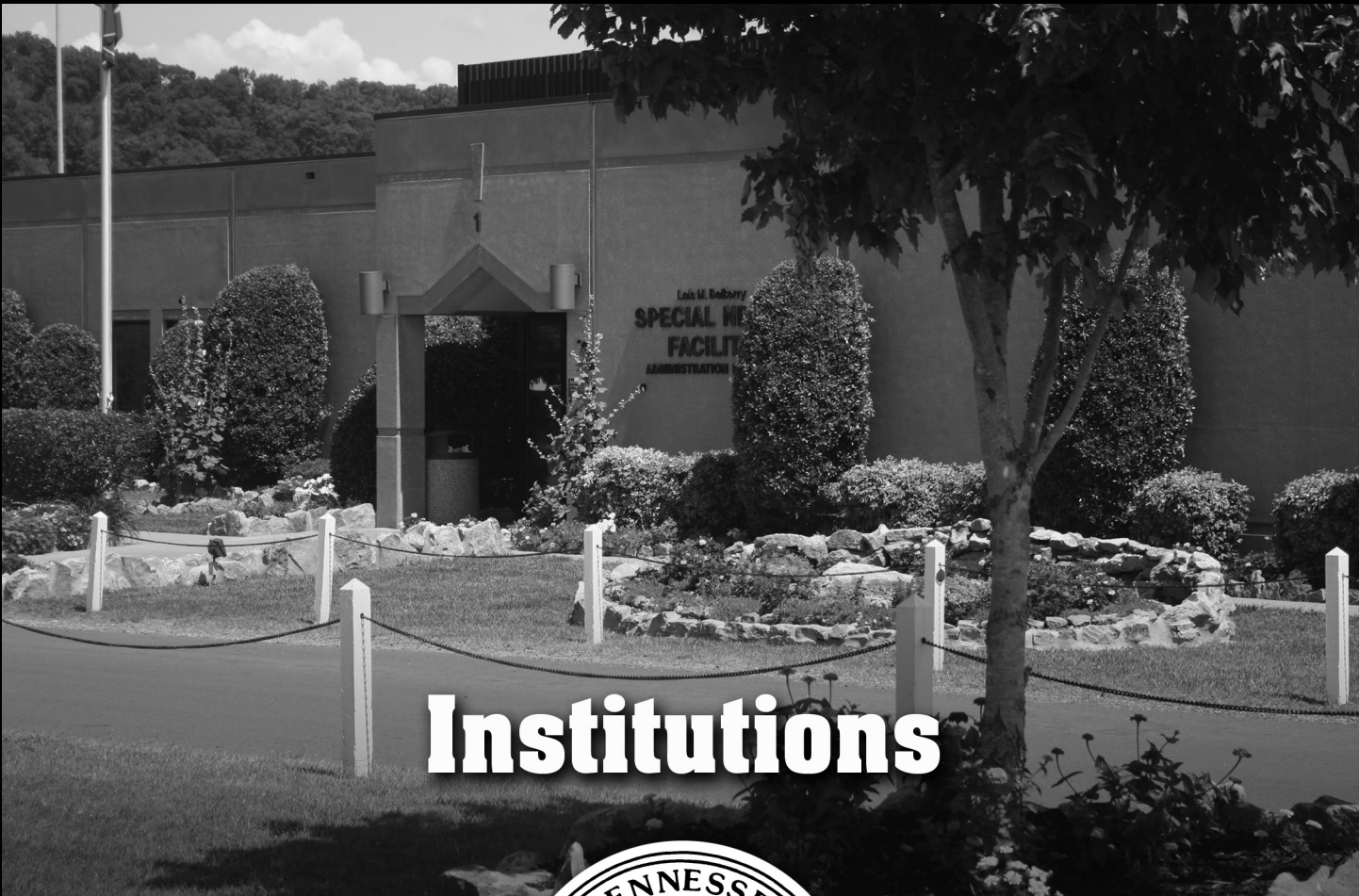
In FY 2008, pharmacy costs for the TDOC were \$11.3 million. This cost represents a 4.7% increase over FY 2007 (See Table 3). The costs for Hepatitis C drug therapy increased by 11.5% to \$764,624, with an average of 48 inmates treated per month at \$1,454 per inmate. The cost for HIV therapy was \$2.5 million in FY 2008, with an average of 159 inmates treated per month at a cost of \$1,459 per inmate.



Mental Health Services

Over the last ten years, the mental health case load has continued to grow statewide. There are approximately 5,442 mentally ill inmates diagnosed within the TDOC system. In the last few fiscal years, TDOC has utilized its resources to meet this increasing demand by implementing case management and utilization review. Of the 5,442 inmates with mental health diagnoses within TDOC, 1,999 had a serious mental illness (e.g., Schizophrenia, Bipolar, Major Depression, and Psychosis) and 741 were diagnosed with co-occurring disorders. A total of 4,168 offenders with mental illness received psychiatric medication management.

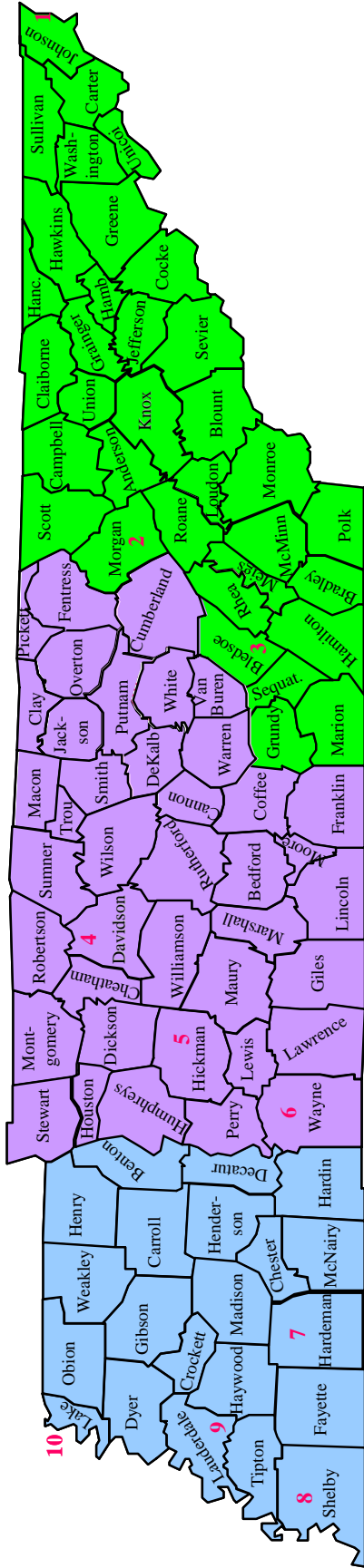
Mental Health Clinic Encounters for Female Offenders: FY 07 - 08			
	MLCC	TPFW	TOTAL
Case Consultation	140	12	152
Individual Psychotherapy	244	120	364
Psychiatry: Diagnostic Assessment	162	2116	2278
Medication Renewal	20	194	214
Psychiatry: 90 Day Follow-up	302	270	572
Treatment Plan Development	162	108	270
Total Encounters	1030	2820	3850
<i>Note: An inmate may be seen in mental health clinic for multiple services. This is a duplicated count.</i>			



Institutions



TDOC Facilities and Security Designations: June 30, 2008



Custody Level	Number of Offenders	Percent of Total
Maximum	874	4.5%
Close	609	3.1%
Medium	14,040	72.5%
Minimum	3,663	18.9%
Unclassified	180	0.9%
TOTAL	19,366	100.0%

County	Facility	Security Level
1. Johnson	Northeast Correctional Complex	Maximum
2. Morgan	Brushy Mountain Correctional Complex Morgan County Correctional Complex	Maximum Minimum
3. Bledsoe	Southeastern TN State Regional Correctional Facility	Close
4. Davidson	Charles Bass Correctional Complex DeBerry Special Needs Facility Riverbend Maximum Security Institution Tennessee Prison for Women	Close Maximum Maximum Maximum
5. Hickman	Turney Center Industrial Prison	Close
6. Wayne	South Central Correctional Facility Wayne County Boot Camp	Close Minimum
7. Hardeman	Hardeman County Correctional Facility Whiteville Correctional Facility	Medium Medium
8. Shelby	Mark Luttrell Correctional Center	Close
9. Lauderdale	West Tennessee State Penitentiary	Maximum
10. Lake	Northwest Correctional Complex	Close

Average Daily Population: FY 2007-2008

Institution	Average Daily Population
Brushy Mountain Correctional Complex	533
Charles Bass Correctional Complex	1041
DeBerry Special Needs Facility	727
Hardeman County Correctional Facility	1994
Mark Luttrell Correctional Center	407
Morgan County Correctional Complex	975
Northeast Correctional Complex	1807
Northwest Correctional Complex	2326
Riverbend Maximum Security Institution	709
South Central Correctional Facility	1651
Southeastern TN State Regional Corr. Facility	945
Tennessee Prison for Women	738
Turney Center Industrial Prison and Farm	1215
Wayne County Boot Camp	376
Whiteville Correctional Facility	1512
West Tennessee State Penitentiary	2485
System Total	19440

Source: TDOC Bedspace and Operating Capacities Report

Demographics by Facility

	AGE									RACE			GENDER	
	<20	20-24	25-29	30-34	35-39	40-49	50+	Not Known	Avg Age	Black	White	Other/Unknown	Male	Female
BMCX	2	58	119	89	85	108	47	0	35.2	155	349	4	508	0
CBCX	9	130	166	184	154	245	97	1	35.8	517	443	26	986	0
DSNF	3	33	67	75	74	170	215	0	43.9	225	396	16	637	0
HCCF	6	226	402	354	309	477	212	0	36.1	1,053	893	40	1986	0
MCCX	8	79	157	155	137	284	168	0	38.7	214	761	13	988	0
MLCC	0	36	78	69	94	93	36	0	36.2	152	242	12	0	406
NECX	2	136	286	278	309	531	275	0	38.6	476	1,297	44	1,817	0
NWCX	66	305	374	338	316	578	371	0	37.1	1,075	1,175	98	2,348	0
RMSI	2	56	124	106	96	177	128	0	38.5	367	312	10	689	0
SCCF	7	214	310	298	231	386	198	0	36.2	759	828	57	1,644	0
STSR	2	52	133	158	161	256	184	0	39.5	285	652	9	946	0
TCIP	4	131	256	257	185	288	135	0	36.1	665	550	41	1,256	0
TPFW	3	54	122	150	141	189	85	0	37.0	170	563	11	0	744
WANX	1	8	41	43	48	72	87	0	42.4	150	150	0	300	0
WCBC	1	39	21	7	1	0	0	0	24.3	40	29	0	69	0
WCFA	21	223	371	241	216	300	157	0	34.7	919	590	20	1,529	0
WTSP	33	336	511	455	407	511	260	0	35.2	1,410	1,044	59	2,513	0
SYSTEM	170	2,116	3,538	3,257	2,964	4,665	2,655	1	36.8	8,632	10,274	460	18,216	1150

Facility Populations by Primary Offense: June 30, 2008

Facility Population	Percent of Individual Facility Population															
	BMCX	CBCX	DSNF	HCCF	MCCX	MLCC	NECX	NWCX	RMSI	SCCF	STSRC	TCIP	TPW	WCBC	WCFA	WTSP
OFFENSE	497	1,063	745	1,985	977	406	1,826	2,325	702	1,644	942	1,251	748	365	1,520	2,501
PERSON OFFENSES	30%	21%	65%	51%	56%	35%	53%	48%	65%	40%	62%	50%	36%	0%	39%	43%
Homicide	11%	7%	23%	16%	26%	19%	23%	16%	42%	13%	28%	25%	20%	0%	13%	18%
Kidnapping	0%	1%	1%	1%	1%	1%	2%	1%	1%	1%	1%	1%	1%	0%	1%	2%
Sex Offenses	3%	4%	33%	20%	20%	2%	16%	18%	12%	16%	23%	14%	3%	0%	11%	10%
Assault	15%	9%	8%	13%	9%	13%	11%	12%	11%	10%	10%	10%	11%	0%	14%	13%
PROPERTY OFFENSES	42%	38%	21%	31%	26%	34%	29%	31%	26%	32%	24%	28%	34%	38%	33%	34%
Arson	1%	0%	1%	0%	1%	1%	1%	1%	0%	1%	1%	0%	0%	0%	1%	0%
Burglary	19%	15%	6%	8%	9%	8%	9%	10%	4%	10%	6%	7%	8%	28%	9%	11%
Forgery/Fraud	3%	2%	1%	1%	1%	8%	1%	1%	0%	1%	0%	1%	8%	4%	2%	2%
Larceny/Theft	9%	5%	2%	4%	5%	7%	5%	4%	2%	5%	3%	3%	9%	1%	5%	4%
Robbery	10%	15%	12%	17%	10%	11%	13%	16%	19%	15%	14%	17%	9%	4%	17%	17%
SOCIETAL OFFENSES	21%	33%	10%	15%	14%	21%	14%	15%	7%	22%	11%	19%	21%	62%	21%	17%
Drugs/Narcotics	19%	32%	9%	13%	13%	19%	11%	14%	7%	21%	10%	18%	19%	62%	20%	16%
Vehicular Homicide/DUI	2%	1%	1%	1%	2%	2%	3%	1%	0%	1%	1%	1%	2%	0%	1%	1%
ALL OTHER OFFENSES	7%	8%	3%	4%	3%	10%	4%	5%	1%	5%	5%	4%	8%	0%	6%	6%
C/S/F Person*	0%	1%	1%	1%	1%	4%	1%	1%	0%	1%	1%	1%	3%	0%	2%	1%
C/S/F Property*	0%	1%	0%	0%	0%	2%	0%	0%	0%	0%	0%	0%	1%	0%	0%	0%
C/S/F Societal*	0%	2%	0%	1%	0%	1%	0%	1%	0%	1%	2%	1%	1%	0%	1%	0%
Escape	0%	0%	0%	0%	0%	0%	0%	0%	0%	0%	0%	0%	0%	0%	0%	0%
All Other	6%	4%	3%	2%	2%	3%	3%	4%	1%	3%	2%	1%	3%	0%	4%	4%
TOTAL	100%	100%	100%	100%	100%	100%	100%	100%	100%	100%	102%	100%	100%	100%	100%	100%

Note: Facilities totals do not include 9 missing or unprocessed judgement orders. * C/S/F = Refers to non-substantive offenses such as conspiracy, solicitation, facilitation, aiding and abetting, etc.

Incidents: FY 2007 - 2008

	1st Qtr	2nd Qtr	3rd Qtr	4th Qtr	Total
Rape	0	0	0	0	0
Weapon Offenses	154	173	180	181	688
Drug Offenses	106	126	135	146	513
STG Offenses	114	109	117	164	504
Riot	1	0	0	0	1
Sexual Misconduct	204	203	185	207	799
Assault					
Assault on Offender	88	93	74	105	360
Assault on Staff	119	151	163	171	604
Death					
Homicide	0	0	0	0	0
Suicide	0	1	0	1	2
Accidental Death	0	1	0	2	3
Natural Death	16	15	18	14	63
Electrocution	1	0	0	0	1
Escape					
Secure Supervision	0	0	0	0	0
Minimum Security	1	0	0	1	2
Minimum Security - Work Crew - Supervised	0	0	0	1	1
Minimum Security - Work Crew - Unsupervised	1	0	0	0	1
Furlough/Pass	0	0	0	0	0
Non-Violent Incident Rate (per 100 inmates)	11.43	11.11	11.53	12.35	46.4
Violent Incident Rate (per 100 inmates)	1.56	1.61	1.60	1.92	6.68
Total Incident Rate (per 100 inmates)	12.98	12.71	13.12	14.27	53.07

TDOC INCIDENT SUMMARY: FY 2007 - 2008

Inc. Type	V?	Average Population	Incident Description																	SYSTEM
			WCBC	MLCC	ITPW	RMSI	DSNF	STSRC	CBCX	TCIP	SCCC	NECX	MCCX	BMCX	WTSF	HCCC	NWCX	WCFA		
			376	403	732	701	712	938	1017	1200	1626	1787	971	530	2443	1961	2293	1484	19174	
Arrest		ABT FURL/PASS-VIOLENT CRIME	0	0	0	0	0	0	0	0	0	0	0	0	0	0	0	0	0	
Arrest		ABS FURL/PASS-FELONY	0	0	0	0	0	0	0	0	0	0	0	0	0	0	0	0	0	
Arrest		ABM FURL/PASS-MISDEMEANOR	0	0	0	0	0	0	0	0	0	0	0	0	0	0	0	0	0	
Arrest		AFO FELONY-OFN	0	0	0	0	0	0	0	0	0	0	0	0	0	0	0	0	0	
Arrest		AFS FELONY-STAFF	0	0	0	0	0	0	1	0	2	0	1	0	3	2	2	3	14	
Arrest		AFV FELONY-VISITOR	1	0	0	1	0	0	0	8	5	1	2	2	12	2	4	2	40	
Arson *		ARI SER-INV-PROP DMG->\$500-OPER DISRUP	0	0	0	0	0	0	0	0	0	0	0	0	0	0	0	0	0	
Arson *		ARD INJURY-PROP DMG->\$500-OPR DISRUP	0	0	0	0	0	0	0	0	0	0	0	0	0	0	0	0	0	
Arson *		ARP PROP DMG->\$500	0	0	0	1	0	0	0	0	0	1	0	0	0	0	0	0	2	
Assault *		ASA STAFF-SERIOUS INJURY	0	0	0	1	1	0	1	1	0	0	0	0	0	1	1	0	6	
Assault *		ASB STAFF-INJURY	0	0	1	3	9	0	0	9	9	4	0	7	3	7	5	2	59	
Assault *		ASC STAFF-MINOR INJURY	0	1	2	8	16	1	2	14	14	9	1	7	37	19	13	10	154	
Assault *		ASJ STAFF-NO INJURY	1	2	1	58	24	2	7	32	35	8	3	21	61	59	48	23	385	
Assault *		ASD OFN-SERIOUS INJURY	0	0	1	1	0	0	2	7	3	4	0	1	5	4	4	3	35	
Assault *		ASE OFN-INJURY	0	7	0	1	1	3	4	6	15	6	1	0	9	5	10	16	84	
Assault *		ASF OFN-MINOR INJURY	3	9	5	2	6	4	4	10	8	19	2	1	12	12	19	29	145	
Assault *		ASK OFN-NO INJURY	2	2	8	10	6	1	8	2	7	4	2	2	8	9	18	7	96	
Assault *		ASG VIS-SERIOUS INJURY	0	0	0	0	0	0	0	0	0	0	0	0	0	0	0	0	0	
Assault *		ASH VIS-INJURY	0	0	0	0	0	0	0	0	0	0	0	0	0	0	0	0	0	
Assault *		ASI VIS-MINOR INJURY	0	0	0	0	0	0	0	0	0	1	0	0	0	1	0	0	2	
Assault *		ASM VIS-NO INJURY	0	0	0	0	0	0	0	0	0	0	1	0	0	0	1	0	2	
Death		DEA OFN-NATURAL	0	0	1	1	46	2	1	2	1	1	0	1	3	2	2	0	63	
Death		DEC DEATH-OFN-EXEC-ELEC CHR	0	0	0	1	0	0	0	0	0	0	0	0	0	0	0	0	1	
Death *		DEH OFN-HOMICIDE	0	0	0	0	0	0	0	0	0	0	0	0	0	0	0	0	0	
Death		DEI OFN-EXEC-LETH INJ	0	0	0	0	0	0	0	0	0	0	0	0	0	0	0	0	0	
Death *		DES OFN-SUICIDE	0	0	0	0	1	0	0	0	0	1	0	0	0	0	0	0	2	
Death		DOA OFN-ACCIDENT	0	0	0	0	1	0	0	0	0	0	0	0	0	0	1	1	3	
Death *		DEG STAFF-HOMICIDE (ON DUTY)	0	0	0	0	0	0	0	0	0	0	0	0	0	0	0	0	0	
Death *		DEF STAFF-SUICIDE (ON DUTY)	0	0	0	0	0	0	0	0	0	0	0	0	0	0	0	0	0	
Death		DED STAFF-ACCIDENT (ON DUTY)	0	0	0	0	0	0	0	0	0	0	0	0	0	0	0	0	0	
Death		DET STAFF (ON DUTY)-NATURAL	0	0	0	0	0	0	0	0	0	0	0	0	0	0	0	0	0	
Death		DEV VISITOR	0	0	0	0	0	0	0	0	0	0	0	0	0	0	0	0	0	
Death *		DVH VISITOR-HOMICIDE	0	0	0	0	0	0	0	0	0	0	0	0	0	0	0	0	0	
Death *		DVS VISITOR-SUICIDE	0	0	0	0	0	0	0	0	0	0	0	0	0	0	0	0	0	
Death		DVA VISITOR-ACCIDENT	0	0	0	0	0	0	0	0	0	0	0	0	0	0	0	0	0	
Death		DVN VISITOR-NATURAL	0	0	0	0	0	0	0	0	0	0	0	0	0	0	0	0	0	
Disturbance		DIL TEMP. CONTROL LOSS	0	0	1	1	0	0	0	0	0	0	0	0	0	0	0	0	0	
Disturbance		DIR THREAT CONTROL LOSS	0	0	0	0	0	0	0	0	0	0	0	0	0	0	0	0	0	
Disturbance		DIS MINOR	28	17	74	61	44	39	21	180	225	120	76	75	229	280	483	195	2147	

TDOC INCIDENT SUMMARY: FY 2007 - 2008

Inc Type	V?	Average Population	WBBC	MLCC	TPW	RMSI	DSNF	STSRC	CBXC	TCIP	SCCC	NECX	MCCX	BMCX	WTSP	HCCC	NWCX	WCFA	SYSTEM
			376	403	732	701	712	938	1017	1200	1626	1787	971	530	2443	1961	2293	1484	19174
Other	BOMB THREAT	0	0	0	0	0	0	0	0	0	0	0	0	0	0	0	0	0	0
Other	CONTRABAND	18	66	37	247	79	105	46	46	207	192	139	70	66	219	113	198	134	1936
Other	PDA PROP DMG->\$500	0	1	2	7	2	5	7	7	11	1	4	4	4	9	0	2	0	59
Other	SXM SEXUAL MISCONDUCT	2	1.6	23	100	24	23	16	16	36	87	66	1	19	93	12	272	9	799
Other	* Rape	0	0	0	0	0	0	0	0	0	0	0	0	0	0	0	0	0	0
Other	* RIO RIOT	0	0	0	0	0	0	0	0	1	0	0	0	0	0	0	0	0	1
Other	SBT Sabotage - OPR DISRUP	0	0	0	0	0	0	0	0	0	0	0	0	0	0	0	0	0	0
Other	* HOS HOSTAGE SITUATION	0	0	0	0	0	0	0	0	0	0	0	0	0	0	0	0	0	0
Other	EHT Epidemic Public Health Threat	0	0	0	0	0	0	0	0	0	0	0	0	0	0	0	0	0	0
Other	PGA Participate in STG Activity	3	0	0	1	0	4	3	3	36	24	12	0	6	10	15	42	24	180
Other	PGM Possess STG Material	3	0	2	13	2	11	12	12	20	64	11	9	8	26	13	42	88	324
Strike	SKI INMATE-OPER DISRUP	0	0	0	0	0	0	0	0	0	0	0	0	0	0	0	0	0	0
Strike	SKS STAFF-OPER DISRUP	0	0	0	0	0	0	0	0	0	0	0	0	0	0	0	0	0	0
Suicide	* SUA ATT-SERIOUS INJURY	0	0	1	1	0	0	3	0	0	0	0	0	0	0	0	0	0	5
Suicide	* SUC ATTEMPT	2	0	2	4	2	2	4	4	1	4	2	0	0	1	1	0	2	25
Use of Force	UFC CHEMICAL AGENTS	0	0	0	4	0	6	0	0	0	50	9	3	0	28	51	26	62	239
Use of Force	UFD DEADLY WEAPON	0	0	0	0	0	0	0	0	0	0	0	0	0	0	0	0	0	0
Use of Force	UFE ELEC RESTRAINTS	0	0	3	5	2	0	0	2	2	2	1	0	3	7	5	4	0	34
Use of Force	UFL LESS THAN LETHAL	0	0	0	1	0	0	0	0	1	0	0	0	0	0	0	0	0	2
Use of Force	UFM MEDICAL	0	0	2	10	30	0	0	0	0	0	0	0	0	0	0	3	0	45
Use of Force	UFP PHYSICAL	0	1	8	23	22	4	4	4	19	39	10	6	10	42	27	13	21	249
Weapon	WAB AMMUNITION	1	0	3	0	0	0	0	0	0	0	0	0	0	1	0	1	0	6
Weapon	WAM AMMUNITION-SIGNIF AMT	0	0	0	0	0	0	0	0	0	0	0	0	0	0	0	0	0	0
Weapon	WCF COMMERCIAL FIREARM	0	0	4	0	0	0	0	0	0	0	0	0	0	1	0	0	0	5
Weapon	WCK COMMERCIAL KNIFE	0	0	0	1	0	0	0	0	1	1	1	1	1	2	0	2	1	11
Weapon	WEB EXPLOSIVE	0	0	0	0	0	0	0	0	0	0	0	0	0	0	0	0	0	0
Weapon	WEX EXPLOSIVE-SIGNIF AMT	0	0	0	0	0	0	0	0	0	0	0	0	0	0	0	0	0	0
Weapon	WHF HOMEMADE FIREARM	0	0	0	0	0	0	0	0	0	0	0	0	0	0	0	0	0	0
Weapon	WHK HOMEMADE KNIFE	0	1	0	14	3	1	2	41	95	13	10	7	64	47	145	90	533	
Weapon	WOT OTHER	1	1	5	2	1	1	1	0	1	9	3	0	4	4	2	9	1	44
Weapon	WPC CLUB	0	0	0	0	1	0	0	0	1	0	0	0	0	0	0	1	0	3
Weapon	WRM RAW MATERIALS	0	0	2	14	2	1	0	0	7	2	1	1	1	13	0	25	9	77
Weapon	WTA CLASS A TOOL	0	1	3	1	0	0	0	0	2	0	0	0	0	2	0	0	0	9
Weapon	WTB CLASS B TOOL	0	0	0	1	0	0	0	0	0	0	0	0	0	0	0	0	0	0
Summary																			
TOTAL-VIOLENT			10	27	35	112	115	15	40	90	116	68	15	45	170	145	147	130	1,280
TOTAL - NON-VIOLENT			94	167	319	602	347	334	228	771	918	523	375	323	1,021	625	1,490	759	8,896
TOTAL			104	194	354	714	462	349	268	861	1,034	591	390	368	1,191	770	1,637	889	10,176
Rate per 100 - Violent			2.66	6.70	4.78	15.97	16.14	1.60	3.93	7.50	7.14	3.81	1.54	8.49	6.96	7.39	6.41	8.76	6.68
Rate per 100 - Non-Violent			25.02	41.41	43.59	85.85	48.71	35.60	22.42	64.24	56.47	29.28	38.62	60.97	41.80	31.87	64.97	51.14	46.40
Rate per 100 - Total			27.68	48.11	48.38	101.82	64.86	37.20	26.35	71.74	63.60	33.08	40.16	69.47	48.76	39.26	71.38	59.90	53.07

WWW.STATE.TN.US/CORRECTION

TENNESSEE DEPARTMENT OF CORRECTION
RACHEL JACKSON BUILDING
320 SIXTH AVENUE NORTH
NASHVILLE, TN 37243
615-741-1000

