



FY 2009 Statistical Abstract

Prepared: October 2009

By:

***Tennessee Department of Correction
Policy, Planning, and Research Division***

**The Tennessee Department of Correction
Fiscal Year 2008 – 2009 Statistical Abstract
Coordinated and Published by**

Policy, Planning, and Research Division

**Jesse E. Neely, II, Acting Director
Vanessa L. Langston**

**To request a copy of this report, or other research information,
contact us at**

Telephone: 615-741-1000 ext. 8153

Email: planning.research@tn.gov

Visit the TDOC website: www.tn.us.gov/correction

Pursuant to the State of Tennessee's policy on nondiscrimination, the Department of Correction does not discriminate on the basis of race, gender, religion, color, national or ethnic origin, age, disability, or military service in its policies, or in the admission of or access to, or treatment or employment in, its programs, services, or activities.

Equal Employment Opportunity/Affirmative Action inquiries or complaints should be directed to the Department of Correction, EEO/AA Coordinator, Human Resources Office, 3rd Floor Rachel Jackson Building, 320 Sixth Avenue North, Nashville, TN 37243-0465, Telephone 615-741-1000 ext. 8026 or TDD (for persons with hearing impairments), 615-532-4423.

ADA inquiries or complaints should be directed to the Department of Correction, Human Resources Office, 3rd Floor Rachel Jackson Building, 320 Sixth Avenue North, Nashville, TN 37243-0465, Telephone 615-741-1000 ext. 1508 or TDD (for persons with hearing impairments), 615-532-4423.

TABLE OF CONTENTS

BUDGET & STAFFING	7
Personnel by Race and Sex	9
Personnel by Class	9
Correctional Officer Series Vacancy Rates	10
Correctional Officer Series	11
Authorized Full Time Equivalents (FTE'S)	11
Facility Staffing vs. Inmate Average Daily Population	12
Salary Comparisons	13
Correctional Officer Turnover Rate	14
Budget Recommendations by Function of Government	15
POPULATION, CAPACITY & TRENDS	17
State Incarceration Rates	19
Institutional Capacity & Population Distribution	20
Total Felon Population (Historical and Projected)	21
Unmet Bed Demand by Gender	21
Total Felon Population	22
Year-End Inmate Population Trends	22
Fiscal Year-End Incarcerated Felon Population	23
Felony Inmate Population by Age	24
Felony Inmate Population by Gender and Race	25
Felony Inmate Population by Gender, Race, and Location	25
Local Jail Census	26
Average Sentence Length by Primary Offense (Stock Population Detail)	27
Average Sentence Length by Primary Offense (Admissions)	28
Average Time Served by Primary Offense (Releases by Location)	29
Average Time Served by Primary Offense (Releases by Type)	30
Yearly Admissions and Releases	31
Felony Admissions by Type	31
Felony Releases by Type	31
Felony Admissions by Age, Race, and Gender	32
Felony Releases by Age, Race, and Gender	32
Admissions by Geographical Region	33
Admissions by County of Conviction	34
Felon Population by County of Conviction	35
OFFENDER ACCOUNTABILITY, PROGRAMS & SERVICES	37
Total Hours and Estimated Value of Community Service Work	39
Community Service Hours Worked by Facility	39
Inmate Assignments	40
Drug Screens - Positive Drug Tests by Percentage	41
Educational Enrollment	42
Education Test Results	42
GED & Vocational Certificates	42
Hospital Inpatient Cost Comparison	43
Number of Hospital Admissions	43
Pharmacy Costs	44
Mental Health Encounters for Female Offenders	44
INSTITUTIONS (DEMOGRAPHICS)	45
Facilities and Security Designations	47
Average Daily Population	48
Demographics by Facility	48
Facility Populations by Primary Offense	49
Incident Summary	50

Budget & Staffing

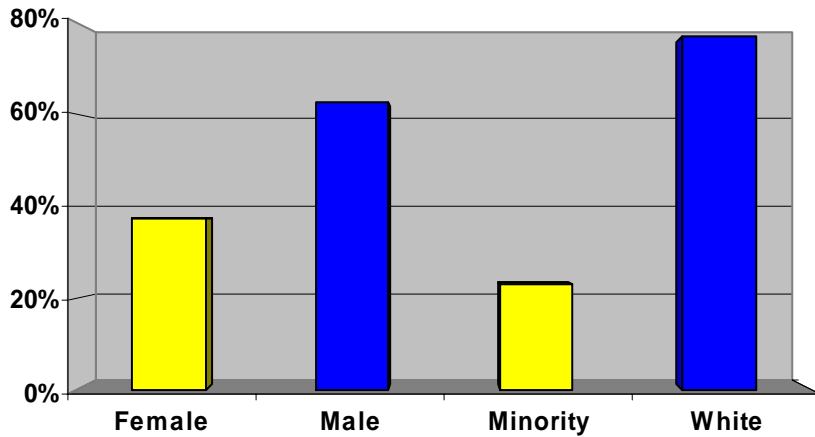


The Central Office Human Resources section provides technical assistance and advice and ensures compliance with Civil Service Rules, EEOC/Affirmative Action, state law, and policies. This section also implements and monitors personnel-related programs such as employee relations, recruitment and retention, training, performance evaluations, employee transactions, and employee benefits, including accommodations under the Americans with Disabilities Act.

**Personnel by Race and Sex
June 30, 2009**

	Male	Female	Total
White	2,600	1,280	3,880
Minority	555	612	1,167
Total	3,155	1,892	5,047

TDOC PERSONNEL



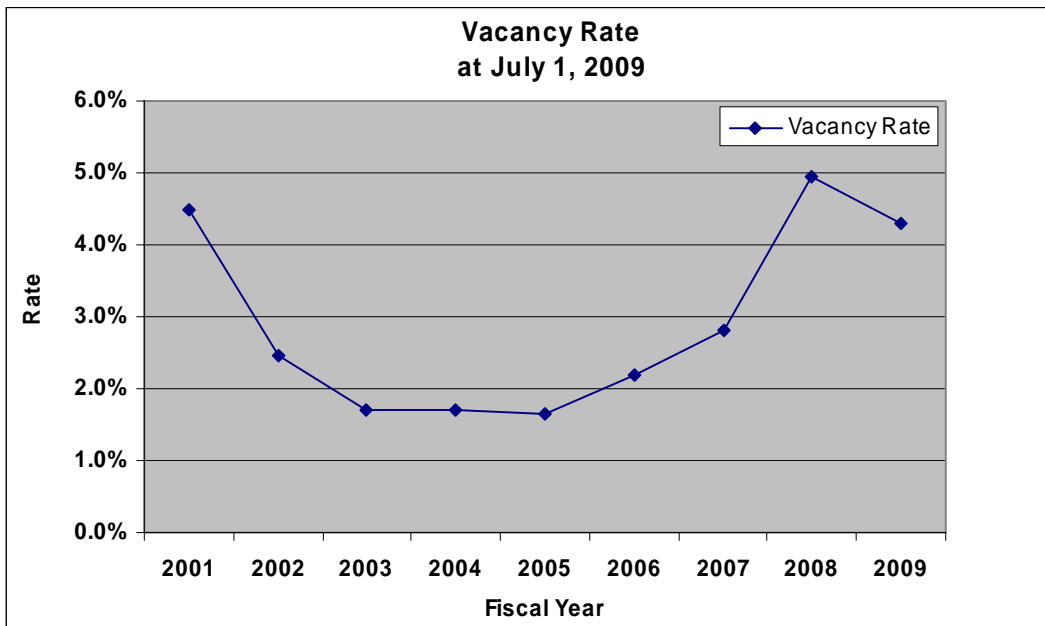
**Personnel by Class
June 30, 2009**

Personnel Type	FY08-09	FY07-08	FY06-07	FY05-06	FY04-05	FY03-04	FY02-03	FY01-02
Officials/ Administrators	2.1%	2.3%	2.2%	2.0%	2.0%	1.8%	1.8%	1.8%
Security	65.3%	64.0%	64.3%	64.4%	64.9%	62.0%	60.1%	62.6%
Maintenance	4.4%	4.3%	4.3%	4.4%	4.3%	1.2%	0.6%	1.2%
Professional	16.1%	16.5%	16.3%	16.1%	15.8%	14.4%	15.2%	13.9%
Skilled	2.0%	2.1%	2.1%	2.1%	2.1%	3.5%	3.5%	3.4%
Clerical	6.8%	7.4%	7.4%	7.5%	7.8%	6.1%	6.1%	6.6%
Technical	3.4%	3.4%	3.4%	3.5%	3.0%	6.3%	6.7%	7.1%
Para-Professional	0.0%	0.0%	0.0%	n/a	0.1%	4.8%	5.9%	5.2%

VACANCIES IN UNIFORMED STAFF

Correctional Officer Series Vacancy Rates from 2009

As of:	Vacant Positions	Total Positions	Vacancy Rate
7/1/2009	143	3,360	4.3%
7/1/2008	173	3,491	5.0%
7/1/2007	94	3,356	2.8%
7/1/2006	73	3,340	2.2%
7/1/2005	55	3,335	1.7%
7/1/2004	56	3,318	1.7%
7/1/2003	57	3,326	1.7%
7/1/2002	85	3,322	2.5%
7/1/2001	144	3,221	4.5%



Correctional officer vacancy rates declined steadily from a high of 4.5% in fiscal year (FY) 2001 to a nine year low of 1.7% in FY 2003. The rate remained steady throughout FY 2005, peaked at 5.0% in FY 2008, and took a downward turn to the FY 2009 rate of 4.3%.

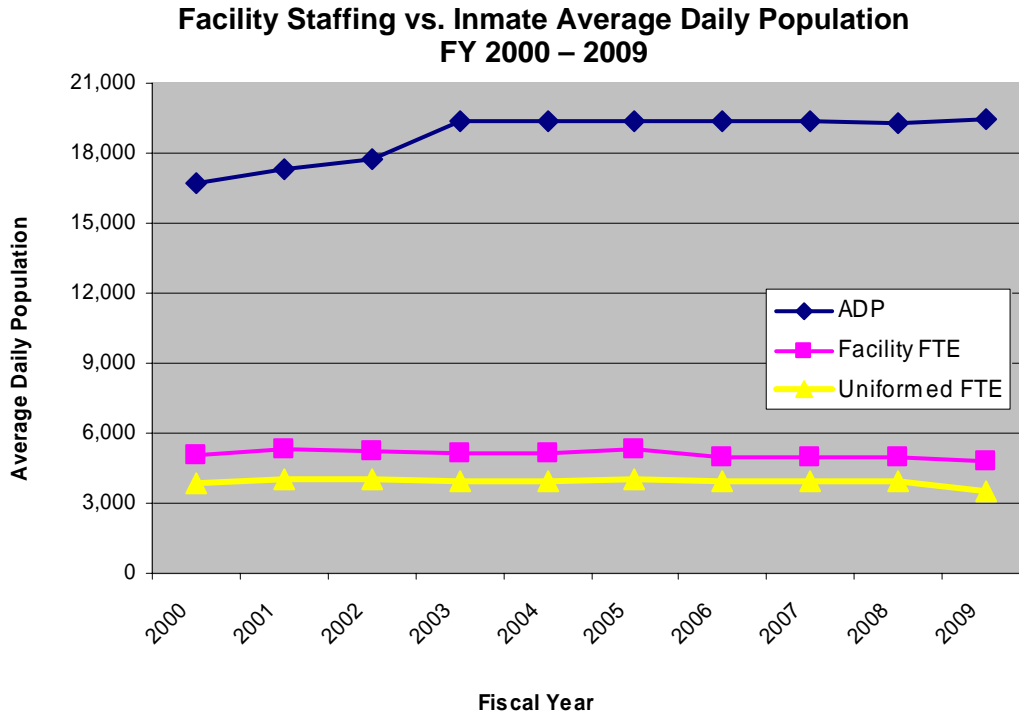
**Correctional Officer Series
June 30, 2009**

Positions	Correctional Officer	Correctional Clerical Officer	Corporal	Sergeant	Lieutenant	Captain	TOTAL
Total	2,466	132	441	183	77	61	3,360
Filled	2,399	129	391	175	68	55	3,217

AUTHORIZED FULLTIME EQUIVALENTS (FTE'S) in FY 2008 - 2009			
Facility	Uniformed	Non-Uniformed	Total
Brushy Mountain Correctional Complex (includes Morgan County Correctional Complex)	512	147	659
Charles Bass Correctional Complex	299	62	361
DeBerry Special Needs Facility	229	190	419
Mark Luttrell Correctional Complex	124	50	174
Northeast Correctional Complex	378	131	509
Northwest Correctional Complex	468	169	637
Riverbend Maximum Security Institution	253	53	306
Southeastern Tennessee State Regional Facility	222	82	304
Tennessee Correction Academy	23	48	71
Tennessee Prison for Women	175	56	231
Turney Center Industrial Complex	316	98	414
West Tennessee State Penitentiary	521	162	683
Facility Subtotal	3520	1248	4768
Central Office	5	190	195
Total	3525	1438	4963

- 96% of the total authorized positions for TDOC are in correctional facilities.
- 71% of the total system-wide FTE's are in uniformed security

STAFFING TRENDS



Correctional facility staffing trends are presented in the graph above, which include data on total facility staffing (expressed in FTE's or full time equivalents) and uniformed security staffing levels as compared to the average daily inmate population.

Between FY 2000 and FY 2009:

- Inmate average daily population increased by 16.3%
- Total facility staffing decreased by 5.6%
- Total uniformed security staffing decreased by 8.5%

SALARY COMPARISONS

The ability to recruit and retain qualified staff continues to be a concern for the Department. Because salary levels are critical in recruitment and retention of staff, the Department closely monitors other correctional and law enforcement agencies to compare its salaries with those offered by agencies performing similar functions.

State DOC	Average Starting Salary
Alabama	\$27,552
North Carolina	\$27,309
Arkansas	\$26,922
Missouri	\$26,784
Virginia	\$25,228
Tennessee	\$24,456
Georgia	\$24,322
Kentucky	\$23,346
Mississippi	\$22,006

When compared to other neighboring state correctional departments, TDOC ranks 6th in the average starting salary for correctional officers.

Source: Southern Legislative Conference, July 2008.

Federal Bureau of Prisons	\$36,570
Shelby County Sheriff's Office	\$34,181
Hamilton County Sheriff's Office	\$30,544
Davidson County Sheriff's Office	\$30,349
Knox County Sheriff's Office	\$27,424

TDOC also ranks low when compared to other correctional and law enforcement agencies located near some of our facilities. These are some of the agencies with whom we compete directly in the recruitment and retention of uniformed staff.

CORRECTIONAL OFFICER TURNOVER

TDOC Correctional Officer Turnover Rates: FY 2008-2009

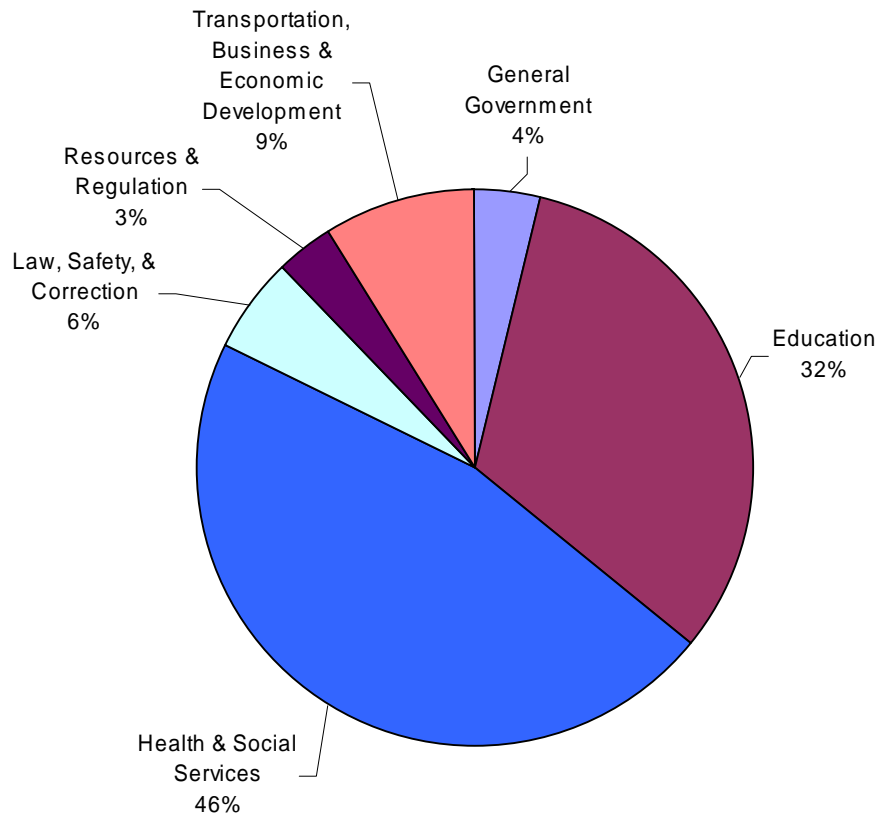
Institution		Correctional Officer Turnover Rate
Brushy Mountain Correctional Complex*	BMCX	23.0%
Charles Bass Correctional Complex	CBCX	45.8%
DeBerry Special Needs Facility	DSNF	33.8%
Mark Luttrell Correctional Facility	MLCC	34.5%
Morgan County Correctional Complex	MCCX	19.0%
Northeast Correctional Complex	NECX	15.6%
Northwest Correctional Complex	NWCX	28.6%
Riverbend Maximum Security Institution	RMSI	38.8%
Southeastern TN State Regional Facility	STSRCF	17.7%
Tennessee Prison for Women	TPFW	61.6%
Turney Center Industrial Complex	TCIX	22.1%
Wayne County Boot Camp**	WCBC	39.5%
West Tennessee State Penitentiary	WTSP	20.0%
Systemwide		27.9%

*BMCX officially closed on June 11, 2009.

**WCBC was consolidated with Turney Center Industrial Prison (TCIP) to form TCIX in October 2008.

In fiscal year 2008-2009, the correctional officer turnover rate was 27.9% system-wide. This represents a .4% decrease from the prior fiscal year rate of 28.3%. The turnover rate includes all correctional officers leaving positions, except those occurring when an employee is transferred or promoted within the TDOC system and in the correctional officer series.

TDOC IN THE CONTEXT OF THE STATE BUDGET



The Governor's Budget included \$26.3 billion in recommended funding allocated by "functional area." The Department's total operating budget for FY09 was \$700,520,000.

Population, Capacity, & Trends



**INCARCERATION RATES: TENNESSEE VS. OTHER STATES
(Number incarcerated per 100,000)**

State Incarceration Rates: June 30, 2008

Rank		Rank		Rank				
1	Louisiana	858	18	California	471	35	New York	317
2	Mississippi	749	19	Colorado	468	36	Kansas	308
3	Oklahoma	668	20	Ohio	445	37	New Mexico	307
4	Texas	668	21	Tennessee	434	38	New Jersey	305
5	Alabama	619	22	Indiana	429	39	Iowa	291
6	Arizona	565	23	South Dakota	417	40	Washington	266
7	Florida	548	24	Connecticut	411	41	Massachusetts	252
8	Georgia	542	25	Maryland	402	42	Vermont	250
9	South Carolina	537	26	Wyoming	389	43	Rhode Island	241
10	Missouri	515	27	Wisconsin	386	44	Nebraska	238
11	Arkansas	507	28	Oregon	370	45	Utah	232
12	Michigan	505	29	Pennsylvania	368	46	North Dakota	226
13	Virginia	505	30	Montana	368	47	New Hampshire	213
14	Nevada	497	31	North Carolina	366	48	Minnesota	191
15	Kentucky	488	32	Alaska	357	49	Maine	133
16	Idaho	482	33	West Virginia	334	50	Illinois*	N/A
17	Delaware	473	34	Hawaii	332		All States	405

Source: *Prison Inmates at Midyear 2008, Bureau of Justice Statistics.*

Note: *The following jurisdictions have integrated prison & jail systems: Delaware, Vermont, Connecticut, Alaska, Hawaii, and Rhode Island.*

**Illinois did not provide data.*

The most recent statistics released in March 2009, indicate that Tennessee has the 21st highest incarceration rate in the country. The incarceration rate in Tennessee increased from 430 in June 2007 to 434 in June 2008.

TDOC INSTITUTIONAL CAPACITY & POPULATION DISTRIBUTION

INSTITUTION	Total Beds Available	TDOC Operating Capacity	Assigned Count as of 6/30/2009	Population as a Percent of	
				Available Beds	Operating Capacity
GENERAL PURPOSE FACILITIES					
Hardeman County Correctional Center (HCCF)	2,016	1,976	1,977	98.1%	100.1%
Mark Luttrell Correctional Center (MLCC)	440	436	416	94.5%	95.4%
Northeast Correctional Complex (NECX)	1,856	1,819	1,798	96.9%	98.8%
Northwest Correctional Complex (NWCX)	2,425	2,377	2,337	96.4%	98.3%
South Central Correctional Facility (SCCF)	1,676	1,642	1,648	98.3%	100.4%
Southeastern TN State Regional Corr. Facility (STSRC)	981	971	936	95.4%	96.4%
Turney Center Industrial Complex (TCIX)	1,572	1,541	1,525	97.0%	99.0%
Whiteville Correctional Facility (WCFA)	1,536	1,505	1,515	98.6%	100.7%
SUB-TOTAL	12,502	12,267	12,152	97.2%	99.1%
CLASSIFICATION FACILITIES					
Charles Bass Correctional Complex (CBCX)	1,110	1,099	1,059	95.4%	96.4%
Tennessee Prison for Women (TPW)	775	744	753	97.2%	101.2%
SUB-TOTAL	1,885	1,843	1,812	96.1%	98.3%
SPECIAL PURPOSE FACILITIES					
DeBerry Special Needs Facility (DSNF)	800	736	718	89.8%	97.6%
SUB-TOTAL	800	736	718	89.8%	97.6%
HIGH SECURITY FACILITIES					
Morgan County Correctional Complex (MCCX)**	2,441	2,417	1,569	64.3%	64.9%
Riverbend Maximum Security Institution (RMSI)	736	714	705	95.8%	98.7%
West Tennessee State Penitentiary (WTSP)**	2,582	2,505	2,506	97.1%	100.0%
SUB-TOTAL	5,759	5,636	4,780	83.0%	84.8%
TOTALS	20,946	20,482	19,462	92.9%	95.0%

Source: TDOC Population Overview Report.

BMCX served as a classification facility for East Tennessee during FY 09. It was officially closed on June 11, 2009.

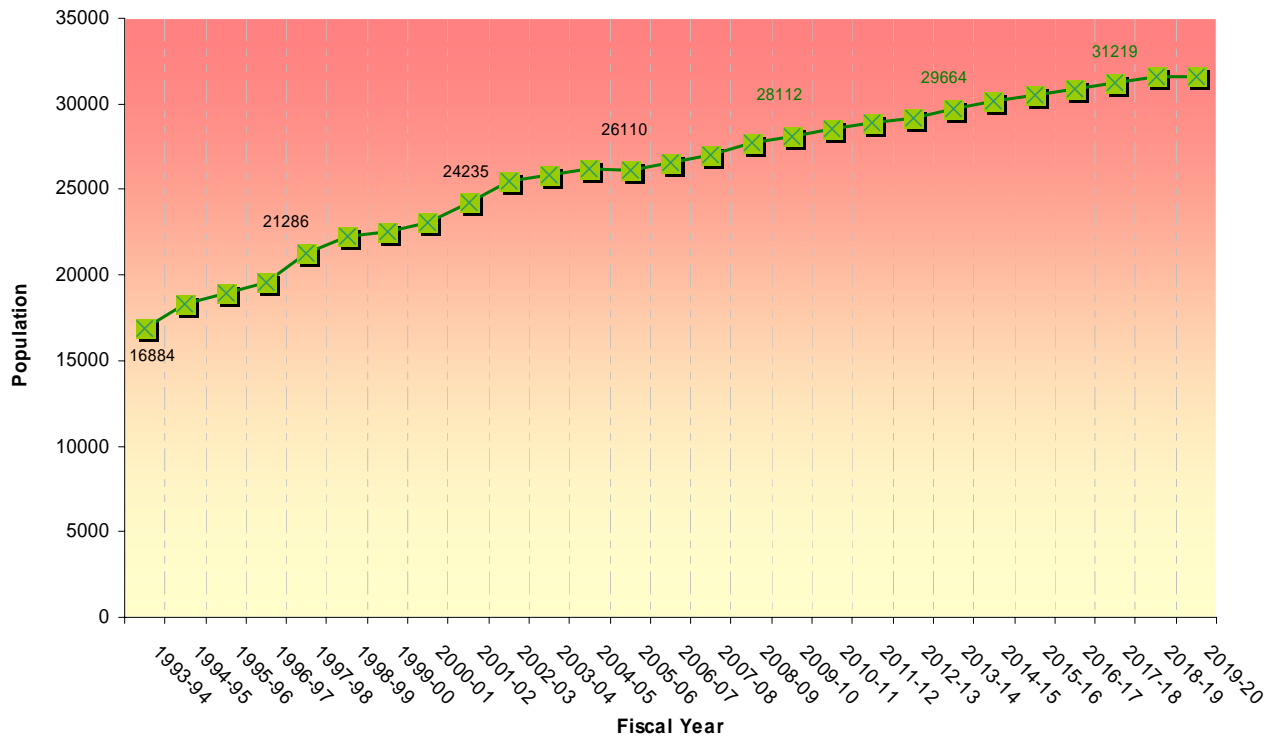
** MCCX now serves as a classification facility to East Tennessee.

** WTSP also serves as a classification facility to West Tennessee.

OPERATING CAPACITY VS. INMATE POPULATION PROJECTIONS

Fiscal Year End June 30th	Operating Capacity	Projected Population	Unmet Bed Demand
2009	26,181	27,773	1,592
2010	26,806	28,112	1,306
2011	25,301	28,511	3,210
2012	25,446	28,933	3,487
2013	26,876	29,203	2,327
2014	26,876	29,664	2,788
2015	26,876	30,141	3,265
2016	26,876	30,511	3,635
2017	26,876	30,859	3,983
2018	26,876	31,219	4,343
2019	26,876	31,575	4,699
2020	26,876	31,552	4,676

Total Felon Population (Historical and Projected), 1994-2020



UNMET BED DEMAND BY GENDER

Fiscal Year End	Operating Capacity		Projected Population		Unmet Bed Demand		
	June 30th	Males	Females	Males	Females	Male	Females
2009		24,248	1,933	25,553	2,220	1,305	287
2010		24,873	1,933	25,771	2,341	898	408
2011		23,368	1,933	26,092	2,419	2,724	486
2012		23,513	1,933	26,509	2,424	2,996	491
2013		24,943	1,933	26,767	2,436	1,824	503
2014		24,943	1,933	27,230	2,434	2,287	501
2015		24,943	1,933	27,711	2,430	2,768	497
2016		24,943	1,933	28,078	2,433	3,135	500
2017		24,943	1,933	28,413	2,446	3,470	513
2018		24,943	1,933	28,743	2,476	3,800	543
2019		24,943	1,933	29,028	2,547	4,085	614
2020		24,943	1,933	28,974	2,578	4,031	645

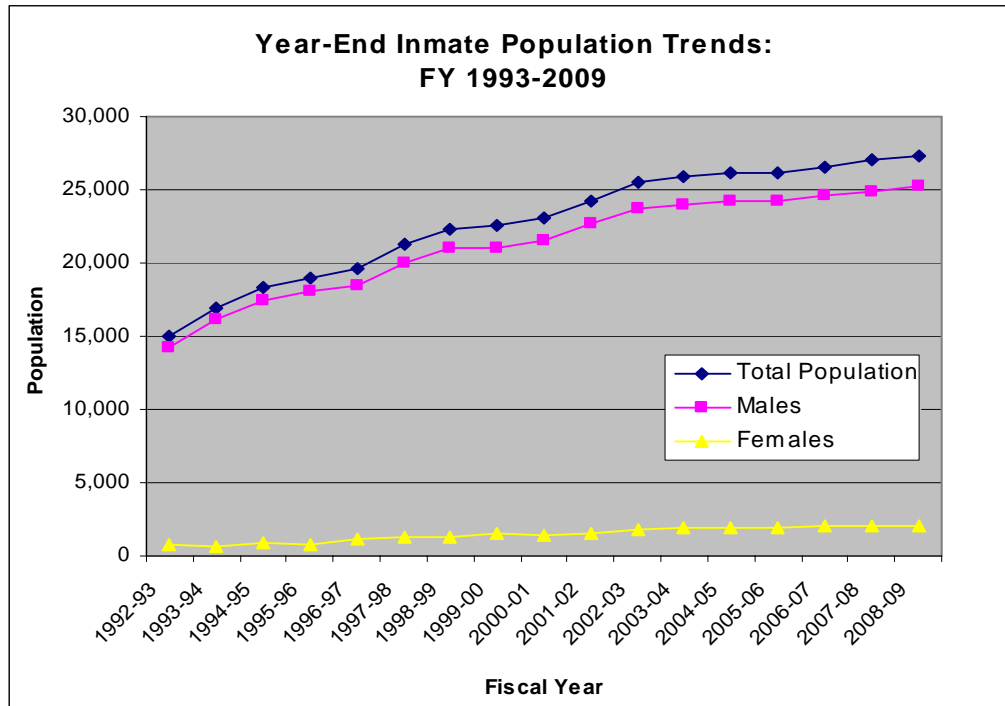
FELON POPULATION TRENDS

The felon population data included in this annual report is from the Tennessee Offender Management Information System (TOMIS) unless otherwise stated. Data from other sources may vary from TOMIS due to the time delay in the TOMIS data entry process. In some cases information is not received until several months after sentencing, admissions, release, etc. The data on this page and page 21 are from TDOC monthly population reports.

Total Felon Population: June 30, 2009

County/Local Jails	
Locally Sentenced	5,398
TDOC Backup	2,465
TDOC Prisons	
	19,462
Community Supervision	
Parole	11,139
Probation	48,924
Community Corrections	6,925
TOTAL	94,313

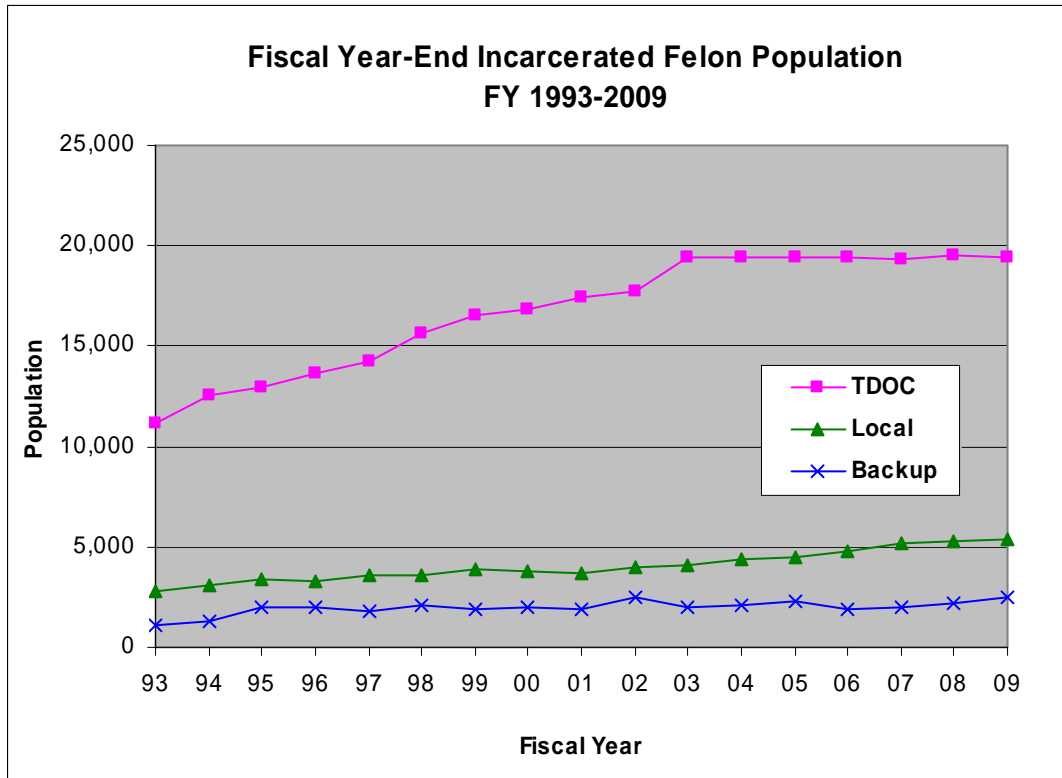
Fiscal Year-End Inmate Population Trends



Over the past 17 fiscal years (1993-2009), the incarcerated felon population (including TDOC backup and locally sentenced felons) has increased 81.7% (from 15,038 to 27,325). The male and female felon population increased 77.0% and 165.0% respectively during this same period.

During the past fiscal year, the total incarcerated felon population increased from 26,998 in July 2008 to 27,325 in June 2009, an increase of 1.2%. The male felon population increased 1.3% and the female felon population increased .1% during FY 2009.

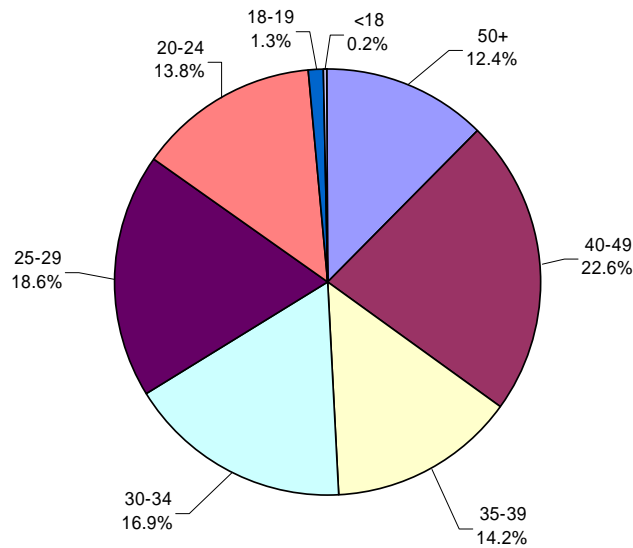
Annual Fiscal Year-End Incarcerated Felon Population: FY 1993-2009



Since 1993, the TDOC in-house population has increased 75.2% (from 11,106 to 19,462). TDOC backup was 119.5% higher in June 2009 than in June 1993 (from 1,123 to 2,465); locally sentenced felons have increased 92.2% during this same period (from 2,809 to 5,398).

FELONY INMATE DEMOGRAPHICS: AGE, GENDER, RACE

Felony Inmate Population by Age
(Systemwide)
June 30, 2009

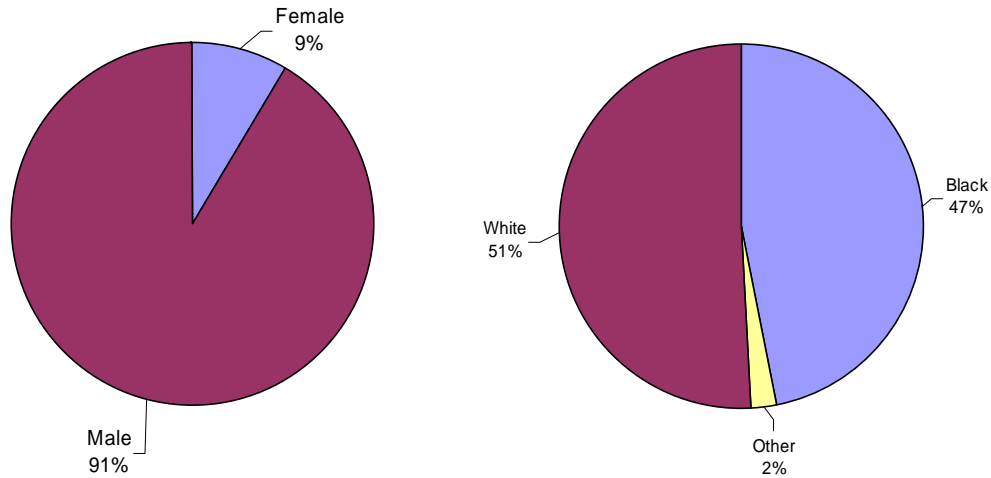


Felony Inmate Population by Age: June 30, 2009

	TDOC INHOUSE	%	TDOC BACKUP	%	LOCAL FELON	%	SYSTEM- WIDE	%
50+	2,805	14.5%	316	6.8%	273	8.0%	3,394	12.4%
40-49	4,608	23.8%	936	20.2%	650	19.0%	6,194	22.6%
35-39	2,851	14.7%	663	14.3%	392	11.4%	3,906	14.2%
30-34	3,344	17.3%	752	16.2%	534	15.6%	4,630	16.9%
25-29	3,377	17.4%	1020	22.0%	713	20.8%	5,110	18.6%
20-24	2,185	11.3%	845	18.2%	758	22.1%	3,788	13.8%
18-19	161	0.8%	96	2.1%	89	2.6%	346	1.3%
<18	23	0.1%	7	0.2%	16	0.5%	46	0.2%
TOTAL	19,354	100%	4,635	100%	3,425	100%	27,414	100%

Source: Tennessee Offender Management Information System

**Felony Inmate Population by Gender and Race
(Systemwide)
June 30, 2009**



**Female Inmate Population by Gender Race, and Location
June 30, 2009**

	TDOC	%	Backup	%	Local	%	System-Wide
Male							
Black	8,412	46.3%	1,681	43.8%	2,102	69.6%	12,195
White	9,307	51.2%	2,085	54.3%	857	28.4%	12,249
Other	469	2.6%	75	2.0%	62	2.1%	606
Total Male	18,188	100.0%	3,841	100.0%	3,021	100.0%	25,050
Female							
Black	327	28.0%	135	17.0%	184	45.5%	646
White	817	70.1%	652	82.1%	215	53.2%	1684
Other	22	1.9%	7	0.9%	5	1.2%	34
Total Female	1,166	100.0%	794	100.0%	404	100.0%	2,364
TOTAL	19,354	70.6%	4,635	16.9%	3,425	12.5%	27,414

Source: Tennessee Offender Management Information System

LOCAL JAIL CENSUS

Local Jail Census: FY 2008 - 2009

	JULY	AUG	SEPT	OCT	NOV	DEC	JAN	FEB	MAR	APR	MAY	JUNE
Total Jail Population	26,310	26,913	26,779	26,536	26,219	24,778	26,214	26,119	26,441	26,265	26,898	26,772
TDOC Backup	2,239	2,274	2,446	2,483	2,669	2,577	2,705	2,647	2,606	2,448	2,550	2,465
Local Felons	5,435	5,503	5,565	5,531	5,469	5,283	5,272	5,488	5,428	5,466	5,438	5,398
Other Convicted Felons	509	526	526	779	776	708	752	742	760	717	724	813
Convicted	5,061	5,331	5,109	5,124	4,753	4,229	5,092	5,295	5,203	5,274	5,636	5,341
Others	982	947	931	1040	1016	955	1021	999	1016	942	923	916
Pre-trial Detainees												
Felony	8,463	8,451	8,452	8,319	7,968	7,748	7,944	7,602	7,905	7,893	7,953	8,267
Misdemeanant	3,621	3,881	3,750	3,260	3,568	3,278	3,428	3,346	3,523	3,525	3,674	3,572
Percentage of Jail Population												
TDOC Backup	8.5%	8.4%	9.1%	9.4%	10.2%	10.4%	10.3%	10.1%	9.9%	9.3%	9.5%	9.2%
Local Felons	20.7%	20.4%	20.8%	20.8%	20.9%	21.3%	20.1%	21.0%	20.5%	20.8%	20.2%	20.2%
Other Convicted Felons	1.9%	2.0%	2.0%	2.9%	3.0%	2.9%	2.9%	2.8%	2.9%	2.7%	2.7%	3.0%
Convicted	19.2%	19.8%	19.1%	19.3%	18.1%	17.1%	19.4%	20.3%	19.7%	20.1%	21.0%	19.9%
Others	3.7%	3.5%	3.5%	3.9%	3.9%	3.9%	3.9%	3.8%	3.8%	3.6%	3.4%	3.4%
Pre-trial Detainees												
Felony	32.2%	31.4%	31.6%	31.3%	30.4%	31.3%	30.3%	29.1%	29.9%	30.1%	29.6%	30.9%
Misdemeanant	13.8%	14.4%	14.0%	12.3%	13.6%	13.2%	13.1%	12.8%	13.3%	13.4%	13.7%	13.3%

Source: TDOC Jail Summary Report as of June 30, 2009

Average Sentence Lengths by Primary Offense Admissions

Average Sentence Length by Primary Offense Group: FY 2008-2009
Felony Admissions

PRIMARY OFFENSE GROUP	TDOC SENTENCED		LOCALLY SENTENCED		SYSTEMWIDE			
	Number of Offenders	% Of TDOC Total	Number of Offenders	% Of Local Total	System-wide Total	% Of System Total	Average Sentence (YY/MM)	
PERSON	Homicide							
	Murder	297	2.68%	19	0.53%	316	2.16%	22/05
	Negligent Manslaughter	13	0.12%	12	0.34%	25	0.17%	03/09
	Kidnapping	53	0.48%	12	0.34%	65	0.44%	12/01
	Sex Offenses							
	Forcible	334	3.01%	51	1.43%	385	2.63%	11/09
	Non-Forcible	113	1.02%	22	0.62%	135	0.92%	03/00
	Assault							
	Aggravated Assault	979	8.83%	424	11.86%	1,403	9.57%	06/10
	Simple Assault	117	1.08%	66	1.85%	183	1.25%	02/05
PROPERTY	Arson	56	0.51%	9	0.25%	65	0.44%	08/06
	Burglary	1,605	14.48%	603	16.86%	2,208	15.06%	04/11
	Forgery/Fraud	687	6.20%	200	5.59%	887	6.05%	03/07
	Larceny/Theft	1,165	10.51%	534	14.93%	1,699	11.59%	03/09
	Robbery							
	Aggravated Robbery	820	7.40%	61	1.71%	881	6.01%	12/02
	All Other Robbery	360	3.25%	116	3.24%	476	3.25%	06/04
	Drug Offenses							
	Cocaine	1,526	13.76%	418	11.69%	1,944	13.26%	08/00
	Other Drug Offenses	1,383	12.47%	382	10.68%	1,765	12.04%	05/02
SOCIAL	Vehicular							
	Vehicular Homicide/DUI	49	0.44%	5	0.14%	54	0.37%	10/07
All Other Vehicular	166	1.50%	52	1.45%	218	1.49%	02/04	
OTHER	C/S/F Person*	67	0.60%	14	0.39%	81	0.56%	13/02
	C/S/F Property*	92	0.83%	62	1.73%	154	1.05%	04/06
	C/S/F Societal/Drugs*	121	1.09%	87	2.43%	208	1.42%	04/04
	Escape	8	0.07%	4	0.11%	12	0.08%	03/03
	All Other	1076	9.71%	423	11.83%	1,499	10.22%	02/11
	Unknown*	0	0.00%	0	0.00%	0	0.00%	N/A
	TOTAL	11,087	100%	3,576	100%	14,663	100%	06/01
Sentence Type	Death	1	0.01%	0	0.00%	1	0.01%	N/A
	Life	112	1.01%	0	0.00%	112	0.76%	N/A
	85%	379	3.42%	0	0.00%	379	2.58%	19/02
	1-2 Years	2,353	21.22%	1,609	44.99%	3,962	27.02%	01/09

* C/S/F refers to non-substantive offenses such as conspiracy, solicitation, facilitation, aiding, and abetting, etc.

** 113 offenders with sentences of life (112), life and death (1) are included in the TDOC counts, but are not included in the calculation of average sentence lengths. Above count does not include 229 unprocessed judgement orders. Total Admissions are 14,892.

Average Time Served by Primary Offense Releases by Location

Average Time Served by Location: FY 2008 - 2009 Felony Releases													
Primary Offense Category	TDOC INHOUSE			TDOC BACKUP			LOCALLY SENTENCED			SYSTEMWIDE			
	Number of Offenders	%	Average Time Served (YY/MM)	Number of Offenders	%	Average Time Served (YY/MM)	Number of Offenders	%	Average Time Served (YY/MM)	Number of Offenders	%	Average Time Served (YY/MM)	
PERSON	Homicide												
	Murder	228	3.67%	17/10	24	0.49%	07/01	21	0.49%	02/06	273	1.77%	15/09
	Negligent Manslaughter	6	0.10%	03/03	6	0.12%	02/02	17	0.40%	01/06	29	0.19%	02/00
	Kidnapping	37	0.59%	08/10	15	0.31%	04/08	12	0.28%	02/09	64	0.41%	06/10
	Sex Offenses												
	Forcible	276	4.44%	09/05	54	1.10%	04/00	60	1.40%	02/06	390	2.53%	07/08
	Non-Forcible	26	0.42%	04/02	68	1.39%	01/08	22	0.51%	01/01	116	0.75%	02/02
	Assault												
	Aggravated Assault	657	10.56%	06/02	332	6.76%	03/01	439	10.21%	02/05	1,428	9.25%	04/04
	Simple Assault	44	0.71%	03/00	73	1.49%	02/00	59	1.37%	01/03	176	1.14%	02/01
PROPERTY	Arson	45	0.72%	08/02	20	0.41%	02/06	13	0.30%	01/06	78	0.51%	05/09
	Burglary	959	15.42%	05/07	711	14.48%	02/07	732	17.02%	02/01	2,402	15.57%	03/08
	Forgery/Fraud	256	4.12%	03/06	403	8.21%	02/05	268	6.23%	01/08	927	6.01%	02/06
	Larceny/Theft	546	8.78%	04/04	613	12.49%	02/06	633	14.72%	01/09	1,792	11.61%	02/10
	Robbery												
	Aggravated Robbery	592	9.52%	09/01	247	5.03%	05/07	56	1.30%	02/11	895	5.80%	07/09
	All Other Robbery	261	4.20%	05/00	114	2.32%	03/05	134	3.12%	02/09	509	3.30%	04/01
SOCIAL	Drug Offenses												
	Cocaine Offenses	1,020	16.40%	06/06	598	12.18%	03/06	612	14.23%	02/07	2,230	14.45%	04/08
	Other Drug Offenses	577	9.28%	04/02	746	15.20%	02/07	492	11.44%	02/01	1,815	11.76%	02/11
	Vehicular												
	Vehicular Homicide/DUI	38	0.61%	06/06	10	0.20%	04/03	5	0.12%	01/10	53	0.34%	05/09
OTHER	All Other Vehicular	66	1.06%	02/10	109	2.22%	01/08	64	1.49%	01/07	239	1.55%	02/00
	C/S/F Person	48	0.77%	08/05	9	0.18%	05/00	14	0.33%	01/11	71	0.46%	06/08
	C/S/F Property	42	0.68%	05/03	58	1.18%	02/09	69	1.60%	01/09	169	1.10%	03/00
	C/S/F Societal/Drugs	52	0.84%	05/01	95	1.94%	02/11	108	2.51%	01/09	255	1.65%	02/10
	Escape	14	0.23%	07/05	5	0.10%	03/08	4	0.09%	00/10	23	0.15%	05/04
	All Other	431	6.93%	03/00	599	12.20%	02/00	466	10.84%	01/06	1,496	9.70%	02/02
	Unknown	0	0.00%	N/A	0	0.00%	N/A	0	0.00%	N/A	0	0.00%	N/A
TOTAL	6,221	100.0%	06/03	4,909	100.0%	02/10	4,300	100.0%	02/01	15,430	100.0%	04/00	

Average time served does not include four (4) unprocessed judgement orders. Total releases are 15,434.

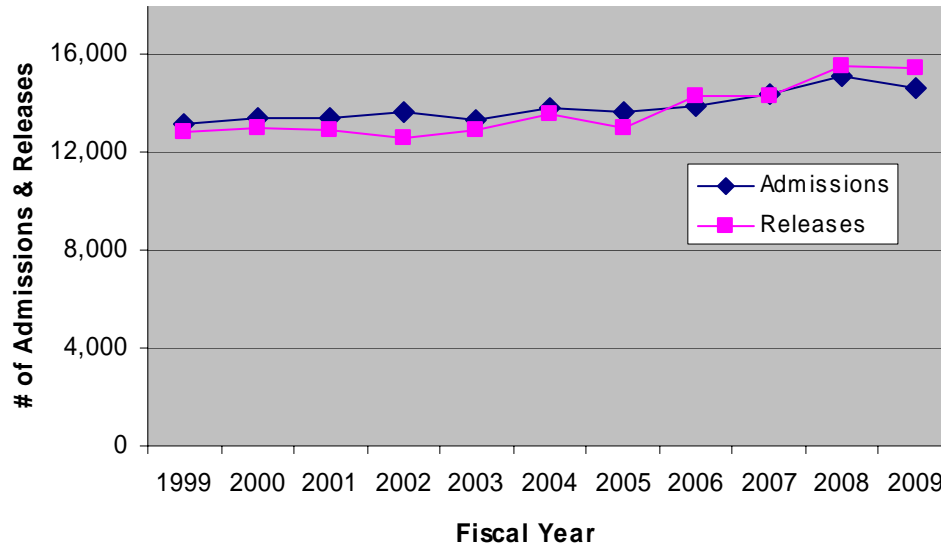
Average Time Served by Primary Offense Releases by Type

Felony Releases Average Time Served by Release Type: FY 2008 - 2009																			
PERSON	PRIMARY OFFENSE GROUP	PAROLE			EXPIRATION			OTHER			PROBATION			COMMUNITY CORRECTIONS			SYSTEM-WIDE		
		Number of Offenders	%	Average Time Served (YY/MM)	Number of Offenders	%	Average Time Served (YY/MM)	Number of Offenders	%	Average Time Served (YY/MM)	Number of Offenders	%	Average Time Served (YY/MM)	Number of Offenders	%	Average Time Served (YY/MM)	Number of Offenders	%	Average Time Served (YY/MM)
PERSON	Homicide	127	2.88%	20/00	115	2.27%	11/03	26	10.32%	16/09	5	0.11%	04/11	0	0.00%	N/A	273	1.77%	15/09
	Murder	3	0.07%	03/05	9	0.18%	03/02	1	0.40%	-	15	0.32%	01/01	1	0.10%	01/01	29	0.19%	02/00
	Negligent Manslaughter	11	0.25%	11/10	37	0.73%	06/06	3	1.19%	04/09	13	0.28%	03/06	0	0.00%	N/A	64	0.41%	06/10
	Sex Offenses	165	3.74%	07/01	129	2.55%	10/08	23	9.13%	08/05	68	1.46%	02/11	5	0.49%	02/04	390	2.53%	07/08
	Forcible	1	0.02%	02/02	44	0.87%	03/01	2	0.79%	02/03	66	1.41%	01/06	3	0.29%	01/07	116	0.75%	02/02
	Non-Forcible	388	8.79%	05/10	622	12.27%	04/08	17	6.75%	04/06	331	7.08%	02/02	70	6.84%	02/04	1,423	9.25%	04/04
	Assault	21	0.48%	02/11	54	1.07%	03/00	3	1.19%	02/01	92	1.97%	01/03	6	0.59%	02/05	176	1.14%	02/01
	Aggravated Assault	17	0.39%	06/08	44	0.87%	06/03	4	1.59%	05/02	13	0.28%	02/04	0	0.00%	N/A	78	0.51%	05/09
	Simple Assault	617	13.96%	05/04	979	19.32%	04/01	22	8.73%	04/07	635	13.59%	01/07	149	14.57%	02/02	2,402	15.57%	03/08
	Arson	177	4.01%	03/06	245	4.83%	03/08	11	4.37%	01/09	434	9.29%	01/07	60	5.87%	01/07	927	6.01%	02/06
PROPERTY	Forgery/Fraud	351	7.95%	04/03	570	11.25%	03/06	26	10.32%	03/02	735	15.73%	01/08	110	10.75%	01/10	1,792	11.61%	02/10
	Larceny/Theft	499	11.30%	07/10	342	6.75%	07/09	13	5.16%	10/10	29	0.62%	05/07	12	1.17%	04/04	895	5.80%	07/09
	Robbery	193	4.37%	04/09	190	3.75%	04/05	5	1.99%	03/00	99	2.12%	02/07	22	2.15%	02/03	509	3.30%	04/01
	Aggravated Robbery	910	20.62%	05/08	539	10.64%	05/09	40	15.87%	03/08	467	9.99%	02/08	274	26.76%	02/04	2,230	14.45%	04/08
	All Other Robbery	502	11.37%	03/10	455	8.99%	03/10	38	15.08%	02/09	640	13.70%	01/09	180	17.60%	02/01	1,815	11.76%	02/11
SOCIAL	Drug Offenses	30	0.68%	06/03	17	0.34%	05/08	1	0.40%	04/02	3	0.06%	02/07	2	0.20%	00/00	53	0.34%	05/09
	Cocaine Offenses	27	0.61%	02/03	76	1.50%	02/08	1	0.40%	00/06	130	2.78%	01/07	5	0.49%	00/07	239	1.55%	02/00
	Other Drug Offenses	34	0.77%	08/01	26	0.51%	08/10	0	0.00%	N/A	8	0.17%	01/08	3	0.29%	02/04	71	0.46%	06/08
	Vehicular	39	0.88%	04/05	61	1.20%	03/04	3	1.19%	01/07	53	1.13%	01/10	13	1.27%	01/10	169	1.10%	03/00
	Vehicular Homicide/DUI	61	1.38%	04/04	70	1.38%	03/08	3	1.19%	00/05	101	2.16%	01/07	20	1.96%	01/11	255	1.65%	02/10
OTHER	All Other Vehicular	7	0.16%	11/00	11	0.22%	04/01	1	0.40%	00/08	4	0.09%	01/07	0	0.00%	N/A	23	0.15%	05/04
	C/SF Person	234	5.30%	02/11	433	8.54%	02/11	9	3.57%	03/06	732	15.66%	01/05	88	8.60%	01/08	1,496	9.70%	02/02
	C/SF Property	0	0.00%	N/A	0	0.00%	N/A	0	0.00%	N/A	0	0.00%	N/A	0	0.00%	N/A	0	0.00%	N/A
	C/SF Societal/Drugs	4,414	100.00%	05/09	5,088	100.00%	04/09	252	100.00%	06/00	4,673	100.00%	01/10	1,023	100.00%	02/01	15,430	100.00%	04/00
TOTAL																			

Average time served does not include four (4) unprocessed judgement orders. Total releases are 15,434.

ADMISSIONS AND RELEASES

**Yearly Admissions and Releases
Fiscal Years 1999-2009**



- Both admissions and releases decreased in FY 2009. Admissions decreased 3.3% and releases decreased by .9%.

Felony Admissions by Type: FY 2008-2009

TYPE	TDOC	%	LOCAL	%	Unknown	%	SYSTEM-WIDE	%
Returned Escape & Others	130	1.2%	18	0.5%	0	0.0%	148	1.0%
Parole, Probation, & Comm.Corr. Violators	4,685	42.3%	1,137	31.8%	86	37.6%	5,908	39.7%
New Commitments	6,272	56.6%	2,421	67.7%	143	62.4%	8,836	59.3%
TOTAL	11,087		3,576		229		14,892	

Total admissions includes 229 unprocessed judgment orders.

Felony Releases by Type: FY 2008-2009

TYPE	TDOC	%	BACK-UP	%	LOCAL	%	UNKNOWN*	%	SYSTEM-WIDE	%
Parole	3,239	52.1%	767	15.6%	408	9.5%	2	66.7%	4,416	28.6%
Probation/Community Corrections	669	10.8%	2,681	54.6%	2,347	54.6%	0	0.0%	5,697	36.9%
Sentence Expiration	2,217	35.6%	1,337	27.2%	1,514	35.2%	0	0.0%	5,068	32.8%
Death	66	1.1%	1	0.0%	1	0.0%	0	0.0%	68	0.4%
Other	30	0.5%	124	2.5%	30	0.7%	1	33.3%	185	1.2%
TOTAL	6,221		4,910		4,300		3		15,434	

Felony Admissions by Age, Race, and Gender: FY 2008 – 2009

AGE	TDOC	%	LOCAL	%	Unknown	%	SYSTEM-WIDE	%
50+	776	7.0%	293	8.2%	24	10.5%	1093	7.3%
40-49	2,201	19.9%	745	20.8%	42	18.3%	2,988	20.1%
35-39	1,538	13.9%	447	12.5%	31	13.5%	2,016	13.5%
30-34	1,751	15.8%	513	14.3%	40	17.5%	2,304	15.5%
25-29	2,339	21.1%	701	19.6%	56	24.5%	3,096	20.8%
20-24	2,106	19.0%	741	20.7%	33	14.4%	2,880	19.3%
18-19	330	3.0%	121	3.4%	3	1.3%	454	3.0%
<18*	46	0.4%	15	0.4%	0	0.0%	61	0.4%
TOTAL	11,087		3,576		229		14,892	

RACE	TDOC	%	LOCAL	%	Unknown	%	SYSTEM-WIDE	%
Black	4,079	36.8%	2,556	71.5%	101	44.1%	6,736	45.2%
White	6,810	61.4%	945	26.4%	126	55.0%	7,881	52.9%
Other	198	1.8%	75	2.1%	2	0.9%	275	1.8%
TOTAL	11,087		3,576		229		14,892	

GENDER	TDOC	%	LOCAL	%	Unknown	%	SYSTEM-WIDE	%
Male	9,547	86.1%	3,153	88.2%	197	86.0%	12,897	86.6%
Female	1,540	13.9%	423	11.8%	32	14.0%	1,995	13.4%
TOTAL	11,087		3,576		229		14,892	

Total admissions includes 229 unprocessed judgment orders.

Felony Releases by Age: FY 2008 – 2009

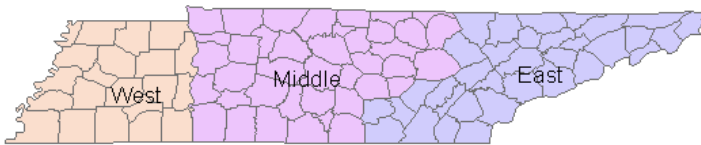
AGE	TDOC	%	BACKUP	%	LOCAL	%	UNKNOWN	%	SYSTEM-WIDE	%
50+	689	11.1%	305	6.2%	341	7.9%	0	0.0%	1,335	8.6%
40-49	1,524	24.5%	1,006	20.5%	940	21.9%	0	0.0%	3,470	22.5%
35-39	1,007	16.2%	676	13.8%	597	13.9%	0	0.0%	2,280	14.8%
30-34	1,120	18.0%	839	17.1%	647	15.0%	0	0.0%	2,606	16.9%
25-29	1,215	19.5%	1,107	22.5%	905	21.0%	0	0.0%	3,227	20.9%
20-24	654	10.5%	909	18.5%	801	18.6%	1	33.3%	2,365	15.3%
18-19	12	0.2%	67	1.4%	61	1.4%	0	0.0%	140	0.9%
<18	0	0.0%	1	0.0%	8	0.2%	2	66.7%	11	0.1%
Unknown	0	0.0%	0	0.0%	0	0.0%	0	0.0%	0	0.0%
TOTAL	6,221		4,910		4,300		3		15,434	

Felony Releases by Race, and Gender: FY 2008 – 2009

RACE	TDOC	%	BACK-UP	%	LOCAL	%	UNKNOWN	%	SYSTEM-WIDE	%
Black	2,496	40.1%	1,613	32.9%	2,832	65.9%	3	100.0%	6,944	45.0%
White	3,612	58.1%	3,225	65.7%	1,391	32.3%	0	0.0%	8,228	53.3%
Other	113	1.8%	72	1.5%	77	1.8%	0	0.0%	262	1.7%
TOTAL	6,221		4,910		4,300		3		15,434	

SEX	TDOC	%	BACK-UP	%	LOCAL	%	UNKNOWN	%	SYSTEM-WIDE	%
Male	5,644	90.7%	3,936	80.2%	3,673	85.4%	3	100.0%	13,256	85.9%
Female	577	9.3%	974	19.8%	627	14.6%	0	0.0%	2,178	14.1%
TOTAL	6,221		4,910		4,300		3		15,434	

Admissions by Geographical Region: FY 2008 - 2009



	TDOC	LOCAL FELON	SYSTEM-WIDE
West	2,384	2,163	4,547
Middle	4,522	1,145	5,667
East	4,181	268	4,449

The system-wide total in the above chart does not include 229 unprocessed judgment orders. Total admissions are 14,892.

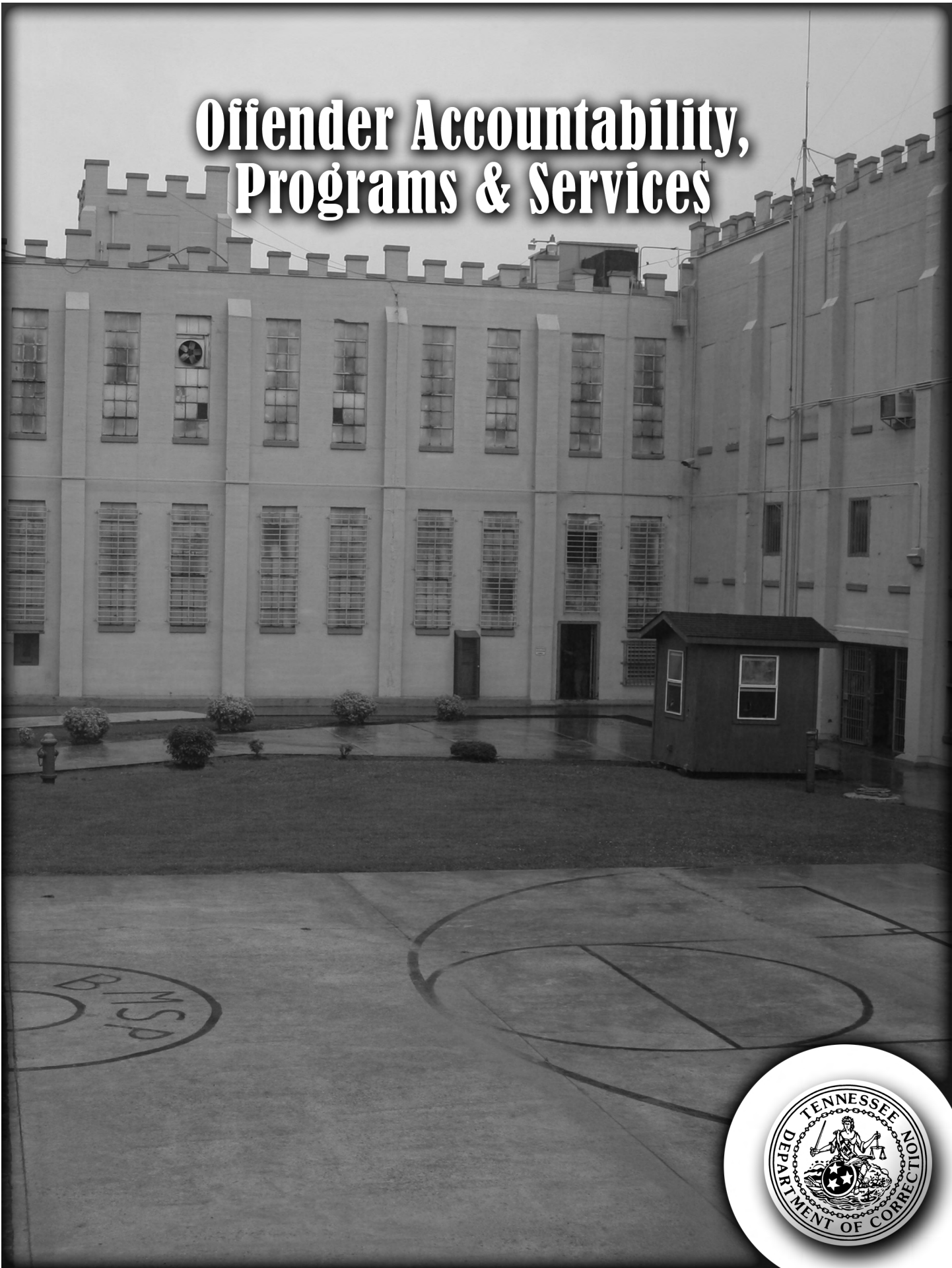
Admissions by County of Conviction: FY 2008-2009

COUNTY	TDOC		LOCAL		SYSTEM-WIDE		COUNTY	TDOC		LOCAL		SYSTEM-WIDE	
	#	%	#	%	#	%		#	%	#	%	#	%
ANDERSON	83	0.7%	1	0.0%	84	0.6%	LAUDERDALE	55	0.5%	0	0.0%	55	0.4%
BEDFORD	155	1.4%	0	0.0%	155	1.0%	LAWRENCE	74	0.7%	1	0.0%	75	0.5%
BENTON	33	0.3%	4	0.1%	37	0.2%	LEWIS	15	0.1%	1	0.0%	16	0.1%
BLEDSE	2	0.0%	0	0.0%	2	0.0%	LINCOLN	63	0.6%	0	0.0%	63	0.4%
BLOUNT	168	1.5%	3	0.1%	171	1.1%	LOUDON	29	0.3%	0	0.0%	29	0.2%
BRADLEY	254	2.3%	1	0.0%	255	1.7%	McMINN	160	1.4%	3	0.1%	163	1.1%
CAMPBELL	96	0.9%	3	0.1%	99	0.7%	McNAIRY	42	0.4%	3	0.1%	45	0.3%
CANNON	39	0.4%	0	0.0%	39	0.3%	MACON	44	0.4%	1	0.0%	45	0.3%
CARROLL	75	0.7%	1	0.0%	76	0.5%	MADISON	347	3.1%	3	0.1%	350	2.4%
CARTER	126	1.1%	2	0.1%	128	0.9%	MARION	31	0.3%	0	0.0%	31	0.2%
CHEATHAM	59	0.5%	1	0.0%	60	0.4%	MARSHALL	82	0.7%	1	0.0%	83	0.6%
CHESTER	43	0.4%	0	0.0%	43	0.3%	MAURY	207	1.9%	2	0.1%	209	1.4%
CLAIBORNE	51	0.5%	0	0.0%	51	0.3%	MEIGS	3	0.0%	0	0.0%	3	0.0%
CLAY	17	0.2%	2	0.1%	19	0.1%	MONROE	107	1.0%	3	0.1%	110	0.7%
COCKE	60	0.5%	3	0.1%	63	0.4%	MONTGOMERY	127	1.1%	4	0.1%	131	0.9%
COFFEE	150	1.4%	7	0.2%	157	1.1%	MOORE	11	0.1%	0	0.0%	11	0.1%
CROCKETT	20	0.2%	0	0.0%	20	0.1%	MORGAN	9	0.1%	0	0.0%	9	0.1%
CUMBERLAND	69	0.6%	0	0.0%	69	0.5%	OBION	82	0.7%	0	0.0%	82	0.6%
DAVIDSON	1,254	11.3%	1,084	30.3%	2,338	15.7%	OVERTON	52	0.5%	0	0.0%	52	0.3%
DECATUR	23	0.2%	0	0.0%	23	0.2%	PERRY	11	0.1%	0	0.0%	11	0.1%
DEKALB	28	0.3%	0	0.0%	28	0.2%	PICKETT	6	0.1%	0	0.0%	6	0.0%
DICKSON	119	1.1%	4	0.1%	123	0.8%	POLK	47	0.4%	0	0.0%	47	0.3%
DYER	157	1.4%	0	0.0%	157	1.1%	PUTNAM	149	1.3%	2	0.1%	151	1.0%
FAYETTE	73	0.7%	0	0.0%	73	0.5%	RHEA	21	0.2%	0	0.0%	21	0.1%
FENTRESS	48	0.4%	0	0.0%	48	0.3%	ROANE	48	0.4%	0	0.0%	48	0.3%
FRANKLIN	83	0.7%	1	0.0%	84	0.6%	ROBERTSON	102	0.9%	0	0.0%	102	0.7%
GIBSON	84	0.8%	3	0.1%	87	0.6%	RUTHERFORD	478	4.3%	19	0.5%	497	3.3%
GILES	37	0.3%	2	0.1%	39	0.3%	SCOTT	69	0.6%	1	0.0%	70	0.5%
GRAINGER	56	0.5%	0	0.0%	56	0.4%	SEQUATCHIE	15	0.1%	1	0.0%	16	0.1%
GREENE	98	0.9%	67	1.9%	165	1.1%	SEVIER	148	1.3%	5	0.1%	153	1.0%
GRUNDY	16	0.1%	0	0.0%	16	0.1%	SHELBY	856	7.7%	2,143	59.9%	2,999	20.1%
HAMBLÉN	126	1.1%	124	3.5%	250	1.7%	SMITH	22	0.2%	0	0.0%	22	0.1%
HAMILTON	331	3.0%	8	0.2%	339	2.3%	STEWART	9	0.1%	0	0.0%	9	0.1%
HANCOCK	14	0.1%	24	0.7%	38	0.3%	SULLIVAN	603	5.4%	3	0.1%	606	4.1%
HARDEMAN	62	0.6%	1	0.0%	63	0.4%	SUMNER	305	2.8%	3	0.1%	308	2.1%
HARDIN	63	0.6%	0	0.0%	63	0.4%	TIPTON	105	0.9%	1	0.0%	106	0.7%
HAWKINS	139	1.3%	1	0.0%	140	0.9%	TROUSDALE	29	0.3%	0	0.0%	29	0.2%
HAYWOOD	36	0.3%	0	0.0%	36	0.2%	UNICOI	32	0.3%	1	0.0%	33	0.2%
HENDERSON	58	0.5%	0	0.0%	58	0.4%	UNION	43	0.4%	3	0.1%	46	0.3%
HENRY	100	0.9%	3	0.1%	103	0.7%	VAN BUREN	9	0.1%	0	0.0%	9	0.1%
HICKMAN	58	0.5%	2	0.1%	60	0.4%	WARREN	105	0.9%	3	0.1%	108	0.7%
HOUSTON	6	0.1%	0	0.0%	6	0.0%	WASHINGTON	249	2.2%	5	0.1%	254	1.7%
HUMPHREYS	39	0.4%	0	0.0%	39	0.3%	WAYNE	60	0.5%	1	0.0%	61	0.4%
JACKSON	17	0.2%	0	0.0%	17	0.1%	WEAKLEY	49	0.4%	0	0.0%	49	0.3%
JEFFERSON	112	1.0%	3	0.1%	115	0.8%	WHITE	30	0.3%	0	0.0%	30	0.2%
JOHNSON	26	0.2%	1	0.0%	27	0.2%	WILLIAMSON	185	1.7%	3	0.1%	188	1.3%
KNOX	809	7.3%	2	0.1%	811	5.4%	WILSON	169	1.5%	1	0.0%	170	1.1%
LAKE	21	0.2%	1	0.0%	22	0.1%	Unknown					229	2%
TOTAL								11,087	100%	3,576	100%	14,892	100%

Felon Population by County of Conviction: FY 2008-2009

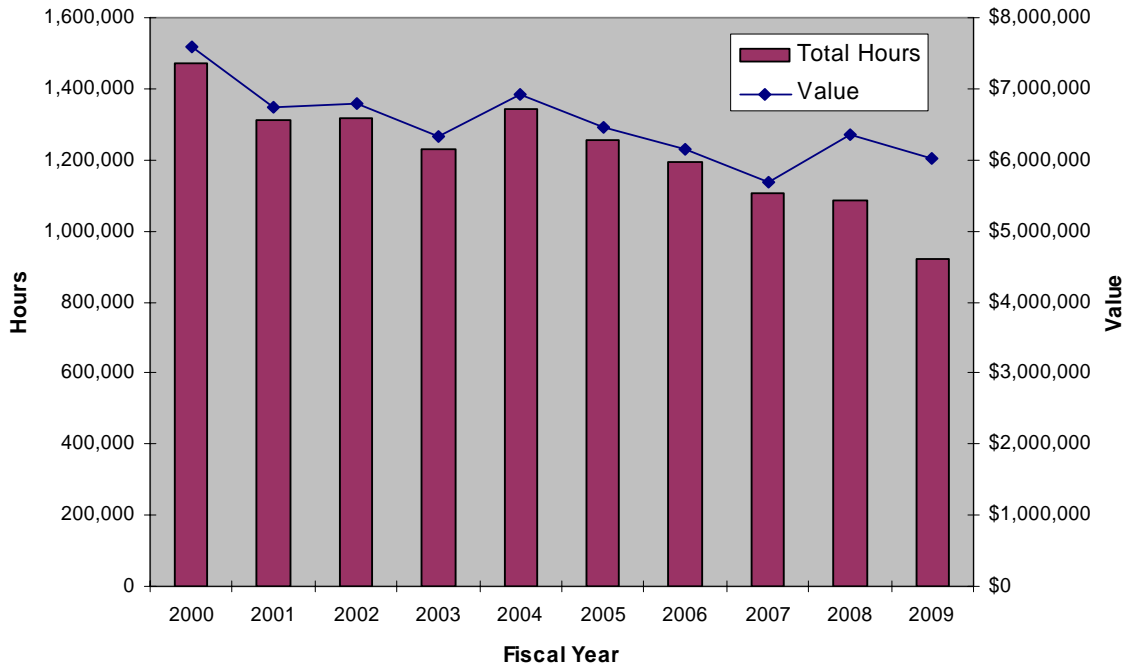
COUNTY	TDOC		BACKUP		LOCAL		SYSTEMWIDE		COUNTY	TDOC		BACKUP		LOCAL		SYSTEMWIDE	
	#	%	#	%	#	%	#	%		#	%	#	%	#	%	#	%
ANDERSON	109	0.6%	42	0.9%	0	0.0%	151	0.6%	LAUDERDALE	117	0.6%	19	0.4%	3	0.1%	139	0.5%
BEDFORD	249	1.3%	58	1.3%	2	0.1%	309	1.1%	LAWRENCE	118	0.6%	19	0.4%	2	0.1%	139	0.5%
BENTON	32	0.2%	11	0.2%	1	0.0%	44	0.2%	LEWIS	33	0.2%	6	0.1%	1	0.0%	40	0.1%
BLED SOE	25	0.1%	4	0.1%	0	0.0%	29	0.1%	LINCOLN	129	0.7%	18	0.4%	2	0.1%	149	0.5%
BLOUNT	265	1.4%	67	1.4%	5	0.1%	337	1.2%	LOUDON	51	0.3%	6	0.1%	8	0.2%	65	0.2%
BRADLEY	276	1.4%	132	2.8%	9	0.3%	417	1.5%	McMINN	185	1.0%	89	1.9%	6	0.2%	280	1.0%
CAMPBELL	158	0.8%	50	1.1%	9	0.3%	217	0.8%	McNAIRY	57	0.3%	8	0.2%	2	0.1%	67	0.2%
CANNON	52	0.3%	8	0.2%	0	0.0%	60	0.2%	MACON	29	0.1%	23	0.5%	0	0.0%	52	0.2%
CARROLL	89	0.5%	17	0.4%	1	0.0%	107	0.4%	MADISON	688	3.6%	32	0.7%	9	0.3%	729	2.7%
CARTER	109	0.6%	40	0.9%	17	0.5%	166	0.6%	MARION	88	0.5%	14	0.3%	1	0.0%	103	0.4%
CHEATHAM	95	0.5%	13	0.3%	3	0.1%	111	0.4%	MARSHALL	209	1.1%	27	0.6%	0	0.0%	236	0.9%
CHESTER	70	0.4%	2	0.0%	2	0.1%	74	0.3%	MAURY	363	1.9%	39	0.8%	2	0.1%	404	1.5%
CLAIBORNE	100	0.5%	30	0.6%	1	0.0%	131	0.5%	MEIGS	7	0.0%	2	0.0%	1	0.0%	10	0.0%
CLAY	7	0.0%	14	0.3%	0	0.0%	21	0.1%	MONROE	104	0.5%	82	1.8%	4	0.1%	190	0.7%
COCKE	145	0.7%	25	0.5%	3	0.1%	173	0.6%	MONTGOMERY	309	1.6%	53	1.1%	6	0.2%	368	1.3%
COFFEE	222	1.1%	54	1.2%	8	0.2%	284	1.0%	MOORE	22	0.1%	5	0.1%	0	0.0%	27	0.1%
CROCKETT	40	0.2%	13	0.3%	0	0.0%	53	0.2%	MORGAN	18	0.1%	3	0.1%	0	0.0%	21	0.1%
CUMBERLAND	110	0.6%	24	0.5%	2	0.1%	136	0.5%	OBION	128	0.7%	29	0.6%	1	0.0%	158	0.6%
DAVIDSON	3,360	17.4%	311	6.7%	898	26.2%	4569	16.7%	OVERTON	33	0.2%	35	0.8%	3	0.1%	71	0.3%
DECATUR	41	0.2%	4	0.1%	0	0.0%	45	0.2%	PERRY	26	0.1%	6	0.1%	0	0.0%	32	0.1%
DEKALB	69	0.4%	6	0.1%	3	0.1%	78	0.3%	PICKETT	6	0.0%	3	0.1%	1	0.0%	10	0.0%
DICKSON	159	0.8%	27	0.6%	7	0.2%	193	0.7%	POLK	31	0.2%	34	0.7%	0	0.0%	65	0.2%
DYER	186	1.0%	67	1.4%	0	0.0%	253	0.9%	PUTNAM	193	1.0%	45	1.0%	2	0.1%	240	0.9%
FAYETTE	62	0.3%	46	1.0%	2	0.1%	110	0.4%	RHEA	51	0.3%	18	0.4%	0	0.0%	69	0.3%
FENTRESS	55	0.3%	39	0.8%	1	0.0%	95	0.3%	ROANE	81	0.4%	15	0.3%	1	0.0%	97	0.4%
FRANKLIN	123	0.6%	28	0.6%	10	0.3%	161	0.6%	ROBERTSON	196	1.0%	18	0.4%	5	0.1%	219	0.8%
GIBSON	157	0.8%	32	0.7%	1	0.0%	190	0.7%	RUTHERFORD	426	2.2%	265	5.7%	13	0.4%	704	2.6%
GILES	120	0.6%	11	0.2%	1	0.0%	132	0.5%	SCOTT	70	0.4%	49	1.1%	5	0.1%	124	0.5%
GRAINGER	62	0.3%	20	0.4%	1	0.0%	83	0.3%	SEQUATCHIE	39	0.2%	17	0.4%	6	0.2%	62	0.2%
GREENE	149	0.8%	53	1.1%	65	1.9%	267	1.0%	SEVIER	237	1.2%	61	1.3%	7	0.2%	305	1.1%
GRUNDY	36	0.2%	5	0.1%	2	0.1%	43	0.2%	SHELBY	2427	12.5%	962	20.8%	1,688	49.3%	5077	18.5%
HAMBLEN	184	1.0%	37	0.8%	63	1.8%	284	1.0%	SMITH	42	0.2%	13	0.3%	0	0.0%	55	0.2%
HAMILTON	800	4.1%	71	1.5%	10	0.3%	881	3.2%	STEWART	17	0.1%	5	0.1%	3	0.1%	25	0.1%
HANCOCK	22	0.1%	8	0.2%	12	0.4%	42	0.2%	SULLIVAN	673	3.5%	290	6.3%	29	0.8%	992	3.6%
HARDEMAN	106	0.5%	11	0.2%	5	0.1%	122	0.4%	SUMNER	437	2.3%	135	2.9%	45	1.3%	617	2.3%
HARDIN	61	0.3%	35	0.8%	2	0.1%	98	0.4%	TIPTON	161	0.8%	22	0.5%	3	0.1%	186	0.7%
HAWKINS	119	0.6%	50	1.1%	0	0.0%	169	0.6%	TROUSDALE	30	0.2%	17	0.4%	0	0.0%	47	0.2%
HAYWOOD	61	0.3%	19	0.4%	2	0.1%	82	0.3%	UNICOI	40	0.2%	14	0.3%	3	0.1%	57	0.2%
HENDERSON	98	0.5%	9	0.2%	2	0.1%	109	0.4%	UNION	79	0.4%	25	0.5%	0	0.0%	104	0.4%
HENRY	128	0.7%	35	0.8%	1	0.0%	164	0.6%	VAN BUREN	15	0.1%	5	0.1%	0	0.0%	20	0.1%
HICKMAN	81	0.4%	19	0.4%	0	0.0%	100	0.4%	WARREN	186	1.0%	26	0.6%	2	0.1%	214	0.8%
HOUSTON	15	0.1%	4	0.1%	3	0.1%	22	0.1%	WASHINGTON	258	1.3%	127	2.7%	36	1.1%	421	1.5%
HUMPHREYS	56	0.3%	9	0.2%	2	0.1%	67	0.2%	WAYNE	69	0.4%	21	0.5%	0	0.0%	90	0.3%
JACKSON	24	0.1%	10	0.2%	0	0.0%	34	0.1%	WEAKLEY	65	0.3%	27	0.6%	1	0.0%	93	0.3%
JEFFERSON	122	0.6%	90	1.9%	4	0.1%	216	0.8%	WHITE	56	0.3%	11	0.2%	2	0.1%	69	0.3%
JOHNSON	21	0.1%	11	0.2%	5	0.1%	37	0.1%	WILLIAMSON	237	1.2%	50	1.1%	2	0.1%	289	1.1%
KNOX	1535	7.9%	102	2.2%	19	0.6%	1656	6.0%	WILSON	288	1.5%	55	1.2%	0	0.0%	343	1.3%
LAKE	26	0.1%	17	0.4%	0	0.0%	43	0.2%	*UNKNOWN	39	0%	0	0%	336	10%	375	1.4%
TOTAL										19,354	100%	4635	100%	3,425	90%	27,414	100%

Offender Accountability, Programs & Services



HOURS AND VALUE OF COMMUNITY SERVICE WORK

**Total Hours and Estimated Value of Community Service Work
FY 2008-2009**



Community Service work Hours Worked by Facility: FY 2008-2009

	1st Quarter	2nd Quarter	3rd Quarter	4th Quarter	Facility Total
BMCX	10,962	4,113			15,075
CBCX	57,866	43,963	45,024	46,504	193,357
HCCF	3,433	1,875	2,296	3,633	11,237
MCCX	35,555	22,314	27,158	29,084	114,111
MLCC	3,974	4,024	3,324	4,416	15,738
NECX	49,656	40,732	38,142	43,178	171,708
NWCX	19,375	15,372	13,344	16,914	65,005
SCCF	7,996	6,579	5,696	6,101	26,372
STSR	9,823	9,255	8,546	8,014	35,638
TPFW	31,689	31,960	34,265	32,376	130,290
TCIX	23,549	33,901	33,629	35,847	126,926
WCBC	12,299				12,299
WTSP	660	616	900	960	3,136
SYSTEM	266,837	214,704	212,324	227,027	920,892
TOTAL SAVINGS: Dollar Value @ Minimum Wage					\$6,031,842.60

INMATE ASSIGNMENTS

INMATE ASSIGNMENTS

June 30, 2009

Assignment	Inmates	% of Population
Academic Education	1,925	9.95%
Vocational Programs	1,490	7.70%
Support	5,378	27.78%
Program Services	1,251	6.47%
TRICOR	854	4.41%
Work Lines	343	1.78%
Other Agencies	161	0.84%
Community Service	423	2.19%
Work Release	49	0.25%
Mental Health	341	1.77%
Boot Camp	53	0.27%
Pre-Release	466	2.41%
Recycling	196	1.01%
Substance Abuse	1,149	5.93%
Transition Center Program	88	0.45%
Technical Viol. Diversion Program	145	0.75%
Cognitive Behavioral Program	33	0.02%
Other	756	3.90%
Total Assigned	15,101	77.90%
Unassignable Status*	2,582	13.3%
Job Waiting List	1,678	8.7%
TOTAL INMATES	19,361	100.0%
% of Eligible Inmates Assigned		90.0%

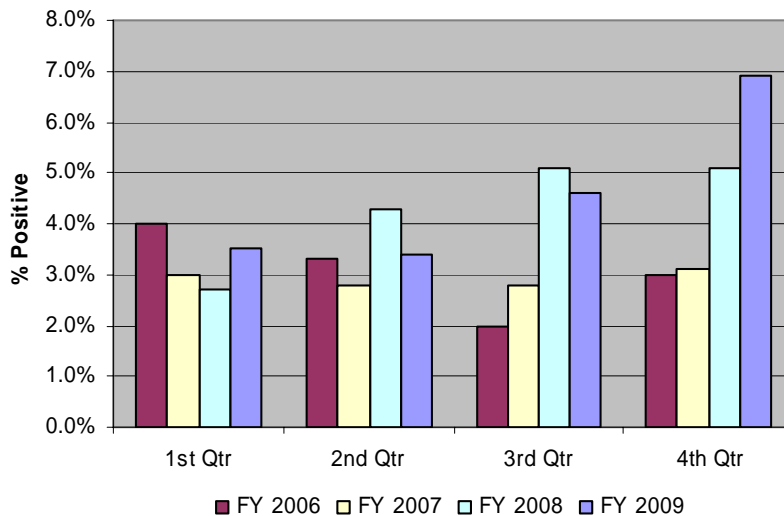
*Inmates who can not be assigned due to their status, which may include those in segregation, classification, etc.

DRUG SCREENS: FY 2008 – 2009

Random drug screens are conducted monthly on 2.5% of the inmate population. These screens are necessary to identify the use of contraband substances frequently used in prison. In addition, substance abuse program participants are randomly selected for regularly scheduled drug tests. All positive screens are confirmed through additional testing, and graduated sanctions are used for any positive drug screen.

FY 2009				FY 2008 %POSITIVE	FY 2007 %POSITIVE	FY 2006 %POSITIVE
QTR	NUMBER TESTED	# POSITIVE	% POSITIVE			
1ST	2,832	99	3.5%	2.7%	3.0%	4.0%
2ND	2,513	86	3.4%	4.3%	2.8%	3.3%
3RD	2,029	94	4.6%	5.1%	2.8%	2.0%
4TH	9,507	656	6.9%	5.1%	3.1%	3.0%

Postive Drug Test Results by Percentage



EDUCATION: FY 2008 – 2009

EDUCATIONAL ENROLLMENT: FY 2008-2009								
INSTITUTION	ABE/GED		SEGREGATED Closed Circuit TV	VOLUNTEER LITERACY	COLLEGE	VOCATIONAL		TOTAL
	Full-Time	Part-Time				Full-time	Part-Time	
BMCX*	0	0	0	0	0	0	0	0
CBCX	0	0	0	0	0	0	0	0
DSNF	0	86	0	0	6	0	0	92
HCCF	360	0	0	0	0	157	0	517
MCCX	143	0	0	33	26	90	0	292
MLCC	56	0	0	7	11	47	0	121
NECX	97	7	0	12	75	92	113	396
NWCX	331	0	0	32	56	262	0	681
RMSI	63	13	0	21	13	39	0	149
SCCF	214	0	0	0	16	157	0	387
STSRCF	53	9	0	31	1	96	0	190
TCIX**	129	0	0	0	15	132	0	276
TPW	89	0	0	0	51	52	0	192
WCFA	261	0	0	0	2	144	0	407
WTSP	221	0	103	13	1	197	0	535
YEARLY TOTALS	2017	115	103	149	273	1465	113	4235

TEST RESULTS: FY 2008-2009				
INSTITUTION NAME	GED			VOCATIONAL
	Tested	# Passing	% Passed	# Graduates
BMCX*	1	1	100.0%	0
CBCX	12	6	50.0%	0
DSNF	17	10	58.8%	0
HCCF	130	67	51.5%	150
MLCC	20	18	90.0%	36
MCCX	81	67	82.7%	71
NECX	102	53	52.0%	50
NWCX	188	101	53.7%	295
RMSI	47	26	55.3%	36
SCCF	115	61	53.0%	45
STSRCF	73	44	60.3%	114
TCIP**	52	38	73.1%	174
TPW	45	37	82.2%	48
WCBC**	29	14	48.3%	0
WTSP	165	94	57.0%	221
WCFA	147	100	68.0%	228
SYSTEMWIDE TOTAL	1224	737	60.2%	1468

GED & Vocational Certificates: FY 2001-2009									
FY	2001	2002	2003	2004	2005	2006	2007	2008	2009
GED	766	511	326	606	598	464	685	786	737
Vocational	692	865	425	1434	1765	1473	1365	1342	1468

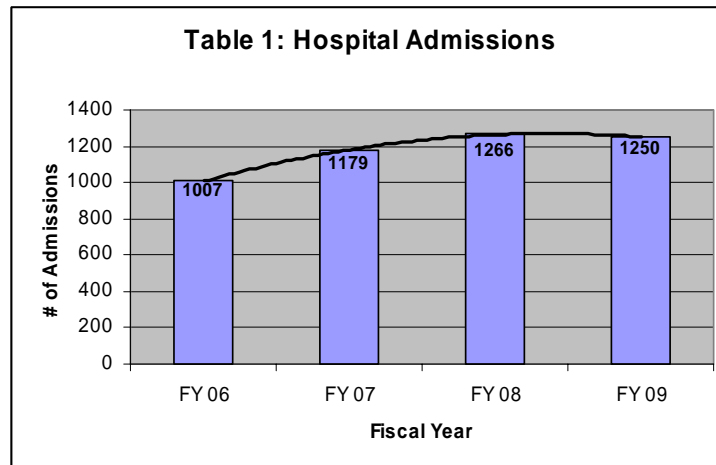
*BMCX officially closed on June 11, 2009.

**WCBC was consolidated with Turney Center Industrial Prison (TCIP) to form TCIX in October 2008.

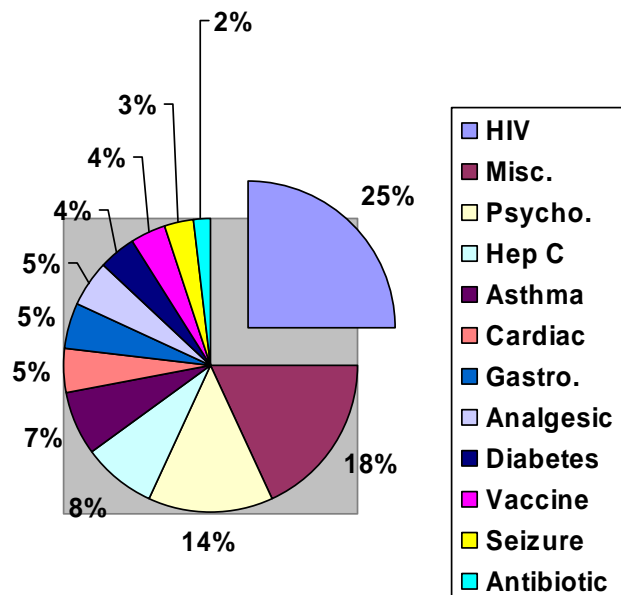
CLINICAL SERVICES DIVISION
Health Services

The Office of Health Services establishes the policy standards for the delivery of offender health care provided by all prison facilities. The primary objective is to improve the health status of our offender population while remaining fiscally responsible to the taxpayers of Tennessee. The Department continues to seek effective means to decrease its correctional healthcare costs while maintaining appropriate clinical outcomes.

In FY 2009, there were 1,250 hospital admissions resulting in an average length of stay (ALOS) of 3.4 days.

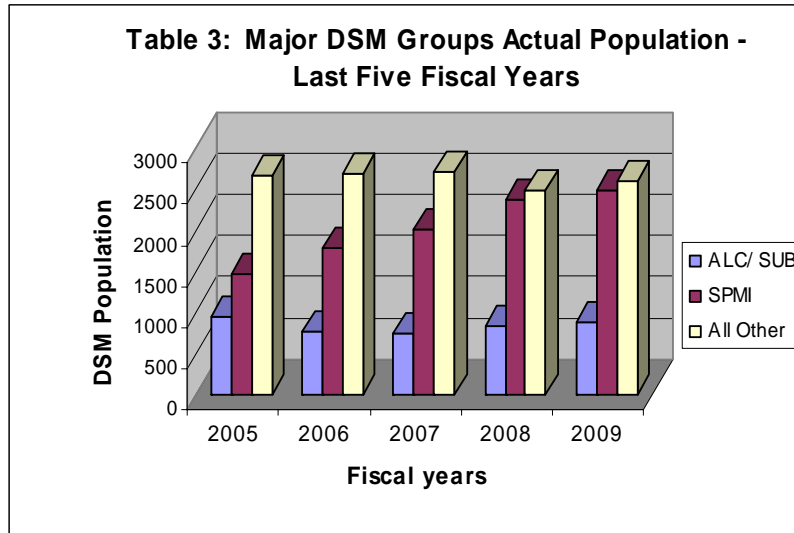


Pharmaceutical costs represented a significant percentage of the Department’s total health care budget (See Table 2). Consequently, a major focus continues to be the surveillance and containment of infectious diseases (e.g., HIV, hepatitis C, MRSA, and TB) as well as the treatment of chronic illnesses (e.g., liver disease, hypertension, and cancer).

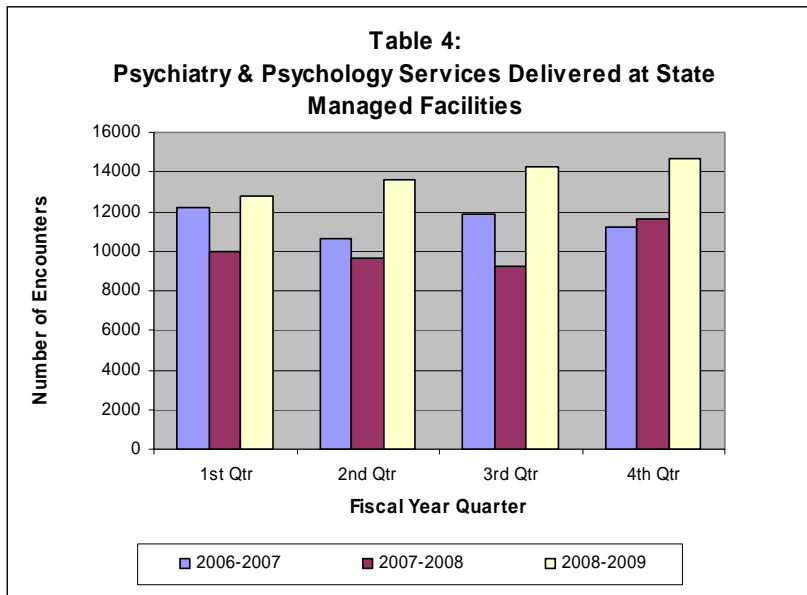


Mental Health Services

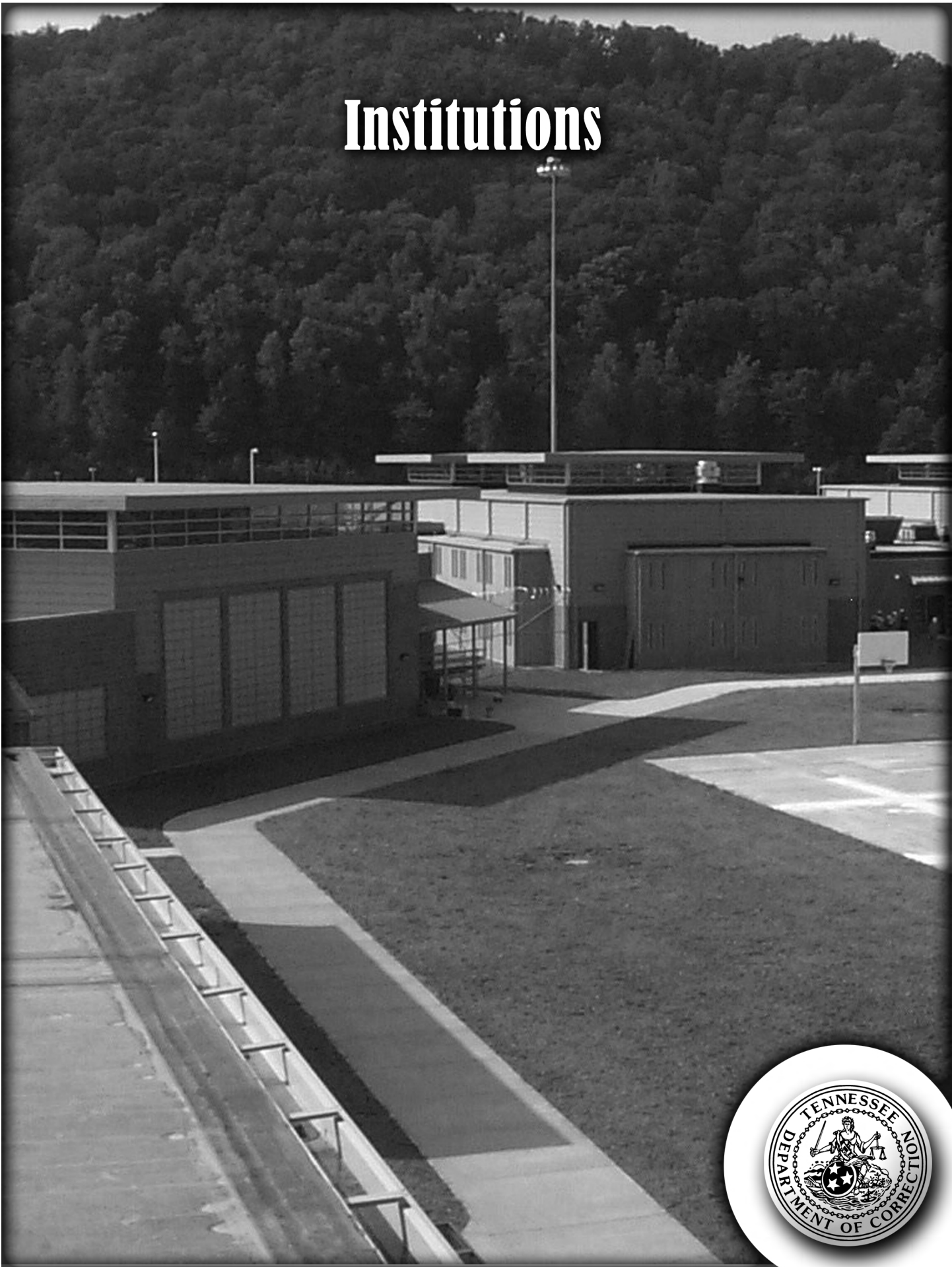
The Office of Mental Health Services sets policy standards for the delivery of mental health treatment and evaluates the care provided throughout the TDOC system. The mental health caseload continues to grow statewide. There are approximately 5,679 mentally ill offenders diagnosed within the TDOC system, an increase of almost 4% from the previous fiscal year. Table 3 provides data on major Diagnostic and Statistical Manual (DSM) of Mental Disorders Groups in the TDOC population for fiscal years 2005-2009.



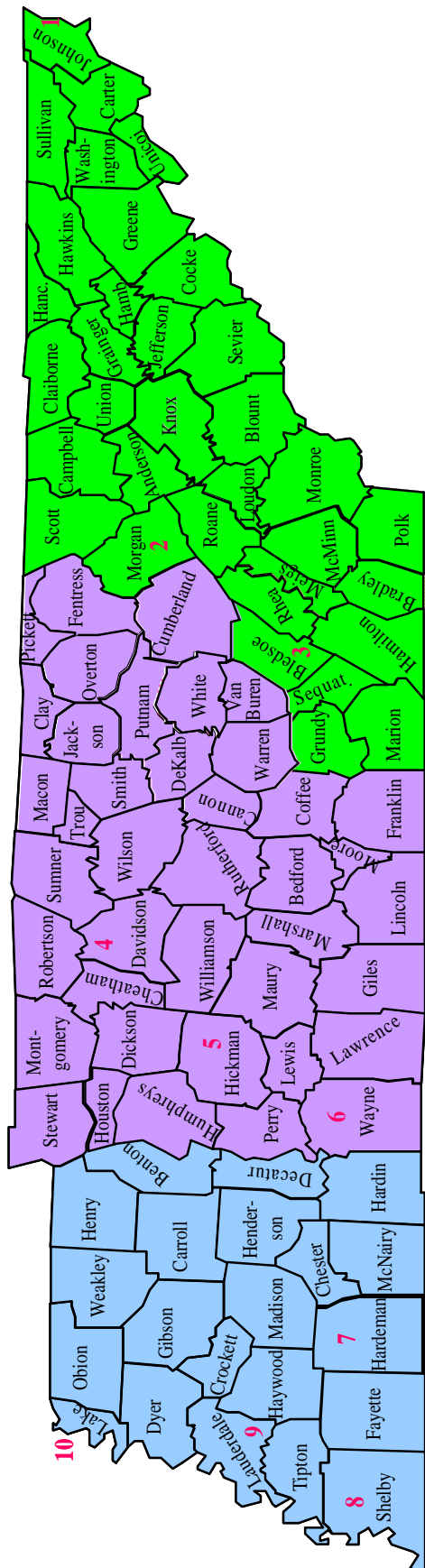
In collaboration with the mental health vendor, we provide a continuum of services including individual and group psychotherapy, medication management, crisis intervention, and parole evaluations. Additionally, as part of the Department's Transition Re-entry Collaborative (TREC), this division has partnered with community mental health agencies to link offenders to treatment services upon sentence expiration or parole.



Institutions



TDOC Facilities and Security Designations: June 30, 2009



County	Facility	Security Level
1. Johnson	Northeast Correctional Complex	Maximum
2. Morgan	Morgan County Correctional Complex	Maximum
3. Bledsoe	Southeastern Tennessee State Regional Correctional Facility	Close
4. Davidson	Charles Bass Correctional Complex	Close
	DeBerry Special Needs Facility	Maximum
	Riverbend Maximum Security Institution	Maximum
	Tennessee Prison for Women	Maximum
5. Hickman	Turney Center Industrial Complex	Close
6. Wayne	South Central Correctional Facility	Close
7. Hardeman	Hardeman County Correctional Facility	Medium
	Whiteville Correctional Facility	Medium
8. Shelby	Mark Luttrell Correctional Center	Close
9. Lauderdale	West Tennessee State Penitentiary	Maximum
10. Lake	Northwest Correctional Complex	Close

Custody Level	Number of Offenders	Percent of Total
Maximum	937	4.8%
Close	590	3.0%
Medium	13,910	71.9%
Minimum	3,444	17.8%
Unclassified	473	2.4%
TOTAL	19,354	100.0%

Average Daily Population: FY 2008-2009

Institution	Average Daily Population
Brushy Mountain Correctional Complex*	393
Charles Bass Correctional Complex	1047
DeBerry Special Needs Facility	725
Hardeman County Correctional Facility	1990
Mark Luttrell Correctional Center	410
Morgan County Correctional Complex	1156
Northeast Correctional Complex	1800
Northwest Correctional Complex	2334
Riverbend Maximum Security Institution	703
South Central Correctional Facility	1653
Southeastern TN State Regional Corr. Facility	936
Tennessee Prison for Women	745
Turney Center Industrial Complex	1549
Whiteville Correctional Facility	1522
West Tennessee State Penitentiary	2510
System Total	19473

*Brushy Mountain was closed on June 11, 2009

Source: TDOC Bedspace and Operating Capacities Report

Demographics by Facility
FY 2008-2009

	AGE									RACE			GENDER	
	<20	20-24	25-29	30-34	35-39	40-49	50+	Not Known	Avg Age	Black	White	Other/Unknown	Male	Female
BMCX	0	0	1	4	3	1	1	0	36.9	1	9	0	10	0
CBCX	8	128	167	156	143	259	137	1	37.1	567	408	24	999	0
DSNF	2	40	70	74	72	153	181	0	42.8	224	349	19	592	0
HCCF	14	197	358	381	290	475	267	0	37.0	1,057	883	42	1982	0
MCCX	10	180	290	272	199	383	233	0	37.0	434	1,114	19	1567	0
MLCC	1	37	77	83	98	88	39	0	35.9	154	262	7	0	423
NECX	5	144	286	275	275	519	303	0	38.9	463	1,301	43	1,807	0
NWCX	77	339	350	338	340	534	391	0	37.0	1,077	1,202	90	2,369	0
RMSI	2	50	112	113	113	166	134	0	38.9	375	303	12	690	0
SCCF	6	185	323	310	239	389	199	0	36.3	738	839	74	1,651	0
STSR	3	48	130	159	150	245	212	0	40.2	289	644	14	947	0
TCIX	10	149	262	310	250	353	203	0	37.0	841	649	47	1,537	0
TPFW	3	68	130	130	140	186	86	0	36.9	173	555	15	0	743
WCFA	16	258	311	267	190	314	164	0	34.8	899	591	30	1,520	0
WTSP	26	362	510	472	349	543	255	0	35.1	1,447	1,015	55	2,517	0
SYSTEM	183	2,185	3,377	3,344	2,851	4,608	2,805	1	37.5	8,739	10,124	491	18,188	1166

Facility Populations by Primary Offense: June 30, 2009

Facility Population	Percent of Individual Facility Population														
	BMCX	CBCX	DSNF	HCCF	MCCX	MLCC	NECX	NWCX	RMSI	SCCF	STSRC	TCIX	TPW	WCFA	WTSP
OFFENSE	15	1,051	718	1,983	1,502	413	1,807	2,340	707	1,653	935	1,535	749	1,522	2,500
PERSON OFFENSES	30%	25%	66%	53%	46%	36%	52%	48%	66%	40%	63%	43%	37%	42%	43%
Homicide	20%	8%	24%	18%	21%	21%	24%	16%	42%	13%	28%	22%	21%	14%	19%
Kidnapping	0%	1%	1%	1%	1%	0%	2%	1%	1%	2%	1%	1%	1%	1%	1%
Sex Offenses	0%	4%	31%	22%	15%	2%	15%	17%	11%	16%	25%	11%	3%	13%	10%
Assault	10%	12%	9%	13%	9%	13%	11%	13%	12%	10%	10%	9%	12%	15%	13%
PROPERTY OFFENSES	30%	36%	21%	27%	29%	33%	29%	33%	25%	31%	22%	31%	32%	33%	34%
Arson	0%	0%	0%	0%	1%	0%	1%	1%	0%	1%	0%	1%	0%	0%	1%
Burglary	10%	13%	5%	8%	11%	8%	9%	10%	5%	10%	6%	9%	7%	10%	10%
Forgery/Fraud	0%	2%	1%	1%	1%	9%	1%	2%	0%	1%	0%	1%	7%	2%	2%
Larceny/Theft	0%	7%	3%	3%	6%	6%	5%	4%	2%	4%	2%	3%	8%	3%	5%
Robbery	20%	14%	12%	15%	10%	10%	13%	16%	18%	15%	13%	17%	9%	18%	17%
SOCIETAL OFFENSES	30%	30%	10%	15%	20%	21%	14%	15%	7%	23%	11%	23%	21%	20%	17%
Drugs/Narcotics	30%	30%	9%	14%	18%	19%	12%	13%	7%	22%	10%	22%	19%	19%	16%
Vehicular Homicide/DUI	0%	1%	1%	1%	2%	2%	2%	1%	0%	1%	1%	1%	3%	1%	1%
ALL OTHER OFFENSES	10%	9%	4%	4%	5%	10%	5%	5%	2%	6%	4%	4%	9%	6%	6%
C/S/F Person*	0%	2%	0%	1%	1%	4%	1%	1%	1%	1%	1%	1%	4%	1%	1%
C/S/F Property*	0%	1%	0%	0%	0%	1%	0%	0%	0%	0%	0%	1%	1%	0%	0%
C/S/F Societal*	0%	2%	0%	0%	0%	1%	0%	1%	0%	1%	0%	1%	1%	1%	0%
Escape	0%	0%	0%	0%	0%	0%	0%	0%	0%	0%	0%	1%	0%	0%	0%
All Other**	10%	5%	4%	2%	4%	3%	3%	3%	1%	3%	1%	0%	3%	3%	4%
TOTAL	100%	100%	100%	100%	100%	100%	100%	100%	100%	100%	100%	100%	100%	100%	100%

**Includes 39 missing or unprocessed judgement orders. * C/S/F = Refers to non-substantive offenses such as conspiracy, solicitation, facilitation, aiding and abetting, etc.

Incidents: FY 2008 - 2009

	1st Qtr	2nd Qtr	3rd Qtr	4th Qtr	Total
Rape	1	0	0	1	2
Weapon Offenses	182	189	199	224	794
Drug Offenses	186	193	195	227	801
STG Offenses	142	98	136	166	542
Riot	0	0	0	0	0
Sexual Misconduct	214	259	192	237	902
Assault					
Assault on Offender	123	121	82	118	444
Assault on Staff	198	186	183	159	726
Death					
Homicide	0	0	1	3	4
Suicide	1	0	1	1	3
Accidental Death	0	0	0	0	0
Natural Death	16	21	21	11	69
Lethal Injection	0	0	1	0	1
Escape					
Secure Supervision	0	0	1	0	1
Minimum Security	1	1	1	1	4
Minimum Security - Work Crew - Supervised	0	0	1	0	1
Minimum Security - Work Crew - Unsupervised	0	0	0	0	0
Furlough/Pass	0	0	0	0	0
Non-Violent Incident Rate (per 100 inmates)	16.85	16.15	16.32	17.75	67.08
Violent Incident Rate (per 100 inmates)	2.18	2.01	1.93	2.45	8.57
Total Incident Rate (per 100 inmates)	19.03	18.16	18.25	20.2	75.64

TDOC INCIDENT SUMMARY: FY 2008-2009

Inc Type	V?	Incident Description	Average Population													SYSTEM		
			MLCC	TPW	RMSI	DSNF	STSRC	CBCX	TCIX**	SCCC	NECX	MCCX	BMCX	WTSP	HCCC		NWCX	WCFA
			Maik H. Luttrell Reception Center	TN Prison Women	Riverbend Maximum Security Institution	DeBerry Special Needs Facility	Southeastern TN State	Charles Bass Correctional Complex	Taney Center Industrial Complex	South Central Correctional Center	North East Correctional Complex	Morgan County Correctional Complex	Brushy Mountain Correctional Complex	West TN State Penitentiary	Hardeman County Correctional Center	Northwest Correctional Complex	Whiteville Correctional Facility	
			405	737	696	712	929	1026	1530	1628	1768	1152	389	2456	1963	2300	1489	19179
Arrest		ABT FURL/PASS-VIOLENT CRIME	0	0	0	0	0	0	0	0	0	0	0	0	0	0	0	0
Arrest		ABS FURL/PASS-FELONY	0	0	0	0	0	0	0	0	0	0	0	0	0	0	0	0
Arrest		ABM FURL/PASS-MISDEMEANOR	0	0	0	0	0	0	0	0	0	0	0	0	0	0	0	0
Arrest		AFO FELONY-OFN	0	0	0	0	0	0	0	0	0	0	0	0	0	0	0	0
Arrest		AFS FELONY-STAFF	0	0	1	1	0	2	1	1	2	0	0	1	2	0	8	19
Arrest		AFV FELONY-VISITOR	2	0	0	0	4	3	15	7	6	4	0	17	3	4	10	75
Ason	*	ARI SER-INT-PROP DMG->\$500-OPER DISRUP	0	0	0	5	0	0	0	0	0	0	0	0	0	0	0	5
Ason	*	ARD INJURY-PROP DMG/\$500-OPR DISRUP	0	0	0	0	0	0	0	0	0	0	0	0	0	0	0	0
Ason	*	ARP PROP DMG->\$500	0	0	1	1	0	0	0	0	0	0	0	1	0	0	0	3
Assault	*	ASA STAFF-SERIOUS INJURY	0	0	0	2	0	0	0	0	0	0	1	0	0	4	4	11
Assault	*	ASB STAFF-INJURY	2	3	8	12	0	4	13	3	2	0	2	4	6	5	2	66
Assault	*	ASC STAFF-MINOR INJURY	8	5	11	24	3	6	21	14	9	5	6	24	11	30	21	198
Assault	*	ASJ STAFF-NO INJURY	5	7	67	91	7	14	24	31	25	9	12	48	36	39	36	451
Assault	*	ASD OFN-SERIOUS INJURY	1	0	0	1	0	0	8	3	2	1	2	9	7	5	3	42
Assault	*	ASE OFN-INJURY	6	1	2	3	4	4	12	19	4	0	5	15	12	14	16	117
Assault	*	ASF OFN-MINOR INJURY	7	2	12	1	4	4	4	15	9	1	2	23	21	39	19	163
Assault	*	ASK OFN-NO INJURY	10	7	11	12	3	7	1	8	5	1	3	7	23	14	10	122
Assault	*	ASG VIS-SERIOUS INJURY	0	0	0	0	0	0	0	0	0	0	0	0	0	0	0	0
Assault	*	ASH VIS-INJURY	0	0	0	0	0	0	0	0	0	0	0	0	0	0	0	0
Assault	*	ASI VIS-MINOR INJURY	0	0	0	0	0	0	0	0	0	0	0	0	0	1	0	1
Assault	*	ASM VIS-NO INJURY	0	0	0	0	0	0	0	0	0	0	0	0	0	0	0	0
Death		DEA OFN-NATURAL	0	1	0	51	2	0	1	2	5	1	0	3	2	1	0	69
Death		DEC DEATH-OFN-EXEC-ELEC CHR	0	0	0	0	0	0	0	0	0	0	0	0	0	0	0	0
Death	*	DEH OFN-HOMICIDE	0	0	0	0	0	0	1	0	1	0	0	0	0	2	0	4
Death		DEI OFN-EXEC-LETH INJ	0	0	1	0	0	0	0	0	0	0	0	0	0	0	0	1
Death	*	DES OFN-SUICIDE	0	0	0	0	0	0	1	1	0	0	0	0	0	0	1	3
Death		DOA OFN-ACCIDENT	0	0	0	0	0	0	0	0	0	0	0	0	0	0	0	0
Death	*	DEG STAFF-HOMICIDE (ON DUTY)	0	0	0	0	0	0	0	0	0	0	0	0	0	0	0	0
Death	*	DEF STAFF-SUICIDE (ON DUTY)	0	0	0	0	0	0	0	0	0	0	0	0	0	0	0	0
Death		DED STAFF-ACCIDENT (ON DUTY)	0	0	0	0	0	0	0	0	0	0	0	0	0	0	0	0
Death		DET STAFF (ON DUTY)-NATURAL	0	0	0	0	0	0	0	0	0	0	0	0	0	0	0	0
Death		DEV VISITOR	0	0	0	0	0	0	0	0	0	0	0	0	0	0	0	0
Death	*	DVH VISITOR-HOMICIDE	0	0	0	0	0	0	0	0	0	0	0	0	0	0	0	0
Death	*	DVS VISITOR-SUICIDE	0	0	0	0	0	0	0	0	0	0	0	0	0	0	0	0
Death		DVA VISITOR-ACCIDENT	0	0	0	0	0	0	0	0	0	0	0	0	0	0	0	0
Death		DVN VISITOR-NATURAL	0	0	0	0	0	0	0	0	0	0	0	0	0	0	0	0
Disturbance		DIL TEMP CONTROL LOSS	0	0	0	0	0	0	0	0	0	0	0	0	0	0	0	1
Disturbance		DIR THREAT CONTROL LOSS	0	0	0	1	1	2	5	0	0	13	3	1	0	0	2	28
Disturbance		DIS MINOR	14	121	81	49	61	35	164	325	144	83	61	249	332	324	236	2279

TDOC INCIDENT SUMMARY: FY 2008-2009

Inc Type	V?	Average Population														SYSTEM	
		MLCC	TPW	RMSI	DSNF	DSNF	STSR	STSR	CBCX	TCIX**	TCIX**	SCCC	NECX	MCCX	BMCX		WTSP
		Mark H Linnell Reception Center	TN Prison for Women	Riverside Maximum Security Institution	Dalbey Special Needs Facility	Southwestern TN State	Charles Bass Correctional Complex	Turney Center Industrial Complex	South Central Correctional Center	NECX Correctional Complex	MCCX Morgan County Correctional Complex	BMCX Bradley Mountain Correctional Complex	WTSP West TN State Penitentiary	HCCC Hickman County Correctional Center	NWCX Northwest Correctional Complex	WCFA Whiteville Correctional Facility	
Other		405	737	696	712	929	1026	1530	1628	1768	1152	389	2456	1963	2300	1489	19179
Other	BTH BOMB THREAT	0	0	0	0	0	0	0	0	0	0	0	0	0	0	0	0
Other	CON CONTRABAND	66	47	178	91	128	91	263	462	124	61	42	171	156	289	169	2338
Other	PCT POSS/USE CELLULAR TEL.	1	0	37	4	25	58	167	181	80	31	0	182	184	123	56	1129
Other	PTO POSS/USE TOBACCO PROD.	60	43	72	70	104	116	127	120	198	119	64	110	150	244	71	1668
Other	PDA PROF DMG-\$500	2	1	5	5	2	5	8	1	2	8	2	11	0	8	4	64
Other	SXM SEXUAL MISCONDUCT	29	18	72	39	36	10	57	204	72	12	13	89	11	202	38	902
Other	* RAP RAPE	0	0	0	0	0	0	0	0	0	0	0	0	0	0	0	2
Other	* RIO RIOT	0	0	0	0	0	0	0	0	0	0	0	0	0	0	0	0
Other	* SBT SABOTAGE - OPR DISRUP	0	0	0	0	0	0	0	0	0	0	0	0	0	0	0	0
Other	* HOS HOSTAGE SITUATION	0	0	0	0	0	0	0	0	0	0	0	0	0	0	0	0
Other	EHT EPIDEMIC PUBLIC HEALTH THREAT	0	0	0	0	0	0	0	0	0	0	0	0	0	0	0	0
Other	PGA PART IN STG ACTIVITY	0	0	0	0	0	0	0	0	0	0	0	0	0	0	0	0
Other	PGM POSSESS STG MATERIAL	2	0	5	0	8	22	28	93	13	18	5	26	34	40	61	355
Other	ILP INST LOCKDOWN-PARTIAL	0	0	0	1	0	3	3	7	1	0	0	3	2	3	3	26
Other	ILT INST LOCKDOWN-TOTAL	1	0	3	0	0	2	1	4	0	0	0	0	3	1	3	18
Strike	SKI INMATE-OPER DISRUP	0	0	0	0	0	0	0	0	0	0	0	0	0	0	0	0
Strike	SKS STAFF-OPER DISRUP	0	0	0	0	0	0	0	0	0	0	0	0	0	0	0	0
Suicide	* SUA ATT-SERIOUS INJURY	1	0	0	0	0	0	0	1	1	0	0	0	0	0	0	4
Suicide	* SUC ATTEMPT	1	2	5	6	1	2	2	2	1	4	1	1	5	1	5	39
Use of Force	UFC CHEMICAL AGENTS	0	0	4	1	2	0	1	32	14	2	1	29	39	22	45	192
Use of Force	UFD DEADLY WEAPON	0	0	0	0	0	0	0	0	0	0	0	0	0	0	0	0
Use of Force	UFE ELEC RESTRAINTS	0	0	12	5	1	0	1	1	3	1	4	9	3	5	4	49
Use of Force	UFL LESS THAN LETHAL	0	0	1	0	0	0	0	0	0	0	1	0	0	0	0	2
Use of Force	UFM MEDICAL	0	13	11	72	0	0	0	0	2	0	0	1	0	2	0	101
Use of Force	UFP PHYSICAL	1	13	32	18	4	4	17	47	15	4	1	61	28	30	27	302
Weapon	WAB AMMUNITION	0	1	0	0	0	2	1	0	1	0	1	2	0	0	0	8
Weapon	WAM AMMUNITION-SIGNIF AMT	0	0	0	0	0	0	0	0	0	1	0	0	0	0	0	1
Weapon	WCF COMMERCIAL FIREARM	2	2	0	1	0	0	0	0	0	0	0	0	1	0	0	6
Weapon	WCK COMMERCIAL KNIFE	0	0	0	0	0	0	1	0	0	0	0	1	1	0	2	5
Weapon	WEB EXPLOSIVE	0	0	0	0	0	0	0	0	0	0	0	0	0	0	0	0
Weapon	WEX EXPLOSIVE-SIGNIF AMT	0	0	0	0	0	0	0	0	0	0	0	0	0	0	0	0
Weapon	WHF HOMEMADE FIREARM	0	0	0	0	0	0	0	0	0	0	0	0	0	0	0	0
Weapon	WHK HOMEMADE KNIFE	0	0	14	5	2	3	80	111	31	5	1	79	89	129	87	636
Weapon	WOT OTHER	3	4	3	4	2	1	4	3	0	1	7	3	6	5	3	49
Weapon	WPC CLUB	0	0	1	0	0	0	2	0	1	0	0	0	0	2	0	7
Weapon	WRM RAW MATERIALS	0	7	3	7	0	1	17	6	3	0	4	7	0	16	4	75
Weapon	WTA CLASS A TOOL	0	0	1	2	0	0	1	0	0	1	0	0	0	1	0	6
Weapon	WTB CLASS B TOOL	0	0	0	0	0	0	0	0	0	0	0	1	0	0	0	1
Summary																	
TOTAL-VIOLENT		54	50	146	324	24	46	94	125	67	30	43	159	148	179	154	1,643
*TOTAL - NON-VIOLENT		249	408	626	519	613	480	1,191	1,753	897	582	309	1,356	1,190	1,692	1,000	12,865
TOTAL		303	458	772	843	637	526	1,285	1,878	964	612	352	1,515	1,338	1,871	1,154	14,508
Rate per 100 - Violent		13.35	6.78	20.99	45.49	2.58	4.48	6.15	7.68	3.79	2.60	11.06	6.47	7.54	7.78	10.34	8.57
Rate per 100 - Non-Violent		61.54	55.35	89.99	72.87	65.99	46.77	77.86	107.65	50.74	37.50	79.49	55.20	60.64	73.57	67.15	67.08
Rate per 100 - Total		74.89	62.14	110.97	118.36	68.57	51.25	84.01	115.33	54.53	53.13	90.55	61.68	68.18	81.36	77.49	75.64

WWW.TN.GOV/CORRECTION

TENNESSEE DEPARTMENT OF CORRECTION
RACHEL JACKSON BUILDING
320 SIXTH AVENUE NORTH
NASHVILLE, TN 37243
615-741-1000

