

Tennessee Felon Population Update

July 2007

Prepared By:

**Tennessee Department of Correction
Policy, Planning, and Research Section**

TENNESSEE FELON POPULATION UPDATE
TABLE OF CONTENTS
July 2007

Felon Population by Primary Offense Fiscal Year 2002/2003 to Present	1
Felon Population Projections vs. Actual Graph July 2004 to Present	2
Felon Inmate Population Projections vs. Actual Fiscal Year 2006/2007 to Present	3
Incarcerated Felon Population Fiscal Year 2002/2003 to Present	4
Incarcerated Felon Populations Fiscal Year 1995/1996 - 2006/2007	5
Local Jail Populations by Category Fiscal Years 2006/2007 to Present	6
Felon Admissions in Tennessee Fiscal Year 2007/2008	7
Felon Admissions in Tennessee Fiscal Year 2006/2007	8
Felon Admissions in Tennessee Fiscal Years 1996/1997 - 2006/2007	9
Felon Releases in Tennessee Fiscal Year 2007/2008	10
Felon Releases in Tennessee Fiscal Year 2006/2007	11
Felon Releases in Tennessee Fiscal Years 1996/1997 - 2006/2007	12
Projected Felon Admissions vs. Actual Fiscal Year 2006/2007 - 2007/2008	13
Projected Felon Releases Vs. Actual Fiscal Year 2006/2007 - 2007/2008	14
Community Services Population Fiscal Years 2001/2002 to Present	15
Community Services Projections Vs. Actual July 2006 to Present	16
Community Services Population Fiscal Years 1995/1996 - 2006/2007	17
Parole Grant Rates in Tennessee Fiscal Years 2002/2003 to Present	18
Parole Population Fiscal Years 2002/2003 to Present	19
Parole Population Projections vs. Actual Graph Fiscal Year 2005/2006 to Present	20

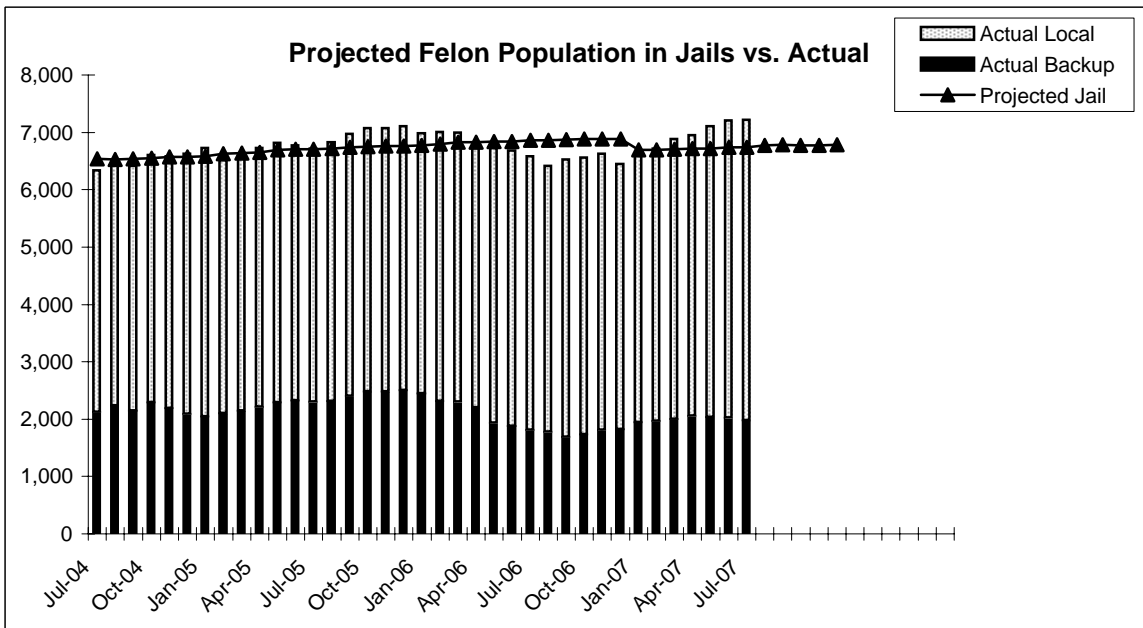
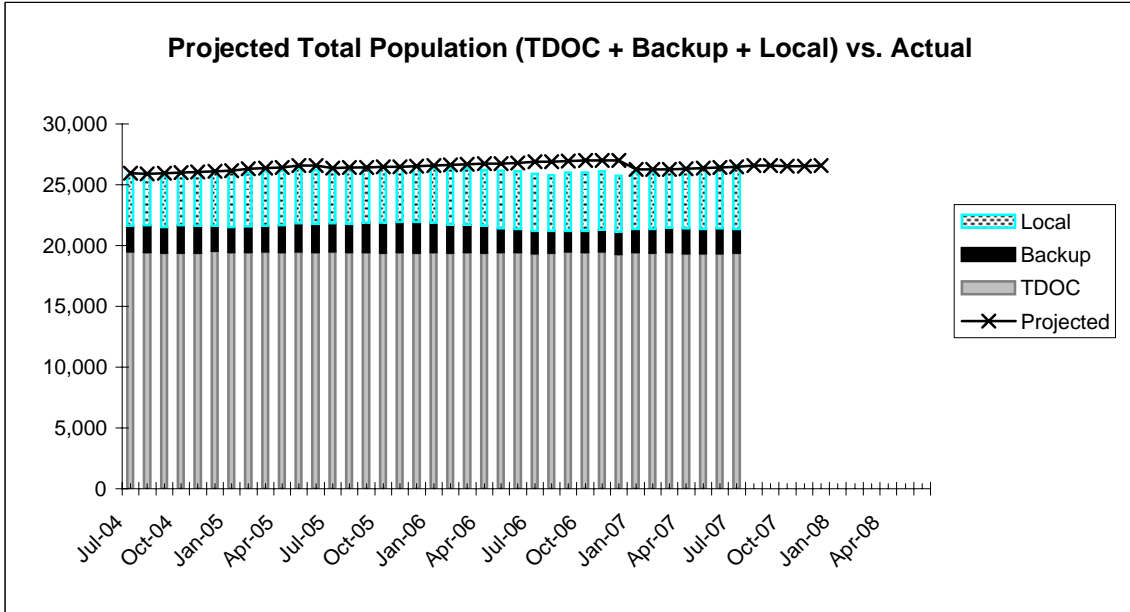
**TDOC POPULATION BY PRIMARY OFFENSE
AS OF June 30, 2007****

	TOTAL POP.	Monthly Change	Homicide	% OF TOTAL	Monthly Change	Kidnap	% OF TOTAL	Monthly Change	Sex Ofnder	% OF TOTAL	Monthly Change	Robbery	% OF TOTAL	Monthly Change	**Property	% OF TOTAL	Monthly Change	Assault	% OF TOTAL	Monthly Change	Drugs	% OF TOTAL	Monthly Change	Other	% OF TOTAL	Monthly Change	
Averages																											
FY 02/03	18,297	0.7%	3,474	18.9%		253	1.4%		2,739	14.9%		3,221	17.5%		2,999	16.3%		2,073	11.2%		2,320	12.6%		1,218	6.6%		
FY 03/04	19,213	0.4%	3,503	18.1%		247	1.3%		2,786	14.4%		3,348	17.3%		3,240	16.7%		2,170	11.2%		2,595	13.4%		1,324	6.8%		
FY 04/05	19,263	0.0%	3,543	18.4%		249	1.3%		2,797	14.5%		3,320	17.2%		3,144	16.3%		2,195	11.4%		2,682	13.9%		1,332	6.9%		
FY 05/06	19,248	0.0%	3,574	18.6%		242	1.3%		2,802	14.6%		3,164	16.4%		3,127	16.2%		2,187	11.4%		2,805	14.6%		1,347	7.0%		
2006/2007																											
JUL	19,195		3,573	18.6%		232	1.2%		2,815	14.7%		3,027	15.8%		3,150	16.4%		2,144	11.2%		2,889	15.1%		1,365	7.1%		
AUG	19,202	0.0%	3,572	18.6%	0.0%	231	1.2%	-0.4%	2,828	14.7%	0.5%	3,013	15.7%	-0.5%	3,149	16.4%	0.0%	2,168	11.3%	1.1%	2,868	14.9%	-0.7%	1,373	7.2%	0.6%	
SEP	19,326	0.6%	3,584	18.5%	0.3%	226	1.2%	-2.2%	2,830	14.6%	0.1%	2,999	15.5%	-0.5%	3,187	16.5%	1.2%	2,184	11.3%	0.7%	2,909	15.1%	1.4%	1,407	7.3%	2.5%	
OCT	19,267	-0.3%	3,574	18.5%	-0.3%	226	1.2%	0.0%	2,819	14.6%	-0.4%	2,978	15.5%	-0.7%	3,191	16.6%	0.1%	2,176	11.3%	-0.4%	2,921	15.2%	0.4%	1,382	7.2%	-1.8%	
NOV	19,286	0.1%	3,582	18.6%	0.2%	224	1.2%	-0.9%	2,823	14.6%	0.1%	2,961	15.4%	-0.6%	3,187	16.5%	-0.1%	2,177	11.3%	0.0%	2,933	15.2%	0.4%	1,399	7.3%	1.2%	
DEC	19,178	-0.6%	3,580	18.7%	-0.1%	225	1.2%	0.4%	2,820	14.7%	-0.1%	2,940	15.3%	-0.7%	3,125	16.3%	-1.9%	2,179	11.4%	0.1%	2,916	15.2%	-0.6%	1,393	7.3%	-0.4%	
JAN	19,244	0.3%	3,593	18.7%	0.4%	224	1.2%	-0.4%	2,818	14.6%	-0.1%	2,945	15.3%	0.2%	3,138	16.3%	0.4%	2,163	11.2%	-0.7%	2,969	15.4%	1.8%	1,394	7.2%	0.1%	
FEB	19,196	-0.2%	3,596	18.7%	0.1%	222	1.2%	-0.9%	2,811	14.6%	-0.2%	2,945	15.3%	0.0%	3,101	16.2%	-1.2%	2,175	11.3%	0.6%	2,953	15.4%	-0.5%	1,393	7.3%	-0.1%	
MAR	19,244	0.3%	3,606	18.7%	0.3%	225	1.2%	1.4%	2,819	14.6%	0.3%	2,937	15.3%	-0.3%	3,134	16.3%	1.1%	2,165	11.3%	-0.5%	2,972	15.4%	0.6%	1,386	7.2%	-0.5%	
APR	19,132	-0.6%	3,616	18.9%	0.3%	230	1.2%	2.2%	2,796	14.6%	-0.8%	2,898	15.1%	-1.3%	3,110	16.3%	-0.8%	2,140	11.2%	-1.2%	2,940	15.4%	-1.1%	1,402	7.3%	1.2%	
MAY	19,141	0.0%	3,621	18.9%	0.1%	230	1.2%	0.0%	2,798	14.6%	0.1%	2,905	15.2%	0.2%	3,095	16.2%	-0.5%	2,150	11.2%	0.5%	2,949	15.4%	0.3%	1,393	7.3%	-0.6%	
JUN	19,180	0.2%	3,617	18.9%	-0.1%	234	1.2%	1.7%	2,803	14.6%	0.2%	2,917	15.2%	0.4%	3,117	16.3%	0.7%	2,146	11.2%	-0.2%	2,945	15.4%	-0.1%	1,401	7.3%	0.6%	
FY AVG	19,216	0.0%	3,593	18.7%	0.1%	227	1.2%	0.1%	2,815	14.6%	0.0%	2,955	15.4%	-0.3%	3,140	16.3%	-0.1%	2,164	11.3%	0.0%	2,930	15.2%	0.2%	1,391	7.2%	0.2%	
2007/2008																											
JUL																											
AUG																											
SEP																											
OCT																											
NOV																											
DEC																											
JAN																											
FEB																											
MAR																											
APR																											
MAY																											
JUN																											
FY AVG																											

**All Primary Offense information is reported one month in arrears.

***Excludes Robbery (Prior to September 2000, these offenses only included Theft, Stolen Property and Burglary - now includes All Property except Robbery).

PROJECTED POPULATION VS. ACTUAL JULY 2004 TO PRESENT



Projections Updated January 2007

**INCARCERATED FELON POPULATION
PROJECTIONS VS. ACTUAL
AS OF July 31, 2007**

2006/2007	PROJECTED	ACTUAL	DIFF	% DIFF
JULY	26,900	25,918	982	3.8%
AUGUST	26,901	25,792	1,109	4.3%
SEPTEMBER	26,946	26,015	931	3.6%
OCTOBER	26,979	25,993	986	3.8%
NOVEMBER	26,984	26,084	900	3.5%
DECEMBER	26,998	25,733	1,265	4.9%
JANUARY	26,246	26,006	240	0.9%
FEBRUARY	26,265	26,064	201	0.8%
MARCH	26,284	26,334	-50	-0.2%
APRIL	26,319	26,297	22	0.1%
MAY	26,349	26,413	-64	-0.2%
JUNE	26,415	26,551	-136	-0.5%
FY AVERAGE	26,632	26,100	532	2.1%

2007/2008	PROJECTED	ACTUAL	DIFF	% DIFF
JULY	26,450	26,573	-123	-0.5%
AUGUST	26,579			
SEPTEMBER	26,595			
OCTOBER	26,548			
NOVEMBER	26,544			
DECEMBER	26,590			
JANUARY	26,626			
FEBRUARY	26,653			
MARCH	26,721			*
APRIL	26,765			
MAY	26,814			
JUNE	26,793			
FY AVERAGE	26,640	26,573	-123	-0.5%

*These tables compare the accuracy of the projection model by comparing the projected population to the actual population. Months in which the projected population is less than the actual population will be represented with a negative sign.

NOTE: Projections were updated January 2007.
Averages are column averages.

INCARCERATED FELON POPULATION AS OF July 31, 2007

	Total Felon Population (A+B+C)	Monthly Change	Monthly Percent Change	TDOD Facilities (A)	Percent of Total	TDOD Backup (B)	Percent of Total	Locally Sentenced (C)	Percent of Total	Local Jail Total (B+C)
FY AVG.										
2002/2003	24,913	103	1.0%	18,436	74.0%	2,313	9.3%	4,164	16.7%	6,477
2003/2004	25,635	33	0.1%	19,404	75.7%	2,021	7.9%	4,210	16.4%	6,231
2004/2005	26,035	26	0.1%	19,431	74.6%	2,180	8.4%	4,425	17.0%	6,605

2005-06

JULY	26,187	-22	-0.1%	19,469	74.3%	2,300	8.8%	4,418	16.9%	6,718
AUGUST	26,263	76	0.3%	19,431	74.0%	2,306	8.8%	4,526	17.2%	6,832
SEPTEMBER	26,400	137	0.5%	19,423	73.6%	2,401	9.1%	4,576	17.3%	6,977
OCTOBER	26,429	29	0.1%	19,353	73.2%	2,473	9.4%	4,603	17.4%	7,076
NOVEMBER	26,504	75	0.3%	19,435	73.3%	2,478	9.3%	4,591	17.3%	7,069
DECEMBER	26,495	-9	0.0%	19,383	73.2%	2,498	9.4%	4,614	17.4%	7,112
JANUARY	26,380	-115	-0.4%	19,395	73.5%	2,448	9.3%	4,537	17.2%	6,985
FEBRUARY	26,367	-13	0.0%	19,355	73.4%	2,306	8.7%	4,706	17.8%	7,012
MARCH	26,394	27	0.1%	19,403	73.5%	2,303	8.7%	4,688	17.8%	6,991
APRIL	26,197	-197	-0.7%	19,379	74.0%	2,195	8.4%	4,623	17.6%	6,818
MAY	26,148	-49	-0.2%	19,419	74.3%	1,934	7.4%	4,795	18.3%	6,729
JUNE	26,110	-38	-0.1%	19,429	74.4%	1,874	7.2%	4,807	18.4%	6,681
FY Average	26,323	-8	0.0%	19,406	73.7%	2,293	8.7%	4,624	17.6%	6,917

2006/2007

JULY	25,918	-192	-0.7%	19,331	74.6%	1,809	7.0%	4,778	18.4%	6,587
AUGUST	25,792	-126	-0.5%	19,377	75.1%	1,772	6.9%	4,643	18.0%	6,415
SEPTEMBER	26,015	223	0.9%	19,490	74.9%	1,685	6.5%	4,840	18.6%	6,525
OCTOBER	25,993	-22	-0.1%	19,432	74.8%	1,725	6.6%	4,836	18.6%	6,561
NOVEMBER	26,084	91	0.4%	19,458	74.6%	1,813	7.0%	4,813	18.5%	6,626
DECEMBER	25,733	-351	-1.3%	19,282	74.9%	1,817	7.1%	4,634	18.0%	6,451
JANUARY	26,006	273	1.1%	19,396	74.6%	1,946	7.5%	4,664	17.9%	6,610
FEBRUARY	26,064	58	0.2%	19,344	74.2%	1,963	7.5%	4,757	18.3%	6,720
MARCH	26,334	270	1.0%	19,445	73.8%	1,993	7.6%	4,896	18.6%	6,889
APRIL	26,297	-37	-0.1%	19,342	73.6%	2,048	7.8%	4,907	18.7%	6,955
MAY	26,413	116	0.4%	19,304	73.1%	2,029	7.7%	5,080	19.2%	7,109
JUNE	26,551	138	0.5%	19,341	72.8%	2,023	7.6%	5,187	19.5%	7,210
FY Average	26,100	37	0.0%	19,379	74.3%	1,885	7.2%	4,836	18.5%	6,722

2007/2008

JULY	26,573	22	0.1%	19,354	72.8%	1,974	7.4%	5,245	19.7%	7,219
AUGUST										
SEPTEMBER										
OCTOBER										
NOVEMBER										
DECEMBER										
JANUARY										
FEBRUARY										
MARCH										
APRIL										
MAY										
JUNE										
FY Average	26,573	22	0.1%	19,354	72.8%	1,974	7.4%	5,245	19.7%	7,219

Population figures on each year summary line are monthly averages. Monthly change and percent change are calculated from the first month of the year to the last month of the year.

INCARCERATED FELON POPULATION TOTALS AT FISCAL YEAR END (JUNE 30) FY 1995/96 - FY 2006/07

	TOTAL FELON POP. (A+B+C)	TOTAL CHANGE	PERCENT CHANGE	TDOC FACILITIES (A)	PERCENT OF TOTAL	TDOC BACKUP (B)	PERCENT OF TOTAL	LOCALLY SENTENCED (C)	PERCENT OF TOTAL	LOCAL JAIL TOTAL (B+C)
1995-96	18,922	622	8.4%	13,612	71.9%	2,029	10.7%	3,281	17.3%	5,310
1996-97	19,606	684	3.6%	14,218	72.5%	1,817	9.3%	3,571	18.2%	5,388
1997-98	21,286	1,680	8.6%	15,640	73.5%	2,103	9.9%	3,543	16.6%	5,646
1998-99	22,287	1,001	4.7%	16,577	74.4%	1,846	8.3%	3,864	17.3%	5,710
1999-00	22,539	252	1.1%	16,824	74.6%	1,957	8.7%	3,758	16.7%	5,715
2000-01	23,062	523	2.3%	17,459	75.7%	1,901	8.2%	3,702	16.1%	5,603
2001-02	24,235	1,173	5.1%	17,715	73.1%	2,505	10.3%	4,015	16.6%	6,520
2006-03	25,469	1,234	5.1%	19,408	76.2%	1,956	7.7%	4,105	16.1%	6,061
2003-04	25,865	396	1.6%	19,408	75.0%	2,110	8.2%	4,347	16.8%	6,457
2004-05	26,209	344	1.3%	19,432	74.1%	2,321	8.9%	4,456	17.0%	6,777
2005-06	26,110	-99	-0.4%	19,429	74.4%	1,874	7.2%	4,807	18.4%	6,681
2006-07	26,551	441	1.7%	19,341	72.8%	2,023	7.6%	5,187	19.5%	7,210

INCARCERATED FELON POPULATIONS AVERAGES FY 1995/96 - FY 2006/07

	AVG. TOTAL FELON POP. (A+B+C)	ANNUAL CHANGE	PERCENT CHANGE	TDOC FACILITIES (A)	PERCENT OF TOTAL	TDOC BACKUP (B)	PERCENT OF TOTAL	LOCALLY SENTENCED (C)	PERCENT OF TOTAL	LOCAL JAIL TOTAL (B+C)
1995-96	18,694	945	8.2%	13,302	71.2%	2,042	10.9%	3,350	17.9%	5,392
1996-97	19,163	469	2.5%	13,815	72.1%	1,904	9.9%	3,444	18.0%	5,348
1997-98	20,401	1,238	6.5%	15,269	74.8%	1,617	7.9%	3,515	17.2%	5,132
1998-99	21,632	1,231	6.0%	15,933	73.7%	1,941	9.0%	3,758	17.4%	5,699
1999-00	22,608	976	4.5%	16,764	74.2%	1,927	8.5%	3,917	17.3%	5,844
2000-01	22,625	17	0.1%	17,140	75.8%	1,742	7.7%	3,743	16.5%	5,485
2001-02	23,891	1,266	5.6%	17,611	73.7%	2,143	9.0%	4,137	17.3%	6,280
2006-03	24,913	1,022	4.3%	18,436	74.0%	2,313	9.3%	4,164	16.7%	6,477
2003-04	25,635	722	2.9%	19,404	75.7%	2,021	7.9%	4,210	16.4%	6,231
2004-05	26,036	401	1.6%	19,431	74.6%	2,180	8.4%	4,425	17.0%	6,605
2005-06	26,323	287	1.1%	19,406	73.7%	2,293	8.7%	4,624	17.6%	6,917
2006-07	26,100	-223	-0.8%	19,379	74.2%	1,885	7.2%	4,836	18.5%	6,722

NOTE: FISCAL YEAR AVERAGES

LOCAL JAIL POPULATIONS AS OF July 31, 2007

(Source: TDOC's Jail Summary Report)

	Total Jail Pop.	Monthly Change	% Change	Total TDOC Inmates	Local Felons	Federal & Others	Other Convicted Felons	Convicted Misdem.	Total Pre-trial Detainees	% TDOC Felons	% Local Felons	% Federal & Others	% Other Conv. Felons	% Conv. Misdem.	% Pre-trial Detainees
2006/2007															
JULY	24,516	114	1.7%	1,809	4,778	502	770	5,418	11,239	7%	19%	2%	3%	22%	46%
AUGUST	24,555	39	0.2%	1,772	4,643	849	798	5,262	11,231	7%	19%	3%	3%	21%	46%
SEPTEMBER	24,777	222	0.9%	1,685	4,840	722	774	5,349	11,407	7%	20%	3%	3%	22%	46%
OCTOBER	24,666	-111	-0.4%	1,725	4,836	799	816	5,065	11,425	7%	20%	3%	3%	21%	46%
NOVEMBER	24,352	-314	-1.3%	1,813	4,813	545	824	4,814	11,543	7%	20%	2%	3%	20%	47%
DECEMBER	23,474	-878	-3.6%	1,817	4,634	513	775	4,610	11,125	8%	20%	2%	3%	20%	47%
JANUARY	24,144	670	2.9%	1,946	4,664	814	818	5,122	10,780	8%	19%	3%	3%	21%	45%
FEBRUARY	23,959	-185	-0.8%	1,963	4,757	812	905	4,970	10,552	8%	20%	3%	4%	21%	44%
MARCH	25,079	1,120	4.7%	1,993	4,896	860	913	5,433	10,984	8%	20%	3%	4%	22%	44%
APRIL	25,038	-41	-0.2%	2,048	4,907	803	954	5,171	11,155	8%	20%	3%	4%	21%	45%
MAY	25,132	94	0.4%	2,029	5,080	867	818	5,208	11,130	8%	20%	3%	3%	21%	44%
JUNE	25,661	529	2.1%	2,023	5,187	851	798	5,580	11,222	8%	20%	3%	3%	22%	44%
2006/2007 AVERAGE	24,613			1,885	4,836	745	830	5,167	11,149	8%	20%	3%	3%	21%	45%

	Total Jail Pop.	Monthly Change	% Change	Total TDOC Inmates	Local Felons	Federal & Others	Other Convicted Felons	Convicted Misdem.	Total Pre-trial Detainees	% TDOC Felons	% Local Felons	% Federal & Others	% Other Conv. Felons	% Conv. Misdem.	% Pre-trial Detainees
2007/2008															
JULY	25,594	-67	-0.3%	1,974	5,245	834	797	5,310	11,434	8%	20%	3%	3%	21%	45%
AUGUST															
SEPTEMBER															
OCTOBER															
NOVEMBER															
DECEMBER															
JANUARY															
FEBRUARY															
MARCH															
APRIL															
MAY															
JUNE															
2007/2008 AVERAGE	25,594			1,974	5,245	834	797	5,310	11,434	8%	20%	3%	3%	21%	45%

FELON ADMISSIONS IN TENNESSEE FISCAL YEAR 2007/2008

TOTAL ADMISSIONS	PERCENT CHANGE	NEW COMMITS	PERCENT OF TOTAL	VIOLATORS RETURNED	PERCENT OF TOTAL	ESCAPEES & OTHERS	PERCENT OF TOTAL
------------------	----------------	-------------	------------------	--------------------	------------------	-------------------	------------------

2007/2008

TDOC

JULY	702	415	59.1%	281	40.0%	6	0.9%
AUGUST							
SEPTEMBER							
OCTOBER							
NOVEMBER							
DECEMBER							
JANUARY							
FEBRUARY							
MARCH							
APRIL							
MAY							
JUNE							
TOTAL	702	415	59.1%	281	40.0%	6	0.9%

2007/2008

LOCALLY SENTENCED

JULY	254	150	59.1%	103	40.6%	1	0.4%
AUGUST							
SEPTEMBER							
OCTOBER							
NOVEMBER							
DECEMBER							
JANUARY							
FEBRUARY							
MARCH							
APRIL							
MAY							
JUNE							
TOTAL	254	150	59.1%	103	40.6%	1	0.4%

2007/2008

SYSTEM TOTAL

JULY	956	565	59.1%	384	40.2%	7	0.7%
AUGUST							
SEPTEMBER							
OCTOBER							
NOVEMBER							
DECEMBER							
JANUARY							
FEBRUARY							
MARCH							
APRIL							
MAY							
JUNE							
TOTAL	956	565	59.1%	384	40.2%	7	0.7%

Admission statistics are incomplete because all data are not received by TDOC immediately after sentencing. In some cases information is not received until several months after sentencing; therefore, the numbers for any given month may be different from the previous month's report.

FELON ADMISSIONS IN TENNESSEE FISCAL YEAR 2006/2007

TOTAL ADMISSIONS	PERCENT CHANGE	NEW COMMITTS	PERCENT OF TOTAL	VIOLATORS RETURNED	PERCENT OF TOTAL	ESCAPEES & OTHERS	PERCENT OF TOTAL
---------------------	-------------------	-----------------	---------------------	-----------------------	---------------------	----------------------	---------------------

TDOC

JULY	805		434	53.9%	365	45.3%	6	0.7%
AUGUST	952	18.3%	526	55.3%	419	44.0%	7	0.7%
SEPTEMBER	892	-6.3%	511	57.3%	376	42.2%	5	0.6%
OCTOBER	925	3.7%	514	55.6%	400	43.2%	11	1.2%
NOVEMBER	884	-4.4%	478	54.1%	395	44.7%	11	1.2%
DECEMBER	717	-18.9%	388	54.1%	318	44.4%	11	1.5%
JANUARY	944	31.7%	545	57.7%	390	41.3%	9	1.0%
FEBRUARY	891	-5.6%	474	53.2%	402	45.1%	15	1.7%
MARCH	951	6.7%	543	57.1%	391	41.1%	17	1.8%
APRIL	957	0.6%	540	56.4%	402	42.0%	15	1.6%
MAY	929	-2.9%	551	59.3%	370	39.8%	8	0.9%
JUNE	771	-17.0%	454	58.9%	308	39.9%	9	1.2%
TOTAL	10,618		5,958	56.1%	4,536	42.7%	124	1.2%

LOCALLY SENTENCED

JULY	261		168	64.4%	90	34.5%	3	1.1%
AUGUST	309	18.4%	188	60.8%	120	38.8%	1	0.3%
SEPTEMBER	296	-4.2%	183	61.8%	112	37.8%	1	0.3%
OCTOBER	337	13.9%	217	64.4%	118	35.0%	2	0.6%
NOVEMBER	340	0.9%	195	57.4%	144	42.4%	1	0.3%
DECEMBER	250	-26.5%	170	68.0%	80	32.0%	0	0.0%
JANUARY	408	63.2%	272	66.7%	136	33.3%	0	0.0%
FEBRUARY	274	-32.8%	167	60.9%	106	38.7%	1	0.4%
MARCH	317	15.7%	189	59.6%	127	40.1%	1	0.3%
APRIL	332	4.7%	204	61.4%	127	38.3%	1	0.3%
MAY	391	17.8%	244	62.4%	146	37.3%	1	0.3%
JUNE	289	-26.1%	188	65.1%	99	34.3%	2	0.7%
TOTAL	3,804		2,385	62.7%	1,405	36.9%	14	0.4%

SYSTEM TOTAL

JULY	1,066		602	56.5%	455	42.7%	9	0.8%
AUGUST	1,261	18.3%	714	56.6%	539	42.7%	8	0.6%
SEPTEMBER	1,188	-5.8%	694	58.4%	488	41.1%	6	0.5%
OCTOBER	1,262	6.2%	731	57.9%	518	41.0%	13	1.0%
NOVEMBER	1,224	-3.0%	673	55.0%	539	44.0%	12	1.0%
DECEMBER	967	-21.0%	558	57.7%	398	41.2%	11	1.1%
JANUARY	1,352	39.8%	817	60.4%	526	38.9%	9	0.7%
FEBRUARY	1,165	-13.8%	641	55.0%	508	43.6%	16	1.4%
MARCH	1,268	8.8%	732	57.7%	518	40.9%	18	1.4%
APRIL	1,289	1.7%	744	57.7%	529	41.0%	16	1.2%
MAY	1,320	2.4%	795	60.2%	516	39.1%	9	0.7%
JUNE	1,060	-19.7%	642	60.6%	407	38.4%	11	1.0%
TOTAL	14,422		8,343	57.8%	5,941	41.2%	138	1.0%

Admission statistics are incomplete because all data are not received by TDOC immediately after sentencing. In some cases information is not received until several months after sentencing; therefore, the numbers for any given month may be different from the previous month's report.

**FELON ADMISSIONS IN TENNESSEE
FISCAL YEARS 1996/97 - 2006/07**

TOTAL ADMISSIONS	PERCENT CHANGE	NEW COMMITS	PERCENT OF TOTAL	VIOLATORS RETURNED	PERCENT OF TOTAL	ESCAPEES & OTHERS	PERCENT OF TOTAL
------------------	----------------	-------------	------------------	--------------------	------------------	-------------------	------------------

TDOC								
1996-97	7,458	3.3%	3,993	53.5%	3,368	45.2%	97	1.3%
1997-98	8,660	16.1%	4,837	55.9%	3,719	42.9%	104	1.2%
1998-99	8,452	-2.4%	4,905	58.0%	3,464	41.0%	83	1.0%
1999-00	8,694	2.9%	5,249	60.4%	3,350	38.5%	95	1.1%
2000-01	9,037	3.9%	5,381	59.5%	3,514	38.9%	142	1.6%
2001-02	9,608	6.3%	5,644	58.7%	3,848	40.0%	116	1.2%
2002-03	9,529	-0.8%	5,658	59.4%	3,769	39.6%	102	1.1%
2003-04	10,262	7.7%	6,086	59.3%	4,047	39.4%	129	1.3%
2004-05	10,417	1.5%	6,027	57.9%	4,275	41.0%	115	1.1%
2005-06	10,913	1.5%	6,299	57.9%	4,492	41.0%	122	1.1%
2006-07	10,618	-2.7%	5,958	56.1%	4,536	42.7%	124	1.2%

LOCALLY SENTENCED								
1996-97	5,108	7.6%	3,649	71.4%	1,394	27.3%	65	1.3%
1997-98	4,941	-3.3%	3,447	69.8%	1,434	29.0%	60	1.2%
1998-99	4,721	-4.5%	3,202	67.8%	1,490	31.6%	29	0.6%
1999-00	4,756	0.7%	3,510	73.8%	1,224	25.7%	22	0.5%
2000-01	4,405	-7.4%	2,982	67.7%	1,388	31.5%	35	0.8%
2001-02	4,022	-8.7%	2,693	67.0%	1,307	32.5%	22	0.5%
2002-03	3,733	-7.2%	2,405	64.4%	1,308	35.0%	20	0.5%
2003-04	3,582	-4.0%	2,350	65.6%	1,214	33.9%	18	0.5%
2004-05	3,759	4.9%	2,413	64.2%	1,327	35.3%	19	0.5%
2005-06	3,638	4.9%	2,321	64.2%	1,296	35.3%	21	0.5%
2006-07	3,804	4.6%	2,385	62.7%	1,405	36.9%	14	0.4%

SYSTEM TOTAL								
1996-97	12,566	4.9%	7,642	60.8%	4,762	37.9%	162	1.3%
1997-98	13,601	8.2%	8,284	60.9%	5,153	37.9%	164	1.2%
1998-99	13,173	-3.1%	8,107	61.5%	4,954	37.6%	112	0.9%
1999-00	13,450	2.1%	8,759	65.1%	4,574	34.0%	117	0.9%
2000-01	13,442	-0.1%	8,363	62.2%	4,902	36.5%	177	1.3%
2001-02	13,630	1.4%	8,337	61.2%	5,155	37.8%	138	1.0%
2002-03	13,262	-2.7%	8,063	60.8%	5,077	38.3%	122	0.9%
2003-04	13,844	4.4%	8,436	60.9%	5,261	38.0%	147	1.1%
2004-05	14,176	2.4%	8,440	59.5%	5,602	39.5%	134	0.9%
2005-06	14,551	2.4%	8,620	59.5%	5,788	39.5%	143	0.9%
2006-07	14,422	-0.9%	8,343	57.8%	5,941	41.2%	138	1.0%

FELON RELEASES IN TENNESSEE FISCAL YEAR 2007/2008

TOTAL RELEASES	PERCENT CHANGE	PAROLE	PERCENT OF TOTAL	PROBATION COM. COR.	PERCENT OF TOTAL	EXPIRATION & OTHERS	PERCENT OF TOTAL
----------------	----------------	--------	------------------	---------------------	------------------	---------------------	------------------

TDOC

JULY	601		308	51.2%	66	11.0%	227	37.8%
AUGUST								
SEPTEMBER								
OCTOBER								
NOVEMBER								
DECEMBER								
JANUARY								
FEBRUARY								
MARCH								
APRIL								
MAY								
JUNE								
TOTAL	601		308	51.2%	66	11.0%	227	37.8%

TDOC BACKUP

JULY	373		43	11.5%	226	60.6%	104	27.9%
AUGUST								
SEPTEMBER								
OCTOBER								
NOVEMBER								
DECEMBER								
JANUARY								
FEBRUARY								
MARCH								
APRIL								
MAY								
JUNE								
TOTAL	373		43	11.5%	226	60.6%	104	27.9%

LOCALLY SENTENCED

JULY	282		24	8.5%	158	56.0%	100	35.5%
AUGUST								
SEPTEMBER								
OCTOBER								
NOVEMBER								
DECEMBER								
JANUARY								
FEBRUARY								
MARCH								
APRIL								
MAY								
JUNE								
TOTAL	282		24	8.5%	158	56.0%	100	35.5%

SYSTEM TOTAL

JULY	1,256		375	29.9%	450	35.8%	431	34.3%
AUGUST								
SEPTEMBER								
OCTOBER								
NOVEMBER								
DECEMBER								
JANUARY								
FEBRUARY								
MARCH								
APRIL								
MAY								
JUNE								
TOTAL	1,256		375	29.9%	450	35.8%	431	34.3%

Release statistics are incomplete because all data are not received by TDOC immediately after inmates are released. Therefore, the numbers for any given month may be different from the previous month's report.

FELON RELEASES IN TENNESSEE FISCAL YEAR 2006/2007

TOTAL RELEASES	PERCENT CHANGE	PAROLE	PERCENT OF TOTAL	PROBATION COM. COR.	PERCENT OF TOTAL	EXPIRATION & OTHERS	PERCENT OF TOTAL
----------------	----------------	--------	------------------	---------------------	------------------	---------------------	------------------

TDOC

JULY	592		282	47.6%	87	14.7%	223	37.7%
AUGUST	636	7.4%	346	54.4%	78	12.3%	212	33.3%
SEPTEMBER	507	-20.3%	252	49.7%	55	10.8%	200	39.4%
OCTOBER	608	19.9%	319	52.5%	92	15.1%	197	32.4%
NOVEMBER	471	-22.5%	228	48.4%	66	14.0%	177	37.6%
DECEMBER	528	12.1%	260	49.2%	74	14.0%	194	36.7%
JANUARY	572	8.3%	280	49.0%	80	14.0%	212	37.1%
FEBRUARY	498	-12.9%	249	50.0%	60	12.0%	189	38.0%
MARCH	516	3.6%	285	55.2%	52	10.1%	179	34.7%
APRIL	552	7.0%	278	50.4%	56	10.1%	218	39.5%
MAY	648	17.4%	339	52.3%	89	13.7%	220	34.0%
JUNE	513	-20.8%	275	53.6%	50	9.7%	188	36.6%
TOTAL	6,641		3,393	51.1%	839	12.6%	2,409	36.3%

TDOC BACKUP

JULY	433		44	10.2%	273	63.0%	116	26.8%
AUGUST	495	14.3%	59	11.9%	330	66.7%	106	21.4%
SEPTEMBER	445	-10.1%	47	10.6%	277	62.2%	121	27.2%
OCTOBER	460	3.4%	61	13.3%	265	57.6%	134	29.1%
NOVEMBER	428	-7.0%	42	9.8%	267	62.4%	119	27.8%
DECEMBER	451	5.4%	46	10.2%	288	63.9%	117	25.9%
JANUARY	430	-4.7%	49	11.4%	266	61.9%	115	26.7%
FEBRUARY	392	-8.8%	46	11.7%	226	57.7%	120	30.6%
MARCH	429	9.4%	53	12.4%	243	56.6%	133	31.0%
APRIL	492	14.7%	45	9.1%	311	63.2%	136	27.6%
MAY	413	-16.1%	50	12.1%	254	61.5%	109	26.4%
JUNE	401	-2.9%	45	11.2%	250	62.3%	106	26.4%
TOTAL	5,269		587	11.1%	3,250	61.7%	1,432	27.2%

LOCALLY SENTENCED

JULY	290		28	9.7%	141	48.6%	121	41.7%
AUGUST	333	14.8%	25	7.5%	175	52.6%	133	39.9%
SEPTEMBER	302	-9.3%	33	10.9%	134	44.4%	135	44.7%
OCTOBER	272	-9.9%	30	11.0%	125	46.0%	117	43.0%
NOVEMBER	261	-4.0%	28	10.7%	122	46.7%	111	42.5%
DECEMBER	290	11.1%	32	11.0%	142	49.0%	116	40.0%
JANUARY	285	-1.7%	26	9.1%	154	54.0%	105	36.8%
FEBRUARY	246	-13.7%	21	8.5%	136	55.3%	89	36.2%
MARCH	286	16.3%	23	8.0%	139	48.6%	124	43.4%
APRIL	318	11.2%	31	9.7%	178	56.0%	109	34.3%
MAY	305	-4.1%	36	11.8%	146	47.9%	123	40.3%
JUNE	278	-8.9%	38	13.7%	127	45.7%	113	40.6%
TOTAL	3,466		351	10.1%	1,719	49.6%	1,396	40.3%

SYSTEM TOTAL

JULY	1,315		354	26.9%	501	38.1%	460	35.0%
AUGUST	1,464	11.3%	430	29.4%	583	39.8%	451	30.8%
SEPTEMBER	1,254	-14.3%	332	26.5%	466	37.2%	456	36.4%
OCTOBER	1,340	6.9%	410	30.6%	482	36.0%	448	33.4%
NOVEMBER	1,160	-13.4%	298	25.7%	455	39.2%	407	35.1%
DECEMBER	1,269	9.4%	338	26.6%	504	39.7%	427	33.6%
JANUARY	1,287	1.4%	355	27.6%	500	38.9%	432	33.6%
FEBRUARY	1,136	-11.7%	316	27.8%	422	37.1%	398	35.0%
MARCH	1,231	8.4%	361	29.3%	434	35.3%	436	35.4%
APRIL	1,362	10.6%	354	26.0%	545	40.0%	463	34.0%
MAY	1,366	0.3%	425	31.1%	489	35.8%	452	33.1%
JUNE	1,192	-12.7%	358	30.0%	427	35.8%	407	34.1%
TOTAL	15,376		4,331	28.2%	5,808	37.8%	5,237	34.1%

Release statistics are incomplete because all data are not received by TDOC immediately after inmates are released. Therefore, the numbers for any given month may be different from the previous month's report.

FELON RELEASES IN TENNESSEE FISCAL YEARS 1996/97 - 2006/07

	TOTAL RELEASES	PERCENT CHANGE	PAROLE	PERCENT OF TOTAL	PROBATION COM. COR.	PERCENT OF TOTAL	EXPIRATION & OTHERS	PERCENT OF TOTAL
TDOC								
1996-97	4,424	0.0%	2,905	65.7%	381	8.6%	1,138	25.7%
1997-98	4,216	-4.7%	2,295	54.4%	563	13.4%	1,358	32.2%
1998-99	4,241	0.6%	2,270	53.5%	444	10.5%	1,527	36.0%
1999-00	4,691	10.6%	2,548	54.3%	506	10.8%	1,637	34.9%
2000-01	5,032	7.3%	2,727	54.2%	568	11.3%	1,737	34.5%
2001-02	4,553	-9.5%	2,224	48.8%	514	11.3%	1,815	39.9%
2002-03	4,842	6.3%	2,262	46.7%	603	12.5%	1,977	40.8%
2003-04	5,493	13.4%	2,552	46.5%	698	12.7%	2,243	40.8%
2004-05	5,804	5.7%	2,767	47.7%	709	12.2%	2,328	40.1%
2005-06	6,146	5.9%	3,152	51.3%	756	12.3%	2,238	36.4%
2006-07	6,641	8.1%	3,393	51.1%	839	12.6%	2,409	36.3%
TDOC BACKUP								
1996-97	3,994	39.4%	782	21.0%	2,424	58.7%	788	20.3%
1997-98	3,873	-3.0%	479	12.4%	2,582	66.7%	812	21.0%
1998-99	4,044	4.4%	484	12.0%	2,516	62.2%	1,044	25.8%
1999-00	3,933	-2.7%	546	13.9%	2,315	58.9%	1,072	27.3%
2000-01	3,917	-0.4%	486	12.4%	2,402	61.3%	1,029	26.3%
2001-02	4,212	7.5%	392	9.3%	2,677	63.6%	1,143	27.1%
2002-03	4,539	7.8%	423	9.3%	2,884	63.5%	1,232	27.1%
2003-04	4,788	5.5%	409	8.5%	3,150	65.8%	1,229	25.7%
2004-05	5,235	9.3%	485	9.3%	3,349	64.0%	1,401	26.8%
2005-06	5,913	13.0%	577	9.8%	3,721	62.9%	1,615	27.3%
2006-07	5,269	-10.9%	587	11.1%	3,250	61.7%	1,432	27.2%
LOCALLY SENTENCED								
1996-97	4,452	12.2%	894	17.3%	2,184	49.5%	1,374	33.2%
1997-98	4,535	1.9%	591	13.0%	2,412	53.2%	1,532	33.8%
1998-99	4,546	0.2%	558	12.3%	2,326	51.2%	1,662	36.6%
1999-00	4,365	-4.0%	610	14.0%	2,076	47.6%	1,679	38.5%
2000-01	3,998	-8.4%	550	13.8%	1,983	49.6%	1,465	36.6%
2001-02	3,810	-4.7%	387	10.2%	1,909	50.1%	1,514	39.7%
2002-03	3,509	-7.9%	266	7.6%	1,760	50.2%	1,483	42.3%
2003-04	3,311	-5.6%	247	7.5%	1,601	48.4%	1,463	44.2%
2004-05	3,337	0.8%	272	8.2%	1,681	50.4%	1,384	41.5%
2005-06	3,544	6.2%	278	7.8%	1,826	51.5%	1,440	40.6%
2006-07	3,466	-2.2%	351	10.1%	1,719	49.6%	1,396	40.3%
SYSTEM TOTAL								
1996-97	12,870	18.7%	4,581	31.7%	4,989	40.1%	3,300	28.1%
1997-98	12,624	-1.9%	3,365	26.7%	5,557	44.0%	3,702	29.3%
1998-99	12,831	1.6%	3,312	25.8%	5,286	41.2%	4,233	33.0%
1999-00	12,989	1.2%	3,704	28.5%	4,897	37.7%	4,388	33.8%
2000-01	12,947	-0.3%	3,763	29.1%	4,953	38.3%	4,231	32.7%
2001-02	12,575	-2.9%	3,003	23.9%	5,100	40.6%	4,472	35.6%
2002-03	12,890	2.5%	2,951	22.9%	5,247	40.7%	4,692	36.4%
2003-04	13,592	5.4%	3,208	23.6%	5,449	40.1%	4,935	36.3%
2004-05	14,376	5.8%	3,524	24.5%	5,739	39.9%	5,113	35.6%
2005-06	15,603	8.5%	4,007	25.7%	6,303	40.4%	5,293	33.9%
2006-07	15,376	-1.5%	4,331	28.2%	5,808	37.8%	5,237	34.1%

**PROJECTED FELON ADMISSIONS VS. ACTUAL
(Projections Updated January 2007)**

FY 2006/2007	NEW COMMITMENTS AND OTHERS				PAROLE/PROBATION/COM. CORR. VIOLATORS				TOTAL ADMISSIONS			
	PROJECTED	ACTUAL	DIFF	% DIFF	PROJECTED	ACTUAL	DIFF	% DIFF	PROJECTED	ACTUAL	DIFF	% DIFF
Jul-06	742	611	131	21.4%	440	455	-15	-3.3%	1,182	1,066	116	10.9%
Aug-06	707	722	-15	-2.1%	523	539	-16	-3.0%	1,230	1,261	-31	-2.5%
Sep-06	768	700	68	9.7%	464	488	-24	-4.9%	1,232	1,188	44	3.7%
Oct-06	716	744	-28	-3.8%	470	518	-48	-9.3%	1,186	1,262	-76	-6.0%
Nov-06	707	685	22	3.2%	431	539	-108	-20.0%	1,138	1,224	-86	-7.0%
Dec-06	689	569	120	21.1%	515	398	117	29.4%	1,204	967	237	24.5%
Jan-07	727	826	-99	-12.0%	479	526	-47	-8.9%	1,206	1,352	-146	-10.8%
Feb-07	702	657	45	6.8%	483	508	-25	-4.9%	1,185	1,165	20	1.7%
Mar-07	736	750	-14	-1.9%	492	518	-26	-5.0%	1,228	1,268	-40	-3.2%
Apr-07	680	760	-80	-10.5%	501	529	-28	-5.3%	1,181	1,289	-108	-8.4%
May-07	744	804	-60	-7.5%	485	516	-31	-6.0%	1,229	1,320	-91	-6.9%
Jun-07	727	653	74	11.3%	472	407	65	16.0%	1,199	1,060	139	13.1%
FY Total	8,645	8,481	164	1.9%	5,755	5,941	-186	-3.1%	14,400	14,422	-22	-0.2%
FY Avg.	720.4	706.8	13.7	3.0%	479.6	495.1	-15.5	-2.1%	1200.0	1201.8	-1.8	0.8%

NOTE: The population projection numbers for January-June 2007 admissions were previously stated incorrectly and have been corrected for the July 2007 report.

FY 2007/2008	NEW COMMITMENTS AND OTHERS				PAROLE/PROBATION/COM. CORR. VIOLATORS				TOTAL ADMISSIONS			
	PROJECTED	ACTUAL	DIFF	% DIFF	PROJECTED	ACTUAL	DIFF	% DIFF	PROJECTED	ACTUAL	DIFF	% DIFF
Jul-07	732	572	160	28.0%	516	384	132	34.4%	1,248	956	292	30.5%
Aug-07	702				508				1,210			
Sep-07	758				498				1,256			
Oct-07	706				515				1,221			
Nov-07	697				469				1,166			
Dec-07	671				436				1,107			
Jan-08	732				444				1,176			
Feb-08	706				452				1,158			
Mar-08	740				487				1,227			
Apr-08	684				476				1,160			
May-08	749				490				1,239			
Jun-08	732				512				1,244			
FY Total	8,609	572	N/A*	N/A*	5,803	384	N/A*	N/A*	14,412	956	N/A*	N/A*
FY Avg.	717.4	572.0	160.0	28.0%	483.6	384.0	132.0	34.4%	1,201	956	292	30.5%

These tables compare the accuracy of the projection model by comparing projected admissions to actual admissions. Months in which the projected admissions are less than actual admissions will be represented with a negative sign.

NOTE: The last three months of actual numbers may change due to the time delay in data entry. It takes approximately 3 to 4 months for all data in any given month to accumulate or "top out".

**PROJECTED FELON RELEASES VS. ACTUAL
(Projections Updated January 2007)**

2006/2007	PAROLEES				PROBATIONERS & COMMUNITY CORRECTIONS				DISCHARGES & OTHERS				TOTAL RELEASES			
	PROJECTED	ACTUAL	DIFF	% DIFF	PROJECTED	ACTUAL	DIFF	% DIFF	PROJECTED	ACTUAL	DIFF	% DIFF	PROJECTED	ACTUAL	DIFF	% DIFF
Jul-06	320	354	-34	-9.6%	369	501	-132	-26.3%	480	460	20	4.3%	1,169	1,315	-146	-11.1%
Aug-06	354	430	-76	-17.7%	313	583	-270	-46.3%	473	451	22	4.9%	1,140	1,464	-324	-22.1%
Sep-06	347	332	15	4.5%	292	466	-174	-37.3%	441	456	-15	-3.3%	1,080	1,254	-174	-13.9%
Oct-06	373	410	-37	-9.0%	327	482	-155	-32.2%	469	448	21	4.7%	1,169	1,340	-171	-12.8%
Nov-06	347	298	49	16.4%	287	455	-168	-36.9%	480	407	73	17.9%	1,114	1,160	-46	-4.0%
Dec-06	340	338	2	0.6%	386	504	-118	-23.4%	455	427	28	6.6%	1,181	1,269	-88	-6.9%
Jan-07	339	355	-16	-4.5%	554	500	54	10.8%	422	432	-10	-2.3%	1,315	1,287	28	2.2%
Feb-07	364	316	48	15.2%	519	422	97	23.0%	428	398	30	7.5%	1,311	1,136	175	15.4%
Mar-07	360	361	-1	-0.3%	527	434	93	21.4%	467	436	31	7.1%	1,354	1,231	123	10.0%
Apr-07	384	354	30	8.5%	486	545	-59	-10.8%	438	463	-25	-5.4%	1,308	1,362	-54	-4.0%
May-07	382	425	-43	-10.1%	517	489	28	5.7%	415	452	-37	-8.2%	1,314	1,366	-52	-3.8%
Jun-07	372	358	14	3.9%	508	427	81	19.0%	444	407	37	9.1%	1,324	1,192	132	11.1%
FY Total	4,282	4,331	-49	-1.1%	5,085	5,808	-723	-12.4%	5,412	5,237	175	3.3%	14,779	15,376	-597	-3.9%
FY Avg.	356.8	360.9	-4.1	-0.2%	423.8	484.0	-60.3	-11.1%	451.0	436.4	14.6	3.6%	1,231.6	1,281	-49.8	-3.3%

NOTE: The population projection numbers for January-June 2007 releases were previously stated incorrectly and have been corrected for the July 2007 report.

2007/2008	PAROLEES				PROBATIONERS & COMMUNITY CORRECTIONS				DISCHARGES & OTHERS				TOTAL RELEASES			
	PROJECTED	ACTUAL	DIFF	% DIFF	PROJECTED	ACTUAL	DIFF	% DIFF	PROJECTED	ACTUAL	DIFF	% DIFF	PROJECTED	ACTUAL	DIFF	% DIFF
Jul-07	357	375	-18	-4.8%	525	450	75	16.7%	458	431	27	6.3%	1,340	1,256	84	6.7%
Aug-07	373				465				442				1,280			
Sep-07	403				576				423				1,402			
Oct-07	401				522				427				1,350			
Nov-07	379				508				487				1,374			
Dec-07	409				487				439				1,335			
Jan-08	426				509				448				1,383			
Feb-08	402				492				451				1,345			
Mar-08	402				492				443				1,337			
Apr-08	356				528				473				1,357			
May-08	392				514				457				1,363			
Jun-08	438				503				459				1,400			
FY Total	4,738	375	N/A*	N/A*	6,121	450	N/A*	N/A*	5,407	431	N/A*	N/A*	16,266	1,256	N/A*	N/A*
FY Avg.	394.8	375.0	-18.0	-4.8%	510.1	450.0	75.0	16.7%	450.6	431.0	27.0	6.3%	1,355.5	1,256	84.0	6.7%

These tables compare the accuracy of the projection model by comparing projected releases to actual releases. Months in which the projected releases were less than actual releases will be represented with a negative sign.

NOTE: The last three months of actual numbers may change due to the time delay in data entry. It takes approximately 3 to 4 months for all data in any given month to accumulate or "top out".

COMMUNITY SERVICES POPULATION AS OF July 2007

	Community Services Total	Monthly Percent Change	Regular Probation	Percent of Total	Intensive Probation	Percent of Total	Community Corrections	Percent of Total
FY AVERAGE								
2001/2002	40,148	0.8%	33,812	84.2%	1,053	2.6%	5,284	13.2%
2002/2003	42,043	0.2%	35,346	84.1%	982	2.3%	5,715	13.6%
2003/2004	43,417	0.4%	36,582	84.3%	1,010	2.3%	5,825	13.4%
2004/2005	46,140	0.8%	39,173	84.9%	1,010	2.2%	5,957	12.9%
2005/2006	47,529	0.2%	40,308	84.8%	988	2.1%	6,234	13.1%
2006/2007								
July	49,357	-5.7%	42,018	85.1%	952	1.9%	6,387	12.9%
August	49,684	0.7%	42,321	85.2%	965	1.9%	6,398	12.9%
September	50,076	0.8%	42,691	85.3%	942	1.9%	6,443	12.9%
October	50,442	0.7%	43,052	85.3%	922	1.8%	6,468	12.8%
November	50,884	0.9%	43,529	85.5%	901	1.8%	6,454	12.7%
December	50,949	0.1%	43,580	85.5%	925	1.8%	6,444	12.6%
January	51,318	0.7%	43,913	85.6%	928	1.8%	6,477	12.6%
February	51,600	0.5%	44,134	85.5%	925	1.8%	6,541	12.7%
March	51,774	0.3%	44,215	85.4%	960	1.9%	6,599	12.7%
April	51,995	0.4%	44,422	85.4%	936	1.8%	6,637	12.8%
May	52,138	0.3%	44,553	85.5%	910	1.7%	6,675	12.8%
June	52,345	0.4%	44,837	85.7%	904	1.7%	6,604	12.6%
FY Average	51,047	0.0%	43,605	85.4%	931	1.8%	6,511	12.8%

	Community Services Total	Monthly Percent Change	Regular Probation	Percent of Total	Intensive Probation	Percent of Total	Community Corrections	Percent of Total
2007/2008								
July	52,521	0.3%	44,985	85.7%	915	1.7%	6,621	12.6%
August								
September								
October								
November								
December								
January								
February								
March								
April								
May								
June								
FY Average	52,521	0.3%	44,985	85.7%	915	1.7%	6,621	12.6%

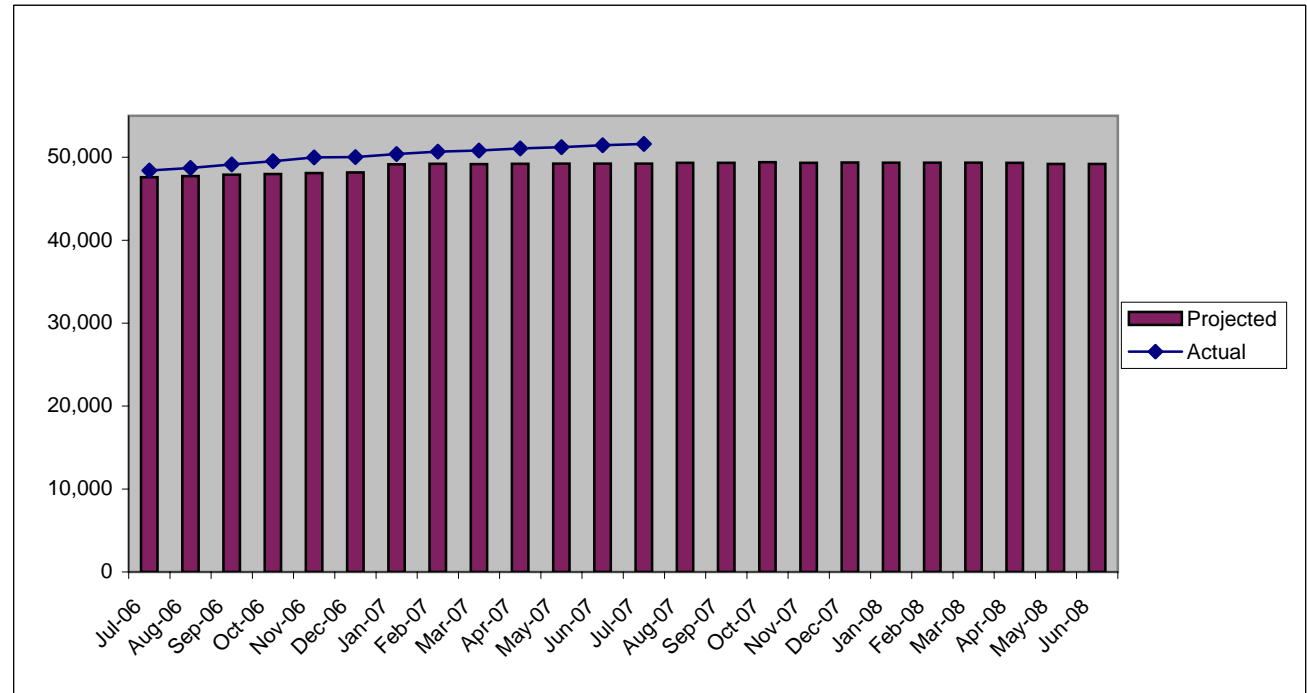
CORRECTION: Per BOPP the December probation counts were corrected on 1/23/2004

*Note: Data are not available at this time due to a change in the reporting procedure effective July 31, 2001.

Population figures on each year-end summary line are monthly averages. Percent change is calculated from the first month of the year to the last month of the year.

COMMUNITY SERVICES PROJECTIONS VS. ACTUAL

	Projected	Actual	DIFF	% DIFF
Jul-05	46,134	41,174	4,960	12.0%
Aug-05	46,214	46,180	34	0.1%
Sep-05	46,411	46,247	164	0.4%
Oct-05	46,563	46,477	86	0.2%
Nov-05	46,821	46,580	241	0.5%
Dec-05	46,879	46,826	53	0.1%
Jan-06	47,016	46,993	23	0.0%
Feb-06	47,267	47,175	92	0.2%
Mar-06	47,384	47,266	118	0.2%
Apr-06	47,412	47,558	-146	-0.3%
May-06	47,431	47,868	-437	-0.9%
Jun-06	47,477	48,159	-682	-1.4%
Jul-06	47,584	48,405	-821	-1.7%
Aug-06	47,727	48,719	-992	-2.0%
Sep-06	47,892	49,134	-1,242	-2.5%
Oct-06	47,987	49,520	-1,533	-3.1%
Nov-06	48,088	49,983	-1,895	-3.8%
Dec-06	48,162	50,024	-1,862	-3.7%
Jan-07	49,163	50,390	-1,227	-2.4%
Feb-07	49,208	50,675	-1,467	-2.9%
Mar-07	49,177	50,814	-1,637	-3.2%
Apr-07	49,219	51,059	-1,840	-3.6%
May-07	49,223	51,228	-2,005	-3.9%
Jun-07	49,232	51,441	-2,209	-4.3%
Jul-07	49,241	51,606	-2,365	-4.6%
Aug-07	49,322			
Sep-07	49,325			
Oct-07	49,403			
Nov-07	49,321			
Dec-07	49,360			
Jan-08	49,338			
Feb-08	49,349			
Mar-08	49,346			
Apr-08	49,323			
May-08	49,190			
Jun-08	49,197			



PROJECTIONS UPDATED January 2007*

***NOTE:** This chart *ONLY* includes projected population totals for Community Corrections and Regular Probation.

COMMUNITY SERVICES POPULATION FY END (JUNE 30) FY 1995/96 - FY 2006/07

	TOTAL COM.SRV.POP	TOTAL CHANGE	REGULAR PROBATION	PERCENT OF TOTAL	INTENSIVE PROBATION	PERCENT OF TOTAL	COMM. CORR.	PERCENT OF TOTAL
1995-96	30,387		25,237		1,762		3,388	
1996-97	32,051	5.5%	26,333	82.2%	1,786	5.6%	3,932	12.3%
1997-98	34,076	6.3%	28,432	83.4%	1,788	5.2%	3,856	11.3%
1998-99	36,748	7.8%	30,804	83.8%	1,644	4.5%	4,300	11.7%
1999-00	36,533	-0.6%	30,160	82.6%	1,657	4.5%	4,716	12.9%
2000-01	38,075	4.2%	31,458	82.6%	1,751	4.6%	4,866	12.8%
2001-02	41,652	9.4%	35,097	84.3%	975	2.3%	5,580	13.4%
2002-03	42,388	1.8%	35,636	84.1%	975	2.3%	5,777	13.6%
2003-04	44,476	4.9%	37,617	84.6%	1,067	2.4%	5,792	13.0%
2004-05	48,984	10.1%	41,950	85.6%	965	2.0%	6,069	12.4%
2005-06	49,126	0.3%	41,763	85.0%	967	2.0%	6,396	13.0%
2006-07	52,345	6.6%	44,837	85.7%	904	1.7%	6,604	12.6%

COMMUNITY SERVICES POPULATION AVERAGES FY 1995/96 - FY 2006/07

	AVG. TOTAL COM.SRV.POP	ANNUAL CHANGE	REGULAR PROBATION	PERCENT OF TOTAL	INTENSIVE PROBATION	PERCENT OF TOTAL	COMM. CORR.	PERCENT OF TOTAL
1995-96	29,727	7.6%	24,680	83.6%	1,718	5.7%	3,329	10.7%
1996-97	31,361	5.5%	25,843	82.4%	1,819	5.8%	3,699	11.8%
1997-98	33,007	5.2%	27,365	82.9%	1,772	5.4%	3,870	11.7%
1998-99	34,837	5.5%	29,016	83.3%	1,757	5.0%	4,064	11.7%
1999-00	35,772	2.7%	29,583	82.7%	1,624	4.5%	4,565	12.8%
2000-01	37,529	4.9%	31,068	82.8%	1,725	4.6%	4,736	12.6%
2001-02	40,149	7.0%	33,812	84.2%	1,053	2.6%	5,284	13.2%
2002-03	42,043	4.7%	35,346	84.1%	982	2.3%	5,715	13.6%
2003-04	43,417	3.3%	36,582	84.3%	1,010	2.3%	5,825	13.4%
2004-05	46,140	6.3%	39,173	84.9%	1,010	2.2%	5,957	12.9%
2005-06	47,530	3.0%	40,308	84.8%	988	2.1%	6,234	13.1%
2006-07	51,047	7.4%	43,605	85.4%	931	1.8%	6,511	12.8%

**PAROLE GRANT RATES IN TENNESSEE
FISCAL YEARS 2002/03 - 2007/08**

TOTAL HEARINGS	PAROLE GRANTED	% OF TOTAL	PAROLE DENIED	% OF TOTAL	PAROLE DENIED/WAIVER	% OF TOTAL	CONT.	% OF TOTAL	CONT./WAIVER	% OF TOTAL
----------------	----------------	------------	---------------	------------	----------------------	------------	-------	------------	--------------	------------

2002/2003

TOTAL	12,440	3,261	26.2%	8,211	66.0%		968	7.8%		
-------	--------	-------	-------	-------	-------	--	-----	------	--	--

2003/2004

TOTAL	12,658	3,481	27.5%	8,238	65.1%		939	7.4%		
-------	--------	-------	-------	-------	-------	--	-----	------	--	--

2004/2005

TOTAL	13,023	3,845	29.5%	7,260	55.7%	8,139	62.5%	866	6.6%	173	1.3%
-------	--------	-------	-------	-------	-------	-------	-------	-----	------	-----	------

2005/2006

TOTAL	14,126	4,400	31.1%	7,656	54.2%	935	6.6%	918	6.5%	217	1.5%
-------	--------	-------	-------	-------	-------	-----	------	-----	------	-----	------

2006/2007*

JULY	1,281	465	36.3%	635	49.6%	58	4.5%	86	6.7%	37	2.9%
AUGUST	1,358	419	30.9%	748	55.1%	78	5.7%	68	5.0%	45	3.3%
SEPTEMBER	1,161	407	35.1%	606	52.2%	62	5.3%	64	5.5%	22	1.9%
OCTOBER	1,053	376	35.7%	517	49.1%	76	7.2%	59	5.6%	25	2.4%
NOVEMBER	1,288	446	34.6%	676	52.5%	75	5.8%	63	4.9%	28	2.2%
DECEMBER	883	353	40.0%	433	49.0%	48	5.4%	36	4.1%	13	1.5%
JANUARY	1,180	439	37.2%	583	49.4%	66	5.6%	75	6.4%	17	1.4%
FEBRUARY	1,164	392	33.7%	618	53.1%	71	6.1%	69	5.9%	14	1.2%
MARCH	1,107	381	34.4%	596	53.8%	51	4.6%	54	4.9%	25	2.3%
APRIL	1,138	371	32.6%	614	54.0%	73	6.4%	56	4.9%	24	2.1%
MAY	1,213	371	30.6%	699	57.6%	58	4.8%	64	5.3%	21	1.7%
JUNE	1,157	359	31.0%	633	54.7%	77	6.7%	77	6.7%	11	1.0%
TOTAL	13,983	4,779	34.2%	7,358	52.6%	793	5.7%	771	5.5%	282	2.0%

2007/2008

JULY	1,332	429	32.2%	724	54.4%	82	6.2%	74	5.6%	23	1.7%
AUGUST											
SEPTEMBER											
OCTOBER											
NOVEMBER											
DECEMBER											
JANUARY											
FEBRUARY											
MARCH											
APRIL											
MAY											
JUNE											
TOTAL	1,332	429	32.2%	724	54.4%	82	6.2%	74	5.6%	23	1.7%

* As of the May 2007 report, the decline category has been broken out into decline and decline/waiver, and the continue category has been broken out into continue and continue/waiver. These categories are more definitive and will ensure that TDOC and BOPP reported statistics are more consistent. Data for this breakout is not available prior to FY 2005-2006.

Parole statistics are incomplete because all data are not received by TDOC immediately after inmates are paroled. Therefore, the numbers for any given month may be different from the previous month's report

PAROLE POPULATIONS FISCAL YEARS 2002/2003 - 2007/2008

2002/2003 AVERAGE ACTIVE POPULATION 7,906
2003/2004 AVERAGE ACTIVE POPULATION 8,008
2004/2005 AVERAGE ACTIVE POPULATION 8,369

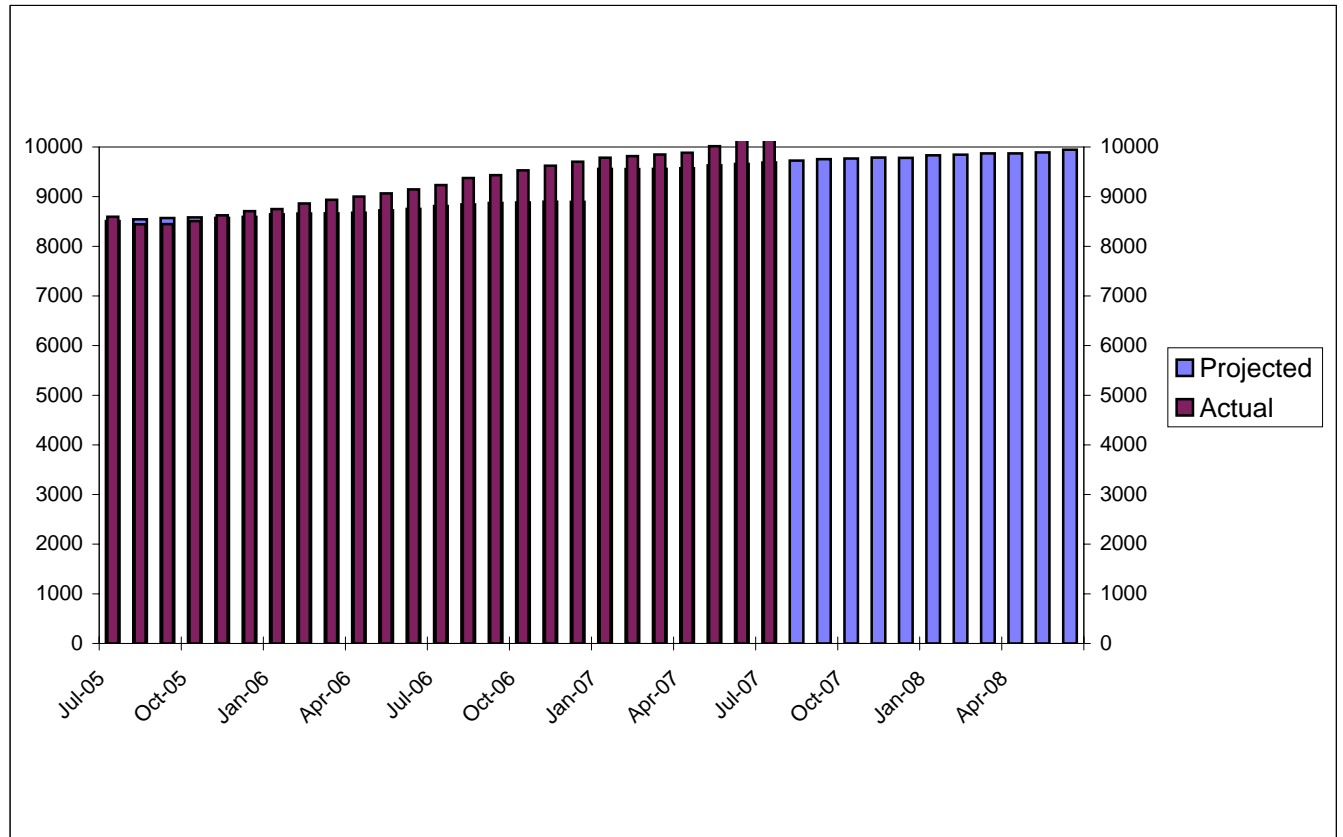
2005/2006	ACTIVE	MONTHLY	PERCENT
	POPULATION	CHANGE	CHANGE
JULY	8,596	39	0.5%
AUGUST	8,442	-154	-1.8%
SEPTEMBER	8,446	4	0.0%
OCTOBER	8,507	61	0.7%
NOVEMBER	8,623	116	1.4%
DECEMBER	8,707	84	1.0%
JANUARY	8,748	41	0.5%
FEBRUARY	8,863	115	1.3%
MARCH	8,936	73	0.8%
APRIL	9,002	66	0.7%
MAY	9,065	63	0.7%
JUNE	9,146	81	0.9%
AVERAGE	8,757		

2006/2007	ACTIVE	MONTHLY	PERCENT
	POPULATION	CHANGE	CHANGE
JULY	9,233	87	0.1%
AUGUST	9,374	141	0.5%
SEPTEMBER	9,433	59	0.6%
OCTOBER	9,530	97	1.0%
NOVEMBER	9,622	92	1.0%
DECEMBER	9,702	80	0.8%
JANUARY	9,784	82	0.8%
FEBRUARY	9,815	31	0.3%
MARCH	9,850	35	0.4%
APRIL	9,883	33	0.3%
MAY	10,017	134	1.4%
JUNE	10,163	146	1.5%
AVERAGE	9,701		

2007/2008	ACTIVE	MONTHLY	PERCENT
	POPULATION	CHANGE	CHANGE
JULY	10,249	86	0.8%
AUGUST			
SEPTEMBER			
OCTOBER			
NOVEMBER			
DECEMBER			
JANUARY			
FEBRUARY			
MARCH			
APRIL			
MAY			
JUNE			
AVERAGE	10,249		

PAROLE POPULATION PROJECTIONS VS. ACTUAL JULY 2005 THROUGH JUNE 2008

	Projected	Actual	Diff.	% Diff.
Jul-05	8509	8596	-87	-1.0%
Aug-05	8542	8442	100	1.2%
Sep-05	8570	8446	124	1.5%
Oct-05	8581	8507	74	0.9%
Nov-05	8571	8623	-52	-0.6%
Dec-05	8593	8707	-114	-1.3%
Jan-06	8642	8748	-106	-1.2%
Feb-06	8659	8863	-204	-2.3%
Mar-06	8663	8936	-273	-3.1%
Apr-06	8674	9002	-328	-3.6%
May-06	8725	9065	-340	-3.8%
Jun-06	8752	9146	-394	-4.3%
Jul-06	8810	9233	-423	-4.6%
Aug-06	8844	9374	-530	-5.7%
Sep-06	8872	9433	-561	-5.9%
Oct-06	8883	9530	-647	-6.8%
Nov-06	8899	9622	-723	-7.5%
Dec-06	8895	9702	-807	-8.3%
Jan-07	9557	9784	-227	-2.3%
Feb-07	9556	9815	-259	-2.6%
Mar-07	9560	9850	-290	-2.9%
Apr-07	9572	9883	-311	-3.1%
May-07	9629	10017	-388	-3.9%
Jun-07	9658	10163	-505	-5.0%
Jul-07	9688	10,249	-561	-5.5%
Aug-07	9726			
Sep-07	9756			
Oct-07	9768			
Nov-07	9786			
Dec-07	9782			
Jan-08	9833			
Feb-08	9845			
Mar-08	9871			
Apr-08	9871			
May-08	9891			
Jun-08	9944			



Projections Updated January 2007

BLUE REPORT USER'S GUIDE

Incarcerated Population

TDOC Backup: Felons sentenced to TDOC custody and held in local jails while awaiting transfer to a TDOC institution.

Locally Sentenced: Convicted felons sentenced to serve their time in a local jail. As felony offenders, these persons are under TDOC jurisdiction.

Other Convicted Felons: Convicted felons awaiting sentencing or not yet ready for transfer to TDOC because of other pending charges. Includes technical violators awaiting probable cause/revocation/recission hearing or adjudication of pending charges.

Convicted Misdemeanants: Inmates serving time because of a misdemeanor conviction.

Total Pre-Trial Detainees: Includes inmates charged with either a felony or a misdemeanor but not yet convicted.

Others: Inmates held in local facilities for federal crimes, city ordinances, etc.

Community Corrections: A grant program created in 1985 as an alternative to incarceration. Programs are developed based on the individual needs of the area served.

Admissions

New Commits: Refers to any person convicted of a felony sentenced to TDOC, but who is not on probation or parole. This may include persons who had prior incarcerations.

Violators Returned: Refers to commitment of felons on technical violations of the conditions of their parole or probation, or community correction terms.

Releases

Parole: Felons originally sentenced to an incarceration period and released to serve the remainder of their sentence under supervision.

Probation-Community Correction: Usually non-violent felons sentenced to serve a split sentence; a short jail or prison term and the remainder under state supervision.

General Notes

Backup: All offenders sentenced to TDOC custody are counted as admissions. Some offenders are held in backup at a local jail while awaiting transfer to a TDOC facility. This is due to lack of room for all offenders in TDOC facilities. Offenders in backup can be released for a number of reasons before they are transferred to TDOC. Inmates released from Backup to a TDOC facility are not counted as releases.

Primary Offense: As of July 2000, offenses are categorized according to the Tennessee Incident Based Reporting System (TIBRS) which is based on the FBI's National Incident Based Reporting System (NIBRS). This system of reporting is an attempt to standardize categorical offense reporting across criminal justice agencies. For more detail on how TCA code is categorized according to the TIBRS system, see the TBI website at <http://www.tbi.state.tn.us/tca.htm> or the TDOC Research Brief, "Assessing the Impact of the TIBRS on TDOC Criminal Offense Reporting."

Projected Felon Population-Admissions & Releases: is taken from the Annual Felon Population Projection Report. Ten year felon projections including admissions and releases are estimated every fall in order to help the TDOC in it's long term strategic planning. The current projections can be found on our website at <http://www.state.tn.us/corrections>.

Total TDOC Inmates, considered "backup" for TDOC purposes, refers to inmates sentenced to TDOC custody and held in local jails while awaiting transfer to a TDOC institution.