

Tennessee Felon Population Update

July 2009

Prepared By:

**Tennessee Department of Correction
Policy, Planning, and Research Section**

TENNESSEE FELON POPULATION UPDATE

TABLE OF CONTENTS

July 2009

Felon Population by Primary Offense Fiscal Year 2004/2005 to Present	1
Felon Population Projections vs. Actual Graph July 2006 to Present	2
Felon Inmate Population Projections vs. Actual Fiscal Year 2008/2009 to Present	3
Incarcerated Felon Population Fiscal Year 2004/2005 to Present	4
Incarcerated Felon Populations Fiscal Year 1997/1998 - 2008/2009	5
Local Jail Populations by Category Fiscal Years 2008/2009 to Present	6
Felon Admissions in Tennessee Fiscal Year 2009/2010	7
Felon Admissions in Tennessee Fiscal Year 2008/2009	8
Felon Admissions in Tennessee Fiscal Years 1998/1999 - 2008/2009	9
Felon Releases in Tennessee Fiscal Year 2009/2010	10
Felon Releases in Tennessee Fiscal Year 2008/2009	11
Felon Releases in Tennessee Fiscal Years 1998/1999 - 2008/2009	12
Projected Felon Admissions vs. Actual Fiscal Year 2008/2009 - 2009/2010	13
Projected Felon Releases Vs. Actual Fiscal Year 2008/2009 - 2009/2010	14
Community Services Population Fiscal Years 2003/2004 to Present	15
Community Services Projections Vs. Actual July 2008 to Present	16
Community Services Population Fiscal Years 1997/1998 - 2008/2009	17
Parole Grant Rates in Tennessee Fiscal Years 2004/2005 to Present	18
Parole Population Fiscal Years 2004/2005 to Present	19
Parole Population Projections vs. Actual Graph Fiscal Year 2007/2008 to Present	20

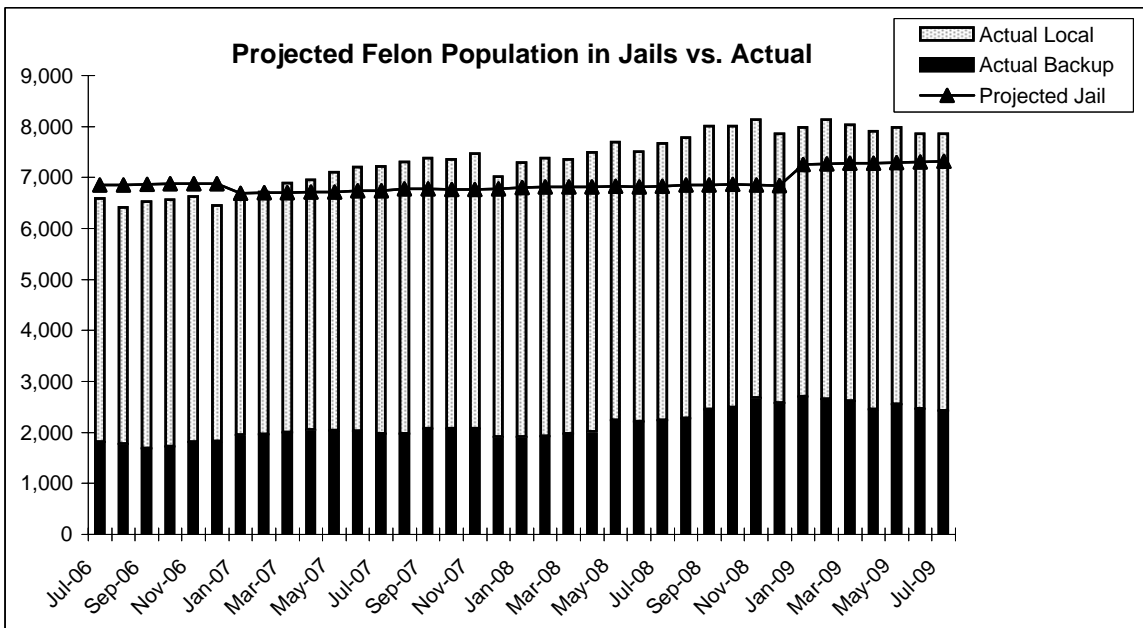
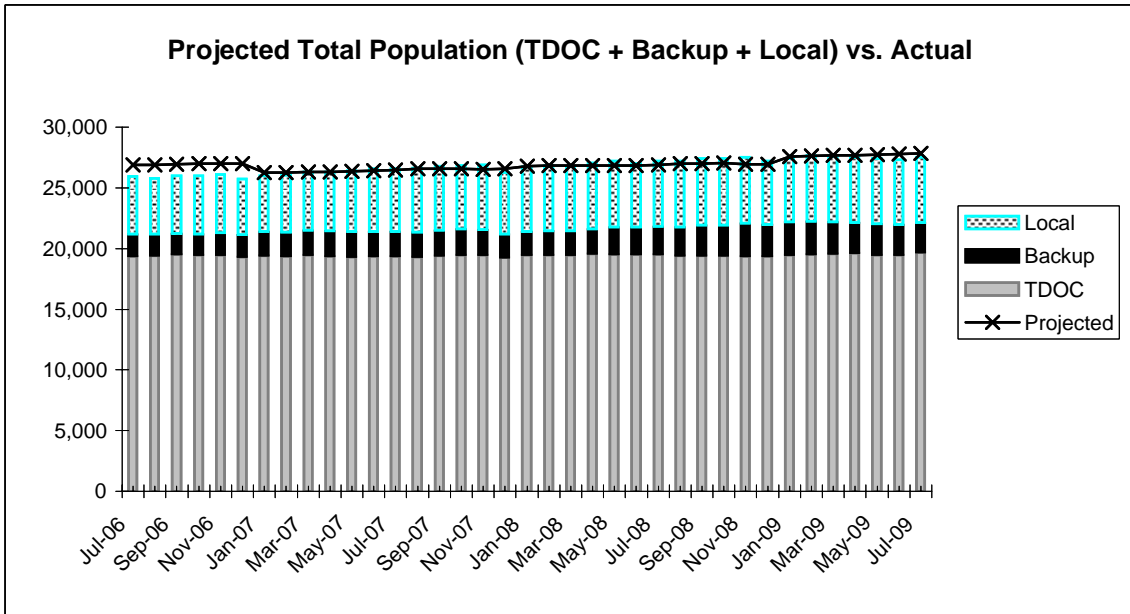
**TDOC POPULATION BY PRIMARY OFFENSE
AS OF June 30, 2009****

	TOTAL POP.	Monthly Change	Homicide	% OF TOTAL	Monthly Change	Kidnap	% OF TOTAL	Monthly Change	Sex Ofnder	% OF TOTAL	Monthly Change	Robbery	% OF TOTAL	Monthly Change	**Property	% OF TOTAL	Monthly Change	Assault	% OF TOTAL	Monthly Change	Drugs	% OF TOTAL	Monthly Change	Other	% OF TOTAL	Monthly Change	
Averages																											
FY 04/05	19,263	0.0%	3,543	18.4%		249	1.3%		2,797	14.5%		3,320	17.2%		3,144	16.3%		2,195	11.4%		2,682	13.9%		1,332	6.9%		
FY 05/06	19,248	0.0%	3,574	18.6%		242	1.3%		2,802	14.6%		3,164	16.4%		3,127	16.2%		2,187	11.4%		2,805	14.6%		1,347	7.0%		
FY 06/07	19,216	0.0%	3,593	18.6%		227	1.3%		2,815	14.6%		2,955	16.4%		3,140	16.2%		2,164	11.4%		2,930	14.6%		1,391	7.0%		
FY 07/08	19,258	0.0%	3,629	18.8%		244	1.3%		2,801	14.5%		2,861	14.9%		3,128	16.2%		2,146	11.1%		3,004	15.6%		1,444	7.5%		
2008/2009																											
JUL	19,364	0.5%	3,662	18.9%	0.9%	242	1.2%	-0.8%	2,787	14.4%	-0.5%	2,849	14.7%	-0.4%	3,042	15.7%	-2.7%	2,178	11.2%	1.5%	3,095	16.0%	3.0%	1,509	7.8%	4.5%	
AUG	19,284	-0.4%	3,663	19.0%	0.0%	239	1.2%	-1.2%	2,789	14.5%	0.1%	2,839	14.7%	-0.4%	3,005	15.6%	-1.2%	2,175	11.3%	-0.1%	3,080	16.0%	-0.5%	1,494	7.7%	-1.0%	
SEP	19,251	-0.2%	3,667	19.0%	0.1%	236	1.2%	-1.3%	2,792	14.5%	0.1%	2,843	14.8%	0.1%	2,990	15.5%	-0.5%	2,175	11.3%	0.0%	3,068	15.9%	-0.4%	1,480	7.7%	-0.9%	
OCT	19,305	0.3%	3,680	19.1%	0.4%	235	1.2%	-0.4%	2,788	14.4%	-0.1%	2,883	14.9%	1.4%	3,022	15.7%	1.1%	2,175	11.3%	0.0%	3,039	15.7%	-0.9%	1,483	7.7%	0.2%	
NOV	19,230	-0.4%	3,680	19.1%	0.0%	235	1.2%	0.0%	2,783	14.5%	-0.2%	2,861	14.9%	-0.8%	3,004	15.6%	-0.6%	2,169	11.3%	-0.3%	3,040	15.8%	0.0%	1,458	7.6%	-1.7%	
DEC	19,244	0.1%	3,694	19.2%	0.4%	233	1.2%	-0.9%	2,776	14.4%	-0.3%	2,870	14.9%	0.3%	2,976	15.5%	-0.9%	2,146	11.2%	-1.1%	3,082	16.0%	1.4%	1,467	7.6%	0.6%	
JAN	19,282	0.2%	3,708	19.2%	0.4%	232	1.2%	-0.4%	2,767	14.4%	-0.3%	2,862	14.8%	-0.3%	2,982	15.5%	0.2%	2,154	11.2%	0.4%	3,120	16.2%	1.2%	1,457	7.6%	-0.7%	
FEB	19,259	-0.1%	3,620	18.8%	-2.4%	236	1.2%	1.7%	2,805	14.6%	1.4%	2,843	14.8%	-0.7%	2,981	15.5%	0.0%	2,153	11.2%	0.0%	2,942	15.3%	-5.7%	1,679	8.7%	15.2%	
MAR	19,392	0.7%	3,711	19.1%	2.5%	235	1.2%	-0.4%	2,765	14.3%	-1.4%	2,887	14.9%	1.5%	3,024	15.6%	1.4%	2,186	11.3%	1.5%	3,129	16.1%	6.4%	1,455	7.5%	-13.3%	
APR	19,446	0.3%	3,722	19.1%	0.3%	236	1.2%	0.4%	2,775	14.3%	0.4%	2,862	14.7%	-0.9%	3,014	15.5%	-0.3%	2,196	11.3%	0.5%	3,147	16.2%	0.6%	1,494	7.7%	2.7%	
MAY	19,265	-0.9%	3,722	19.3%	0.0%	234	1.2%	-0.8%	2,762	14.3%	-0.5%	2,847	14.8%	-0.5%	2,960	15.4%	-1.8%	2,183	11.3%	-0.6%	3,102	16.1%	-1.4%	1,455	7.6%	-2.6%	
JUN	19,323	0.3%	3,736	19.3%	0.4%	232	1.2%	-0.9%	2,782	14.4%	0.7%	2,841	14.7%	-0.2%	2,981	15.4%	0.7%	2,197	11.4%	0.6%	3,108	16.1%	0.2%	1,446	7.5%	-0.6%	
FY AVG	19,304	0.0%	3,689	19.1%	0.2%	235	1.2%	-0.4%	2,781	14.4%	-0.1%	2,857	14.8%	-0.1%	2,998	15.5%	-0.4%	2,174	11.3%	0.2%	3,079	16.0%	0.3%	1,490	7.7%	0.2%	
2009/2010																											
JUL																											
AUG																											
SEP																											
OCT																											
NOV																											
DEC																											
JAN																											
FEB																											
MAR																											
APR																											
MAY																											
JUN																											
FY AVG																											

**All Primary Offense information is reported one month in arrears.

***Excludes Robbery (Prior to September 2000, these offenses only included Theft, Stolen Property and Burglary - now includes All Property except Robbery).

**PROJECTED POPULATION VS. ACTUAL
JULY 2006
TO PRESENT**



Projections Updated January 2009

**INCARCERATED FELON POPULATION
PROJECTIONS VS. ACTUAL
AS OF July 30, 2009**

2008/2009	PROJECTED	ACTUAL	DIFF	% DIFF
JULY	26,906	27,204	298	1.1%
AUGUST	26,971	27,204	233	0.9%
SEPTEMBER	26,995	27,421	426	1.6%
OCTOBER	27,040	27,431	391	1.4%
NOVEMBER	26,968	27,507	539	2.0%
DECEMBER	26,950	27,228	278	1.0%
JANUARY	27,582	27,408	-174	-0.6%
FEBRUARY	27,652	27,669	17	0.1%
MARCH	27,695	27,573	-122	-0.4%
APRIL	27,694	27,546	-148	-0.5%
MAY	27,733	27,419	-314	-1.1%
JUNE	27,773	27,325	-448	-1.6%
FY AVERAGE	27,330	27,411	81	0.3%

2009/2010	PROJECTED	ACTUAL	DIFF	% DIFF
JULY	27,839	27,532	-307	-1.1%
AUGUST	27,868			
SEPTEMBER	27,882			
OCTOBER	27,884			
NOVEMBER	27,808			
DECEMBER	27,888			
JANUARY	27,934			
FEBRUARY	27,973			
MARCH	28,046			
APRIL	28,051			
MAY	28,074			
JUNE	28,112			
FY AVERAGE	27,947	27,532	-307	-1.1%

These tables compare the actual population to the projection model. Thus, whenever the actual population exceeds the projected population, the % difference is interpreted as either exceeding or falling short of the projected population.

NOTE: Projections were updated January 2009.
Averages are column averages.

INCARCERATED FELON POPULATION AS OF July 31, 2009

	Total Felon Population (A+B+C)	Monthly Change	Monthly Percent Change	TDOD Facilities (A)	Percent of Total	TDOD Backup (B)	Percent of Total	Locally Sentenced (C)	Percent of Total	Local Jail Total (B+C)
FY AVG.										
2004/2005	26,035	26	0.1%	19,431	74.6%	2,180	8.4%	4,425	17.0%	6,605
2005/2006	26,323	-8	0.0%	19,406	73.7%	2,293	8.7%	4,624	17.6%	6,917
2006/2007	26,100	19	0.1%	19,379	74.3%	1,885	7.2%	4,836	18.5%	6,722

2007/2008

JULY	26,573	22	0.1%	19,354	72.8%	1,974	7.4%	5,245	19.7%	7,219
AUGUST	26,622	49	0.2%	19,319	72.6%	1,967	7.4%	5,336	20.0%	7,303
SEPTEMBER	26,772	150	0.6%	19,391	72.4%	2,073	7.7%	5,308	19.8%	7,381
OCTOBER	26,829	57	0.2%	19,470	72.6%	2,072	7.7%	5,287	19.7%	7,359
NOVEMBER	26,904	75	0.3%	19,432	72.2%	2,069	7.7%	5,403	20.1%	7,472
DECEMBER	26,267	-637	-2.4%	19,248	73.3%	1,910	7.3%	5,109	19.5%	7,019
JANUARY	26,728	461	1.8%	19,429	72.7%	1,903	7.1%	5,396	20.2%	7,299
FEBRUARY	26,850	122	0.5%	19,475	72.5%	1,922	7.2%	5,453	20.3%	7,375
MARCH	26,805	-45	-0.2%	19,454	72.6%	1,969	7.3%	5,382	20.1%	7,351
APRIL	27,054	249	0.9%	19,560	72.3%	2,007	7.4%	5,487	20.3%	7,494
MAY	27,204	150	0.6%	19,509	71.7%	2,235	8.2%	5,460	20.1%	7,695
JUNE	26,998	-206	-0.8%	19,497	72.2%	2,204	8.2%	5,297	19.6%	7,501
FY Average	26,801	37	0.1%	19,428	72.5%	2,025	7.6%	5,347	19.9%	7,372

2008/2009

JULY	27,204	206	0.8%	19,530	71.8%	2,239	8.2%	5,435	20.0%	7,674
AUGUST	27,204	0	0.0%	19,427	71.4%	2,274	8.4%	5,503	20.2%	7,777
SEPTEMBER	27,421	217	0.8%	19,410	70.8%	2,446	8.9%	5,565	20.3%	8,011
OCTOBER	27,431	10	0.0%	19,417	70.8%	2,483	9.1%	5,531	20.2%	8,014
NOVEMBER	27,507	76	0.3%	19,369	70.4%	2,669	9.7%	5,469	19.9%	8,138
DECEMBER	27,228	-279	-1.0%	19,368	71.1%	2,577	9.5%	5,283	19.4%	7,860
JANUARY	27,408	180	0.7%	19,431	70.9%	2,705	9.9%	5,272	19.2%	7,977
FEBRUARY	27,669	261	1.0%	19,534	70.6%	2,647	9.6%	5,488	19.8%	8,135
MARCH	27,573	-96	-0.3%	19,539	70.9%	2,606	9.5%	5,428	19.7%	8,034
APRIL	27,546	-27	-0.1%	19,632	71.3%	2,448	8.9%	5,466	19.8%	7,914
MAY	27,419	-127	-0.5%	19,431	70.9%	2,550	9.3%	5,438	19.8%	7,988
JUNE	27,325	-94	-0.3%	19,462	71.2%	2,465	9.0%	5,398	19.8%	7,863
FY Average	27,411	27	0.1%	19,463	71.0%	2,509	9.2%	5,440	19.8%	7,949

2009/2010

JULY	27,532	207	0.8%	19,674	71.5%	2,426	8.8%	5,432	19.7%	7,858
AUGUST										
SEPTEMBER										
OCTOBER										
NOVEMBER										
DECEMBER										
JANUARY										
FEBRUARY										
MARCH										
APRIL										
MAY										
JUNE										
FY Average	27,532	207	0.1%	19,674	71.5%	2,426	8.8%	5,432	19.7%	7,858

Population figures on each year summary line are monthly averages. Monthly change and percent change are calculated from the first month of the year to the last month of the year.

INCARCERATED FELON POPULATION TOTALS AT FISCAL YEAR END (JUNE 30) FY 1997/98 - FY 2008/09

	TOTAL FELON POP. (A+B+C)	TOTAL CHANGE	PERCENT CHANGE	TDOC FACILITIES (A)	PERCENT OF TOTAL	TDOC BACKUP (B)	PERCENT OF TOTAL	LOCALLY SENTENCED (C)	PERCENT OF TOTAL	LOCAL JAIL TOTAL (B+C)
1997-98	21,286	1,680	8.6%	15,640	73.5%	2,103	9.9%	3,543	16.6%	5,646
1998-99	22,287	1,001	4.7%	16,577	74.4%	1,846	8.3%	3,864	17.3%	5,710
1999-00	22,539	252	1.1%	16,824	74.6%	1,957	8.7%	3,758	16.7%	5,715
1900-01	23,062	523	2.3%	17,459	75.7%	1,901	8.2%	3,702	16.1%	5,603
2001-02	24,235	1,173	5.1%	17,715	73.1%	2,505	10.3%	4,015	16.6%	6,520
2002-03	25,469	1,234	5.1%	19,408	76.2%	1,956	7.7%	4,105	16.1%	6,061
2003-04	25,865	396	1.6%	19,408	75.0%	2,110	8.2%	4,347	16.8%	6,457
2004-05	26,209	344	1.3%	19,432	74.1%	2,321	8.9%	4,456	17.0%	6,777
2005-06	26,110	-99	-0.4%	19,429	74.4%	1,874	7.2%	4,807	18.4%	6,681
2006-07	26,551	441	1.7%	19,341	72.8%	2,023	7.6%	5,187	19.5%	7,210
2007-08	26,998	447	1.7%	19,497	72.2%	2,204	8.2%	5,297	19.6%	7,501
2008-09	27,325	327	1.2%	19,462	71.2%	2,465	9.0%	5,398	19.8%	7,863

INCARCERATED FELON POPULATIONS AVERAGES FY 1997/98 - FY 2008/09

	AVG. TOTAL FELON POP. (A+B+C)	ANNUAL CHANGE	PERCENT CHANGE	TDOC FACILITIES (A)	PERCENT OF TOTAL	TDOC BACKUP (B)	PERCENT OF TOTAL	LOCALLY SENTENCED (C)	PERCENT OF TOTAL	LOCAL JAIL TOTAL (B+C)
1997-98	20,401	1,238	6.5%	15,269	74.8%	1,617	7.9%	3,515	17.2%	5,132
1998-99	21,632	1,231	6.0%	15,933	73.7%	1,941	9.0%	3,758	17.4%	5,699
1999-00	22,608	976	4.5%	16,764	74.2%	1,927	8.5%	3,917	17.3%	5,844
1900-01	22,625	17	0.1%	17,140	75.8%	1,742	7.7%	3,743	16.5%	5,485
2001-02	23,891	1,266	5.6%	17,611	73.7%	2,143	9.0%	4,137	17.3%	6,280
2002-03	24,913	1,022	4.3%	18,436	74.0%	2,313	9.3%	4,164	16.7%	6,477
2003-04	25,635	722	2.9%	19,404	75.7%	2,021	7.9%	4,210	16.4%	6,231
2004-05	26,036	401	1.6%	19,431	74.6%	2,180	8.4%	4,425	17.0%	6,605
2005-06	26,323	287	1.1%	19,406	73.7%	2,293	8.7%	4,624	17.6%	6,917
2006-07	26,100	-223	-0.8%	19,379	74.2%	1,885	7.2%	4,836	18.5%	6,721
2007-08	26,801	701	2.7%	19,428	72.5%	2,025	7.6%	5,347	20.0%	7,372
2008-09	27,411	610	2.3%	19,463	71.0%	2,509	9.2%	5,440	19.8%	7,949

NOTE: FISCAL YEAR AVERAGES

LOCAL JAIL POPULATIONS AS OF July 31, 2009

(Source: TDOC's Jail Summary Report)

	Total Jail Pop.	Monthly Change	% Change	Total TDOC Inmates	Local Felons	Federal & Others	Other Convicted Felons	Convicted Misdem.	Total Pre-trial Detainees	% TDOC Felons	% Local Felons	% Federal & Others	% Other Conv. Felons	% Conv. Misdem.	% Pre-trial Detainees
2008/2009															
JULY	26,310	-462	-0.3%	2,239	5,435	982	509	5,061	12,084	9%	21%	4%	2%	19%	46%
AUGUST	26,913	603	2.3%	2,274	5,503	947	526	5,331	12,332	8%	20%	4%	2%	20%	46%
SEPTEMBER	26,779	-134	-0.5%	2,446	5,565	931	526	5,109	12,202	9%	21%	3%	2%	19%	46%
OCTOBER	26,536	-243	-0.9%	2,483	5,531	1040	779	5,124	11,579	9%	21%	4%	3%	19%	44%
NOVEMBER	26,219	-317	-1.2%	2,669	5,469	1016	776	4,753	11,536	10%	21%	4%	3%	18%	44%
DECEMBER	24,778	-1,441	-5.5%	2,577	5,283	955	708	4,229	11,026	10%	21%	4%	3%	17%	44%
JANUARY	26,214	1,436	5.8%	2,705	5,272	1021	752	5,092	11,372	10%	20%	4%	3%	19%	43%
FEBRUARY	26,119	-95	-0.4%	2,647	5,488	999	742	5,295	10,948	10%	21%	4%	3%	20%	42%
MARCH	26,441	322	1.2%	2,606	5,428	1016	760	5,203	11,428	10%	21%	4%	3%	20%	43%
APRIL	26,265	-176	-0.7%	2,448	5,466	942	717	5,274	11,418	9%	21%	4%	3%	20%	43%
MAY	26,898	633	2.4%	2,550	5,438	923	724	5,636	11,627	9%	20%	3%	3%	21%	43%
JUNE	26,772	-126	-0.5%	2,465	5,398	916	813	5,341	11,839	9%	20%	3%	3%	20%	44%
2008/2009 AVERAGE	26,354			2,509	5,440	974	694	5,121	11,616	10%	21%	4%	3%	19%	44%

	Total Jail Pop.	Monthly Change	% Change	Total TDOC Inmates	Local Felons	Federal & Others	Other Convicted Felons	Convicted Misdem.	Total Pre-trial Detainees	% TDOC Felons	% Local Felons	% Federal & Others	% Other Conv. Felons	% Conv. Misdem.	% Pre-trial Detainees
2009/2010															
JULY	27,169	397	1.5%	2,426	5,432	1017	700	5,741	11,853	9%	20%	4%	3%	21%	44%
AUGUST															
SEPTEMBER															
OCTOBER															
NOVEMBER															
DECEMBER															
JANUARY															
FEBRUARY															
MARCH															
APRIL															
MAY															
JUNE															
2009/2010 AVERAGE	27,169			2,426	5,432	1,017	700	5,741	11,853	9%	20%	4%	3%	21%	44%

FELON ADMISSIONS IN TENNESSEE FISCAL YEAR 2009/2010
July 2009

TOTAL ADMISSIONS	PERCENT CHANGE	NEW COMMITS	PERCENT OF TOTAL	VIOLATORS RETURNED	PERCENT OF TOTAL	ESCAPEES & OTHERS	PERCENT OF TOTAL
------------------	----------------	-------------	------------------	--------------------	------------------	-------------------	------------------

2009/2010

TDOC

JULY	557		306	54.9%	243	43.6%	8	1.4%
AUGUST	0	-100.0%						
SEPTEMBER								
OCTOBER								
NOVEMBER								
DECEMBER								
JANUARY								
FEBRUARY								
MARCH								
APRIL								
MAY								
JUNE								
TOTAL	557		306	54.9%	243	43.6%	8	1.4%

2009/2010

LOCALLY SENTENCED

JULY	283		201	71.0%	82	29.0%	0	0.0%
AUGUST	0	-100.0%						
SEPTEMBER								
OCTOBER								
NOVEMBER								
DECEMBER								
JANUARY								
FEBRUARY								
MARCH								
APRIL								
MAY								
JUNE								
TOTAL	283		201	71.0%	82	29.0%	0	0.0%

2009/2010

SYSTEM TOTAL

JULY	840		507	60.4%	325	38.7%	8	1.0%
AUGUST	0	-100.0%	0					
SEPTEMBER	0		0					
OCTOBER	0		0					
NOVEMBER	0		0					
DECEMBER	0		0					
JANUARY	0		0					
FEBRUARY	0		0					
MARCH	0		0					
APRIL	0		0					
MAY	0		0					
JUNE	0		0					
TOTAL	840		507	60.4%	325	38.7%	8	1.0%

Admission statistics are incomplete because all data are not received by TDOC immediately after sentencing. In some cases information is not received until several months after sentencing; therefore, the numbers for any given month may be different from the previous month's report.

FELON ADMISSIONS IN TENNESSEE FISCAL YEAR 2008/2009

TOTAL ADMISSIONS	PERCENT CHANGE	NEW COMMITTS	PERCENT OF TOTAL	VIOLATORS RETURNED	PERCENT OF TOTAL	ESCAPEES & OTHERS	PERCENT OF TOTAL
---------------------	-------------------	-----------------	---------------------	-----------------------	---------------------	----------------------	---------------------

2008/2009

TDOC

JULY	988		555	56.2%	415	42.0%	18	1.8%
AUGUST	957	-3.1%	510	53.3%	432	45.1%	15	1.6%
SEPTEMBER	992	3.7%	569	57.4%	415	41.8%	8	0.8%
OCTOBER	944	-4.8%	518	54.9%	419	44.4%	7	0.7%
NOVEMBER	874	-7.4%	524	60.0%	343	39.2%	7	0.8%
DECEMBER	746	-14.6%	417	55.9%	324	43.4%	5	0.7%
JANUARY	929	24.5%	564	60.7%	353	38.0%	12	1.3%
FEBRUARY	866	-6.8%	524	60.5%	334	38.6%	8	0.9%
MARCH	859	-0.8%	481	56.0%	366	42.6%	12	1.4%
APRIL	858	-0.1%	490	57.1%	354	41.3%	14	1.6%
MAY	810	-5.6%	511	63.1%	295	36.4%	4	0.5%
JUNE	773	-4.6%	455	58.9%	310	40.1%	8	1.0%
TOTAL	10,596		6,118	57.7%	4,360	41.1%	118	1.1%

2008/2009

LOCALLY SENTENCED

JULY	311		205	65.9%	106	34.1%	0	0.0%
AUGUST	297	-4.5%	207	69.7%	87	29.3%	3	1.0%
SEPTEMBER	301	1.3%	194	64.5%	106	35.2%	1	0.3%
OCTOBER	277	-8.0%	180	65.0%	97	35.0%	0	0.0%
NOVEMBER	261	-5.8%	184	70.5%	76	29.1%	1	0.4%
DECEMBER	251	-3.8%	157	62.5%	93	37.1%	1	0.4%
JANUARY	290	15.5%	205	70.7%	83	28.6%	2	0.7%
FEBRUARY	301	3.8%	193	64.1%	107	35.5%	1	0.3%
MARCH	281	-6.6%	178	63.3%	101	35.9%	2	0.7%
APRIL	281	0.0%	182	64.8%	96	34.2%	3	1.1%
MAY	317	12.8%	217	68.5%	100	31.5%	0	0.0%
JUNE	231	-27.1%	156	67.5%	72	31.2%	3	1.3%
TOTAL	3,399		2,258	66.4%	1,124	33.1%	17	0.5%

2008/2009

SYSTEM TOTAL

JULY	1,299		760	58.5%	521	40.1%	18	1.4%
AUGUST	1,254	-3.5%	717	57.2%	519	41.4%	18	1.4%
SEPTEMBER	1,293	3.1%	763	59.0%	521	40.3%	9	0.7%
OCTOBER	1,221	-5.6%	698	57.2%	516	42.3%	7	0.6%
NOVEMBER	1,135	-7.0%	708	62.4%	419	36.9%	8	0.7%
DECEMBER	997	-12.2%	574	57.6%	417	41.8%	6	0.6%
JANUARY	1,219	22.3%	769	63.1%	436	35.8%	14	1.1%
FEBRUARY	1,167	-4.3%	717	61.4%	441	37.8%	9	0.8%
MARCH	1,140	-2.3%	659	57.8%	467	41.0%	14	1.2%
APRIL	1,139	-0.1%	672	59.0%	450	39.5%	17	1.5%
MAY	1,127	-1.1%	728	64.6%	395	35.0%	4	0.4%
JUNE	1,004	-10.9%	611	60.9%	382	38.0%	11	1.1%
TOTAL	13,995		8,376	59.8%	5,484	39.2%	135	1.0%

Admission statistics are incomplete because all data are not received by TDOC immediately after sentencing. In some cases information is not received until several months after sentencing; therefore, the numbers for any given month may be different from the previous month's report.

**FELON ADMISSIONS IN TENNESSEE
FISCAL YEARS 1998/99 - 2008/09**

TOTAL ADMISSIONS	PERCENT CHANGE	NEW COMMITS	PERCENT OF TOTAL	VIOLATORS RETURNED	PERCENT OF TOTAL	ESCAPEES & OTHERS	PERCENT OF TOTAL
------------------	----------------	-------------	------------------	--------------------	------------------	-------------------	------------------

TDOC								
1998-99	8,452	-2.4%	4,905	58.0%	3,464	41.0%	83	1.0%
1999-00	8,694	2.9%	5,249	60.4%	3,350	38.5%	95	1.1%
2000-01	9,037	3.9%	5,381	59.5%	3,514	38.9%	142	1.6%
2001-02	9,608	6.3%	5,644	58.7%	3,848	40.0%	116	1.2%
2002-03	9,529	-0.8%	5,658	59.4%	3,769	39.6%	102	1.1%
2003-04	10,262	7.7%	6,086	59.3%	4,047	39.4%	129	1.3%
2004-05	10,417	1.5%	6,027	57.9%	4,275	41.0%	115	1.1%
2005-06	10,913	4.8%	6,299	57.7%	4,492	41.2%	122	1.1%
2006-07	11,208	1.5%	6,343	57.9%	4,733	41.0%	132	1.1%
2007-08	11,197	-0.1%	6,326	56.5%	4,748	42.4%	123	1.1%
2008-09	10,596	-5.4%	6,118	57.7%	4,360	41.1%	118	1.1%

LOCALLY SENTENCED								
1998-99	4,721	-4.5%	3,202	67.8%	1,490	31.6%	29	0.6%
1999-00	4,756	0.7%	3,510	73.8%	1,224	25.7%	22	0.5%
2000-01	4,405	-7.4%	2,982	67.7%	1,388	31.5%	35	0.8%
2001-02	4,022	-8.7%	2,693	67.0%	1,307	32.5%	22	0.5%
2002-03	3,733	-7.2%	2,405	64.4%	1,308	35.0%	20	0.5%
2003-04	3,582	-4.0%	2,350	65.6%	1,214	33.9%	18	0.5%
2004-05	3,759	4.9%	2,413	64.2%	1,327	35.3%	19	0.5%
2005-06	3,638	-3.2%	2,321	64.2%	1,296	35.3%	21	0.5%
2006-07	3,667	4.9%	2,322	63.3%	1,332	36.3%	13	0.4%
2007-08	3,615	-1.4%	2,443	67.6%	1,152	31.9%	20	0.6%
2008-09	3,399	-6.0%	2,258	66.4%	1,124	33.1%	17	0.5%

SYSTEM TOTAL								
1998-99	13,173	4.9%	8,107	61.5%	4,954	37.6%	112	0.9%
1999-00	13,450	2.1%	8,759	65.1%	4,574	34.0%	117	0.9%
2000-01	13,442	-0.1%	8,363	62.2%	4,902	36.5%	177	1.3%
2001-02	13,630	1.4%	8,337	61.2%	5,155	37.8%	138	1.0%
2002-03	13,262	-2.7%	8,063	60.8%	5,077	38.3%	122	0.9%
2003-04	13,844	4.4%	8,436	60.9%	5,261	38.0%	147	1.1%
2004-05	14,176	2.4%	8,440	59.5%	5,602	39.5%	134	0.9%
2005-06	14,551	2.6%	8,620	59.2%	5,788	39.8%	143	1.0%
2006-07	14,875	2.2%	8,665	58.3%	6,065	39.5%	145	1.0%
2007-08	14,812	-0.4%	8,769	59.2%	5,900	39.8%	143	1.0%
2008-09	13,995	-5.5%	8,376	59.8%	5,484	39.2%	135	1.0%

FELON RELEASES IN TENNESSEE FISCAL YEAR 2009/2010

	TOTAL RELEASES	PERCENT CHANGE	PAROLE	PERCENT OF TOTAL	PROBATION COM. COR.	PERCENT OF TOTAL	EXPIRATION & OTHERS	PERCENT OF TOTAL
--	----------------	----------------	--------	------------------	---------------------	------------------	---------------------	------------------

*TDOC

JULY	527		304	57.7%	42	8.0%	181	34.3%
AUGUST		-100.0%						
SEPTEMBER								
OCTOBER								
NOVEMBER								
DECEMBER								
JANUARY								
FEBRUARY								
*MARCH								
APRIL								
MAY								
JUNE								
TOTAL	527		304	57.7%	42	8.0%	181	34.3%

TDOC BACKUP

JULY	395		70	17.7%	197	49.9%	128	32.4%
AUGUST		-100.0%						
SEPTEMBER								
OCTOBER								
NOVEMBER								
DECEMBER								
JANUARY								
FEBRUARY								
MARCH								
APRIL								
MAY								
JUNE								
TOTAL	395		70	17.7%	197	49.9%	128	32.4%

LOCALLY SENTENCED

JULY	255		39	15.3%	96	37.6%	120	47.1%
AUGUST	0	-100.0%						
SEPTEMBER								
OCTOBER								
NOVEMBER								
DECEMBER								
JANUARY								
FEBRUARY								
MARCH								
APRIL								
MAY								
JUNE								
TOTAL	255		39	15.3%	96	37.6%	120	47.1%

SYSTEM TOTAL

JULY	1,177		413	35.1%	335	28.5%	429	36.4%
AUGUST		-100.0%						
SEPTEMBER								
OCTOBER								
NOVEMBER								
DECEMBER								
JANUARY								
FEBRUARY								
MARCH								
APRIL								
MAY								
JUNE								
TOTAL	1,177		413	35.1%	335	28.5%	429	36.4%

***Beginning with the March 2008 update, the TDOC Release numbers in this report include offenders released from TDOC after revocation of a split confinement suspension of sentence. Only figures back to FY 06/07 were adjusted. Release statistics are incomplete because all data are not received by TDOC immediately after inmates are released. Therefore, the numbers for any given month may be different from the previous month's report.**

FELON RELEASES IN TENNESSEE FISCAL YEAR 2008/2009

	TOTAL RELEASES	PERCENT CHANGE	PAROLE	PERCENT OF TOTAL	PROBATION COM. COR.	PERCENT OF TOTAL	EXPIRATION & OTHERS	PERCENT OF TOTAL
*TDOC								
JULY	500		234	46.8%	73	14.6%	193	38.6%
AUGUST	522	4.4%	227	43.5%	74	14.2%	221	42.3%
SEPTEMBER	532	1.9%	269	50.6%	77	14.5%	186	35.0%
OCTOBER	491	-7.7%	261	53.2%	39	7.9%	191	38.9%
NOVEMBER	511	4.1%	260	50.9%	39	7.6%	212	41.5%
DECEMBER	522	2.2%	284	54.4%	50	9.6%	188	36.0%
JANUARY	447	-14.4%	213	47.7%	36	8.1%	198	44.3%
FEBRUARY	501	12.1%	268	53.5%	39	7.8%	194	38.7%
*MARCH	600	19.8%	333	55.5%	55	9.2%	212	35.3%
APRIL	524	-12.7%	291	55.5%	48	9.2%	185	35.3%
MAY	576	9.9%	311	54.0%	74	12.8%	191	33.2%
JUNE	556	-3.5%	312	56.1%	69	12.4%	175	31.5%
TOTAL	6,282		3,263	51.9%	673	10.7%	2,346	37.3%

	TOTAL RELEASES	PERCENT CHANGE	PAROLE	PERCENT OF TOTAL	PROBATION COM. COR.	PERCENT OF TOTAL	EXPIRATION & OTHERS	PERCENT OF TOTAL
TDOC BACKUP								
JULY	520		63	12.1%	308	59.2%	149	28.7%
AUGUST	545	4.8%	47	8.6%	359	65.9%	139	25.5%
SEPTEMBER	488	-10.5%	52	10.7%	295	60.5%	141	28.9%
OCTOBER	448	-8.2%	46	10.3%	277	61.8%	125	27.9%
NOVEMBER	425	-5.1%	57	13.4%	294	69.2%	74	17.4%
DECEMBER	573	34.8%	63	11.0%	303	52.9%	207	36.1%
JANUARY	446	-22.2%	52	11.7%	277	62.1%	117	26.2%
FEBRUARY	480	7.6%	75	15.6%	259	54.0%	146	30.4%
MARCH	493	2.7%	66	13.4%	278	56.4%	149	30.2%
APRIL	489	-0.8%	76	15.5%	275	56.2%	138	28.2%
MAY	484	-1.0%	93	19.2%	265	54.8%	126	26.0%
JUNE	516	6.6%	103	20.0%	270	52.3%	143	27.7%
TOTAL	5,907		793	13.4%	3,460	58.6%	1,654	28.0%

	TOTAL RELEASES	PERCENT CHANGE	PAROLE	PERCENT OF TOTAL	PROBATION COM. COR.	PERCENT OF TOTAL	EXPIRATION & OTHERS	PERCENT OF TOTAL
LOCALLY SENTENCED								
JULY	301		40	13.3%	147	48.8%	114	37.9%
AUGUST	284	-5.6%	32	11.3%	140	49.3%	112	39.4%
SEPTEMBER	315	10.9%	33	10.5%	153	48.6%	129	41.0%
OCTOBER	282	-10.5%	28	9.9%	131	46.5%	123	43.6%
NOVEMBER	225	-20.2%	38	16.9%	124	55.1%	63	28.0%
DECEMBER	381	69.3%	37	9.7%	154	40.4%	190	49.9%
JANUARY	252	-33.9%	24	9.5%	118	46.8%	110	43.7%
FEBRUARY	265	5.2%	24	9.1%	118	44.5%	123	46.4%
MARCH	286	7.9%	36	12.6%	162	56.6%	88	30.8%
APRIL	260	-9.1%	25	9.6%	119	45.8%	116	44.6%
MAY	296	13.8%	43	14.5%	139	47.0%	114	38.5%
JUNE	296	0.0%	43	14.5%	128	43.2%	125	42.2%
TOTAL	3,443		403	11.7%	1,633	47.4%	1,407	40.9%

	TOTAL RELEASES	PERCENT CHANGE	PAROLE	PERCENT OF TOTAL	PROBATION COM. COR.	PERCENT OF TOTAL	EXPIRATION & OTHERS	PERCENT OF TOTAL
SYSTEM TOTAL								
JULY	1,321		337	25.5%	528	40.0%	456	34.5%
AUGUST	1,351	2.3%	306	22.6%	573	42.4%	472	34.9%
SEPTEMBER	1,335	-1.2%	354	26.5%	525	39.3%	456	34.2%
OCTOBER	1,221	-8.5%	335	27.4%	447	36.6%	439	36.0%
NOVEMBER	1,161	-4.9%	355	30.6%	457	39.4%	349	30.1%
DECEMBER	1,476	27.1%	384	26.0%	507	34.3%	585	39.6%
JANUARY	1,145	-22.4%	289	25.2%	431	37.6%	425	37.1%
FEBRUARY	1,246	8.8%	367	29.5%	416	33.4%	463	37.2%
MARCH	1,379	10.7%	435	31.5%	495	35.9%	449	32.6%
APRIL	1,273	-7.7%	392	30.8%	442	34.7%	439	34.5%
MAY	1,356	6.5%	447	33.0%	478	35.3%	431	31.8%
JUNE	1,368	0.9%	458	33.5%	467	34.1%	443	32.4%
TOTAL	15,632		4,459	28.5%	5,766	36.9%	5,407	34.6%

***Beginning with the March 2008 update, the TDOC Release numbers in this report include offenders released from TDOC after revocation of a split confinement suspension of sentence. Only figures back to FY 06/07 were adjusted.**

Release statistics are incomplete because all data are not received by TDOC immediately after inmates are released.

Therefore, the numbers for any given month may be different from the previous month's report.

FELON RELEASES IN TENNESSEE FISCAL YEARS 1998/99 - 2008/09

	TOTAL RELEASES	PERCENT CHANGE	PAROLE	PERCENT OF TOTAL	PROBATION COM. COR.	PERCENT OF TOTAL	EXPIRATION & OTHERS	PERCENT OF TOTAL
--	----------------	----------------	--------	------------------	---------------------	------------------	---------------------	------------------

TDOC

1998-99	4,241	0.6%	2,270	53.5%	444	10.5%	1,527	36.0%
1999-00	4,691	10.6%	2,548	54.3%	506	10.8%	1,637	34.9%
2000-01	5,032	7.3%	2,727	54.2%	568	11.3%	1,737	34.5%
2001-02	4,553	-9.5%	2,224	48.8%	514	11.3%	1,815	39.9%
2002-03	4,842	6.3%	2,262	46.7%	603	12.5%	1,977	40.8%
2003-04	5,493	13.4%	2,552	46.5%	698	12.7%	2,243	40.8%
2004-05	5,804	5.7%	2,767	47.7%	709	12.2%	2,328	40.1%
2005-06	6,146	5.9%	3,152	51.3%	756	12.3%	2,238	36.4%
2006-07	6,882	12.0%	3,453	50.2%	892	13.0%	2,537	36.9%
2007-08	6,636	-3.6%	3,254	49.0%	875	13.2%	2,507	37.8%
2008-09	6,282	-5.3%	3,263	51.9%	673	10.7%	2,346	37.3%

TDOC BACKUP

1998-99	4,044	4.4%	484	12.0%	2,516	62.2%	1,044	25.8%
1999-00	3,933	-2.7%	546	13.9%	2,315	58.9%	1,072	27.3%
2000-01	3,917	-0.4%	486	12.4%	2,402	61.3%	1,029	26.3%
2001-02	4,212	7.5%	392	9.3%	2,677	63.6%	1,143	27.1%
2002-03	4,539	7.8%	423	9.3%	2,884	63.5%	1,232	27.1%
2003-04	4,788	5.5%	409	8.5%	3,150	65.8%	1,229	25.7%
2004-05	5,235	9.3%	485	9.3%	3,349	64.0%	1,401	26.8%
2005-06	5,913	13.0%	577	9.8%	3,721	62.9%	1,615	27.3%
2006-07	5,874	-0.7%	594	10.1%	3,804	64.8%	1,476	25.1%
2007-08	6,177	5.2%	642	10.4%	3,955	64.0%	1,580	25.6%
2008-09	5,907	-4.4%	793	13.4%	3,460	58.6%	1,654	28.0%

LOCALLY SENTENCED

1998-99	4,546	0.2%	558	12.3%	2,326	51.2%	1,662	36.6%
1999-00	4,365	-4.0%	610	14.0%	2,076	47.6%	1,679	38.5%
2000-01	3,998	-8.4%	550	13.8%	1,983	49.6%	1,465	36.6%
2001-02	3,810	-4.7%	387	10.2%	1,909	50.1%	1,514	39.7%
2002-03	3,509	-7.9%	266	7.6%	1,760	50.2%	1,483	42.3%
2003-04	3,311	-5.6%	247	7.5%	1,601	48.4%	1,463	44.2%
2004-05	3,337	0.8%	272	8.2%	1,681	50.4%	1,384	41.5%
2005-06	3,544	6.2%	278	7.8%	1,826	51.5%	1,440	40.6%
2006-07	3,409	-3.8%	338	9.9%	1,679	49.3%	1,392	40.8%
2007-08	3,488	2.3%	399	11.4%	1,679	48.1%	1,410	40.4%
2008-09	3,443	-1.3%	403	11.7%	1,633	47.4%	1,407	40.9%

SYSTEM TOTAL

1998-99	12,831	18.7%	3,312	31.7%	5,286	40.1%	4,233	28.1%
1999-00	12,989	1.2%	3,704	28.5%	4,897	37.7%	4,388	33.8%
2000-01	12,947	-0.3%	3,763	29.1%	4,953	38.3%	4,231	32.7%
2001-02	12,575	-2.9%	3,003	23.9%	5,100	40.6%	4,472	35.6%
2002-03	12,890	2.5%	2,951	22.9%	5,247	40.7%	4,692	36.4%
2003-04	13,592	5.4%	3,208	23.6%	5,449	40.1%	4,935	36.3%
2004-05	14,376	5.8%	3,524	24.5%	5,739	39.9%	5,113	35.6%
2005-06	15,603	8.5%	4,007	25.7%	6,303	40.4%	5,293	33.9%
2006-07	16,165	3.6%	4,385	27.1%	6,375	39.4%	5,405	33.4%
2007-08	16,301	0.8%	4,295	26.3%	6,509	39.9%	5,497	33.7%
2008-09	15,632	-4.1%	4,459	28.5%	5,766	36.9%	5,407	34.6%

PROJECTED FELON ADMISSIONS VS. ACTUAL
July 2009
(Projections Updated January 2009)

FY 2008/2009	NEW COMMITMENTS AND OTHERS				PAROLE/PROBATION/COM. CORR. VIOLATORS				TOTAL ADMISSIONS			
	PROJECTED	ACTUAL	DIFF	% DIFF	PROJECTED	ACTUAL	DIFF	% DIFF	PROJECTED	ACTUAL	DIFF	% DIFF
Jul-08	691	778	-87	-11.2%	497	521	-24	-4.6%	1,188	1,299	-111	-8.5%
Aug-08	663	735	-72	-9.8%	512	519	-7	-1.3%	1,175	1,254	-79	-6.3%
Sep-08	665	772	-107	-13.9%	504	521	-17	-3.3%	1,169	1,293	-124	-9.6%
Oct-08	650	705	-55	-7.8%	521	516	5	1.0%	1,171	1,221	-50	-4.1%
Nov-08	636	716	-80	-11.2%	515	419	96	22.9%	1,151	1,135	16	1.4%
Dec-08	732	580	152	26.2%	493	417	76	18.2%	1,225	997	228	22.9%
Jan-09	753	783	-30	-3.8%	516	436	80	18.3%	1,269	1,219	50	4.1%
Feb-09	743	726	17	2.3%	497	441	56	12.7%	1,240	1,167	73	6.3%
Mar-09	735	673	62	9.2%	478	467	11	2.4%	1,213	1,140	73	6.4%
Apr-09	726	689	37	5.4%	485	450	35	7.8%	1,211	1,139	72	6.3%
May-09	725	732	-7	-1.0%	524	395	129	32.7%	1,249	1,127	122	10.8%
Jun-09	727	622	105	16.9%	495	382	113	29.6%	1,222	1,004	218	21.7%
FY Total	8,446	8,511	-65	-0.8%	6,037	5,484	553	10.1%	14,483	13,995	488	3.5%
FY Avg.	703.8	709.3	-5.4	0.1%	503.1	457.0	46.1	11.4%	1206.9	1166.3	40.7	4.3%

FY 2009/2010	NEW COMMITMENTS AND OTHERS				PAROLE/PROBATION/COM. CORR. VIOLATORS				TOTAL ADMISSIONS			
	PROJECTED	ACTUAL	DIFF	% DIFF	PROJECTED	ACTUAL	DIFF	% DIFF	PROJECTED	ACTUAL	DIFF	% DIFF
Jul-09	757	515	242	47.0%	492	325	167	51.4%	1,249	840	409	48.7%
Aug-09	757				522				1,279			
Sep-09	740				475				1,215			
Oct-09	722				504				1,226			
Nov-09	731				474				1,205			
Dec-09	766				515				1,281			
Jan-10	758				507				1,265			
Feb-10	749				453				1,202			
Mar-10	740				498				1,238			
Apr-10	730				505				1,235			
May-10	731				544				1,275			
Jun-10	732				519				1,251			
FY Total	8,913	515	N/A*	N/A*	6,008	325	N/A*	N/A*	14,921	840	N/A*	N/A*
FY Avg.	742.8	515.0	242.0	47.0%	500.7	325.0	167.0	51.4%	1,243	840	409	48.7%

These tables compare the accuracy of the projection model by comparing projected admissions to actual admissions. Months in which the projected admissions are less than actual admissions will be represented with a negative sign.

NOTE: The last three months of actual numbers may change due to the time delay in data entry. It takes approximately 3 to 4 months for all data in any given month to accumulate or "top out".

PROJECTED FELON RELEASES VS. ACTUAL

July 2009

(Projections Updated January 2009)

	PAROLEES				PROBATIONERS & COMMUNITY CORRECTIONS				DISCHARGES & OTHERS				TOTAL RELEASES			
	PROJECTED	ACTUAL	DIFF	% DIFF	PROJECTED	ACTUAL	DIFF	% DIFF	PROJECTED	ACTUAL	DIFF	% DIFF	PROJECTED	ACTUAL	DIFF	% DIFF
2008/2009																
Jul-08	364	337	27	8.0%	517	528	-11	-2.1%	427	456	-29	-6.4%	1,308	1,321	-13	-1.0%
Aug-08	389	306	83	27.1%	530	573	-43	-7.5%	430	472	-42	-8.9%	1,349	1,351	-2	-0.1%
Sep-08	385	354	31	8.8%	485	525	-40	-7.6%	485	456	29	6.4%	1,355	1,335	20	1.5%
Oct-08	362	335	27	8.1%	516	447	69	15.4%	456	439	17	3.9%	1,334	1,221	113	9.3%
Nov-08	367	355	12	3.4%	563	457	106	23.2%	463	349	114	32.7%	1,393	1,161	232	20.0%
Dec-08	390	384	6	1.6%	486	507	-21	-4.1%	486	585	-99	-16.9%	1,362	1,476	-114	-7.7%
Jan-09	357	289	68	23.5%	550	431	119	27.6%	436	425	11	2.6%	1,343	1,145	198	17.3%
Feb-09	335	367	-32	-8.7%	477	416	61	14.7%	478	463	15	3.2%	1,290	1,246	44	3.5%
Mar-09	372	435	-63	-14.5%	465	495	-30	-6.1%	459	449	10	2.2%	1,296	1,379	-83	-6.0%
Apr-09	373	392	-19	-4.8%	501	442	59	13.3%	447	439	8	1.8%	1,321	1,273	48	3.8%
May-09	389	447	-58	-13.0%	513	478	35	7.3%	454	431	23	5.3%	1,356	1,356	0	0.0%
Jun-09	362	458	-96	-21.0%	441	467	-26	-5.6%	491	443	48	10.8%	1,294	1,368	-74	-5.4%
FY Total	4,445	4,459	-14	-0.3%	6,044	5,766	278	4.8%	5,512	5,407	105	1.9%	16,001	15,632	369	2.4%
FY Avg.	370.4	371.6	-1.2	1.5%	503.7	480.5	23.2	5.7%	459.3	450.6	8.8	3.1%	1,333.4	1,303	30.8	2.9%

	PAROLEES				PROBATIONERS & COMMUNITY CORRECTIONS				DISCHARGES & OTHERS				TOTAL RELEASES			
	PROJECTED	ACTUAL	DIFF	% DIFF	PROJECTED	ACTUAL	DIFF	% DIFF	PROJECTED	ACTUAL	DIFF	% DIFF	PROJECTED	ACTUAL	DIFF	% DIFF
2009/2010																
Jul-09	373	413	-40	-9.7%	498	335	163	48.7%	430	429	1	0.2%	1,301	1,177	124	10.5%
Aug-09	406				500				496				1,402			
Sep-09	398				501				471				1,370			
Oct-09	374				458				479				1,311			
Nov-09	390				542				513				1,445			
Dec-09	409				521				481				1,411			
Jan-10	361				480				493				1,334			
Feb-10	353				491				488				1,332			
Mar-10	359				482				502				1,343			
Apr-10	392				501				476				1,369			
May-10	390				501				519				1,410			
Jun-10	378				470				482				1,330			
FY Total	4,583	413	N/A*	N/A*	5,945	335	N/A*	N/A*	5,830	429	N/A*	N/A*	16,358	1,177	N/A*	N/A*
FY Avg.	381.9	413.0	-40.0	-9.7%	495.4	335.0	163.0	48.7%	485.8	429.0	1.0	0.2%	1,363.2	1,177	124.0	10.5%

These tables compare the accuracy of the projection model by comparing projected releases to actual releases. Months in which the projected releases were less than actual releases will be represented with a negative sign.

NOTE: The last three months of actual numbers may change due to the time delay in data entry. It takes approximately 3 to 4 months for all data in any given month to accumulate or "top out".

**COMMUNITY SERVICES POPULATION
as of July 2009**

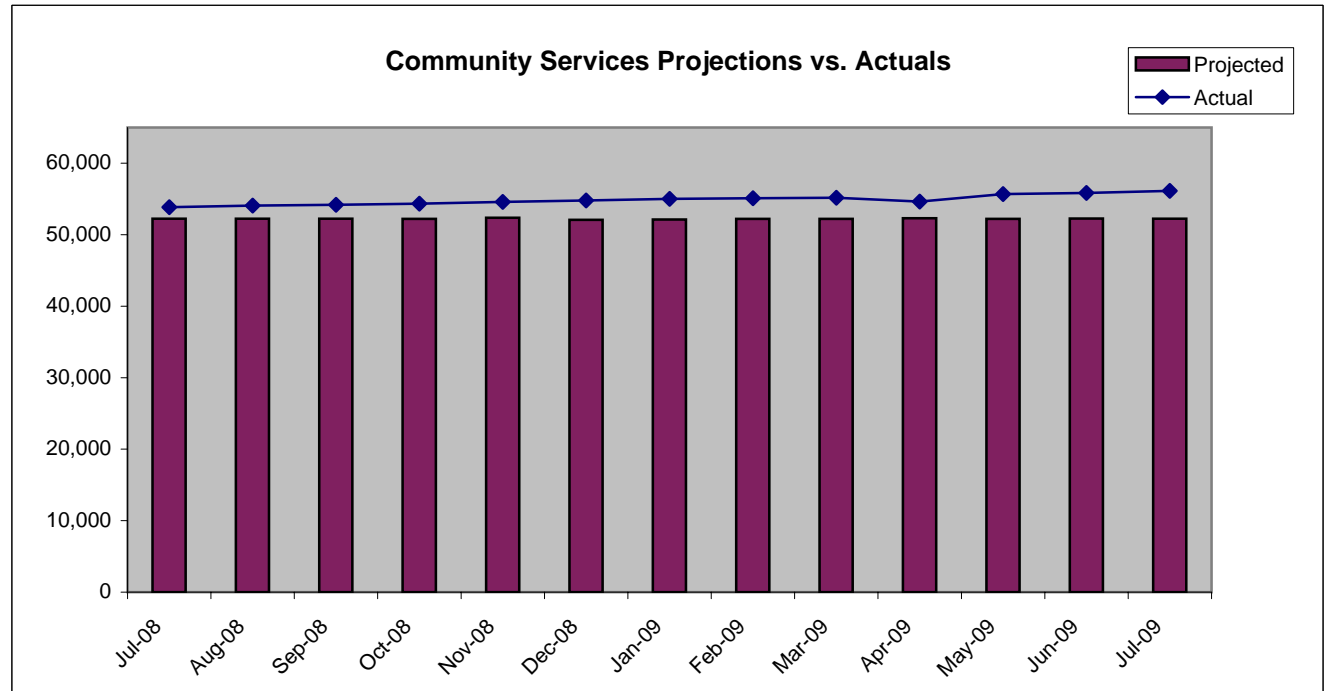
	Community Services Total	Monthly Percent Change	Regular Probation	Percent of Total	Intensive Probation	Percent of Total	Community Corrections	Percent of Total
FY AVERAGE								
2003/2004	43,417	0.4%	36,582	84.3%	1,010	2.3%	5,825	13.4%
2004/2005	46,140	0.8%	39,173	84.9%	1,010	2.2%	5,957	12.9%
2005/2006	47,529	0.2%	40,308	84.8%	988	2.1%	6,234	13.1%
2006/2007	51,047	0.0%	43,605	85.4%	931	1.8%	6,511	12.8%
2007/2008	53,502	0.4%	45,792	85.6%	975	1.8%	6,735	12.6%
2008/2009								
July	54,827	0.3%	47,031	85.8%	983	1.8%	6,813	12.4%
August	55,079	0.5%	47,221	85.7%	1,006	1.8%	6,852	12.4%
September	55,222	0.3%	47,320	85.7%	1,028	1.9%	6,874	12.4%
October	55,315	0.2%	47,504	85.9%	972	1.8%	6,839	12.4%
November	55,570	0.5%	47,716	85.9%	983	1.8%	6,871	12.4%
December	55,836	0.5%	47,933	85.8%	1,007	1.8%	6,896	12.4%
January	56,022	0.3%	48,085	85.8%	1,007	1.8%	6,930	12.4%
February	56,080	0.1%	48,218	86.0%	975	1.7%	6,887	12.3%
March	56,097	0.0%	48,342	86.2%	918	1.6%	6,837	12.2%
April	56,508	0.7%	48,633	86.1%	931	1.6%	6,944	12.3%
May	56,618	0.2%	48,739	86.1%	928	1.6%	6,951	12.3%
June	56,779	0.3%	48,924	86.2%	930	1.6%	6,925	12.2%
FY Average	55,829	0.3%	47,972	85.9%	972	1.7%	6,885	12.3%

	Community Services Total	Monthly Percent Change	Regular Probation	Percent of Total	Intensive Probation	Percent of Total	Community Corrections	Percent of Total
2009/2010								
July	57,071	0.5%	49,185	86.2%	928	1.6%	6,958	12.2%
August		-100.0%						
September								
October								
November								
December								
January								
February								
March								
April								
May								
June								
FY Average	57,071	-49.7%	49,185	86.2%	928	1.6%	6,958	12.2%

Population figures on each year-end summary line are monthly averages. Percent change is calculated from the first month of the year to the last month of the year.

COMMUNITY SERVICES PROJECTIONS VS. ACTUAL July 2009

	Projected	Actual	DIFF	% DIFF
Jun-06	47,477	48,159	-682	-1.4%
Jul-06	47,584	48,405	-821	-1.7%
Aug-06	47,727	48,719	-992	-2.0%
Sep-06	47,892	49,134	-1,242	-2.5%
Oct-06	47,987	49,520	-1,533	-3.1%
Nov-06	48,088	49,983	-1,895	-3.8%
Dec-06	48,162	50,024	-1,862	-3.7%
Jan-07	49,163	50,390	-1,227	-2.4%
Feb-07	49,208	50,675	-1,467	-2.9%
Mar-07	49,177	50,814	-1,637	-3.2%
Apr-07	49,219	51,059	-1,840	-3.6%
May-07	49,223	51,228	-2,005	-3.9%
Jun-07	49,232	51,441	-2,209	-4.3%
Jul-07	49,241	51,606	-2,365	-4.6%
Aug-07	49,322	51,745	-2,423	-4.7%
Sep-07	49,325	51,857	-2,532	-4.9%
Oct-07	49,403	51,905	-2,502	-4.8%
Nov-07	49,321	52,168	-2,847	-5.5%
Dec-07	49,360	52,387	-3,027	-5.8%
Jan-08	52,135	52,631	-496	-0.9%
Feb-08	52,221	52,725	-504	-1.0%
Mar-08	52,224	52,938	-714	-1.3%
Apr-08	52,306	53,154	-848	-1.6%
May-08	52,219	53,532	-1,313	-2.5%
Jun-08	52,260	53,680	-1,420	-2.6%
Jul-08	52,238	53,844	-1,606	-3.0%
Aug-08	52,249	54,073	-1,824	-3.4%
Sep-08	52,245	54,194	-1,949	-3.6%
Oct-08	52,221	54,343	-2,122	-3.9%
Nov-08	52,379	54,587	-2,208	-4.0%
Dec-08	52,086	54,791	-2,705	-4.9%
Jan-09	52,135	55,015	-2,880	-5.2%
Feb-09	52,221	55,105	-2,884	-5.2%
Mar-09	52,224	55,179	-2,955	-5.4%
Apr-09	52,306	54,646	-2,340	-4.3%
May-09	52,219	55,690	-3,471	-6.2%
Jun-09	52,260	55,849	-3,589	-6.4%
Jul-09	52,238	56,143		
Aug-09	52,249	0		
Sep-09	52,245	0		
Oct-09	52,221	0		
Nov-09	52,379	0		



***NOTE:** This chart *ONLY* includes projected population totals for Community Corrections and Regular Probation.

COMMUNITY SERVICES POPULATION FY END (JUNE 30) FY 1997/98 - FY 2008/09

	TOTAL COM.SRV.POP	TOTAL CHANGE	REGULAR PROBATION	PERCENT OF TOTAL	INTENSIVE PROBATION	PERCENT OF TOTAL	COMM. CORR.	PERCENT OF TOTAL
1997-98	34,076	6.3%	28,432	83.4%	1,788	5.2%	3,856	11.3%
1998-99	36,748	7.8%	30,804	83.8%	1,644	4.5%	4,300	11.7%
1999-00	36,533	-0.6%	30,160	82.6%	1,657	4.5%	4,716	12.9%
2000-01	38,075	4.2%	31,458	82.6%	1,751	4.6%	4,866	12.8%
2001-02	41,652	9.4%	35,097	84.3%	975	2.3%	5,580	13.4%
2002-03	42,388	1.8%	35,636	84.1%	975	2.3%	5,777	13.6%
2003-04	44,476	4.9%	37,617	84.6%	1,067	2.4%	5,792	13.0%
2004-05	48,984	10.1%	41,950	85.6%	965	2.0%	6,069	12.4%
2005-06	49,126	0.3%	41,763	85.0%	967	2.0%	6,396	13.0%
2006-07	52,345	6.6%	44,837	85.7%	904	1.7%	6,604	12.6%
2007-08	54,677	4.5%	46,853	85.7%	997	1.8%	6,827	12.5%
2008-09	56,779	3.8%	48,924	86.2%	930	1.6%	6,925	12.2%

COMMUNITY SERVICES POPULATION AVERAGES FY 1997/98 - FY 2008/09

	AVG. TOTAL COM.SRV.POP	ANNUAL CHANGE	REGULAR PROBATION	PERCENT OF TOTAL	INTENSIVE PROBATION	PERCENT OF TOTAL	COMM. CORR.	PERCENT OF TOTAL
1997-98	33,007	5.2%	27,365	82.9%	1,772	5.4%	3,870	11.7%
1998-99	34,837	5.5%	29,016	83.3%	1,757	5.0%	4,064	11.7%
1999-00	35,772	2.7%	29,583	82.7%	1,624	4.5%	4,565	12.8%
2000-01	37,529	4.9%	31,068	82.8%	1,725	4.6%	4,736	12.6%
2001-02	40,149	7.0%	33,812	84.2%	1,053	2.6%	5,284	13.2%
2002-03	42,043	4.7%	35,346	84.1%	982	2.3%	5,715	13.6%
2003-04	43,417	3.3%	36,582	84.3%	1,010	2.3%	5,825	13.4%
2004-05	46,140	6.3%	39,173	84.9%	1,010	2.2%	5,957	12.9%
2005-06	47,530	3.0%	40,308	84.8%	988	2.1%	6,234	13.1%
2006-07	51,047	7.4%	43,605	85.4%	931	1.8%	6,511	12.8%
2007-08	53,502	4.8%	45,792	85.6%	975	1.8%	6,735	12.6%
2008-09	55,829	4.3%	47,972	85.9%	972	1.7%	6,885	12.3%

**PAROLE GRANT RATES IN TENNESSEE
FISCAL YEARS 2004/05 - 2009/10
July 2009**

	TOTAL HEARINGS	PAROLE GRANTED	% OF TOTAL	PAROLE DENIED	% OF TOTAL	PAROLE DENIED/WAIVED	% OF TOTAL	CONT.	% OF TOTAL	CONT./WAIVED	% OF TOTAL
FY TOTALS											
2004/2005	13,023	3,845	29.5%	7,260	55.7%	8,139	62.5%	866	6.6%	173	1.3%
2005/2006	14,126	4,400	31.1%	7,656	54.2%	935	6.6%	918	6.5%	217	1.5%
2006/2007*	13,985	4,778	34.2%	7,359	52.6%	793	5.7%	773	5.5%	282	2.0%
2007/2008	14,327	4,286	29.9%	8,006	55.9%	886	6.2%	872	6.1%	277	1.9%

2008/2009

JULY	1,144	341	29.8%	625	54.6%	70	6.1%	87	7.6%	21	1.8%
AUGUST	1,182	375	31.7%	653	55.2%	64	5.4%	61	5.2%	29	2.5%
SEPTEMBER	1,305	439	33.6%	683	52.3%	64	4.9%	81	6.2%	38	2.9%
OCTOBER	1,384	429	31.0%	780	56.4%	68	4.9%	60	4.3%	47	3.4%
NOVEMBER	928	311	33.5%	499	53.8%	50	5.4%	56	6.0%	12	1.3%
DECEMBER	1,117	485	43.4%	505	45.2%	46	4.1%	53	4.7%	28	2.5%
JANUARY	1,053	438	41.6%	453	43.0%	63	6.0%	64	6.1%	35	3.3%
FEBRUARY	1,233	504	40.9%	556	45.1%	66	5.4%	74	6.0%	33	2.7%
MARCH	1,140	443	38.9%	531	46.6%	72	6.3%	69	6.1%	25	2.2%
APRIL	1,176	494	42.0%	535	45.5%	46	3.9%	59	5.0%	42	3.6%
MAY	1,093	479	43.8%	479	43.8%	56	5.1%	53	4.8%	26	2.4%
JUNE	1,143	463	40.5%	552	48.3%	37	3.2%	59	5.2%	32	2.8%
TOTAL	13,898	5,201	37.4%	6,851	49.3%	702	5.1%	776	5.6%	368	2.6%

2009/2010

JULY	1,038	398	38.3%	505	48.7%	45	4.3%	67	6.5%	23	2.2%
AUGUST											
SEPTEMBER											
OCTOBER											
NOVEMBER											
DECEMBER											
JANUARY											
FEBRUARY											
MARCH											
APRIL											
MAY											
JUNE											
TOTAL	1,038	398	38.3%	505	48.7%	45	4.3%	67	6.5%	23	2.2%

*As of the May 2007 report, the denied category has been broken out into denied and denied/waived, and the continue category has been broken out into continued and continued/waived. These categories are more definitive and will ensure that TDOC and BOPP reported statistics are more consistent. Data for this breakout is not available prior to FY 2005-2006.

Parole statistics are incomplete because all data are not received by TDOC immediately after inmates are paroled.

Therefore, the numbers for any given month may be different from the previous month's report

PAROLE POPULATIONS FISCAL YEARS 2004/2005 - 2009/2010

2004/2005 AVERAGE ACTIVE POPULATION 8,369
2005/2006 AVERAGE ACTIVE POPULATION 8,757
2006/2007 AVERAGE ACTIVE POPULATION 9,701

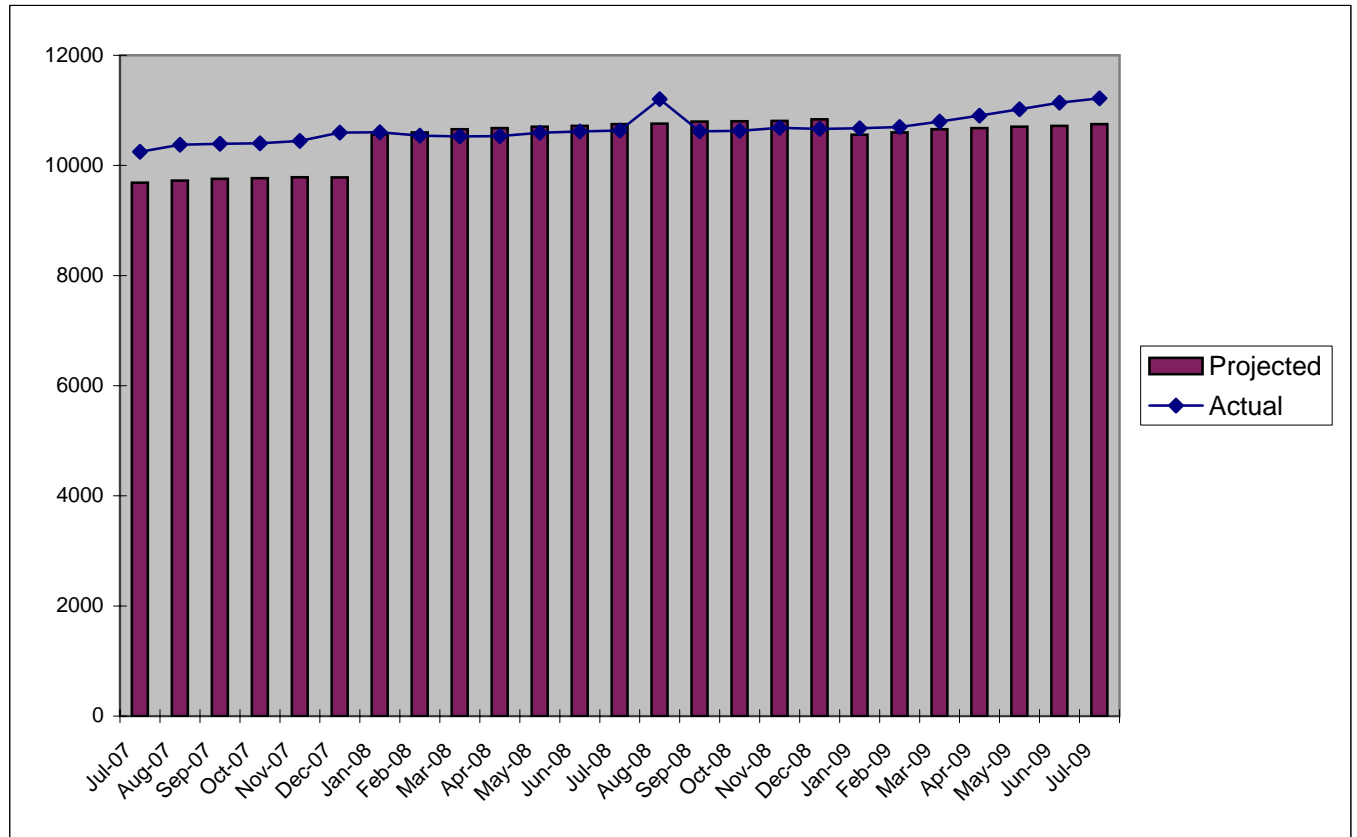
2007/2008	ACTIVE	MONTHLY	PERCENT
	POPULATION	CHANGE	CHANGE
JULY	10,249		
AUGUST	10,377	128	0.5%
SEPTEMBER	10,392	15	0.1%
OCTOBER	10,402	10	0.1%
NOVEMBER	10,445	43	0.4%
DECEMBER	10,597	152	1.5%
JANUARY	10,601	4	0.0%
FEBRUARY	10,542	-59	-0.6%
MARCH	10,527	-15	-0.1%
APRIL	10,533	6	0.1%
MAY	10,594	61	0.6%
JUNE	10,617	23	0.2%
AVERAGE	10,490		

2008/2009	ACTIVE	MONTHLY	PERCENT
	POPULATION	CHANGE	CHANGE
JULY	10,634	17	0.2%
AUGUST	11,205	571	5.4%
SEPTEMBER	10,621	-584	-5.2%
OCTOBER	10,630	9	0.1%
NOVEMBER	10,683	53	0.5%
DECEMBER	10,663	-20	-0.2%
JANUARY	10,675	12	0.1%
FEBRUARY	10,698	23	0.2%
MARCH	10,796	98	0.9%
APRIL	10,905	109	1.0%
MAY	11,021	116	1.1%
JUNE	11,139	118	1.1%
AVERAGE	10,806		

2009/2010	ACTIVE	MONTHLY	PERCENT
	POPULATION	CHANGE	CHANGE
JULY	11,218	79	0.7%
AUGUST			
SEPTEMBER			
OCTOBER			
NOVEMBER			
DECEMBER			
JANUARY			
FEBRUARY			
MARCH			
APRIL			
MAY			
JUNE			
AVERAGE	11,218		

PAROLE POPULATION PROJECTIONS VS. ACTUAL JULY 2007 to PRESENT

	Projected	Actual	Diff.	% Diff.
Jul-06	8810	9,233	-423	-4.6%
Aug-06	8844	9,374	-530	-5.7%
Sep-06	8872	9,433	-561	-5.9%
Oct-06	8883	9,530	-647	-6.8%
Nov-06	8899	9,622	-723	-7.5%
Dec-06	8895	9,702	-807	-8.3%
Jan-07	9557	9,784	-227	-2.3%
Feb-07	9556	9,815	-259	-2.6%
Mar-07	9560	9,850	-290	-2.9%
Apr-07	9572	9,883	-311	-3.1%
May-07	9629	10,017	-388	-3.9%
Jun-07	9658	10,163	-505	-5.0%
Jul-07	9688	10,249	-561	-5.5%
Aug-07	9726	10,377	-651	-6.3%
Sep-07	9756	10,392	-636	-6.1%
Oct-07	9768	10,402	-634	-6.1%
Nov-07	9786	10,445	-659	-6.3%
Dec-07	9782	10,597	-815	-7.7%
Jan-08	10559	10,601	-42	-0.4%
Feb-08	10600	10,542	58	0.6%
Mar-08	10659	10,527	132	1.3%
Apr-08	10677	10,533	144	1.4%
May-08	10703	10,594	109	1.0%
Jun-08	10720	10,617	103	1.0%
Jul-08	10751	10,634	117	1.1%
Aug-08	10759	11,205	-446	-4.0%
Sep-08	10797	10,621	176	1.7%
Oct-08	10803	10,630	173	1.6%
Nov-08	10808	10,683	125	1.2%
Dec-08	10839	10,663	176	1.7%
Jan-09	10559	10,675	-116	-1.1%
Feb-09	10600	10,698	-98	-0.9%
Mar-09	10659	10,796	-137	-1.3%
Apr-09	10677	10,905	-228	-2.1%
May-09	10703	11,021	-318	-2.9%
Jun-09	10720	11,139	-419	-3.8%
Jul-09	10751	11,218	-467	-4.2%



Projections Updated January 2009

BLUE REPORT USER'S GUIDE

Incarcerated Population

TDOC Backup: Felons sentenced to TDOC custody and held in local jails while awaiting transfer to a TDOC institution.

Locally Sentenced: Convicted felons sentenced to serve their time in a local jail. As felony offenders, these persons are under TDOC jurisdiction.

Other Convicted Felons: Convicted felons awaiting sentencing or not yet ready for transfer to TDOC because of other pending charges. Includes technical violators awaiting probable cause/revocation/recission hearing or adjudication of pending charges.

Convicted Misdemeanants: Inmates serving time because of a misdemeanor conviction.

Total Pre-Trial Detainees: Includes inmates charged with either a felony or a misdemeanor but not yet convicted.

Others: Inmates held in local facilities for federal crimes, city ordinances, etc.

Community Corrections: A grant program created in 1985 as an alternative to incarceration. Programs are developed based on the individual needs of the area served.

Admissions

New Commits: Refers to any person convicted of a felony sentenced to TDOC, but who is not on probation or parole. This may include persons who had prior incarcerations.

Violators Returned: Refers to commitment of felons on technical violations of the conditions of their parole or probation, or community correction terms.

Releases

Parole: Felons originally sentenced to an incarceration period and released to serve the remainder of their sentence under supervision.

Probation-Community Correction: Usually non-violent felons sentenced to serve a split sentence; a short jail or prison term and the remainder under state supervision.

General Notes

Backup: All offenders sentenced to TDOC custody are counted as admissions. Some offenders are held in backup at a local jail while awaiting transfer to a TDOC facility. This is due to lack of room for all offenders in TDOC facilities. Offenders in backup can be released for a number of reasons before they are transferred to TDOC. Inmates released from Backup to a TDOC facility are not counted as releases.

Primary Offense: As of July 2000, offenses are categorized according to the Tennessee Incident Based Reporting System (TIBRS) which is based on the FBI's National Incident Based Reporting System (NIBRS). This system of reporting is an attempt to standardize categorical offense reporting across criminal justice agencies. For more detail on how TCA code is categorized according to the TIBRS system, see the TBI website at <http://www.tbi.state.tn.us/tca.htm> or the TDOC Research Brief, "Assessing the Impact of the TIBRS on TDOC Criminal Offense Reporting."

Projected Felon Population-Admissions & Releases: is taken from the Annual Felon Population Projection Report. Ten year felon projections including admissions and releases are estimated every fall in order to help the TDOC in it's long term strategic planning. The current projections can be found on our website at <http://www.state.tn.us/corrections>.

Total TDOC Inmates, considered "backup" for TDOC purposes, refers to inmates sentenced to TDOC custody and held in local jails while awaiting transfer to a TDOC institution.