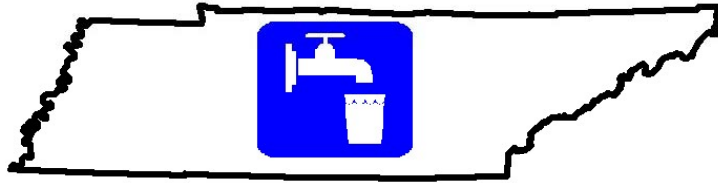




DIVISION OF WATER SUPPLY



Tennessee Source Water Assessment Report August 2003

Table of Contents

	Page
Table of Contents	3
Introduction	5
Tennessee's Source Water Assessment Zones	7
Source Water Assessment Zones for Ground Water Systems	7
Source Water Assessment Zones for Surface Water Systems	7
<u>Critical Source Water Protection Zone</u>	9
<u>Source Water Management Zone</u>	11
Susceptibility Analysis	11
Surface Water Intake Susceptibility	12
Ground Water (Well & Spring) Susceptibility	18
<u>Hydrogeology of Tennessee</u>	18
Susceptibility Determination Results	26
Community Water Systems	26
Noncommunity Ground Water Systems	32
Geographic Distribution of Susceptibility Rankings	34
Discussion of Susceptibility Scoring Factors	37
Significant Developments	38
Source Water Protection Goals and Progress	39
Appendix A: Public Water Systems and Their Water Sources	42
Appendix B: Scoring Matrix Table for Community Ground Water And Community/Noncommunity Surface Water Systems	86
Appendix C: Scoring Matrix Table for Noncommunity Ground Water Systems	108

Table of Contents (continued)

Illustrations

Figure 1: Public Water System Sources	6
Table 1: Nonpoint Source Concerns	10
Figure 2: Surface Water Intake Susceptibility Diagram	13
Table 2: Surface Water Intake Susceptibility Determination	14
Table 2A: Top 100 TRI Releases to Water in Tennessee	17
Figure 3: Aquifers of Tennessee	19
Figure 4: Karst Areas of Tennessee	20
Table 3: Ground Water Source Susceptibility Determination	21
Figure 5: Ground Water Source Susceptibility Diagram	25
Figure 6: Susceptibility Analyses for Source Water Protection Areas	26
Figure 7: Susceptibility Analyses for Surface Water Systems	27
Figure 8: Susceptibility Analyses for {Community} Ground Water Systems	27
Chart 1: Key Factors for Community and Noncommunity Surface Water Scores	28
Chart 2: Key Factors for Community Ground Water Scores	29
Figure 9: Ground Water Contamination for Public Water Systems	31
Figure 10: Susceptibility Analyses for Noncommunity Ground Water Systems	32
Chart 3: Key Factors for Noncommunity Ground Water Scores	33
Figure 11: Susceptibility for Community Ground Water System Sources	35
Figure 12: Susceptibility Analyses for PWS Using Surface Water	36

Introduction

Congress, the Environmental Protection Agency and the States are increasing their emphasis on the prevention of pollution, particularly in the protection of the raw water sources for public water systems. The initial step toward prevention of contamination of public water supplies came with the Federal Safe Drinking Water Act Amendments of 1986. At that time, each state was required to develop a wellhead protection program to protect the water source of public water systems relying on ground water (wells or springs). The new Source Water Assessment provisions of the Federal Safe Drinking Water Act 1996 Amendments expanded the scope of protection beyond ground water systems to include protection of the waters supplying surface water systems.

Section 1453 of the 1996 Safe Drinking Water Act (SDWA) Amendments (see Appendix A) required that all states establish Source Water Assessment Programs (SWAP), and submit a plan to the Environmental Protection Agency (EPA) by February 6, 1999 detailing how they would:

- Delineate source water protection areas.
- Inventory significant contaminants in these areas.
- Determine the susceptibility of each public water supply to contamination.

Tennessee's Source Water Assessment Program was approved in November of 1999. By April of 2003 the source water assessments of the community ground water systems and the source water assessments for the community and noncommunity surface water systems were completed. Shortly thereafter, they were mailed to the public water systems and made available on the State website: www.state.tn.us/environment/dws. The source water assessments for the noncommunity ground water systems have recently been completed as well and are included in this report.

Source water/wellhead protection areas for public water systems using ground water have been based on hydrogeologic considerations and/or modeling. In some instances a fixed radius around the well or spring for the smallest of water systems (community systems with less than 100 connections and noncommunity systems). Tennessee is converting fixed radius wellhead protection areas for small community water systems to geologically defined areas.

Source water protection areas for public water systems using surface water have been based on the portion of the watershed area upstream of the water intake using time of travel (the time it takes for water to travel a given distance) and a 1000 foot corridor on either side of the stream.

The community public ground water and surface water systems as well as the noncommunity surface water systems are shown in Figure 1 below. The water sources for community water systems sorted by county are given in Appendix A (including purchase only systems).

Public Water System Sources
Community Ground Water Systems
Community & Noncommunity Surface Water Systems

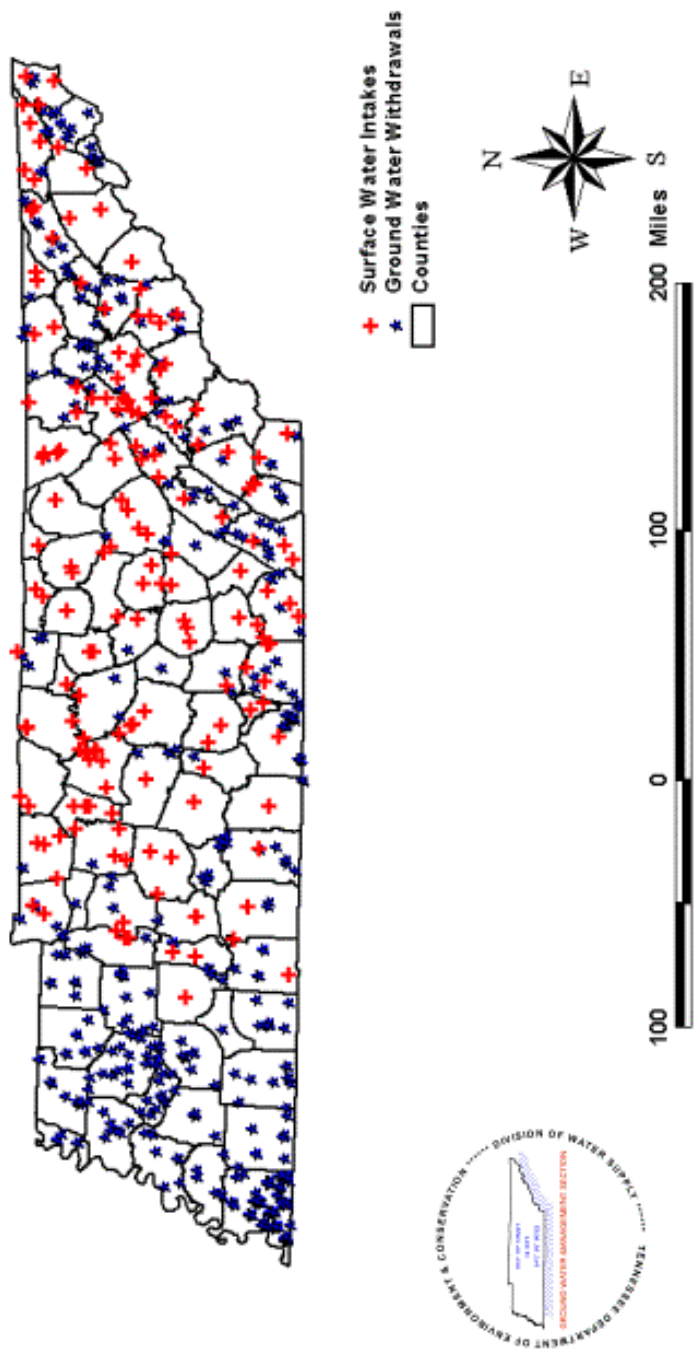


Figure 1

Tennessee's Source Water Assessment Zones

Source Water Assessment Zones for Ground Water Systems

For ground water systems, Tennessee continues to rely on its EPA-approved Wellhead Protection Program. Tennessee is using its existing wellhead protection area designations to define the source water assessment areas. There are improvements to the Wellhead Protection Program as a part of the Source Water Assessment Program with the addition of the susceptibility analysis and improved public access to the information.

There are two wellhead protection zones established for each well or spring -- an inner fixed-radius zone (Zone 1) around the well or spring to protect the immediate area from spills, etc., and a larger management zone (Zone 2) which takes into account the wide variety of geologic conditions across Tennessee to provide for long-term management for the well, wellfield or spring.

The emphasis for protection/management for ground water systems is from within the continuing wellhead protection program. In 2002, Tennessee's Safe Drinking Water Act was modified to give additional source water protection not available at the federal level. This is further discussed under the "Significant Developments" heading of this report. Additional wellhead protection/source water protection regulations are being worked on to complement the changes within the Tennessee Safe Drinking Water Act.

Tennessee has 247 community ground water systems and less than 400 noncommunity ground water systems (the number of noncommunity systems has been reduced significantly in the past four years). In addition, there are 22 "mixed" community systems that rely on both surface water and ground water. Since a number of water systems have more than one water source/wellfield, the number of community ground water source water protection areas is actually 291.

Source Water Assessment Zones for Surface Water Systems

Tennessee is using a simplified time-of-travel for the designation source water assessment/protection zones. The reasoning is based on using a flow velocity of 1 ft/sec, which is a high rate of flow just below or nearing flood conditions. For eight hours time of travel, this roughly corresponds to 5 miles upstream. For 24 hours time of travel this roughly corresponds to 15 miles upstream. Water systems in Tennessee are already required to have 24-hour storage capacity or other alternative measures for water supply, which effectively gives 48 hours lead time. Zone 1 (Source Water Protection Zone) has been designated as 5 miles upstream and Zone 2A (part of the Source Water Management Zone) has been designated as 15 miles upstream.

This method of delineation is less complex than using modeling for individual rivers and lakes, but and is actually more protective under most conditions. Normal flow conditions typically range from 0.2 to 0.4 ft/sec. At low flow conditions, where the waterbody is at

its lowest levels and there is little benefit of dilution, fifteen miles actually translates into several days upstream (greater than 200 hours). The same 5 and 15 miles upstream is also being used for lakes since their variable nature (including raising and lowering of water levels artificially via dam releases) would require complex and unreliable modeling. Here again 5 and 15 miles upstream are considerably more conservative and protective, since flow would generally be expected to be lower in lakes than rivers. In the case of city reservoirs/very small watershed reservoirs, the feeding stream may not continue back up for 5 miles, in which case the entire watershed has been assessed.

As a part of the individual assessments a “survey corridor” of 1000 feet to either side of the stream has been designated within which potential contaminant sources were inventoried. This corridor more than encompasses the 100 year flood zone, which is typically 200 - 500 feet off of the stream (TVA personal communication). Inventories also include to within 1/2 mile downstream of the intake to account for the possibility of backflow conditions. All tributaries to the stream where the intake is located which are “blue line” streams {perennial streams which register as solid blue lines on USGS 7 ½ topographic maps} were also included in the survey up to the appropriate distance from the intake. In actuality, in simplistic cases where the area of concern falls essentially within one HUC11 unit, the entire unit was inventoried rather than restricting the inventory to the 1000 foot corridor. This has proven to be a more convenient and less time consuming method in these small subwatersheds.

For purposes of the assessments, there have been two zones of protection designated for each surface water intake (unless there is a consolidation of multiple intakes along a stream reach):

- 1) Critical Source Water Protection Zone - five miles upstream of the intake and along any major tributaries with a 1000 ft corridor.
- 2) Source Water Management Zone (SWMZ) - encompasses the remainder of the appropriate watershed within that HUC unit.

Zone A (Inner SWMZ) 5 - 15 miles upstream of the intake and major tributaries with a 1000 foot corridor.

Zone B (Outer SWMZ) from 15 miles to the upper end of the watershed

There are a total of 129 community systems using surface water intakes (including the 22 mixed systems) and 8 noncommunity systems. There are a total of 161 source water protection areas for community surface water systems and 8 source water protection areas for noncommunity surface water systems.

Three of the community surface water systems are in West Tennessee with the remainder in Middle and East Tennessee. There has been no distinction of community versus noncommunity systems in the Source Water assessments for surface water intakes.

Critical Source Water Protection Zone

Within the proposed critical source water protection zone, significant potential contaminant sources were verified in the field with global positioning satellite (GPS) units by the Division of Water Supply's contractor, the Tennessee Association of Utility Districts (TAUD). This provided much more accurate locational information than from existing databases. Activities within the critical source water protection zone included:

- 1) Confirming intake location
- 2) Interviewing water system staff
- 3) Confirming permitted stream discharge (NPDES) locations
- 4) Confirming permitted storm water discharge locations
- 5) Inventorying agricultural use
 - a) Row crop
 - b) Pasture
 - a) Animal feeding operations/waste lagoons*
- 6) Performing a "windshield survey" for other potential nonpoint source activities
- 7) Confirming locations of other significant industrial activities {using business phone database and narrowing the search using Standard Industrial Classification (SIC) codes}
- 8) Confirming locations for landfills, Superfund sites, hazardous waste handlers/generators, TRI (Toxic Release Inventory) release sites
- 9) Performing a "windshield survey" of facilities and activities for best management practices (good versus poor "housekeeping")

*For purposes of the source water assessments, animal feeding operations were inventoried that have above the threshold number of animals given below and (1) stable, confine and feed or maintain animals for a total of 45 days or more in any 12 month period and that (2) do not sustain crops, vegetative forage growth or post harvest residues in the normal season over any portion of the facility.

- 1) 9,000 or more chickens (one commercial chicken house typically holds 24,000 birds) {meets the State's Class II CAFO definition}
- 2) 100 or more swine (greater than 55 pounds)
- 3) 50 or more cattle

These threshold numbers are for inventory purposes only to simplify the inventory process and are below those given for concentrated animal feeding operations (CAFO) defined in Tennessee's Strategy for Animal Feeding

Operations (with the exception of chickens) developed jointly by the Department of Agriculture and the Department of Environment and Conservation.

There has been considerable emphasis placed on facilities with storm water discharge permits within the appropriate watersheds upstream of the intakes. This is the most complete database relating to surface water discharges and potential contaminant sources in the vicinity of streams. Unfortunately, the locational information is poor at best and improving that data has been a significant part of the inventorying process. These facilities are required by regulation to develop Pollution Prevention Plans that take a comprehensive look at facility operations and address the same environmental concerns that need to be addressed for the source water assessments.

The concerns that have been the focus of the nonpoint source portion of the inventory are given in the table below. Owing to the variety and potential number of nonpoint source problems and nature of the source water assessments, this has obviously been a cursory look and not a complete detailed assessment of nonpoint source problems.

Table 1					
	Nonpoint	Source	Concerns		
Row cropping	grassy buffer strips near streams and rivers	grassed waterways in fields	riparian zones along streams	stabilized streambanks	contour farming on steeper slopes
Livestock	fenced streams	riparian zones along streams	proper disposal of animal waste	improperly located or maintained animal waste lagoons (near waterbody or sinkhole)	proper disposal of dead animals
Construction	proper erosion control/gradients, terraces; vegetative growth	proper sediment retention/silt fences and bales; ponds			
Riparian Zone Removal	clearing of stream banks	unfenced stretches of streams, lakes to significant numbers of livestock			
Urban Runoff: roads, golf courses, parking lots, etc.	untreated runoff from large impermeable surfaces	uncontrolled flow of storm event runoff from impermeable surfaces to streams and sinkholes	excessive Pesticide/fertilizer applications to lawns, golf courses		
Forestry	improper placement/maintenance of haul roads	insufficient riparian zones along waterbodies	improper use of pesticides along waterbodies		
Illegal Dump Sites	usage of any land as a dumping ground	discarding objects into waterbodies or sinkholes			
Abandoned/unreclaimed Mineral Extraction (quarries, mines, oil & gas)	contaminated surface waters from mining operations reaching neighboring waterbodies	seepage of ground water from spoil piles to waterbodies	abandoned/poorly maintained oil & gas wells	poorly maintained tank batteries (storage tanks from oil & gas operations)	abandoned/unreclaimed gravel, phosphate and limestone quarries
Failing septic	seeping of septage	straight pipes into			

tanks	to the surface	waterbodies or sinkholes			
Well vicinity protection	placement of septic fields too close to well	pesticide/fertilizer mixing too close to well	livestock too close to well	Animal waste lagoons too close to well	
Pesticide Mixing & Storage	mixing of pesticides/fertilizer on bare ground	mixing of pesticides/fertilizer too close to waterbodies/sinkholes/wells	storage of pesticides/fertilizer too close to sinkholes/waterbodies/wells	improper storage of pesticides/fertilizer w/ exposure to the elements	Improper disposal of pesticides & fertilizer

Source Water Management Zone

Within the proposed Source Water Management Zone (Zone 2), Tennessee Department of Environment and Conservation (TDEC) and TAUD have relied on electronic media/TDEC files and databases to provide the information in a somewhat less accurate but less manpower-intensive manner. For the Inner Zone (Zone A) of the Source Water Management Zone, higher risk contaminant sources have still been located in the field such as:

- 1) TRI release sites
- 2) Permitted discharge (NPDES) sites
- 3) Permitted storm water discharge locations
- 4) Targeted high risk SIC code list from phone database
- 5) Animal feeding operations/waste lagoons

The inventory for the Outer Zone (Zone B) of the Source Water Management Zone has been with electronic databases only and has focused on known contaminant sources which have affected the water intake or caused the intake to be shut down as a precautionary measure.

Susceptibility Analysis

Tennessee is blessed with an abundance of high quality ground water and surface water. Prevention of contamination is a critical element in the protection of these waters if Tennesseans are to continue to benefit from these high quality waters. There are certain natural and man-made factors which make certain water sources more susceptible to contamination. All water sources should be considered to have some susceptibility to contamination since no water source is completely immune. There are specific geologic and hydrologic settings that make the water source more vulnerable due to natural conditions. There are also certain man-made processes and activities that put the water sources more susceptible to contamination due to the proximity of these potential contaminant sources.

For the purposes of Tennessee's Source Water Protection Program, susceptibility is defined as: the potential for contamination of a public water system's raw water source at levels above drinking water standards or other health-based concerns; based on the

likelihood and character of releases from potential contaminant sources and human activities within the areas hydrologically upgradient of the raw water source.

Determining the relative potential risk of contamination for each water system intake and well or spring allows EPA and the states to prioritize resources in the protection of water sources and also gives the water system information to better manage the water supply. Tennessee has developed a susceptibility analysis based on a series of yes/no potential contamination factors to keep the susceptibility evaluation as objective as possible. These factors are then incorporated into a pie chart, with each factor as a separate “slice.” The size of the slice has been assigned a percentage according to concern (e.g., contamination detected at an intake is a high concern and a larger slice) based the experiences on senior level technical staff within the Division of Water Supply and does not change from evaluation to evaluation. The key to Tennessee’s Susceptibility Analysis Method is whether the slice is a yes (shaded dark) or no (unshaded).

It is very difficult with current resources to inventory urban nonpoint source problems. These tend to be pervasive in the urban environment - parking lots, runoff from yards with fertilizer and herbicides, etc. Unless the Division has information to indicate otherwise, this “slice” will score as a yes in urban settings (e.g., indicated by urban coverage on topographic map) by default. If there are serious nonpoint source problems, the “multiplicity” factor will also score. Golf courses and cemeteries have also been scored under the urban nonpoint source category due to similar contaminant concerns.

To address multiple sources under a specific category, a separate “multiplicity factor” has been added. Where there are multiple sources under a particular category, the “multiplicity” slice will also be scored.

Intakes, wells/wellfields or springs that have a larger percentage of the pie chart shaded in on their susceptibility diagram are considered more susceptible to contamination. There are separate sets of factors for surface water and ground water.

For purposes of Tennessee’s Source Water Assessment Program, high susceptibility is greater than 40% of the susceptibility diagram (pie chart) filled in from a summation of the susceptibility factors; medium susceptibility is 20% - 40% filled in and low susceptibility is less than 20% filled in.

Surface Water Intake Susceptibility

The key areas that have been considered for scoring surface water intakes are:

Impacted intake or stream	30%
Potential contamination from industrial/commercial activities	20%
Potential nonpoint source issues	15%
Reported industrial release	10%
Transportation corridor	10%
Permitted discharges	8%

Multiple potential contaminant sources within a category 7%

The pie chart for surface water intakes has been given as Figure 2 below. The detailed scoring method for surface water system intakes is given in Table 2 following Figure 2.

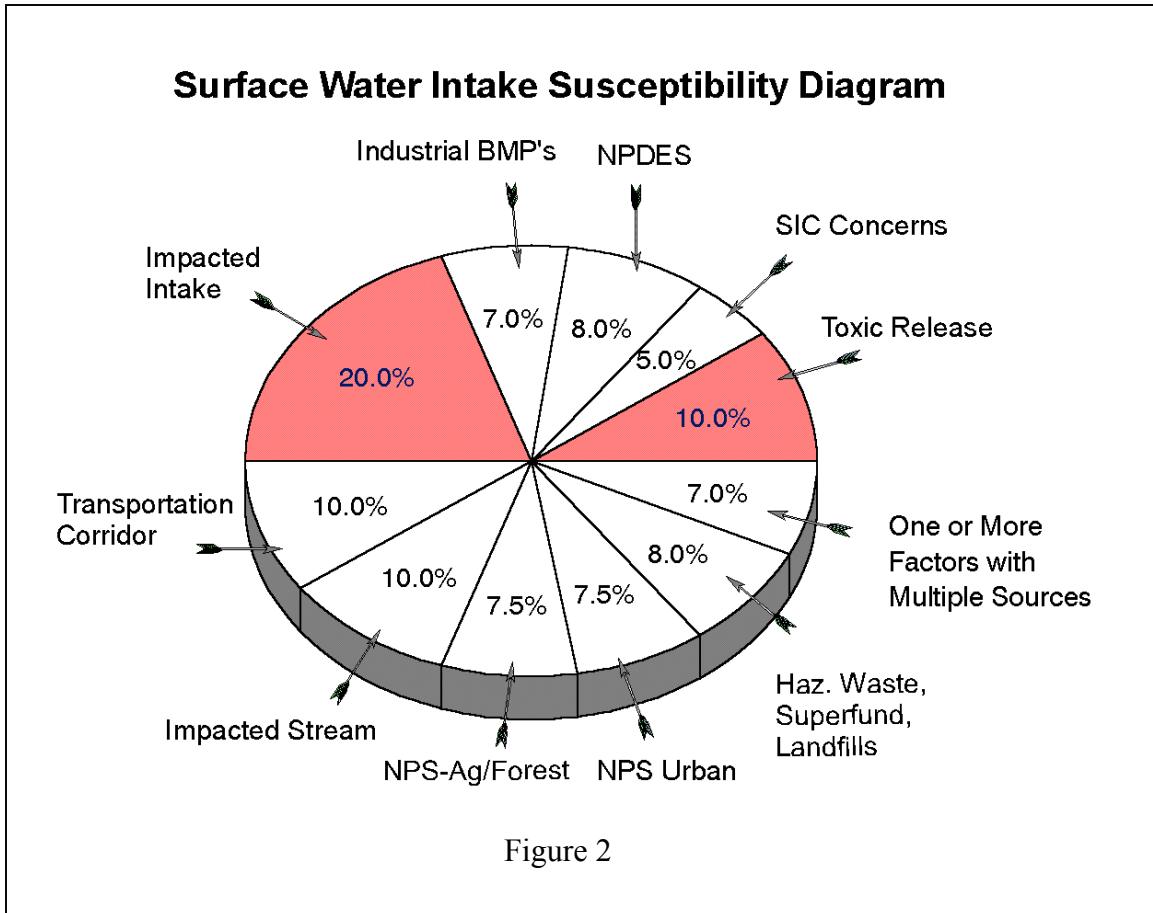


Table 2
Surface Water Intake Susceptibility Determination

TRIS Releases to Water

Yes No

High toxicity release (Hazard Ranking of 2 or 3 in Sax; Hazardous Properties of Industrial Materials) upstream of the intake within the watershed or ½ mile downstream.

Large quantity release of lower toxicity (greater than 50 gallons or 100 kg) less than 15 miles upstream or ½ mile downstream.

The “multiplicity factor” will also be scored where there are multiple TRI releases reported upstream of the intake.

Facilities/Activities of Concern within a Watershed based on SIC Codes **

Yes No

Facilities of concern (based on priority SIC Codes identified below) less than 5 miles upstream or ½ mile downstream of the intake which are within the 1000 ft corridor of the stream or tributary.

The “multiplicity factor” will also be scored where there are multiple facilities with SIC code concerns upstream of the intake.

**The Standard Industrial Classification (SIC) Codes of concern were based on the top 100 Toxic Release Inventory releases to water in Tennessee reported from 1993 – 1996 (see Table 1A below). Additional facility/activity types are listed which may be a potential problem as a result of the types of materials and/or waste handled or which have resulted in previous Departmental investigations/action.

National Pollutant Discharge Elimination System (NPDES) Discharges

Yes No

Municipal/Industrial NPDES discharges within 15 miles upstream or ½ mile downstream of the intake within the 1000 ft corridor of the stream or tributary.

The “multiplicity factor” will also be scored where there are multiple facilities with NPDES discharges upstream of the intake.

Known Impact to Water System

Yes No

Water system has had to temporarily shut down intake due to contamination or as a precautionary measure.

Table 2 (continued)

Water system has had to increase treatment due to contamination threat or problems.

Contaminants for which there are primary Drinking Water Standards have been detected at or in the vicinity of the intake.

Major Transportation Corridor

Yes No

Within fifteen miles upstream of the intake or ½ mile downstream of the intake there are railways or major highways (two lanes or more) within the 1000 ft corridor or bridges or pipelines (excluding water lines).

The stream upon which the intake occurs is subject to barge traffic.

Impacted Stream

Yes No

Within 15 miles upstream of the intake, the stream upon which the intake is located or a tributary of that stream has been designated as a 303d listed stream under the Clean Water Act.

NonPoint Source Impacts – Agriculture and Forestry

Yes No

Nonpoint Source concerns related to agricultural or forestry practices have been identified within 15 miles upstream of the intake.

The “multiplicity factor” will also be scored where there are multiple agricultural and forestry nonpoint source concerns upstream of the intake.

NonPoint Source Impacts - Urban

Yes No

Nonpoint Source concerns related to urban runoff have been identified within 15 miles upstream of the intake.

Unless the Division of Water Supply has information to indicate otherwise, this “slice” will score as a yes in urban settings (e.g., indicated by urban coverage on topographic map) by default.

The “multiplicity factor” will also be scored where there are multiple urban nonpoint source concerns upstream of the intake.

Table 2 (continued)

Facilities Handling Hazardous Waste; Landfills and Superfund Sites

Yes No

Permitted RCRA facility (hazardous waste treatment, storage or disposal facility), hazardous waste generator, municipal or industrial landfill or Superfund site within 15 miles upstream or ½ mile downstream of the intake within the 1000 ft corridor of the stream or tributary.

The “multiplicity factor” will also be scored where there are concerns from multiple facilities upstream of the intake.

Industrial Best Management Practices

Yes No

Spills, diking problems, polluted runoff, etc. identified in the Pollution Prevention Plan required for Storm Water General NPDES Storm Water Discharges as described in Rule 1200-4-10-.04 (5) within 15 miles upstream or ½ mile downstream of the intake within the 1000 ft corridor of the stream or tributary.

Identified “poor housekeeping” practices (leaks and spills; improper drum storage; waste disposal or material storage) from field assessment activities within 15 miles upstream or ½ mile downstream of the intake within the 1000 ft corridor of the stream or tributary.

Identified problems from mining or oil and gas production activities within 15 miles upstream or ½ mile downstream of the intake within the 1000 foot corridor of the stream or tributary.

**Table 2A
Top 100 TRI Releases to Water in Tennessee**

SIC Code (Major)	Category	Number of Facilities
20	Food & Kindred Products	3
22	Textile Mill Products	2
24	Lumber & Wood Products	2
26	Paper & Allied Products	6
27	Printing & Publishing	2
28	Chemicals & Allied Products	22
29	Petroleum & Coal Products	1
30	Rubber & Miscellaneous Plastics	9
31	Leather & Leather Products	1
32	Stone, Clay & Glass Products	2
33	Primary Metal Industries	15
34	Fabricated Metal Products	9
35	Industrial Machinery & Equipment	5
36	Electronic & Other Electrical Equipment	7
37	Transportation Equipment	6
39	Miscellaneous Manufacturing Industries	3
49	Electric, Gas & Sanitary Services (Includes Landfills)	1
87	Engineering & Management Services	1
97	National Security/Airplane Production	1

Additional Facilities of Concern

25 Furniture Manufacture
 42 Trucking/Storage Services
 44 Water Transportation & Marinas
 47 Freight Transportation Services
 5015 Used Motor Vehicle Parts (Salvage Yards)
 5093 Scrap and Waste Materials (Metal Recycling)
 5171, 5172 Petroleum Bulk Storage
 5191 Farm Supplies, Agricultural Chemicals
 5541 Gasoline Service Stations
 5989 Fuel Dealers Retail
 59990 Feed & Farm Supply Dealers Retail
 7342 Disinfecting & Pest Control Services
 75 Automobile Related Services
 7389 Commercial Part B Hazardous Waste Treat, Store, Disposal

Ground Water (Well & Spring) Susceptibility

Tennessee's Wellhead Protection Program for public ground water systems began in 1994. The only significant modification necessary to comply with the Source Water Assessment requirements was the addition of the susceptibility analysis for the water source (well/wellfield or spring).

There are two wellhead protection zones established for each well or spring -- an inner zone (Zone 1) around the well or spring to protect the immediate area from spills, etc., and a larger management zone (Zone 2) which takes into account the wide variety of geologic conditions across Tennessee to provide for long-term management for the well, wellfield or spring.

Hydrogeology of Tennessee

The geology of Tennessee makes certain aquifers more vulnerable to contamination where there is no confining layer or naturally filtering layer to deter contamination from reaching the ground water. The unconfined sand aquifers of West Tennessee (particularly the Memphis Sand Aquifer) are vulnerable to contamination as are the karst limestone aquifers of Middle and East Tennessee (see Figure 3 and 4 on the following pages). For further discussion of the hydrogeology of Tennessee, the reader is referred to the Source Water Assessment Submittal available on the Division of Water Supply's website: www.state.tn.us/environment/dws.

Several factors were considered in determining the susceptibility of a well, spring or wellfield, with each factor as the "slice" of a pie chart. The size of each slice was determined by weighting the factors as to level of concern. If more than 20% but less than 40% of the pie chart is filled in, the source will be considered moderately susceptible and if more than 40% of the pie chart is filled in, the source will be considered highly susceptible. Less than 20% is considered low susceptibility. An example susceptibility diagram has been included as Figure 5. The percentages assigned to each factor are given within the slices in the figure. Note that for ground water susceptibility determinations, there is a hybridization of vulnerability (geologic) and susceptibility factors.

To address multiple sources under a specific category, a separate "multiplicity factor" has been added. Where there are multiple sources under a particular category, the "multiplicity" slice has also been scored. This has been done for nonpoint source, toxic release, Hazardous Waste/Superfund, UIC and SIC concerns.

AQUIFERS OF TENNESSEE

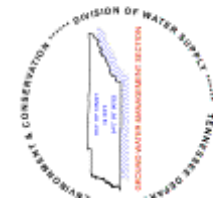
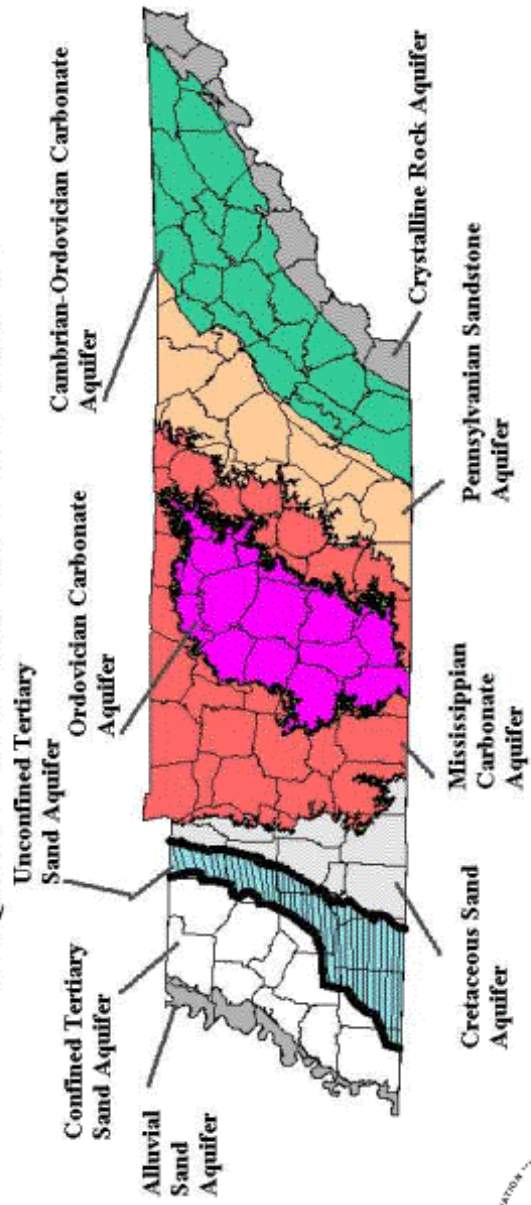
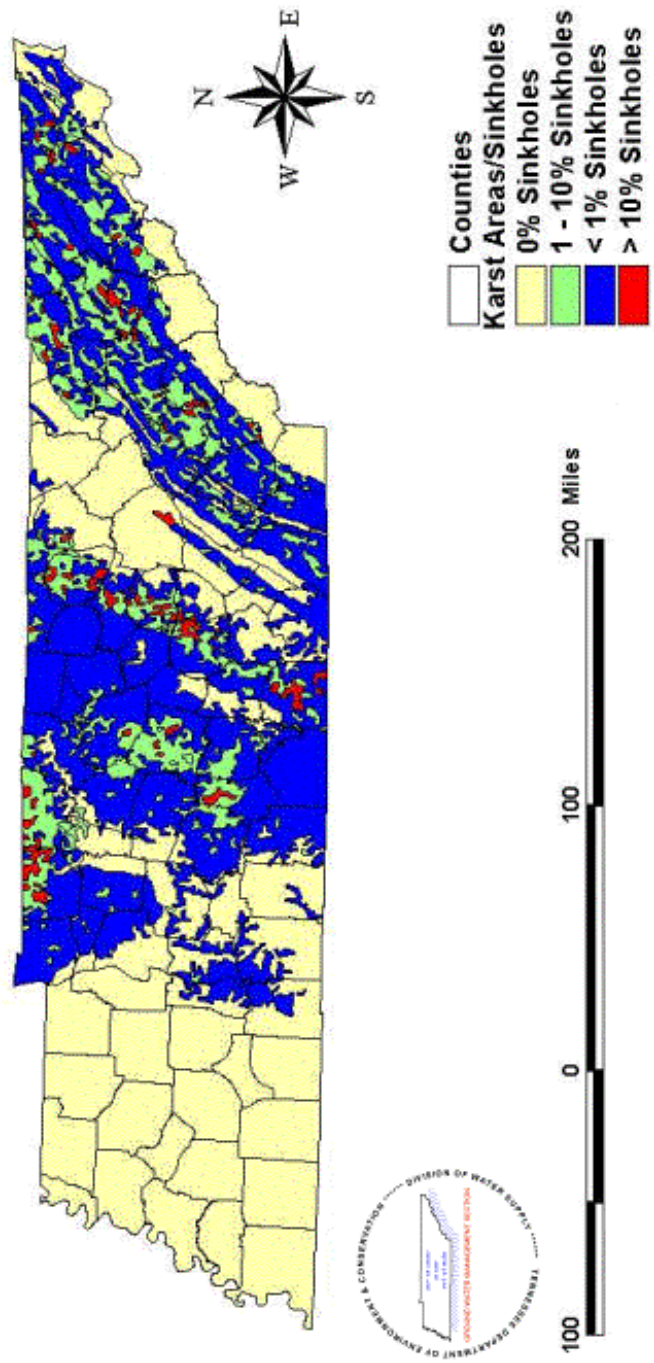


Figure 3

Karst Areas of Tennessee



Karst = Limestone/Dolomite Areas Characterized by Sinkholes, Springs and Caves

Figure 4

Key areas for scoring ground water sources are:

- Geologic factors: 21%
- Ground Water Contamination: 20%
- Potential Contamination from Industrial/Commercial Activities: 13%
- Potential NonPoint Source Issues: 13%
- Reported Industrial Release: 7%
- Permitted Underground Discharges: 5%
- Transportation Corridor: 5%
- Multiple category sources, significant source adjacent to well or spring: 14%

The detailed scoring method for ground water system wells and springs is given in Table 3 below:

<p>Table 3</p> <p>Ground Water Source Susceptibility Determination</p> <p><u>Vulnerability Factors</u></p> <p>Ground Water Under the Influence of Surface Water</p> <p><input checked="" type="checkbox"/> Yes <input type="checkbox"/> No</p> <p>Well or spring has tested and determined to be under the influence of surface water. A wellfield would be considered under the direct influence if one or more wells within it test positive for influence.</p> <p>For susceptibility, generic karst and GWUDI have separate scores. There is karst and there is KARST. Systems under the direct influence are in rapid flow, mature conduit karst, which is of considerably more concern than those systems in karst that are not under the direct influence. Wells/springs scored for GWUDI will automatically also be scored for karst.</p> <p>Karst/Fractured Rock Aquifer or Unconfined Sand Aquifer</p> <p><input checked="" type="checkbox"/> Yes <input type="checkbox"/> No</p> <p>Well or spring is within karst/fractured rock area of the state or well is in unconfined sand aquifer in West Tennessee.</p>
--

Table 3 (continued)

Susceptibility Factors

Zone 1 Wellhead Protection Area

Yes No

Significant potential source of contamination within Zone 1 of the Wellhead Protection Area. Well integrity problems also score under the Zone 1 factor as do abandoned wells within Zone 1.

The “multiplicity factor” will also be scored where there are multiple potential sources within Zone 1 of the Wellhead Protection Area.

TRIS Releases

Yes No

TRIS Release to water or land within Zone 2 of wellhead protection area.

The “multiplicity factor” will also be scored where there are multiple TRIS releases within Zone 2 of the Wellhead Protection Area.

Facilities/Activities of Concern within the Wellhead Protection Area based on SIC Codes

Yes No

Facilities/Activities of Concern within the Zone 2 Wellhead Protection Area based on SIC Codes (same SIC Codes as for surface water intakes).

The “multiplicity factor” will also be scored where there are multiple facilities of concern within Zone 2 of the Wellhead Protection Area.

Underground Injection Control (UIC) Discharges

Yes No

Table 3 (Continued)

Class V injection wells (shallow nonhazardous) within Zone 2 of the Wellhead Protection Area. Class V wells include vertical waste disposal wells and commercial/industrial septic tanks, floor drains and large capacity (serving more than 20 persons) septic tanks.

The “multiplicity factor” will also be scored where there are multiple UIC discharges within Zone 2 of the Wellhead Protection Area.

Impacted Water System/Ground Water

Yes No

Contaminants for which there are primary Drinking Water Standards have been detected in the well or spring.

Water system has had to increase treatment due to contamination threat or problems.

Ground water contamination has been detected within Zone 2 of the Wellhead Protection Area or the presence of monitoring wells within Zone 2.

Major Transportation Corridor

Yes No

Within Zone 2 of the Wellhead Protection Area there are railways or major highways (two lanes or more) within the 1000 ft corridor or bridges or pipelines (excluding water lines).

NonPoint Source Impacts – Agriculture and Forestry

Yes No

Nonpoint Source concerns related to agricultural or forestry practices have been identified within Zone 2 of the Wellhead Protection Area.

The “multiplicity factor” will also be scored where there are multiple agricultural and forestry nonpoint source concerns within Zone 2 of the Wellhead Protection Area.

Table 3 (continued)

NonPoint Source Impacts - Urban

Yes No

Nonpoint Source concerns related to urban runoff have been identified within Zone 2 of the Wellhead Protection Area.

Unless the Division of Water Supply has information to indicate otherwise, this “slice” will score as a yes in urban settings (e.g., indicated by urban coverage on topographic map) by default.

The “multiplicity factor” will also be scored where there are multiple urban nonpoint source concerns within Zone 2 of the Wellhead Protection Area.

Facilities Handling Hazardous Waste; Landfills and Superfund Sites

Yes No

Permitted RCRA facility (hazardous waste treatment, storage or disposal facility), hazardous waste generator, municipal or industrial landfill or Superfund site within Zone 2 of the Wellhead Protection Area.

The “multiplicity factor” will also be scored where there are concerns from multiple facilities within Zone 2 of the Wellhead Protection Area.

Industrial Best Management Practices

Yes No

Spills, diking problems, polluted runoff, etc. identified in the Pollution Prevention Plan required for Storm Water General NPDES Storm Water Discharges as described in Rule 1200-4-10-.04 (5) within Zone 2 of the Wellhead Protection Area.

Identified “poor housekeeping” practices (leaks and spills; improper drum storage; waste disposal or material storage) from field assessment activities within Zone 2 of the Wellhead Protection Area.

Identified problems from quarrying, mining or oil and gas production activities within Zone 2 of the Wellhead Protection Area.

Ground Water Source Susceptibility Diagram

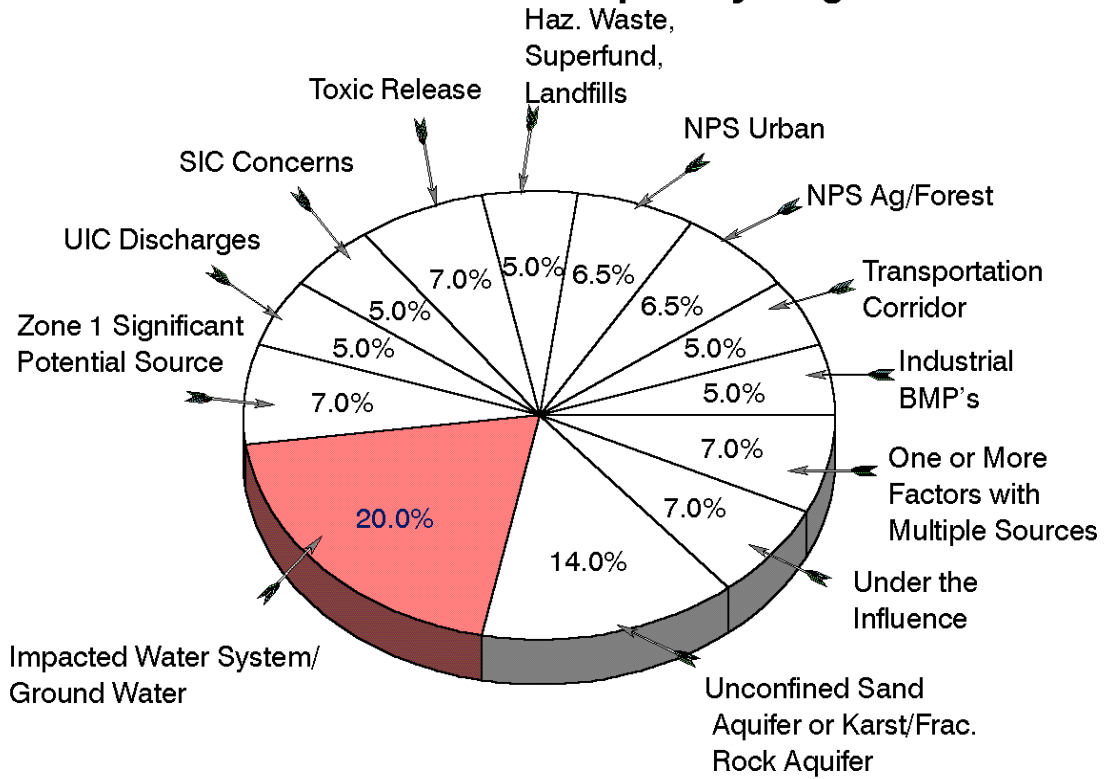
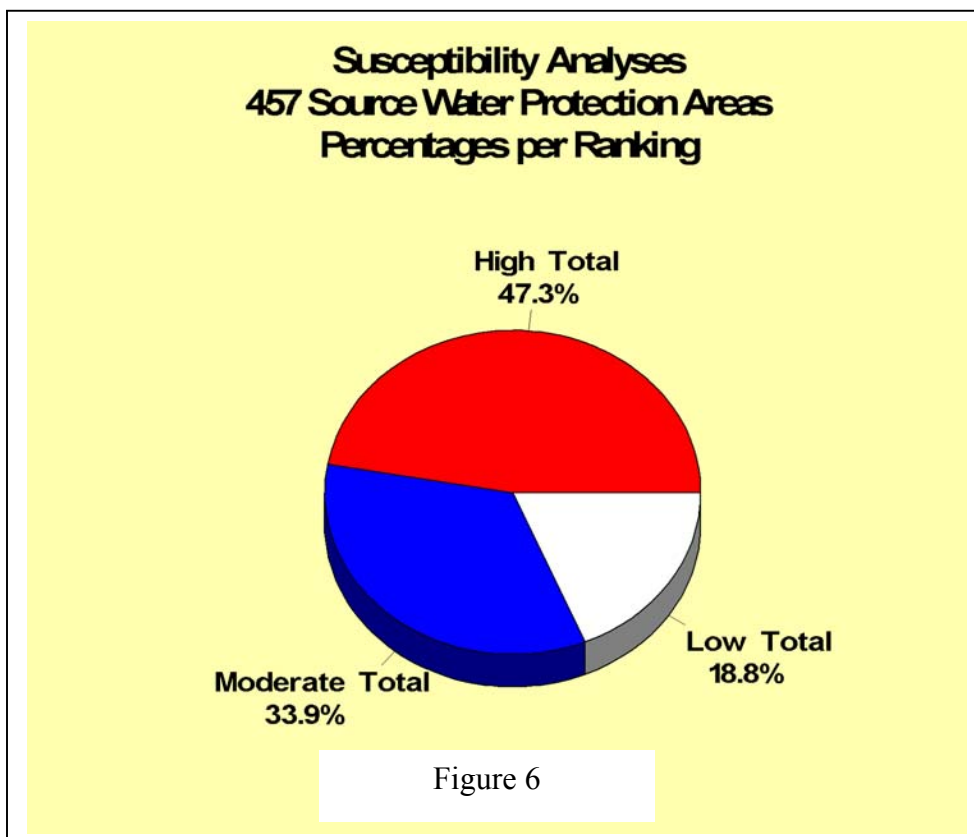


Figure 5

Susceptibility Determination Results

Community Water Systems

Approximately 47.3% of the 457 source water areas for community surface water systems and ground water systems in Tennessee scored as high susceptibility, 33.9% moderate and 18.8% low (illustrated in Figure 6). There is some difference in the percentages for the moderate and low susceptibilities between ground water versus surface water sources, but the highs are nearly identical. The highs are 47.8% for surface water and 47.1% for ground water (Figures 7 and 8). The moderates are 28.9% for surface water and 36.8% for ground water and the lows are 23.5% for surface water and 16.2% for ground water. The higher level of moderate susceptibilities for ground water systems (39% versus 32%) is probably a function of the geologic factors that are used for ground water systems and are not used for surface water systems. The eight noncommunity surface water systems are not considered statistically significant and have been included with community surface water systems.



**Susceptibility Analyses for Surface Water Systems
166 Source Water Protection Areas
Percentages per Ranking**

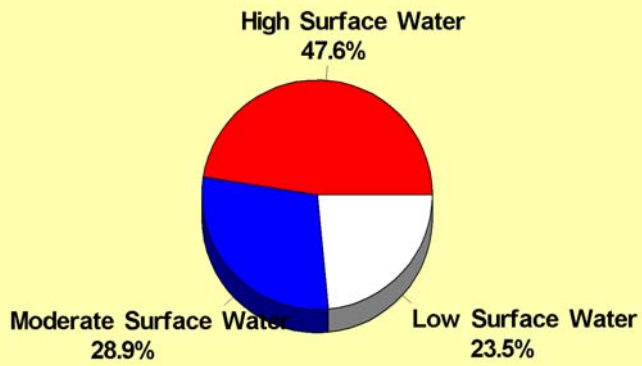


Figure 7

**Susceptibility Analyses for Ground Water Systems
291 Source Water Protection Areas
Percentages per Ranking**

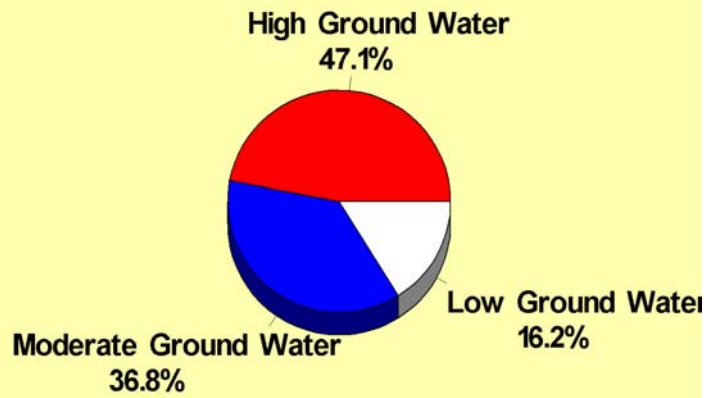
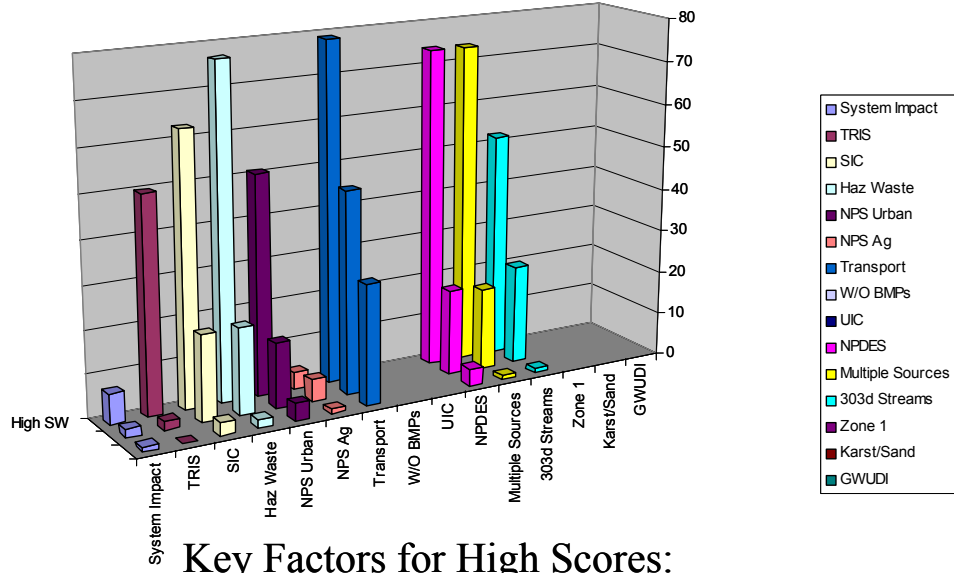


Figure 8

The key factors in the scoring for surface water intakes are shown in Chart 1 below:

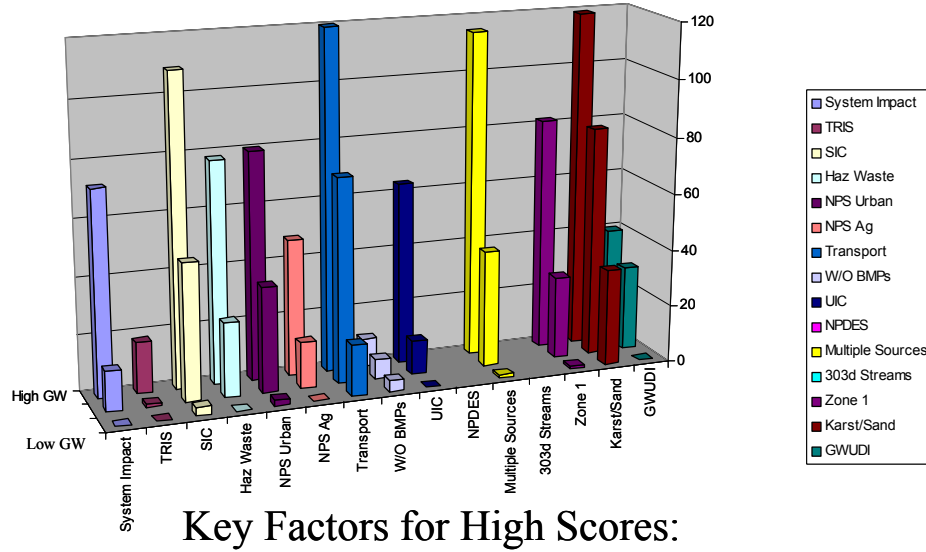


Key Factors for High Scores:

- **TRIS Releases Upstream**
- **Facilities based on SIC Code Concerns**
- **Hazardous Waste Facilities/ Superfund**
- **Nonpoint Source Urban**
- **Transportation**
- **NPDES Discharges Upstream**
- **Multiple Contaminant Sources Within a Category**
- **303d Listed Streams**

Chart 1
Key Factors for Community
And Noncommunity
Surface Water Scores

They key factors for scoring community public ground water wells and springs are shown in Chart 2 below:



- Key Factors for High Scores:**
- **Water System Impact**
 - **Facilities based on SIC Code Concerns**
 - **Hazardous Waste Facilities/ Superfund**
 - **Nonpoint Source Urban**
 - **Transportation**
 - **Underground Injection Activities**
 - **Multiple Contaminant Sources within a Category**
 - **Risks within Zone 1 (Inner) Wellhead Protection Area**
 - **Karst/Ground Water Under the Direct Influence**

Chart 2
Key Factors for Community
Ground Water Scores

Existing ground water contamination is a significant factor for community ground water systems. A number of ground water systems across Tennessee have already been impacted, typically by chlorinated solvents or petroleum products (Figure 9). These systems have already demonstrated that they are at considerable risk and have been scored accordingly. A scoring matrix table for each community ground water, community and noncommunity surface water source sorted by county is given in Appendix B. Note where multiple sources were in close proximity to each other (such as wellfields), they have been dealt with as a single source.

Ground Water Contamination for Public Water Systems

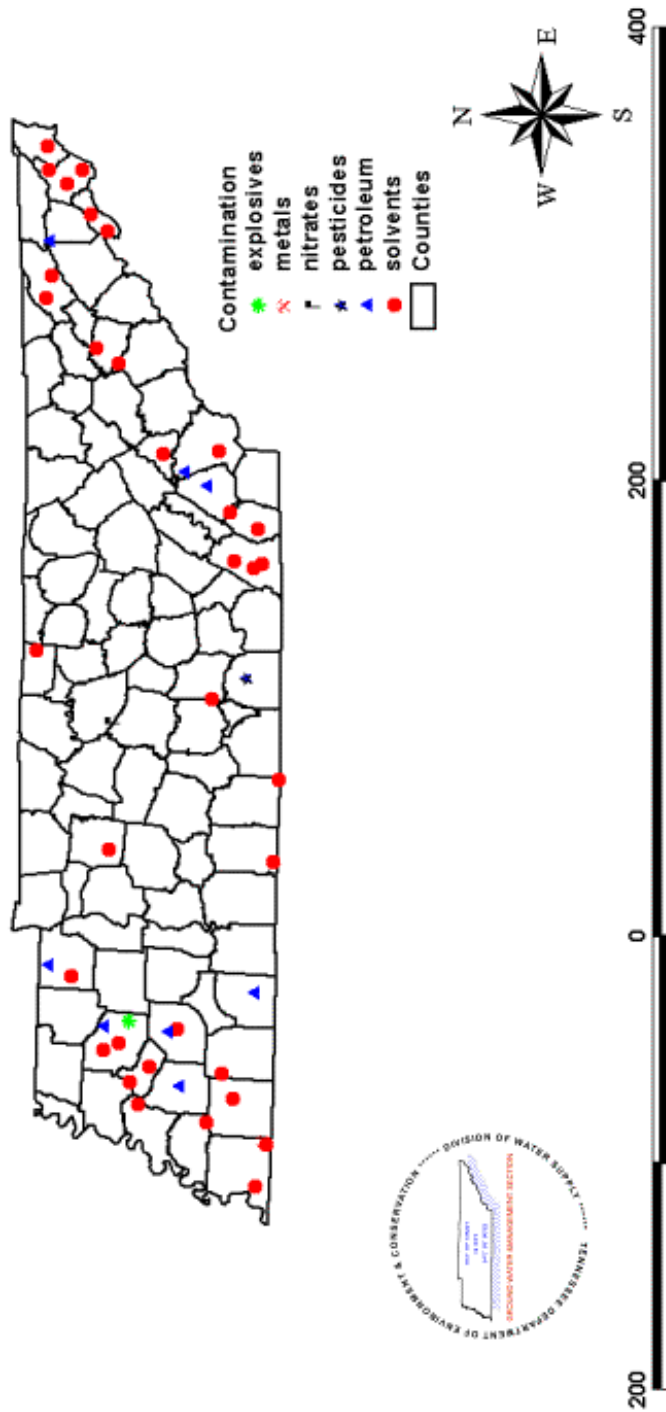
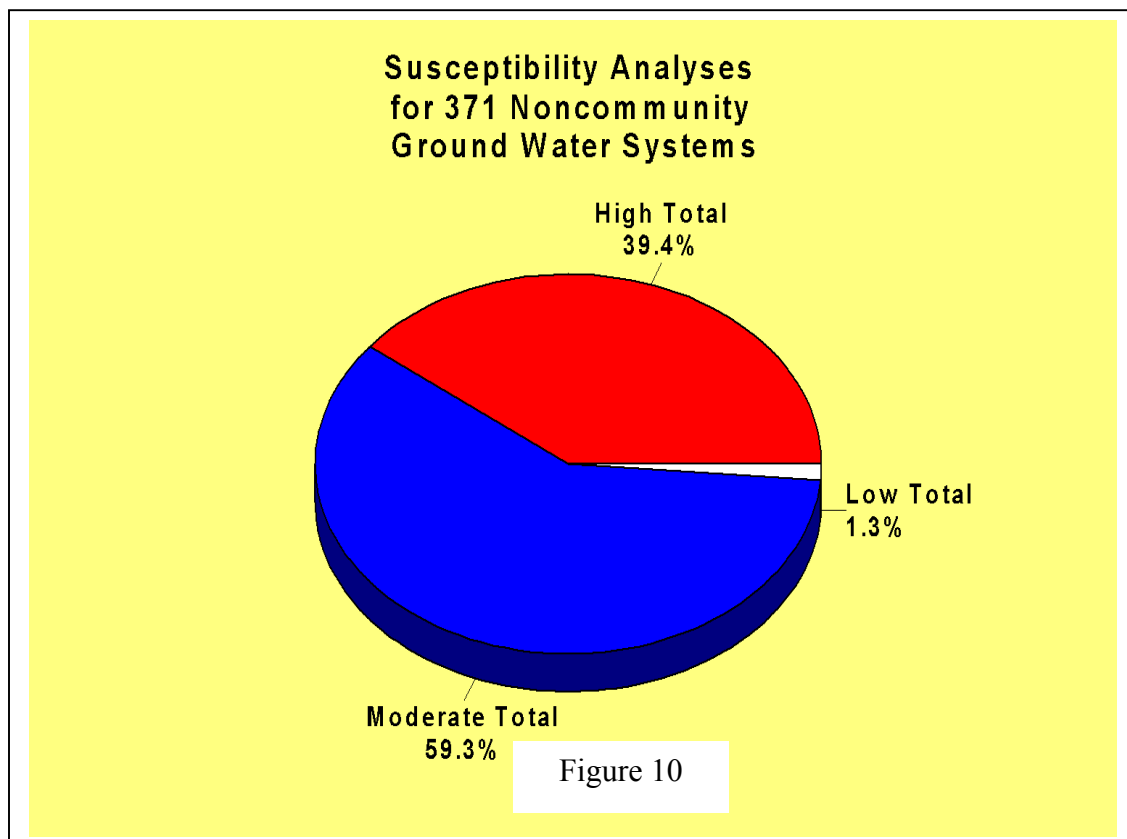


Figure 9

Noncommunity Ground Water Systems

For the 370 noncommunity ground water systems, approximately 39.4% scored as high susceptibility, 59.3% moderate and 1.3% low (Figure 10). A significant factor in scoring is that there is typically a large capacity septic tank within zone 1 of the wellhead protection area; which scores it for underground injection and as a significant potential source in Zone 1. All of the systems are in unconfined sands, karst or fractured rock, which raises their scores as well and accounts for the large number of moderate and high systems.

Another significant factor in scoring is contamination. A number of systems (130) have shown ground water impact – which is nearly always bacterial contamination. Since it only takes one positive bacterial sample to score for impacted water system even if the problem was corrected, this is a major factor in the high scores. Significant scoring factors are illustrated in Chart 3. A scoring matrix table for noncommunity ground water systems sorted by county is given in Appendix C.



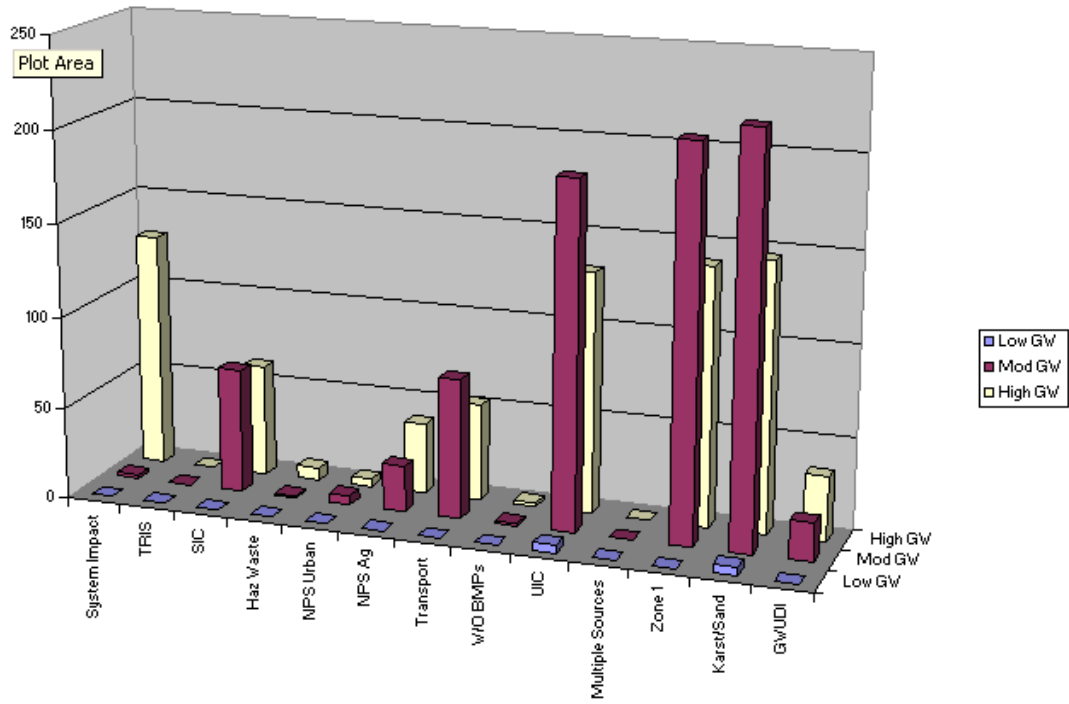


Chart 3
Key Factors for Noncommunity
Ground Water Scores

Geographic Distribution of Susceptibility Rankings

The community ground water sources with high rankings are spread across the state (Figure 11), which is in large portion a function of the geology across the state. The unconfined portion of the sand aquifers in West Tennessee and karst areas of Middle and East Tennessee both raise the susceptibility scores for the water system sources.

For surface water intakes on a statewide basis, there is also a considerable dispersal of the highs (Figure 12). There are very few in West Tennessee since there are very few intakes in West Tennessee (only three). The highs are also indicative of where Tennessee's industrial base is located – near Nashville in Middle Tennessee and along the Valley and Ridge of East Tennessee.

Susceptibility for Community Ground Water System Sources

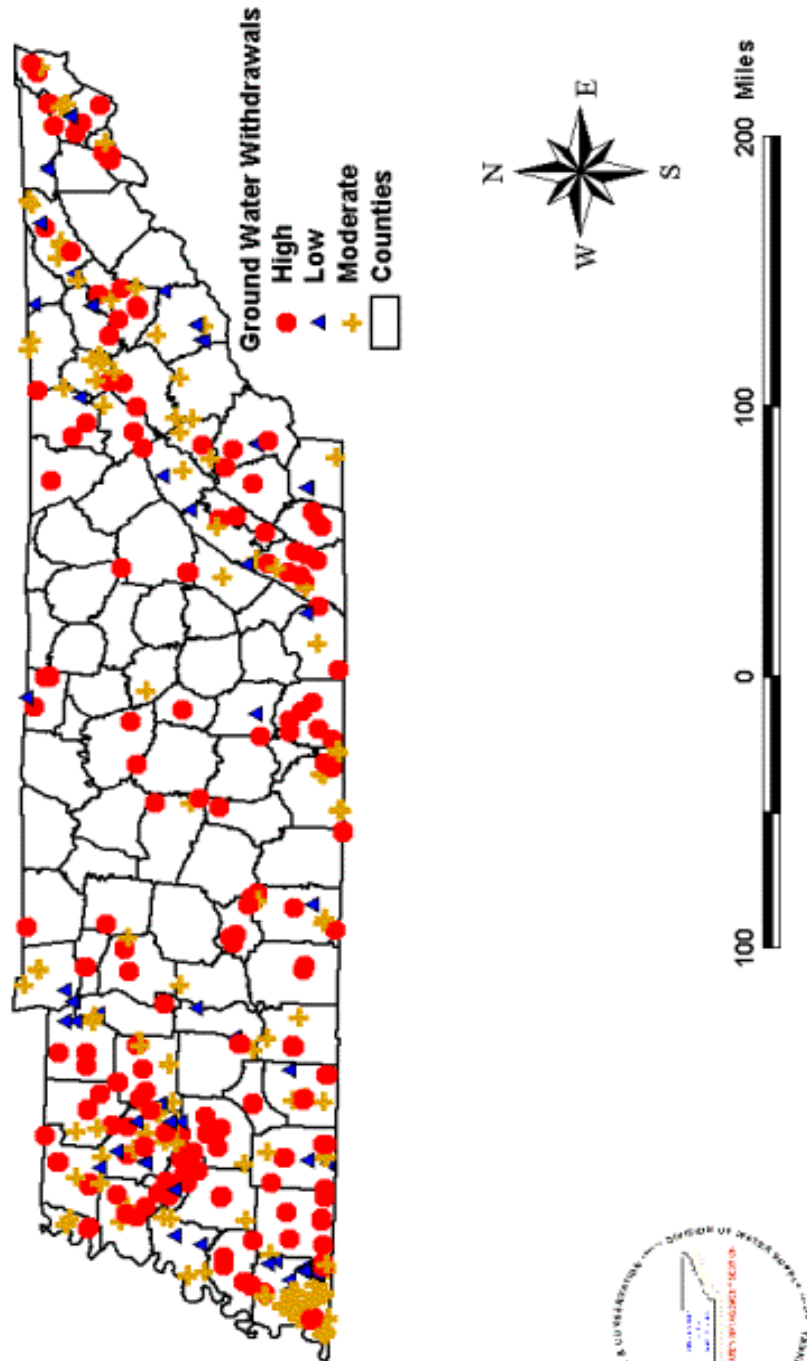
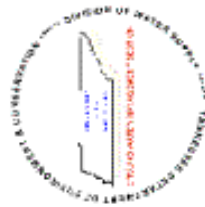


Figure 11



Susceptibility Analyses for Public Water Systems Using Surface Water

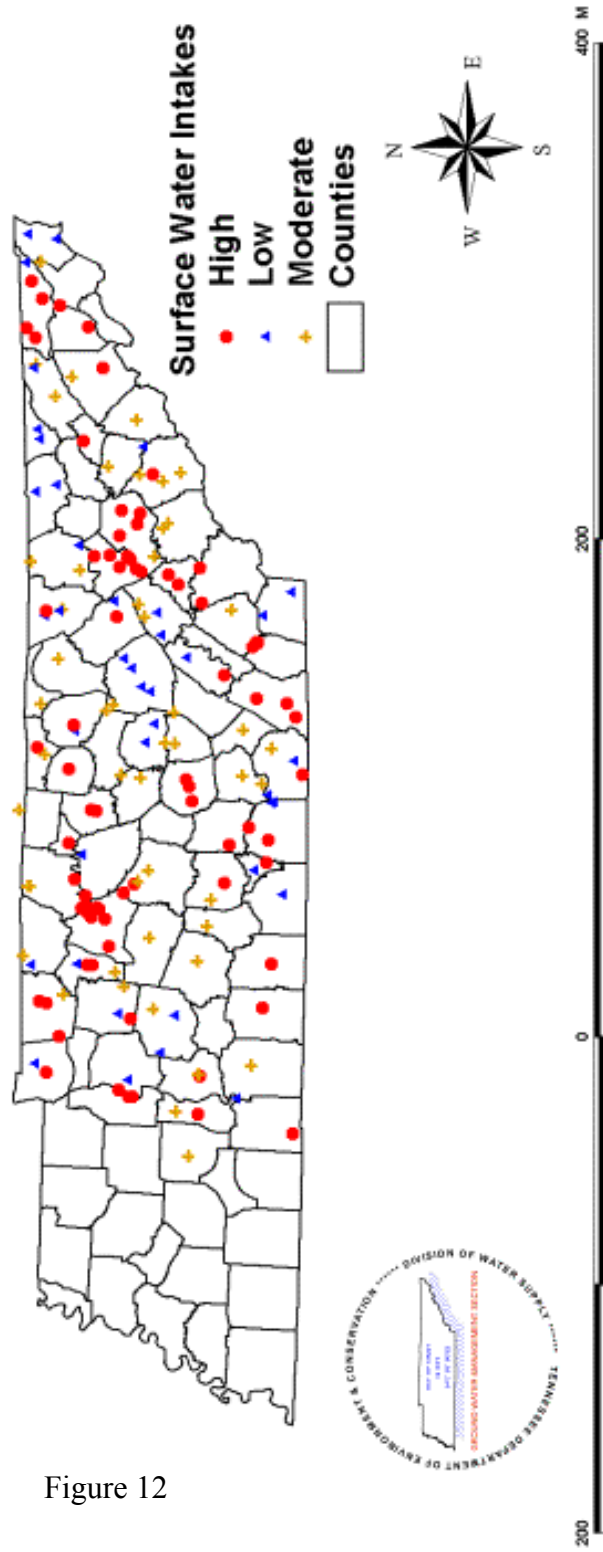


Figure 12

Discussion of Susceptibility Scoring Factors

The initial thrust of the assessments/susceptibility scorings was to determine which water supply sources would be ranked as either high, moderate or low for prioritization purposes. The prevailing concept was that the next stage would be to see how many sources could be worked on/managed to reduce their risk category from High to Moderate or Moderate to Low. Unfortunately, the scoring factors have really not been based on what can be fixed. In addition, a number of states have scored individual potential contaminant sources, not intakes or ground water withdrawal points as Tennessee has done. Reducing the susceptibility of tens of thousands of individual potential contamination sites would have been a monumental task as well.

There are a number of scoring factors that cannot be “fixed,” such as:

- 1) The geology cannot be changed
- 2) 303d listed streams cannot be fixed overnight
- 3) Transportation issues cannot be easily addressed – you cannot stop barge traffic or move major highways, etc.
- 4) Water supply intakes or entire industrial parks cannot be readily moved.

It is also difficult to quantify a risk – are four factories upstream twice as bad as two factories upstream? One small, poorly-run facility or backyard mechanic can be more of a risk than several large, well-run facilities. Such was the case for Walden Ridge Utility District in Hamilton County, Tennessee. By appearances, their wells should have been at low risk since they are in a residential area on a considerable ridge with no factories around. That did not stop their wells from becoming contaminated with trichloroethylene from a backyard mechanic’s waste solvents dumped out next door.

Other scoring issues have arisen:

- 1) How do we score golf courses or cemeteries? They have been scored in Tennessee as Urban Nonpoint Source.
- 2) What of treatment issues versus source quality violations or poor sampling technique for bacteriological sampling?
- 3) Hazardous waste facilities – what counts as a hazardous waste facility? Major facilities may be less a risk than a conditionally exempt small quantity generator, etc.
- 4) If a facility was an SIC code concern, handled Hazardous Waste and had an NPDES permit, it could score 21% by itself.

- 5) It was not taken into account why the 303d listed streams were listed. The reason for listing may not be relevant to water supply quality.
- 6) Lack of industrial best management practices was almost never scored. This would have required extensive field investigation and those resources were not available.
- 7) The Underground Injection Control program has merely scratched the surface on Class V wells. There are potentially thousands of yet-to-be discovered Class V wells (floor drains, industrial/commercial septic tanks and large capacity septic tanks in addition to classic wells).
- 8) Consistent scoring protocol is critical.
- 9) Contaminant detections are scored as impacted system even though the contamination may have only been detected one time in ten years.
- 10) How will susceptibility scores be modified/updated? This is the biggest question of all. There is no provision for updating or adding new water sources to the Source Water Assessment Program. Without this, there can be no measurement of progress. Tennessee will be attempting to add new intakes, wells and springs as a part of the required source approval required before engineering plans for a facility can be approved. Updating existing areas will be more difficult. Tennessee intends to modify its wellhead protection/source water protection regulations to address this issue.

Significant Developments

There have been significant developments at the State level since EPA's approval of Tennessee's Source Water Assessment Program. Most significant for Source Water Protection are the changes made in the Tennessee Safe Drinking Water Act in 2002 at the request of the Division of Water Supply. Prior to the amendment, TCA 68-221-711 (5) prohibited:

“The discharge by any person of sewage at such a proximity to the intake serving a public water system in such a manner or quantity that it will or will likely endanger the health or safety of customers of the system or cause damage to the system.”

After some difficulties in addressing a specific problem where it was difficult to ascertain which agency should/could respond, language was successfully added (**bolded in italics**) that prohibits:

“The discharge by any person of sewage *or any other waste or contaminant* at such a proximity to the intake, *well or spring* serving a public water system in such a manner or quantity that it will or will likely endanger the health or safety of customers of the system or cause damage to the system.”

Tennessee considers this a significant achievement toward Source Water Protection that is not available at the federal level. In addition, another amendment was proposed and successfully added to the Tennessee Safe Drinking Water Act that is more geared toward water quantity issues but that can easily become a water quality issue as well. Prior to amendment, TCA 68-221-711(8) prohibited:

“The heavy pumping or other heavy withdrawal of water from a public water system in a manner that would interfere with existing customers’ normal and reasonable needs or threaten existing customers’ health and safety.”

After concerns over addressing a major commercial water withdrawal in vicinity to a water supply spring, at the request of the Division of Water Supply an additional prohibition was added (bolded in italics):

“The heavy pumping or other heavy withdrawal of water from a public water system *or its water supply source* in a manner that would interfere with existing customers’ normal and reasonable needs or threaten existing customers’ health and safety.”

Tennessee’s new Tennessee Water Resources Information Act was also passed in the same Tennessee Legislative Session of 2002. The Act requires the registration of water withdrawals of more than 20,000 gallons per day from ground water or surface water. While there is no provision for permitting or denial of permits, this is a step toward identifying major water withdrawals in Tennessee and gives the Division of Water Supply (the agency responsible for administering the Act) additional information in addressing any potential major withdrawals near existing public water supplies.

The Division of Water Supply also requires that Source Water Protection activities must be addressed as a part of Capacity Development requirements for new community water systems. Capacity Development Plans ensure that a new water system has the technical, managerial, operational resources in place to become a viable water system.

Source Water Protection Goals and Progress

EPA’s National Source Water Contamination Strategy has set the following goals:

- 1) Ensure strong and useful source water assessments for all public water supplies.
- 2) Target relevant state and federal programs to address source water contamination prevention priorities.

- 3) Increase awareness, education and involvement by private industry, government and the public.
- 4) Foster local control and capacity.
- 5) Document and report on risks identified and progress made on reducing those risks.

Tennessee is addressing the National Source Water Contamination Strategy as follows:

- 1) Ensure strong and useful source water assessments for all public water supplies.
 - The assessment reports and susceptibility analyses are complete.
 - Assessments for the community and noncommunity surface water intakes were contracted through the Tennessee Association of Utility Districts.
 - Existing wellhead protection plans/reports were used to develop assessments for ground water systems.
 - The community ground water systems assessments (as well as the susceptibility portion for the surface water systems) were contracted through the Ground Water Institute at the University of Memphis.
 - The Ground Water Institute prepared the Source Water Assessment summaries as well and maintains the State's website.
 - Summaries have been mailed to the water systems and are available on the State website: www.state.tn.us/environment/dws.

Noncommunity ground water systems were done in-house by the Ground Water Management Section in the Division of Water Supply. Noncommunity systems are having followup visits with the priority being the higher susceptibility systems.

- 2) Target relevant state and federal programs to address source water contamination prevention priorities.
 - Tennessee has made amendments for Tennessee Safe Drinking Water Act.
 - The Source Water Protection Program is actively working with the Watershed Management Program in Tennessee.
 - Tennessee has passed the Tennessee Water Resources Information Act.
 - The Underground Injection Control regulations have been amended to allow for denial of Class V permits within wellhead protection areas.
 - Tennessee has promulgated Ground Water Classification regulations that can potentially offer a higher level of protection to water supply sources ("Special Source Waters").

- 3) Increase awareness, education and involvement by private industry, government and the public.
 - Developed Source Water Protection website: www.state.tn.us/environment/dws
 - Website referenced in the Consumer Confidence Reports
 - Held 9 Drinking Water Protection Workshops across Tennessee in October/November 2002. Workshops were advertised in major newspapers across the state, business/industry newsletters, etc. There are plans for additional workshops.
 - Source Water Protection has been integrated into Watershed Management Plans
 - TN Conservationist Article on Source Water Protection was published in March 2003
 - Presentation was made at the Tennessee Hydrologic Symposium (TN Chapter American Water Resources Association Conference).
 - Other speaking engagements have been made to a variety of organizations as the opportunity has presented itself.

- 4) Foster local control and capacity.
 - Water Supply staff is providing local Source Water Protection planning assistance working with Tennessee Association of Utility Districts (TAUD) Source Water Protection Technician. {TAUD is Tennessee's National Rural Water Association representative.}

- 5) Document and report on risks identified and progress made on reducing those risks.
 - Plans have been made to provide followup to the assessments as resources allow.
 - Work will continue with TAUD's Source Water Protection technician

Source Water Protection is a dynamic process. The states and EPA will never truly be "finished." Tennessee's Source Water Protection Program has adopted a motto: "Everybody Lives Downstream of Somebody." Source Water Protection is a complex matter of integrating the protection of the countries drinking water resources into the myriad of other environmental protection activities at the state and federal levels. This will require the long-range commitment of resources that have not yet materialized.

As we encroach more and more on the environment and our natural resources, we must be even more diligent in protecting them. Our health, safety, economy and quality of life depend on a clean, reliable source of drinking water.

**Appendix A
Public Water Systems and Their Water Sources
(Sorted by County)**

COUNTY	WATER SYSTEM ID.	COMMUNITY WATER SYSTEM	POPULATION	PARENT SYSTEM SOURCE #	WATER SOURCE
ANDERSON	0000768	ANDERSON COUNTY UTILITY BOARD	8694	02	CLINTON U.D.
ANDERSON	0000768	ANDERSON COUNTY UTILITY BOARD	8694	03	NORRIS WATER COMM
ANDERSON	0000768	ANDERSON COUNTY UTILITY BOARD	8694	04	OLIVER SPRINGS WB
ANDERSON	0000768	ANDERSON COUNTY UTILITY BOARD	8694	01	CLINCH RIVER
ANDERSON	0000120	CLINTON UTILITY BOARD	14625	03	HALLSDALE POWELL
ANDERSON	0000120	CLINTON UTILITY BOARD	14625	02	ANDERSON CO U B
ANDERSON	0000120	CLINTON UTILITY BOARD	14625	01	CLINCH RIVER
ANDERSON	0000120	CLINTON UTILITY BOARD	14625	04	NORTH ANDERSON
ANDERSON	0000383	LAKE CITY WATER DEPARTMENT	2142	01	NORTH ANDERSON
ANDERSON	0000513	NORRIS WATER COMMISSION	1801	02	ANDERSON CO U B
ANDERSON	0000513	NORRIS WATER COMMISSION	1801	01	SPRING
ANDERSON	0000514	NORTH ANDERSON COUNTY UTILITY DISTRICT	10653	01	CLINCH RIVER
ANDERSON	0000514	NORTH ANDERSON COUNTY UTILITY DISTRICT	10653	02	SPRING
ANDERSON	0000514	NORTH ANDERSON COUNTY UTILITY DISTRICT	10653	03	ANDERSON CO U B
ANDERSON	0000522	OAK RIDGE DEPT OF PUBLIC WORKS	27966	02	ANDERSON CO U B
ANDERSON	0000522	OAK RIDGE DEPT OF PUBLIC WORKS	27966	01	CLINCH RIVER
BEDFORD	0000517	BEDFORD COUNTY UTILITY DISTRICT	12950	01	DUCK RIVER
BEDFORD	0000517	BEDFORD COUNTY UTILITY DISTRICT	12950	02	SHELBYVILLE
BEDFORD	0000517	BEDFORD COUNTY UTILITY DISTRICT	12950	03	TULLAHOMA
BEDFORD	0000517	BEDFORD COUNTY UTILITY DISTRICT	12950	04	WARTRACE
BEDFORD	0000517	BEDFORD COUNTY UTILITY DISTRICT	12950	05	BELL BUCKLE

Appendix A

COUNTY	WATER SYSTEM ID.	COMMUNITY WATER SYSTEM	POPULATION	PARENT SYSTEM SOURCE #	WATER SOURCE
BEDFORD	0000044	BELL BUCKLE WATER SYSTEM	1575	01	WARTRACE
BEDFORD	0000044	BELL BUCKLE WATER SYSTEM	1575	02	BEDFORD CO UD
BEDFORD	0000629	FLAT CREEK CO OP	1989	01	SHELBYVILLE
BEDFORD	0000629	FLAT CREEK CO OP	1989	02	TULLAHOMA
BEDFORD	0008115	JARRELL MOBILE HOME PARK	48	01	WELLS
BEDFORD	0000628	SHELBYVILLE WATER SYSTEM	19425	01	DUCK RIVER
BEDFORD	0000730	WARTRACE WATER SYSTEM	2366	01	SPRING
BEDFORD	0000730	WARTRACE WATER SYSTEM	2366	02	SHELBYVILLE
BEDFORD	0000730	WARTRACE WATER SYSTEM	2366	03	BEDFORD CO UD
BENTON	0000051	BIG SANDY WATER DEPT	941	01	WELLS
BENTON	0000090	CAMDEN WATER DEPARTMENT	9687	01	TENNESSEE RIVER
BENTON	0000950	DRY BRANCH WATER SYSTEM	45	01	WELLS
BENTON	0000055	HARBOR UTILITY DISTRICT	521	01	WELLS
BLED SOE	0000551	PIKEVILLE WATER SYSTEM	3380	01	WELLS
BLED SOE	0000553	TAFT YOUTH CENTER	1000	01	BEE CREEK
BLOUNT	0000007	ALCOA WATER SYSTEM	23223	01	LITTLE RIVER
BLOUNT	0000974	ALLEN DALE DRIVE MOBILE HOME PARK	88	01	WELL
BLOUNT	0000805	BAYS MOUNTAIN MOBILE HOME PARK	90	01	SPRING
BLOUNT	0000954	COLONIAL HARBOR WATER SYSTEM	35	01	WELL
BLOUNT	0008003	COUNTRY ACRES FARM	110	02	WELL
BLOUNT	0008003	COUNTRY ACRES FARM	110	01	SOUTH BLOUNT UD
BLOUNT	0000249	FRIENDSVILLE WATER WORKS	3650	01	SOUTH BLOUNT UD
BLOUNT	0000249	FRIENDSVILLE WATER WORKS	3650	02	TELLICO AREA SS
BLOUNT	0000438	MARYVILLE DEPARTMENT OF WATER QUALITY CONTROL	31867	01	LITTLE RIVER
BLOUNT	0000438	MARYVILLE DEPT OF WATER QUALITY CONTROL	31867	02	ALCOA WATER

Appendix A

COUNTY	WATER SYSTEM ID.	COMMUNITY WATER SYSTEM	POPULATION	PARENT SYSTEM SOURCE #	WATER SOURCE
BLOUNT	0000643	SOUTH BLOUNT UTILITY DISTRICT	29470	01	ALCOA WATER
BLOUNT	0000643	SOUTH BLOUNT UTILITY DISTRICT	29470	03	TELLICO AREA SS
BLOUNT	0000643	SOUTH BLOUNT UTILITY DISTRICT	29470	02	MARYVILLE
BLOUNT	0000714	TUCKALEECHEE UTILITY DISTRICT	7904	01	ALCOA WATER
BLOUNT	0000714	TUCKALEECHEE UTILITY DISTRICT	7904	02	MARYVILLE
BLOUNT	0000714	TUCKALEECHEE UTILITY DISTRICT	7904	03	KNOX-CHAPMAN
BRADLEY	0000117	CLEVELAND UTILITIES	65843	04	EASTSIDE UD
BRADLEY	0000117	CLEVELAND UTILITIES	65843	02	SPRING
BRADLEY	0000117	CLEVELAND UTILITIES	65843	01	HIWASSEE RIVER
BRADLEY	0000117	CLEVELAND UTILITIES	65843	03	HIWASSEE UC
BRADLEY	0000117	CLEVELAND UTILITIES	65843	05	EASTSIDE UD
BRADLEY	0000117	CLEVELAND UTILITIES	65843	06	SAVANNAH VALLEY UD
BRADLEY	0000831	HIWASSEE UTILITY COMMISSION	97	01	HIWASSEE RIVER
BRADLEY	0000525	OCOEE UTILITY DISTRICT	11950	02	CLEVELAND UD
BRADLEY	0000525	OCOEE UTILITY DISTRICT	11950	01	WELL & SPRING
BRADLEY	0000525	OCOEE UTILITY DISTRICT	11950	03	BENTON WS
CAMPBELL	0000322	CARYVILLE-JACKSBORO UTILITY DISTRICT	8803	01	COVE LAKE
CAMPBELL	0000322	CARYVILLE-JACKSBORO UTILITY DISTRICT	8803	02	SPRING
CAMPBELL	0000322	CARYVILLE-JACKSBORO UTILITY DISTRICT	8803	03	NORTH ANDERSON
CAMPBELL	0000322	CARYVILLE-JACKSBORO UTILITY DISTRICT	8803	04	LAFOLLETTE
CAMPBELL	0000322	CARYVILLE-JACKSBORO UTILITY DISTRICT	8803	05	WELL
CAMPBELL	0000912	DEERFIELD RESORT WATER SYSTEM	791	01	WELLS
CAMPBELL	0000330	JELICO WATER DEPARTMENT	4353	01	MINE IMPOUDMENT
CAMPBELL	0000330	JELICO WATER DEPARTMENT	4353	02	WELL

Appendix A

COUNTY	WATER SYSTEM ID.	COMMUNITY WATER SYSTEM	POPULATION	PARENT SYSTEM SOURCE #	WATER SOURCE
CAMPBELL	0000374	LA FOLLETTE WATER DEPARTMENT	20760	02	CARRYVILLE-JACKSBORO
CAMPBELL	0000374	LA FOLLETTE WATER DEPARTMENT	20760	01	NORRIS LAKE
CAMPBELL	0008210	WALKER'S CROSSING APARTMENTS	487	01	KNOXVILLE UTILITIES BOARD
CANNON	0000756	WOODBURY WATER SYSTEM	7540	01	SPRING
CANNON	0000756	WOODBURY WATER SYSTEM	7540	02	W WARREN VIOLA
CANNON	0000756	WOODBURY WATER SYSTEM	7540	04	DEKALB U D #1
CANNON	0000756	WOODBURY WATER SYSTEM	7540	03	CONSOLIDATED UD
CARROLL	0000035	ATWOOD WATER SYSTEM	1296	01	WELLS
CARROLL	0000081	BRUCETON WATER SYSTEM	1715	01	WELLS
CARROLL	0000098	CEDAR GROVE UTILITY DISTRICT	1288	01	WELLS
CARROLL	0000115	CLARKSBURG UTILITY DISTRICT	1286	01	WELLS
CARROLL	0000310	HOLLOW ROCK WATER DEPARTMENT	919	01	WELLS
CARROLL	0000316	HUNTINGDON WATER DEPARTMENT	5820	01	WELLS
CARROLL	0000421	MCKENZIE WATER DEPARTMENT	6000	01	WELLS
CARROLL	0000422	MCLEMORESVILLE WATER DEPARTMENT	343	01	WELLS
CARROLL	0000710	TREZEVANT WATER SYSTEM	1115	01	WELLS
CARTER	0000221	ELIZABETHTON WATER DEPARTMENT	26464	01	SPRINGS
CARTER	0000221	ELIZABETHTON WATER DEPARTMENT	26464	02	JOHNSON CITY WD
CARTER	0000094	FIRST UTILITY DISTRICT OF CARTER COUNTY	7050	01	WELLS & SPRINGS
CARTER	0000282	HAMPTON UTILITY DISTRICT	3409	01	SPRING
CARTER	0000223	NORTH ELIZABETHTON WATER CO-OP	1130	01	ELIZABETHTON
CARTER	0000802	PETERS' HOLLOW WATER SYSTEM	142	01	WELLS
CARTER	0000584	ROAN MOUNTAIN UTILITY DISTRICT	852	01	WELLS

Appendix A

COUNTY	WATER SYSTEM ID.	COMMUNITY WATER SYSTEM	POPULATION	PARENT SYSTEM SOURCE #	WATER SOURCE
CARTER	0000633	SIAM UTILITY DISTRICT	2350	02	WELLS
CARTER	0000633	SIAM UTILITY DISTRICT	2350	01	ELIZABETHTON
CARTER	0000646	SOUTH ELIZABETHTON UTILITY DISTRICT	5249	01	HAMPTON U D
CHEATHAM	0000023	ASHLAND CITY WATER DEPARTMENT	5020	01	BIG MARROWBONE CREEK
CHEATHAM	0000218	EAST MONTGOMERY UTILITY DISTRICT	12036	02	SPRINGFIELD
CHEATHAM	0000218	EAST MONTGOMERY UTILITY DISTRICT	12036	03	CUNNINGHAM.-E. MONTGOMERY
CHEATHAM	0000218	EAST MONTGOMERY UTILITY DISTRICT	12036	01	CLARKSVILLE
CHEATHAM	0000558	PLEASANT VIEW UTILITY DISTRICT	11565	02	SPRINGFIELD
CHEATHAM	0000558	PLEASANT VIEW UTILITY DISTRICT	11565	03	CUNNINGHAM - E. MONTGOMERY
CHEATHAM	0000558	PLEASANT VIEW UTILITY DISTRICT	11565	01	SYCAMORE CREEK
CHEATHAM	0000582	RIVER ROAD UTILITY DISTRICT	2132	01	BRUSH CREEK
CHEATHAM	0000582	RIVER ROAD UTILITY DISTRICT	2132	02	HARPETH VALLEY
CHEATHAM	0000645	SECOND SOUTH CHEATHAM UTILITY DISTRICT	7329	01	HARPETH RIVER
CHESTER	0000293	HENDERSON WATER DEPARTMENT	7224	01	WELLS
CLAIBORNE	0000022	ARTHUR-SHAWANEE UTILITY DISTRICT	6970	02	DAVIS CREEK
CLAIBORNE	0000022	ARTHUR-SHAWANEE UTILITY DISTRICT	6970	01	POWELL RIVER
CLAIBORNE	0000113	CLAIBORNE COUNTY UTILITY DISTRICT	12611	01	NORRIS LAKE
CLAIBORNE	0000826	CLEAR FORK UTILITY DISTRICT	1566	01	WELLS
CLAIBORNE	0000161	CUMBERLAND GAP WATER SERVICES	331	01	LINCOLN MEMORIAL UNIVERSITY
CLAIBORNE	0000920	INDIAN CREEK TRAILER PARK	95	01	WELL
CLAIBORNE	0000290	LINCOLN MEMORIAL UNIVERSITY	1870	01	SPRING
CLAY	0000099	CELINA WATER SYSTEM	4533	01	OBEY RIVER

Appendix A

COUNTY	WATER SYSTEM ID.	COMMUNITY WATER SYSTEM	POPULATION	PARENT SYSTEM SOURCE #	WATER SOURCE
CLAY	0000573	NORTHWEST CLAY COUNTY UTILITY	3075	01	CUMBERLAND RIVER
CLAY	0000573	NORTHWEST CLAY COUNTY UTILITY	3075	02	RED BOILING SPRINGS U.D.
COCKE	0000500	NEWPORT UTILITIES BOARD	21827	01	FRENCH BROAD RIVER
COFFEE	0000821	DUCK RIVER UTILITY COMMISSION	25	01	NORMANDY LAKE
COFFEE	0000430	HILLSVILLE UTILITY DISTRICT	6939	01	MANCHESTER
COFFEE	0000429	MANCHESTER WATER DEPARTMENT	12534	01	DUCK RIVER UC
COFFEE	0000880	STACEY ANN'S MOBILE HOME PARK	123	01	WELLS
COFFEE	0000715	TULLAHOMA BOARD OF UTILITIES	22713	02	CENTER GROVE WINCHESTER
COFFEE	0000715	TULLAHOMA BOARD OF UTILITIES	22713	01	DUCK RIVER U C
CROCKETT	0000005	ALAMO WATER DEPT	3069	01	WELLS
CROCKETT	0000045	BELLS PUBLIC UTILITY DISTRICT	2501	01	WELLS
CROCKETT	0000006	COUNTY WIDE UTILITY DISTRICT	8207	01	WELLS
CROCKETT	0000148	CROCKETT MILLS UTILITY DISTRICT	792	01	WELLS
CROCKETT	0000928	FRIENDSHIP DISTRIBUTION SYSTEM	837	01	FRIENDSHIP W.C.
CROCKETT	0000248	FRIENDSHIP WATER COMPANY	837	01	WELLS
CROCKETT	0000441	MAURY CITY WATER DEPARTMENT	1118	01	WELLS
CUMBERLAND	0000158	CATOOSA UTILITY DISTRICT	7705	01	CROSSVILLE
CUMBERLAND	0000147	CRAB ORCHARD UTILITY DISTRICT	13446	02	CROSSVILLE
CUMBERLAND	0000147	CRAB ORCHARD UTILITY DISTRICT	13446	01	OTTER CREEK IMPOUNDMENT
CUMBERLAND	0000150	CROSSVILLE WATER DEPARTMENT	15938	02	MEADOW PARK LAKE
CUMBERLAND	0000150	CROSSVILLE WATER DEPARTMENT	15938	01	HOLIDAY HILLS LAKE
CUMBERLAND	0000848	CUMBERLAND MTN RETREAT	92	01	WELLS
CUMBERLAND	0008157	RENEGADE MOUNTAIN WATER SYSTEM	265	01	CRAB ORCHARD
CUMBERLAND	0000159	SOUTH CUMBERLAND UTILITY DISTRICT	7705	01	CROSSVILLE

Appendix A

COUNTY	WATER SYSTEM ID.	COMMUNITY WATER SYSTEM	POPULATION	PARENT SYSTEM SOURCE #	WATER SOURCE
CUMBERLAND	0000557	WEST CUMBERLAND UTILITY DISTRICT	3674	02	CROSSVILLE
CUMBERLAND	0000557	WEST CUMBERLAND UTILITY DISTRICT.	3674	01	BON DE CROFT UD
DAVIDSON	0008104	333 APARTMENTS	170	01	MADISON
DAVIDSON	0008063	ARBORS AT BRENTWOOD APARTMENTS	816	01	NASHVILLE
DAVIDSON	0008073	ARBORS OF HICKORY HOLLOW APARTMENTS	793	01	NASHVILLE
DAVIDSON	0008097	ARBOURS OF HERMITAGE APARTMENTS	805	01	CUMBERLAND U.D.
DAVIDSON	0008085	ARCHSTONE AT BELLEVUE APARTMENTS	517	01	NASHVILLE
DAVIDSON	0008039	ARCHSTONE AT BRENTWOOD APARTMENTS	897	01	NASHVILLE
DAVIDSON	0008038	ARCHSTONE AT BRILEY PARKWAY	850	01	NASHVILLE
DAVIDSON	0008090	ARCHSTONE HICKORY HOLLOW APARTMENTS	1067	01	NASHVILLE
DAVIDSON	0008037	ARCHSTONE SHADOWBLUFF APARTMENTS	519	01	NASHVILLE
DAVIDSON	0008035	BELMONT VILLAGE APARTMENTS	101	01	NASHVILLE
DAVIDSON	0008191	BERKELEY RIDGE APARTMENTS	576	01	NASHVILLE
DAVIDSON	0008016	BRECKENRIDGE APARTMENTS	448	01	MADISON SUBURBAN
DAVIDSON	0008129	BRENTRIDGE APARTMENTS	772	01	NASHVILLE
DAVIDSON	0008101	BRENTWOOD DOWNS APARTMENTS	675	01	NASHVILLE
DAVIDSON	0008094	BRENTWOOD GABLES APARTMENTS	600	01	NASHVILLE
DAVIDSON	0008165	BRENTWOOD OAKS APARTMENTS	618	01	NASHVILLE
DAVIDSON	0008078	BRIXWORTH APARTMENTS	510	01	NASHVILLE
DAVIDSON	0008017	BROOKRIDGE APARTMENTS	415	01	NASHVILLE
DAVIDSON	0008108	BUCKHEAD PLACE APARTMENTS	240	01	HARPETH VALLEY

Appendix A

COUNTY	WATER SYSTEM ID.	COMMUNITY WATER SYSTEM	POPULATION	PARENT SYSTEM SOURCE #	WATER SOURCE
DAVIDSON	0008058	CAMBRIDGE OF HICKORY HOLLOW APARTMENTS	850	01	NASHVILLE
DAVIDSON	0008071	CANTERCHASE APARTMENTS	555	01	NASHVILLE
DAVIDSON	0008066	CHERRY CREEK APARTMENTS	1442	01	CUMBERLAND U.D.
DAVIDSON	0008178	CHIMNEY TOP APARTMENTS	821	01	NASHVILLE
DAVIDSON	0008018	CLUB AT HICKORY HOLLOW APARTMENTS	958	01	NASHVILLE
DAVIDSON	0008183	COBBLESTONE CORNERS APARTMENTS	227	01	NASHVILLE
DAVIDSON	0008098	COLONNADE APARTMENTS, THE	680	01	CUMBERLAND U.D.
DAVIDSON	0008105	COPPERFIELD TERRACE APARTMENTS	156	01	NASHVILLE
DAVIDSON	0008032	COUNTRY MEADOWS MOBILE HOME PARK	699	01	NASHVILLE
DAVIDSON	0008168	COVE AT PRIEST LAKE, THE	864	01	NASHVILLE
DAVIDSON	0008176	CROSSINGS OF BELLEVUE APARTMENTS	503	01	HARPETH VALLEY
DAVIDSON	0000297	CUMBERLAND UTILITY DISTRICT	28750	01	CUMBERLAND RIVER
DAVIDSON	0000297	CUMBERLAND UTILITY DISTRICT	28750	02	WEST WILSON U.D.
DAVIDSON	0000982	EVELYN DRIVE DUPLEXES	37	01	NASHVILLE
DAVIDSON	0008011	FAIRSTEAD PARK CONDOMINIUMS	109	01	NASHVILLE
DAVIDSON	0008062	GABLES AT HICKORY HOLLOW APARTMENTS	1293	01	NASHVILLE
DAVIDSON	0000990	GARDENS OF GREEN HILLS	283	01	NASHVILLE
DAVIDSON	0008031	GARDENS OF HILLSBORO VILLAGE	474	01	NASHVILLE
DAVIDSON	0008134	GATEWAY MOBILE HOME PARK	83	01	MADISON
DAVIDSON	0000988	GLASTONBURY WOODS APARTMENTS	340	01	NASHVILLE
DAVIDSON	0008156	GRANDE VIEW APARTMENTS	1022	01	HARPETH VALLEY
DAVIDSON	0008150	GROVE AT DEVON HILLS, THE	824	01	HARPETH VALLEY

Appendix A

COUNTY	WATER SYSTEM ID.	COMMUNITY WATER SYSTEM	POPULATION	PARENT SYSTEM SOURCE #	WATER SOURCE
DAVIDSON	0008151	GROVE AT WHITWORTH, THE	710	01	NASHVILLE
DAVIDSON	0008089	GROVE RICHLAND APARTMENTS	689	01	NASHVILLE
DAVIDSON	0008019	HARBOUR TOWN APARTMENTS	437	01	NASHVILLE
DAVIDSON	0000286	HARPETH VALLEY UTILITY DISTRICT	29070	01	CUMBERLAND RIVER
DAVIDSON	0000989	HARTFORD HOUSE APARTMENTS	260	01	NASHVILLE
DAVIDSON	0000987	HERMITAGE VIEW APARTMENTS	92	01	CUMBERLAND U.D.
DAVIDSON	0000981	HICKORY HILLS APARTMENTS	104	01	CUMBERLAND U.D.
DAVIDSON	0008177	HILLMEADE APARTMENTS	708	01	HARPETH VALLEY
DAVIDSON	0008082	JAMESTOWN APARTMENTS	160	01	NASHVILLE
DAVIDSON	0000993	JEFFERSONIAN APARTMENTS	64	01	NASHVILLE
DAVIDSON	0008091	KEYSTONE FARMS APARTMENTS	212	01	NASHVILLE
DAVIDSON	0008180	KNOLLWOOD APARTMENTS	658	01	HARPETH VALLEY
DAVIDSON	0000528	LAKEWOOD WATER DEPARTMENT	2242	01	OLD HICKORY UD
DAVIDSON	0000528	LAKEWOOD WATER DEPARTMENT	2242	02	CUMBERLAND U.D.
DAVIDSON	0008022	LEGACY HILL APARTMENTS	486	01	NASHVILLE
DAVIDSON	0008065	LENOXGATE APARTMENTS	607	01	MADISON
DAVIDSON	0008184	LEXINGTON AT BELLEVUE APARMENT	575	01	HARPETH VALLEY
DAVIDSON	0000424	MADISON SUBURBAN UTILITY DISTRICT	42484	01	CUMBERLAND RIVER
DAVIDSON	0008200	MERCURY VIEW LOFTS	74	01	NASHVILLE
DAVIDSON	0008034	MILLWOOD MANOR APARTMENTS	474	01	NASHVILLE
DAVIDSON	0000494	NASHVILLE WATER DEPARMENT #1	412067	01	CUMBERLAND RIVER
DAVIDSON	0000529	NASHVILLE WATER DEPARTMENT #2	1290	01	OLD HICKORY UD
DAVIDSON	0008181	NOB HILL APARTMENTS	850	01	NASHVILLE
DAVIDSON	0000986	OAKCREST CONDOMINIUMS	161	01	NASHVILLE

Appendix A

COUNTY	WATER SYSTEM ID.	COMMUNITY WATER SYSTEM	POPULATION	PARENT SYSTEM SOURCE #	WATER SOURCE
DAVIDSON	0000996	OLD HICKORY ESTATES MOBILE HOME PARK	713	01	MADISON
DAVIDSON	0000527	OLD HICKORY UTILITY DISTRICT	3948	01	CUMBERLAND RIVER
DAVIDSON	0000985	PAGODA CONDOMINIUMS	260	01	NASHVILLE
DAVIDSON	0008103	PARK AT HERMITAGE APTS, THE	1038	01	CUMBERLAND UD
DAVIDSON	0008109	PINNACLE HEIGHTS APARTMENTS	562	01	NASHVILLE
DAVIDSON	0008128	POLO PARK AT JACKSON DOWNS APARTMENTS	911	01	NASHVILLE
DAVIDSON	0008138	POST BENNIE DILLON APARTMENTS	203	01	NASHVILLE
DAVIDSON	0008193	POST RIDGE APARTMENTS	345	01	HARPETH VALLEY
DAVIDSON	0008070	PREAKNESS APARTMENTS	613	01	NASHVILLE
DAVIDSON	0008059	PRESERVE AT BRENTWOOD APARTMENTS	828	01	NASHVILLE
DAVIDSON	0008086	RAINTREE VILLAGE CONDOMINIUMS	127	01	CUMBERLAND UD
DAVIDSON	0008174	RIDGELAKE APARTMENTS	1352	01	HARPETH VALLEY
DAVIDSON	0008099	RIVER RETREAT I APARTMENTS	340	01	MADISON
DAVIDSON	0008100	RIVER RETREAT II APARTMENTS	340	01	MADISON
DAVIDSON	0008002	SHADY HILLS MOBILE HOME PARK	460	01	NASHVILLE
DAVIDSON	0008127	SHEFFIELD HEIGHTS APARTMENTS	477	01	NASHVILLE
DAVIDSON	0008067	SPINNAKER COVE APARTMENTS	656	01	NASHVILLE
DAVIDSON	0008143	STEWARTS FERRY APARTMENTS	821	01	NASHVILLE
DAVIDSON	0008159	TERRACE HILLS APARTMENTS	249	01	NASHVILLE
DAVIDSON	0008093	TRAILMONT MOBILE HOME PARK	301	01	NASHVILLE
DAVIDSON	0008179	TRAILS APARTMENTS, THE	800	01	NASHVILLE
DAVIDSON	0008142	TURNBERRY SQUARE CONDOMINIUMS	68	01	NASHVILLE
DAVIDSON	0008190	TWIN OAKS APARTMENTS	765	02	NASHVILLE

Appendix A

COUNTY	WATER SYSTEM ID.	COMMUNITY WATER SYSTEM	POPULATION	PARENT SYSTEM SOURCE #	WATER SOURCE
DAVIDSON	0008107	VILLAGE PLACE APARTMENTS	152	01	NASHVILLE
DAVIDSON	0008009	WATERFORD CROSSINGS APARTMENTS	690	01	NASHVILLE
DAVIDSON	0008110	WATERFORD LANDING APARTMENTS	434	01	CUMBERLAND U.D.
DAVIDSON	0008125	WATERFORD PLACE @ BELLEVUE APARTMENTS	180	01	HARPETH VALLEY
DAVIDSON	0000991	WELCH BEND APARTMENTS	1128	01	NASHVILLE
DAVIDSON	0000992	WEST END APARTMENTS	113	01	NASHVILLE
DAVIDSON	0008057	WYNDCHASE AT BELLEVUE APARTMENTS	826	01	HARPETH VALLEY
DECATUR	0000186	DECATURVILLE WATER SYSTEM	2112	01	WELLS
DECATUR	0000883	NORTH UTILITY DISTRICT OF DECATUR/BENTON COUNTY	2675	02	TENNESSEE RIVER
DECATUR	0000883	NORTH UTILITY DISTRICT OF DECATUR/BENTON COUNTY	2675	01	PARSONS
DECATUR	0000541	PARSONS WATER DEPARTMENT	3941	01	BEECH RIVER
DECATUR	0000543	PERRYVILLE UTILITY DISTRICT	2314	01	PARSONS
DECATUR	0000679	WOODLAWN SHORES WATERWORKS	136	01	WELLS
DEKALB	0000008	ALEXANDRIA WATER SYSTEM	1755	01	SMITH CO.U.D.#1
DEKALB	0000188	DEKALB UTILITY DISTRICT #1	9580	01	SMITHVILLE
DEKALB	0000835	DEKALB UTILITY DISTRICT #4	395	01	BAXTER W S
DEKALB	0000403	DOWELLTOWN-LIBERTY UTILITY DISTRICT	1000	01	WELLS
DEKALB	0000637	SMITHVILLE WATER SYSTEM	5080	01	CENTER HILL LAKE
DICKSON	0000691	SYLVIA-TENNESSEE CITY-POND UTILITY	3819	01	WATER AUTHORITY OF DICKSON COUNTY
DICKSON	0000724	VANLEER WATER SYSTEM	2461	01	SPRING

Appendix A

COUNTY	WATER SYSTEM ID.	COMMUNITY WATER SYSTEM	POPULATION	PARENT SYSTEM SOURCE #	WATER SOURCE
DICKSON	0000724	VANLEER WATER SYSTEM	2461	02	SYLVIA-TN CITY
DICKSON	0000191	WATER AUTHORITY OF DICKSON COUNTY	30411	01	CUMBERLAND RIVER (PROPOSED)
DICKSON	0000191	WATER AUTHORITY OF DICKSON COUNTY	30411	02	W. PINEY RIVER
DICKSON	0000191	WATER AUTHORITY OF DICKSON COUNTY	30411	03	CITY LAKE
DICKSON	0000191	WATER AUTHORITY OF DICKSON COUNTY	30411	04	TURNBULL CREEK
DYER	0000212	DYERSBURG SUBURBAN CONSOLIDATED U D	3892	02	NW DYERSBURG UD
DYER	0000212	DYERSBURG SUBURBAN CONSOLIDATED UTILITY DISTRICT	3892	01	WELLS
DYER	0000211	DYERSBURG WATER DEPARTMENT	20000	01	WELLS
DYER	0000888	MIDWAY TRAILER COURT	42	01	WELL
DYER	0000496	NEWBERN WATER DEPARTMENT	7925	01	WELLS
DYER	0000518	NORTHWEST DYERSBURG UTILITY DISTRICT	3810	01	WELLS
DYER	0000518	NORTHWEST DYERSBURG UTILITY DISTRICT	3810	02	DYERSBURG SUB C
DYER	0000711	TRIMBLE WATER SYSTEM	747	01	WELLS
FAYETTE	0000254	GALLAWAY WATER DEPARTMENT	916	01	WELLS
FAYETTE	0000382	LA GRANGE WATER DEPARTMENT	223	01	WELLS
FAYETTE	0000477	MOSCOW WATER DEPARTMENT	677	01	WELLS
FAYETTE	0000521	OAKLAND WATER DEPT	4604	01	WELLS
FAYETTE	0000842	PIPERTON WATER SYSTEM	900	01	COLLIERVILLE
FAYETTE	0000597	ROSSVILLE WATER SYSTEM	567	01	WELLS
FAYETTE	0000641	SOMERVILLE WATER SYSTEM	4588	01	WELLS
FENTRESS	0000010	ALLARDT WATER WORKS	2495	01	FENTRESS COUNTY
FENTRESS	0000875	CHANUTE-PALL MALL UTILITY DISTRICT	947	01	BYRDSTOWN

Appendix A

COUNTY	WATER SYSTEM ID.	COMMUNITY WATER SYSTEM	POPULATION	PARENT SYSTEM SOURCE #	WATER SOURCE
FENTRESS	0000244	FENTRESS COUNTY UTILITY DISTRICT	10367	01	JAMESTOWN
FENTRESS	0000324	JAMESTOWN WATER DEPARTMENT	3257	01	N.WHITE OAK CREEK
FRANKLIN	0000046	BELVIDERE RURAL UTILITY DISTRICT	1190	02	WINCHESTER
FRANKLIN	0000046	BELVIDERE RURAL UTILITY DISTRICT	1190	01	WELL
FRANKLIN	0000101	CENTER GROVE-WINCHESTER SPRINGS	5238	01	SPRING
FRANKLIN	0000101	CENTER GROVE-WINCHESTER SPRINGS	5238	04	TULLAHOMA
FRANKLIN	0000101	CENTER GROVE-WINCHESTER SPRINGS	5238	03	TULLAHOMA
FRANKLIN	0000101	CENTER GROVE-WINCHESTER SPRINGS	5238	02	WINCHESTER
FRANKLIN	0000146	COWAN BOARD OF PUBLIC UTILITIES	2134	01	SPRING
FRANKLIN	0000187	DECHERD WATER DEPARTMENT	3606	01	WELLS
FRANKLIN	0000187	DECHERD WATER DEPARTMENT	3606	02	WINCHESTER
FRANKLIN	0000232	ESTILL SPRINGS WATER DEPARTMENT	3688	01	SPRING
FRANKLIN	0000317	HUNTLAND WATER SYSTEM	1637	01	WELLS
FRANKLIN	0000623	SEWANEES UTILITY DISTRICT	4384	03	MONTEAGLE W.S.
FRANKLIN	0000623	SEWANEES UTILITY DISTRICT	4384	01	LAKE O'DONNELL
FRANKLIN	0000623	SEWANEES UTILITY DISTRICT	4384	02	LAKE JACKSON
FRANKLIN	0000754	WINCHESTER WATER SYSTEM	17316	01	TIMS FORD LAKE
FRANKLIN	0000754	WINCHESTER WATER SYSTEM	17316	02	BELVIDERE UD
FRANKLIN	0000754	WINCHESTER WATER SYSTEM	17316	03	DECHERD WS
FRANKLIN	0000754	WINCHESTER WATER SYSTEM	17316	04	CENTER GROVE WINCHESTER
GIBSON	0000067	BRADFORD WATER SYSTEM	1362	01	WELL
GIBSON	0008132	COUNTY LINE TRAILER PARK	72	01	WELLS
GIBSON	0000209	DYER WATER DEPT	2784	01	WELLS
GIBSON	0000709	GIBSON COUNTY MUNICIPAL WATER DISTRICT #1	2735	01	GRIER'S CHAPEL

Appendix A

COUNTY	WATER SYSTEM ID.	COMMUNITY WATER SYSTEM	POPULATION	PARENT SYSTEM SOURCE #	WATER SOURCE
GIBSON	0000709	GIBSON COUNTY MUNICIPAL WATER DISTRICT #1	2735	02	GIBSON CO # 2
GIBSON	0000709	GIBSON COUNTY MUNICIPAL WATER DISTRICT #1	2735	03	TRENTON
GIBSON	0000788	GIBSON COUNTY MUNICIPAL WATER DISTRICT #2	1147	02	GIBSON CO MUN
GIBSON	0000788	GIBSON COUNTY MUNICIPAL WATER DISTRICT #2	1147	01	WELL
GIBSON	0000812	GIBSON COUNTY MUNICIPAL WATER DISTRICT #3	1357	02	GIBSON CO # 4
GIBSON	0000812	GIBSON COUNTY MUNICIPAL WATER DISTRICT #3	1357	03	TRENTON
GIBSON	0000812	GIBSON COUNTY MUNICIPAL WATER DISTRICT #3	1357	01	EATON CENTRAL W
GIBSON	0000813	GIBSON COUNTY MUNICIPAL WATER DISTRICT #4	1393	02	GIBSON CO # 3
GIBSON	0000813	GIBSON COUNTY MUNICIPAL WATER DISTRICT #4	1393	01	WELL
GIBSON	0000813	GIBSON COUNTY MUNICIPAL WATER DISTRICT #4	1393	03	TRENTON
GIBSON	0000815	GIBSON COUNTY MUNICIPAL WATER DISTRICT #5	1025	02	GIBSON CO # 4
GIBSON	0000815	GIBSON COUNTY MUNICIPAL WATER DISTRICT #5	1025	01	WELL
GIBSON	0000816	GIBSON COUNTY MUNICIPAL WATER DISTRICT #6	408	02	GIBSON CO # 2
GIBSON	0000816	GIBSON COUNTY MUNICIPAL WATER DISTRICT #6	408	01	WELL
GIBSON	0000263	GIBSON WATER DEPARTMENT	490	01	WELLS
GIBSON	0000314	HUMBOLT UTILITIES-WATER DEPARTMENT	10059	01	WELLS
GIBSON	0000798	MILAN ARSENAL #1	775	01	WELLS
GIBSON	0000458	MILAN WATER DEPARTMENT	10237	01	WELLS
GIBSON	0000599	RUTHERFORD WATER SYSTEM	1530	01	WELLS

Appendix A

COUNTY	WATER SYSTEM ID.	COMMUNITY WATER SYSTEM	POPULATION	PARENT SYSTEM SOURCE #	WATER SOURCE
GIBSON	0000707	TRENTON WATER SYSTEM	4974	01	WELLS
GIBSON	0000707	TRENTON WATER SYSTEM	4974	02	GIBSON CO MUN
GILES	0000018	ARDMORE WATER SYSTEM	1359	02	SOUTH GILES UD
GILES	0000018	ARDMORE WATER SYSTEM	1359	01	WELLS
GILES	0000018	ARDMORE WATER SYSTEM	1359	03	LINCOLN COUNTY BPU #1
GILES	0000563	FAIRVIEW UTILITY DISTRICT	3367	01	PULASKI
GILES	0000419	LYNNVILLE WATER DEPARTMENT	753	01	FAIRVIEW UD
GILES	0000469	MINOR HILL WATER UTIL DISTRICT	5070	01	PULASKI WATER
GILES	0000469	MINOR HILL WATER UTIL DISTRICT	5070	02	LIMESTONE COUNTY, AL
GILES	0000562	PULASKI WATER SYSTEM	9341	01	RICHLAND CREEK
GILES	0000649	SOUTH GILES UTILITY DISTRICT	3483	01	LIMESTONE COUNTY, AL
GILES	0000649	SOUTH GILES UTILITY DISTRICT	3483	02	ARDMORE
GILES	0000649	SOUTH GILES UTILITY DISTRICT	3483	03	TARPLEY SHOP
GILES	0000566	TARPLEY SHOP UTILITY DISTRICT	2350	01	PULASKI
GILES	0000566	TARPLEY SHOP UTILITY DISTRICT	2350	02	FAIRVIEW UD
GILES	0000566	TARPLEY SHOP UTILITY DISTRICT	2350	03	SOUTH GILES UD
GRAINGER	0000041	BEAN STATION UTILITY DISTRICT	5613	01	MORRISTOWN
GRAINGER	0008036	HOLSTON RIVER BEND UTILITY DISTRICT	84	01	WELLS
GRAINGER	0000943	HOPPER'S BLUFF SUBDIVISION	108	01	WELLS
GRAINGER	0000600	RUTLEDGE WATER SYSTEM	1431	01	BEAN STATION UD
GREENE	0000108	CHUCKEY UTILITY DISTRICT	8694	01	GREENEVILLE UD
GREENE	0000108	CHUCKEY UTILITY DISTRICT	8694	02	JONESBORO UD
GREENE	0000108	CHUCKEY UTILITY DISTRICT	8694	04	CROSS ANCHOR
GREENE	0000108	CHUCKEY UTILITY DISTRICT	8694	03	GLEN HILLS UD
GREENE	0000149	CROSS ANCHOR UTILITY DISTRICT	6648	02	NORTH GREENE UD

Appendix A

COUNTY	WATER SYSTEM ID.	COMMUNITY WATER SYSTEM	POPULATION	PARENT SYSTEM SOURCE #	WATER SOURCE
GREENE	0000149	CROSS ANCHOR UTILITY DISTRICT	6648	01	GREENEVILLE UD
GREENE	0000266	GLEN HILLS UTILITY DISTRICT	11424	01	GREENEVILLE UD
GREENE	0000273	GREENEVILLE WATER & LIGHT COMMISSION	22851	01	NOLICHUCKY RIVER
GREENE	0000478	MOSHIEM UTILITY DISTRICT	1724	01	GREENEVILLE UD
GREENE	0000274	NORTH GREENE UTILITY DISTRICT	4241	01	LICK CREEK
GREENE	0000274	NORTH GREENE UTILITY DISTRICT	4241	02	MOSHEIM UD
GREENE	0000530	OLD KNOXVILLE HWY UTILITY DISTRICT	6683	02	MOSHEIM UD
GREENE	0000530	OLD KNOXVILLE HWY UTILITY DISTRICT	6683	01	GREENEVILLE UD
GRUNDY	0000122	BIG CREEK UTILITY DISTRICT	7838	01	RANGER CREEK IMPOUNDMENT
GRUNDY	0000122	BIG CREEK UTILITY DISTRICT	7838	02	TRACY CITY W.S.
GRUNDY	0000470	MONTEAGLE PUBLIC UTILITY BOARD	3028	01	LAUREL LAKE
GRUNDY	0000470	MONTEAGLE PUBLIC UTILITY BOARD	3028	02	SEWANEE U.D.
GRUNDY	0000470	MONTEAGLE PUBLIC UTILITY BOARD	3028	03	TRACY CITY W.S.
GRUNDY	0000706	TRACY CITY WATER SYSTEM	3459	01	BIG FIERY GIZZARD CREEK
GRUNDY	0000706	TRACY CITY WATER SYSTEM	3459	03	MONTEAGLE W.S.
GRUNDY	0000706	TRACY CITY WATER SYSTEM	3459	02	BIG CREEK UD
HAMBLEN	0000014	ALPHA-TALBOTT UTILITY DISTRICT	14546	01	MORRISTOWN
HAMBLEN	0000474	MORRISTOWN WATER SYSTEM	30612	02	SPRING
HAMBLEN	0000474	MORRISTOWN WATER SYSTEM	30612	01	HOLSTON RIVER
HAMBLEN	0000476	RINES' MOBILE HOME PARK	60	01	WELL
HAMBLEN	0000598	RUSSELLVILLE WHITESBURG UTILITY DISTRICT	15360	01	MORRISTOWN
HAMBLEN	0000598	RUSSELLVILLE WHITESBURG UTILITY DISTRICT	15360	02	NORTH GREENE UD
HAMBLEN	0000650	WITT UTILITY DISTRICT	3579	01	MORRISTOWN
HAMILTON	0008188	ARBOR CREEK APARTMENTS	500	01	TN-AMERICAN

Appendix A

COUNTY	WATER SYSTEM ID.	COMMUNITY WATER SYSTEM	POPULATION	PARENT SYSTEM SOURCE #	WATER SOURCE
HAMILTON	0008004	ASHFORD APARTMENTS, THE	448	01	TN-AMERICAN
HAMILTON	0008204	CAMERON HILL APARTMENTS #1	762	01	TN-AMERICAN
HAMILTON	0008205	CAMERON HILL APARTMENTS #2	260	01	TN-AMERICAN
HAMILTON	0008172	COURTS AT WATERFORD APARTMENTS	766	01	TN-AMERICAN
HAMILTON	0000219	EASTSIDE UTILITY DISTRICT	44585	11	SAVANNAH VALLEY
HAMILTON	0000219	EASTSIDE UTILITY DISTRICT	44585	09	CLEVELAND UD
HAMILTON	0000219	EASTSIDE UTILITY DISTRICT	44585	12	CATOOSA UD, GA
HAMILTON	0000219	EASTSIDE UTILITY DISTRICT	44585	03	SAVANNAH VALLEY
HAMILTON	0000219	EASTSIDE UTILITY DISTRICT	44585	02	TN-AMERICAN
HAMILTON	0000219	EASTSIDE UTILITY DISTRICT	44585	01	TENNESSEE RIVER
HAMILTON	0000975	FAIR MEADOWS MOBILE HOME PARK	202	01	HIXSON U.D.
HAMILTON	0008148	GREEN GABLES APARTMENT	87	01	TN AMERICAN
HAMILTON	0000906	GRINDSTONE ESTATES MOBILE HOME PARK	747	01	EASTSIDE UD
HAMILTON	0000965	HAMILTON POINTE APARTMENTS	870	01	TN-AMERICAN
HAMILTON	0000964	HIDDEN CREEK APARTMENTS	723	01	TN-AMERICAN
HAMILTON	0000303	HIXSON UTILITY DISTRICT	51649	01	WELLS
HAMILTON	0000168	MOWBRAY MOUNTAIN UTILITY DISTRICT	2834	01	SODDY-DAISY UD
HAMILTON	0008199	PINNACLE HOMES AT HARBOUR VIEW	742	01	TENN AMERICAN
HAMILTON	0008149	RAINBOW CREEK APARTMENTS	375	01	TN AMERICAN
HAMILTON	0000605	SALE CREEK UTILITY DISTRICT	1159	02	UNION FORK-BAKEWELL
HAMILTON	0000605	SALE CREEK UTILITY DISTRICT	1159	01	WELLS
HAMILTON	0000613	SAVANNAH VALLEY UTILITY DISTRICT	13667	01	WELLS
HAMILTON	0000613	SAVANNAH VALLEY UTILITY DISTRICT	13667	03	CLEVELAND UD
HAMILTON	0000613	SAVANNAH VALLEY UTILITY DISTRICT	13667	02	EASTSIDE UD

Appendix A

COUNTY	WATER SYSTEM ID.	COMMUNITY WATER SYSTEM	POPULATION	PARENT SYSTEM SOURCE #	WATER SOURCE
HAMILTON	0000634	SIGNAL MOUNTAIN WATER SYSTEM	7394	01	TN-AMERICAN
HAMILTON	0000634	SIGNAL MOUNTAIN WATER SYSTEM	7394	02	WALDEN RIDGE
HAMILTON	0000634	SIGNAL MOUNTAIN WATER SYSTEM	7394	03	SIGNAL MTN WS
HAMILTON	0000169	SODDY-DAISY-FALLING WATER UTILITY DISTRICT	9356	03	HIXSON U.D.
HAMILTON	0000169	SODDY-DAISY-FALLING WATER UTILITY DISTRICT	9356	02	WELL
HAMILTON	0000169	SODDY-DAISY-FALLING WATER UTILITY DISTRICT	9356	01	SODDY CREEK EMBAYMENT
HAMILTON	0000169	SODDY-DAISY-FALLING WATER UTILITY DISTRICT	9356	04	WALDEN RIDGE
HAMILTON	0000963	STEEPLE CHASE APARTMENTS	260	01	HIXSON U.D.
HAMILTON	0000107	TENN-AMERICAN WATER COMPANY	169389	03	HIXSON U.D. 2
HAMILTON	0000107	TENN-AMERICAN WATER COMPANY	169389	04	EASTSIDE UD
HAMILTON	0000107	TENN-AMERICAN WATER COMPANY	169389	01	TENNESSEE RIVER
HAMILTON	0000107	TENN-AMERICAN WATER COMPANY	169389	02	HIXSON U.D. 1
HAMILTON	0000037	UNION FORK-BAKEWELL UTILITY DISTRICT	3386	01	WELLS
HAMILTON	0000037	UNION FORK-BAKEWELL UTILITY DISTRICT	3386	02	SALE CREEK UD
HAMILTON	0000037	UNION FORK-BAKEWELL UTILITY DISTRICT	3386	03	SODDY-DAISY UD
HAMILTON	0000635	WALDEN RIDGE UTILITY DISTRICT	6061	02	SODDY-DAISY UD
HAMILTON	0000635	WALDEN RIDGE UTILITY DISTRICT	6061	01	WELLS
HAMILTON	0008116	WINDRIDGE APARTMENTS	419	01	TN-AMERICAN
HANCOCK	0000640	SNEEDVILLE UTILITY DISTRICT	2032	03	CLINCH RIVER
HANCOCK	0000640	SNEEDVILLE UTILITY DISTRICT	2032	02	BRIER CREEK TRIBUTARY
HANCOCK	0000640	SNEEDVILLE UTILITY DISTRICT	2032	01	SPRING

Appendix A

COUNTY	WATER SYSTEM ID.	COMMUNITY WATER SYSTEM	POPULATION	PARENT SYSTEM SOURCE #	WATER SOURCE
HARDEMAN	0000063	BOLIVAR WATER SYSTEM	7900	01	WELLS
HARDEMAN	0000267	GRAND JUNCTION WATER DEPARTMENT	1308	01	WELLS
HARDEMAN	0000451	GRAND VALLEY LAKES OWNERS ASSOCIATION	691	01	WELL
HARDEMAN	0000312	HORNSBY WATER DEPARTMENT	960	01	BOLIVAR
HARDEMAN	0000455	MIDDLETON WATER DEPARTMENT	886	01	WELLS
HARDEMAN	0000797	RIVIERA UTILITIES OF TENNESSEE	205	01	WELLS
HARDEMAN	0000452	ROGERS SPRINGS PROPERTY OWNERS ASSOCIATION	112	01	WELLS
HARDEMAN	0000664	SPRING CREEK UTILITY DISTRICT	2337	01	BOLIVAR
HARDEMAN	0000704	TOONE WATER SYSTEM	532	01	WELLS
HARDEMAN	0000748	WHITEVILLE WATER DEPARTMENT	1433	01	WELLS
HARDEMAN	0000446	WOODRUN LAKES S/D	142	01	WELLS
HARDIN	0000948	AQUA UTILITIES CO, INC	256	01	SAVANNAH UD
HARDIN	0000546	FIRST UTILITY DISTRICT OF HARDIN COUNTY	5632	01	TENNESSEE RIVER
HARDIN	0000923	HARBERT HILLS ACADEMY N.H.	89	01	WELLS
HARDIN	0000606	SALTILLO UTILITY DISTRICT	1746	01	WELLS
HARDIN	0000611	SAVANNAH UTILITY DEPARTMENT	16405	01	WELLS
HAWKINS	0000109	FIRST UTILITY DISTRICT OF HAWKINS COUNTY,#1	9574	02	HORD CREEK
HAWKINS	0000109	FIRST UTILITY DISTRICT OF HAWKINS COUNTY,#1	9574	01	ALEXANDER CREEK
HAWKINS	0000855	FIRST UTILITY DISTRICT OF HAWKINS COUNTY,#2	7590	01	SPRINGS
HAWKINS	0000384	LAKEMONT UTILITY DISTRICT	119	01	WELL
HAWKINS	0000596	LAKEVIEW UTILITY DISTRICT	2683	02	WELL
HAWKINS	0000596	LAKEVIEW UTILITY DISTRICT	2683	01	ROGERSVILLE

Appendix A

COUNTY	WATER SYSTEM ID.	COMMUNITY WATER SYSTEM	POPULATION	PARENT SYSTEM SOURCE #	WATER SOURCE
HAWKINS	0000939	MID HAWKINS COUNTY UTILITY DISTRICT	528	01	WELLS
HAWKINS	0000939	MID HAWKINS COUNTY UTILITY DISTRICT	528	02	ROGERSVILLE
HAWKINS	0000472	MOORESBURG UTILITY DISTRICT	810	01	SPRING
HAWKINS	0000472	MOORESBURG UTILITY DISTRICT	810	02	BEAN STATION UD
HAWKINS	0000761	NEW CANTON UTILITY DISTRICT	395	01	1ST UD HAWKINS #1
HAWKINS	0000594	PERSIA UTILITY DISTRICT	3802	01	ROGERSVILLE
HAWKINS	0000594	PERSIA UTILITY DISTRICT	3802	02	WELLS
HAWKINS	0000593	ROGERSVILLE WATER SYSTEM	8256	01	BIG CREEK
HAWKINS	0000593	ROGERSVILLE WATER SYSTEM	8256	02	WELLS
HAWKINS	0000673	STRIGGERSVILLE UTILITY DISTRICT	1099	01	ROGERSVILLE
HAWKINS	0000682	SURGOINSVILLE UTILITY DISTRICT	2064	01	SPRING
HAWKINS	0000682	SURGOINSVILLE UTILITY DISTRICT	2064	02	1ST UD HAWKINS #1
HAWKINS	0000682	SURGOINSVILLE UTILITY DISTRICT	2064	03	ROGERSVILLE
HAYWOOD	0000080	BROWNSVILLE WATER DEPARTMENT	14506	01	WELLS
HAYWOOD	0000999	HAYWOOD COUNTY UTILITY DISTRICT	789	02	STANTON
HAYWOOD	0000999	HAYWOOD COUNTY UTILITY DISTRICT	789	01	BROWNSVILLE
HAYWOOD	0000672	STANTON WATER SYSTEM	738	01	WELLS
HENDERSON	0000402	LEXINGTON WATER SYSTEMS	21867	01	BEECH LAKE
HENDERSON	0000609	SARDIS WATER SYSTEM	905	01	WELLS
HENDERSON	0000614	SCOTTS HILL WATER SYSTEM	3741	01	WELLS
HENRY	0000539	ANTIOCH WATER COMPANY	186	01	WELL
HENRY	0000933	COUNTRY JUNCTION	42	01	WELLS
HENRY	0000296	HENRY WATER SYSTEM	545	01	WELL
HENRY	0000540	NORTH EAST HENRY COUNTY UTILITY DISTRICT	3463	01	WELLS

Appendix A

COUNTY	WATER SYSTEM ID.	COMMUNITY WATER SYSTEM	POPULATION	PARENT SYSTEM SOURCE #	WATER SOURCE
HENRY	0000838	NORTHWEST HENRY COUNTY UTILITY DISTRICT	1091	01	PARIS W.S.
HENRY	0000536	PARIS BOARD OF PUBLIC UTILITIES	11608	01	WELLS
HENRY	0000568	PURYEAR WATER SYSTEM	882	01	WELLS
HENRY	0000537	SOUTH PARIS WATER CO OP	1918	01	PARIS W.S.
HICKMAN	0000066	BON AQUA-LYLES UTILITY DISTRICT	8089	04	PINEY RIVER
HICKMAN	0000066	BON AQUA-LYLES UTILITY DISTRICT	8089	03	FAIRVIEW
HICKMAN	0000066	BON AQUA-LYLES UTILITY DISTRICT	8089	02	MILL CREEK
HICKMAN	0000066	BON AQUA-LYLES UTILITY DISTRICT	8089	01	SPRING
HICKMAN	0000103	CENTERVILLE WATER SYSTEM	7793	01	BIG SWAN CREEK
HICKMAN	0000533	TURNEY CENTER	1380	01	DUCK RIVER
HOUSTON	0000230	ERIN WATER TREATMENT PLANT	5087	02	VANLEER
HOUSTON	0000230	ERIN WATER TREATMENT PLANT	5087	03	TN RIDGE
HOUSTON	0000230	ERIN WATER TREATMENT PLANT	5087	01	CUMBERLAND RIVER
HOUSTON	0000698	TENNESSEE RIDGE WATER SYSTEM	2744	01	WELLS
HOUSTON	0000698	TENNESSEE RIDGE WATER SYSTEM	2744	04	ERIN
HUMPHREYS	0000420	MCEWEN WATER DEPARTMENT	2739	01	WELLS
HUMPHREYS	0000921	NATCHEZ TRACE YOUTH ACADEMY	45	01	WELL
HUMPHREYS	0000497	NEW JOHNSONVILLE WATER DEPARTMENT	2176	01	KY LAKE
HUMPHREYS	0000733	WAVERLY WATER SYSTEM	6400	01	WELLS
HUMPHREYS	0000733	WAVERLY WATER SYSTEM	6400	02	DUCK RIVER
HUMPHREYS	0000958	WILDWOOD ESTATES	32	01	WELLS
JACKSON	0000251	GAINESBORO WATER SYSTEM	1436	01	CUMBERLAND RIVER
JACKSON	0000252	JACKSON COUNTY UTILITY DISTRICT #1	368	01	OLD GAINESBORO
JACKSON	0000817	JACKSON COUNTY UTILITY DISTRICT #2	1389	01	LIVINGSTON
JACKSON	0000845	JACKSON COUNTY UTILITY DISTRICT #3	1668	01	GAINESBORO

Appendix A

COUNTY	WATER SYSTEM ID.	COMMUNITY WATER SYSTEM	POPULATION	PARENT SYSTEM SOURCE #	WATER SOURCE
JACKSON	0000845	JACKSON COUNTY UTILITY DISTRICT #3	1668	02	OLD GAINESBORO
JACKSON	0000859	JACKSON COUNTY UTILITY DISTRICT #4	1683	01	RED BOILING SPRING U.D.
JEFFERSON	0000329	BANEBERRY UTILITY DISTRICT	538	01	WELLS
JEFFERSON	0000329	BANEBERRY UTILITY DISTRICT	538	02	WITT UD
JEFFERSON	0000170	DANDRIDGE WATER DEPARTMENT	4182	02	JEFFERSON CITY
JEFFERSON	0000170	DANDRIDGE WATER DEPARTMENT	4182	01	WELL & SPRINGS
JEFFERSON	0000328	JEFFERSON CITY WATER & SEWER CO	7234	01	MOSSY CREEK
JEFFERSON	0000328	JEFFERSON CITY WATER & SEWER CO	7234	02	JARNIGAN MINE WORKS
JEFFERSON	0000499	NEW MARKET UTILITY DISTRICT	3748	01	JEFFERSON CITY
JEFFERSON	0000626	SHADY GROVE UTILITY DISTRICT	13770	02	KNOXVILLE UB
JEFFERSON	0000626	SHADY GROVE UTILITY DISTRICT	13770	01	JEFFERSON CITY
JEFFERSON	0000626	SHADY GROVE UTILITY DISTRICT	13770	03	DANDRIDGE
JEFFERSON	0000994	SPRING VILLAGE MOBILE HOME PARK	97	01	WELL
JEFFERSON	0000746	WHITE PINE WATER SYSTEM	2721	04	WITT UD
JEFFERSON	0000746	WHITE PINE WATER SYSTEM	2721	01	WELLS
JOHNSON	0000480	BROWNLOW UTILITY DISTRICT	479	01	VAUGHTS CREEK
JOHNSON	0000085	CARDERVIEW UTILITY DISTRICT	781	01	WELLS
JOHNSON	0000485	COLD SPRINGS UTILITY DISTRICT	640	01	SPRING
JOHNSON	0000485	COLD SPRINGS UTILITY DISTRICT	640	02	MOUNTAIN CITY
JOHNSON	0000919	DRY RUN UTILITY DISTRICT	499	01	MOUNTAIN CITY
JOHNSON	0000479	MOUNTAIN CITY WATER DEPARTMENT	9330	01	SPRINGS
JOHNSON	0000479	MOUNTAIN CITY WATER DEPARTMENT	9330	02	SILVERLAKE
JOHNSON	0000479	MOUNTAIN CITY WATER DEPARTMENT	9330	03	LAUREL CREEK
KNOX	0000369	FIRST UTILITY DISTRICT OF KNOX COUNTY	64230	01	SINKING CREEK EMBAYMENT

Appendix A

COUNTY	WATER SYSTEM ID.	COMMUNITY WATER SYSTEM	POPULATION	PARENT SYSTEM SOURCE #	WATER SOURCE
KNOX	0000369	FIRST UTILITY DISTRICT OF KNOX COUNTY	64230	02	SPRING
KNOX	0008113	GROVE AT DEAN HILL APARTMENTS, THE	544	01	KNOXVILLE UB
KNOX	0000280	HALLSDALE POWELL UTILITY DISTRICT	57732	08	CLINTON U.D.
KNOX	0000280	HALLSDALE POWELL UTILITY DISTRICT	57732	07	WEST KNOX UD
KNOX	0000280	HALLSDALE POWELL UTILITY DISTRICT	57732	09	CLAIBORNE CO UD
KNOX	0000280	HALLSDALE POWELL UTILITY DISTRICT	57732	01	BEAVER CREEK
KNOX	0000280	HALLSDALE POWELL UTILITY DISTRICT	57732	02	MELTON HILL RESERVOIR
KNOX	0000280	HALLSDALE POWELL UTILITY DISTRICT	57732	03	SPRINGS
KNOX	0000280	HALLSDALE POWELL UTILITY DISTRICT	57732	04	NORTHEAST KNOX
KNOX	0000280	HALLSDALE POWELL UTILITY DISTRICT	57732	05	KNOXVILLE UB
KNOX	0000367	KNOX-CHAPMAN UTILITY DISTRICT	25410	03	TUCKALEECHEE U.D.
KNOX	0000367	KNOX-CHAPMAN UTILITY DISTRICT	25410	01	FRENCH BROAD RIVER
KNOX	0000367	KNOX-CHAPMAN UTILITY DISTRICT	25410	02	KNOXVILLE UB
KNOX	0000366	KNOXVILLE UTILITY BOARD #1 WHITAKER PLANT	195474	01	TENNESSEE RIVER
KNOX	0000515	NORTHEAST KNOX UTILITY DISTRICT	15761	01	HOLSTON RIVER
KNOX	0008112	RESERVE OF WESTLAND APTS, THE	600	01	FIRST UD KNOX
KNOX	0000371	WEST KNOX UTILITY DISTRICT	45040	01	MELTON HILL LAKE
KNOX	0000371	WEST KNOX UTILITY DISTRICT	45040	03	FIRST UD KNOX
KNOX	0000371	WEST KNOX UTILITY DISTRICT	45040	04	HALLSDALE POWEL
KNOX	0000371	WEST KNOX UTILITY DISTRICT	45040	05	KNOXVILLE UB
LAKE	0000575	REELFOOT UTILITY DISTRICT	683	01	WELLS
LAKE	0000579	RIDGELY WATER SYSTEM	2124	01	WELLS
LAKE	0000700	TIPTONVILLE WATER SYSTEM	2487	01	WELLS
LAUDERDALE	0000255	GATES WATER DEPARTMENT	842	01	WELLS

Appendix A

COUNTY	WATER SYSTEM ID.	COMMUNITY WATER SYSTEM	POPULATION	PARENT SYSTEM SOURCE #	WATER SOURCE
LAUDERDALE	0000279	HALLS WATER SYSTEM	5714	01	WELLS
LAUDERDALE	0000279	HALLS WATER SYSTEM	5714	02	GATES
LAUDERDALE	0000295	HENNING WATER DEPARTMENT	1311	02	RIPLEY
LAUDERDALE	0000295	HENNING WATER DEPARTMENT	1311	03	LAUDERDALE
LAUDERDALE	0000295	HENNING WATER DEPARTMENT	1311	01	WELLS
LAUDERDALE	0000581	LAUDERDALE CO WATER SYSTEM	10122	03	GATES
LAUDERDALE	0000581	LAUDERDALE CO WATER SYSTEM	10122	02	RIPLEY
LAUDERDALE	0000581	LAUDERDALE CO WATER SYSTEM	10122	04	HENNING
LAUDERDALE	0000581	LAUDERDALE CO WATER SYSTEM	10122	01	WELLS
LAUDERDALE	0000580	RIPLEY WATER SYSTEM	8694	01	WELLS
LAUDERDALE	0000580	RIPLEY WATER SYSTEM	8694	02	HENNING
LAUDERDALE	0000580	RIPLEY WATER SYSTEM	8694	03	LAUDERDALE
LAUDERDALE	0000245	WEST TENNESSEE STATE PENITENTIARY	2481	01	WELLS
LAWRENCE	0000239	FALL RIVER ROAD UTILITY DISTRICT	2376	01	LAWRENCEBURG
LAWRENCE	0000320	IRON CITY UTILITY DISTRICT	635	01	ST JOSEPH
LAWRENCE	0000392	LAWRENCEBURG WATER SYSTEM	17127	01	SPRING
LAWRENCE	0000392	LAWRENCEBURG WATER SYSTEM	17127	02	SHOAL CREEK
LAWRENCE	0000399	LEOMA UTILITY DISTRICT	2376	01	SPRING
LAWRENCE	0000399	LEOMA UTILITY DISTRICT	2376	02	WELL
LAWRENCE	0000399	LEOMA UTILITY DISTRICT	2376	03	LAWRENCEBURG
LAWRENCE	0000399	LEOMA UTILITY DISTRICT	2376	04	LORETTO WS
LAWRENCE	0000408	LORETTO WATER DEPARTMENT	3115	03	ST JOSEPH
LAWRENCE	0000408	LORETTO WATER DEPARTMENT	3115	01	SPRINGS
LAWRENCE	0000408	LORETTO WATER DEPARTMENT	3115	02	LEOMA
LAWRENCE	0000391	NEW PROSPECT UTILITY DISTRICT	1850	01	LAWRENCEBURG

Appendix A

COUNTY	WATER SYSTEM ID.	COMMUNITY WATER SYSTEM	POPULATION	PARENT SYSTEM SOURCE #	WATER SOURCE
LAWRENCE	0000389	NORTHEAST LAWRENCE UTILITY DISTRICT	1069	01	LAWRENCEBURG
LAWRENCE	0000604	ST JOSEPH WATER SYSTEM	1242	01	SPRING
LAWRENCE	0000604	ST JOSEPH WATER SYSTEM	1242	02	LORETTO WATER DEPT
LAWRENCE	0000676	SUMMERTOWN WATER SYSTEM	2739	01	WELLS
LAWRENCE	0000740	WEST POINT UTILITY DISTRICT	276	01	LORETTO
LEWIS	0000304	HOHENWALD WATER SYSTEM	8578	01	WELLS
LEWIS	0000678	THE FARM WATER SYSTEM	186	01	WELLS
LINCOLN	0000242	FAYETTEVILLE WATER SYSTEM	10131	01	ELK RIVER
LINCOLN	0000242	FAYETTEVILLE WATER SYSTEM	10131	02	SPRING
LINCOLN	0000764	LINCOLN COUNTY BOARD OF PUBLIC UTILITIES #1	15549	01	FAYETTEVILLE
LINCOLN	0000764	LINCOLN COUNTY BOARD OF PUBLIC UTILITIES #1	15549	02	WELLS
LINCOLN	0000884	LINCOLN COUNTY BOARD OF PUBLIC UTILITIES #2	1457	01	FAYETTEVILLE
LINCOLN	0000884	LINCOLN COUNTY BOARD OF PUBLIC UTILITIES #2	1457	02	FAYETTEVILLE #2
LINCOLN	0000544	PETERSBURG WATER SYSTEM	914	01	FAYETTEVILLE
LOUDON	0000971	CREEKSIDE MOBILE HOME SUBDIVISION	51	01	WELLS
LOUDON	0000396	LENOIR CITY UTILITY BOARD	16686	02	SPRING
LOUDON	0000396	LENOIR CITY UTILITY BOARD	16686	01	TENNESSEE RIVER
LOUDON	0000409	LOUDON UTILITIES BOARD	10297	02	SPRINGS
LOUDON	0000409	LOUDON UTILITIES BOARD	10297	01	TENNESSEE RIVER
LOUDON	0000434	MARTEL UTILITY DISTRICT	3001	01	LENOIR CITY U D
LOUDON	0000434	MARTEL UTILITY DISTRICT	3001	02	FIRST UD KNOX
LOUDON	0000871	TELLICO VILLAGE PRIVATE OWNERS ASSOCIATION	5537	01	TELLICO AREA SS

Appendix A

COUNTY	WATER SYSTEM ID.	COMMUNITY WATER SYSTEM	POPULATION	PARENT SYSTEM SOURCE #	WATER SOURCE
MACON	0000373	LAFAYETTE WATER SYSTEM	12567	01	SPRINGS
MACON	0000373	LAFAYETTE WATER SYSTEM	12567	02	BARREN RIVER
MACON	0000572	RED BOILING SPRINGS WATER SYSTEM	3822	01	SPRINGS
MADISON	0000299	JACKSON ENERGY AUTHORITY	78916	01	WELLS
MADISON	0000453	JACKSON ENERGY AUTHORITY - MERCER PLANT	149	01	WELLS
MADISON	0008130	LEWIS TRAILER PARK	107	01	WELLS
MADISON	0008197	OAKS APARTMENTS, THE	249	01	JACKSON ENERGY AUTHORITY
MADISON	0000298	WHISPERING PINES TRAILER COURT	122	01	WELLS
MARION	0008049	FOSTER FALLS UTILITY DISTRICT	559	01	TRACY CITY W.S.
MARION	0000278	GRIFFITH CREEK UTILITY DISTRICT	1126	01	BIG CREEK UD
MARION	0000325	JASPER WATER DEPARTMENT	8157	01	SPRING
MARION	0000325	JASPER WATER DEPARTMENT	8157	02	SEQUATCHIE RIVER
MARION	0000535	ORME WATER SYSTEM	87	01	SPRINGS
MARION	0000924	RIVER LANDING DEVELOPMENT	56	01	WELLS
MARION	0000651	SOUTH PITTSBURG WATER SYSTEM	6550	01	TENNESSEE RIVER
MARION	0000909	SUCK CREEK UTILITY DISTRICT	468	01	WELLS
MARION	0000750	WEST VALLEY WATER SYSTEM, INC.	2518	01	WHITWELL
MARION	0000749	WHITWELL WATER DEPARTMENT	4208	01	SEQUATCHIE RIVER
MARSHALL	0000104	CHAPEL HILL WATER SYSTEM	1236	01	WELLS
MARSHALL	0000104	CHAPEL HILL WATER SYSTEM	1236	02	MARSHALL COUNTY BPU
MARSHALL	0000139	CORNERSVILLE WATER DEPARTMENT	1146	01	LEWISBURG
MARSHALL	0000400	LEWISBURG WATER SYSTEM	13320	02	CITY LAKE
MARSHALL	0000400	LEWISBURG WATER SYSTEM	13320	01	DUCK RIVER
MARSHALL	0000105	MARSHALL COUNTY BOARD OF PUBLIC UTILITIES #1	4097	01	LEWISBURG

Appendix A

COUNTY	WATER SYSTEM ID.	COMMUNITY WATER SYSTEM	POPULATION	PARENT SYSTEM SOURCE #	WATER SOURCE
MARSHALL	0000105	MARSHALL COUNTY BOARD OF PUBLIC UTILITIES #1	4097	02	CHAPEL HILL
MARSHALL	0000857	MARSHALL COUNTY BOARD OF PUBLIC UTILITIES #2	1007	01	LEWISBURG
MARSHALL	0000858	MARSHALL COUNTY BOARD OF PUBLIC UTILITIES #3	504	01	LEWISBURG
MARSHALL	0000858	MARSHALL COUNTY BOARD OF PUBLIC UTILITIES #3	504	02	CORNERVILLE
MAURY	0000128	COLUMBIA WATER SYSTEM	46879	01	DUCK RIVER
MAURY	0000770	MAURY COUNTY WATER SYSTEM	13682	01	COLUMBIA
MAURY	0000770	MAURY COUNTY WATER SYSTEM	13682	02	SPRING HILL
MAURY	0000488	MOUNT PLEASANT WAT SYSTEM #1	6249	01	SPRINGS
MAURY	0000488	MOUNT PLEASANT WAT SYSTEM #1	6249	02	COLUMBIA
MAURY	0000667	SPRING HILL WATER DEPT	11610	01	COLUMBIA
MCMINN	0000024	ATHENS UTILITIES BOARD	17037	01	OOSTANAULA CREEK
MCMINN	0000024	ATHENS UTILITIES BOARD	17037	01	WELLS & SPRINGS
MCMINN	0000024	ATHENS UTILITIES BOARD	17037	02	HIWASSEE UC
MCMINN	0000106	CALHOUN-CHARLESTON UTILITY DISTRICT	1906	01	HIWASSEE UC
MCMINN	0000224	ENGLEWOOD WATER DEPARTMENT	2925	01	MIDDLE CREEK
MCMINN	0000233	ETOWAH UTILITIES	9080	01	HIWASSEE RIVER
MCMINN	0000510	NIOTA WATER SYSTEM	2353	01	ATHENS W. S.
MCMINN	0000510	NIOTA WATER SYSTEM	2353	02	HIWASSEE UC
MCMINN	0000576	RICEVILLE UTILITY DISTRICT	2384	01	HIWASSEE UC
MCMINN	0000576	RICEVILLE UTILITY DISTRICT	2384	02	ATHENS W. S.
MCNAIRY	0000002	ADAMSVILLE WATER SYSTEM	7676	01	WELLS
MCNAIRY	0000050	BETHEL SPRINGS WATER SYSTEM	968	01	WELLS

Appendix A

COUNTY	WATER SYSTEM ID.	COMMUNITY WATER SYSTEM	POPULATION	PARENT SYSTEM SOURCE #	WATER SOURCE
MCNAIRY	0000570	EASTVIEW UTILITY DISTRICT	1692	01	SELMER
MCNAIRY	0000454	MICHIE WATER DEPARTMENT	2425	01	WELLS
MCNAIRY	0000571	RAMER WATER DEPARTMENT	588	02	EASTVIEW UD
MCNAIRY	0000571	RAMER WATER DEPARTMENT	588	01	WELLS
MCNAIRY	0000615	SELMER WATER SYSTEM	17678	02	BETHEL SPRINGS
MCNAIRY	0000615	SELMER WATER SYSTEM	17678	03	MICHIE WS
MCNAIRY	0000615	SELMER WATER SYSTEM	17678	01	WELLS
MEIGS	0000183	DECATUR WATER DEPARTMENT	4682	01	WELL & SPRINGS
MONROE	0000426	HIWASSEE COLLEGE	450	01	SPRING
MONROE	0000936	LAUREL MTN LAKES WATER ASSOCIATION	79	01	WELLS
MONROE	0000425	MADISONVILLE WATER DEPARTMENT	9581	01	TELLICO AREA SS
MONROE	0000687	SWEETWATER UTILITY BOARD	10025	01	SWEETWATER CREEK
MONROE	0000687	SWEETWATER UTILITY BOARD	10025	02	SPRING
MONROE	0000726	TELLICO AREA SERVICES SYSTEM	6225	01	LITTLE TENNESSEE RIVER
MONROE	0000726	TELLICO AREA SERVICES SYSTEM	6225	02	S BLOUNT UD
MONROE	0000693	TELLICO PLAINS WATER DEPT	5076	01	WELLS
MONTGOMERY	0008139	BELLE FOREST APARTMENTS WATER SYSTEM	389	01	CLARKSVILLE
MONTGOMERY	0008010	CLARKSVILLE HOUSING AUTHORITY	68	01	CLARKSVILLE
MONTGOMERY	0000116	CLARKSVILLE WATER DEPARTMENT	115425	01	CUMBERLAND RIVER
MONTGOMERY	0000166	CUMBERLAND HEIGHTS UTILITY DISTRICT	3030	02	CUNNINGHAM UD
MONTGOMERY	0000166	CUMBERLAND HEIGHTS UTILITY DISTRICT	3030	01	CLARKSVILLE
MONTGOMERY	0000929	CUNNINGHAM EAST MONTGOMERY WATER TREATMENT PLANT	25	01	CUMBERLAND RIVER

Appendix A

COUNTY	WATER SYSTEM ID.	COMMUNITY WATER SYSTEM	POPULATION	PARENT SYSTEM SOURCE #	WATER SOURCE
MONTGOMERY	0000167	CUNNINGHAM UTILITY DISTRICT	9969	01	CUNNINGHAM-E. MONTGOMERY
MONTGOMERY	0000167	CUNNINGHAM UTILITY DISTRICT	9969	02	CLARKSVILLE
MONTGOMERY	0000820	FORT CAMPBELL WATER SYSTEM	40000	03	CLARKSVILLE
MONTGOMERY	0000820	FORT CAMPBELL WATER SYSTEM	40000	01	SPRING
MONTGOMERY	0000820	FORT CAMPBELL WATER SYSTEM	40000	02	RED RIVER
MONTGOMERY	0008147	RIVERSIDE APARTMENTS WATER SYSTEM	305	01	CLARKSVILLE
MONTGOMERY	0000758	WOODLAWN UTILITY DISTRICT	8029	01	CLARKSVILLE
MOORE	0000416	LYNCHBURG WATER DEPARTMENT	3389	01	TIMS FORD LAKE
MOORE	0000416	LYNCHBURG WATER DEPARTMENT	3389	02	MULBERRY CREEK
MORGAN	0000520	BRUSHY MOUNTAIN PRISON	500	01	LAKE IMPOUNDMENT
MORGAN	0000729	PLATEAU UTILITY DISTRICT	4804	02	CUMBERLAND UD
MORGAN	0000729	PLATEAU UTILITY DISTRICT	4804	01	CROOKED FORK CREEK
MORGAN	0000681	SUNBRIGHT UTILITY DISTRICT	4257	01	CUMBERLAND UD
MORGAN	0000681	SUNBRIGHT UTILITY DISTRICT	4257	02	HUNTSVILLE UD
MORGAN	0000681	SUNBRIGHT UTILITY DISTRICT	4257	03	PLATEAU UD
MORGAN	0000755	WOLFE BRANCH UTILITY DISTRICT	2959	01	HARRIMAN
OBION	0000220	ELBRIDGE WATER ASSOCIATION	3049	02	WELLS
OBION	0000311	HORNBEAK UTILITY DISTRICT	1295	02	ELBRIDGE
OBION	0000311	HORNBEAK UTILITY DISTRICT	1295	01	WELLS
OBION	0000347	KENTON WATER DEPARTMENT	1644	01	WELLS
OBION	0000347	KENTON WATER DEPARTMENT	1644	02	RUTHERFORD
OBION	0000935	MASON HALL DEVELOPMENT CORPORATION	194	01	WELLS
OBION	0000524	OBION WATER DEPARTMENT	1895	01	WELLS

Appendix A

COUNTY	WATER SYSTEM ID.	COMMUNITY WATER SYSTEM	POPULATION	PARENT SYSTEM SOURCE #	WATER SOURCE
OBION	0000757	REELFOOT WATER ASSOCIATION	721	01	UNION CITY
OBION	0000607	SAMBURG UTILITY DISTRICT	748	01	REELFOOT U D
OBION	0000648	SOUTH FULTON WATER SYSTEM	4491	01	WELLS
OBION	0000648	SOUTH FULTON WATER SYSTEM	4491	02	FULTON, KY
OBION	0000712	TROY WATER SYSTEM	2056	01	WELLS
OBION	0000720	UNION CITY WATER DEPT	16287	01	WELLS
OVERTON	0000853	EAST FORK UTILITY DISTRICT	2137	01	MONTEREY
OVERTON	0000405	LIVINGSTON WATER DEPARTMENT	10847	01	CARR CREEK IMPOUNDMENT
OVERTON	0000405	LIVINGSTON WATER DEPARTMENT	10847	02	ROARING RIVER
OVERTON	0000013	NORTH OVERTON UTILITY DISTRICT	3393	01	LIVINGSTON
OVERTON	0000578	WEST OVERTON UTILITY DISTRICT	5017	01	LIVINGSTON
OVERTON	0000578	WEST OVERTON UTILITY DISTRICT	5017	02	ALGOOD
PERRY	0000404	LINDEN WATER DEPARTMENT	4300	01	BUFFALO RIVER
PERRY	0000406	LOBELVILLE WATER DEPARTMENT	1781	01	BUFFALO RIVER
PICKETT	0000088	BYRDSTOWN WATER DEPARTMENT	4765	01	DALE HOLLOW LAKE
PLOK	0000049	HIWASSEE WATER CO-OP	1014	01	ETOWAH
POLK	0000048	BENTON WATER SYSTEM	2337	03	HIWASSEE CO-OP
POLK	0000048	BENTON WATER SYSTEM	2337	02	OCOEE UD
POLK	0000048	BENTON WATER SYSTEM	2337	01	WELL
POLK	0000138	CHEROKEE HILLS UTILITY DISTRICT	314	01	SPRINGS
POLK	0000844	COPPER BASIN UTILITY DISTRICT	2342	01	CAMPBELL COVE LAKE
POLK	0000136	COPPERHILL WATER DEPARTMENT	833	01	MCCAYSVILLE, GA
POLK	0000049	HIWASSEE WATER CO-OP	1014	02	BENTON WS
PUTNAM	0000009	ALGOOD WATER SYSTEM	5468	01	COOKEVILLE
PUTNAM	0000038	BANGHAM UTILITY DISTRICT	5971	01	COOKEVILLE

Appendix A

COUNTY	WATER SYSTEM ID.	COMMUNITY WATER SYSTEM	POPULATION	PARENT SYSTEM SOURCE #	WATER SOURCE
PUTNAM	0000040	BAXTER WATER DEPARTMENT	4207	01	COOKEVILLE
PUTNAM	0000134	COOKEVILLE BOAT DOCK ROAD UTILITY DISTRICT	5390	01	COOKEVILLE
PUTNAM	0000133	COOKEVILLE WATER DEPARTMENT	29932	01	CENTER HILL LAKE
PUTNAM	0000192	DOUBLE SPRINGS UTILITY DISTRICT	4866	01	COOKEVILLE
PUTNAM	0000952	HERITAGE ACADEMY	80	01	WELL
PUTNAM	0000471	MONTEREY WATER DEPARTMENT	4300	02	MEADOW CREEK LAKE
PUTNAM	0000471	MONTEREY WATER DEPARTMENT	4300	01	CITY LAKE
PUTNAM	0000135	OLD GAINESBORO ROAD UTILITY DISTRICT	4704	01	COOKEVILLE
RHEA	0000174	DAYTON WATER DEPARTMENT	16632	01	TENNESSEE RIVER
RHEA	0000863	GRANDVIEW UTILITY DISTRICT	1378	01	CROSSVILLE
RHEA	0000863	GRANDVIEW UTILITY DISTRICT	1378	02	CRAB ORCHARD UD
RHEA	0000269	GRAYSVILLE WATER DEPARTMENT	1673	01	WELLS
RHEA	0000269	GRAYSVILLE WATER DEPARTMENT	1673	02	DAYTON WS
RHEA	0000178	LAURELBROOK SCHOOL	100	02	DAYTON WS
RHEA	0000178	LAURELBROOK SCHOOL	100	01	WELL
RHEA	0000657	NEWPORT RESORT WATER SYSTEM	118	01	WELL
RHEA	0000970	NORTH UTILITY DISTRICT OF RHEA COUNTY	1368	01	SPRING CITY W S
RHEA	0000656	SPRING CITY WATER SYSTEM	2413	01	PINEY RIVER
RHEA	0000872	WATTS BAR UTILITY DISTRICT	7454	01	WELLS
RHEA	0000663	YOST TRAILER PARK	25	01	WELLS
ROANE	0000531	CUMBERLAND UTILITY DISTRICT	9704	01	LITTLE EMORY RIVER
ROANE	0000287	HARRIMAN UTILITY BOARD	8685	01	EMORY RIVER
ROANE	0000976	HELTON ESTATES MOBILE HOME PARK	82	01	WELL
ROANE	0000360	KINGSTON WATER SYSTEM	8384	01	WATTS BAR LAKE

Appendix A

COUNTY	WATER SYSTEM ID.	COMMUNITY WATER SYSTEM	POPULATION	PARENT SYSTEM SOURCE #	WATER SOURCE
ROANE	0000360	KINGSTON WATER SYSTEM	8384	02	SPRING
ROANE	0000361	LEWANDS WATER SYSTEM	61	01	WELLS
ROANE	0000523	OLIVER SPRINGS WATER BOARD	5323	01	SPRING
ROANE	0000523	OLIVER SPRINGS WATER BOARD	5323	02	ANDERSON CO U B
ROANE	0000457	ROANE CENTRAL UTILITY DISTRICT	4048	01	ROCKWOOD
ROANE	0000590	ROCKWOOD WATER SYSTEM	9591	01	WATTS BAR LAKE
ROANE	0000686	SWAN POND UTILITY DISTRICT	696	01	HARRIMAN
ROANE	0000969	WATTS BAR UTILITY DISTRICT EAST	1396	01	KINGSTON
ROBERTSON	0000001	ADAMS-CEDAR HILL WATER SYSTEM	3947	01	RED RIVER
ROBERTSON	0000271	GREENBRIER WATER & SEWER DEPARTMENT	5451	01	SPRINGFIELD
ROBERTSON	0000666	SPRINGFIELD WATER SYSTEM	28155	02	EAST MONTGOMERY
ROBERTSON	0000666	SPRINGFIELD WATER SYSTEM	28155	01	RED RIVER
RUTHERFORD	0008006	BIRCHWOOD APARTMENTS	215	01	MURFREESBORO
RUTHERFORD	0000978	CEDAR PARK MOBILE HOME PARK	488	01	MURFREESBORO
RUTHERFORD	0008052	CEDAR RIDGE APARTMENTS	403	01	LAVERGNE
RUTHERFORD	0008182	CHELSEA PLACE APARTMENT	1590	01	MURFREESBORO
RUTHERFORD	0000997	COLONY HOUSE APARTMENTS	522	01	MURFREESBORO WD
RUTHERFORD	0000791	CONSOLIDATED UTILITY DISTRICT #1,RUTHERFORD	66021	02	MURFREESBORO
RUTHERFORD	0000791	CONSOLIDATED UTILITY DISTRICT #1,RUTHERFORD	66021	03	SMYRNA
RUTHERFORD	0000791	CONSOLIDATED UTILITY DISTRICT #1,RUTHERFORD	66021	01	EAST FORK STONES RIVER
RUTHERFORD	0000979	HOLLY PARK APARTMENTS	377	01	MURFREESBORO
RUTHERFORD	0000386	LA VERGNE WATER SYSTEM	21227	01	PERCY PRIEST LAKE
RUTHERFORD	0000386	LA VERGNE WATER SYSTEM	21227	02	NASHVILLE

Appendix A

COUNTY	WATER SYSTEM ID.	COMMUNITY WATER SYSTEM	POPULATION	PARENT SYSTEM SOURCE #	WATER SOURCE
RUTHERFORD	0000386	LA VERGNE WATER SYSTEM	21227	03	SMYRNA
RUTHERFORD	0000491	MURFREESBORO WATER DEPARTMENT	62426	04	PERCY PRIEST LAKE
RUTHERFORD	0000491	MURFREESBORO WATER DEPARTMENT	62426	03	CONSOLIDATED UD
RUTHERFORD	0000491	MURFREESBORO WATER DEPARTMENT	62426	01	EAST FORK STONES RIVER
RUTHERFORD	0000491	MURFREESBORO WATER DEPARTMENT	62426	02	SMYRNA
RUTHERFORD	0000983	OAK PARK II APARTMENTS	78	01	MURFREESBORO WD
RUTHERFORD	0008196	PADDOCK CLUB APARTMENTS	636	01	CONSOLIDATED UD
RUTHERFORD	0000984	PARK IV APARTMENTS	86	01	CONSOLIDATED UD
RUTHERFORD	0000639	SMYRNA WATER SYSTEM	27308	01	STONES RIVER
RUTHERFORD	0000639	SMYRNA WATER SYSTEM	27308	02	MURFREESBORO
RUTHERFORD	0000639	SMYRNA WATER SYSTEM	27308	03	CONSOLIDATED UD
RUTHERFORD	0000639	SMYRNA WATER SYSTEM	27308	04	LAVERGNE
RUTHERFORD	0008133	SUMMER CREEK APARTMENTS	419	01	LAVERGNE
RUTHERFORD	0008008	TIVOLI PLACE APARTMENTS	164	01	MURFREESBORO
RUTHERFORD	0008102	WATERFORD PLACE APARTMENTS	495	01	CONSOLIDATED UD
SCOTT	0000318	HUNTSVILLE UTILITY DISTRICT	11390	01	FLAT CREEK IMPOUNDMENT
SCOTT	0000318	HUNTSVILLE UTILITY DISTRICT	11390	02	NEW RIVER
SCOTT	0000318	HUNTSVILLE UTILITY DISTRICT	11390	03	ONEIDA
SCOTT	0000532	ONEIDA W&S COMMISSION	10761	01	HOWARD BAKER LAKE
SCOTT	0000532	ONEIDA W&S COMMISSION	10761	02	WELL
SCOTT	0000532	ONEIDA W&S COMMISSION	10761	03	HUNTSVILLE
SCOTT	0000532	ONEIDA W&S COMMISSION	10761	04	CITY PARK LAKE
SEQUATCHIE	0000927	CAGLE-FREDONIA UTILITY DISTRICT	1381	01	BIG CREEK UD
SEQUATCHIE	0000927	CAGLE-FREDONIA UTILITY DISTRICT	1381	02	WARREN CO UD
SEQUATCHIE	0000205	DUNLAP WATER SYSTEM	5169	01	SEQUATCHIE RIVER

Appendix A

COUNTY	WATER SYSTEM ID.	COMMUNITY WATER SYSTEM	POPULATION	PARENT SYSTEM SOURCE #	WATER SOURCE
SEVIER	0000849	CHALET VILLAGE NORTH	1290	01	WELLS
SEVIER	0000849	CHALET VILLAGE NORTH	1290	02	GATLINBURG
SEVIER	0000998	COVE MOUNTAIN MOBILE HOME PARK	98	01	WELLS
SEVIER	0000618	EAST SEVIER COUNTY UTILITY DISTRICT	755	01	WELLS
SEVIER	0000256	GATLINBURG WATER DEPARTMENT	8323	02	PIGEON FORGE
SEVIER	0000256	GATLINBURG WATER DEPARTMENT	8323	01	LITTLE PIGEON RIVER
SEVIER	0000270	GREAT SMOKY MOUNTAINS NATIONAL PARK	4700	01	WELL
SEVIER	0000841	NORTON CREEK WATER SYSTEM	106	01	WELL
SEVIER	0000548	PIGEON FORGE	8325	01	WALDEN'S CREEK
SEVIER	0000548	PIGEON FORGE	8325	02	SEVIERVILLE
SEVIER	0000548	PIGEON FORGE	8325	04	QUARRY
SEVIER	0000548	PIGEON FORGE	8325	03	DOUGLAS LAKE
SEVIER	0000925	RIVERSIDE CAMPGROUND	92	01	WELL
SEVIER	0000617	SEVIERVILLE WATER SYSTEM	18318	02	PIGEON FORGE
SEVIER	0000617	SEVIERVILLE WATER SYSTEM	18318	01	LITTLE PIGEON RIVER
SEVIER	0008140	WEARS VALLEY RANCH	35	01	WELL
SEVIER	0000261	WEBB CREEK UTILITY DISTRICT	1432	01	WELLS
SEVIER	0000261	WEBB CREEK UTILITY DISTRICT	1432	02	NEWPORT U.B.
SHELBY	0008164	ALEXAN WOLF RIVER APARTMENTS	780	01	MEMPHIS LIGHT, GAS & WATER
SHELBY	0008117	ARBORS OF CENTURY CENTER	1092	01	MEMPHIS LIGHT, GAS & WATER
SHELBY	0008118	AUTUM CREEK APARTMENTS	546	01	MEMPHIS LIGHT, GAS & WATER
SHELBY	0000765	BARTLETT WATER SYSTEM	45108	01	WELLS
SHELBY	0008024	BRIAR CLUB APARTMENTS	707	01	MEMPHIS LIGHT, GAS & WATER
SHELBY	0008198	CEDAR MILLS APARTMENTS	718	01	MEMPHIS LIGHT GAS & WATER

Appendix A

COUNTY	WATER SYSTEM ID.	COMMUNITY WATER SYSTEM	POPULATION	PARENT SYSTEM SOURCE #	WATER SOURCE
SHELBY	0008025	CINNAMON TRAILS APARTMENTS	541	01	MEMPHIS LIGHT GAS & WATER
SHELBY	0000126	COLLIERVILLE WATER DEPARTMENT	35775	01	WELLS
SHELBY	0008170	COUNTRY SQUIRE APARTMENTS	2527	01	MEMPHIS LIGHT, GAS & WATER
SHELBY	0008186	CROSSINGS APARTMENTS, THE	208	01	MEMPHIS LIGHT, GAS & WATER
SHELBY	0008203	DEERFIELD APARTMENTS	354	01	MEMPHIS LIGHT, GAS & WATER
SHELBY	0008026	DOGWOOD CREEK APARTMENTS	723	01	COLLIERVILLE
SHELBY	0008155	EASTVIEW APARTMENTS	1123	01	MEMPHIS LIGHT, GAS & WATER
SHELBY	0008119	FARMINGTON GATES APARTMENTS	473	01	GERMANTOWN
SHELBY	0000262	GERMANTOWN WATER DEPARTMENT	40200	01	WELLS
SHELBY	0000262	GERMANTOWN WATER DEPARTMENT	40200	02	MEMPHIS LIGHT GAS & WATER
SHELBY	0008154	GLENEAGLE APARTMENTS	493	01	MEMPHIS LIGHT, GAS & WATER
SHELBY	0008167	GREENBROOK BEND APARTMENTS	2681	01	MEMPHIS LIGHT, GAS & WATER
SHELBY	0008195	GREENVIEW TOWNHOMES APARTMENTS	411	01	MEMPHIS LIGHT, GAS & WATER
SHELBY	0008161	GROVE AT ISLAND DRIVE APARTMENTS	564	01	MEMPHIS LIGHT, GAS & WATER
SHELBY	0008153	HICKORY FARMS APARTMENTS	520	01	MEMPHIS LIGHT, GAS & WATER
SHELBY	0008027	HICKORY POINTE APARTMENTS	624	01	MEMPHIS LIGHT, GAS & WATER
SHELBY	0008028	HUNTERS TRACE APARTMENTS	499	01	MEMPHIS LIGHT, GAS & WATER
SHELBY	0008185	KIRBY STATION APARTMENTS	965	01	MEMPHIS LIGHT, GAS & WATER
SHELBY	0008163	LEGACY FARMS APARTMENTS	957	01	COLLIERVILLE

Appendix A

COUNTY	WATER SYSTEM ID.	COMMUNITY WATER SYSTEM	POPULATION	PARENT SYSTEM SOURCE #	WATER SOURCE
SHELBY	0008166	LINCOLN ON THE GREEN APARTMENTS.	1607	01	MEMPHIS LIGHT, GAS & WATER
SHELBY	0008162	MADISON AT SCHILLING FARMS APARTMENTS	842	01	COLLIERVILLE
SHELBY	0000450	MEMPHIS LIGHT, GAS, & WATER	661426	01	WELLS
SHELBY	0000463	MILLINGTON WATER DEPARTMENT	7155	02	MEMPHIS LIGHT, GAS & WATER
SHELBY	0000463	MILLINGTON WATER DEPARTMENT	7155	01	WELLS
SHELBY	0000468	NAVAL SUPPORT ACTIVITIES - MIDSOUTH	6300	01	WELLS
SHELBY	0008187	PARK ESTATES APARTMENTS	213	01	MEMPHIS LIGHT, GAS & WATER
SHELBY	0008048	RESERVE AT DEXTER LAKE, THE	1924	01	BARTLETT
SHELBY	0008120	RIDGEWAY COMMONS APARTMENTS	330	01	MEMPHIS LIGHT, GAS & WATER
SHELBY	0008189	RIVER TRACE APARTMENTS	1144	01	MEMPHIS LIGHT, GAS & WATER
SHELBY	0008194	TRAILS OF KIRBY PKWY APARTMENTSS, THE	978	01	MEMPHIS LIGHT, GAS & WATER
SHELBY	0008029	TRAILS OF MT MORIAH APARTMENTS, THE	1638	01	MEMPHIS LIGHT, GAS & WATER
SHELBY	0008122	TRINITY LAKES APARTMENTS	858	01	MEMPHIS LIGHT, GAS & WATER
SHELBY	0008123	VILLAGES AT SYCAMORE RIDGE APARTMENTS	296	01	MLGW
SHELBY	0008171	WATERGROVE APARTMENTS	2605	01	MEMPHIS LIGHT, GAS & WATER
SHELBY	0008124	WYNDRIDGE APARTMENTS	1477	01	MEMPHIS LIGHT, GAS & WATER
SMITH	0000095	CARTHAGE WATER SYSTEM	2631	01	CUMBERLAND RIVER
SMITH	0000096	CORDELL HULL UTILITY DISTRICT	2057	01	CARTHAGE
SMITH	0000636	SMITH UTILITY DISTRICT	5840	01	CANEY FORK RIVER

Appendix A

COUNTY	WATER SYSTEM ID.	COMMUNITY WATER SYSTEM	POPULATION	PARENT SYSTEM SOURCE #	WATER SOURCE
SMITH	0000636	SMITH UTILITY DISTRICT	5840	02	BAXTER W S
SMITH	0000904	SOUTH SIDE UTILITY DISTRICT #1	2823	03	BAXTER
SMITH	0000904	SOUTH SIDE UTILITY DISTRICT #1	2823	01	SMITH CO.U.D.#1
SMITH	0000904	SOUTH SIDE UTILITY DISTRICT #1	2823	02	HARTSVILLE
SMITH	0000910	SOUTH SIDE UTILITY DISTRICT #2	131	01	BAXTER W S
SMITH	0000953	SOUTH SIDE UTILITY DISTRICT #3	104	01	TWENTY-FIVE UD
SMITH	0000718	TWENTY FIVE UTILITY DISTRICT	1608	01	CARTHAGE
STEWART	0000162	CUMBERLAND CITY WATER SYSTEM	650	01	ERIN
STEWART	0000962	DOALNARA RESTORATION SOCIETY USA	150	01	WELLS
STEWART	0000193	DOVER WATER DEPARTMENT	2861	01	CUMBERLAND RIVER
STEWART	0000960	HIDDEN HOLLOW WATER SYSTEM	78	01	WELL
STEWART	0000916	LEATHERWOOD WATER DISTRICT, INC	316	01	WELLS
STEWART	0000083	LOON BAY PROPERTY OWNERS ASSOCIATION	127	01	WELLS
STEWART	0000195	NORTH STEWART UTILITY DISTRICT	3959	01	WELLS & SPRING
STEWART	0000195	NORTH STEWART UTILITY DISTRICT	3959	02	WOODLAWN UD
SULLIVAN	0000056	BLOOMINGDALE UTILITY DISTRICT	12268	02	KINGSPORT
SULLIVAN	0000056	BLOOMINGDALE UTILITY DISTRICT	12268	01	REEDY CREEK
SULLIVAN	0000057	BLOUNTVILLE UTILITY DISTRICT	9186	03	TRI-CITIES SULLIVAN
SULLIVAN	0000057	BLOUNTVILLE UTILITY DISTRICT	9186	02	BRISTOL-BLUFF CITY
SULLIVAN	0000057	BLOUNTVILLE UTILITY DISTRICT	9186	01	BRISTOL W.D.
SULLIVAN	0000061	BLUFF CITY WATER DEPARTMENT	2291	02	BRISTOL-BLUFF CITY
SULLIVAN	0000061	BLUFF CITY WATER DEPARTMENT	2291	01	SPRING
SULLIVAN	0000073	BRISTOL DEPARTMENT UTILITIES	28635	01	SOUTH FORK HOLSTON RIVER

Appendix A

COUNTY	WATER SYSTEM ID.	COMMUNITY WATER SYSTEM	POPULATION	PARENT SYSTEM SOURCE #	WATER SOURCE
SULLIVAN	0000079	BRISTOL-BLUFF CITY UTILITY DISTRICT	4755	02	BRISTOL W.D.
SULLIVAN	0000079	BRISTOL-BLUFF CITY UTILITY DISTRICT	4755	01	SOUTH FORK HOLSON RIVER
SULLIVAN	0000062	CHINQUAPIN GROVE UTILITY DISTRICT	1933	01	SPRINGS
SULLIVAN	0000062	CHINQUAPIN GROVE UTILITY DISTRICT	1933	04	BLUFF CITY
SULLIVAN	0000062	CHINQUAPIN GROVE UTILITY DISTRICT	1933	03	ELIZABETHTON
SULLIVAN	0000062	CHINQUAPIN GROVE UTILITY DISTRICT	1933	02	JOHNSON CITY WD
SULLIVAN	0000074	HOLSTON UTILITY DISTRICT	2395	01	BRISTOL W.D.
SULLIVAN	0000074	HOLSTON UTILITY DISTRICT	2395	02	S.BRISTOL-WEAVER
SULLIVAN	0000319	INTERMONT UTILITY DISTRICT	600	01	BRISTOL W.D.
SULLIVAN	0000078	JACOBS CREEK JOB CORPS - US FOREST SERVICE	300	01	LITTLE JACOB CREEK
SULLIVAN	0000349	KINGSPORT WATER DEPARTMENT	87202	01	SOUTH HOLSTON RIVER
SULLIVAN	0000349	KINGSPORT WATER DEPARTMENT	87202	02	JOHNSON CITY WD
SULLIVAN	0000349	KINGSPORT WATER DEPARTMENT	87202	03	BLOOMINGDALE
SULLIVAN	0000926	ROBINDALE WATER ASSOCIATION	50	01	WELLS
SULLIVAN	0000644	SOUTH BRISTOL-WEAVER PIKE UTILITY DISTRICT	5142	01	BRISTOL-BLUFF CITY
SULLIVAN	0000644	SOUTH BRISTOL-WEAVER PIKE UTILITY DISTRICT	5142	02	BRISTOL W.D.
SULLIVAN	0000058	TRI-CITIES/SULLIVAN UTILITY DISTRICT	3124	02	JOHNSON CITY WD
SULLIVAN	0000058	TRI-CITIES/SULLIVAN UTILITY DISTRICT	3124	01	BRISTOL-BLUFF CITY
SUMNER	0000097	CASTALIAN SPRINGS-BETHPAGE UTILITY DISTRICT	7631	01	GALLATIN
SUMNER	0000097	CASTALIAN SPRINGS-BETHPAGE UTILITY DISTRICT	7631	03	HARTSVILLE
SUMNER	0000097	CASTALIAN SPRINGS-BETHPAGE UTILITY DISTRICT	7631	02	WESTMORELAND

Appendix A

COUNTY	WATER SYSTEM ID.	COMMUNITY WATER SYSTEM	POPULATION	PARENT SYSTEM SOURCE #	WATER SOURCE
SUMNER	0008053	COUNTRY LIVING ESTATES MOBILE HOME PARK	332	01	WHITE HOUSE UD
SUMNER	0000253	GALLATIN WATER DEPARTMENT	28309	01	CUMBERLAND RIVER
SUMNER	0000294	HENDERSONVILLE UTILITY DISTRICT	37811	01	OLD HICKORY LAKE
SUMNER	0008020	HICKORY RUN APARTMENTS	814	01	WHITE HOUSE UD
SUMNER	0008014	LITTLESTONE OF VILLAGE GREEN	530	01	GALLATIN
SUMNER	0008064	MONTHAVEN PARK APARTMENTS	993	01	WHITE HOUSE UD
SUMNER	0000559	PORTLAND WATER SYSTEM	14288	01	CITY LAKE
SUMNER	0000559	PORTLAND WATER SYSTEM	14288	02	DRAKES CREEK
SUMNER	0000559	PORTLAND WATER SYSTEM	14288	03	SPORTSMAN LAKE
SUMNER	0000559	PORTLAND WATER SYSTEM	14288	04	FRANKLIN, KY
SUMNER	0008173	STERLING COVE CONDOMINIUMS	158	01	HENDERSONVILLE
SUMNER	0000738	WESTMORELAND WATER SYSTEM	3510	01	GALLATIN
SUMNER	0000745	WHITE HOUSE UTILITY DISTRICT	64289	01	OLD HICKORY LAKE
SUMNER	0008023	WILLIAMSBURG APARTMENTS	831	01	HENDERSONVILLE
TIPTON	0000033	ATOKA WATER SYSTEM	4017	01	MUNFORD
TIPTON	0000070	BRIGHTON WATER SYSTEM	2734	02	WELLS
TIPTON	0000070	BRIGHTON WATER SYSTEM	2734	01	POPLAR GROVE UD
TIPTON	0000144	COVINGTON WATER DEPARTMENT	10565	02	POPLAR GROVE UD
TIPTON	0000144	COVINGTON WATER DEPARTMENT	10565	01	WELLS
TIPTON	0000144	COVINGTON WATER DEPARTMENT	10565	03	1ST UD TIPTON
TIPTON	0000703	FIRST UTILITY DISTRICT OF TIPTON COUNTY	8305	01	WELLS
TIPTON	0000703	FIRST UTILITY DISTRICT OF TIPTON COUNTY	8305	02	COVINGTON
TIPTON	0000440	MASON WATER DEPARTMENT	2199	01	WELLS

Appendix A

COUNTY	WATER SYSTEM ID.	COMMUNITY WATER SYSTEM	POPULATION	PARENT SYSTEM SOURCE #	WATER SOURCE
TIPTON	0000490	MUNFORD WATER DEPARTMENT	7365	01	WELLS
TIPTON	0000490	MUNFORD WATER DEPARTMENT	7365	02	POPLAR GROVE UD
TIPTON	0000201	POPLAR GROVE UTILITY DISTRICT	15147	01	WELLS
TIPTON	0000201	POPLAR GROVE UTILITY DISTRICT	15147	02	MEMPHIS LIGHT, GAS & WATER
TIPTON	0000201	POPLAR GROVE UTILITY DISTRICT	15147	04	COVINGTON
TIPTON	0000201	POPLAR GROVE UTILITY DISTRICT	15147	03	MUNFORD
TROUSDALE	0000291	HARTSVILLE WATER DEPARTMENT	6390	01	CUMBERLAND RIVER
UNICOI	0000231	ERWIN UTILITIES	11818	01	WELLS & SPRINGS
UNICOI	0000719	UNICOI UTILITY DISTRICT	4044	01	ERWIN UTILITIES
UNICOI	0000719	UNICOI UTILITY DISTRICT	4044	02	JOHNSON CITY WD
UNION	0000899	HICKORY STAR MARINA	110	01	SPRING
UNION	0000899	HICKORY STAR MARINA	110	02	MAYNARDVILLE
UNION	0000415	LUTTRELL-BLAINE-CORRYTON UTILITY DISTRICT	6039	02	NORTHEAST KNOX
UNION	0000415	LUTTRELL-BLAINE-CORRYTON UTILITY DISTRICT	6039	01	SPRINGS
UNION	0000442	MAYNARDVILLE WATER DEPARTMENT	4905	01	WELLS & SPRINGS
UNION	0000442	MAYNARDVILLE WATER DEPARTMENT	4905	02	NORTHEAST KNOX
VAN BUREN	0000552	FALL CREEK FALLS UTILITY DISTRICT	3429	01	TAFT YOUTH CENTER
VAN BUREN	0000655	SPENCER WATER SYSTEM	4245	02	CANEY FORK RIVER
VAN BUREN	0000655	SPENCER WATER SYSTEM	4245	03	WARREN CO UD
VAN BUREN	0000655	SPENCER WATER SYSTEM	4245	01	LAUREL LAKE
WARREN	0000423	MCMINNVILLE WATER DEPARTMENT	15420	03	WEST WARREN VIOLA
WARREN	0000423	MCMINNVILLE WATER DEPARTMENT	15420	02	WARREN CO UD
WARREN	0000423	MCMINNVILLE WATER DEPARTMENT	15420	01	BARREN FORK RIVER

Appendix A

COUNTY	WATER SYSTEM ID.	COMMUNITY WATER SYSTEM	POPULATION	PARENT SYSTEM SOURCE #	WATER SOURCE
WARREN	0000818	WARREN COUNTY UTILITY DISTRICT	17990	03	CAGLE-FREDONIA
WARREN	0000818	WARREN COUNTY UTILITY DISTRICT	17990	01	COLLINS RIVER
WARREN	0000818	WARREN COUNTY UTILITY DISTRICT	17990	02	MCMINNVILLE
WARREN	0000742	WEST WARREN-VIOLA UTILITY DISTRICT	9293	01	BARREN FORK RIVER
WARREN	0000742	WEST WARREN-VIOLA UTILITY DISTRICT	9293	02	MCMINNVILLE
WARREN	0000742	WEST WARREN-VIOLA UTILITY DISTRICT	9293	03	WOODBURY
WARREN	0000742	WEST WARREN-VIOLA UTILITY DISTRICT	9293	04	WARREN CO UD
WASHINGTON	0000331	JOHNSON CITY WATER DEPARTMENT	83714	02	WATAGUA RIVER
WASHINGTON	0000331	JOHNSON CITY WATER DEPARTMENT	83714	01	SPRING
WASHINGTON	0000338	JONESBOROUGH WATER DEPARTMENT	20580	01	NOLICHUCKY RIVER
WASHINGTON	0000338	JONESBOROUGH WATER DEPARTMENT	20580	02	JOHNSON CITY WD
WAYNE	0000119	CLIFTON WATER DEPARTMENT	2963	01	TENNESSEE RIVER
WAYNE	0000127	COLLINWOOD WATER DEPARTMENT	2109	01	WELL & SPRINGS
WAYNE	0000736	WAYNESBORO WATER SYSTEM	3765	01	GREEN RIVER
WAYNE	0000934	WEST LAUDERDALE WATE AUTHORITY	94	01	FLORENCE, AL
WEAKLEY	0000196	DRESDEN WATER DEPARTMENT	3653	01	WELLS
WEAKLEY	0000265	GLEASON WATER DEPARTMENT	1709	01	WELLS
WEAKLEY	0000276	GREENFIELD WATER DEPARTMENT	2380	01	2 WELLS
WEAKLEY	0000435	MARTIN WATER DEPARTMENT	11703	01	WELLS
WEAKLEY	0000627	SHARON WATER SYSTEM	1273	01	WELLS
WHITE	0000653	BON DE CROFT UTILITY DISTRICT	2714	01	BILLY'S BRANCH
WHITE	0000653	BON DE CROFT UTILITY DISTRICT	2714	02	WEST CUMBERLAND
WHITE	0000190	DEWHITE UTILITY DISTRICT	5176	01	SPARTA
WHITE	0000526	OCONNOR UTILITY DISTRICT	6258	01	SPARTA
WHITE	0000836	PRICES SWITCH WATER COMPANY	180	01	BON DE CROFT UD

Appendix A

COUNTY	WATER SYSTEM ID.	COMMUNITY WATER SYSTEM	POPULATION	PARENT SYSTEM SOURCE #	WATER SOURCE
WHITE	0000569	QUEBECK WALLING UTILITY DISTRICT	3423	01	SPARTA
WHITE	0000652	SPARTA WATER SYSTEM	7904	01	CALFKILLER RIVER
WILLIAMSON	0008081	ALARA AT COOL SPRINGS APARTMENTS	1112	01	MALLORY VALLEY
WILLIAMSON	0008211	ALARA BROOK APARTMENTS	1096	01	MALLORY VALLEY
WILLIAMSON	0008096	ALARA FARMS APARTMENTS	1365	01	MALLORY VALLEY
WILLIAMSON	0000069	BRENTWOOD WATER DEPARTMENT	19751	02	NASHVILLE
WILLIAMSON	0000069	BRENTWOOD WATER DEPARTMENT	19751	01	HARPETH VALLEY
WILLIAMSON	0008041	CARRINGTON HILLS APARTMENTS	1037	01	FRANKLIN
WILLIAMSON	0000236	FAIRVIEW WATER SYSTEM	6899	01	HARPETH VALLEY
WILLIAMSON	0000236	FAIRVIEW WATER SYSTEM	6899	02	WATER AUTHORITY OF DICKSON COUNTY
WILLIAMSON	0008080	FRANKLIN ESTATES MOBILE HOME COMMUNITY	740	01	FRANKLIN
WILLIAMSON	0008192	FRANKLIN OAKS APARTMENTS	1315	01	FRANKLIN
WILLIAMSON	0000246	FRANKLIN WATER DEPARTMENT	41532	03	MILCROFTON
WILLIAMSON	0000246	FRANKLIN WATER DEPARTMENT	41532	01	HARPETH RIVER
WILLIAMSON	0000246	FRANKLIN WATER DEPARTMENT	41532	02	HARPETH VALLEY
WILLIAMSON	0000699	H.B. & T.S. UTILITY DISTRICT	12214	01	SPRING HILL U D
WILLIAMSON	0000699	H.B. & T.S. UTILITY DISTRICT	12214	02	HARPETH VALLEY
WILLIAMSON	0000699	H.B. & T.S. UTILITY DISTRICT	12214	03	FRANKLIN
WILLIAMSON	0000699	H.B. & T.S. UTILITY DISTRICT	12214	04	MILCROFTON
WILLIAMSON	0008145	LANDING AT BRENTWOOD, THE	2085	01	MALLORY VALLEY
WILLIAMSON	0000428	MALLORY VALLEY UTILITY DISTRICT	9414	01	FRANKLIN
WILLIAMSON	0000428	MALLORY VALLEY UTILITY DISTRICT	9414	02	HARPETH VALLEY
WILLIAMSON	0000428	MALLORY VALLEY UTILITY DISTRICT	9414	03	MILCROFTON

Appendix A

COUNTY	WATER SYSTEM ID.	COMMUNITY WATER SYSTEM	POPULATION	PARENT SYSTEM SOURCE #	WATER SOURCE
WILLIAMSON	0000247	MILCROFTON UTILITY DISTRICT	9102	01	HARPETH VALLEY
WILLIAMSON	0000247	MILCROFTON UTILITY DISTRICT	9102	02	NOLENSVILLE
WILLIAMSON	0000247	MILCROFTON UTILITY DISTRICT	9102	03	FRANKLIN
WILLIAMSON	0000247	MILCROFTON UTILITY DISTRICT	9102	04	MALLORY VALLEY
WILLIAMSON	0000247	MILCROFTON UTILITY DISTRICT	9102	05	H.B. & T.S. U.D.
WILLIAMSON	0000511	NOLENSVILLE-COLLEGE GROVE UTILITY DISTRICT	9633	01	WELLS
WILLIAMSON	0000511	NOLENSVILLE-COLLEGE GROVE UTILITY DISTRICT	9633	02	NASHVILLE
WILLIAMSON	0000511	NOLENSVILLE-COLLEGE GROVE UTILITY DISTRICT	9633	03	SMYRNA
WILLIAMSON	0000511	NOLENSVILLE-COLLEGE GROVE UTILITY DISTRICT	9633	04	MILCROFTON
WILLIAMSON	0008087	WYNDCHASE AT ASPEN GROVE APARTMENTS	1574	01	MALLORY VALLEY
WILSON	0000264	GLADEVILLE UTILITY DISTRICT #1	10189	01	WELLS
WILSON	0000264	GLADEVILLE UTILITY DISTRICT #1	10189	02	W. WILSON U.D.
WILSON	0000264	GLADEVILLE UTILITY DISTRICT #1	10189	03	CUMBERLAND U.D.
WILSON	0000264	GLADEVILLE UTILITY DISTRICT #1	10189	04	LEBANON
WILSON	0000941	GLADEVILLE UTILITY DISTRICT #2	2232	01	LEBANON
WILSON	0000394	LAGUARDO UTILITY DISTRICT	5524	01	LEBANON
WILSON	0000394	LAGUARDO UTILITY DISTRICT	5524	02	WEST WILSON U.D.
WILSON	0000393	LEBANON WATER SYSTEM	23483	01	CUMBERLAND RIVER
WILSON	0000732	WATERTOWN WATER SYSTEM	1682	01	WELLS
WILSON	0000743	WEST WILSON UTILITY DISTRICT	35109	01	OLD HICKORY LAKE
WILSON	0000743	WEST WILSON UTILITY DISTRICT	35109	02	CUMBERLAND U.D.

Appendix A

COUNTY	WATER SYSTEM ID.	COMMUNITY WATER SYSTEM	POPULATION	PARENT SYSTEM SOURCE #	WATER SOURCE
WILSON	0000790	WILSON COUNTY WATER & WASTEWATER	13135	01	LEBANON
WILSON	0000790	WILSON COUNTY WATER & WASTEWATER	13135	02	GLADEVILLE
WILSON	0000790	WILSON COUNTY WATER & WASTEWATER	13135	03	CONSOLIDATED UD