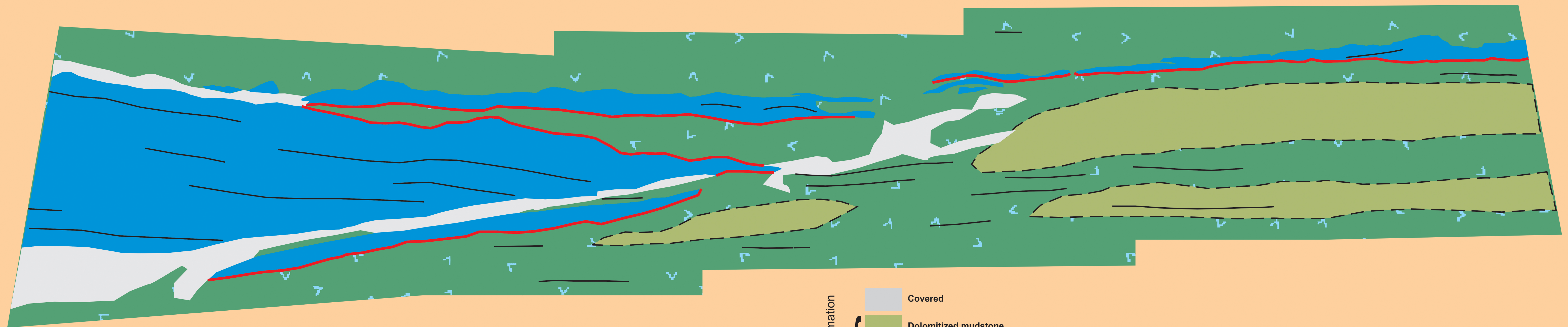




No Vertical Exaggeration

Meters



- Fort Payne Formation Facies
- Covered
 - Dolomitized mudstone
 - Crinoidal grainstone, planar laminated and bedded.
 - Siliciclastic mudstone with local concentrations of dispersed crinoid grains.
- ★ C Petrographic sample
 - Scour
 - Bedding

Section 1: detail 1
 East-facing roadcut
 TN 53, Celina North