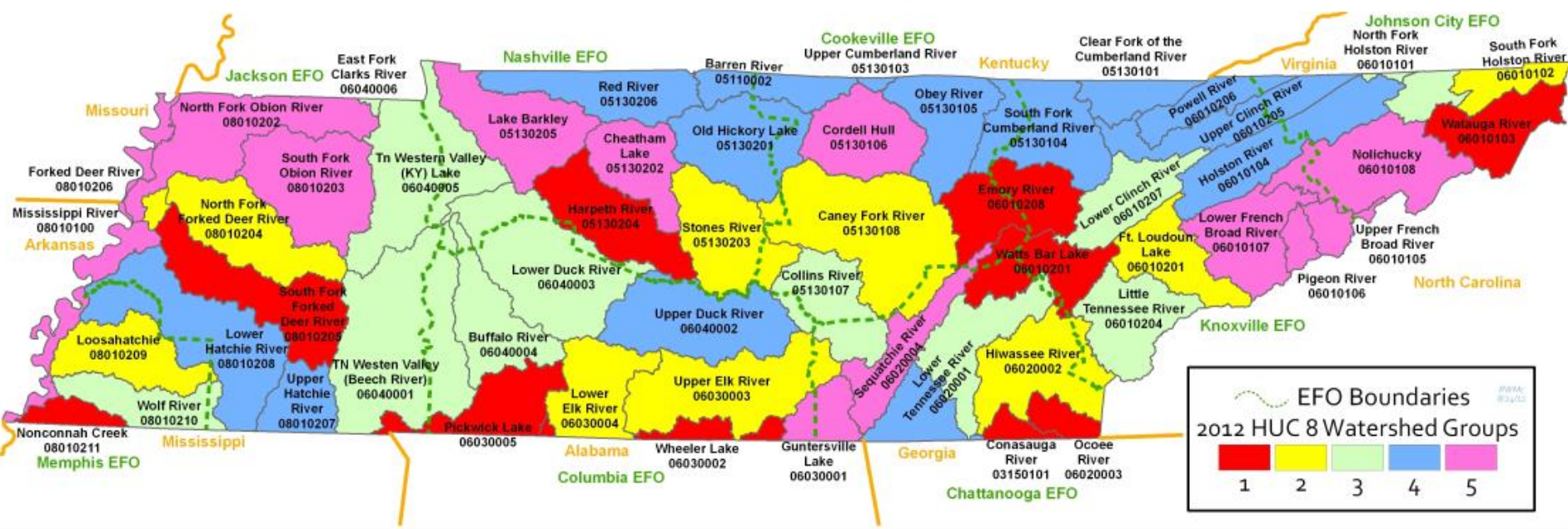


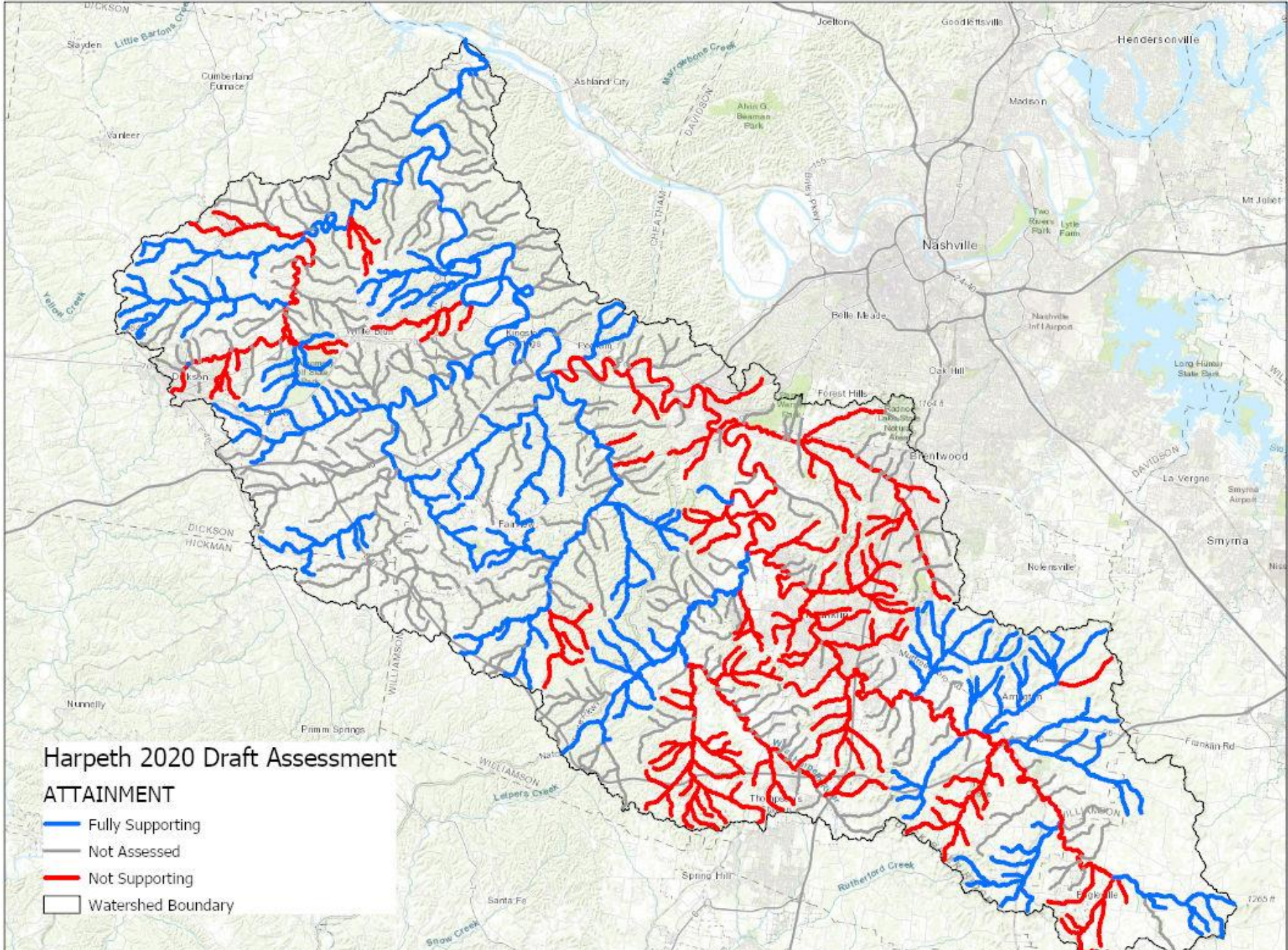
Harpeth River DRAFT Water Quality Assessment Overview

Tennessee Watershed Management Groups



EFO Boundaries
 2012 HUC 8 Watershed Groups

1 2 3 4 5



Harpeth 2020 Draft Assessment

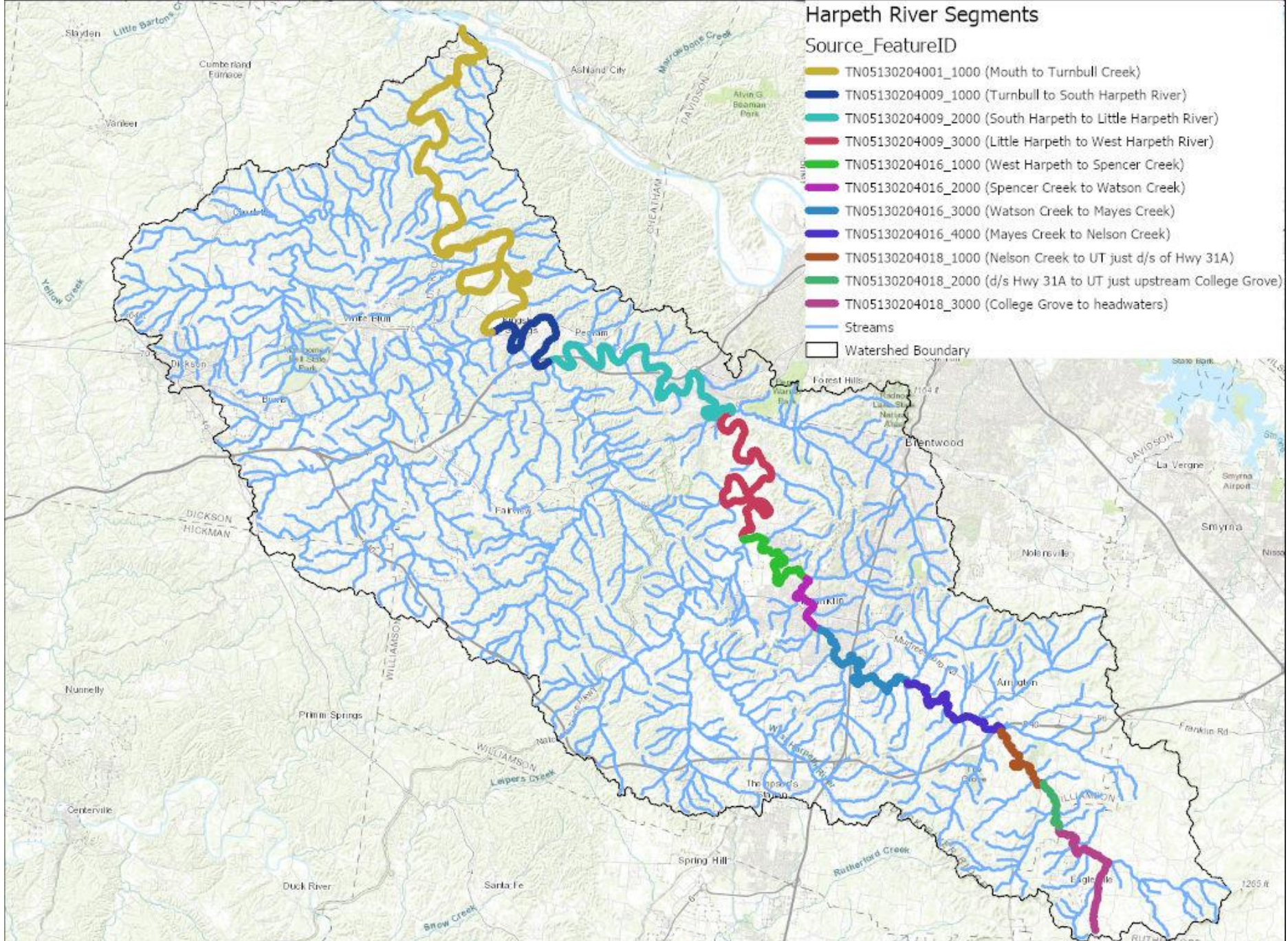
ATTAINMENT

- Fully Supporting
- Not Assessed
- Not Supporting
- Watershed Boundary

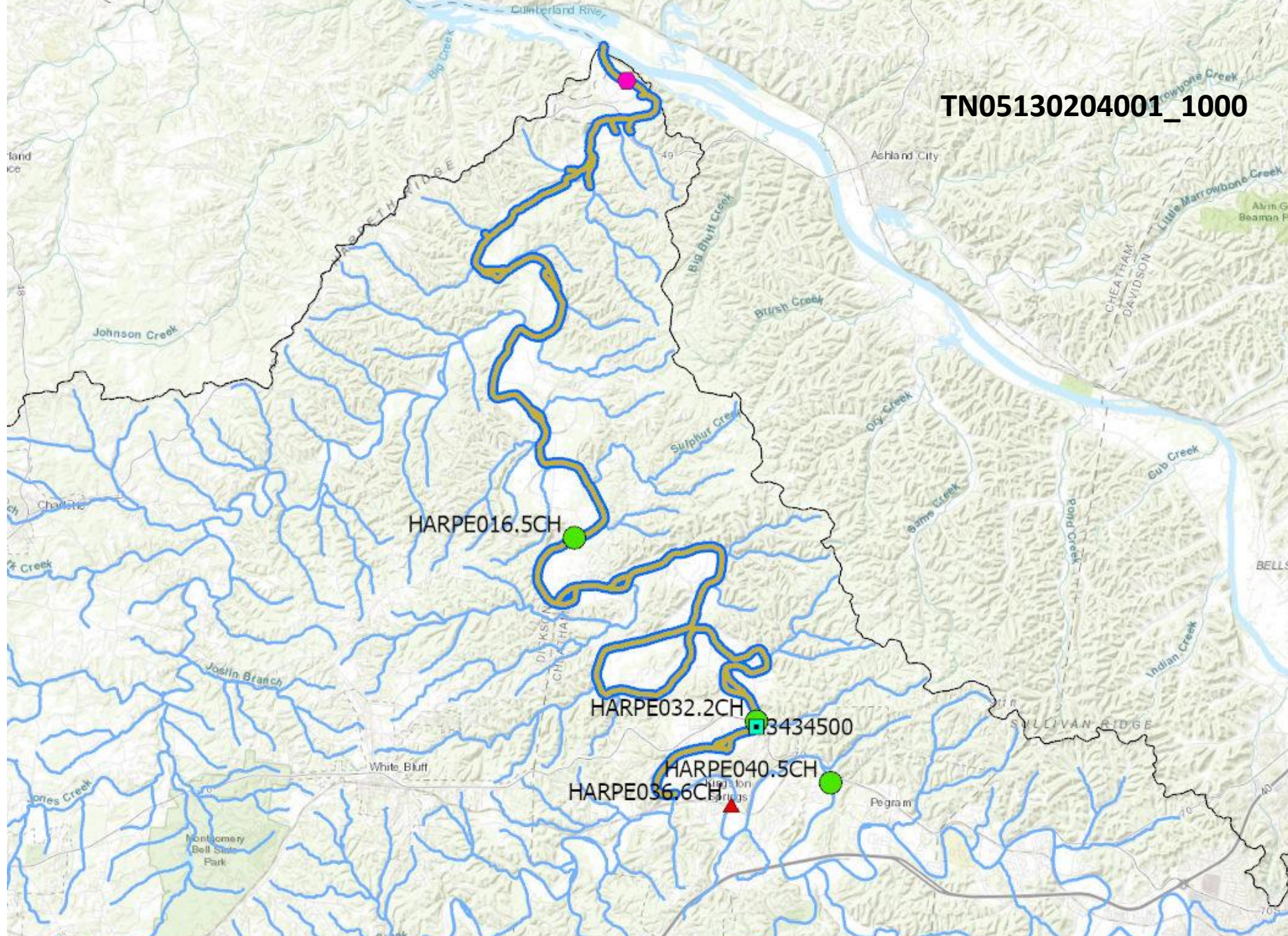
Harpeth River Segments

Source_FeatureID

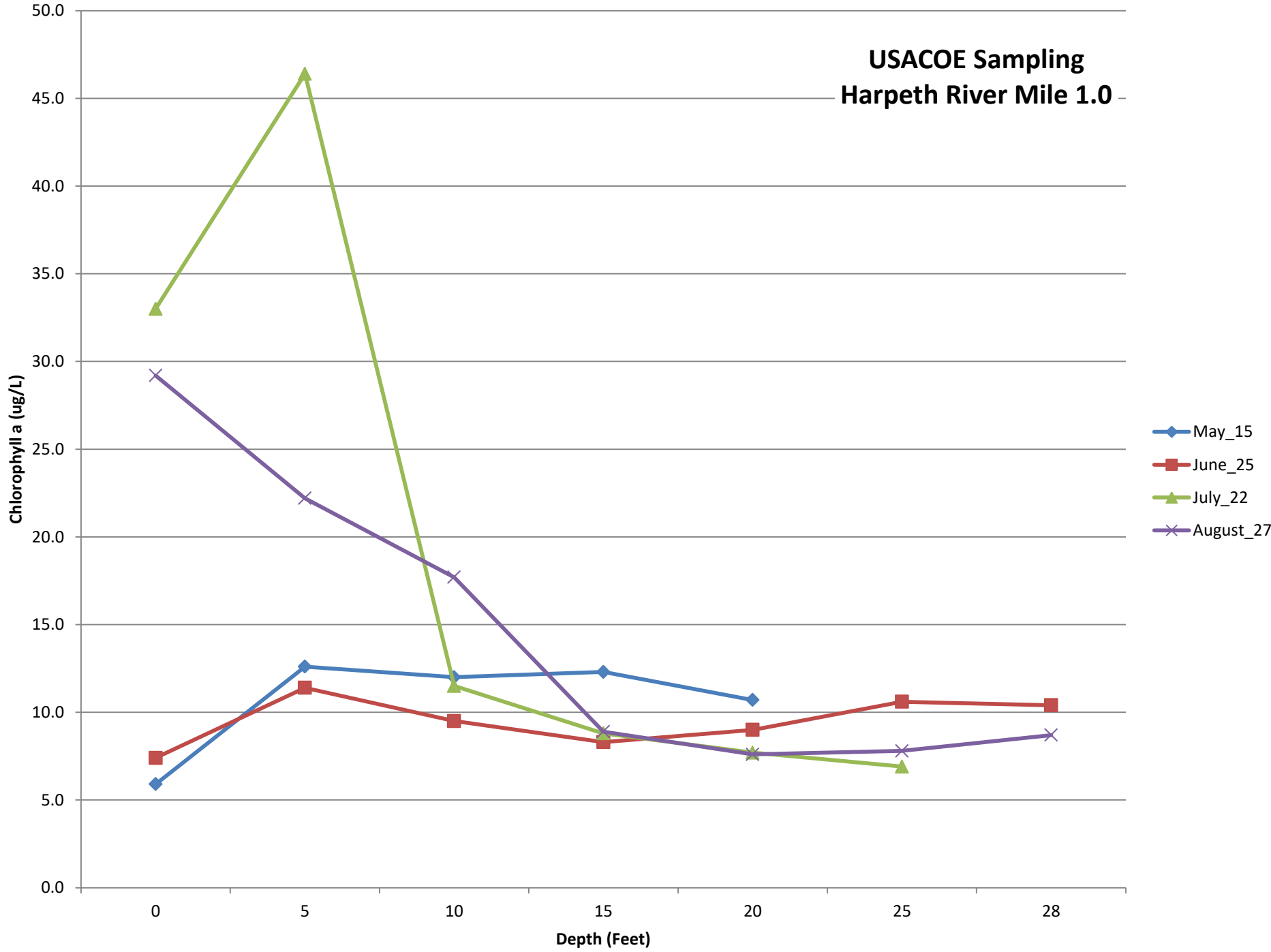
- TN05130204001_1000 (Mouth to Turnbull Creek)
- TN05130204009_1000 (Turnbull to South Harpeth River)
- TN05130204009_2000 (South Harpeth to Little Harpeth River)
- TN05130204009_3000 (Little Harpeth to West Harpeth River)
- TN05130204016_1000 (West Harpeth to Spencer Creek)
- TN05130204016_2000 (Spencer Creek to Watson Creek)
- TN05130204016_3000 (Watson Creek to Mayes Creek)
- TN05130204016_4000 (Mayes Creek to Nelson Creek)
- TN05130204018_1000 (Nelson Creek to UT just d/s Hwy 31A)
- TN05130204018_2000 (d/s Hwy 31A to UT just upstream College Grove)
- TN05130204018_3000 (College Grove to headwaters)
- Streams
- Watershed Boundary



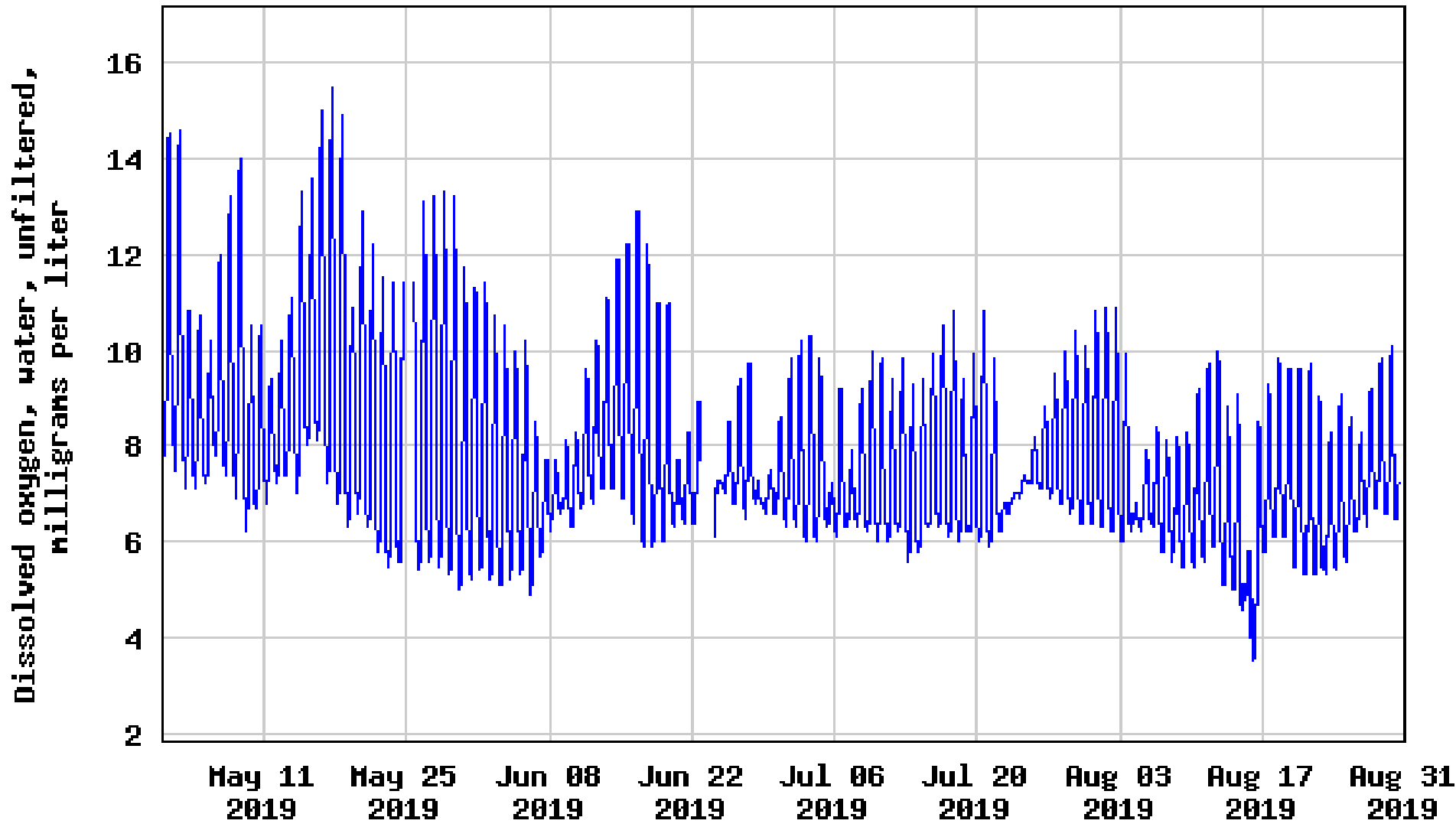
TN05130204001_1000



USACOE Sampling Harpeth River Mile 1.0

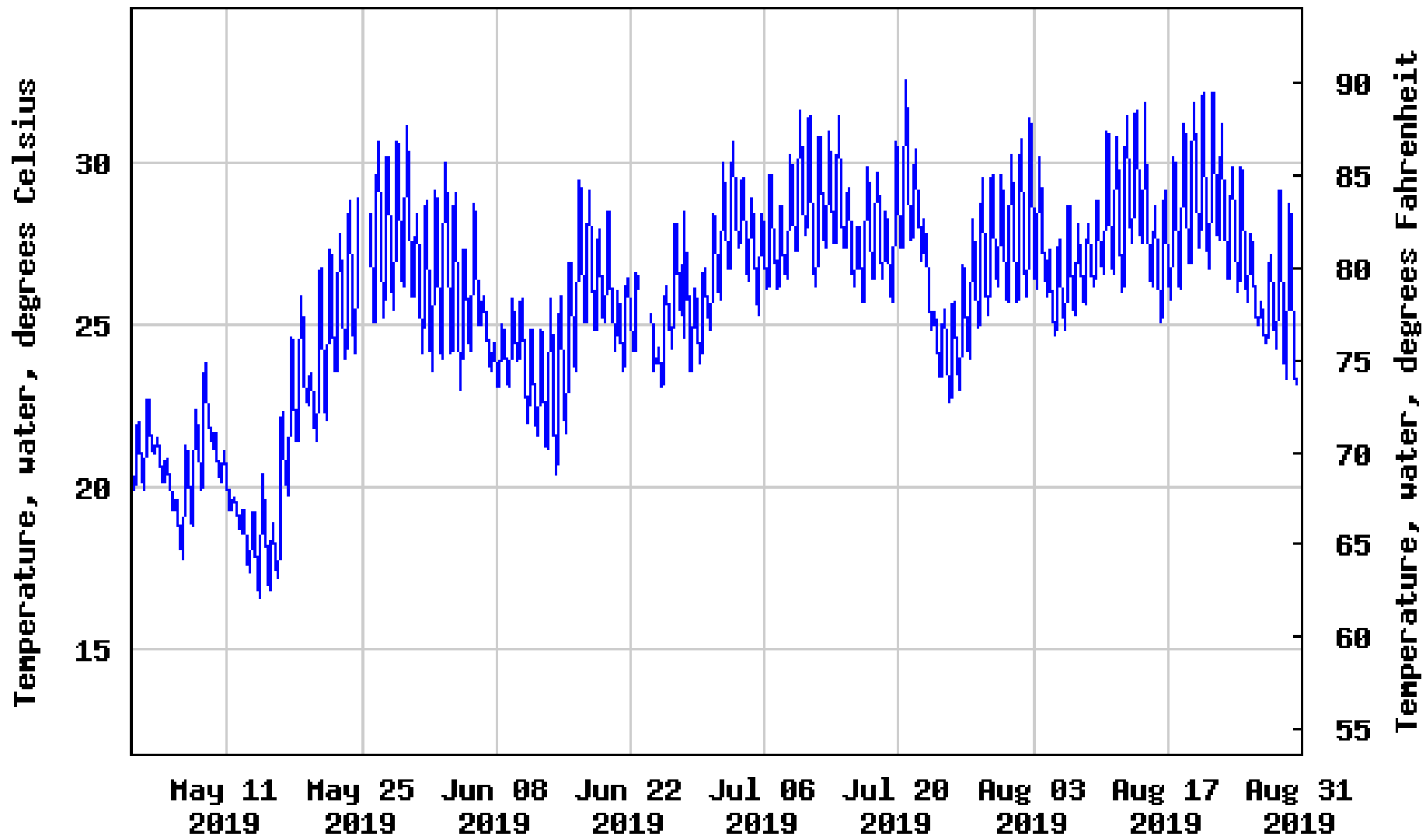


USGS 03434500 HARPETH RIVER NEAR KINGSTON SPRINGS, TN



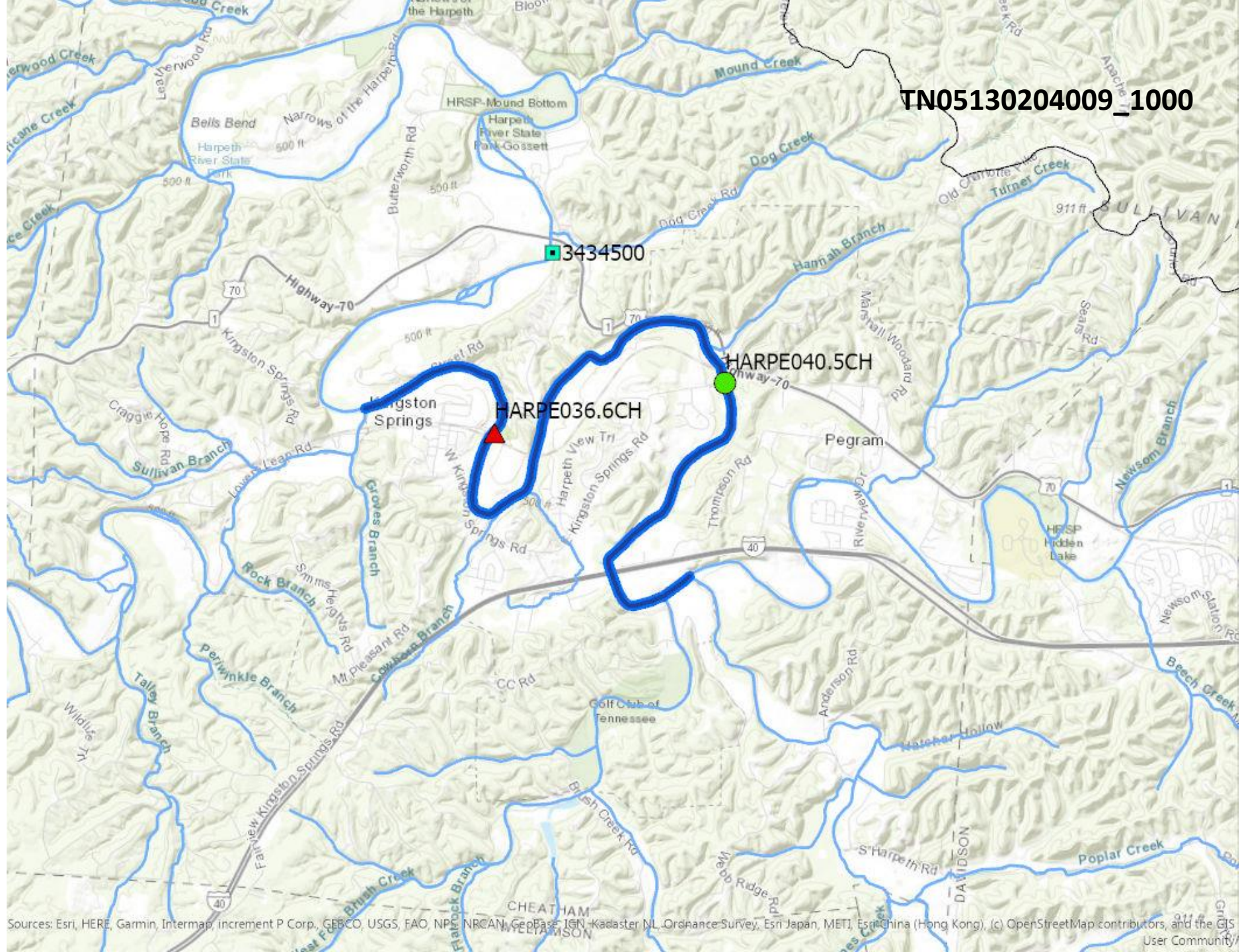
---- Provisional Data Subject to Revision ----

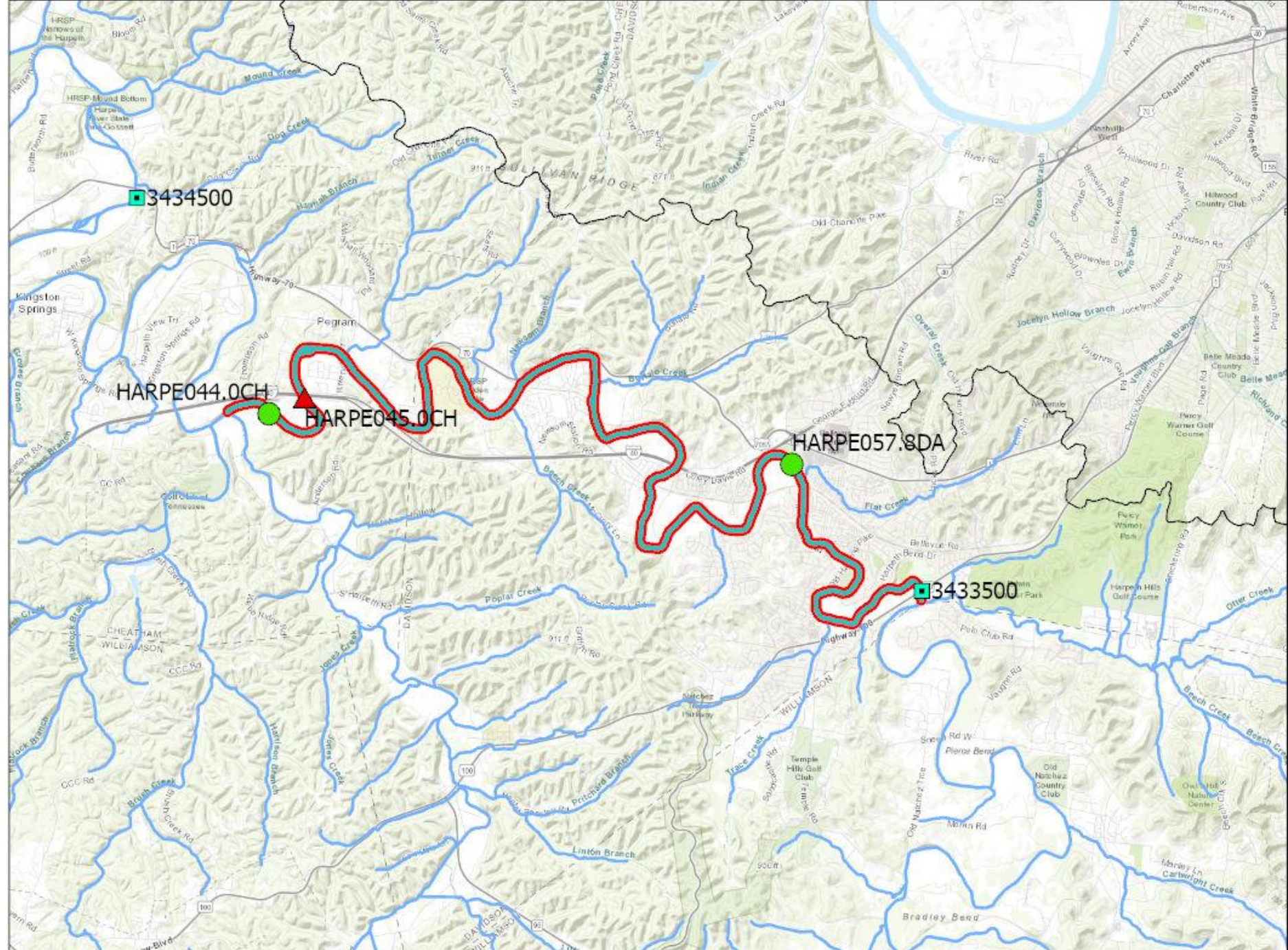
USGS 03434500 HARPETH RIVER NEAR KINGSTON SPRINGS, TN



---- Provisional Data Subject to Revision ----

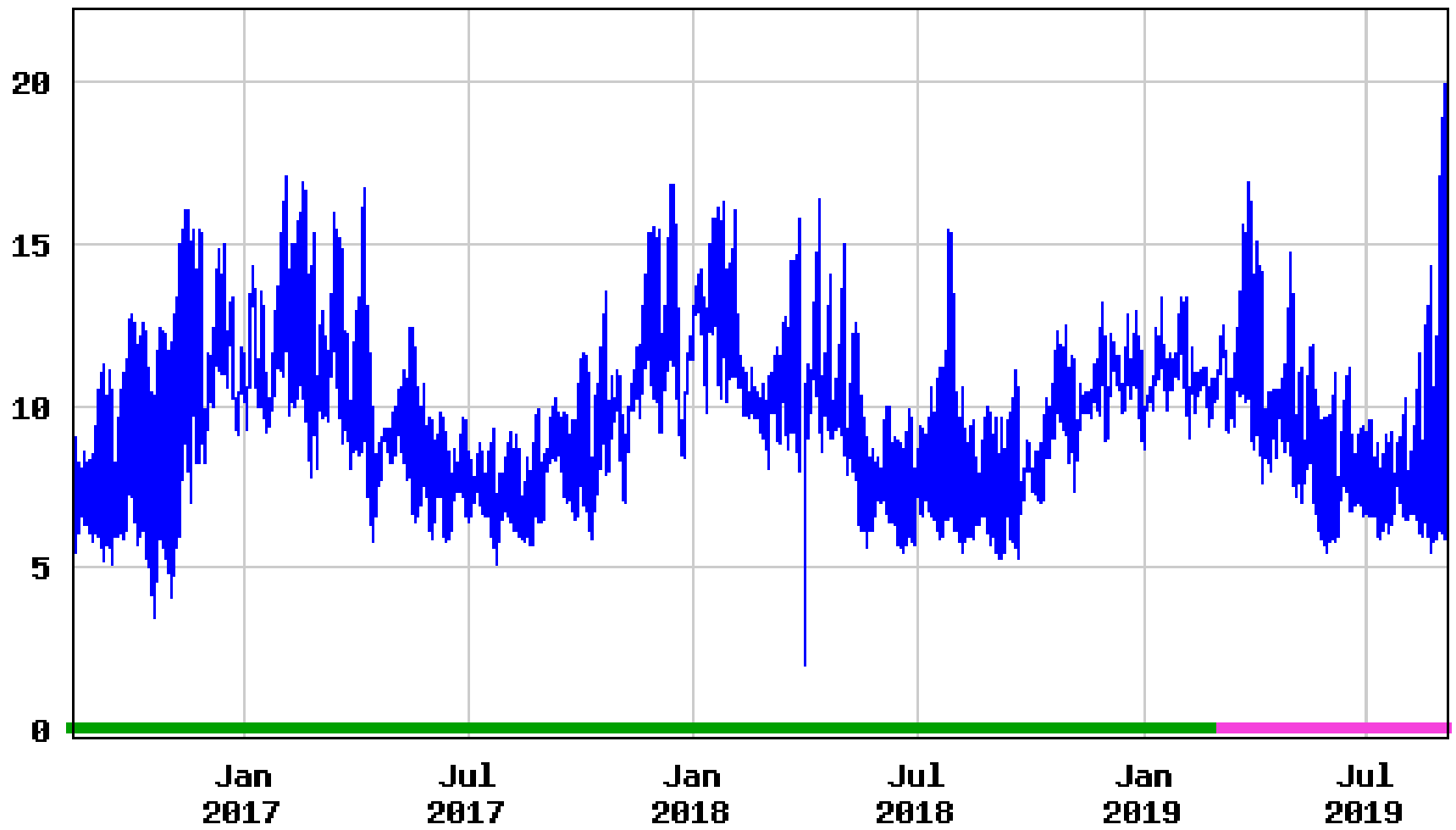
TN05130204009_1000





USGS 03433500 HARPETH RIVER AT BELLEVUE, TN

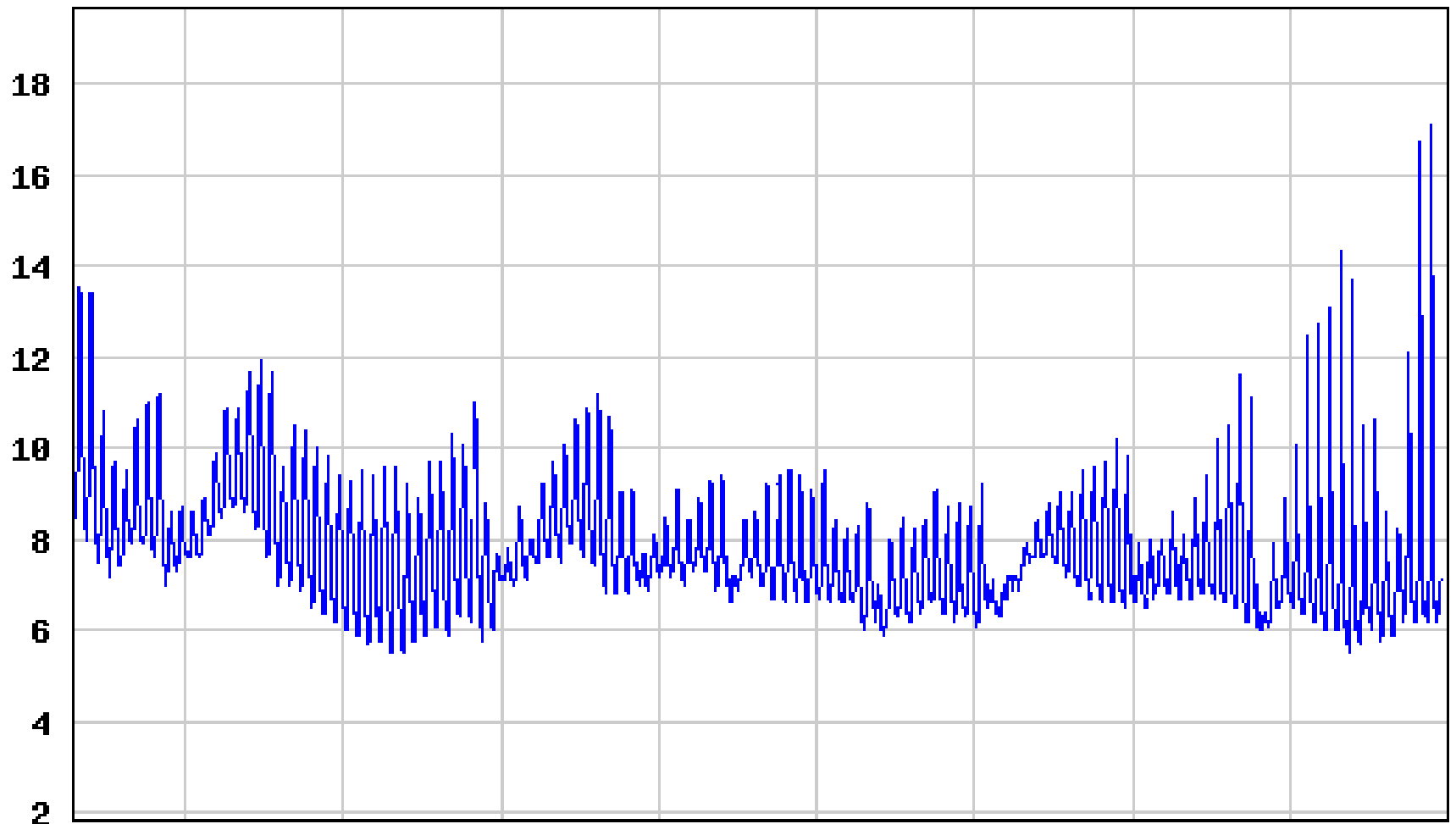
Dissolved oxygen, water, unfiltered, milligrams per liter



- Dissolved oxygen
- Period of approved data
- Period of provisional data

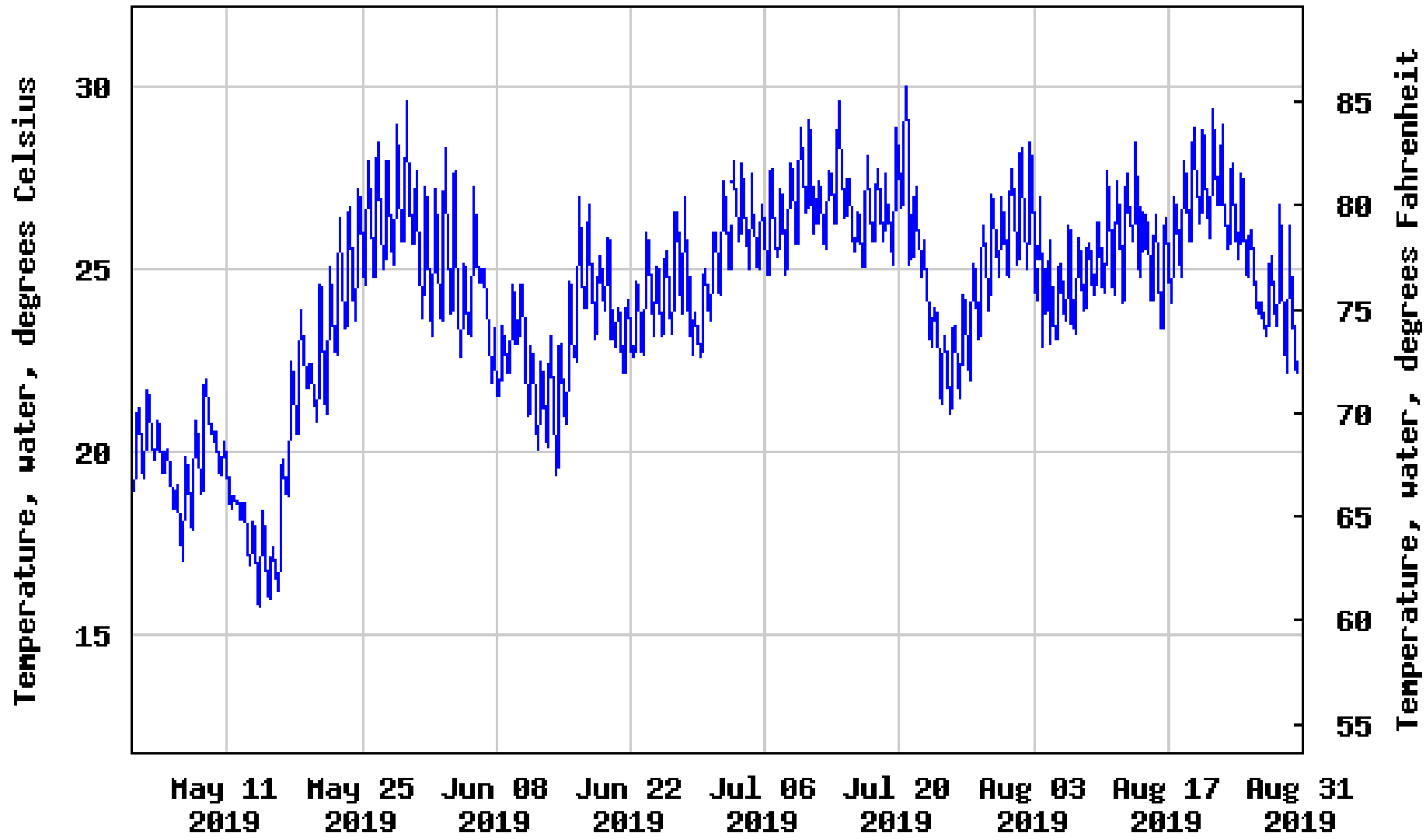
USGS 03433500 HARPETH RIVER AT BELLEVUE, TN

Dissolved oxygen, water, unfiltered,
milligrams per liter



---- Provisional Data Subject to Revision ----

USGS 03433500 HARPETH RIVER AT BELLEVUE, TN



---- Provisional Data Subject to Revision ----

TN05130204009_3000

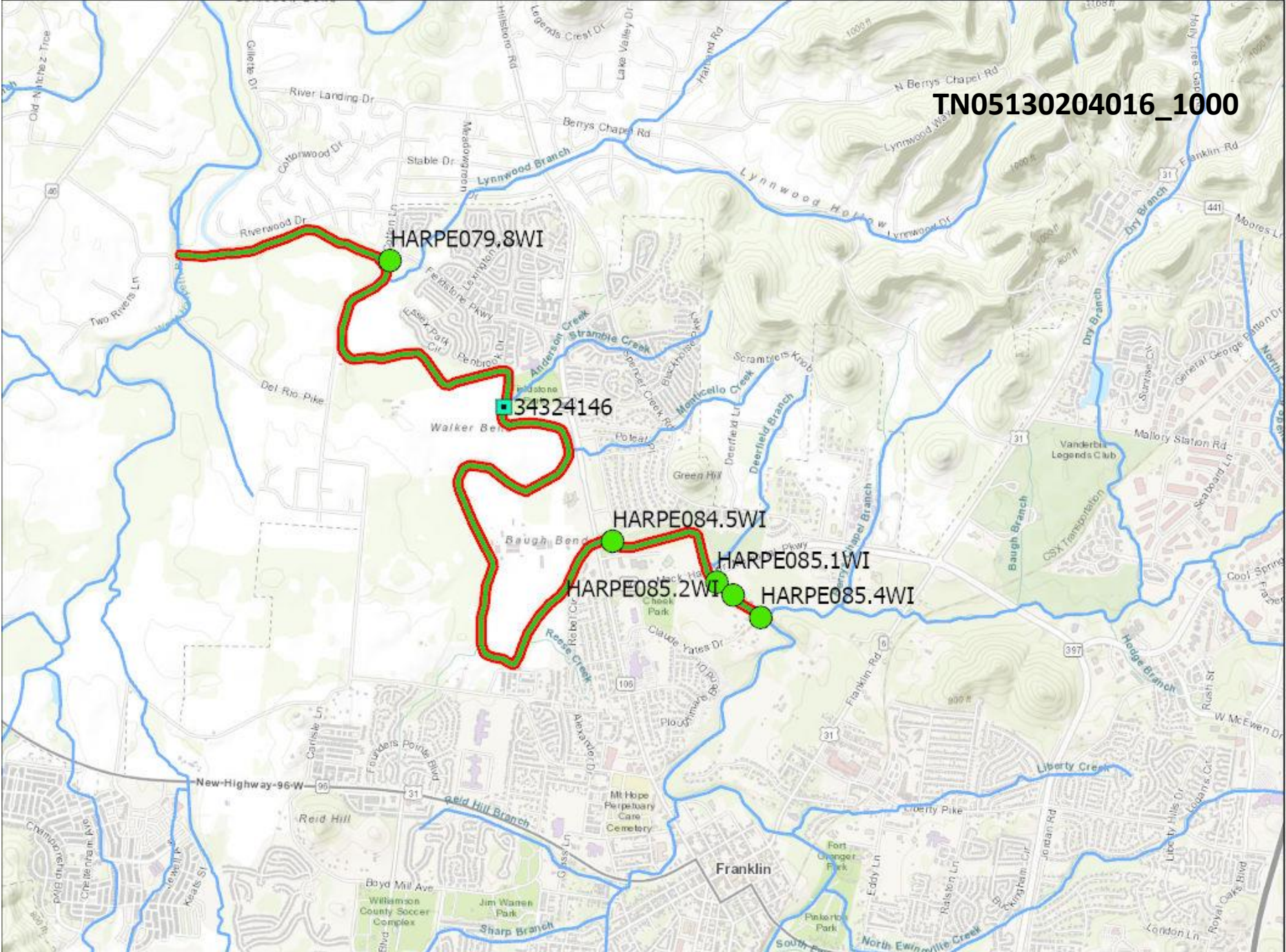
HARPE062.0DA
3433500

HARPE065.6WI

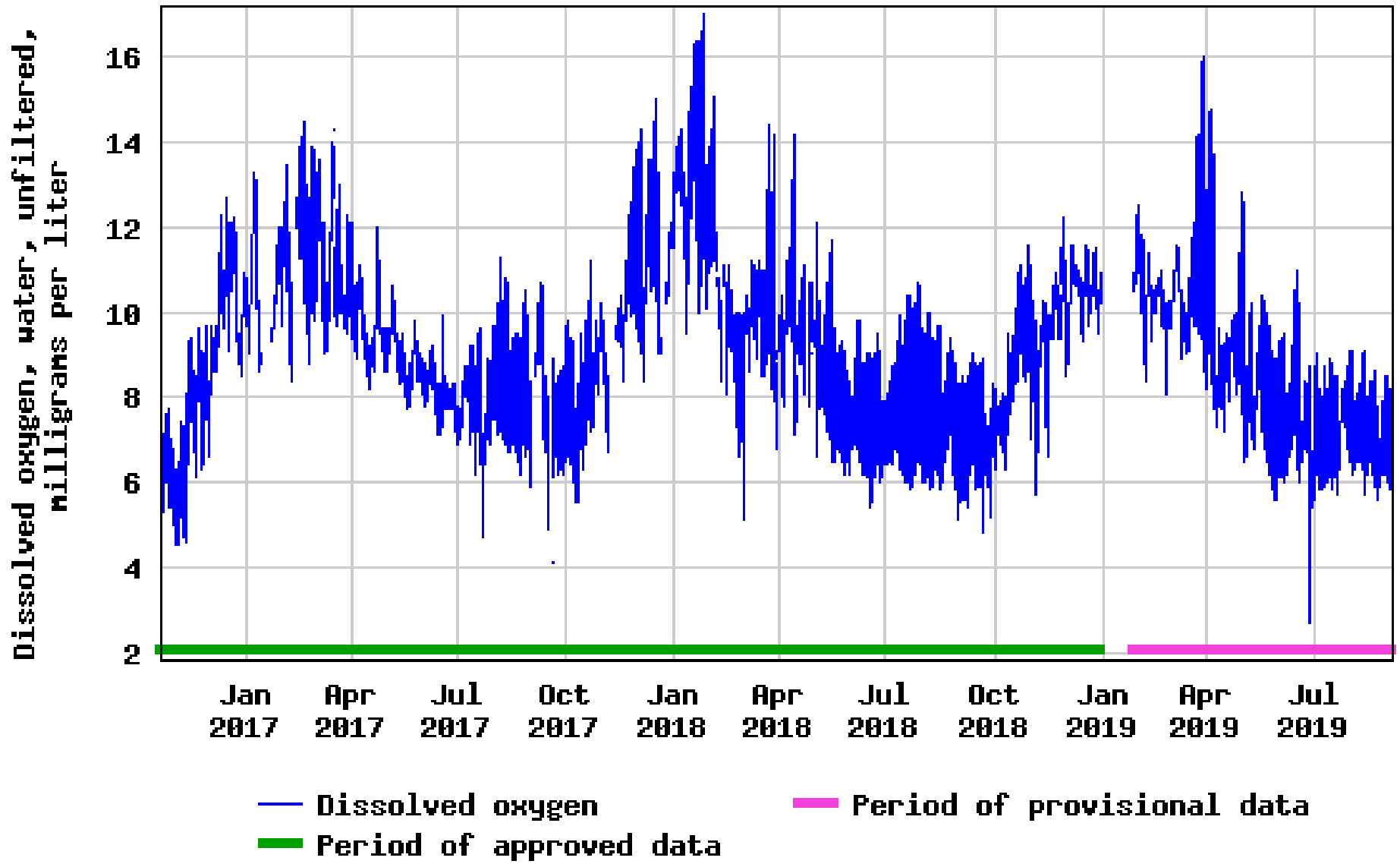
HARPE072.4WI

34324146

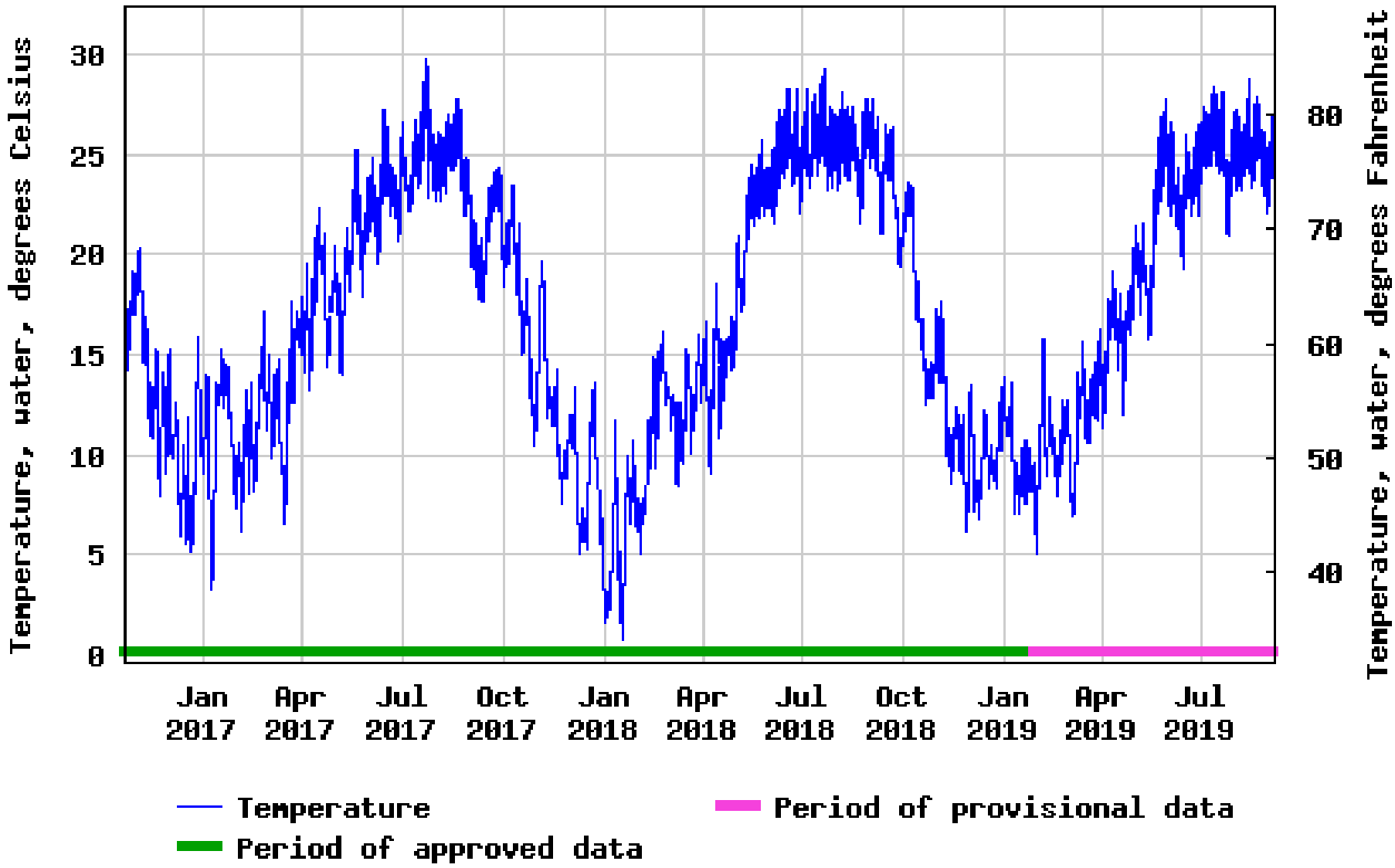
TN05130204016_1000



USGS 034324146 HARPETH RIVER AT MILE 81.33 NR BERRYS CHAPEL, TN

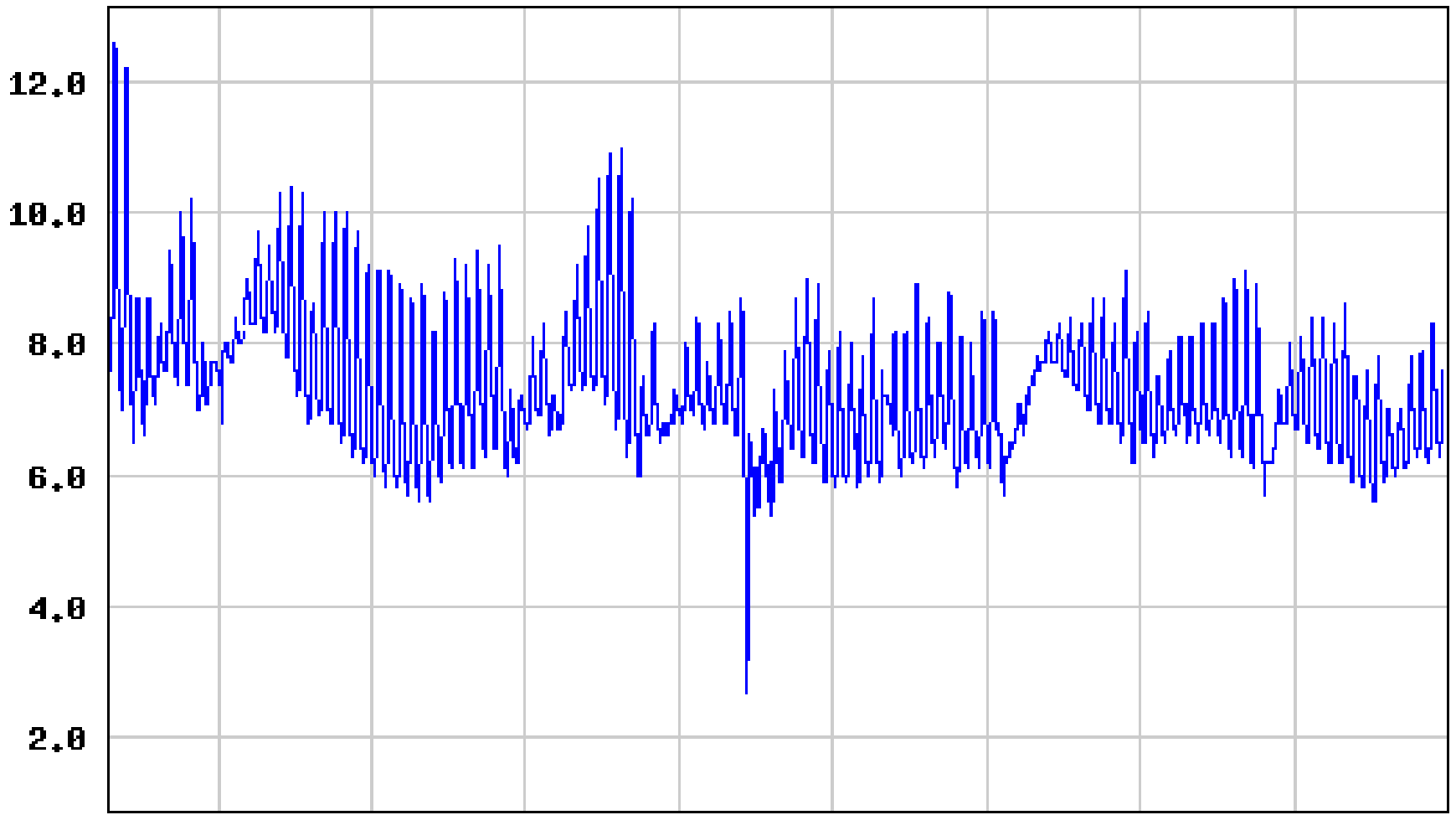


USGS 034324146 HARPETH RIVER AT MILE 81.33 NR BERRYS CHAPEL, TN



USGS 034324146 HARPETH RIVER AT MILE 81.33 NR BERRYS CHAPEL, TN

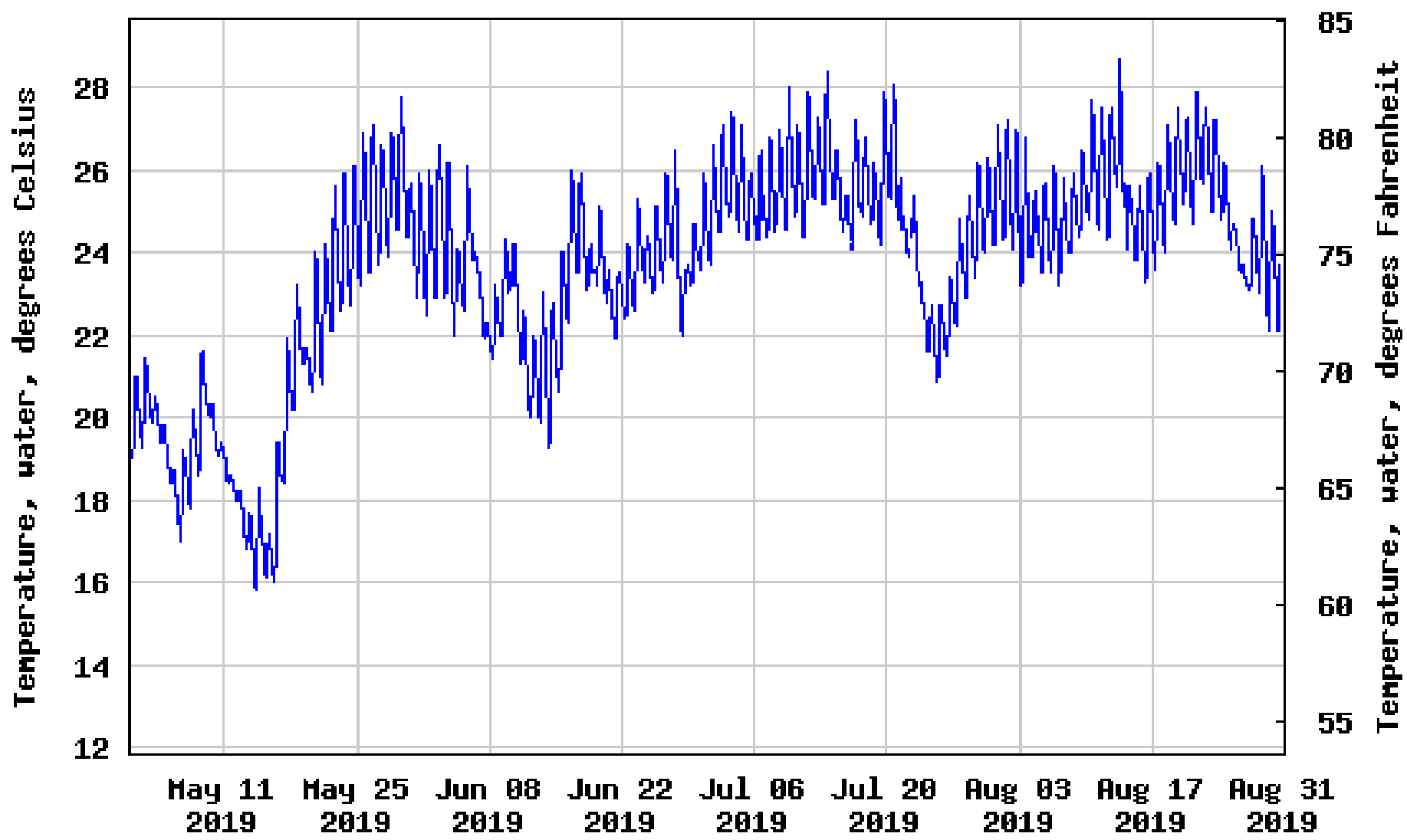
Dissolved oxygen, water, unfiltered,
milligrams per liter



May 11 2019 May 25 2019 Jun 08 2019 Jun 22 2019 Jul 06 2019 Jul 20 2019 Aug 03 2019 Aug 17 2019 Aug 31 2019

---- Provisional Data Subject to Revision ----

USGS 034324146 HARPETH RIVER AT MILE 81.33 NR BERRYS CHAPEL, TN



---- Provisional Data Subject to Revision ----

TN05130204016_2000

34324146

HARPE085.4WI

HARPE089.1WI

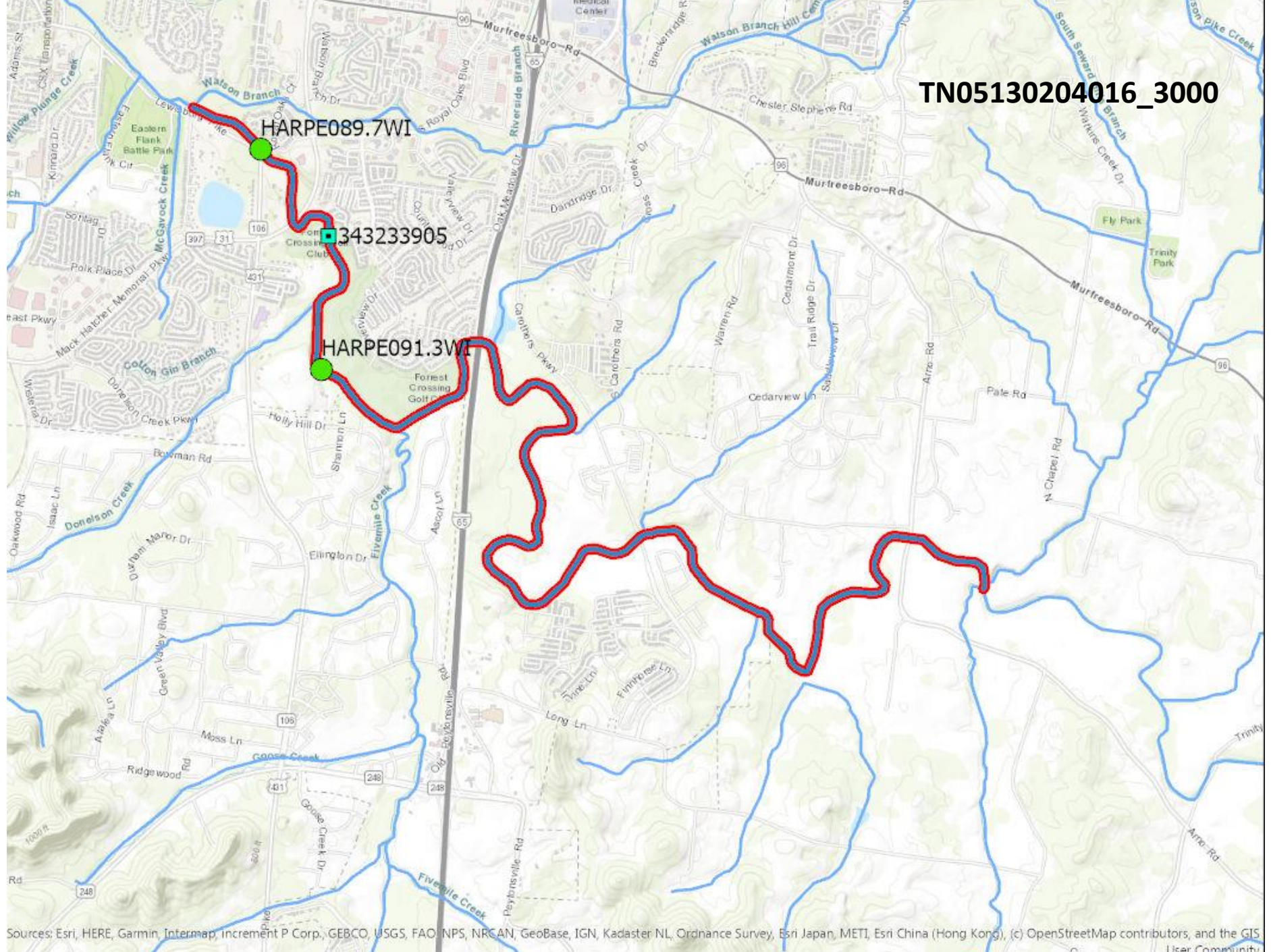
343233905

TN05130204016_3000

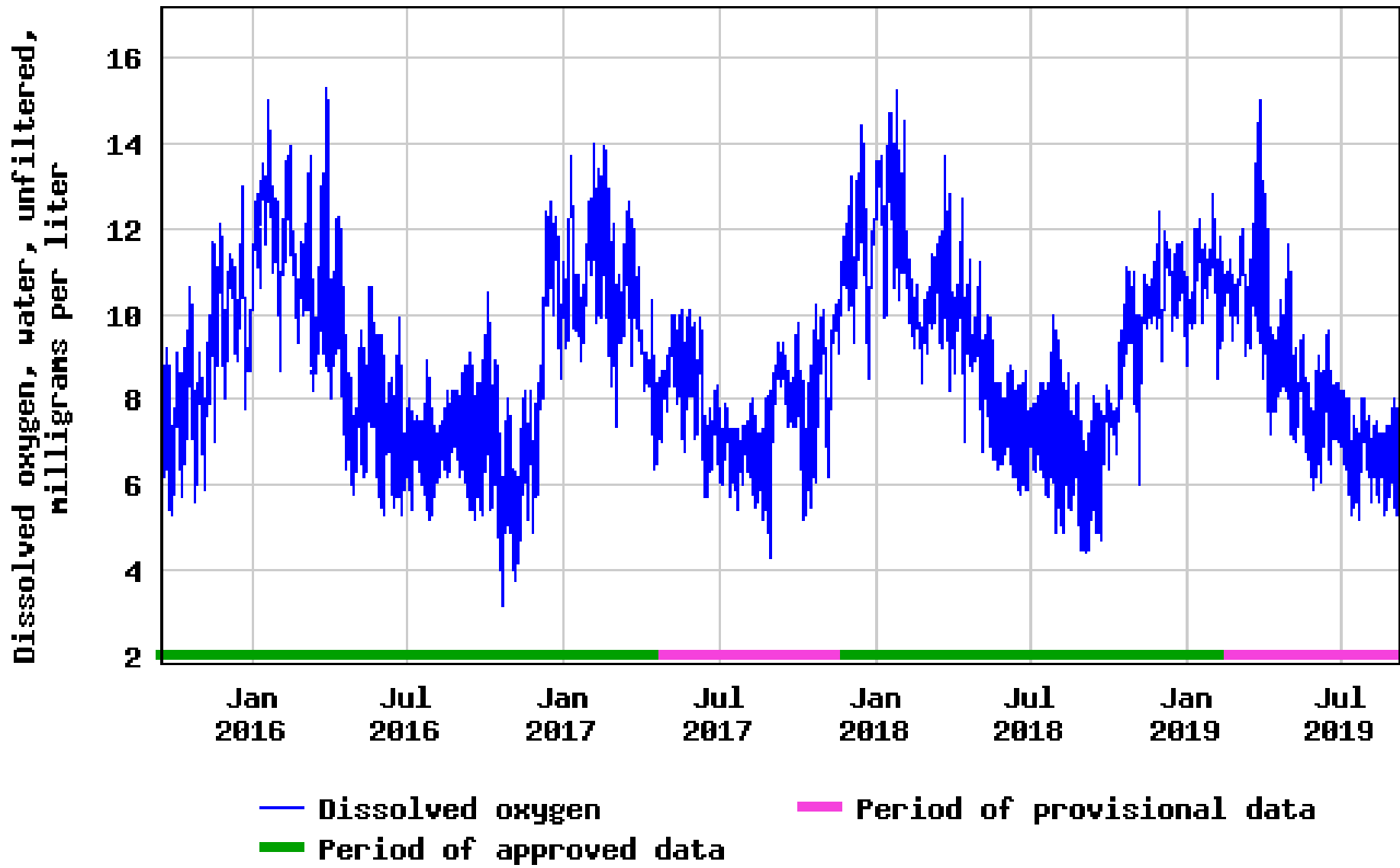
HARPE089.7WI

343233905

HARPE091.3WI



USGS 0343233905 HARPETH RIVER AT MILE 90.5 NEAR FRANKLIN, TN



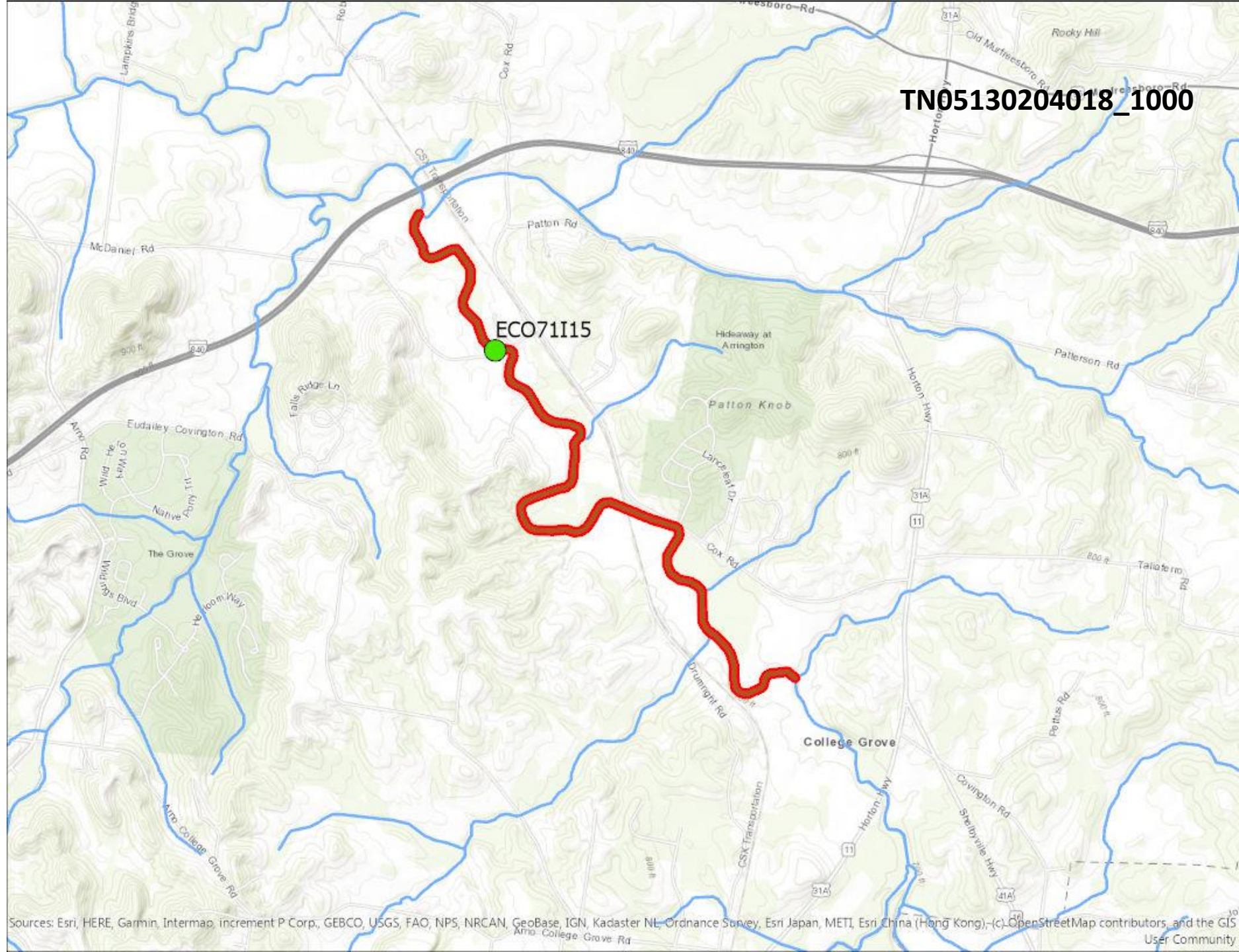
TN05130204016_4000

HARPE100.LWI

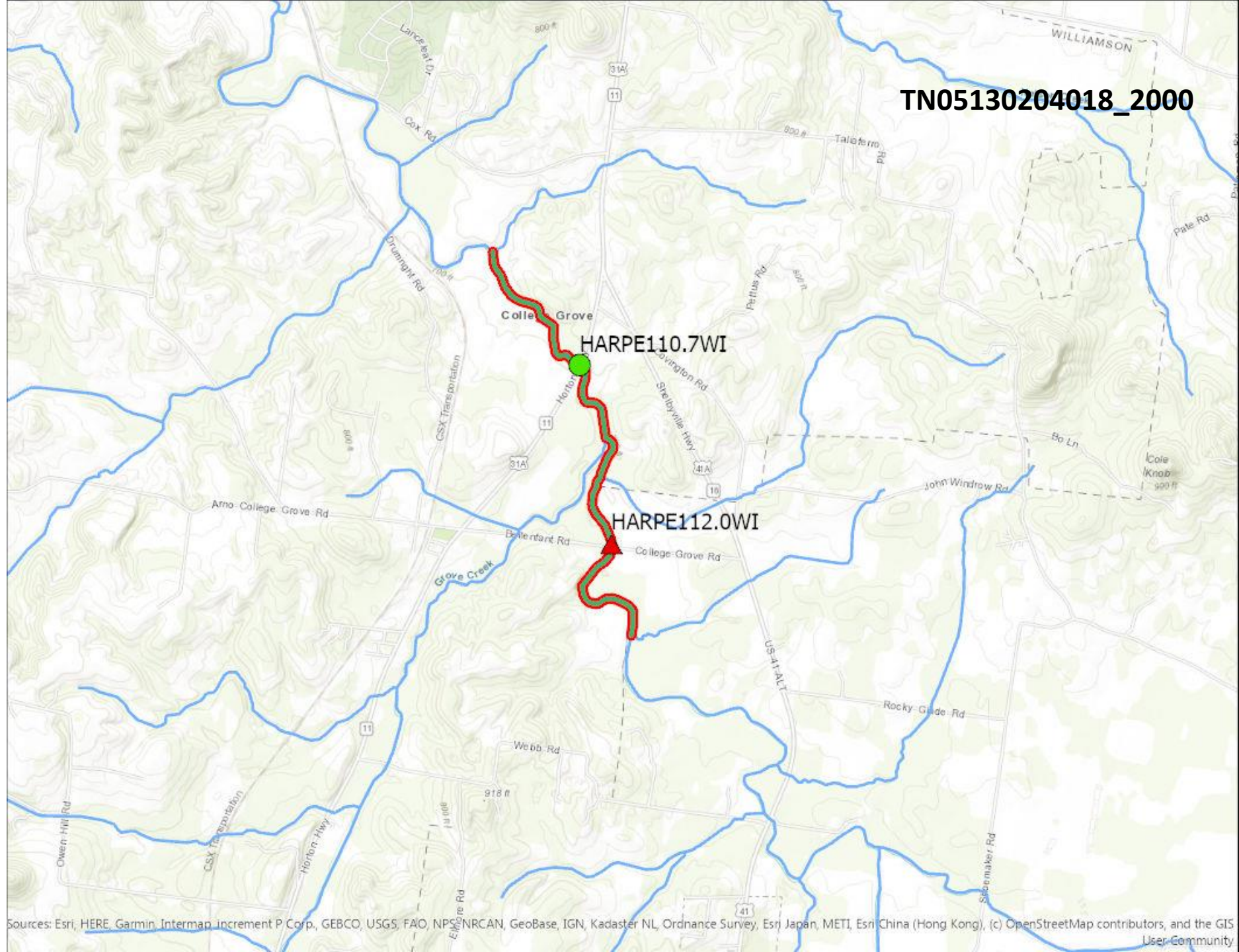


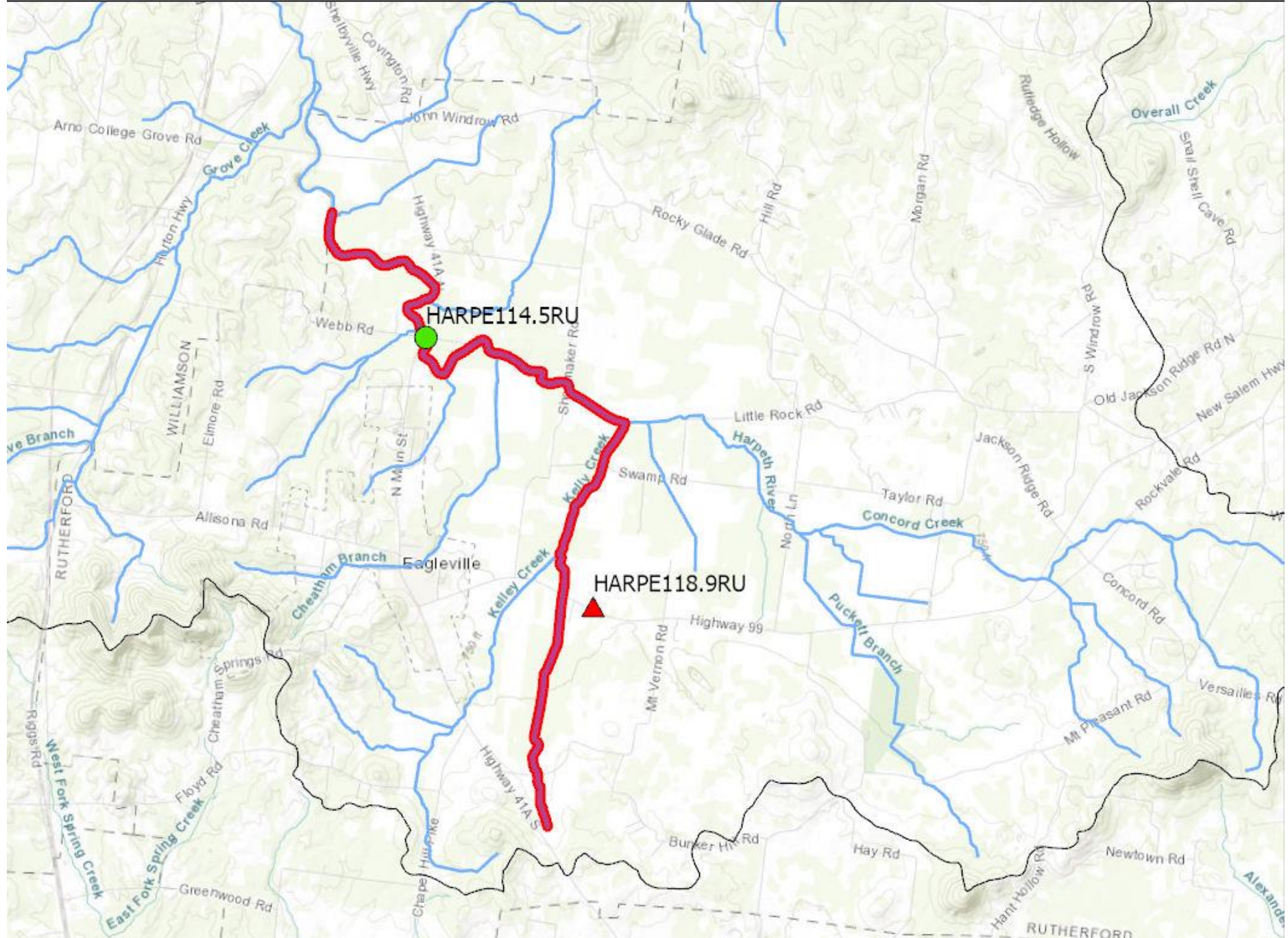
TN05130204018_1000

ECO71I15

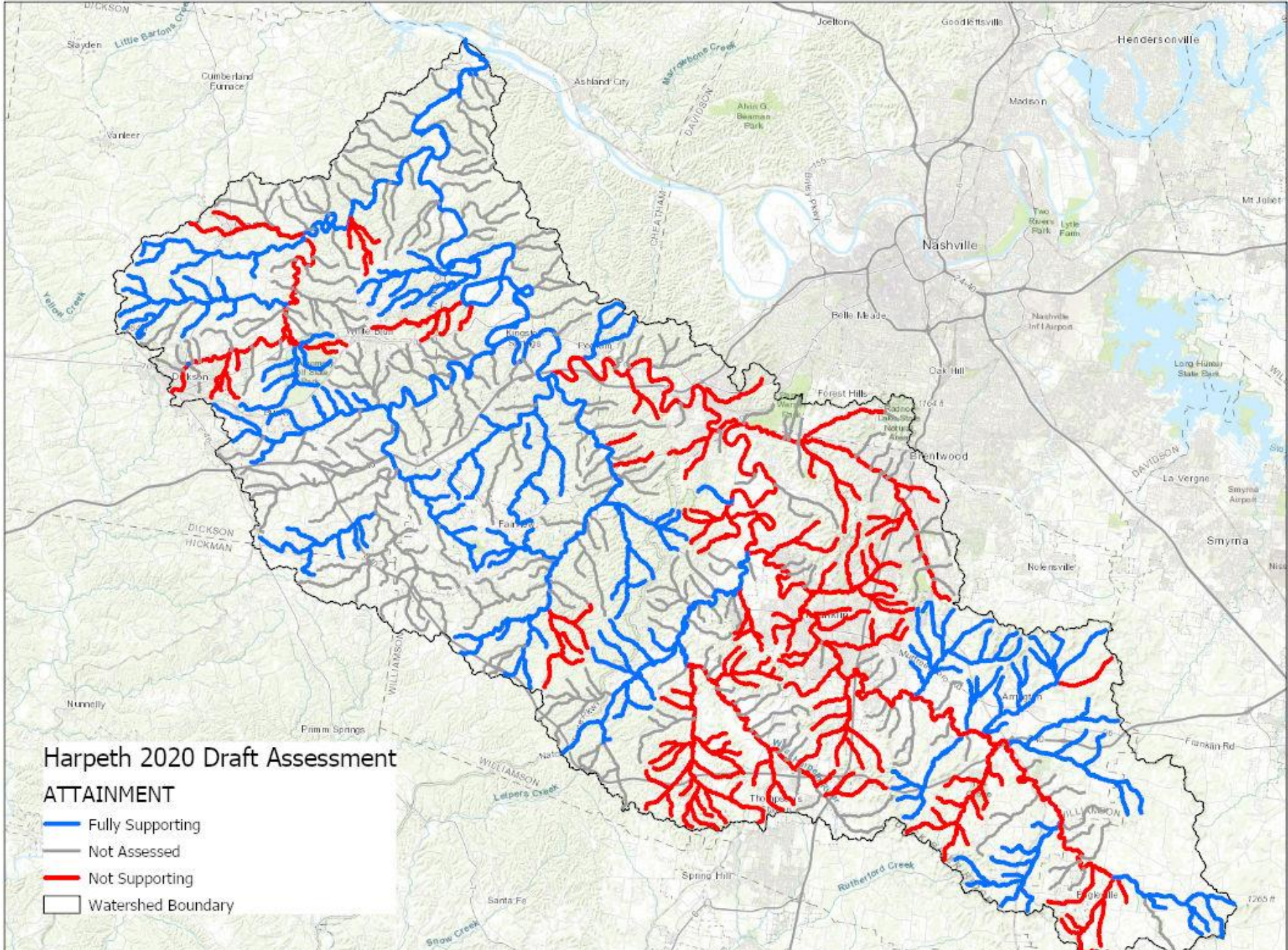


TN05130204018_2000





Sources: Esri, HERE, Garmin, Intermap, increment P Corp., GEBCO, USGS, FAO, NPS, NRCAN, GeoBase, IGN, Kadaster NL, Ordnance Survey, Esri Japan, METI, Esri China (Hong Kong), (c) OpenStreetMap contributors, and the GIS User Community



Harpeth 2020 Draft Assessment

ATTAINMENT

- Fully Supporting
- Not Assessed
- Not Supporting
- Watershed Boundary

Sources: Esri, HERE, Garmin, Intermap, increment P Corp., GEBCO, USGS, FAO, NPS, NRCAN, GeoBase, IGN, Kadaster NL, Ordnance Survey, Esri Japan, METI, Esri China (Hong Kong), (c) OpenStreetMap contributors, and the GIS User Community