



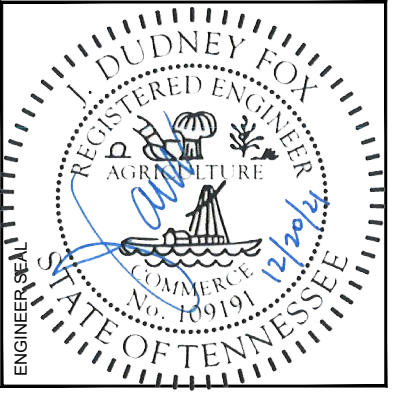
MATCHLINE - SHEET C4.0

HATCHER DRIVE

MATCHLINE - SHEET C8.0

MATCHLINE - SHEET C10.0

MATCHLINE - SHEET C15.0



FAYETTEVILLE PUBLIC UTILITIES  
 2021 WATER SYSTEM  
 IMPROVEMENTS WATER  
 MAIN REPLACEMENTS  
 1600-022



NORTH  
 CAJ  
 APPROVED BY  
 JDF

DATE	ISSUE

TITLE  
 PLAN VIEW  
 DRAWING NO.  
**C9.0**

**GENERAL NOTES:**

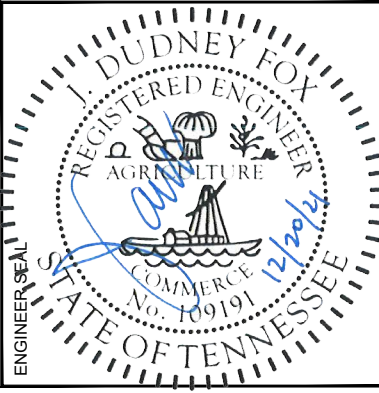
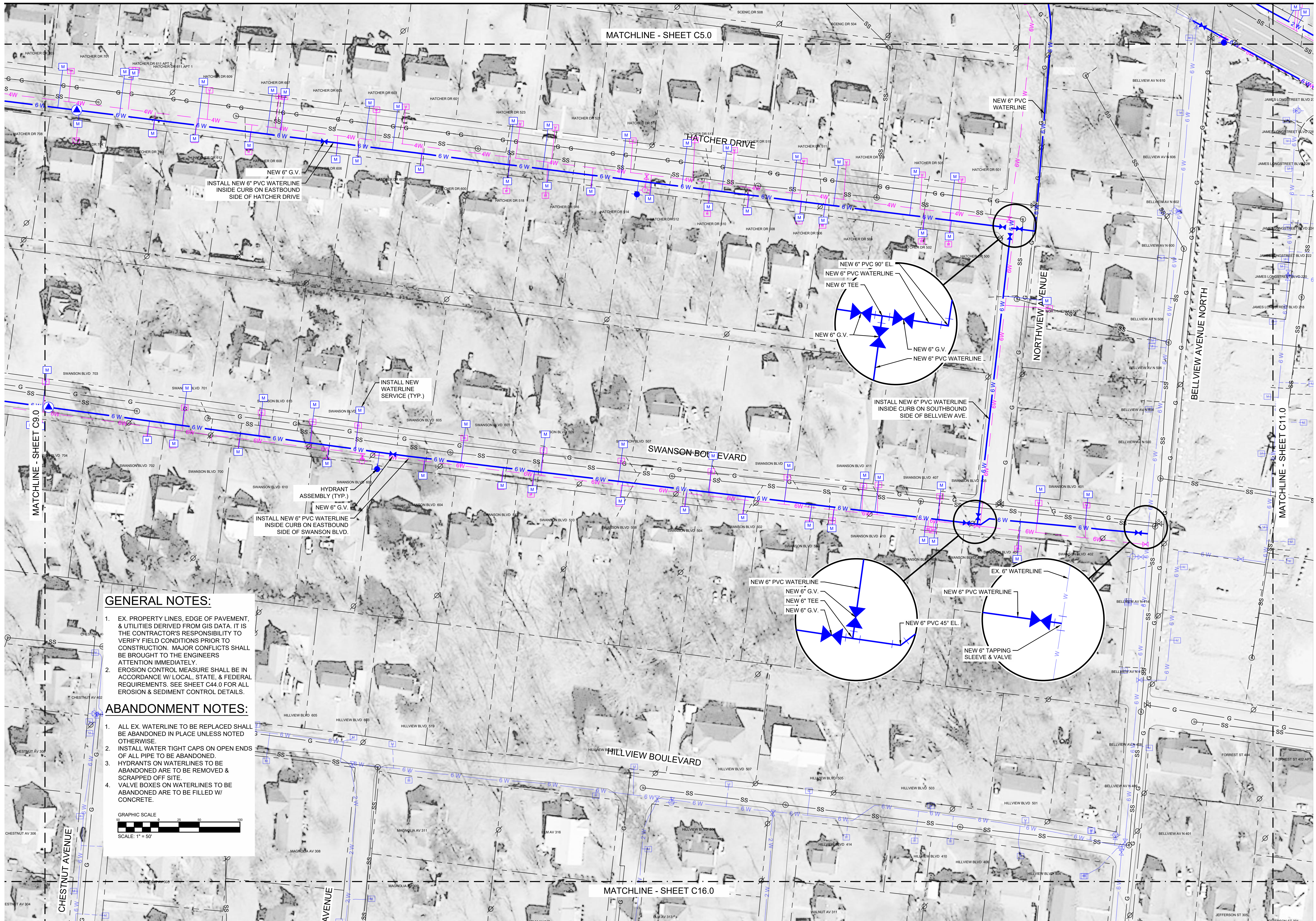
- EX. PROPERTY LINES, EDGE OF PAVEMENT, & UTILITIES DERIVED FROM GIS DATA. IT IS THE CONTRACTOR'S RESPONSIBILITY TO VERIFY FIELD CONDITIONS PRIOR TO CONSTRUCTION. MAJOR CONFLICTS SHALL BE BROUGHT TO THE ENGINEERS ATTENTION IMMEDIATELY.
- EROSION CONTROL MEASURE SHALL BE IN ACCORDANCE W/ LOCAL, STATE, & FEDERAL REQUIREMENTS. SEE SHEET C44.0 FOR ALL EROSION & SEDIMENT CONTROL DETAILS.

**ABANDONMENT NOTES:**

- ALL EX. WATERLINE TO BE REPLACED SHALL BE ABANDONED IN PLACE UNLESS NOTED OTHERWISE.
- INSTALL WATER TIGHT CAPS ON OPEN ENDS OF ALL PIPE TO BE ABANDONED.
- HYDRANTS ON WATERLINES TO BE ABANDONED ARE TO BE REMOVED & SCRAPPED OFF SITE.
- VALVE BOXES ON WATERLINES TO BE ABANDONED ARE TO BE FILLED W/ CONCRETE.

GRAPHIC SCALE  
 SCALE: 1" = 50'

All dimensions to be field verified prior to commencement of work. This drawing is COPYRIGHT of FOXPE. Any unauthorized reproduction, transmission, or storage of this document in whole or part constitutes an infringement of copyright. The information, ideas, and concepts presented within this document are confidential and the recipients of this document are prohibited from disclosing such information, ideas or concepts to any person without the prior written consent of FOXPE.



FAYETTEVILLE PUBLIC UTILITIES  
 2021 WATER SYSTEM  
 IMPROVEMENTS WATER  
 MAIN REPLACEMENTS  
 1600-022

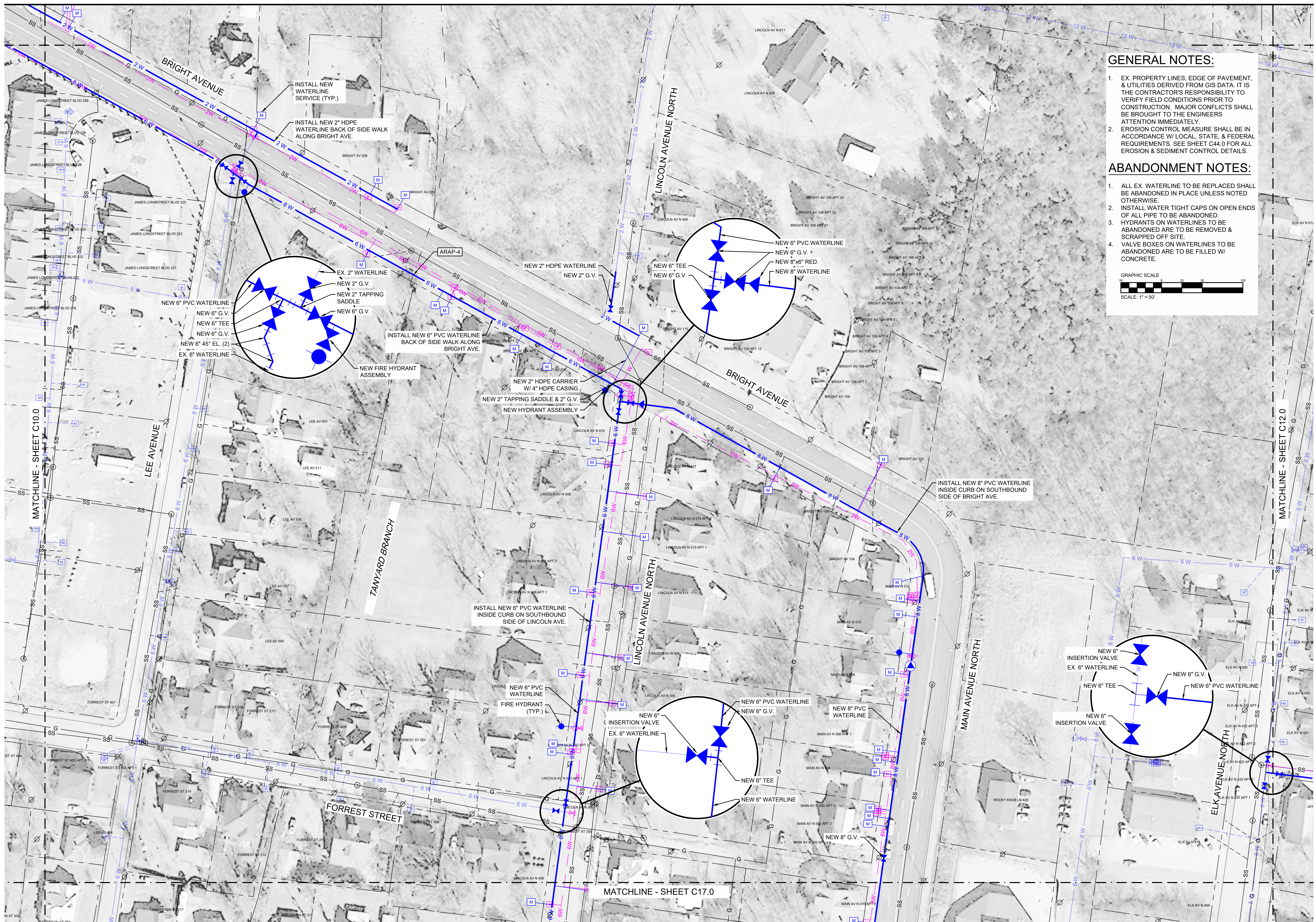


NORTH  
 DRAWN BY  
**CAJ**  
 APPROVED BY  
**JDF**

DATE	ISSUE

TITLE  
**PLAN VIEW**  
 DRAWING NO.  
**C10.0**

All dimensions to be field verified prior to commencement of work. This drawing is COPYRIGHT of FOXPE. Any unauthorized reproduction, transmission, or storage of this document in whole or part constitutes an infringement of copyright. The information, ideas, and concepts presented within this document are confidential and the recipients of this document are prohibited from disclosing such information, ideas or concepts to any person without the prior written consent of FOXPE.

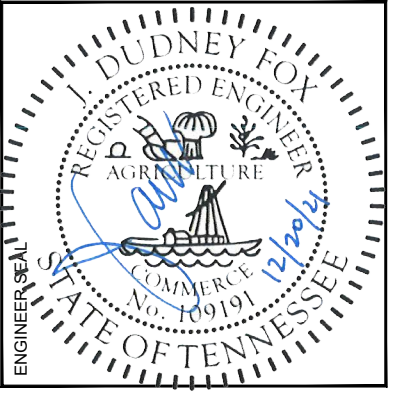
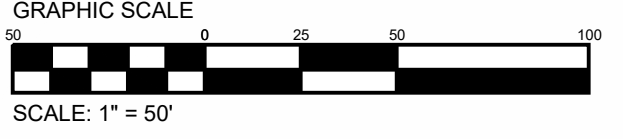


**GENERAL NOTES:**

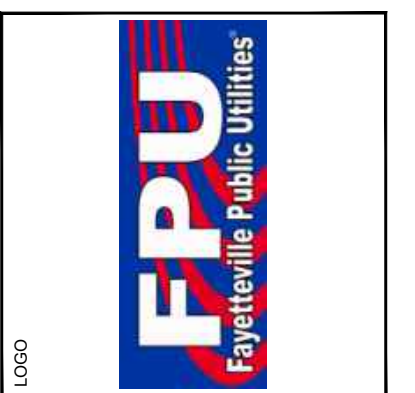
1. EX. PROPERTY LINES, EDGE OF PAVEMENT, & UTILITIES DERIVED FROM GIS DATA. IT IS THE CONTRACTOR'S RESPONSIBILITY TO VERIFY FIELD CONDITIONS PRIOR TO CONSTRUCTION. MAJOR CONFLICTS SHALL BE BROUGHT TO THE ENGINEERS ATTENTION IMMEDIATELY.
2. EROSION CONTROL MEASURE SHALL BE IN ACCORDANCE W/ LOCAL, STATE, & FEDERAL REQUIREMENTS. SEE SHEET C44.0 FOR ALL EROSION & SEDIMENT CONTROL DETAILS.

**ABANDONMENT NOTES:**

1. ALL EX. WATERLINE TO BE REPLACED SHALL BE ABANDONED IN PLACE UNLESS NOTED OTHERWISE.
2. INSTALL WATER TIGHT CAPS ON OPEN ENDS OF ALL PIPE TO BE ABANDONED.
3. HYDRANTS ON WATERLINES TO BE ABANDONED ARE TO BE REMOVED & SCRAPPED OFF SITE.
4. VALVE BOXES ON WATERLINES TO BE ABANDONED ARE TO BE FILLED W/ CONCRETE.



FAYETTEVILLE PUBLIC UTILITIES  
 2021 WATER SYSTEM  
 IMPROVEMENTS WATER  
 MAIN REPLACEMENTS  
 1600-022

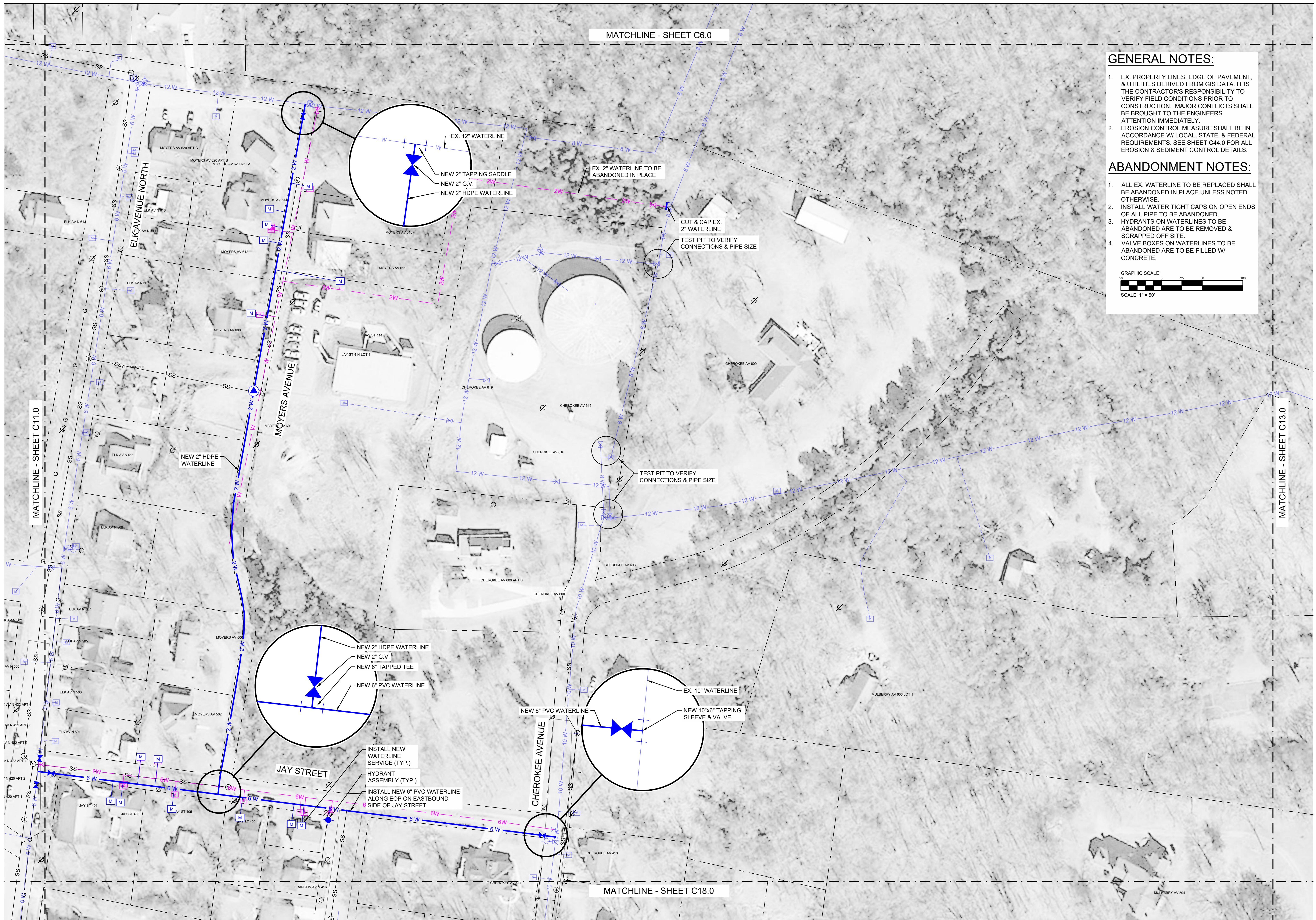


DRAWN BY: CAJ  
 APPROVED BY: JDF

DATE	ISSUE

TITLE: PLAN VIEW  
 DRAWING NO.: C11.0

All dimensions to be field verified prior to commencement of work. This drawing is COPYRIGHT of FOXPE. Any unauthorized reproduction, transmission, or storage of this document in whole or part constitutes an infringement of copyright. The information, ideas, and concepts presented within this document are confidential and the recipients of this document are prohibited from disclosing such information, ideas or concepts to any person without the prior written consent of FOXPE.



MATCHLINE - SHEET C6.0

MATCHLINE - SHEET C18.0

MATCHLINE - SHEET C11.0

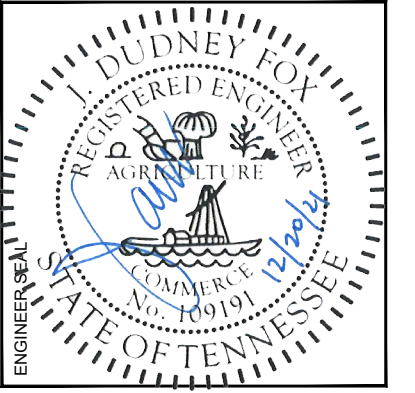
MATCHLINE - SHEET C13.0

**GENERAL NOTES:**

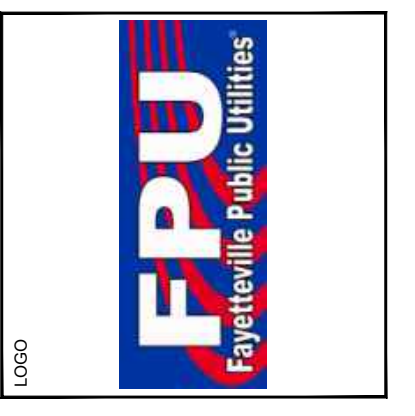
1. EX. PROPERTY LINES, EDGE OF PAVEMENT, & UTILITIES DERIVED FROM GIS DATA. IT IS THE CONTRACTOR'S RESPONSIBILITY TO VERIFY FIELD CONDITIONS PRIOR TO CONSTRUCTION. MAJOR CONFLICTS SHALL BE BROUGHT TO THE ENGINEERS ATTENTION IMMEDIATELY.
2. EROSION CONTROL MEASURE SHALL BE IN ACCORDANCE W/ LOCAL, STATE, & FEDERAL REQUIREMENTS. SEE SHEET C44.0 FOR ALL EROSION & SEDIMENT CONTROL DETAILS.

**ABANDONMENT NOTES:**

1. ALL EX. WATERLINE TO BE REPLACED SHALL BE ABANDONED IN PLACE UNLESS NOTED OTHERWISE.
2. INSTALL WATER TIGHT CAPS ON OPEN ENDS OF ALL PIPE TO BE ABANDONED.
3. HYDRANTS ON WATERLINES TO BE ABANDONED ARE TO BE REMOVED & SCRAPPED OFF SITE.
4. VALVE BOXES ON WATERLINES TO BE ABANDONED ARE TO BE FILLED W/ CONCRETE.



FAYETTEVILLE PUBLIC UTILITIES  
 2021 WATER SYSTEM  
 IMPROVEMENTS WATER  
 MAIN REPLACEMENTS  
 1600-022

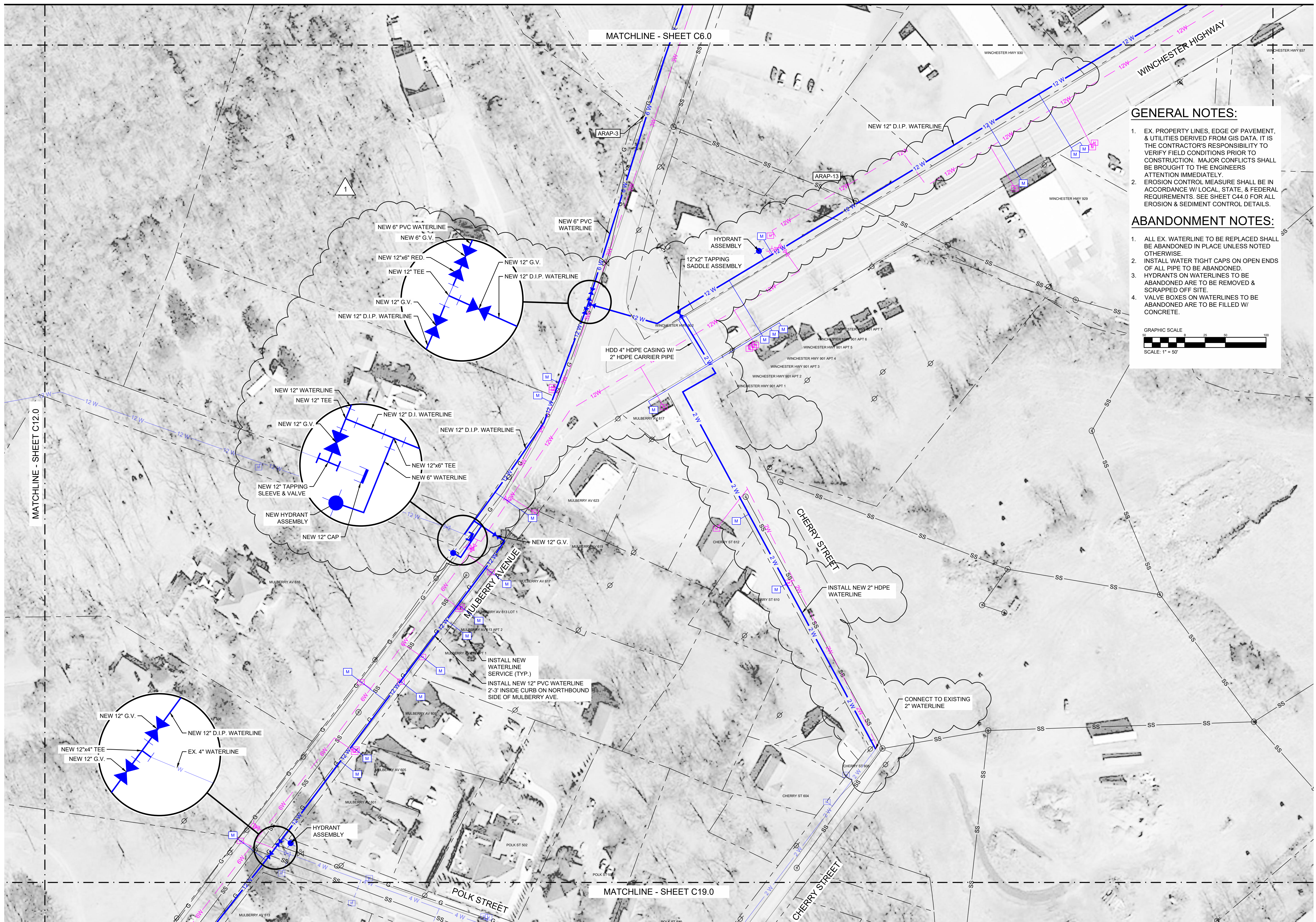


NORTH  
 DRAWN BY  
**CAJ**  
 APPROVED BY  
**JDF**

DATE	ISSUE

TITLE  
**PLAN VIEW**  
 DRAWING NO.  
**C12.0**

All dimensions to be field verified prior to commencement of work. This drawing is COPYRIGHT of FOXPE. Any unauthorized reproduction, transmission, or storage of this document in whole or part constitutes an infringement of copyright. The information, ideas, and concepts presented within this document are confidential and the recipients of this document are prohibited from disclosing such information, ideas or concepts to any person without the prior written consent of FOXPE.



MATCHLINE - SHEET C6.0

MATCHLINE - SHEET C19.0

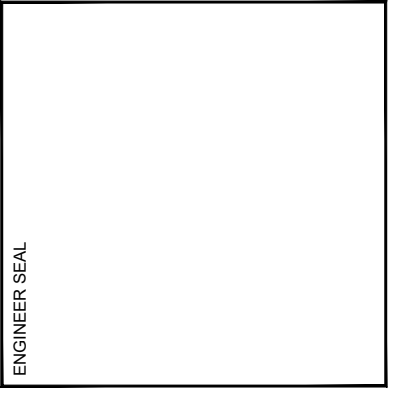
MATCHLINE - SHEET C12.0

**GENERAL NOTES:**

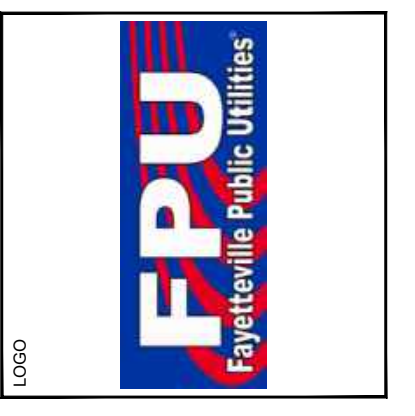
1. EX. PROPERTY LINES, EDGE OF PAVEMENT, & UTILITIES DERIVED FROM GIS DATA. IT IS THE CONTRACTOR'S RESPONSIBILITY TO VERIFY FIELD CONDITIONS PRIOR TO CONSTRUCTION. MAJOR CONFLICTS SHALL BE BROUGHT TO THE ENGINEERS ATTENTION IMMEDIATELY.
2. EROSION CONTROL MEASURE SHALL BE IN ACCORDANCE W/ LOCAL, STATE, & FEDERAL REQUIREMENTS. SEE SHEET C44.0 FOR ALL EROSION & SEDIMENT CONTROL DETAILS.

**ABANDONMENT NOTES:**

1. ALL EX. WATERLINE TO BE REPLACED SHALL BE ABANDONED IN PLACE UNLESS NOTED OTHERWISE.
2. INSTALL WATER TIGHT CAPS ON OPEN ENDS OF ALL PIPE TO BE ABANDONED.
3. HYDRANTS ON WATERLINES TO BE ABANDONED ARE TO BE REMOVED & SCRAPPED OFF SITE.
4. VALVE BOXES ON WATERLINES TO BE ABANDONED ARE TO BE FILLED W/ CONCRETE.



FAYETTEVILLE PUBLIC UTILITIES  
 2021 WATER SYSTEM  
 IMPROVEMENTS WATER  
 MAIN REPLACEMENTS  
 1600-022



NORTH

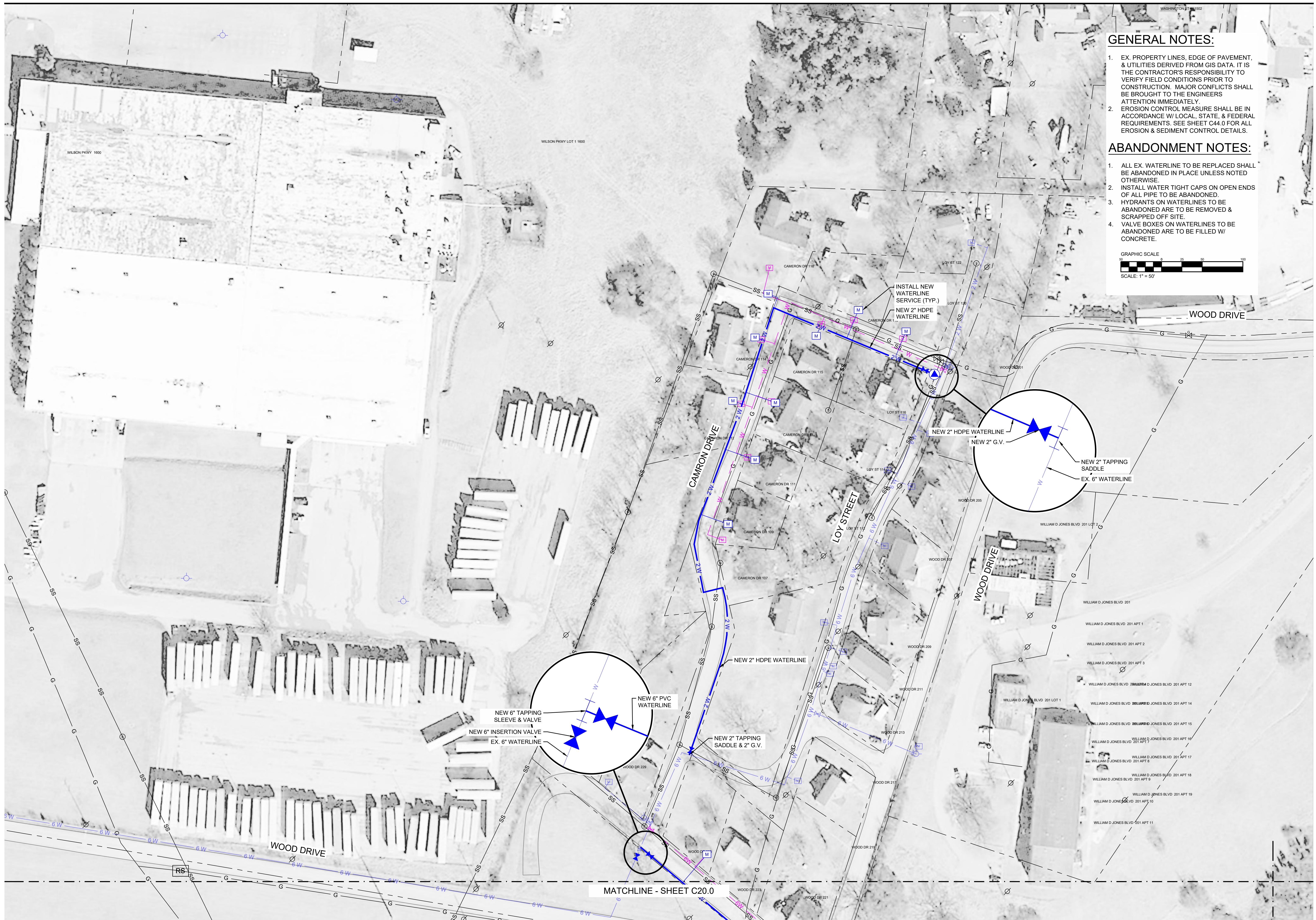
DRAWN BY CAJ  
 APPROVED BY JDF

DATE	ISSUE
6/2/24	REV 1

TITLE  
 PLAN VIEW

DRAWING NO.  
**C13.0**

All dimensions to be field verified prior to commencement of work. This drawing is COPYRIGHT of FOXPE. Any unauthorized reproduction, transmission, or storage of this document in whole or part constitutes an infringement of copyright. The information, ideas, and concepts presented within this document are confidential and the recipients of this document are prohibited from disclosing such information, ideas or concepts to any person without the prior written consent of FOXPE.

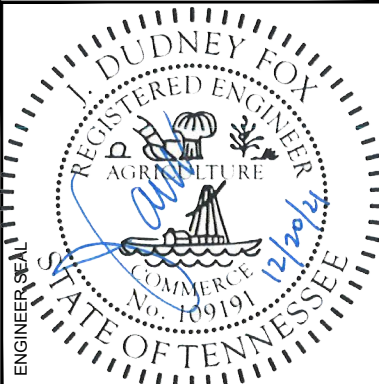


**GENERAL NOTES:**

1. EX. PROPERTY LINES, EDGE OF PAVEMENT, & UTILITIES DERIVED FROM GIS DATA. IT IS THE CONTRACTOR'S RESPONSIBILITY TO VERIFY FIELD CONDITIONS PRIOR TO CONSTRUCTION. MAJOR CONFLICTS SHALL BE BROUGHT TO THE ENGINEERS ATTENTION IMMEDIATELY.
2. EROSION CONTROL MEASURE SHALL BE IN ACCORDANCE W/ LOCAL, STATE, & FEDERAL REQUIREMENTS. SEE SHEET C44.0 FOR ALL EROSION & SEDIMENT CONTROL DETAILS.

**ABANDONMENT NOTES:**

1. ALL EX. WATERLINE TO BE REPLACED SHALL BE ABANDONED IN PLACE UNLESS NOTED OTHERWISE.
2. INSTALL WATER TIGHT CAPS ON OPEN ENDS OF ALL PIPE TO BE ABANDONED.
3. HYDRANTS ON WATERLINES TO BE ABANDONED ARE TO BE REMOVED & SCRAPPED OFF SITE.
4. VALVE BOXES ON WATERLINES TO BE ABANDONED ARE TO BE FILLED W/ CONCRETE.



FAYETTEVILLE PUBLIC UTILITIES  
 2021 WATER SYSTEM  
 IMPROVEMENTS WATER  
 MAIN REPLACEMENTS  
 1600-022

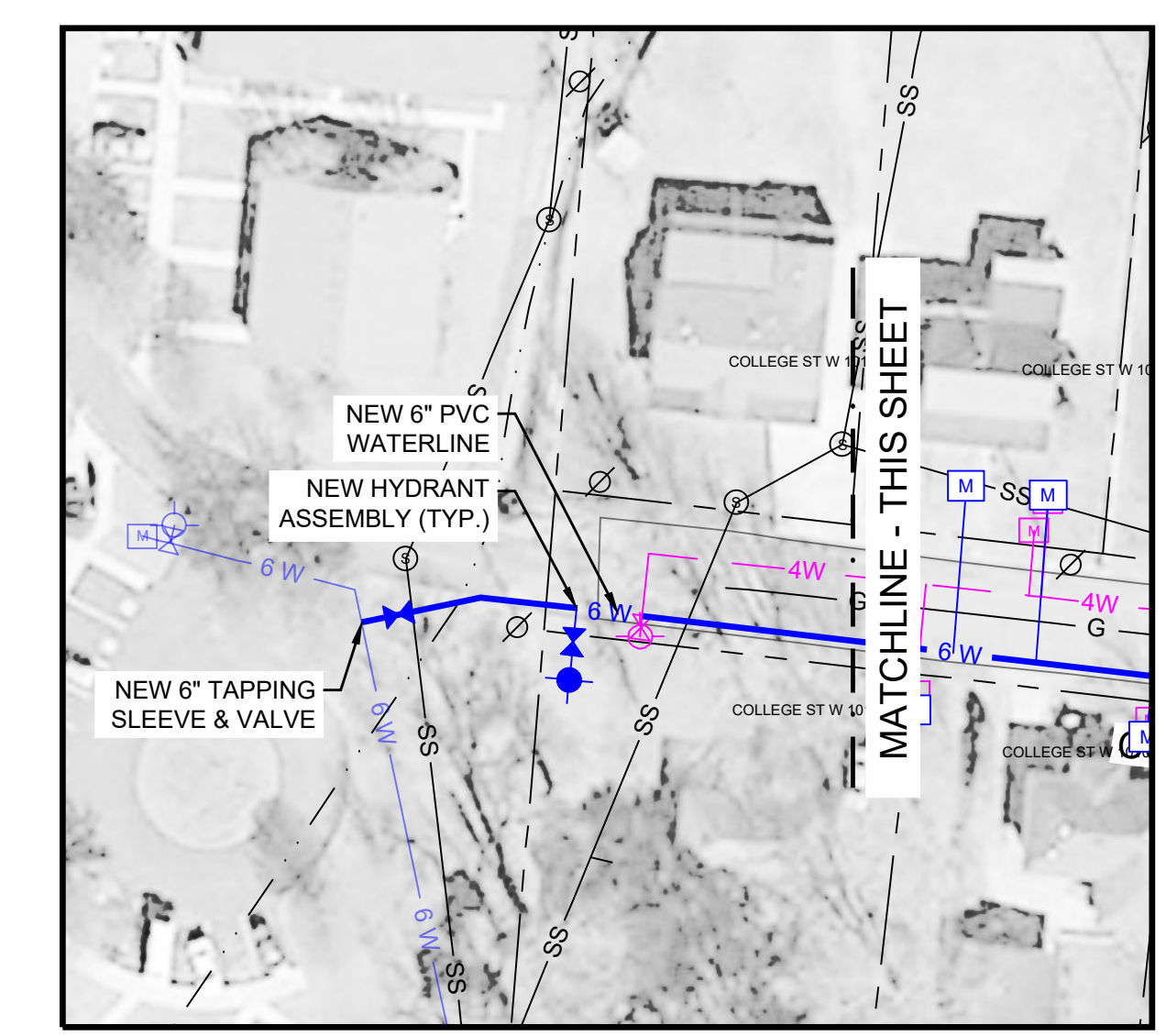
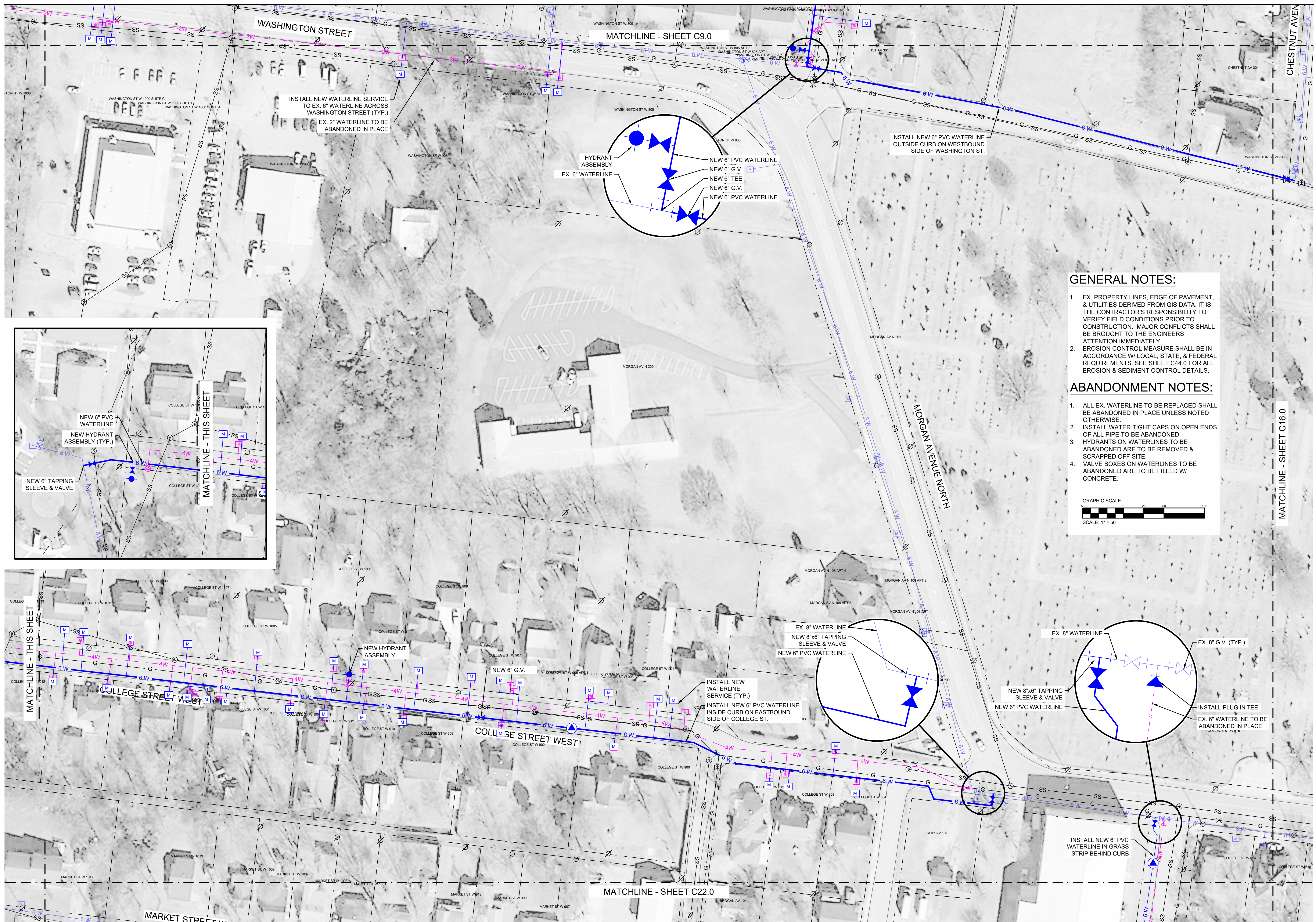


NORTH  
 DRAWN BY: CAJ  
 APPROVED BY: JDF

DATE	ISSUE

TITLE: PLAN VIEW  
 DRAWING NO.: C14.0

All dimensions to be field verified prior to commencement of work. This drawing is COPYRIGHT of FOXPE. Any unauthorized reproduction, transmission, or storage of this document in whole or part constitutes an infringement of copyright. The information, ideas, and concepts presented within this document are confidential and the recipients of this document are prohibited from disclosing such information, ideas or concepts to any person without the prior written consent of FOXPE.



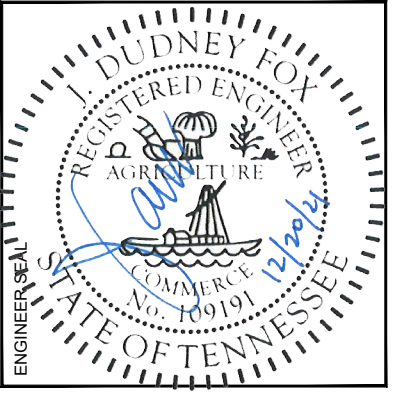
**GENERAL NOTES:**

- EX. PROPERTY LINES, EDGE OF PAVEMENT, & UTILITIES DERIVED FROM GIS DATA. IT IS THE CONTRACTOR'S RESPONSIBILITY TO VERIFY FIELD CONDITIONS PRIOR TO CONSTRUCTION. MAJOR CONFLICTS SHALL BE BROUGHT TO THE ENGINEERS ATTENTION IMMEDIATELY.
- EROSION CONTROL MEASURE SHALL BE IN ACCORDANCE W/ LOCAL, STATE, & FEDERAL REQUIREMENTS. SEE SHEET C44.0 FOR ALL EROSION & SEDIMENT CONTROL DETAILS.

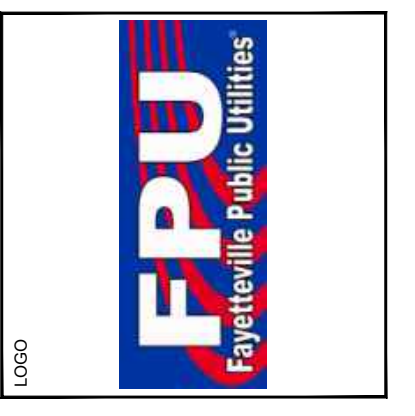
**ABANDONMENT NOTES:**

- ALL EX. WATERLINE TO BE REPLACED SHALL BE ABANDONED IN PLACE UNLESS NOTED OTHERWISE.
- INSTALL WATER TIGHT CAPS ON OPEN ENDS OF ALL PIPE TO BE ABANDONED.
- HYDRANTS ON WATERLINES TO BE ABANDONED ARE TO BE REMOVED & SCRAPPED OFF-SITE.
- VALVE BOXES ON WATERLINES TO BE ABANDONED ARE TO BE FILLED W/ CONCRETE.

GRAPHIC SCALE  
SCALE: 1" = 50'



FAYETTEVILLE PUBLIC UTILITIES  
2021 WATER SYSTEM  
IMPROVEMENTS WATER  
MAIN REPLACEMENTS  
1600-022

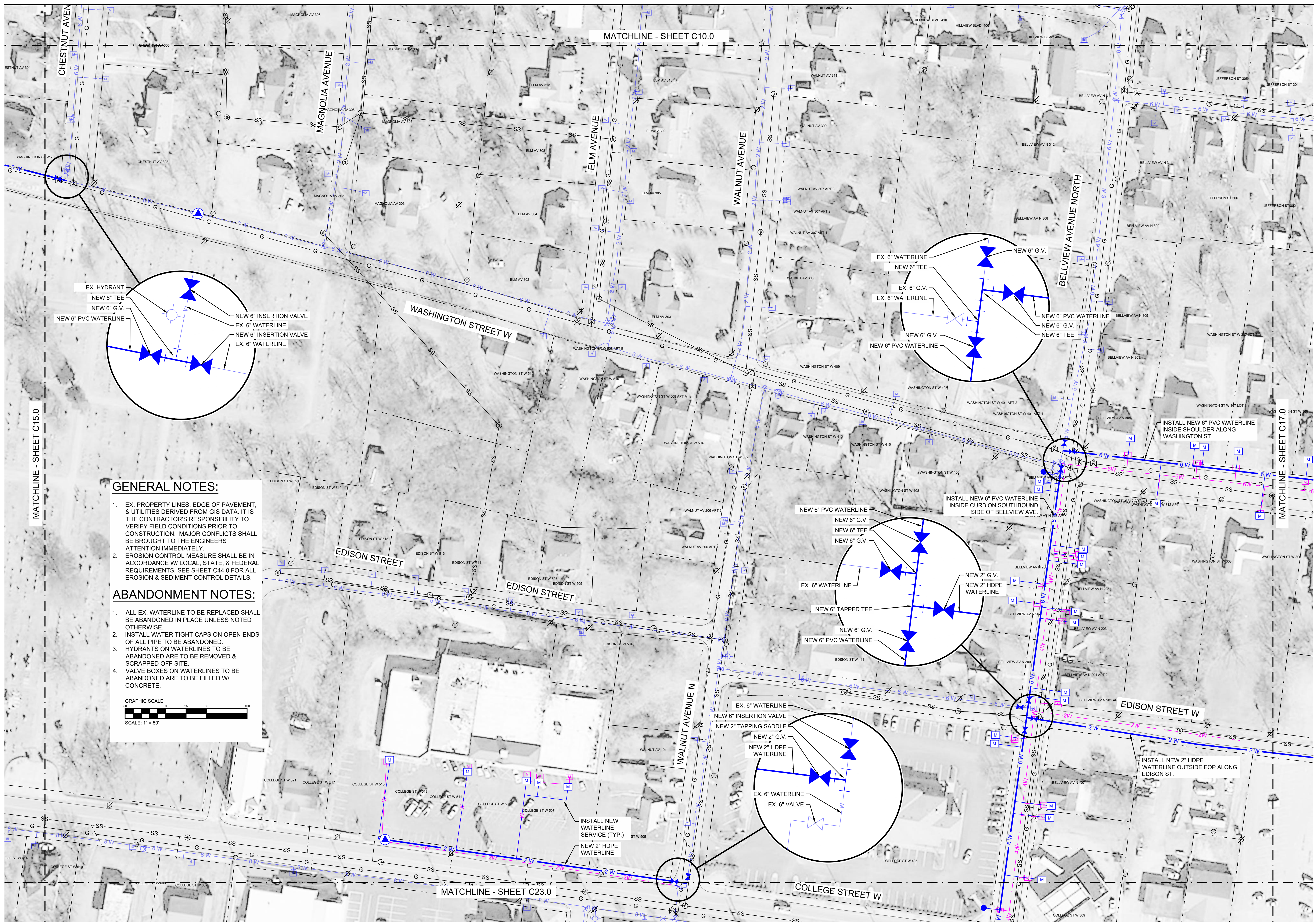


NORTH  
DRAWN BY: CAJ  
APPROVED BY: JDF

DATE	ISSUE

TITLE  
PLAN VIEW  
DRAWING NO.  
**C15.0**

All dimensions to be field verified prior to commencement of work. This drawing is COPYRIGHT of FOXPE. Any unauthorized reproduction, transmission, or storage of this document in whole or part constitutes an infringement of copyright. The information, ideas, and concepts presented within this document are confidential and the recipients of this document are prohibited from disclosing such information, ideas or concepts to any person without the prior written consent of FOXPE.



MATCHLINE - SHEET C10.0

MATCHLINE - SHEET C15.0

MATCHLINE - SHEET C17.0

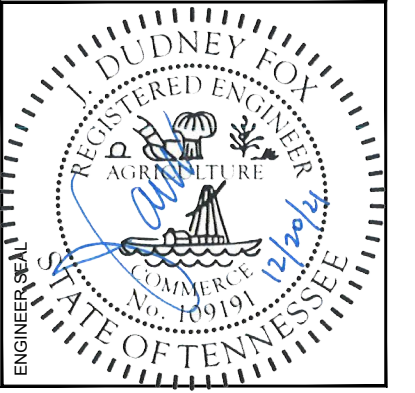
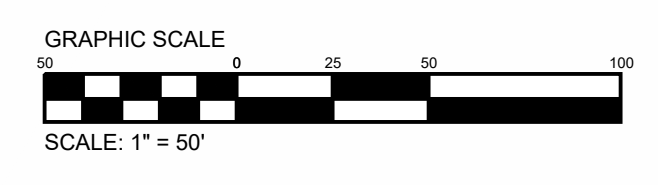
MATCHLINE - SHEET C23.0

**GENERAL NOTES:**

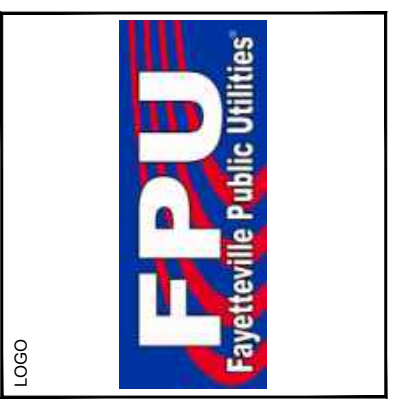
1. EX. PROPERTY LINES, EDGE OF PAVEMENT, & UTILITIES DERIVED FROM GIS DATA. IT IS THE CONTRACTOR'S RESPONSIBILITY TO VERIFY FIELD CONDITIONS PRIOR TO CONSTRUCTION. MAJOR CONFLICTS SHALL BE BROUGHT TO THE ENGINEERS ATTENTION IMMEDIATELY.
2. EROSION CONTROL MEASURE SHALL BE IN ACCORDANCE W/ LOCAL, STATE, & FEDERAL REQUIREMENTS. SEE SHEET C44.0 FOR ALL EROSION & SEDIMENT CONTROL DETAILS.

**ABANDONMENT NOTES:**

1. ALL EX. WATERLINE TO BE REPLACED SHALL BE ABANDONED IN PLACE UNLESS NOTED OTHERWISE.
2. INSTALL WATER TIGHT CAPS ON OPEN ENDS OF ALL PIPE TO BE ABANDONED.
3. HYDRANTS ON WATERLINES TO BE ABANDONED ARE TO BE REMOVED & SCRAPPED OFF SITE.
4. VALVE BOXES ON WATERLINES TO BE ABANDONED ARE TO BE FILLED W/ CONCRETE.



FAYETTEVILLE PUBLIC UTILITIES  
**2021 WATER SYSTEM  
 IMPROVEMENTS WATER  
 MAIN REPLACEMENTS**  
 1600-022



NORTH  
 DRAWN BY  
**CAJ**  
 APPROVED BY  
**JDF**

DATE	ISSUE

TITLE  
**PLAN VIEW**  
 DRAWING NO.  
**C16.0**

All dimensions to be field verified prior to commencement of work. This drawing is COPYRIGHT of FOXPE. Any unauthorized reproduction, transmission, or storage of this document in whole or part constitutes an infringement of copyright. The information, ideas, and concepts presented within this document are confidential and the recipients of this document are prohibited from disclosing such information, ideas or concepts to any person without the prior written consent of FOXPE.



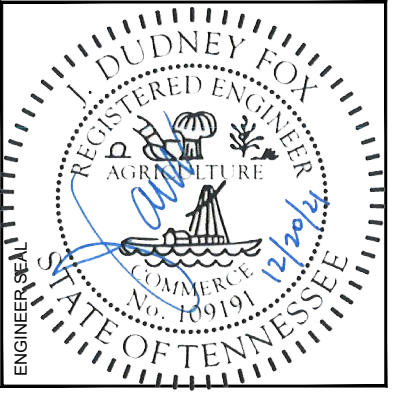
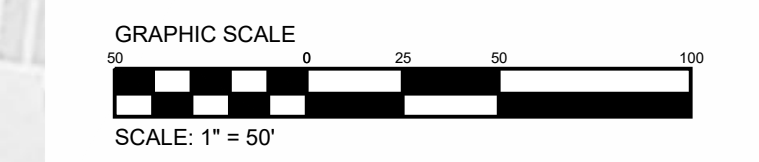


**GENERAL NOTES:**

1. EX. PROPERTY LINES, EDGE OF PAVEMENT, & UTILITIES DERIVED FROM GIS DATA. IT IS THE CONTRACTOR'S RESPONSIBILITY TO VERIFY FIELD CONDITIONS PRIOR TO CONSTRUCTION. MAJOR CONFLICTS SHALL BE BROUGHT TO THE ENGINEERS ATTENTION IMMEDIATELY.
2. EROSION CONTROL MEASURE SHALL BE IN ACCORDANCE W/ LOCAL, STATE, & FEDERAL REQUIREMENTS. SEE SHEET C44.0 FOR ALL EROSION & SEDIMENT CONTROL DETAILS.

**ABANDONMENT NOTES:**

1. ALL EX. WATERLINE TO BE REPLACED SHALL BE ABANDONED IN PLACE UNLESS NOTED OTHERWISE.
2. INSTALL WATER TIGHT CAPS ON OPEN ENDS OF ALL PIPE TO BE ABANDONED.
3. HYDRANTS ON WATERLINES TO BE ABANDONED ARE TO BE REMOVED & SCRAPPED OFF SITE.
4. VALVE BOXES ON WATERLINES TO BE ABANDONED ARE TO BE FILLED W/ CONCRETE.



FAYETTEVILLE PUBLIC UTILITIES  
2021 WATER SYSTEM  
IMPROVEMENTS WATER  
MAIN REPLACEMENTS  
1600-022

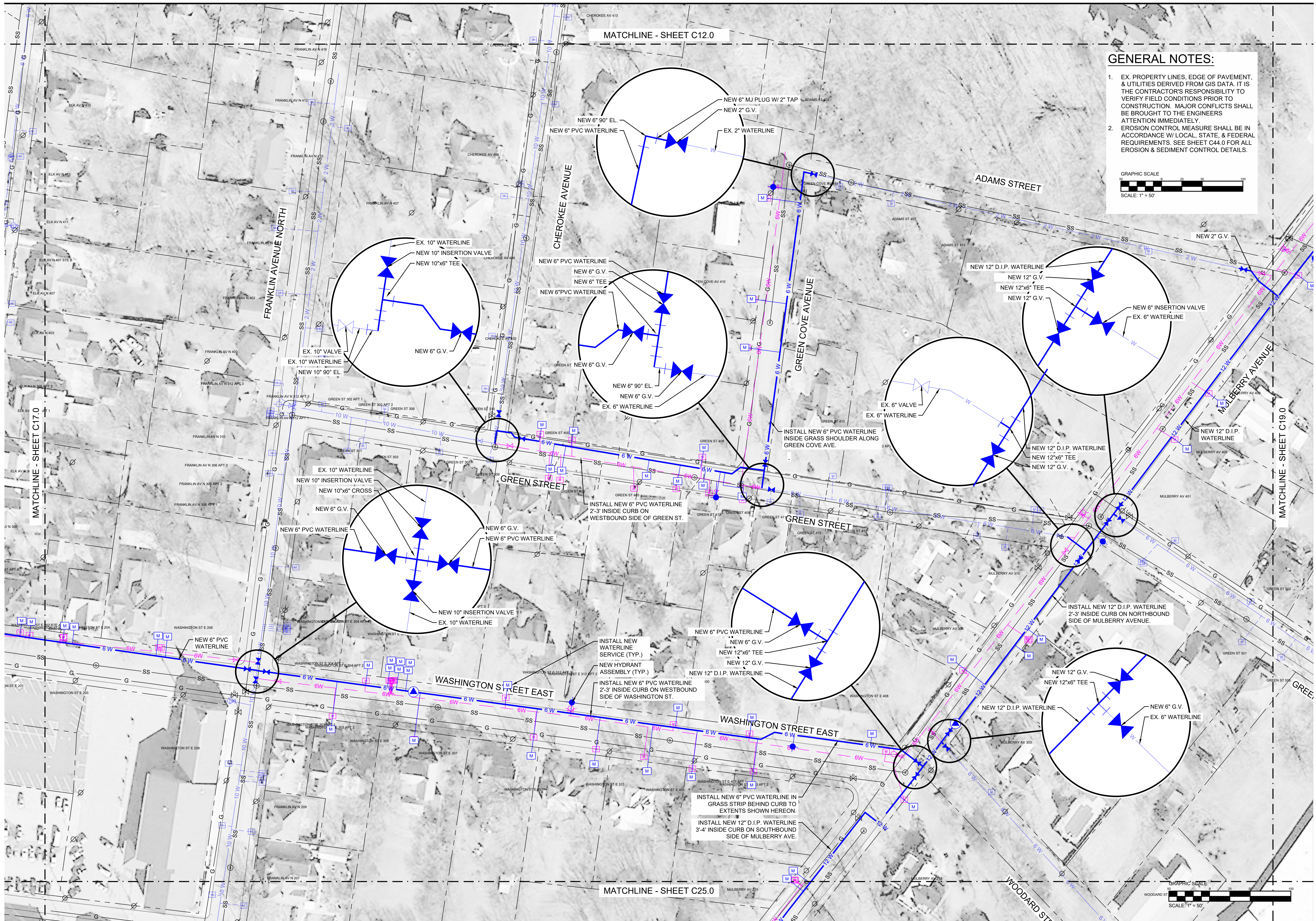


NORTH  
DRAWN BY  
**CAJ**  
APPROVED BY  
**JDF**

DATE	ISSUE

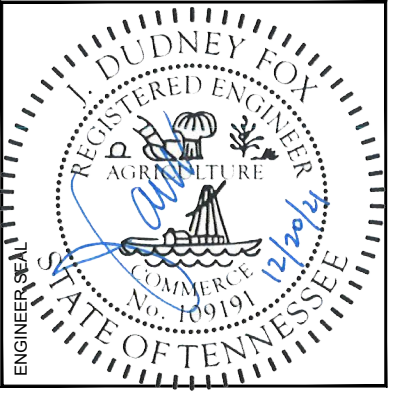
TITLE  
**PLAN VIEW**  
DRAWING NO.  
**C17.0**

All dimensions to be field verified prior to commencement of work. This drawing is COPYRIGHT of FOXPE. Any unauthorized reproduction, transmission, or storage of this document in whole or part constitutes an infringement of copyright. The information, ideas, and concepts presented within this document are confidential and the recipients of this document are prohibited from disclosing such information, ideas or concepts to any person without the prior written consent of FOXPE.



**GENERAL NOTES:**

1. EX. PROPERTY LINES, EDGE OF PAVEMENT, & UTILITIES DERIVED FROM GIS DATA. IT IS THE CONTRACTOR'S RESPONSIBILITY TO VERIFY FIELD CONDITIONS PRIOR TO CONSTRUCTION. MAJOR CONFLICTS SHALL BE BROUGHT TO THE ENGINEERS ATTENTION IMMEDIATELY.
2. EROSION CONTROL MEASURE SHALL BE IN ACCORDANCE W/ LOCAL, STATE, & FEDERAL REQUIREMENTS. SEE SHEET C44.0 FOR ALL EROSION & SEDIMENT CONTROL DETAILS.



FAYETTEVILLE PUBLIC UTILITIES  
**2021 WATER SYSTEM  
 IMPROVEMENTS WATER  
 MAIN REPLACEMENTS**  
 1600-022



DRAWN BY: CAJ  
 APPROVED BY: JDF

DATE	ISSUE

TITLE: PLAN VIEW  
 DRAWING NO.: **C18.0**

All dimensions to be field verified prior to commencement of work. This drawing is COPYRIGHT of FOXPE. Any unauthorized reproduction, transmission, or storage of this document in whole or part constitutes an infringement of copyright. The information, ideas, and concepts presented within this document are confidential and the recipients of this document are prohibited from disclosing such information, ideas or concepts to any person without the prior written consent of FOXPE.