

SSR Smith Seckman Reid, Inc.
 2650 Thousand Oaks Boulevard,
 Suite 4200
 Memphis, TN 38118
 (901) 683-3900
 FAX: (901) 683-3990
 www.ssr-inc.com
 SSR PROJECT #24410470



No.	Date	Description
1	7/16/24	ADDENDUM #1



CITY OF DYERSBURG

JENNIE BELL SCHOOL TRAIL

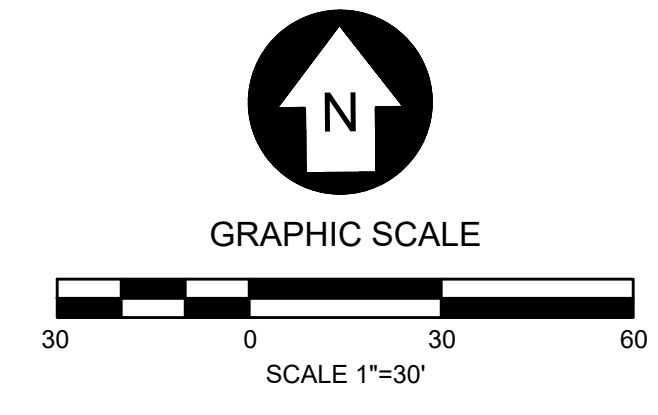
EXISTING CONDITIONS & DEMOLITION PLAN

DRAWN BY: MW
 DESIGNED BY: BT
 CHECKED BY: TH
 Q.A.Q.C. BY: SSR

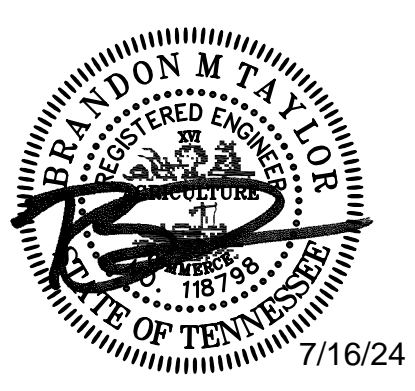
PHASE: CD
 DATE: 07/02/24

DRAWING NO:
C1.0

UTILITY NOTE: LOCATION OF EXISTING UNDERGROUND UTILITIES ARE APPROXIMATE AND NOT NECESSARILY THE SAME. THE CONTRACTOR SHALL BE RESPONSIBLE FOR CONTACTING THE APPROPRIATE UTILITY COMPANY TO DETERMINE THE EXACT LOCATION OF ALL UTILITIES AND UNDERGROUND STRUCTURES PRIOR TO THE INITIATION OF ANY CONSTRUCTION. CONTRACTOR SHALL ASSUME FULL RESPONSIBILITY FOR DAMAGE TO ANY UTILITIES ENCOUNTERED WITHIN CONSTRUCTION LIMITS. CALL 811 FOR UTILITY LOCATIONS.



SSR Smith Seckman Reid, Inc.
 2650 Thousand Oaks Boulevard,
 Suite 4200
 Memphis, TN 38118
 (901) 683-3900
 FAX: (901) 683-3990
 www.ssr-inc.com
 SSR PROJECT #24410470



CONSTRUCTION NOTES:

1. WHEN A CHANGE FROM APPROVED DESIGN IS DETERMINED TO BE NEEDED BY THE CONTRACTOR, THE PROJECT DESIGN ENGINEER SHOULD BE NOTIFIED BY THE CONTRACTOR AS SOON AS POSSIBLE TO EVALUATE THE REQUESTED CHANGE OR PROBLEM WITH THE PLANS. THE PROJECT DESIGN ENGINEER SHOULD THEN SUBMIT A PROPOSAL TO THE CITY ENGINEER FOR REVIEW AND APPROVAL OF THE DESIGN CHANGE. AFTER THE CONTRACTOR RECEIVES REVISED DRAWINGS SIGNED BY THE CITY ENGINEER, WORK MAY PROCEED.
2. IT IS THE CONTRACTOR'S RESPONSIBILITY TO INSURE THAT ALL REQUIRED PERMITS, APPROVALS AND REQUIRED BONDS AND FEES ARE OBTAINED PRIOR TO THE START OF CONSTRUCTION.
3. SAWCUT ALL EXISTING, DISTURBED CONCRETE STRUCTURES AND ASPHALT PAVEMENT FOR TIE-INS OR MODIFICATIONS.
4. THE CONTRACTOR SHALL BE RESPONSIBLE FOR ALL CONSTRUCTION RELATED SURVEYING, HORIZONTAL AND VERTICAL STAKING, LAYOUT WORK, SOIL TESTING, SOIL CEMENT TESTING AND CONCRETE TESTING.
5. ANY EXISTING UTILITIES REQUIRING RELOCATION OR REMOVAL SHALL BE THE CONTRACTOR'S RESPONSIBILITY.
6. THE CONTRACTOR SHALL MAINTAIN ACCESS TO ALL PROPERTIES.
7. CONTRACTOR SHALL NOTIFY THE CITY OF DYERSBURG ENGINEERING OFFICE A MINIMUM OF 24 HOURS PRIOR TO BEGINNING ANY CONSTRUCTION.
8. THE CONTRACTOR SHALL VERIFY EXISTING DATA AND REPORT ANY SIGNIFICANT DISCREPANCIES TO THE ENGINEER.
9. THE CONTRACTOR SHALL BE RESPONSIBLE FOR VERIFICATION OF ALL DIMENSIONS ON DRAWINGS AS IT RELATES TO THEIR WORK PRIOR TO START OF CONSTRUCTION.
10. SURVEY WAS PROVIDED TO THE DESIGNER BY OTHERS. THEREFORE THE CONTRACTOR SHALL FIELD VERIFY THE LOCATIONS AND ELEVATIONS OF SITE FEATURES BASED ON THE CONTRACTORS HORIZONTAL AND VERTICAL CONTROLS. ANY DISCREPANCIES SHALL BE BROUGHT TO THE ATTENTION OF THE ENGINEER IMMEDIATELY. ANY DAMAGE OR REWORK CAUSED BY POSSIBLE DISCREPANCIES WILL BE SOLELY THE RESPONSIBILITY OF THE CONTRACTOR.

No.	Date	Description
1	7/16/24	ADDENDUM #1



CITY OF DYERSBURG

JENNIE BELL SCHOOL TRAIL

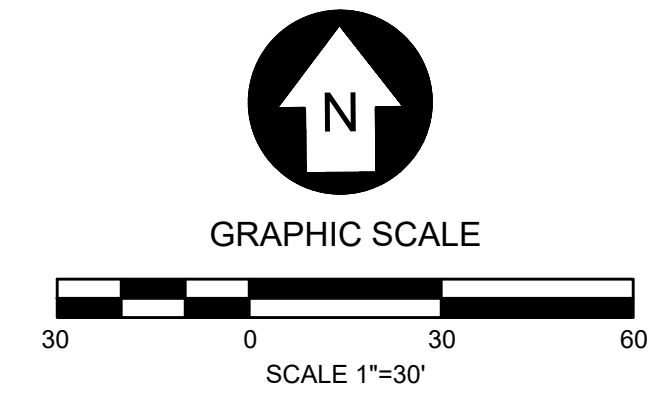
SITE LAYOUT PLAN

DRAWN BY: MW
 DESIGNED BY: BT
 CHECKED BY: TH
 Q.A.Q.C. BY: SSR

PHASE: CD
 DATE: 07/02/24
 DRAWING NO: C2.0

UTILITY NOTE: LOCATION OF EXISTING UNDERGROUND UTILITIES ARE APPROXIMATE AND NOT NECESSARILY THE SAME. THE CONTRACTOR SHALL BE RESPONSIBLE FOR CONTACTING THE APPROPRIATE UTILITY COMPANY TO DETERMINE THE EXACT LOCATION OF ALL UTILITIES AND UNDERGROUND STRUCTURES PRIOR TO THE INITIATION OF ANY CONSTRUCTION. CONTRACTOR SHALL ASSUME FULL RESPONSIBILITY FOR DAMAGE TO ANY UTILITIES ENCOUNTERED WITHIN CONSTRUCTION LIMITS. CALL 811 FOR UTILITY LOCATIONS.

NOTE: ALL CONSTRUCTION ACTIVITIES SHALL BE COMPLETED WITH FULL COMPLIANCE OF THE AMERICANS WITH DISABILITIES ACT ACCESSIBILITY STANDARDS AS WELL AS ANY ADDITIONAL ACCESSIBILITY STANDARDS IDENTIFIED AND ACCEPTED LOCALLY AND/OR ON THE STATE LEVEL.



SSR Smith Seckman Reid, Inc.
 2650 Thousand Oaks Boulevard,
 Suite 4200
 Memphis, TN 38118
 (901) 683-3900
 FAX: (901) 683-3990
 www.ssr-inc.com
 SSR PROJECT #24410470

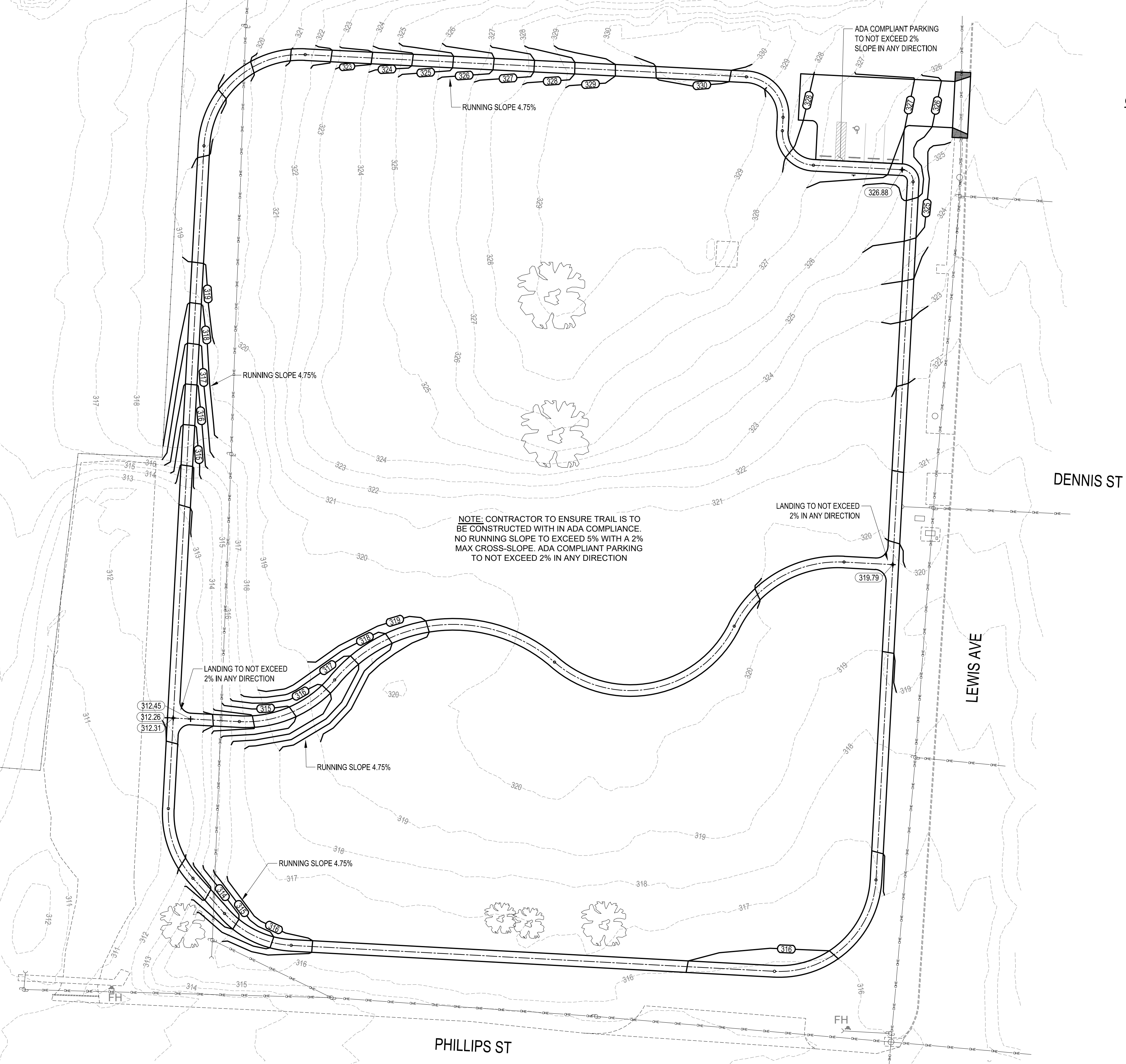


GENERAL GRADING NOTES:

1. ALL NEWLY CUT OR FILLED AREAS, LACKING ADEQUATE VEGETATION, SHALL BE SEEDED, MULCHED, FERTILIZED AND/OR SODED AS REQUIRED TO EFFECTIVELY CONTROL SOIL EROSION.
2. THE CONTRACTOR SHALL PROVIDE ADEQUATE AND EFFECTIVE EROSION CONTROL AS NECESSARY TO PREVENT ANY SILTATION INTO EXISTING RIVER AND OR ADJACENT PROPERTIES.
3. ALL FILL SOILS SHALL BE COMPACTED TO A MINIMUM OF 95% OF STANDARD PROCTOR DENSITY (ASTM D-698) WITHIN 3% OF OPTIMUM MOISTURE CONTENT IN LIFTS NOT TO EXCEED SIX (6) INCHES OF COMPACTED THICKNESS.
4. ALL CONSTRUCTION MATERIALS AND PROCEDURES SHALL MEET OR EXCEED TDOT STANDARD CONSTRUCTION SPECIFICATIONS.
5. VERIFY SITE CONDITIONS PRIOR TO CONSTRUCTION, NOTIFY THE CITY OF DYERSBURG ENGINEER OF ANY VARIATIONS PRIOR TO COMMENCEMENT OF WORK.
6. EXCESS CUT MATERIAL SHALL REMAIN ON SITE, GRADED TO DRAIN.
7. CONTRACTOR TO MAINTAIN NATURAL STORM WATER DRAINAGE PATTERN.

LEGEND

	NEW CONTOUR
	EXIST. CONTOUR
	PROPOSED SPOT ELEVATION



SHEET ADDED TO SET PER ADDENDUM #1

UTILITY NOTE: LOCATION OF EXISTING UNDERGROUND UTILITIES ARE APPROXIMATE AND NOT NECESSARILY THE SAME. THE CONTRACTOR SHALL BE RESPONSIBLE FOR CONTACTING THE APPROPRIATE UTILITY COMPANY TO DETERMINE THE EXACT LOCATION OF ALL UTILITIES AND UNDERGROUND STRUCTURES PRIOR TO THE INITIATION OF ANY CONSTRUCTION. CONTRACTOR SHALL ASSUME FULL RESPONSIBILITY FOR DAMAGE TO ANY UTILITIES ENCOUNTERED WITHIN CONSTRUCTION LIMITS. CALL 811 FOR UTILITY LOCATIONS.

No.	Date	Description
1	7/16/24	ADDENDUM #1



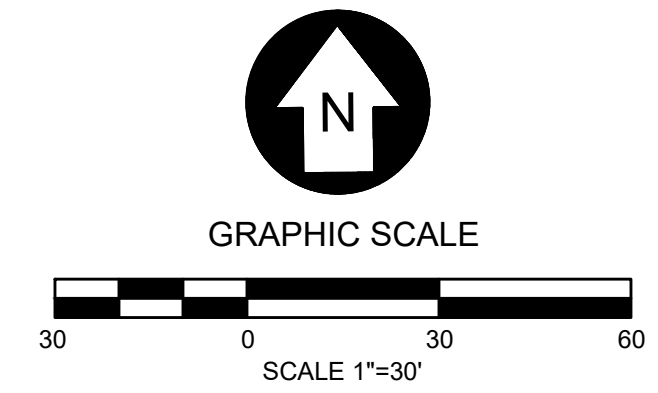
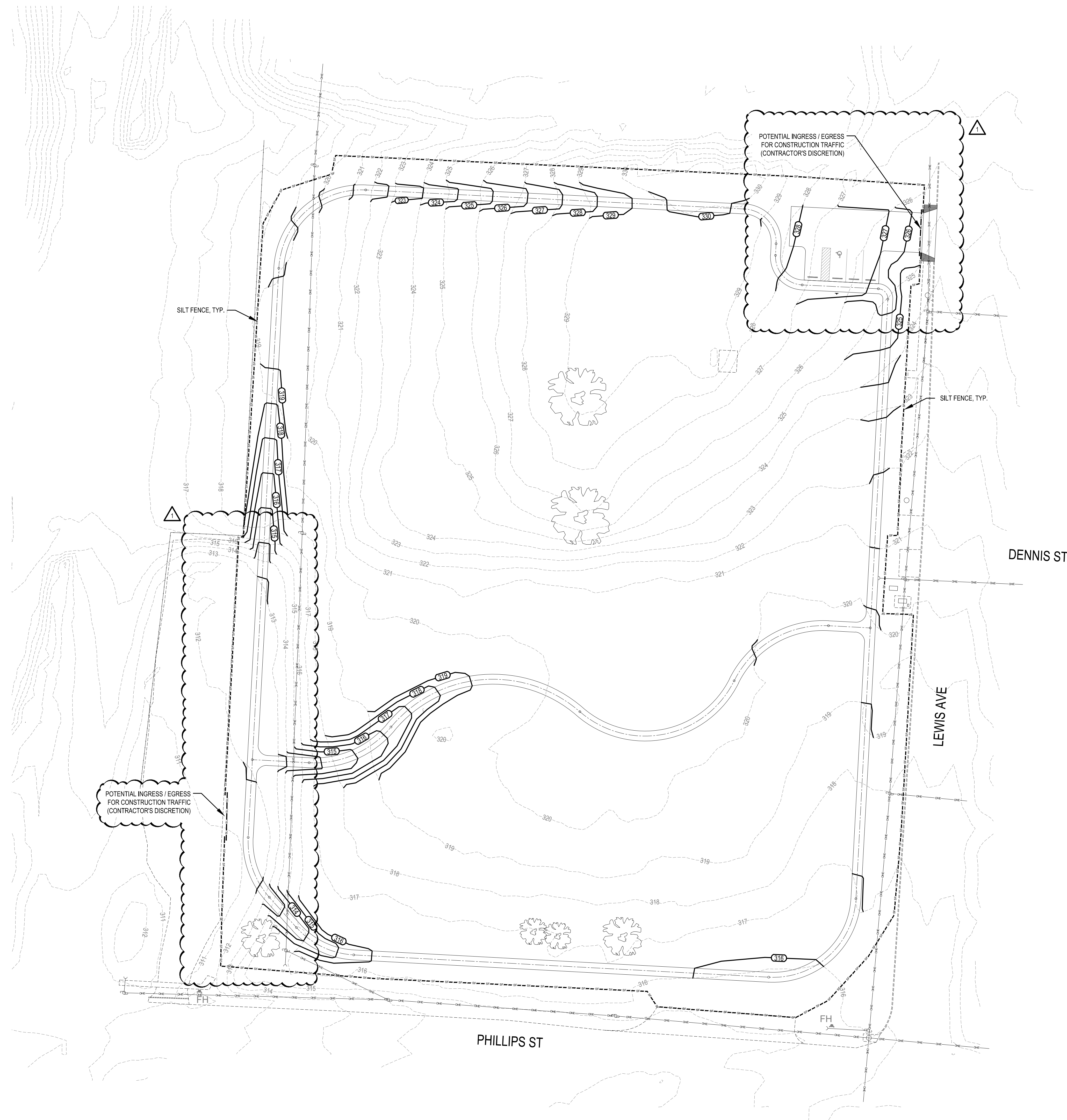
CITY OF DYERSBURG

JENNIE BELL
SCHOOL TRAIL

SITE GRADING PLAN

DRAWN BY: MW
 DESIGNED BY: BT
 CHECKED BY: TH
 Q.A.Q.C. BY: SSR

PHASE: CD
 DATE: 07/02/24
 DRAWING NO: C3.0



LEGEND	
	SILT FENCE
	SEDIMENT LOG

EROSION CONTROL NOTES

- PRE-CONSTRUCTION GROUND COVER SHALL NOT BE DESTROYED, REMOVED OR DISTURBED MORE THAN 14 DAYS PRIOR TO GRADING OR EARTH MOVING ACTIVITIES UNLESS THE AREA IS SUBSEQUENTLY TEMPORARILY OR PERMANENTLY STABILIZED.
- EPSC MEASURES MUST BE IN PLACE AND FUNCTIONAL BEFORE EARTH MOVING OPERATIONS BEGIN, AND MUST BE CONSTRUCTED AND MAINTAINED THROUGHOUT THE CONSTRUCTION PERIOD. TEMPORARY MEASURES MAY BE REMOVED AT THE BEGINNING OF THE WORKDAY, BUT MUST BE REPLACED AT THE END OF THE WORKDAY.
- SEDIMENT SHOULD BE REMOVED FROM SEDIMENT TRAPS, SILT FENCES, SEDIMENTATION BASINS, AND OTHER SEDIMENT CONTROLS WHEN DESIGN CAPACITY HAS BEEN REDUCED BY 50%.
- LITTER, CONSTRUCTION DEBRIS AND CONSTRUCTION CHEMICALS EXPOSED TO STORMWATER SHALL BE PICKED UP PRIOR TO STORM EVENTS OR BEFORE BEING CARRIED OFF OF THE SITE BY WIND SO THAT THEY DO NOT BECOME A POLLUTANT SOURCE FOR STORMWATER DISCHARGES. EROSION PREVENTION AND SEDIMENT CONTROL MATERIALS (E.G., SILT FENCE) SHOULD BE REMOVED OR OTHERWISE PREVENTED FROM BECOMING A POLLUTANT SOURCE FOR STORMWATER DISCHARGES.
- OFF-SITE VEHICLE TRACKING OF SEDIMENT AND THE GENERATION OF DUST SHALL BE MINIMIZED. A STABILIZED CONSTRUCTION ACCESS SHALL BE DESCRIBED AND IMPLEMENTED, AS NEEDED, TO REDUCE THE TRACKING OF MUD AND DIRT ONTO PUBLIC ROADS BY CONSTRUCTION VEHICLES.
- PERMITTEES SHALL MAINTAIN A RAIN GAUGE AND DAILY RAINFALL RECORDS AT THE SITE, OR USE A REFERENCE SITE FOR A RECORD OF DAILY PRECIPITATION.
- INSPECTIONS SHALL BE PERFORMED AT LEAST TWICE EVERY CALENDAR WEEK. INSPECTIONS SHALL BE PERFORMED AT LEAST 72 HOURS APART.
- TWICE WEEKLY INSPECTIONS CAN BE PERFORMED BY: A) A PERSON WITH A VALID CERTIFICATION FROM THE "FUNDAMENTALS OF EROSION PREVENTION AND SEDIMENT CONTROL LEVEL 1" COURSE, B) A LICENSED PROFESSIONAL ENGINEER OR LANDSCAPE ARCHITECT, C) A CERTIFIED PROFESSIONAL IN EROSION AND SEDIMENT CONTROL (CPESC) OR D) A PERSON WHO HAS SUCCESSFULLY COMPLETED THE "LEVEL 2 DESIGN PRINCIPLES FOR EROSION AND PREVENTION AND SEDIMENT CONTROL FOR CONSTRUCTION SITES" COURSE.
- MAINTENANCE NEEDS IDENTIFIED IN INSPECTIONS OR BY OTHER MEANS SHALL BE ACCOMPLISHED BEFORE THE NEXT STORM EVENT, BUT IN NO CASE MORE THAN SEVEN DAYS AFTER THE NEED IS IDENTIFIED.
- MUDDY WATER PUMPED FROM EXCAVATION AND WORK AREAS MUST BE HELD IN SETTLING BASINS, FILTERED OR CHEMICALLY TREATED PRIOR TO ITS DISCHARGE INTO SURFACE WATERS. WATER MUST BE DISCHARGED THROUGH A PIPE, GRASSED OR LINED CHANNEL OR OTHER EQUIVALENT MEANS SO THAT THE DISCHARGE DOES NOT CAUSE EROSION AND SEDIMENTATION. DISCHARGED WATER MUST NOT CAUSE AN OBJECTIONABLE COLOR CONTRAST WITH THE RECEIVING STREAM.
- STABILIZATION MEASURES SHALL BE INITIATED AS SOON AS POSSIBLE IN PORTIONS OF THE SITE WHERE CONSTRUCTION ACTIVITIES HAVE TEMPORARILY OR PERMANENTLY CEASED. TEMPORARY OR PERMANENT SOIL STABILIZATION AT THE CONSTRUCTION SITE MUST BE COMPLETED NO LATER THAN 14 DAYS AFTER THE CONSTRUCTION ACTIVITY IN THAT PORTION OF THE SITE HAS TEMPORARILY OR PERMANENTLY CEASED.
- THE FOLLOWING RECORDS SHALL BE MAINTAINED ON OR NEAR THE SITE: THE DATE WHEN MAJOR GRADING ACTIVITIES OCCUR; THE DATES WHEN CONSTRUCTION ACTIVITIES TEMPORARILY OR PERMANENTLY CEASE ON A PORTION OF THE SITE; THE DATES WHEN STABILIZATION MEASURES ARE INITIATED; INSPECTION RECORDS AND RAINFALL RECORDS.

UTILITY NOTE: LOCATION OF EXISTING UNDERGROUND UTILITIES ARE APPROXIMATE AND NOT NECESSARILY THE SAME. THE CONTRACTOR SHALL BE RESPONSIBLE FOR CONTACTING THE APPROPRIATE UTILITY COMPANY TO DETERMINE THE EXACT LOCATION OF ALL UTILITIES AND UNDERGROUND STRUCTURES PRIOR TO THE INITIATION OF ANY CONSTRUCTION. CONTRACTOR SHALL ASSUME FULL RESPONSIBILITY FOR DAMAGE TO ANY UTILITIES ENCOUNTERED WITHIN CONSTRUCTION LIMITS. CALL 811 FOR UTILITY LOCATIONS.

SSR Smith Seckman Reid, Inc.
 2650 Thousand Oaks Boulevard,
 Suite 4200
 Memphis, TN 38118
 (901) 683-3900
 FAX: (901) 683-3990
 www.ssr-inc.com
 SSR PROJECT #24410470



No.	Date	Description
1	7/16/24	ADDENDUM #1



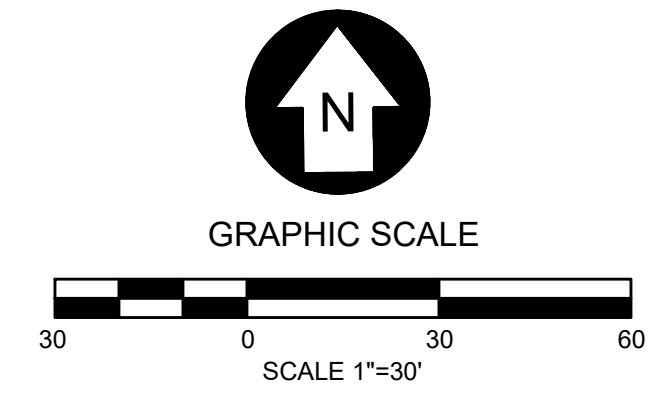
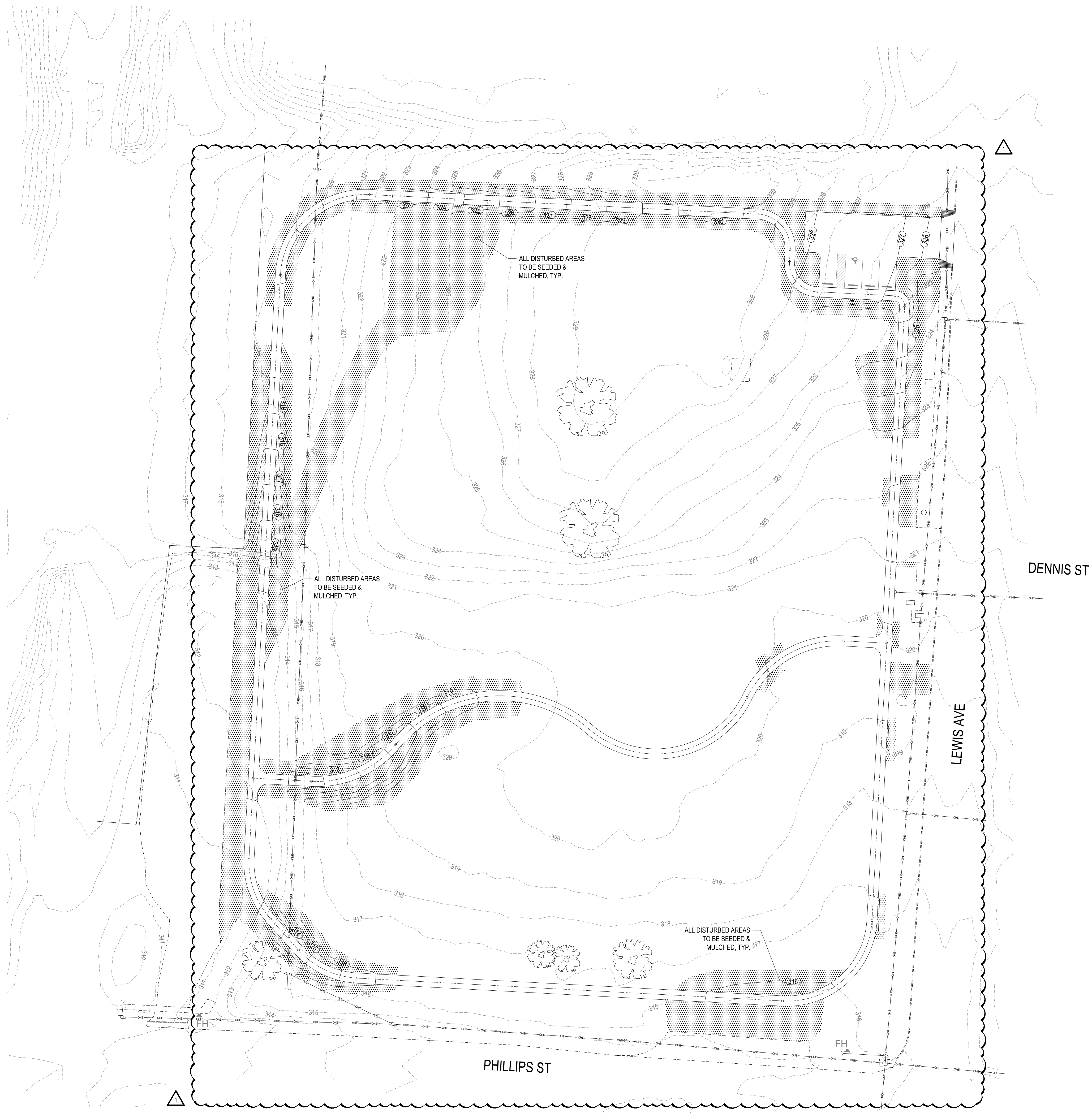
CITY OF DYERSBURG

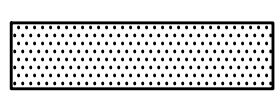
JENNIE BELL SCHOOL TRAIL

EROSION CONTROL PLAN PHASE 1

DRAWN BY: MW
 DESIGNED BY: BT
 CHECKED BY: TH
 Q.A.Q.C. BY: SSR

PHASE:	CD	DRAWING NO.:	C4.0
DATE:	07/02/24		



LEGEND	
	SEED & MULCH STABILIZATION (BERMUDA SEED & STRAW)

EROSION CONTROL NOTES

- PRE-CONSTRUCTION GROUND COVER SHALL NOT BE DESTROYED, REMOVED OR DISTURBED MORE THAN 14 DAYS PRIOR TO GRADING OR EARTH MOVING ACTIVITIES UNLESS THE AREA IS SUBSEQUENTLY TEMPORARILY OR PERMANENTLY STABILIZED.
- EPSC MEASURES MUST BE IN PLACE AND FUNCTIONAL BEFORE EARTH MOVING OPERATIONS BEGIN, AND MUST BE CONSTRUCTED AND MAINTAINED THROUGHOUT THE CONSTRUCTION PERIOD. TEMPORARY MEASURES MAY BE REMOVED AT THE BEGINNING OF THE WORKDAY, BUT MUST BE REPLACED AT THE END OF THE WORKDAY.
- SEDIMENT SHOULD BE REMOVED FROM SEDIMENT TRAPS, SILT FENCES, SEDIMENTATION BASINS, AND OTHER SEDIMENT CONTROLS WHEN DESIGN CAPACITY HAS BEEN REDUCED BY 50%.
- LITTER, CONSTRUCTION DEBRIS AND CONSTRUCTION CHEMICALS EXPOSED TO STORMWATER SHALL BE PICKED UP PRIOR TO STORM EVENTS OR BEFORE BEING CARRIED OFF OF THE SITE BY WIND SO THAT THEY DO NOT BECOME A POLLUTANT SOURCE FOR STORMWATER DISCHARGES. EROSION PREVENTION AND SEDIMENT CONTROL MATERIALS (E.G., SILT FENCE) SHOULD BE REMOVED OR OTHERWISE PREVENTED FROM BECOMING A POLLUTANT SOURCE FOR STORMWATER DISCHARGES.
- OFF-SITE VEHICLE TRACKING OF SEDIMENT AND THE GENERATION OF DUST SHALL BE MINIMIZED. A STABILIZED CONSTRUCTION ACCESS SHALL BE DESCRIBED AND IMPLEMENTED, AS NEEDED, TO REDUCE THE TRACKING OF MUD AND DIRT ONTO PUBLIC ROADS BY CONSTRUCTION VEHICLES.
- PERMITTEES SHALL MAINTAIN A RAIN GAUGE AND DAILY RAINFALL RECORDS AT THE SITE, OR USE A REFERENCE SITE FOR A RECORD OF DAILY PRECIPITATION.
- INSPECTIONS SHALL BE PERFORMED AT LEAST TWICE EVERY CALENDAR WEEK. INSPECTIONS SHALL BE PERFORMED AT LEAST 72 HOURS APART.
- TWICE WEEKLY INSPECTIONS CAN BE PERFORMED BY: A) A PERSON WITH A VALID CERTIFICATION FROM THE "FUNDAMENTALS OF EROSION PREVENTION AND SEDIMENT CONTROL LEVEL 1" COURSE, B) A LICENSED PROFESSIONAL ENGINEER OR LANDSCAPE ARCHITECT, C) A CERTIFIED PROFESSIONAL IN EROSION AND SEDIMENT CONTROL (CPESC) OR D) A PERSON WHO HAS SUCCESSFULLY COMPLETED THE "LEVEL 2 DESIGN PRINCIPLES FOR EROSION AND PREVENTION AND SEDIMENT CONTROL FOR CONSTRUCTION SITES" COURSE.
- MAINTENANCE NEEDS IDENTIFIED IN INSPECTIONS OR BY OTHER MEANS SHALL BE ACCOMPLISHED BEFORE THE NEXT STORM EVENT, BUT IN NO CASE MORE THAN SEVEN DAYS AFTER THE NEED IS IDENTIFIED.
- MUDDY WATER PUMPED FROM EXCAVATION AND WORK AREAS MUST BE HELD IN SETTLING BASINS, FILTERED OR CHEMICALLY TREATED PRIOR TO ITS DISCHARGE INTO SURFACE WATERS. WATER MUST BE DISCHARGED THROUGH A PIPE, GRASSED OR LINED CHANNEL OR OTHER EQUIVALENT MEANS SO THAT THE DISCHARGE DOES NOT CAUSE EROSION AND SEDIMENTATION. DISCHARGED WATER MUST NOT CAUSE AN OBJECTIONABLE COLOR CONTRAST WITH THE RECEIVING STREAM.
- STABILIZATION MEASURES SHALL BE INITIATED AS SOON AS POSSIBLE IN PORTIONS OF THE SITE WHERE CONSTRUCTION ACTIVITIES HAVE TEMPORARILY OR PERMANENTLY CEASED. TEMPORARY OR PERMANENT SOIL STABILIZATION AT THE CONSTRUCTION SITE MUST BE COMPLETED NO LATER THAN 14 DAYS AFTER THE CONSTRUCTION ACTIVITY IN THAT PORTION OF THE SITE HAS TEMPORARILY OR PERMANENTLY CEASED.
- THE FOLLOWING RECORDS SHALL BE MAINTAINED ON OR NEAR THE SITE: THE DATE WHEN MAJOR GRADING ACTIVITIES OCCUR; THE DATES WHEN CONSTRUCTION ACTIVITIES TEMPORARILY OR PERMANENTLY CEASE ON A PORTION OF THE SITE; THE DATES WHEN STABILIZATION MEASURES ARE INITIATED; INSPECTION RECORDS AND RAINFALL RECORDS.

UTILITY NOTE: LOCATION OF EXISTING UNDERGROUND UTILITIES ARE APPROXIMATE AND NOT NECESSARILY THE SAME. THE CONTRACTOR SHALL BE RESPONSIBLE FOR CONTACTING THE APPROPRIATE UTILITY COMPANY TO DETERMINE THE EXACT LOCATION OF ALL UTILITIES AND UNDERGROUND STRUCTURES PRIOR TO THE INITIATION OF ANY CONSTRUCTION. CONTRACTOR SHALL ASSUME FULL RESPONSIBILITY FOR DAMAGE TO ANY UTILITIES ENCOUNTERED WITHIN CONSTRUCTION LIMITS. CALL 811 FOR UTILITY LOCATIONS.

SSR Smith Seckman Reid, Inc.
 2650 Thousand Oaks Boulevard,
 Suite 4200
 Memphis, TN 38118
 (901) 683-3900
 FAX: (901) 683-3990
 www.ssr-inc.com
 SSR PROJECT #24410470



No.	Date	Description
1	7/16/24	ADDENDUM #1



CITY OF DYERSBURG

JENNIE BELL SCHOOL TRAIL

EROSION CONTROL PLAN PHASE 2

DRAWN BY: MW
 DESIGNED BY: BT
 CHECKED BY: TH
 Q.A.Q.C. BY: SSR

PHASE:	CD	DRAWING NO.:	
DATE:	07/02/24		C4.1



No. Date Description

No.	Date	Description
1	7/16/24	ADDENDUM #1



CITY OF DYERSBURG

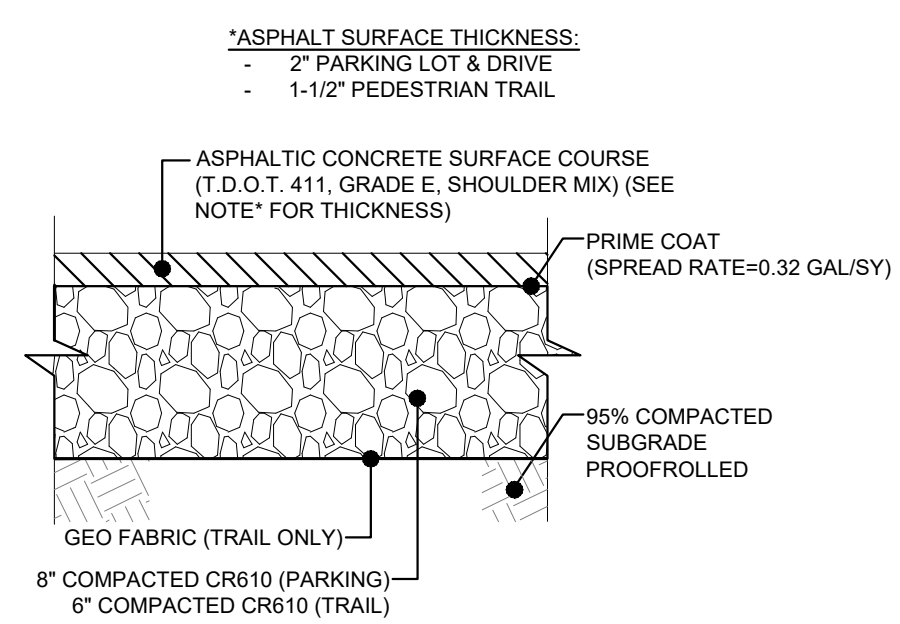
JENNIE BELL SCHOOL TRAIL

CONSTRUCTION DETAILS

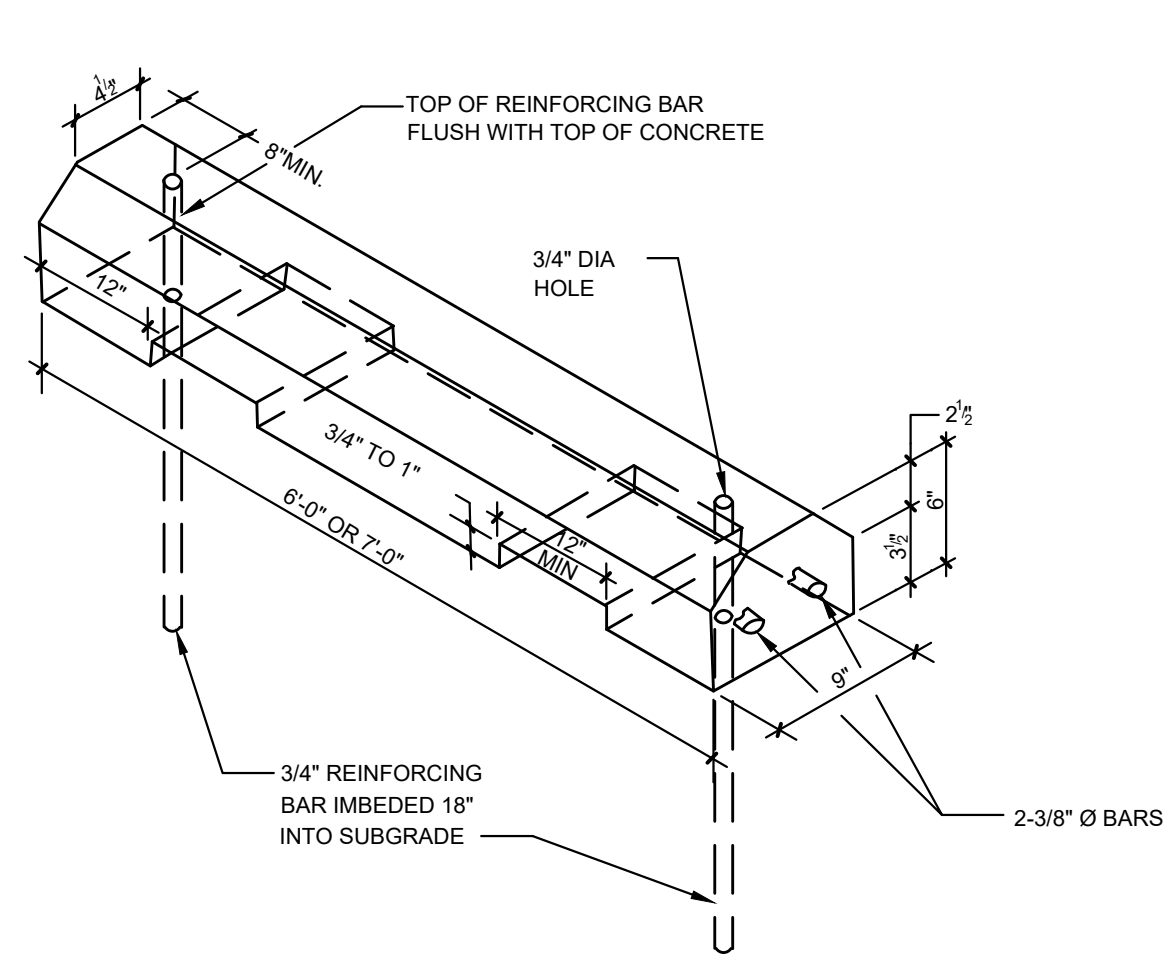
DRAWN BY: MW
DESIGNED BY: BT
CHECKED BY: TH
Q.A.Q.C. BY: SSR

PHASE: CD DRAWING NO:
DATE: 07/02/24 C9.0

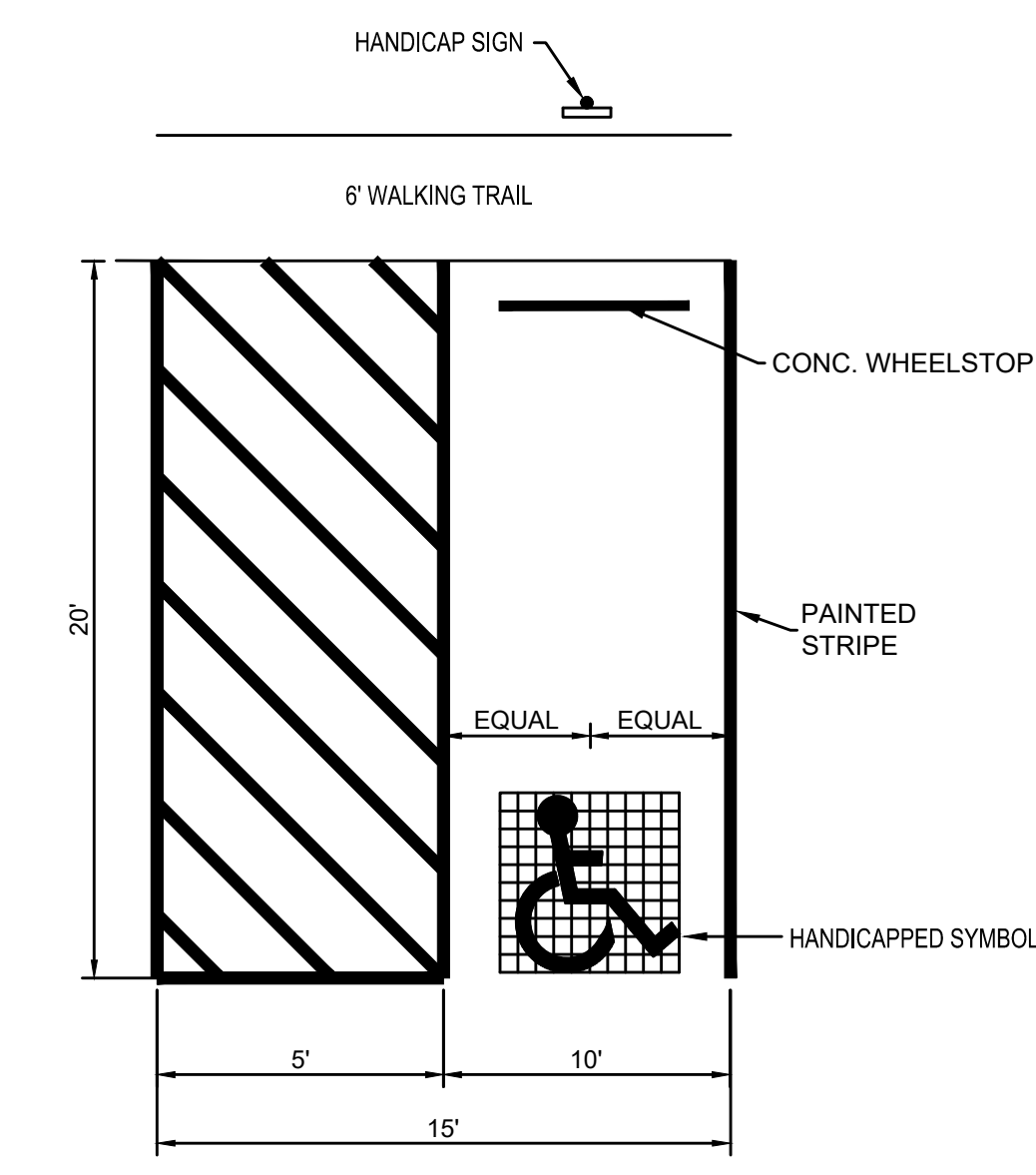
NOTE: ALL CONSTRUCTION ACTIVITIES SHALL BE COMPLETED WITH FULL COMPLIANCE OF THE AMERICANS WITH DISABILITIES ACT ACCESSIBILITY STANDARDS AS WELL AS ANY ADDITIONAL ACCESSIBILITY STANDARDS IDENTIFIED AND ACCEPTED LOCALLY AND/OR ON THE STATE LEVEL.



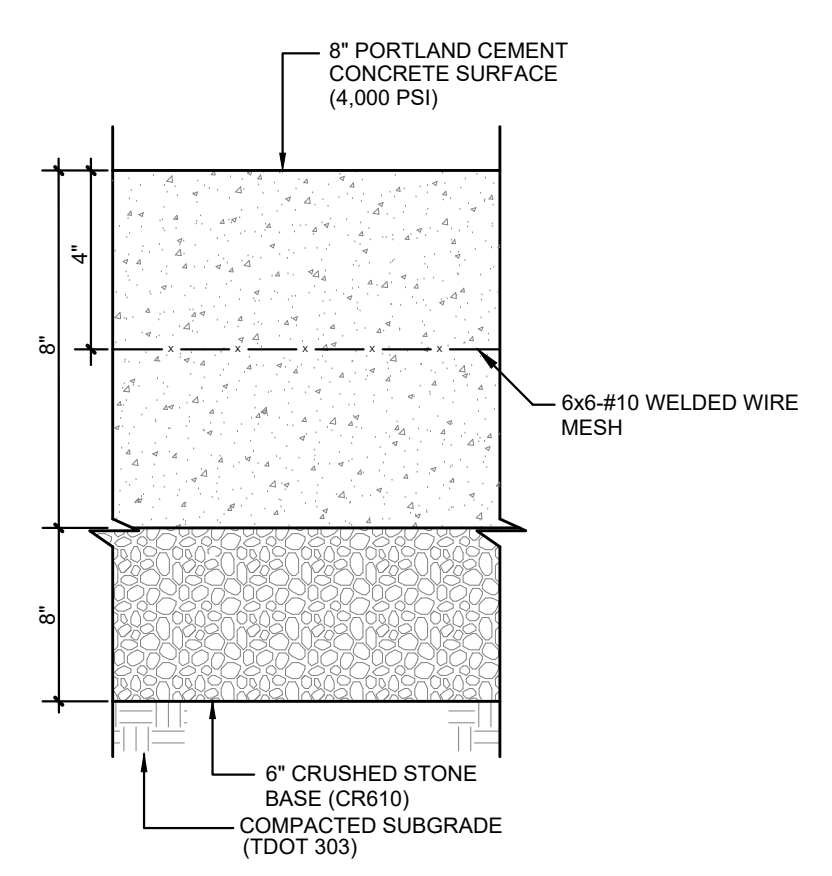
1 ASPHALT PAVEMENT
C9.0 NOT TO SCALE



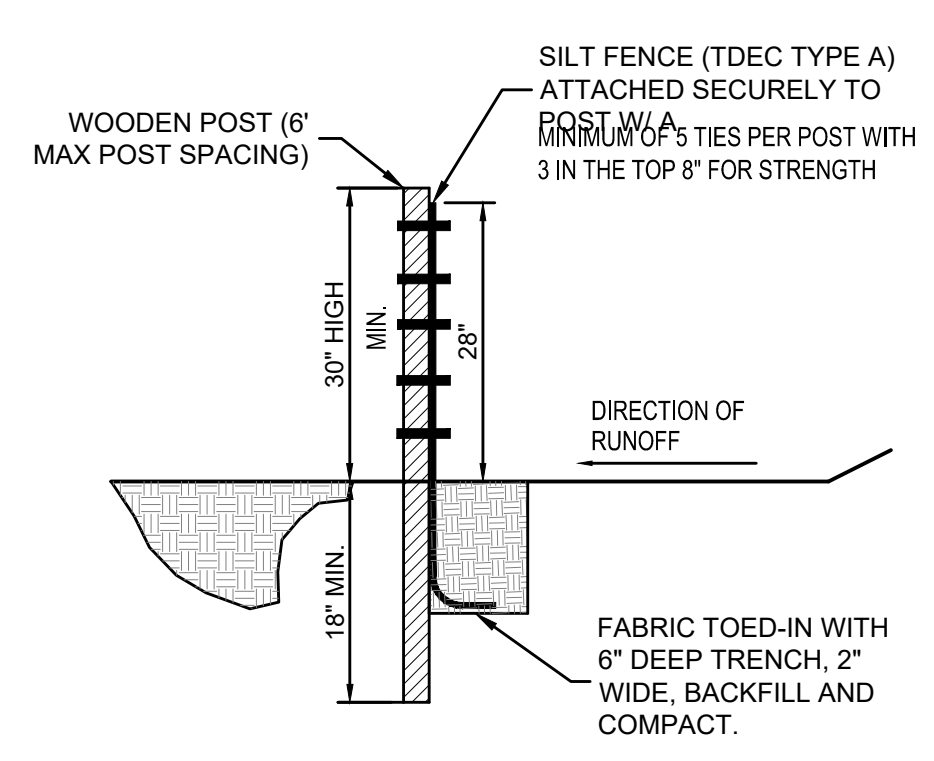
2 WHEEL STOP (PRECAST CONCRETE)
C9.0 NOT TO SCALE



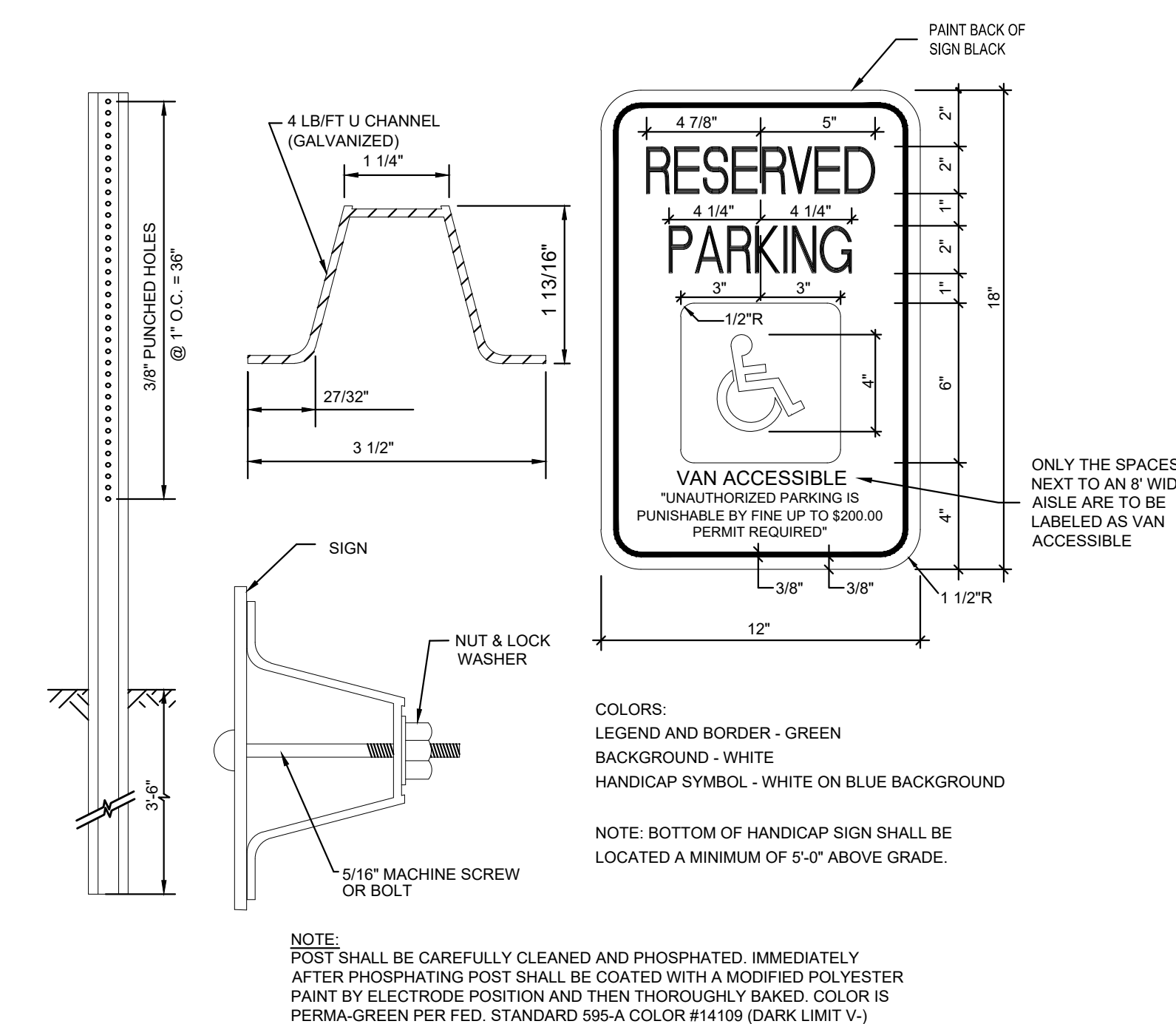
3 HANDICAP PARKING STRIPING
C9.0 NOT TO SCALE



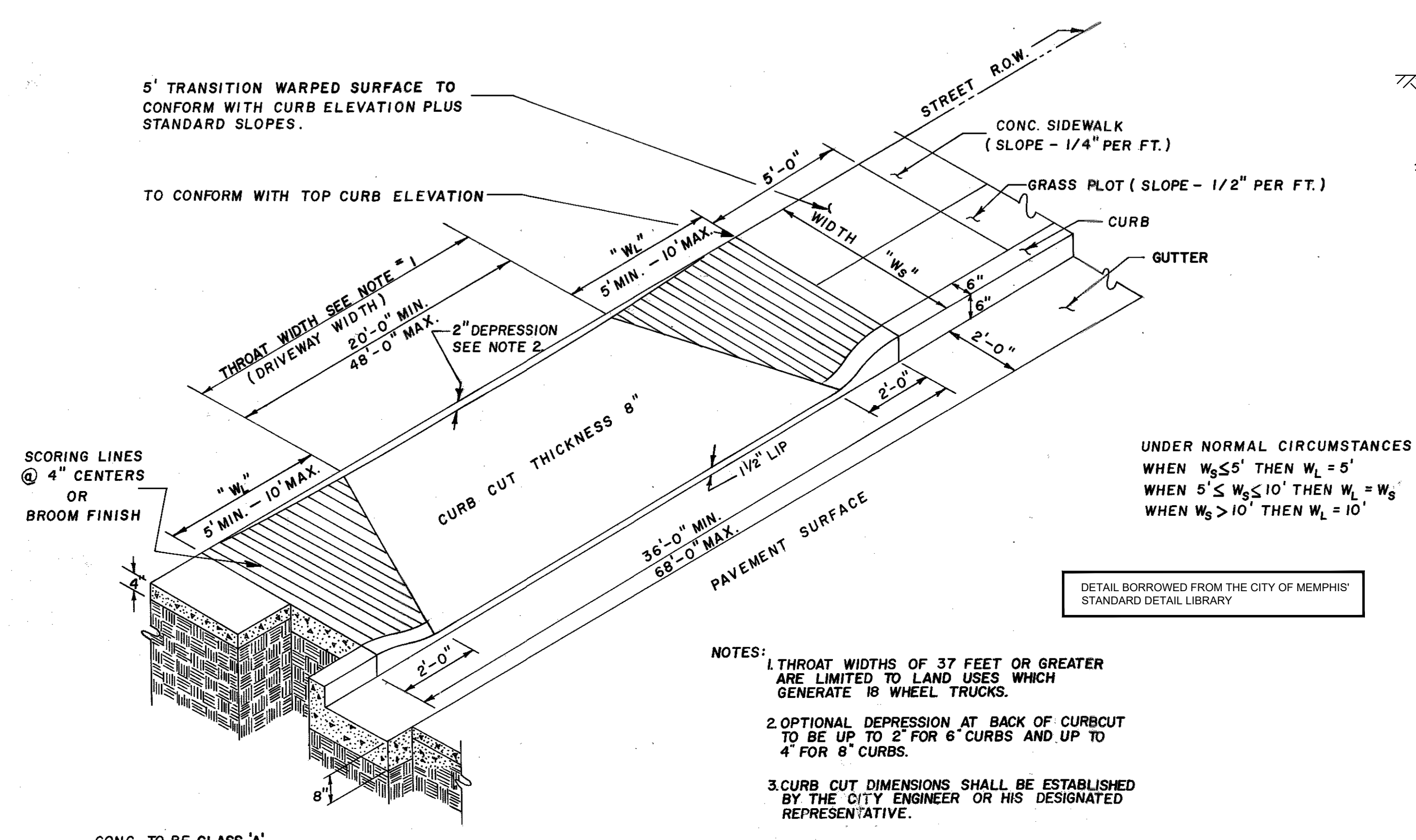
6 8" CONC. PAVEMENT
C9.0 NOT TO SCALE



5 STANDARD TEMPORARY SILT FENCE
C9.0 NOT TO SCALE



4 HANDICAP PARKING SIGN
C9.0 NOT TO SCALE



7 STANDARD COMMERCIAL CURB CUT DETAIL
C9.0 NOT TO SCALE

NOTES:
1. THROAT WIDTHS OF 37 FEET OR GREATER ARE LIMITED TO LAND USES WHICH GENERATE 18 WHEEL TRUCKS.
2. OPTIONAL DEPRESSION AT BACK OF CURB CUT TO BE UP TO 2" FOR 6" CURBS AND UP TO 4" FOR 8" CURBS.
3. CURB CUT DIMENSIONS SHALL BE ESTABLISHED BY THE CITY ENGINEER OR HIS DESIGNATED REPRESENTATIVE.

UNDER NORMAL CIRCUMSTANCES
WHEN $W_6 \leq 5'$ THEN $W_L = 5'$
WHEN $5' < W_6 \leq 10'$ THEN $W_L = W_6$
WHEN $W_6 > 10'$ THEN $W_L = 10'$

DETAIL BORROWED FROM THE CITY OF MEMPHIS' STANDARD DETAIL LIBRARY