



# Tennessee Breast & Cervical Screening Program

Program Overview

# Program Leadership



**Elizabeth Berardi, MPH, BSN, RN**

Cancer Programs Administrator

TBCSP Director | TCCCP | PE

[Elizabeth.Berardi@tn.gov](mailto:Elizabeth.Berardi@tn.gov)

629-230-8561



**Maria Campos Araujo, BS**

TBCSP Manager

[Maria.CamposAraujo@tn.gov](mailto:Maria.CamposAraujo@tn.gov)

615-927-2692

# Other Important Team Members

- **Section Chief** - Crissy Hartsfield
- **Clinical Consultant** - Dr. Hannah Dudney
- **Health Equity Consultant** – Dr. Hector Carrasco
- **Epidemiologist/Data Manager** – Audrey Stach
- **Cancer Partnerships Director** – Roberta White
- **PE Director** – Michelle Fortney
- **WISEWOMAN/TWWP Director** – Shelby Mitchell
- **Admins**
  - Jon Jobe
  - Gwendin Berger
  - Denise Whitson
  - Carrie Rogers
  - Amanda Ridgway
- **Evaluators** – Dr. Lucy Spalluto/Vanderbilt/Elevate

# Objectives

- Provide a brief overview of TBCSP
- Define patient eligibility
- Provide an overview of TBCSP efforts in addressing health disparities
- Review program meetings, staff resources, and common health observances
- Briefly highlight WISEWOMAN



# TBCSP Overview

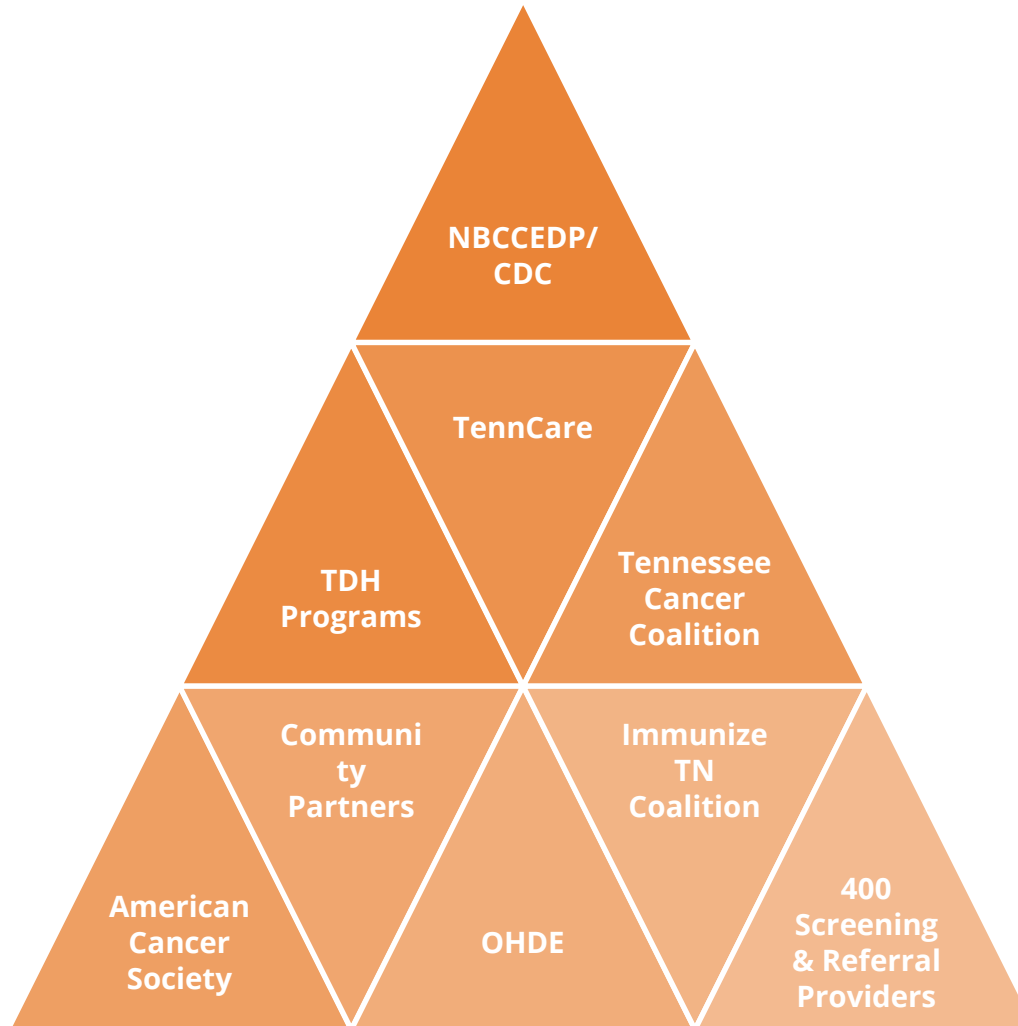
# Introduction & Mission

**The Tennessee Breast and Cervical Screening Program (TBCSP) provides breast and cervical cancer screening to eligible women, and diagnostic follow-up tests for eligible women and men with abnormal findings.**

- Improve screening rates and increase early detection
- Decrease morbidity and mortality
- Deliver timely, high-quality services
- Decrease health disparities
- Initiate health system interventions



# Key Partners



# Services

Wellness exams including clinical breast exams and cervical cancer screenings (pap/HPV)

Screening Mammograms

Diagnostic Services for breast for both men and women

Diagnostic Services for abnormal pap smears

Patient Navigation along the continuum of care

Community Education and Outreach



# TBCSP FY23 Factsheet



**16,714 women served**

Among more than **82,400** eligible women in Tennessee, almost **20%** received services through TBCSP



**18% Increase** in Women Served Compared to FY22

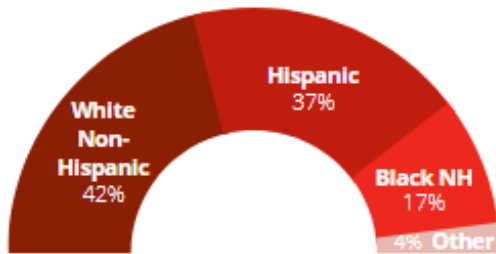


Over **14,600** breast services provided



**164** breast cancers diagnosed

Routine Breast Screenings by Race/Ethnicity



Number of Women Screened Compared to FY22



**45% Increase** in Hispanic Women



**27% Increase** in Black Women

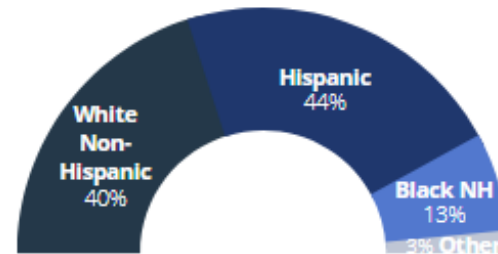


Over **5,700** cervical services provided



**157** cervical pre-cancers and cancers diagnosed

Routine Cervical Screenings by Race/Ethnicity



Number of Women Screened Compared to FY22



**47% Increase** in Hispanic Women



**24% Increase** in Black Women

**51** men received breast services in FY2023.



Men are eligible for diagnostic breast services if they meet the other program eligibility requirements and can be enrolled in TennCare if breast cancer is diagnosed.

# Screening Providers Responsibility





Eligibility

# General Eligibility

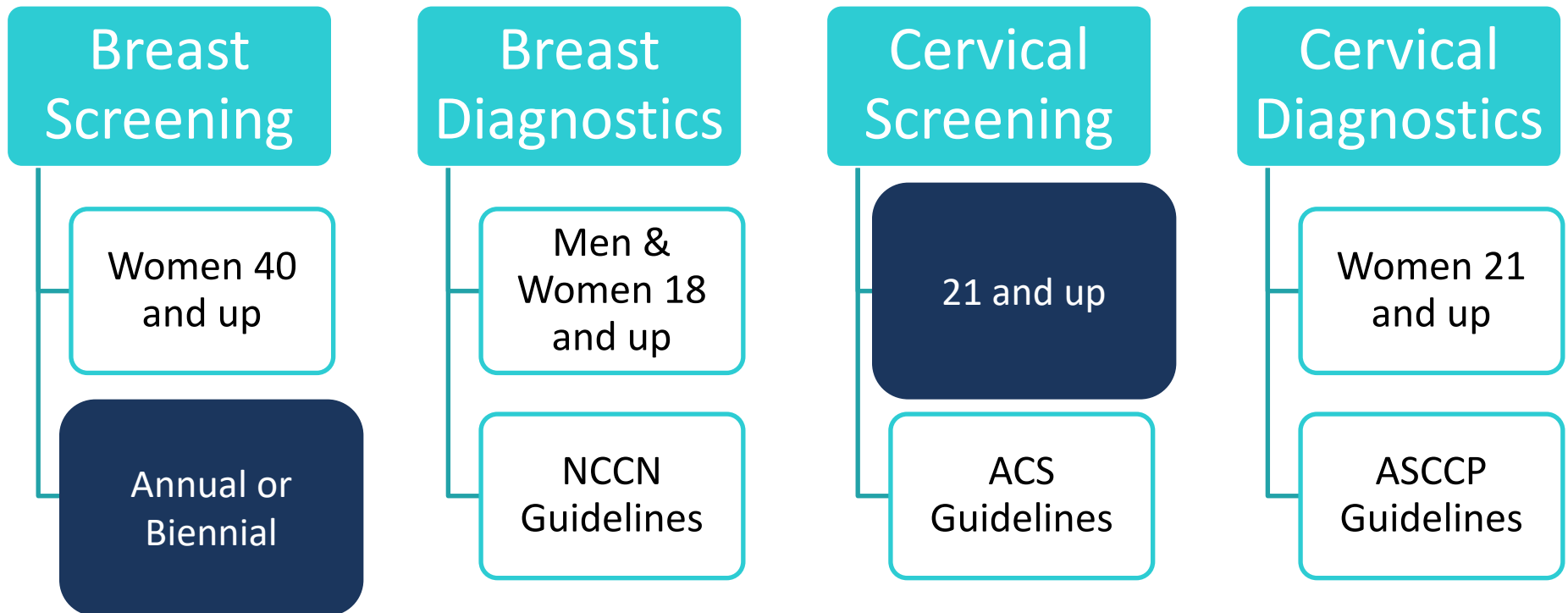
- Low income (250% FPL)
  - Updated annually
- Uninsured, Underinsured
- Tennessee Resident
- Age

## 2024 Poverty Guidelines

Household/ Family Size	Per Year			
	100%	150%	200%	250%
1	\$15,060	\$22,590	\$30,120	\$37,650
2	\$20,440	\$30,660	\$40,880	\$51,100
3	\$25,820	\$38,730	\$51,640	\$64,550
4	\$31,200	\$46,800	\$62,400	\$78,000
5	\$36,580	\$54,870	\$73,160	\$91,450
6	\$41,960	\$62,940	\$83,920	\$104,900
7	\$47,340	\$71,010	\$94,680	\$118,350
8	\$52,720	\$79,080	\$105,440	\$131,800
9	\$55,700	\$83,550	\$111,400	\$139,250
10	\$61,080	\$91,620	\$122,160	\$152,700
11	\$66,460	\$99,690	\$132,920	\$166,150
12	\$71,840	\$107,760	\$143,680	\$179,600
13	\$77,220	\$115,830	\$154,440	\$193,050
14	\$82,600	\$123,900	\$165,200	\$206,500

Household/	Per Month			
	100%	150%	200%	250%

# Clinical Eligibility





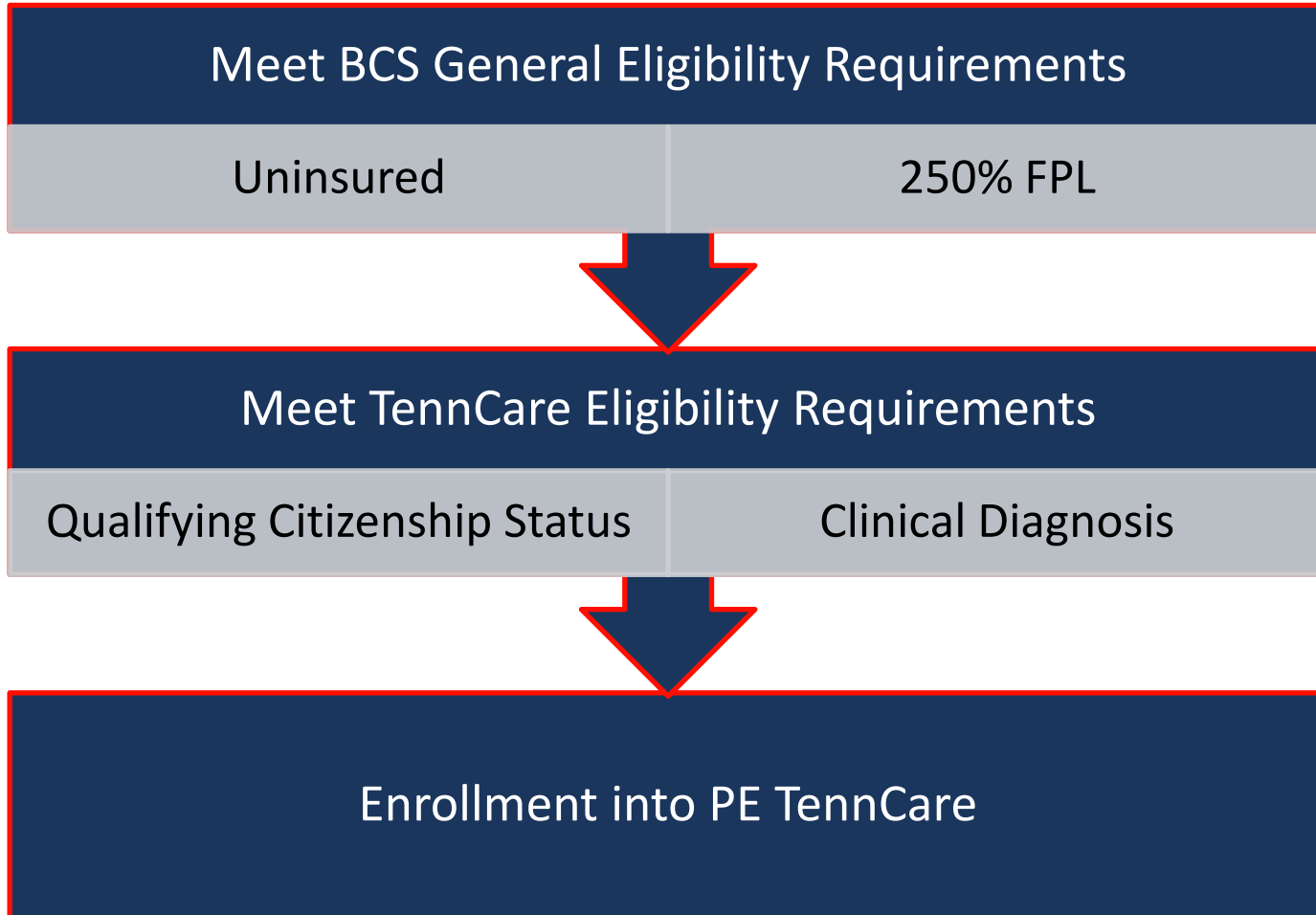
**TennCare**

# TennCare Presumptive Eligibility (PE)

- TennCare is the state of Tennessee's managed Medicaid program
- TennCare allows the TBCSP to screen and provide immediate insurance coverage to qualified individuals and assist these patients in completing the regular TennCare application process
- This process is called ***Presumptive Eligibility***



# TBCSP Presumptive Eligibility Requirements







# Addressing Health Disparities

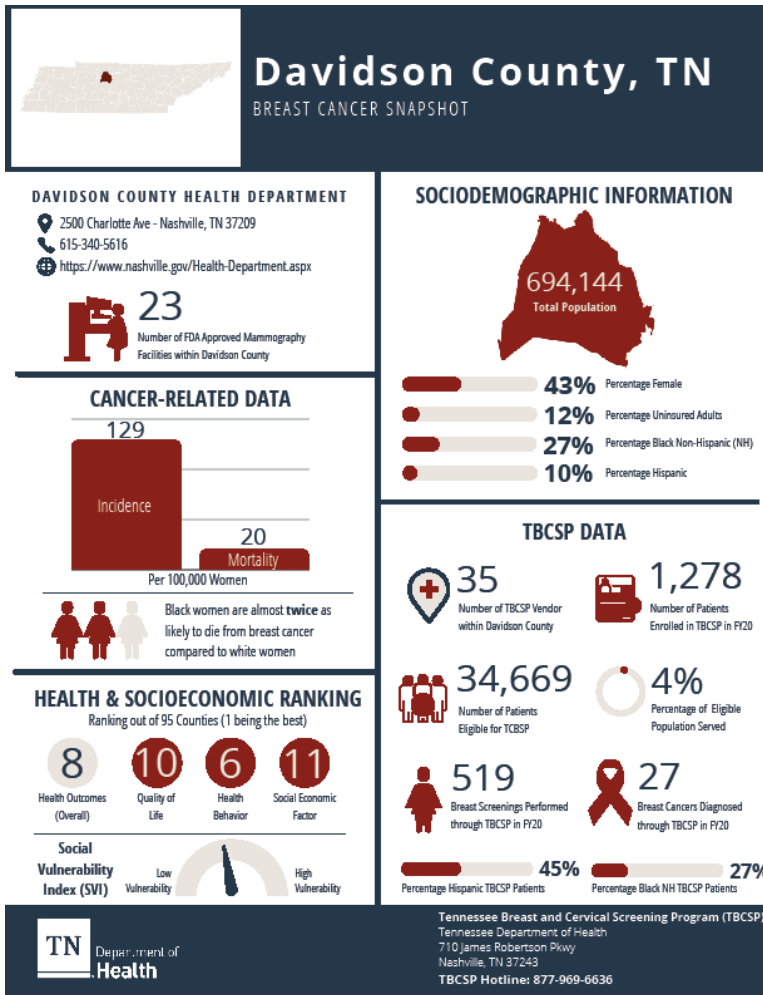
# Navigation

- Navigation is provided to help identify and overcome barriers
  - “Above and beyond”
  - Outside normal notification and scheduling
- Includes education and support, tracking and follow-up

# Patient Qualitative Study

- Gain insight from patients participating in TBCSP
  - Understand processes in clinical settings from patient's perspective
  - Gain patient feedback on services
- Help support the development of tailored interventions to improve the program
- Expanding study to reach Spanish speaking participants

# Breast Cancer Disparities County Snapshots



- Breast Cancer Disparities (tn.gov)
- In the process of being updated

# PinkLink and FAITH initiative

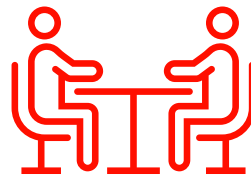
- PinkLink
  - Pilot project in the South Central region to increase outreach within rural and minority communities
  - Lead by MPH Students
- FAITH (For All In This House)
  - Train-the-trainer initiative to connect with congregation leaders in Black communities
  - Goal – further expand reach in Black communities



# Meetings

# Regular Meetings

- Central Office
  - TBCSP Monthly 'Pulse' Meeting
  - RWH Cancer Check-In (Crissy)
  - RWH Monday Momentum Meeting (Crissy)
  - TBCSP Weekly Admin Meeting
- Field-Based
  - TBCSP Monthly Meeting
  - TBCSP WHN Bi-Monthly Meeting





# Health Observances



# Health Observances

- **January** – Cervical Cancer Awareness Month
- **March** – HPV Awareness Day (date varies)
- **May** – Women’s Health Week (dates vary)
- **October** – Breast Cancer Awareness Month
- **November** – Lung Cancer Awareness Month



# Awareness Campaigns

- January – Cervical Cancer Awareness Month
  - Website and toolkit: [www.tn.gov/cervicalcancer](http://www.tn.gov/cervicalcancer)
- May – Women’s Health Week
  - Website and toolkit: [Women's Health Week \(tn.gov\)](http://Women's Health Week (tn.gov))
- October/November – Breast & Lung Cancer Awareness Months (Pink & Pearl Campaign)
  - Website and toolkit: [www.tn.gov/pinkandpearl](http://www.tn.gov/pinkandpearl)



# Resources

# Available Resources

- Website
  - [www.tn.gov/tbcsp](http://www.tn.gov/tbcsp)
  - [www.tn.gov/health/tbcspenespanol](http://www.tn.gov/health/tbcspenespanol)



**WISEWOMAN**

# Program Under Development

- **Well-Integrated Screening and Evaluation for WOMen Across the Nation (WISEWOMAN)**
  - TN WISEWOMAN Program (TWWP)
  - [WISEWOMAN Home | cdc.gov](https://www.cdc.gov/wisewoman/)
- Adds cardiovascular disease (CVD) risk assessment, screening, treatment, and referral for health behavior support services to eligible TBCSP-enrolled patients.
  - Women 35-64
  - Wellness exams paid by TBCSP, bloodwork paid through TWWP
- Program Manager – Shelby Mitchell
- Funded \$550,000 annually 2023-2028
- PY runs October - September



# Questions?





Maria Campos Araujo  
[maria.camposaraujo@tn.gov](mailto:maria.camposaraujo@tn.gov)  
615-927-2692