



Health Council Community of Practice (CoP)

Introductions

- Welcome!
- Please type in the chat:
 - Name
 - Your title
 - Organization
 - County
 - Member of Health Council?
 - Yes/No

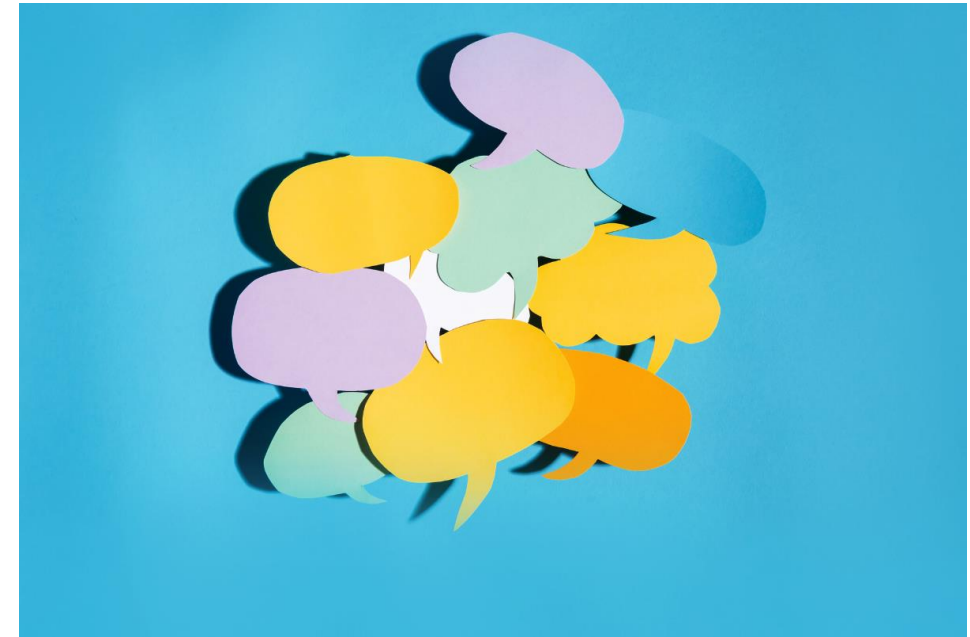
Hello
my name is

Frannie Tyree
Holiday Zen Master
Tyree Household
Davidson Co
Yes



Agenda

- Introductions
- Community of Practice Overview
- Health Council Spotlight
 - Cocke County
- Breakout groups
 - Networking & Discussion
- Share-out
 - Opportunity to share tornado relief services
- Q&A



What is a Community of Practice?

Groups of people who **share a concern** or a passion for something they do and **learn how to do it better** as they **interact regularly**.



Étienne Wenger

Purpose of the CoP

- **Educate** by collecting and sharing information – from experts as well as from peers
- **Support** by organizing peer-to-peer interactions and collaboration
- **Cultivate** by assisting groups to start and sustain their learning
- **Encourage** by promoting the work of members through discussion and sharing
- **Integrate** by encouraging members to use their new knowledge for real change in their own work

Health Council Spotlight: Cocke County

Garden of Eat'N Community Teaching Garden



Ground Breaking: March 1, 2023

Health Council Spotlight: Cocke County

Garden of Eat'N Community Teaching Garden

A place where citizens from all portions of Cocke County can:

- Improve mental and physical well-being
- Engage community members with agriculture
- Provide education related healthy eating and gardening skills
- Increase availability of fruit and vegetables to populations in need
- Beautify Newport
- Encourage citizens to be engaged within the community



Health Council Spotlight: Cocke County



- 10 Raised Beds
- 1 Pizza Garden
- 1 Native Pollinator Garden
- 2 Display Beds
- Learning trail
- 4 Picnic tables
- Little Free Garden Library
- First-Aid and Safety Station

- Health Council Representatives (from left to right):
- Cocke County Health Department Gary Brewer and Emma Davis, Cocke County Health Council Chair Bettye Carver, Cocke County Schools Dottie Ford, Cocke County Cradle to Career Coalition Jennifer Ellison, WestCare Tennessee Inc. Shandi Hill, Cocke County Schools Diana Samples, Creekside Behavioral Health Lindsay McNabb, WestCare Tennessee Inc Courtney Williams, Keep Cocke County Beautiful Airika Actouka, and WestCare Tennessee Inc. Madison Porterfield

Health Council Spotlight: Cocke County

Garden of Eat'N Community Teaching Garden

Drivers of success:

- Universal community support
- Timeline established early in the project
- Mutual goals defined as a group
- Dedicated leadership (internally to the project and externally in the community)
- Team of organizations and individuals committed to the garden's success
- Data supporting this project via multiple community surveys including the Cocke County Cradle to Career Coalition Community Food Assessment and the Cocke County Health Council Community Health Assessment (2022)
- State of Tennessee Project Diabetes Grant – Category B (\$30,000 over 2 years)
- Additional fiscal support by Keep Cocke County Beautiful (\$3,000) and Cocke County Cradle to Career Coalition (\$1,500)



Health Council Spotlight: Cocke County



Land Use Partners:

Newport Housing Authority – Executive Director Walter Cole
Cocke County Government – Cocke County Mayor Rob Mathis

Collaborative Partners:

Cocke County Health Department
UT/TSU Extension Office – Cocke County
Cocke County Cradle to Career Coalition
Keep Cocke County Beautiful
WestCare Tennessee Inc.
Cocke County Health Council

Fiscal Partners:

Cocke County Government
Cocke County Health Council
Cocke County Cradle to Career Coalition
Cocke County Health Department
State of Tennessee – Project Diabetes Grant
Keep Cocke County Beautiful

Water Partner:

Boys & Girls Club of Dumplin Valley – Newport Club

Health Council Spotlight: Cocke County

Garden of Eat'N Community Teaching Garden Challenges

- Fiscal Sponsorship
- Land Acquisition and Permission
- Participation & Distribution



Health Council Spotlight: Cocke County

Garden of Eat'N Community Teaching Garden

- Fiscal Sponsorship
 - Identify which agency can commit to reimbursable grants, non-reimbursable grants, and potential donations
 - Clarify who has ability to purchase items
 - For transparency, always expend funds with another collaborative partner and clear permission from collaborative group
 - Keep open lines of communication between fiscal entities: purchaser (UT/TSU Extension - Cocke County), fiscal agencies (Cocke County Government and Cocke County Health Department), and grant agency (State of Tennessee)
 - Sustainability: future funding needs and opportunities

Health Council Spotlight: Cocke County

- Land Acquisition and Permission

Location	Land-Use Permission	Partner Access	Sun Exposure	Water	Public Access	Land Condition	Parking	Security	Restrooms	Storage	Other
1. Greenway start	Newport Parks and Rec	Very close to partners	Full-Sun	Add a frost-free tap, use county water from the annex	Open to the public	Flat	Use parking at the Annex	Security may be an issue	Annex restrooms	Need to erect storage building	
2. Newport City Park											
By the pool	Newport Parks and Rec	Far from partners	Full-sun	Access from the pool	Open 7am - 9pm Summer	Flat	Newport City Park parking	Secured by Parks and Rec	Parks and Rec facilities	May be provided by Parks	No fruit trees
By the pavilion	Newport Parks and Rec	Far from partners	Partial-sun, dappled sun	Pavilion has access	Open 7am - 9pm Summer	Flat	Newport City Park parking	Secured by Parks and Rec	Parks and Rec facilities	Offered storage in pavilion	No fruit trees
3. Newport Housing Authority - near Boys and Girls Club	Newport Housing Authority	Far from partners	Full-Sun	Boys and Girls Club - nearest access	Public can access by driving through housing community	Moderate sloping	Minimal parking or parking via a walkway - Boys and Girls Club or NHA office	Security cameras in place by NHA - would give us access	Possibly restrooms at B&G Club	Need to erect storage building	We would need to add Boys and Girls Club as a partner. Prove that bees aren't an issue.
4. Newport Housing Authority - Old - Playground	Newport Housing Authority	Far from partners	Full-Sun & Partial-sun, NHA offered to trim trees	Need to: get land use permission to tap city water line (\$775), need to pay monthly bill	Need to: establish a road from Glen Way to garden, need to get city permission	Flat	7-9 parking sites at garden location	NHA may be able to put in a camera, but vandalism and visitors would be an issue due to isolation.	No restrooms	Need to erect storage building	Fruit trees / bees OK.
5. Cocke County Schools - Three Rivers Learning	Cocke County Schools - Manney and Casey	Moderately far from partners	Full-sun	Possibility for it to be provided by schools	Open to the public, but public not encouraged due to school hours	Moderate sloping	Lots of parking at site	Secure area	Restroom usage minimal	Need to erect storage building	School hours a concern. Need to get school board approval.
6. Cocke County Schools - Vocational collaboration site	Cocke County Schools - Manney and Casey	Close to partners	Full-sun	Possibility for it to be provided by schools	Open to the public, but public not encouraged due to school hours	Flat	Need to see current parking plans that school has or need to add gravel lot	Moderately secure	No restrooms but convenience store nearby	Need to erect storage building	School hours a concern. Need to get school board approval.

Health Council Spotlight: Cocke County

- Land Acquisition and Permission

Location	Land-Use Permission	Partner Access	Sun Exposure	Water	Public Access	Land Condition	Parking	Security	Restrooms	Storage	Other
1. Greenway start				Add a frost-free tap, use county water from the annex						Need to erect storage building	
	Newport Parks and Rec	very close to partners	Full-Sun		Open to the public	Flat	use parking at the Annex	Security may be an issue	Annex restrooms		
2. Newport City Park										May be provided by Parks	
	Newport Parks and Rec	Far from partners	Full-sun	Access from the pool	Open from Spring Summer	Flat	Newport City Park parking	Secured by Parks and Rec	Parks and Rec facilities	Parks storage in pavilion	No fruit trees
	Newport Parks and Rec	Far from partners	Partial sun, dappled sun	Pavilion has access	Open from Spring Summer	Flat	Newport City Park parking	Secured by Parks and Rec	Parks and Rec facilities		No fruit trees
3. Newport Housing Authority - near Boys and Girls Club	Newport Housing Authority	Far from partners	Full-Sun	Boys and Girls Club - nearest access	Public can access by driving through housing community	Moderate sloping	Minimal parking or parking via a walkway - Boys and Girls Club or NHA office	Security cameras in place by NHA - would give us access	Possibly restrooms at B&G Club	Need to erect storage building	We would need to add Boys and Girls Club as a partner. Prove that bees aren't an issue.
					Need to establish a road from Glen			NHA may be able to put in a camera, but vandalism and visitors would be an issue due to isolation.		Need to erect storage building	Fruit trees / bees OK.
4. Newport Housing Authority - Old - Playground	Newport Housing Authority	Far from partners	Full-Sun & Partial-sun, NHA offered to trim trees	permission to tap city water line (\$775), need to pay monthly bill	Way to garden, need to get city permission	Flat	7-9 parking sites at garden location		No restrooms		
					Open to the public, but public not encouraged due to school hours				Restrooms	Need to erect storage building	School hours a concern. Need to get school board approval.
5. Cocke County Schools - Three Rivers Learning	Cocke County Schools - Manney and Casey	Moderately far from partners	Full-sun	Possibility for it to be provided by schools	encouraged due to school hours	Moderate sloping	Lots of parking at site	Secure area	usage minimal	storage building	
					Open to the public, but public not encouraged due to school hours		Need to see current parking plans that school		No restrooms but	Need to erect storage building	School hours a concern. Need to get school board approval.
6. Cocke County Schools - Vocational collaboration site	Schools - Manney and Casey	Close to partners	Full-sun	Possibility for it to be provided by schools	encouraged due to school hours	Flat	has or need to add gravel lot	Moderately secure	convenience store nearby	storage building	

Health Council Spotlight: Cocke County

Garden of Eat'N Community Teaching Garden

- Participation required for success:
 - Ground Breaking
 - Grand Opening
 - Community Workdays
 - Weekly Caretaking
 - Collaborative Meetings



Grand Opening July 14, 2023

Health Council Spotlight: Cocke County

- Weekly Caretaking

- Clear guidelines for caretaking
- Website sign-up sheet for promotion and easy maintenance
- Back-up personnel required for heavy watering weeks in late summer and for changes in organization or individual availability
- Collaborative partners needed for training, pest issues, and distribution of mature produce



Cabbages succumbed to caterpillars; beans to Mexican bean beetles



Health Council Spotlight: Cocke County

- Methods to increase community involvement:
 - Social Media Facebook Page
 - Incorporating elements of the project into existing organizational work plans (Little Free Garden Library)
 - Utilizing eager volunteer individuals and agencies
 - Establishing and promoting dates for programming early



Community Workdays May 20 & July 6, 2023



TNJCAP Volunteers

Health Council Spotlight: Cocke County



- Elements recommended for success:
- Fiscal sponsors for donations, reimbursable grants, and non-reimbursable grants (May be more than one agency)
 - Leadership & core participants
 - Land use agreement
 - Collaborative agreement
 - Workplan, Logic Model, & Budget
 - Clear communication for the collaborative partners, fiscal organizations, for the community and for volunteers.



Jennifer Ellison
Collective Impact Lead
Cocke County Cradle to Career Coalition
Jellison@cockecountypartnership.com



Airika Actouka
Board Member
Keep Cocke County Beautiful
airikaa@yahoo.com



Questions

Breakout Groups (*15 minutes*)

- Where are you from? (*place, organization*)
- Answer one of these questions:
 - What is the most beautiful sound in the world?
 - What is one of your favorite places in the world?
 - What is something kind that someone else has done for you recently?
 - What has been the highlight of your week so far?
- What impressed you most about Cocke County?
- How might you apply that to your local work?

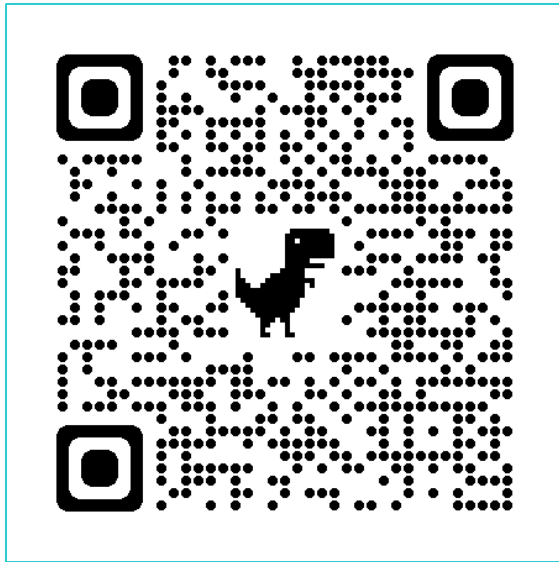
Share-out in chat

- What were the main takeaways from your **breakout** group?
- Share any **events** or **resources** that you have for the group.



Communication

- Monthly Health Council newsletter (from OSI)
 - Sign up here:



- CoP Contact List
 - Sign up here:





Atlee Tyree
Community Engagement Strategist
atlee.tyree@tn.gov



Thank you / Questions