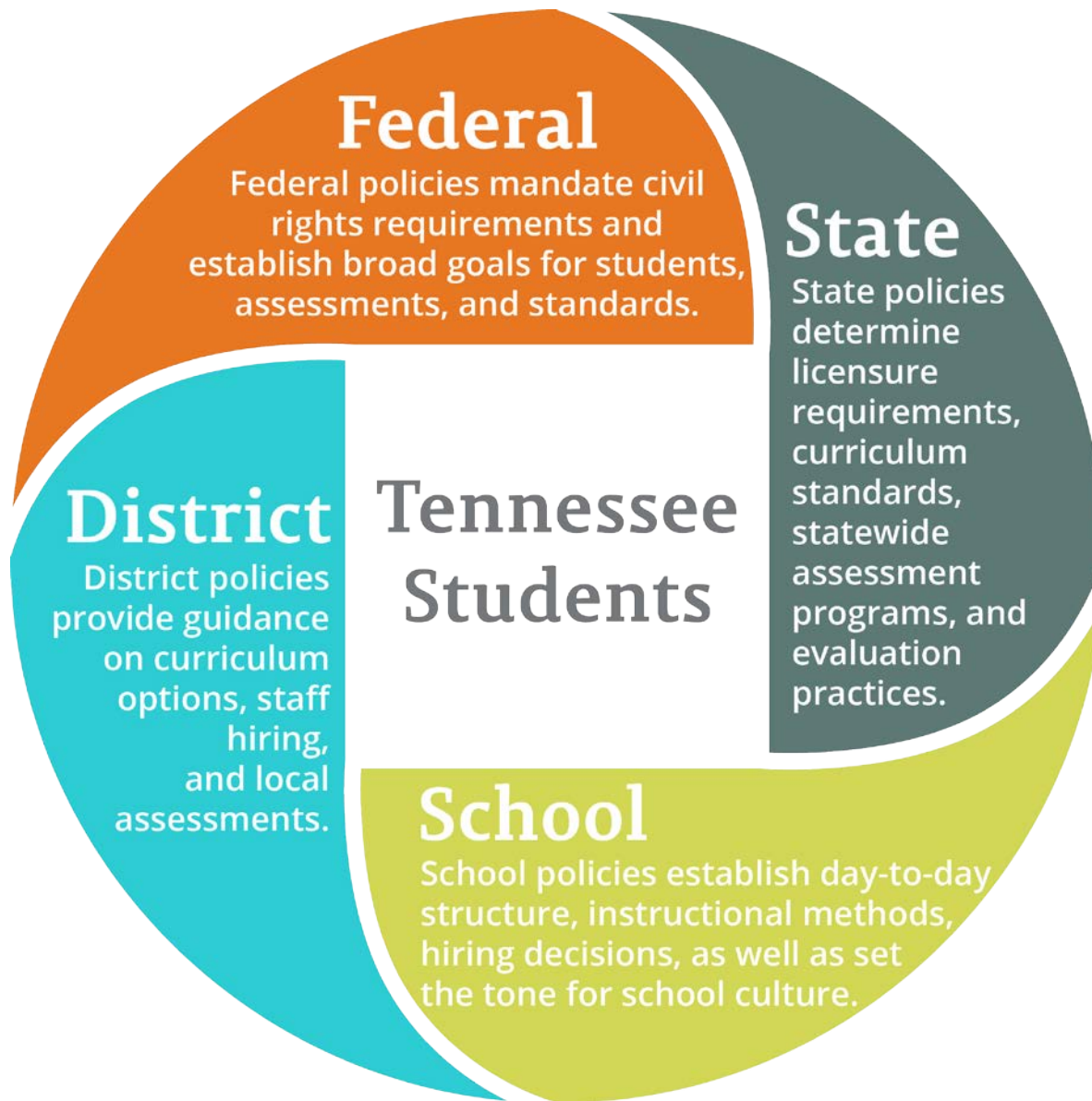




Tennessee Succeeds: The Every Student Succeeds Act in Tennessee

Every Student Succeeds Act

- Bipartisan legislation that reauthorizes the Elementary and Secondary Education Act, replaces No Child Left Behind
- Commitment to ensuring equity and opportunity for all students
- Increased decision-making authority and flexibility for states
- Focus on the whole student and well-rounded education



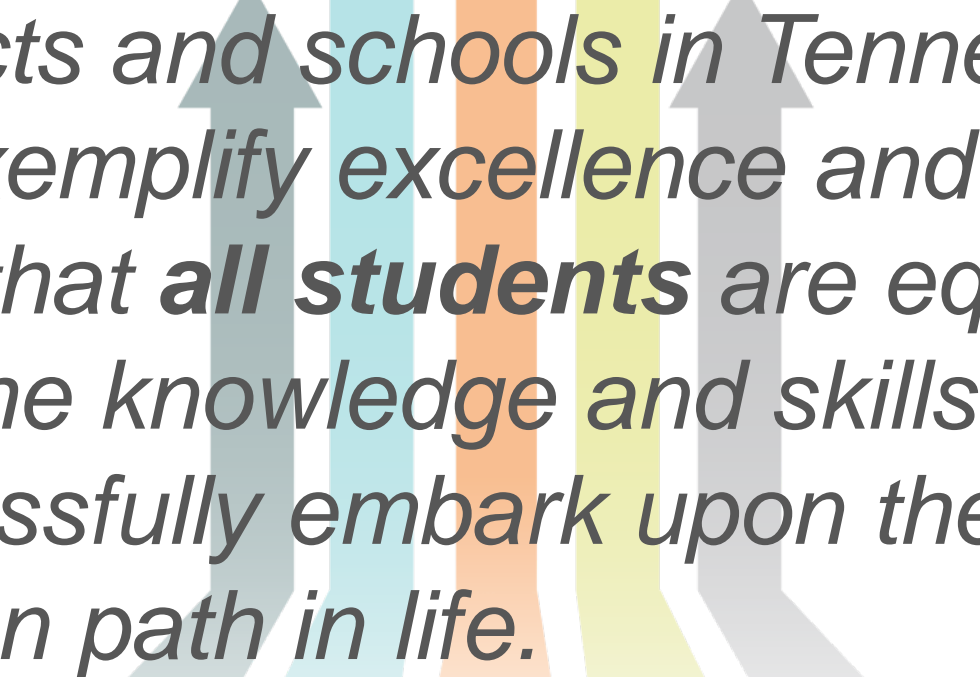


TN

Tennessee Succeeds

®

One Year Ago We Articulated Our Vision

The image features five vertical arrows pointing upwards, arranged in a row. From left to right, the colors are grey, teal, orange, lime green, and grey. The arrows are positioned behind the text, with the orange arrow being the tallest and most prominent.

*Districts and schools in Tennessee will exemplify excellence and equity such that **all students** are equipped with the knowledge and skills to successfully embark upon their chosen path in life.*

Our Big Goals

1

Tennessee will rank in the **top half of states** on the National Assessment of Educational Progress (NAEP) by 2019.



2

75 percent of Tennessee third graders will be **proficient in reading** by 2025.



3

The **average ACT composite score** in Tennessee will be a 21 by 2020.



4

The **majority of high school graduates** from the class of 2020 will earn a postsecondary certificate, diploma, or degree.



Our Priorities

Early Foundations & Literacy

Building skills in early grades to contribute to future success

High School & Bridge to Postsecondary

Preparing significantly more students for postsecondary completion

All Means All

Providing individualized support and opportunities for all students with a focus on those who are furthest behind

Educator Support

Supporting the preparation and development of an exceptional educator workforce

District Empowerment

Providing districts with the tools and autonomy they need to make the best decisions for students



TN



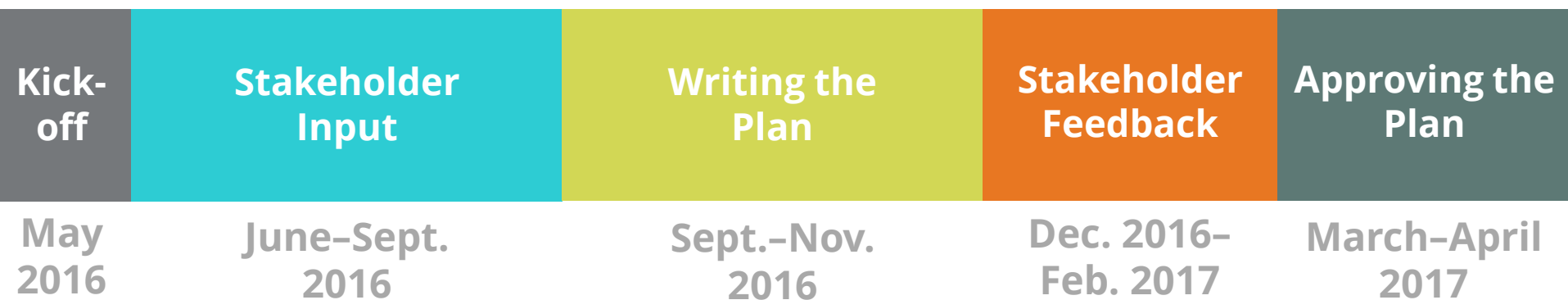
ESSA in Tennessee

®

ESSA State Plan: Overarching Goals

- Develop a Tennessee-specific ESSA state plan, aligned with the department's strategic plan
- Inform plan development through meaningful consultation with stakeholder groups
- Satisfy both federal and state requirements

Timeline for Developing TN's ESSA Plan



Stakeholders include directors of schools, principals, educators, parents and students, legislators, governor's office, state board of education, school board members, CORE offices, community organizations, and advocacy groups.

ESSA State Plan Working Groups

- Six working groups:
 - Accountability
 - Standards and Assessment
 - English Learners
 - Educator Support and Effectiveness
 - Student Support
 - School Improvement
- Working groups are comprised of individuals who are
 - Geographically diverse
 - Represent multiple stakeholder groups
 - Representative of both policy and practitioner points of view

Input Phase

- Status Report released in early October
 - Highlights **areas of consensus** and the **critical decisions** that need to be addressed
 - Stakeholder input:
 - More than **2,000 Tennesseans**
 - Majority of counties & school districts
- Who we heard from –
 - Career Forward, Assessment 2.0, and Personalized Learning Task Forces
 - Teacher, Parent, and SWD Advisory Councils
 - Governor’s Teachers Cabinet
 - CPM Advisory Committee
 - TSBA Regional Meetings
 - TOSS, TEA, PET, TASL/TLA
 - Advocacy groups – Conexion Americas, Urban League, StudentsFirst
 - SCORE Stakeholder groups
 - Chamber of Commerce & business leaders

The logo consists of a red square containing the letters 'TN' in white, serif font. Below the red square is a dark blue horizontal bar.

TN

**Key Opportunities
in ESSA**

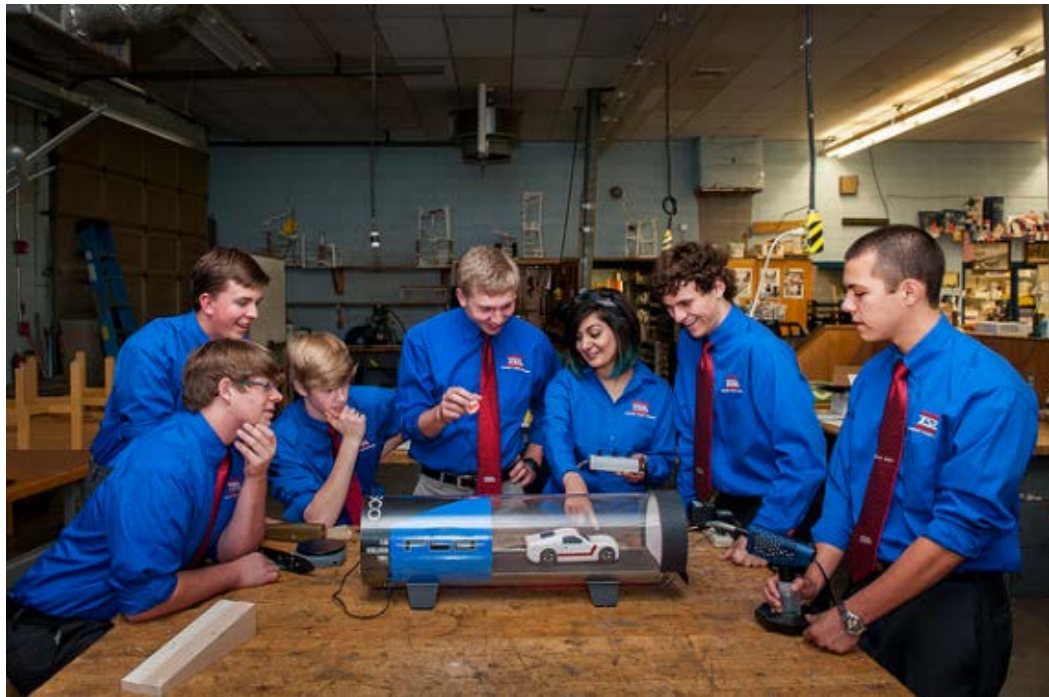
®

Opportunities for Tennessee

1. Set **high expectations** that align to postsecondary and workforce readiness so all of Tennessee's students are able to pursue their chosen path in life
2. Attend to the **needs of all students** in pre-K–12—especially historically disadvantaged students—so they can experience success after high school
3. Provide support, funding, intervention, and innovation for **persistently low-performing schools**
4. Focus on strengthening and **supporting educators**
5. **Empower districts** to drive toward student goals

Opportunity 1

*Set **high expectations** that align to **postsecondary and workforce readiness** so all of Tennessee's students are able to pursue their chosen path in life*



Opportunity 1

- Tennessee Academic Standards
 - **State-specific standards** in math, English language arts, science, and social studies
 - Comprehensive standards review process
- Improved and aligned **TNReady assessment** with reduced testing time for 2016-17 & additional reductions in 3rd/4th grade
- **New student score reports** that provide better feedback in a better format
- **ACT** retake opportunity and ACT prep course

Opportunity 2

*Attend to the **needs of all students** in pre-K-12—especially historically disadvantaged students—so they can experience success after high school*



Opportunity 2

- Focus on **the whole child** and well-rounded environments with support for
 - Expanding coursework and elective offerings
 - Developing social and personal competencies
 - State and district funding through federal enrichment grants
- Improved accountability framework includes
 - English learners progress toward English proficiency
 - New **“Opportunity to Learn”** indicator measuring chronic absenteeism
 - New **“Ready Graduate”** indicator measuring high school students’ readiness for postsecondary and the workforce

Opportunity 3

*Provide **support, funding, intervention, and innovation** for persistently low-performing schools*



Opportunity 3

- Improving lowest-performing schools through
 - New **School Improvement Continuum** and **Support Network** for Priority Schools
 - **Additional funding** for lowest-performing schools
- Tennessee will
 - Articulate **requirements and expectations** for schools and districts with varying intensity of intervention
 - Establish and communicate **clear criteria for ASD eligibility and exit**
 - Empower districts **with opportunity to turn around schools first** under clear expectations

Opportunity 4

*Focus on strengthening and supporting **educators***



Opportunity 4

- Tennessee is strengthening **educator preparation** by
 - Improving educator pipelines
 - Partnering with higher education institutions & districts
 - Providing new competitive grant funding for principal and teacher residency programs
- District human capital reports with **enhanced data and feedback** on teacher effectiveness, equity gaps, and mobility
- Improving **professional development** and ensuring all students have effective teachers in their classrooms

Opportunity 5

Empower districts to drive toward student goals



Opportunity 5

- Tennessee **empowers districts** through
 - CORE support and trainings
 - Opportunities for personalized learning for students and teachers
 - Flexible funding and consolidated planning
- Tennessee will **spur innovation** by building on successful practices and new funding
- Tennessee will provide **clearer information** on schools' performance under new accountability framework



TN

ESSA Plan Components

Standards

ESSA Requirements

- States must adopt **challenging academic standards**
 - Math
 - English Language Arts/Reading
 - Science

Tennessee's ESSA plan

- Tennessee SBE is charged with adopting Tennessee's academic standards
- Tennessee Standards review process occurs **every six years**
 - Math
 - English Language Arts
 - Science
 - Social studies

Assessment

ESSA Requirements

- **Annual state testing for reading and math in grades 3-8 and at least once in high school.**
- Testing of **science at least three times between grades 3-12.**
- **Alternate assessments** are to be aligned with alternate academic standards and achievement goals.
- Continued participation rate of **at least 95%** of all students and students in **each subgroup on all required assessments.**
- LEAs must **provide parents** with information on state or local **policy, procedures, and parental rights** regarding student participation in mandated assessments.

Tennessee's ESSA Plan

- **Annual tests in grades 3-8** in math, ELA, science, and social studies.
- **Annual tests in high school** in math, ELA, science, and social studies
 - EOCs: Algebra I, Algebra II, Geometry, English I, II, and III, U.S. History, Biology I, Chemistry
- ACT or SAT **required** in grade 11
- **Nearly all students with disabilities included in TCAP.**
 - ALT program limited to students with most severe disabilities (1%).
- Schools failing to meet 95 percent participation rate would receive **F for Achievement indicator.**
- All assessment schedules and local policies posted on district **websites.**

Accountability

ESSA Requirements

- **Annual Report Cards** required
- ESSA maintains a requirement for state and district Report Cards to include:
 - Concise description of the accountability system
 - Student achievement on academic assessment for all students and disaggregated by accountability subgroups:
 - Racial and ethnic groups
 - Economically disadvantaged (ED)
 - Students with disabilities (SWD)
 - English learners (EL)

Tennessee's ESSA Plan

Annual Report Card produced for all schools and districts with required **accountability** and additional **transparency** metrics

- Achievement data reported for the four key subgroups:
 - Black, Hispanic, & Native American (BHN)
 - Economically disadvantaged (ED)
 - Students with disabilities (SWD)
 - English learners (EL)
- School accountability designations
 - **Annual A-F grading**, including new measures of school quality
 - Disaggregation of school-level data by **additional subgroups for reporting**

Accountability: *District-Specific*

ESSA Requirements

- States have the ability to design their own **accountability systems** and will no longer submit waivers to USEd.
- In designing accountability systems, states must consider
 - **proficiency** on annual assessments
 - a measure of **growth** on annual assessments
 - **graduation rates**
 - **progress** in achieving **English language proficiency**
 - **measure of school quality and student success**

Tennessee's ESSA Plan

- Four district determinations of *In Need of Improvement, Progressing, Achieving, and Exemplary*
 - Multiple pathways to success that include achievement, TVAAS growth, and relative performance
- All student and subgroup performance **equally weighted** in final determinations
- Incorporates **ACT/SAT** performance and growth, and **graduation rate**
- New measures to be integrated
 - *Opportunity to Learn* (chronic absenteeism in year 1)
 - *Ready Graduate* indicator for high schools
 - **English Language proficiency**

Accountability: *School-Specific*

ESSA Requirements

- **Annual report cards** required
- Student **achievement** on academic assessments for all students and disaggregated by *all* subgroups
- Number and percentage of English learners achieving **English language proficiency**
- Performance on **other academic indicators** for elementary and secondary schools and high school **graduation rates**
- Performance on **other indicator(s) of school quality or student success** used by the accountability system

Tennessee's ESSA Plan

- The annual Report Card will include an **A-F grade** for schools beginning in 2018
 - achievement and growth
 - English Language proficiency
 - new measures of school quality and student success
- Inclusion of school quality and student success measures in framework:
 - **Opportunity to Learn** (chronic absenteeism in year 1)
 - **Ready Graduate** indicator for high schools
- Disaggregation by four key subgroups (BHN, ED, EL and SWD) and additional subgroups for reporting
- Inclusion of **non-academic indicators** on the Report Card: attendance, suspension rates, and other transparency metrics

School Improvement

ESSA Requirements

- Identify Comprehensive Support Schools once **every three years**
 - Lowest performing 5 percent of Title I schools
 - High schools with graduation rates below 67 percent
 - Schools with consistently underperforming subgroups
- Districts must design and implement **evidence-based plans** with community input.
- If school has not improved over the course of **no more than four years**, the state must intervene.

Tennessee's ESSA Plan

- Identify 5% lowest performing (Priority Schools) based on **academic achievement**
 - Safe harbor for schools with most recent two years of level 4 or 5 growth
- Identify schools with **consistently underperforming** subgroups – Focus Schools
- **Evidence-based** practices:
 - Strong leadership, effective instruction, student supports
- Differentiated tracks of intervention for lowest-performing schools
- Support of **district-led interventions** including iZones
- ASD most rigorous intervention

The logo consists of a red square with the letters 'TN' in white, serif font. Below the square is a dark blue horizontal bar.

TN

®

Questions?

All of us ensure Tennessee Succeeds





Department of
Education

Districts and schools in Tennessee will exemplify excellence and equity such that all students are equipped with the knowledge and skills to successfully embark on their chosen path in life.

Excellence | Optimism | Judgment | Courage | Teamwork