

North Central Regional Water Resources Planning Study

Elaine Boyd

Strategic Management Director

Bureau of Environment

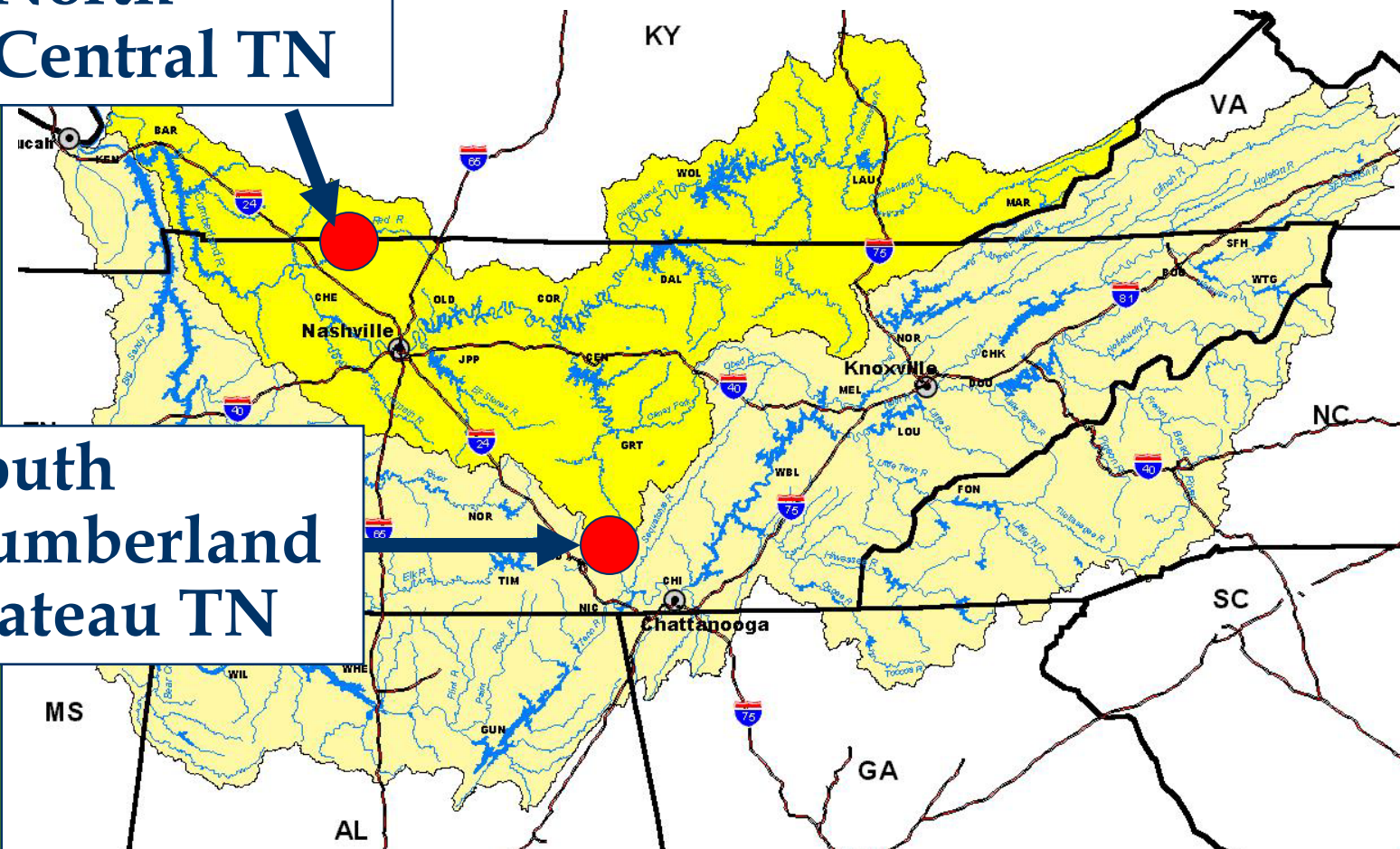
Tennessee Department of Environment and Conservation



Pilot Areas

**North
Central TN**

**South
Cumberland
Plateau TN**





Status

- Sequenced review of pilots
- Hearing concerns related to draft in multiple meetings with stakeholders
- Additional information provided calling for more detailed evaluation
- Revisiting of alternatives based on additional information



Tier 2 Evaluation

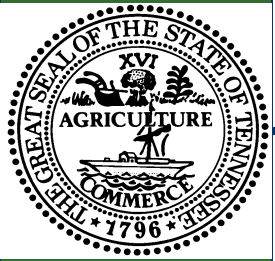
- Portland raw water pipeline to Cumberland River
- **Portland contract with White House Utility District**

✓ Cost	✓ Water Quality
✓ Environmental Benefits or Impacts	✓ Other



Next Steps for Pilot

- Finalize pilot report reflecting a range of withdrawal options and costs
 - Difficulty of projecting multitude of ways to mix use of current sources (Drakes Creek and City Lake) with either alternative
 - Historic growth vs. current
- Provide to local officials as a reference for decision-making
 - Recommendation, not a mandate



Regional Water Resources Planning

- OASIS Training / Access
- Model for the state
- Webpage

<http://tn.gov/environment/regionalplanning/>