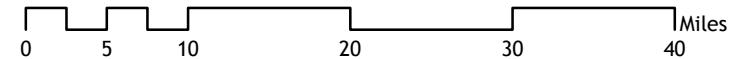
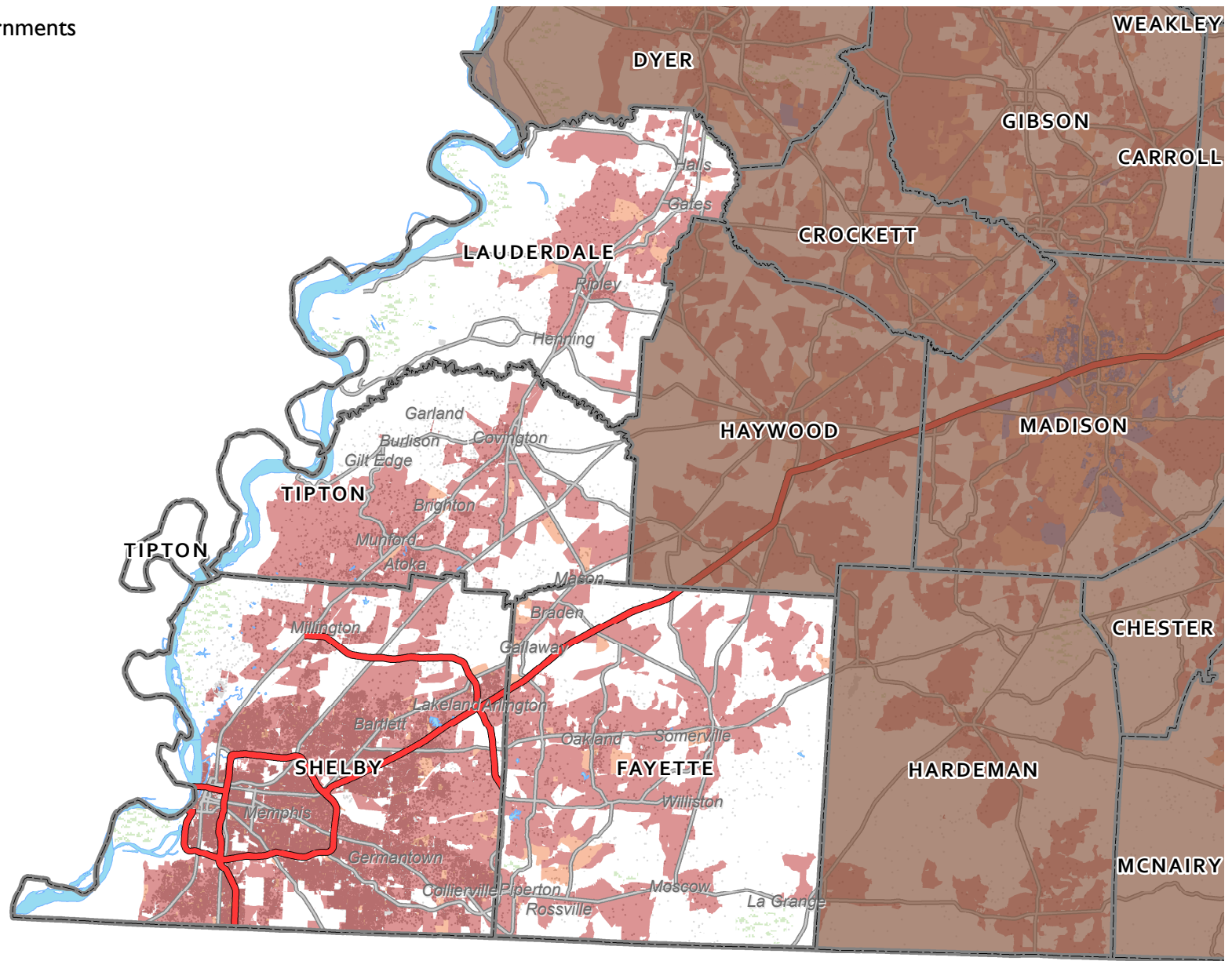
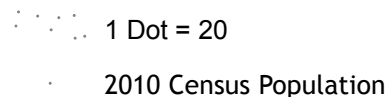
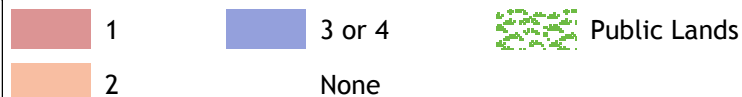



Appendix P: Number of Providers Reporting Download Capacities of At Least 25 Megabits per Second for Wireline and Fixed Wireless Service as of December 2015



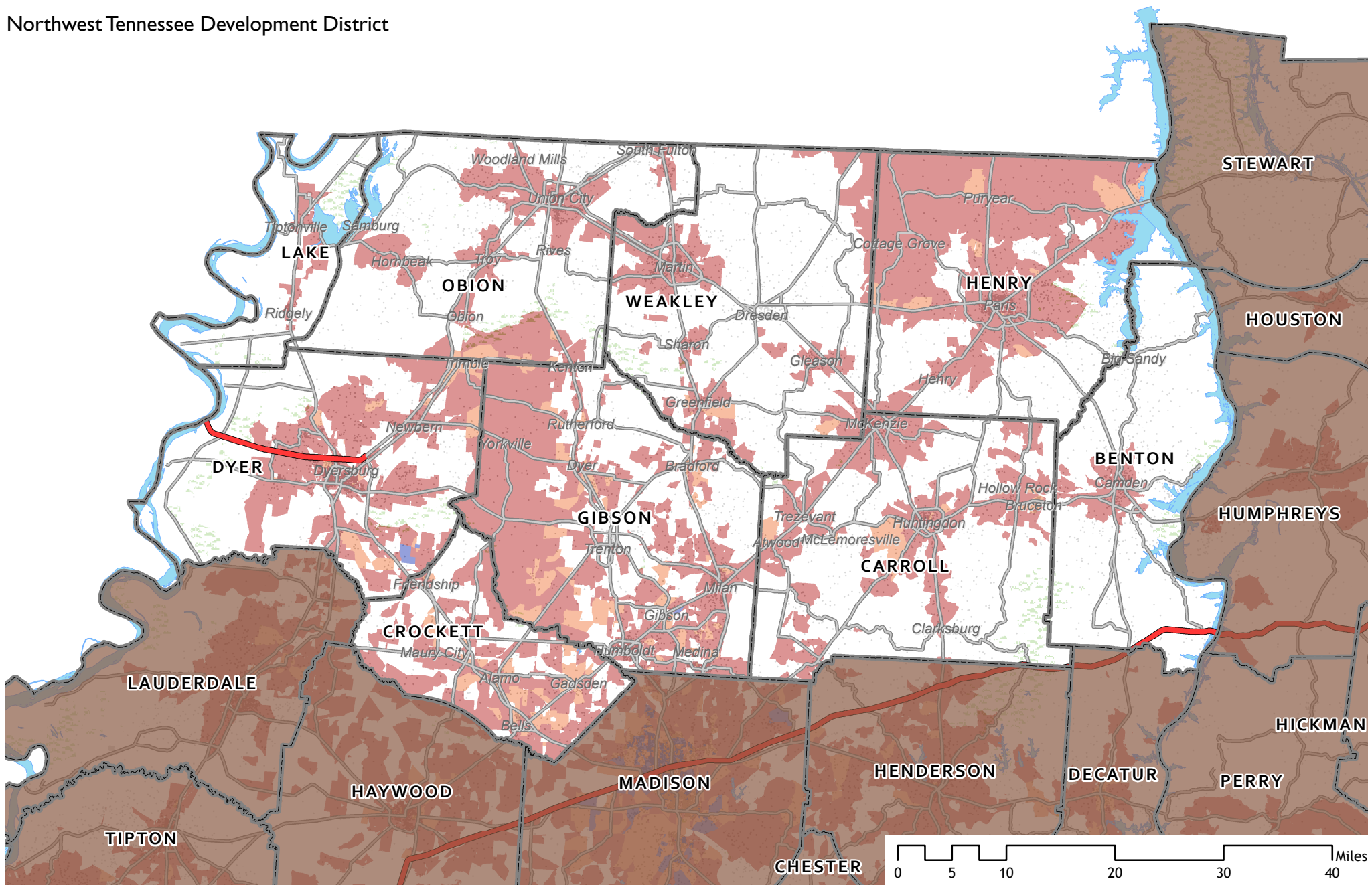
**Availability of Download Speeds 25 Mbps and Faster *
Number of Providers:**



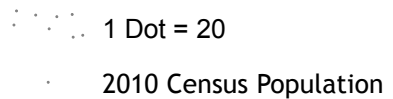
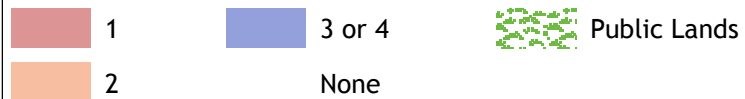
* Includes services through Asymmetric or Symmetric xDSL, Cable Modem, Optical/Fiber-to-the-home, and Terrestrial Fixed Wireless. Fixed Broadband Deployment Data from FCC Form 477, December 31, 2015, as reported by providers at the census block level.

Scale = 1 : 750,000 

Northwest Tennessee Development District

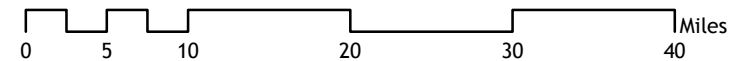
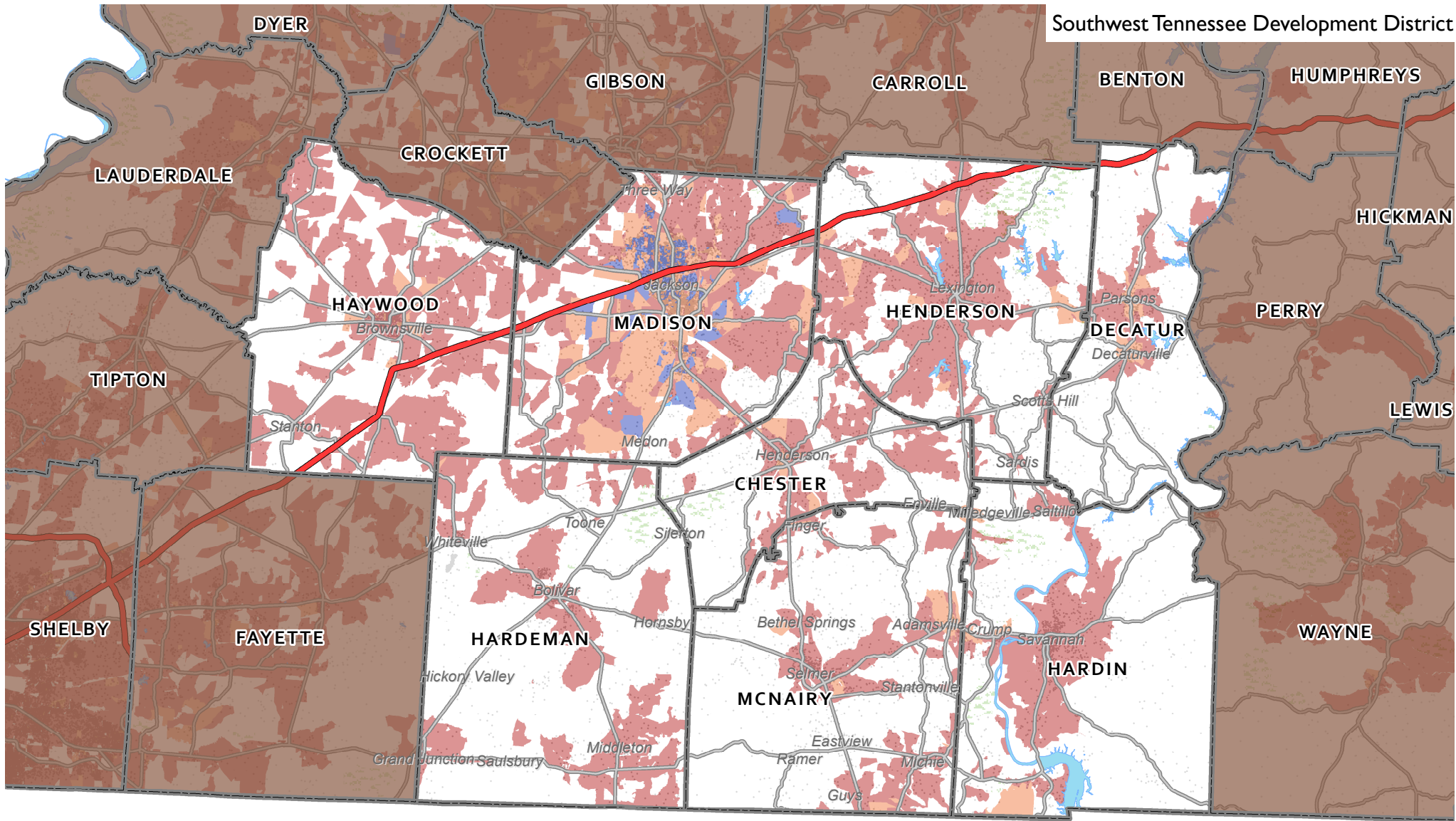


Availability of Download Speeds 25 Mbps and Faster * Number of Providers:

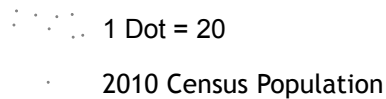
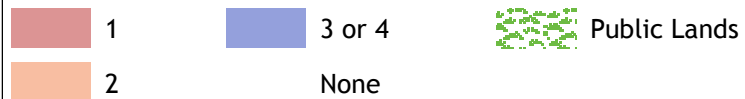


* Includes services through Asymmetric or Symmetric xDSL, Cable Modem, Optical/Fiber-to-the-home, and Terrestrial Fixed Wireless. Fixed Broadband Deployment Data from FCC Form 477, December 31, 2015, as reported by providers at the census block level.

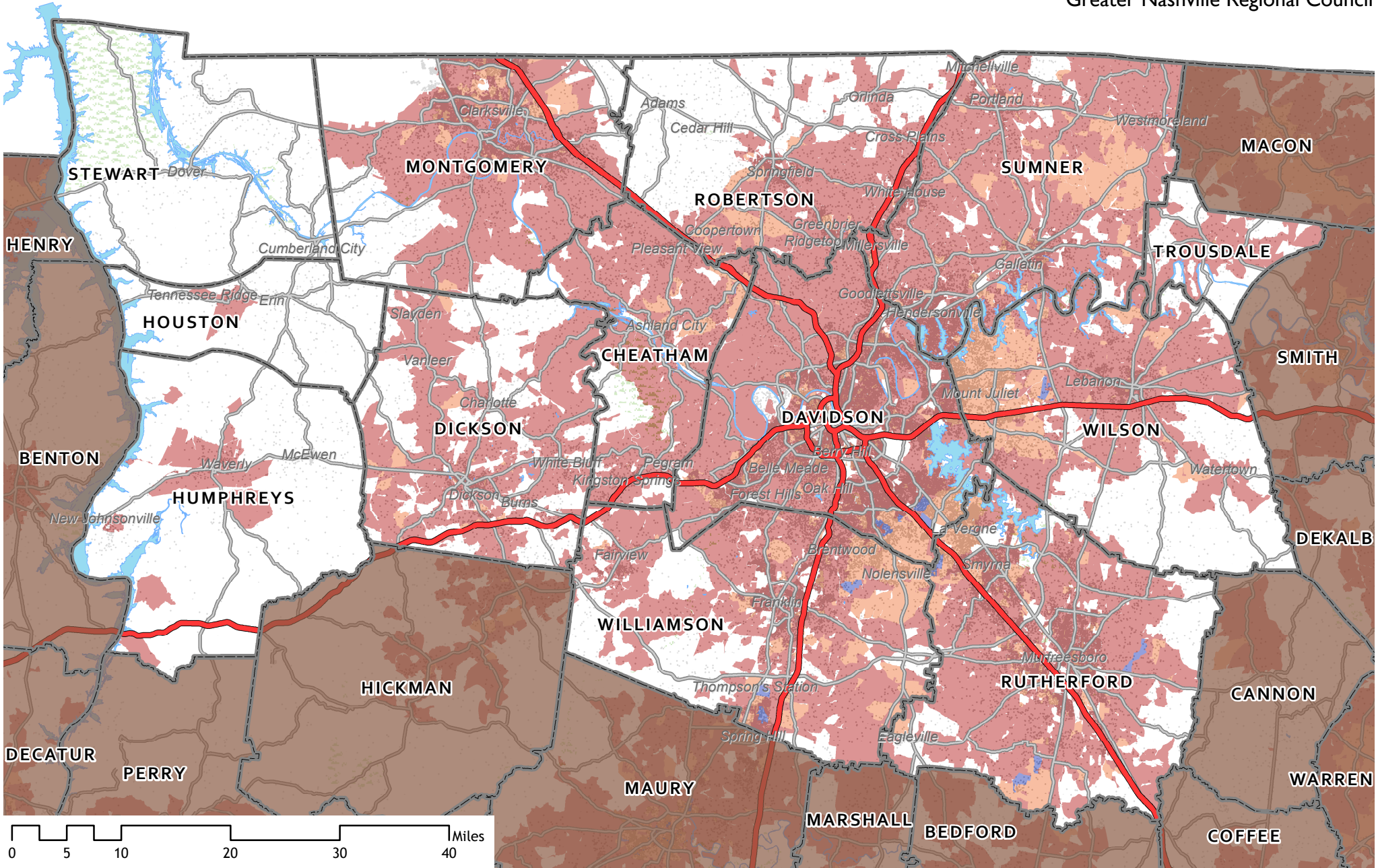
Scale = 1 : 750,000 N



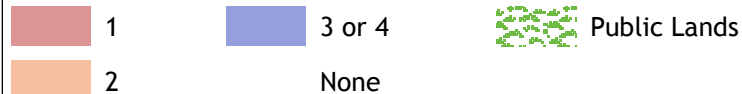
**Availability of Download Speeds 25 Mbps and Faster *
Number of Providers:**



* Includes services through Asymmetric or Symmetric xDSL, Cable Modem, Optical/Fiber-to-the-home, and Terrestrial Fixed Wireless. Fixed Broadband Deployment Data from FCC Form 477, December 31, 2015, as reported by providers at the census block level.



**Availability of Download Speeds 25 Mbps and Faster *
Number of Providers:**

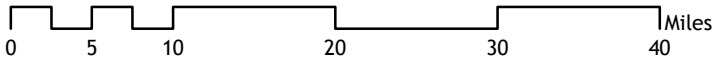
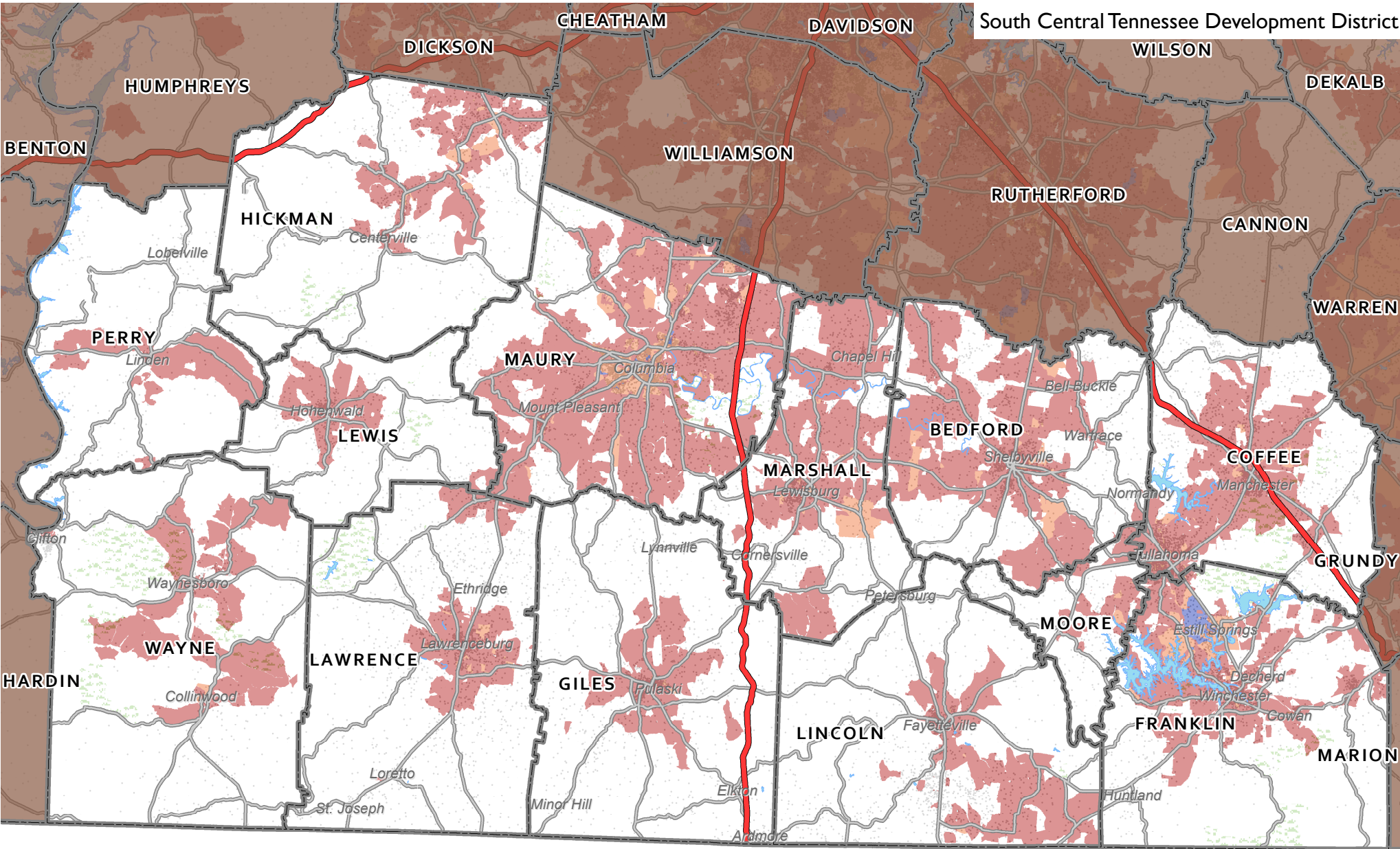


* Includes services through Asymmetric or Symmetric xDSL, Cable Modem, Optical/Fiber-to-the-home, and Terrestrial Fixed Wireless. Fixed Broadband Deployment Data from FCC Form 477, December 31, 2015, as reported by providers at the census block level.

2010 Census Population

Scale = 1 : 750,000

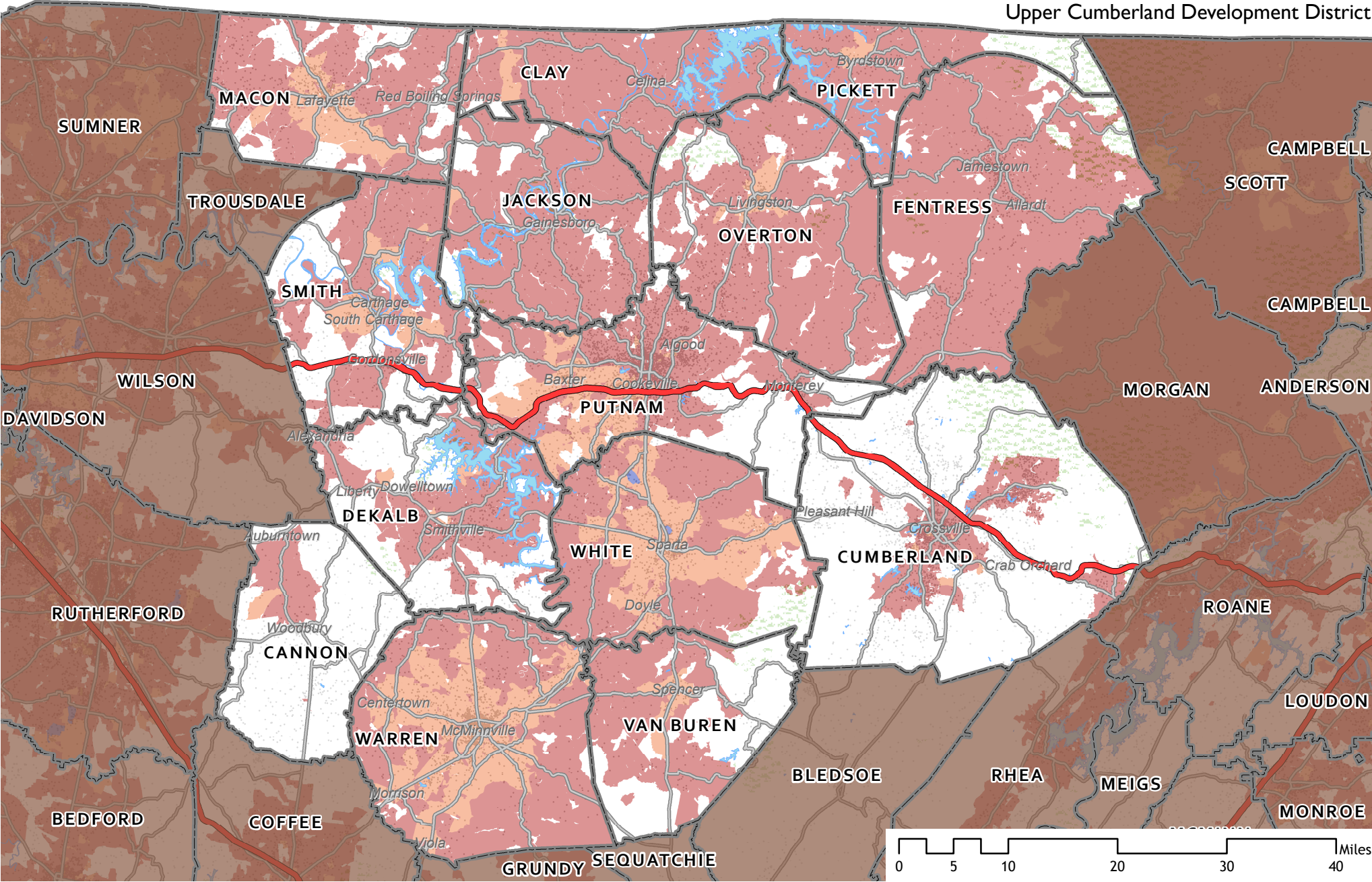




Availability of Download Speeds 25 Mbps and Faster *
Number of Providers:

- 1
- 3 or 4
- Public Lands
- 1 Dot = 20
- 2010 Census Population
- 2
- None

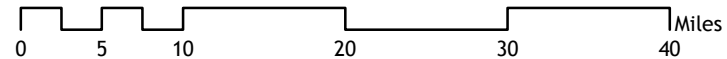
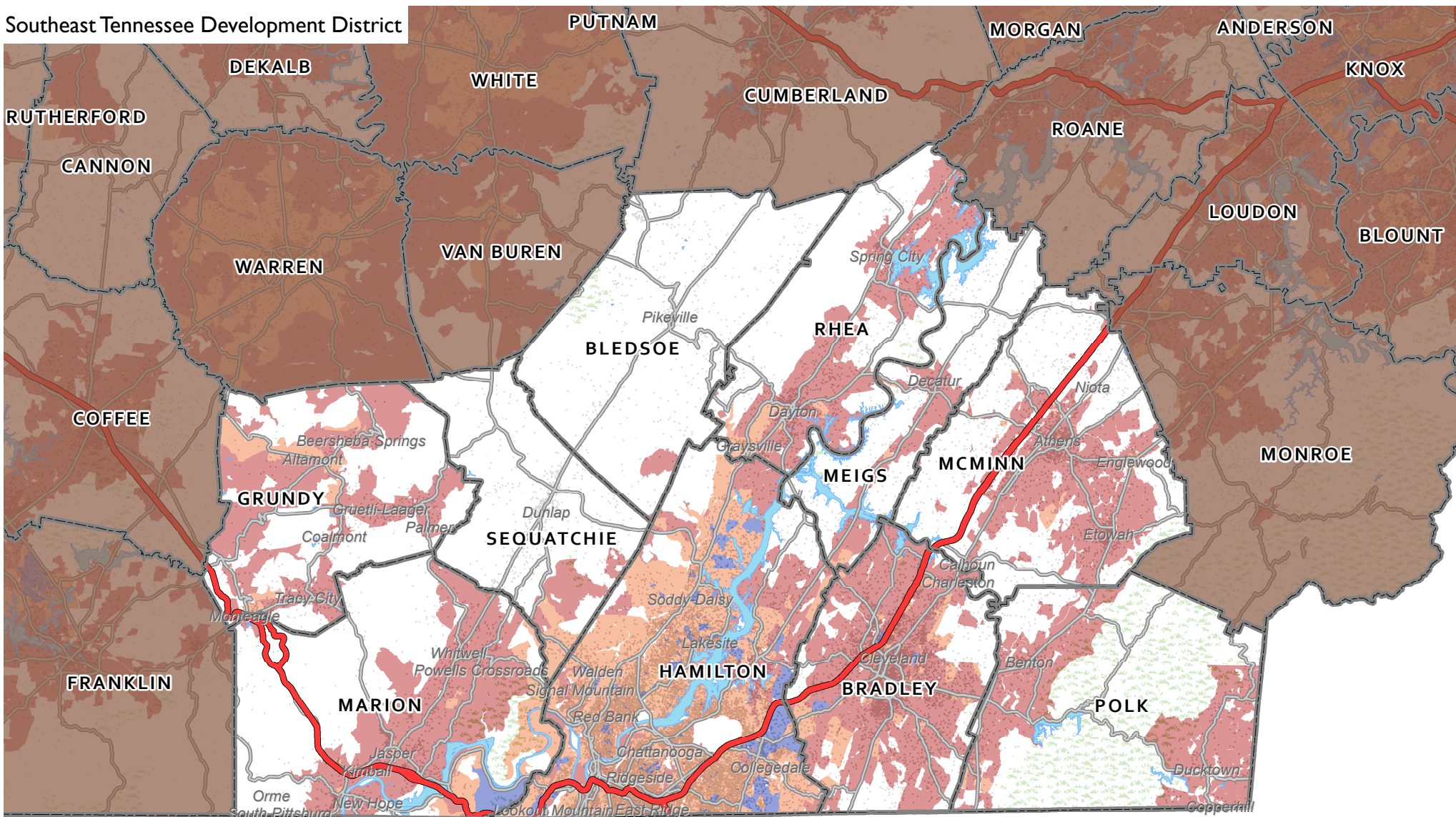
* Includes services through Asymmetric or Symmetric xDSL, Cable Modem, Optical/Fiber-to-the-home, and Terrestrial Fixed Wireless. Fixed Broadband Deployment Data from FCC Form 477, December 31, 2015, as reported by providers at the census block level.



Availability of Download Speeds 25 Mbps and Faster *
Number of Providers:

- 1
- 3 or 4
- Public Lands
- 2
- None
- 1 Dot = 20
- 2010 Census Population

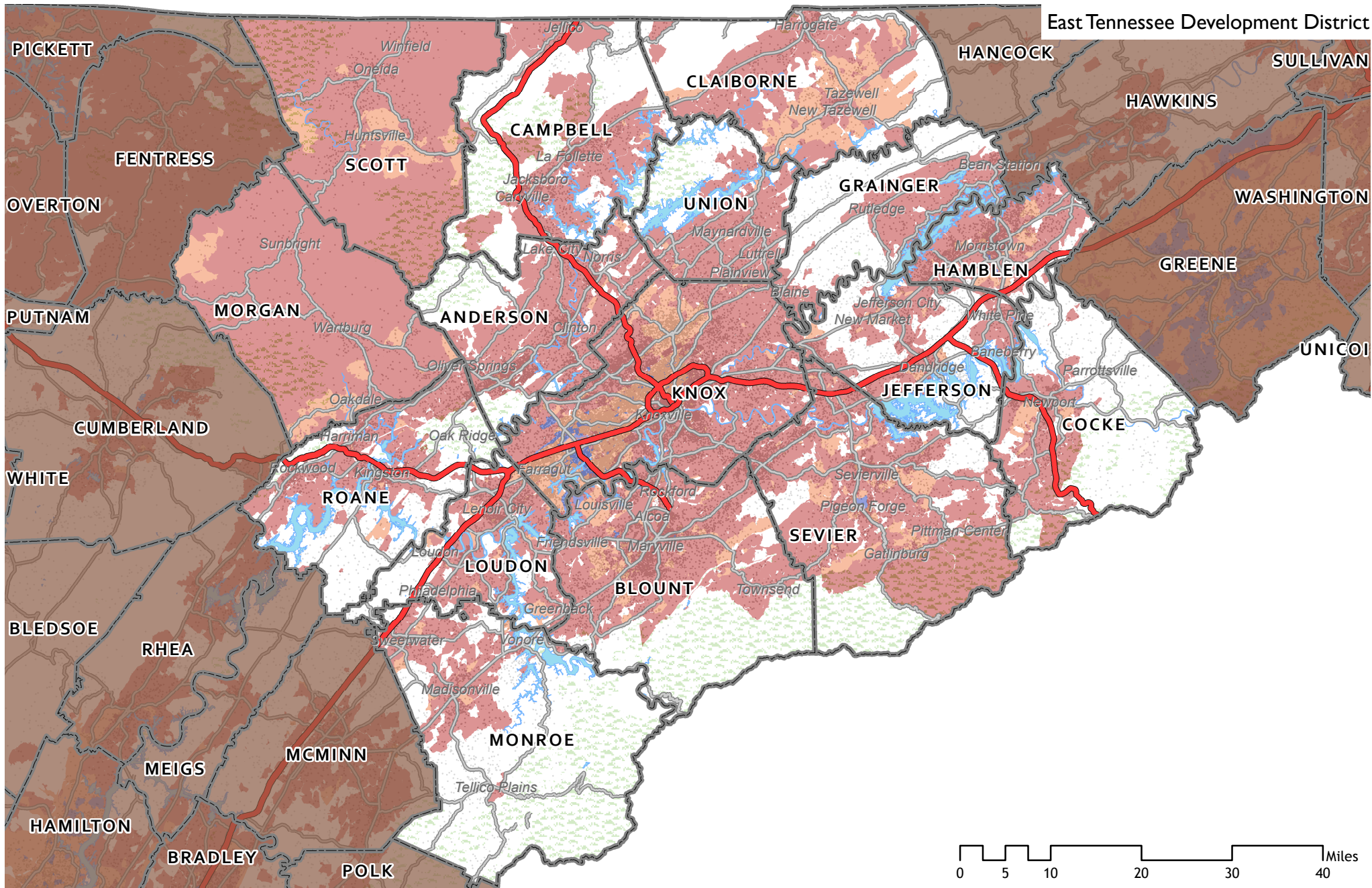
* Includes services through Asymmetric or Symmetric xDSL, Cable Modem, Optical/Fiber-to-the-home, and Terrestrial Fixed Wireless. Fixed Broadband Deployment Data from FCC Form 477, December 31, 2015, as reported by providers at the census block level.



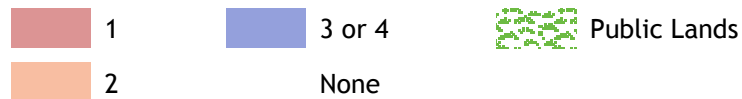
**Availability of Download Speeds 25 Mbps and Faster *
Number of Providers:**

- 1
- 3 or 4
- Public Lands
- 1 Dot = 20
- 2
- None
- 2010 Census Population

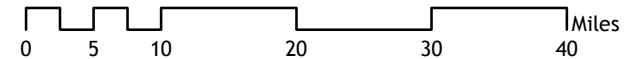
* Includes services through Asymmetric or Symmetric xDSL, Cable Modem, Optical/Fiber-to-the-home, and Terrestrial Fixed Wireless. Fixed Broadband Deployment Data from FCC Form 477, December 31, 2015, as reported by providers at the census block level.




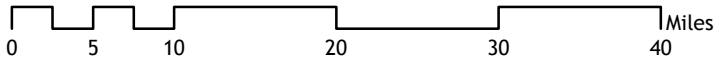
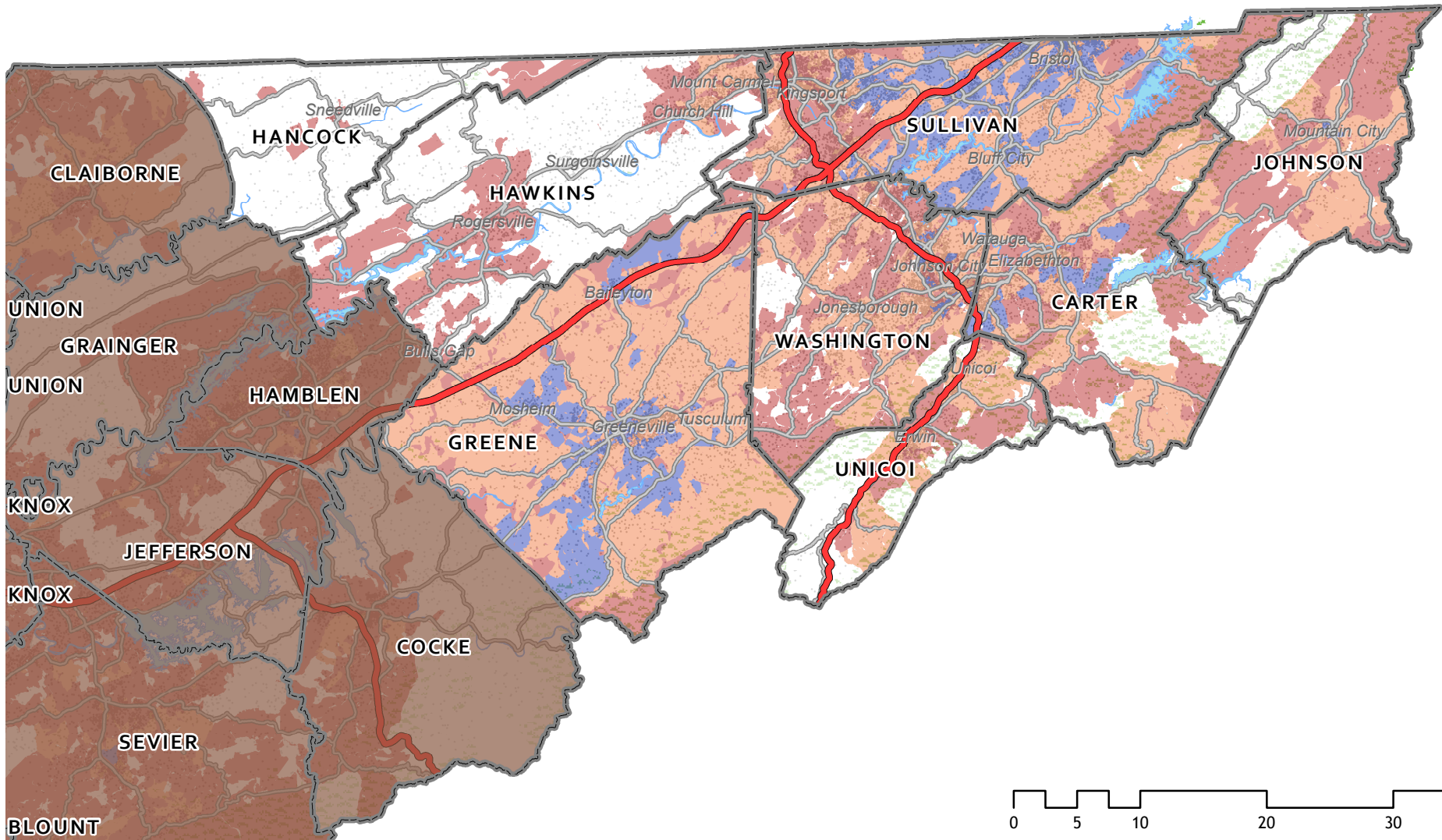
Availability of Download Speeds 25 Mbps and Faster *
Number of Providers:



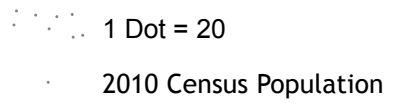
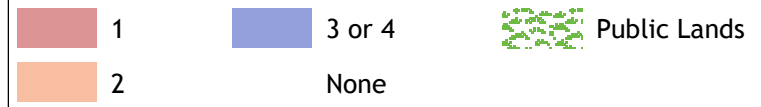
* Includes services through Asymmetric or Symmetric xDSL, Cable Modem, Optical/Fiber-to-the-home, and Terrestrial Fixed Wireless. Fixed Broadband Deployment Data from FCC Form 477, December 31, 2015, as reported by providers at the census block level.



Scale = 1 : 900,000 



**Availability of Download Speeds 25 Mbps and Faster *
Number of Providers:**



* Includes services through Asymmetric or Symmetric xDSL, Cable Modem, Optical/Fiber-to-the-home, and Terrestrial Fixed Wireless. Fixed Broadband Deployment Data from FCC Form 477, December 31, 2015, as reported by providers at the census block level.