

# TENNESSEE

**AIRPORT DIRECTORY**



# TENNESSEE

## AIRPORT DIRECTORY

---

Published by:

**Tennessee Department of Transportation**

Aeronautics Division

P.O. Box 17362

Nashville, Tennessee 37217

(615) 741-3208

---

This directory is compiled from the best available information on file as of August 2013 including FAA Airport Facility Records, Airman's Information Manual and state airport license data. It is printed for information only. Prior to making flights into these listed airports, the current Airman's Information Manual (AIM) and Airport/Facility Directory (A/FD) should be consulted. Military airports have been excluded.

It is unlawful to operate a public use airport without an appropriate license as provided by the Tennessee Department of Transportation.

Any corrections or additions to this directory should be forwarded to the Tennessee Department of Transportation, Aeronautics Division, P.O. Box 17326, Nashville, Tennessee 37217.

**NOTICE:** This directory is provided by the Tennessee Aeronautics Division and is **not for sale**.



Tennessee Department of Transportation, Authorization  
No. 401502, 8,000 copies, October 2013. This public  
document was promulgated at a cost of \$1.36 per copy.

---

# CONTENTS

---

Title Page .....	Inside cover
Table of Contents.....	i
Automated Weather Observation Stations .....	ii
ASOS Phone Numbers.....	iii
FCC Discrete Frequencies .....	iii
Airport Location Identifiers.....	iv & v
Key Airport Information.....	vi & vii
Telephone Numbers for Flight Service Stations and Weather Bureaus .....	viii
Airports: Photographs and Facility Data.....	1-79
<i>(listed alphabetically by city)</i>	
Map of ATC Center and Approach Frequencies.....	80

---

For pre-flight planning purposes only.

This information contained in this publication is not to be used for flight operations.

# AUTOMATED WEATHER OBSERVATION STATIONS

Associated City.....	Ident.....	Freq.....	Phone #.....
Athens.....	MMI.....	125.425.....	423-745-3422
Bolivar.....	MØ8.....	121.125.....	731-658-6436
Cleveland.....	RZR.....	120.475.....	423-479-6823
Collegedale.....	FGU.....	122.7.....	423-236-4028
Columbia-Mt. Pleasant.....	MRC.....	128.625.....	931-379-0844
Covington.....	MØ4.....	118.575.....	901-476-1705
Crossville.....	CSV.....	120.625.....	931-456-4406
Dayton.....	2AØ.....	135.075.....	423-775-4695
Dickson.....	MØ2.....	123.875.....	615-446-5481
Dyersburg.....	DYR.....	135.625.....	731-287-0300
Elizabethton.....	ØA9.....	135.675.....	423-543-1801
Fayetteville.....	FYM.....	135.275.....	931-433-5916
Gallatin.....	M33.....	132.725.....	615-230-8005
Greeneville.....	GCY.....	128.425.....	423-639-5081
Huntingdon.....	HZD.....	133.275.....	731-352-2854
Jacksboro.....	JAU.....	124.975.....	423-566-6474
Knoxville.....	DKX.....	125.375.....	865-579-6151
Lawrenceburg.....	2M2.....	120.175.....	931-766-1585
Lebanon.....	M54.....	118.325.....	615-444-5778
Lewisburg.....	LUG.....	135.775.....	931-270-1014
Lexington/Parson.....	PVE.....	118.125.....	731-845-5738
Livingston.....	8A3.....	126.175.....	931-823-3329
Madisonville.....	MNV.....	118.475.....	423-442-6170
McMinnville.....	RNC.....	135.525.....	931-668-7056
Memphis.....	MØ1.....	122.7.....	901-354-9296
Millington.....	2M8.....	122.8.....	901-873-0903
Millington.....	NQA.....	118.925.....	901-873-3630
Morristown.....	MOR.....	126.725.....	423-587-5886
Mountain City.....	6A4.....	126.225.....	423-727-4365
Murfreesboro.....	MBT.....	133.975.....	615-849-2622
Nashville.....	JWN.....	127.075.....	615-350-6222
Oneida.....	SCX.....	135.025.....	423-569-6651
Paris.....	PHT.....	118.825.....	731-644-0451
Portland.....	IM5.....	118.175.....	615-325-4971
Pulaski.....	GZS.....	118.275.....	931-383-6760
Rockwood.....	RKW.....	118.775.....	865-354-9269
Savannah.....	SNH.....	133.925.....	731-925-6080
Selmer.....	SZY.....	118.425.....	731-645-8184
Sevierville.....	GKT.....	126.875.....	865-429-5401
Shelbyville.....	SYL.....	119.275.....	931-685-4723
Somerville.....	FYE.....	119.875.....	901-465-6367
Sparta.....	SRB.....	128.250.....	931-738-3111
Springfield.....	M91.....	120.675.....	615-384-8206
Tullahoma.....	THA.....	128.325.....	931-454-2052
Union City.....	UCY.....	135.325.....	731-885-9161
Winchester.....	BGF.....	121.675.....	931-967-8445



## ASOS PHONE NUMBERS

---

Clarksville .....	CKV.....	931-431-3045	Memphis.....	MEM.....	901-332-3679
Chattanooga .....	CHA.....	423-499-5973	Nashville.....	BNA.....	615-360-6133
Crossville .....	CSV.....	931-456-4406	Smyrna .....	MQY .....	615-223-7716
Jackson .....	MKL.....	901-424-0692	Tri-Cities .....	TRI .....	423-325-6261
Knoxville .....	TYS.....	865-981-4053			

### FCC Discrete Frequencies/Transmit & Receive On:

---

Chattanooga Area.....	123.65	Crossville Area .....	122.5	Clarksville.....	134.575
Dyersburg Area.....	122.45	Jackson Area .....	122.65	Knoxville Area .....	122.3
Memphis Area.....	123.65	Nashville Area .....	122.55	Tri-Cities Area (c) .....	122.2

(c) = Common Freq.

# AIRPORT LOCATION IDENTIFIERS

ID	Airport Name	Associated City	Page No.
MMI	McMinn County	Athens	1
92A	Chilhowee Gliderport	Benton	2
M08	William L. Whitehurst Field	Bolivar	3
TRI	Tri-Cities Regional, TN/VA	Bristol/Johnson City/Kingsport	4
ØM4	Benton County	Camden	5
GHM	Centerville Municipal	Centerville	6
CHA	Lovell Field	Chattanooga	7
1A0	Dallas Bay Skypark	Chattanooga	8
CKV	Outlaw Field	Clarksville	9
RZR	Cleveland Regional Jetport	Cleveland	10
M29	Hassell Field	Clifton	11
FGU	Collegedale Municipal	Collegedale	12
MRC	Maury County	Columbia	13
1A3	Martin Campbell Field	Copperhill	14
MØ4	Covington Municipal	Covington	15
CSV	Crossville Memorial/Whitson Field	Crossville	16
2AØ	Mark Anton Airport	Dayton	17
MØ2	Dickson Municipal	Dickson	18
DYR	Dyersburg Municipal	Dyersburg	19
5ØM	Puckett Gliderport	Eagleville	20
ØA9	Elizabethton Municipal	Elizabethton	21
FYM	Fayetteville Municipal	Fayetteville	22
1A7	Jackson County	Gainesboro	23
M33	Sumner County Regional	Gallatin	24
GCY	Greeneville-Greene County Municipal	Greeneville	25
M31	Arnold Field	Halls	26
ØM3	John A. Baker Field	Hohenwald	27
M53	Humboldt Municipal	Humboldt	28
HZD	Carroll County	Huntingdon	29
JAU	Campbell County	Jacksboro	30
MKL	McKellar-Sipes Regional	Jackson	31
2A1	Jamestown Municipal	Jamestown	32
APT	Marion County - Brown Field	Jasper	33
ØA4	Johnson City	Johnson City	34
DKX	Downtown Island	Knoxville	35
TYS	McGhee Tyson	Knoxville	36
3M7	Lafayette Municipal	Lafayette	37
2M2	Lawrenceburg-Lawrence County	Lawrenceburg	38
M54	Lebanon Municipal	Lebanon	39
LUG	Ellington	Lewisburg	40
PVE	Beech River Regional	Lexington/Parson	41
M15	Perry County	Linden	42
8A3	Livingston Municipal	Livingston	43
MNV	Monroe County	Madisonville	44
M93	Houston County	McKinnon	45
RNC	Warren County Memorial	McMinnville	46
MØ1	General Dewitt Spain	Memphis	47
MEM	Memphis International	Memphis	48
2M8	Charles W. Baker Field	Millington	49
NQA	Millington Regional Jetport	Millington	50
MOR	Moore-Murrell Field	Morristown	51

# AIRPORT LOCATION IDENTIFIERS

ID	Airport Name	Associated City	Page No.
6A4	Johnson County	Mountain City	52
MBT	Murfreesboro Municipal	Murfreesboro	53
JWN	John C. Tune	Nashville	54
BNA	Nashville International	Nashville	55
SCX	Scott Municipal	Oneida	56
PHT	Henry County	Paris	57
1M5	Portland Municipal	Portland	58
GZS	Abernathy Field	Pulaski	59
RKW	Rockwood Municipal	Rockwood	60
RVN	Hawkins County	Rogersville	61
54M	Wolf River	Rossville	62
SNH	Savannah-Hardin County	Savannah	63
SZY	Robert Sibley	Selmer	64
GKT	Gatlinburg-Pigeon Forge	Sevierville	65
UOS	Franklin County	Sewanee	66
SY1	Bomar Field-Shelbyville Municipal	Shelbyville	67
OA3	Smithville Municipal	Smithville	68
MQY	Smyrna	Smyrna	69
FYE	Fayette County	Somerville	70
SRB	Upper Cumberland Regional	Sparta	71
M91	Springfield-Robertson County	Springfield	72
3A2	New Tazewell Municipal	Tazewell	73
ØM2	Reelfoot Lake	Tiptonville	74
TGC	Gibson County	Trenton	75
THA	Tulahoma Regional/Northern Field	Tulahoma	76
UCY	Everett-Stewart	Union City	77
ØM5	Humphreys County	Waverly	78
BGF	Winchester Municipal	Winchester	79

# KEY AIRPORT INFORMATION

---

1. **AIRPORT NAME/IDENT.** - A three character code assigned to airport.
2. **CITY** - City associated with airport.
3. **AIRPORT ELEVATION** - Elevation of highest point on runway.
4. **RUNWAY HEADING** - Magnetic heading of runway(s).
5. **RUNWAY SURFACE** - Concrete, asphalt or turf surface.
6. **RUNWAY LENGTH** - Length of pavement/turf end-to-end.  
\* \_Displaced/relocated threshold.
7. **RUNWAY WIDTH** - Width of the runway pavement or width of the turf surface.
8. **RUNWAY LIGHTS** - HIRL - High Intensity, MIRL Medium Intensity, LIRL - Low intensity. Special Instructions.
9. **VGI** - Visual Glide Slope Indicators  
Noted for each end of the runway.
10. **REILS** - Runway End Identifier Light System  
Noted for each end of the runway.
11. **APPROACH LIGHTS** - Lights to aid landing aircraft.
12. **PATTERN** - Standard - Standard pattern.  
15-RH - indicates Runway 15 has right hand traffic pattern.
13. **COMMUNICATIONS** - CTAF - Common traffic advisory frequency.  
UNICOM - Advisory frequency.  
TOWER - Control tower frequency.  
GRND - Ground frequency.  
CL DEL - Clearance delivery frequency.
14. **RCO or GCO** - ATC/FSS Ground Communication frequency.  
- ATC - Frequency used to activate instrument flight plan or flight following.
15. **AWOS/ASOS FREQUENCY** - Automated Weather Observation System/Automated Surface Observation  
- ATIS Frequency  
System broadcast frequency  
Automated Terminal Information Service broadcast frequency
16. **NAVIGATION** - TYPE - Navaid (NDB, VOR) or Broadcast Station (BS).  
IDENT - Navaid 3 or 4 letter identifier.  
FREQ - Navaid frequency.  
DIR/DIST - Direction and distance from navaid to airport.
17. **FBO/SERVICES** - Entity providing services.
18. **CONTACT** - On site individual with facility information.
19. **ATTENDED** - Hours services are available.
20. **FUEL** - Type of fuel available at airport.
21. **REPAIRS** - Major or minor repairs.
22. **STORAGE** - Aircraft hangars, Tie Downs or T-Hangars.
23. **ACCOMMODATIONS** - Motel, hotel, restaurants, etc.
24. **WIND INDICATOR** - Cone (windsock), tetrahedron.
25. **AWOS** - Telephone number to call for local airport.  
Automated Weather Observation System (AWOS) report. Note: Stations are located on airport property.
- ASOS** - Automated Surface Observation System.  
A network of Automated Weather Observation Systems installed by the National Weather Service at many larger airports.
26. **FROM CITY** - Direction and distance of airport from associated city.

**1**

↓

**AIRPORT NAME - IDENT.**

**2**

↓

**ASSOCIATED CITY - 1**

**3**

↓

**ELEVATION - XXX'**

RUNWAY	SURFACE	LENGTH	WIDTH	LIGHTS	VGI	REILS	APP LIGHTS	PATTERN
<b>4</b>	<b>5</b>	<b>6</b>	<b>7</b>	<b>8</b>	<b>9</b>	<b>10</b>	<b>11</b>	<b>12</b>

**13** ↘ **COMMUNICATIONS** ↙ **14**

CTAF	UNICOM	GCO	ATC

**15** ↘ **AWOS** ↙ **16**

NAVIGATION			
FREQ	TYPE	IDENT	DIR/DIST

**17** FBO/Services:

**18** Contact:

**19** Attended:

**20** Fuel:

**21** Repairs:

**22** Storage:

**23** Accomidations:

**24** Wind Indicator:

**25** AWOS:

**26** From City:

**27** Coordinates:

**28** Transportation:

**29** Remarks:

**27. COORDINATES**

**28. TRANSPORTATION**

- Latitude and Longitude of airport reference point.
- Taxi, rental car or courtesy car.

# TELEPHONE NUMBERS FOR FLIGHT SERVICE STATIONS AND WEATHER BUREAUS

---

Contact Flight Service Stations (FSS) listed in this directory by using the toll free number 1-800-WX-BRIEF. In some locations, you may be able to contact FSS in your area by using a local telephone number.

IFR Clearance (TN) 1-888-766-8667

## ENROUTE FLIGHT ADVISORY SERVICE (EFAS) FLIGHT WATCH

East Tennessee: Contact Macon FSS 122.0 MHz

West Tennessee: Contact Jackson FSS 122.0 MHz

## FLIGHT STANDARDS DISTRICT OFFICES

Memphis 901-544-3820

Nashville 615-781-5430

### NOTE:

Effective runway gradients are shown for those runways with gradients equal to or greater than one percent. The effective gradient is computed by dividing the difference between the maximum and minimum elevations to the runway by the lengths of the runway.

All gradients are expressed to indicate a down slope from the threshold of the identified runway.



**ELEVATION - 874'**

RUNWAY	SURFACE	LENGTH	WIDTH	LIGHTS	VGI	REILS	APP LIGHTS	PATTERN
02/20	ASPHALT	6,450'	100'	MIRL	PAPI/ PAPI	Y/Y		Standard

COMMUNICATIONS				AWOS	NAVIGATION			
CTAF	UNICOM	GCO	ATC	FREQ	TYPE	IDENT	FREQ	DIR/DIST
122.8	122.8		123.9 TYS APP	125.425	VOR NDB BS	HCH MMI WLAR	117.6MHz 242KHz 1450KHz	140°@30.8M On Airport 141°@4 NM

**FBO/Services:** Athens Air, LLC 423-745-4939  
**Contact:** Kristy Gentry Cox 423-745-7634  
**Attended:** 8:30-5:30 PM, 12:30-5:30 PM Sun  
**Fuel:** 100LL/Jet A 24/7  
**Repairs:** Major  
**Storage:** Hangar, Tie Down  
**Accommodations:** Motels in Town

**Wind Indicator:** Cone  
**AWOS:** 423-745-3422  
**From City:** 3 Miles SE  
**Coordinates:** N35°23.95 W84°33'71  
**Transportation:** Taxi, Rental & Courtesy Cars  
**Remark:** Rwy 02 Thres Displ 950'



**ELEVATION - 770'**

RUNWAY	SURFACE	LENGTH	WIDTH	LIGHTS	VGI	REILS	APP LIGHTS	PATTERN
03/21	TURF	*2,600'	200'	Cones		N/N		Power Pattern Rt. For 03 Left for 21

COMMUNICATIONS				AWOS	NAVIGATION			
CTAF	UNICOM	GCO	ATC	FREQ	TYPE	IDENT	FREQ	DIR/DIST
122.9			125.1 CHA APP					

**FBO/Services:** Chilhowee Soaring Association,  
Inc. 423-338-2000  
**Contact:** Sarah Kelly Arnold 423-506-9015  
**Attended:** Weekends  
**Fuel:** None  
**Repairs:** None  
**Storage:** Tie Down  
**Accommodations:** In Town

**Wind Indicator:** Cone  
**AWOS:**  
**From City:** 5 Miles N  
**Coordinates:** N35°13.59 W84°35'10  
**Transportation:** Courtesy Car with Prior Arrangements  
**Remark:** Rwy's 03, 21 Disp 200'





**ELEVATION - 499'**

RUNWAY	SURFACE	LENGTH	WIDTH	LIGHTS	VGI	REILS	APP LIGHTS	PATTERN
01/19	ASPHALT	5,007'	75'	MIRL	PAPI/ PAPI	Y/Y		Standard

COMMUNICATIONS				AWOS	NAVIGATION			
CTAF	UNICOM	GCO	ATC	FREQ	TYPE	IDENT	FREQ	DIR/DIST
123.0	123.0		134.65 MEM CTR	121.125	VOR BS	MKL WBOL	112.0 MHz 1560 KHz	194°@24.2NM 230°@ 4 NM

**FBO/Services:** Hardeman Co.731-658-7556

**Contact:** Dennis O'Connor731-518-5741

**Attended:** 8:30-5:00 PM

**Fuel:** 100LL, Jet A

**Repairs:** Major

**Storage:** Hangar, Tie Down

**Accommodations:** Nearby

**Wind Indicator:** Cone

**AWOS:** 731-658-6436

**From City:** 4 Miles SW

**Coordinates:** N35°12.91 W89°02.60

**Transportation:** Courtesy Van/Shuttle

**Remarks:**

TRI-CITIES REGIONAL, TN/VA-TRI **BRISTOL/JOHNSON CITY/KINGSPORT - 4**



**ELEVATION - 1519'**

RUNWAY	SURFACE	LENGTH	WIDTH	LIGHTS	VGI	REILS	APP LIGHTS	PATTERN
05/23 09/27	ASPHALT ASPHALT	8,000' 4,442'	150' 150'	HIRL/ MIRL	R5-VASI R23-PAPI R27-PAPI		VASI/ALSF 2 & PAPI REIL & PAPI	Standard Standard

COMMUNICATIONS				AWOS	NAVIGATION			
CTAF	UNICOM	GCO	ATC	FREQ	TYPE	IDENT	FREQ	DIR/DIST
Tower 119.5 GRND 121.7		122.2 RCO	134.425 125.5 TRI	ATIS 118.25	VOR NDB BS	HMV BO WJCW	114.6MHz 221 KHz 910 KHz	284° 13.6 NM 048° @ 6.2 NM 044° @6 NM

**FBO/Services:** Tri-City Aviation  
**Contact:** Pam Phillips 423-325-6261  
**Attended:** 24 Hours  
**Fuel:** 100LL/Jet A  
**Repairs:** Major  
**Storage:** Hangar, Tie Down  
**Accommodations:** Motel, Restaurant Near Airport

**Wind Indicator:** Lighted Cone  
**AWOS:** ASOS 423-279-0363  
**From City:** 14 Miles SW Bristol  
**Coordinates:** N36°28.51 W82°24.45  
**Transportation:** Limousine, Taxi, Rental & Courtesy Car  
**Remarks:** Tower Operates 6:00-12:00 AM  
 See AFD for Rwy Approach Lighting Operation



### ELEVATION - 468'

RUNWAY	SURFACE	LENGTH	WIDTH	LIGHTS	VGI	REILS	APP LIGHTS	PATTERN
04/22	ASPHALT	5,001'	75'	MIRL	PAPI/ PAPI	Y/Y		Standard

COMMUNICATIONS				AWOS	NAVIGATION			
CTAF	UNICOM	GCO	ATC	FREQ	TYPE	IDENT	FREQ	DIR/DIST
122.8	122.8		125.85 MEM CTR		VOR BS	JKS WFWL	109.4 MHz 1220 KHz	023° @7.2NM 207° @2 NM

**FBO/Services:** Benton County 731-584-6011  
**Contact:** Sparky Hightower 731-584-5343  
**Attended:** 7:00-5:00 PM After Hours Service  
 Call 731-584-3609  
**Fuel:** 100LL/Jet A  
**Repairs:** None  
**Storage:** Hangar, Tie Down  
**Accommodations:** In Town

**Wind Indicator:** Cone  
**AWOS:**  
**From City:** 3 Miles S  
**Coordinates:** N36°00.57 W88°07.48  
**Transportation:** Courtesy Van  
**Remarks:**

# CENTERVILLE MUNICIPAL-GHM      CENTERVILLE - 6



## ELEVATION - 768'

RUNWAY	SURFACE	LENGTH	WIDTH	LIGHTS	VGI	REILS	APP LIGHTS	PATTERN
2/20	ASPHALT	*4,002'	75'	MIRL	PAPI/ PAPI	Y/Y		Standard

COMMUNICATIONS				AWOS	NAVIGATION			
CTAF	UNICOM	GCO	ATC	FREQ	TYPE	IDENT	FREQ	DIR/DIST
122.8	122.8		125.85 MEM CTR		VOR BS	GHM WHLP	111.6 MHz 1570 KHz	Adj Airport 357° @ 4 NM

**FBO/Services:** Town of Centerville  
 931-729-4246  
**Contact:** Airport 931-729-3032  
**Attended:** 7:30-4:00 PM Mon-Fri  
**Fuel:** 100LL Self-Service 24/7  
**Repairs:** None  
**Storage:** Hangar, Tie Down  
**Accommodations:** Motels, Restaurants 1 mile

**Wind Indicator:** Cone  
**AWOS:**  
**From City:** 3 Miles N  
**Coordinates:** N35°50.25 W87°26.72  
**Transportation:** Courtesy Car  
**Remarks:** After Hours 615-418-2164  
 \*Rwy 20 Displ 250'



**ELEVATION - 682'**

RUNWAY	SURFACE	LENGTH	WIDTH	LIGHTS	VGI	REILS	APP LIGHTS	PATTERN
02/20 15/33	ASPHALT ASPHALT	7,400' 5,575'	150' 150'	HIRL MIRL	PAPI/ PAPI	N/N	MALSR/ ALSF12	Standard Standard

COMMUNICATIONS				AWOS		NAVIGATION			
CTAF	UNICOM	GCO	ATC	FREQ	TYPE	IDENT	FREQ	DIR/DIST	
Tower 118.3 Grnd 121.7 Cl Del 120.95	122.95		132.05	ATIS 119.85 ASOS	VOR NDB BS	GQO CON WDOD	115.8MHz 341 KHz 1310 KHz	330° @ 5.1 NM 198° @ 8.2 NM 109° @ 7 NM	

**FBO/Services:** TAC Air 423-490-4620  
 Wilson Air 423-855-2299  
**Contact:** Terry Hart 423-885-2200  
**Attended:** 24 Hours Tower Operates  
 6:00-11:50 PM  
**Fuel:** 100LL/Jet A  
**Repairs:** Major  
**Storage:** Hangar, Tie Down  
**Accommodations:** Nearby

**Wind Indicator:** Cone  
**AWOS:** 423-499-5973 ASOS  
**From City:** 5 Miles E  
**Coordinates:** N35°02.11 W85°12.21  
**Transportation:** Limo, Taxi, Rental & Courtesy Car  
**Remarks:** Use CTAF(118.3) When Tower Inop-erative, See AFD for Runway Lighting Operation



### ELEVATION - 690'

RUNWAY	SURFACE	LENGTH	WIDTH	LIGHTS	VGI	REILS	APP LIGHTS	PATTERN
05/23	ASPHALT	*3,025'	50'		VASI	N/N		23 RH

COMMUNICATIONS				AWOS	NAVIGATION			
CTAF	UNICOM	GCO	ATC	FREQ	TYPE	IDENT	FREQ	DIR/DIST
123.0	123.0		119.2 CHA APP		VOR NDB BS	GQO CQN WDEF	115.8 MHz 341 KHz 1370 KHz	354° @ 13.6 NM 301° @ 2 NM 043° @ 12 NM

**FBO/Services:** Dallas Bay Skypark  
 423-842-9845  
**Contact:** John Osterhage 423-453-0604  
**Attended:** 8:30-7:00 PM Sat & Sun Only  
**Fuel:** 100LL  
**Repairs:** None  
**Storage:** Hangar, Tie Down  
**Accommodations:** In Town

**Wind Indicator:** Tetrahedron, Cone  
**AWOS:**  
**From City:** 11 Miles N  
**Coordinates:** N35°11.25 W85°10.66  
**Transportation:** Taxi  
**Remarks:** Within Chatt Class C Airspace, \*Rwy 05 Thres Displ 200', Rwy 23 Thres Displ 700'



**ELEVATION - 550'**

RUNWAY	SURFACE	LENGTH	WIDTH	LIGHTS	VGI	REILS	APP LIGHTS	PATTERN
17/35 05/23	ASPHALT ASPHALT	6,000' *4,004'	100' 100'	MIRL MIRL	N/VASI N/N	Y/Y N/N	N/MALS* N/N	35-RH 05-RH

COMMUNICATIONS				AWOS		NAVIGATION			
CTAF	UNICOM	RCO	ATC	FREQ	TYPE	IDENT	FREQ	DIR/DIST	
122.8	122.8	110.6T 122.1R	118.1 FT. CAMP APP	134.575 ASOS	VOR NDB BS	CKV CK WJZM	110.6MHz 335 KHz 1400 KHz	On Airport 374° @5.8 NM 330° @7 NM	

**FBO/Services:** Clarksville-Mont Co Reg Arpt Auth  
 931-431-2080  
**Contact:** John Patterson 931-431-2080  
**Attended:** 8:00-6:00 PM  
**Fuel:** 100LL/Jet A  
**Repairs:** Major  
**Storage:** Hangar, Tie Down  
**Accommodations:** Nearby

**Wind Indicator:** Cone  
**AWOS:** 931-431-3045 ASOS  
**From City:** 6 Miles NW  
**Coordinates:** N36°37.31 W87°24.90  
**Transportation:** Taxi, Rental & Courtesy Car  
**Remarks:** \*Rwy 5 Displ 402'  
 \*Rwy 23 Displ 503', \*MALS-Key Mic  
 Extensive Military Ops within Airport Area

# CLEVELAND REGIONAL JETPORT-RZR CLEVELAND - 10



## ELEVATION - 860'

RUNWAY	SURFACE	LENGTH	WIDTH	LIGHTS	VGI	REILS	APP LIGHTS	PATTERN
03/21	CONCRETE	5,500'	100'	MIRL	PAPI/ PAPI	Y/Y		Standard

COMMUNICATIONS				AWOS	NAVIGATION			
CTAF	UNICOM	GCO	ATC	FREQ	TYPE	IDENT	FREQ	DIR/DIST
122.7	122.7		125.1	120.475	VOR	GØ0	115.8	048°@23 NM

**FBO/Services:** Crystal Air  
**Contact:** Mark Fidler 423-472-4343  
**Attended:** 8:00-7:00 PM Mon-Sat, 12:30-7:30 PM Sun  
**Fuel:** 100LL/Jet A, 24/7  
**Repairs:** Major  
**Storage:** Tie Down, Hanger  
**Accommodations:** In Town

**Wind Indicator:** Cone  
**AWOS:** 423-479-6823  
**From City:** 2 Miles E  
**Coordinates:** N35°12.69 W84°47.99  
**Transportation:** Taxi, Rental & Crew Car  
**Remarks:**





**ELEVATION - 401'**

RUNWAY	SURFACE	LENGTH	WIDTH	LIGHTS	VGI	REILS	APP LIGHTS	PATTERN
02/20	ASPHALT	*4,200	75'					Standard

COMMUNICATIONS				AWOS	NAVIGATION			
CTAF	UNICOM	GCO	ATC	FREQ	TYPE	IDENT	FREQ	DIR/DIST
122.9	122.9		125.85 MEM CTR		VOR	JKS	109.4 MHz	122° @ 23.1 NM

**FBO/Services:** None  
**Contact:** Mike McClanahan 931-676-3370  
**Attended:** Unattended  
**Fuel:** None  
**Repairs:** None  
**Storage:** Tie Down  
**Accommodations:** In Town

**Wind Indicator:** Cone  
**AWOS:**  
**From City:** 1 Mile E  
**Coordinates:** N35°23.10W87°58.05  
**Transportation:**  
**Remarks:** \*Rwy 20 Displ 700'

# COLLEGEDALE MUNICIPAL-FGU COLLEGEDALE - 12



## ELEVATION - 860'

RUNWAY	SURFACE	LENGTH	WIDTH	LIGHTS	VGI	REILS	APP LIGHTS	PATTERN
03/21	ASPHALT	*5,003	75'	MIRL	VASI/ VASI	N/N		Standard

COMMUNICATIONS				AWOS	NAVIGATION			
CTAF	UNICOM	GCO	ATC	FREQ	TYPE	IDENT	FREQ	DIR/DIST
122.7	122.7		132.05 ATL CTR	122.7 AWOS-AV **	VOR BS	GQD WDDO	115.8 MHz 1340 KHz	052° @ 8.1 NM 219° @ 11 NM

**FBO/Services:** City of Collegedale  
 423-396-3135  
**Contact:** Chris Swain 423-236-5008  
**Attended:** 8:30-5:30 PM  
**Fuel:** 100LL, Jet A  
**Repairs:** Major  
**Storage:** Hangar, Tie Down  
**Accomodations:** 6 Miles from Airport

**Wind Indicator:** Cone  
**AWOS:** 423-236-4028, 3 Clicks for AWOS  
**From City:** 2 Miles SE  
**Coordinates:** N35°02.59 W85°01.31  
**Transportation:** Courtesy Car  
**Remarks:** Within Chatt. Class C Airspace  
 \*Rwy 03 Displ 400' \*\*3 clicks to activate.

**MAURY COUNTY-MRC COLUMBIA-MT. PLEASANT - 13**



**ELEVATION - 681'**

RUNWAY	SURFACE	LENGTH	WIDTH	LIGHTS	VGI	REILS	APP LIGHTS	PATTERN
06/24 17/35	ASPHALT TURF	6,003' 2,000'	100' 100'	MIRL NONE	PAPI/ PAPI NONE	Y/Y N/N	N/ODALS*	Standard Standard

COMMUNICATIONS				AWOS	NAVIGATION			
CTAF	UNICOM	GCO	ATC	FREQ	TYPE	IDENT	FREQ	DIR/DIST
122.8	122.8		125.85 MEM CTR	128.625	VOR BS	GHM WKRM	111.6 MHz 1340 KHz	138° @ 21.4 NM 236° @ 7 NM

**FBO/Services:** Maury County Airport Authority  
**Contact:** Paul Turner 931-379-5511  
**Attended:** 7:00 AM-Sundown  
**Fuel:** 100LL/Jet A 24/7  
**Repairs:** Major  
**Storage:** Hangar, Tie Down  
**Acomodations:** Motel, Restaurants in  
 Columbia & Mt. Pleasant

**Wind Indicator:** Tetrahedron, Cone  
**AWOS:** 931-379-0844  
**From City:** 2 Miles NE  
**Coordinates:** N35°33.26 W87°10.75  
**Transportation:** Taxi, Rental & Courtesy Car  
**Remarks:** \*N/ODALS Rwy 24 Key Mic 5 Times



**ELEVATION - 1787'**

RUNWAY	SURFACE	LENGTH	WIDTH	LIGHTS	VGI	REILS	APP LIGHTS	PATTERN
02/20	ASPHALT	*3,500	75'		VASI/ VASI			Right Traffic Rwy 20

COMMUNICATIONS				AWOS	NAVIGATION			
CTAF	UNICOM	GCO	ATC	FREQ	TYPE	IDENT	FREQ	DIR/DIST
122.9	122.9		133.1 ATL CTR		VOR BS	HRS WLSB	109.8 MHz 1400 KHz	282° @ 21.7 NM 046° @ 2 NM

**FBO/Services:** Whitewater Aviation  
**Contact:** Hans Van Ovost 423-496-9465  
**Attended:** Irregular  
**Fuel:** 100LL, 24/7  
**Repairs:** None  
**Storage:** Hangar, Tie Down  
**Accommodations:** In Town

**Wind Indicator:** Cone  
**AWOS:**  
**From City:** 3 Miles NE  
**Coordinates:** N35°00.95 W84°20.81  
**Transportation:** 423-496-5541 for Motel, Restaurant & Courtesy Car  
**Remarks:** High Terrain all Quadrants,  
 \*Rwy 02 Displ 90', Rwy 20 Displ 140'



**ELEVATION - 280'**

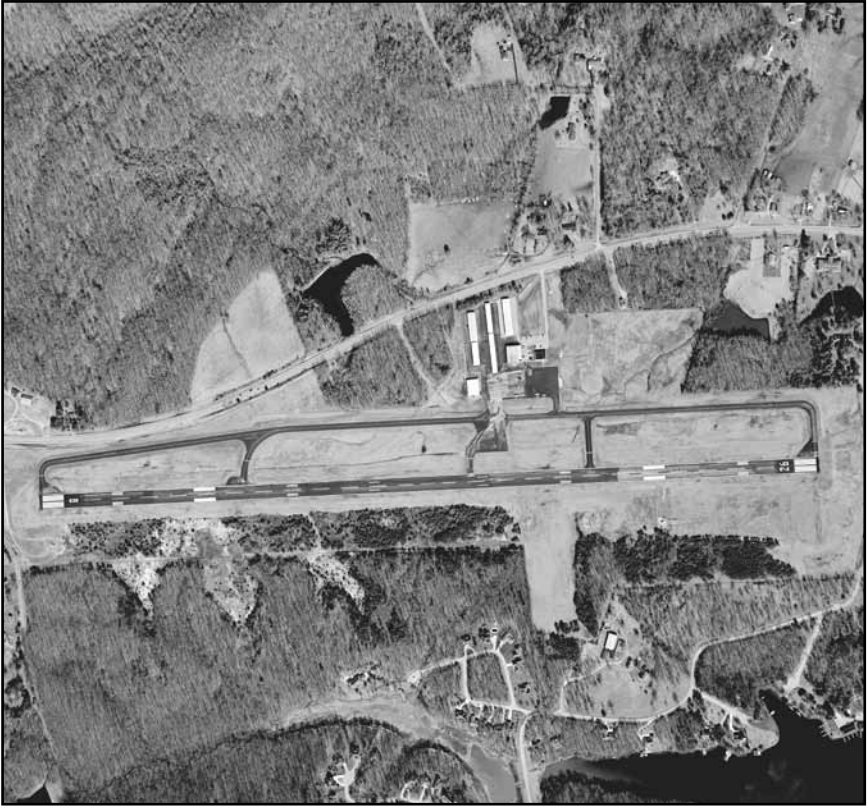
RUNWAY	SURFACE	LENGTH	WIDTH	LIGHTS	VGI	REILS	APP LIGHTS	PATTERN
01/19	ASPHALT	5,004'	100'	MIRL	PAPI/ PAPI	Y/Y		Standard

COMMUNICATIONS				AWOS	NAVIGATION			
CTAF	UNICOM	GCO	ATC	FREQ	TYPE	IDENT	FREQ	DIR/DIST
123.0	123.0		124.15 MEM DEP	118.575	VOR BS	DYR WKBL	116.8MHz 1250 KHz	204° @ 29.2 NM 092° @ 3 NM

**FBO/Services:** City of Covington  
**Contact:** Robin Anderson 901-476-1392  
**Attended:** Dawn-5:00 PM  
**Fuel:** 100LL/Jet A, 24/7  
**Repairs:** None  
**Storage:** Hangar, Tie Down  
**Accomodations:** In Town

**Wind Indicator:** Cone  
**AWOS:** 901-476-1705  
**From City:** 3 Miles NE  
**Coordinates:** N35°35.00 W89°35.23  
**Transportation:** Taxi, Courtesy Car  
**Remarks:**

CROSSVILLE MEMORIAL-WHITSON FLD-CSV **CROSSVILLE - 16**



**ELEVATION - 1881'**

RUNWAY	SURFACE	LENGTH	WIDTH	LIGHTS	VGI	REILS	APP LIGHTS	PATTERN
08/26	ASPHALT	5,418'	100'	HIRL	VASI/ PAPI	N/Y		Standard

COMMUNICATIONS				AWOS	NAVIGATION				
CTAF	UNICOM	RCO	ATC	FREQ	TYPE	IDENT	FREQ	DIR/DIST	
122.7	122.7	122.5 122.2	133.6 ATL CTR	ASOS 120.625	VOR BS	HCH WAEW	117.6 MHz 1330 KHz	335° @ 11.5 NM 269° @ 2 NM	

**FBO/Services:** Crossville Aero LLC  
 931-484-5016  
**Contact:** Chris Bennett 931-267-5214  
**Attended:** 8:00-Dark  
**Fuel:** 100LL/Jet A  
**Repairs:** Major  
**Storage:** Hangar, Tie Down  
**Accommodations:** In Town

**Wind Indicator:** Cone  
**AWOS:** 931-456-4406 ASOS  
**From City:** 3 Miles W  
**Coordinates:** N35°57.08 W85°05.10  
**Transportation:** Taxi, Rental Car  
**Remarks:** Pilot Controlled Lighting



**ELEVATION - 718'**

RUNWAY	SURFACE	LENGTH	WIDTH	LIGHTS	VGI	REILS	APP LIGHTS	PATTERN
03/21	ASPHALT	5,001'	100'	MIRL	PAPI/ PAPI	Y/Y		Standard

COMMUNICATIONS				AWOS	NAVIGATION			
CTAF	UNICOM	GCO	ATC	FREQ	TYPE	IDENT	FREQ	DIR/DIST
123.0	123.0		125.1 CHA APP	135.075	VOR NDB BS	HCH DTE WDNT	117.6 MHz 394 KHz 1280 KHz	175° @ 17.8 NM On Airport 078° @ 5 NM

**FBO/Services:** City of Dayton 423-775-8407  
**Contact:** Wanda Fulmer 423-775-8407  
**Attended:** 8:30-5:30 PM Sun 12:30-5:30 PM  
**Fuel:** 100LL/Jet A  
**Repairs:** Major  
**Storage:** Hangar, Tie Down  
**Accomodations:** In Town

**Wind Indicator:** Cone  
**AWOS:** 423-775-4695  
**From City:** 4 Miles E  
**Coordinates:** N35°29.18 W84°55.87  
**Transportation:** Courtesy Car  
**Remarks:** 133.6 ATL CTR 11:50PM-6 AM



**ELEVATION - 892'**

RUNWAY	SURFACE	LENGTH	WIDTH	LIGHTS	VGI	REILS	APP LIGHTS	PATTERN
17/35	ASPHALT	5,001'	75'	MIRL	PAPI/ PAPI	Y/Y		Standard

COMMUNICATIONS				AWOS	NAVIGATION			
CTAF	UNICOM	GCO	ATC	FREQ	TYPE	IDENT	FREQ	DIR/DIST
122.8	122.8		125.85 MEM CTR	123.875	VOR NDB BS	GHM DMZ WDKN	111.6 MHz 203 KHz 1260 KHz	360° @ 17.6 NM On Airport 292° @ 3 NM

**FBO/Services:** Liberty Aviation 615-446-5962

**Contact:** Mike Gallagher 615-446-5962

**Attended:** 8:00-6:00 PM Summer Hours

8:00-5:00 PM Winter Hours

**Fuel:** 100LL/Jet A

**Repairs:** Major

**Storage:** Hangar, Tie Down

**Accommodations:** In Town

**Wind Indicator:** Cone

**AWOS:** 615-446-5481

**From City:** 3 Miles NW

**Coordinates:** N36° 07.68 W87°25.79

**Transportation:** Taxi, Rental & Courtesy Car

**Remarks:**





### ELEVATION - 338'

RUNWAY	SURFACE	LENGTH	WIDTH	LIGHTS	VGI	REILS	APP LIGHTS	PATTERN
04/22 16/34	ASPHALT ASPHALT	*5,698' 4,001'	100' 75'	MIRL NONE	PAPI/ PAPI N/N	Y/Y N/N		Standard Standard

COMMUNICATIONS				AWOS	NAVIGATION			
CTAF	UNICOM	GCO	ATC	FREQ	TYPE	IDENT	FREQ	DIR/DIST
123.05	123.05	RCO 122.45 122.2	134.65 MEM CTR	135.625	VOR BS	DYR WDSG	116.8MHz 1450 KHz	251° @ 4.5 NM 205° @ 3 NM

**FBO/Services:** Dyersburg Regional Airport

**Contact:** Tommy Gibbons 731-287-8181

**Attended:** 7:00-7:00 PM

**Fuel:** 100LL/Jet A

**Repairs:** Major

**Storage:** Hangar, Tie Down

**Accommodations:** In Town

**Wind Indicator:** Cone

**AWOS:** 731-287-0300

**From City:** 2 Miles S

**Coordinates:** N35°59.88 W89°24.40

**Transportation:** Taxi, Rental, Courtesy Car

**Remarks:** \* Rwy 22, Displ. 694'



**ELEVATION - 780'**

RUNWAY	SURFACE	LENGTH	WIDTH	LIGHTS	VGI	REILS	APP LIGHTS	PATTERN
14/32	TURF	*2,200	145'	Cone				Standard Right Traffic for RW 14

COMMUNICATIONS				AWOS	NAVIGATION			
CTAF	UNICOM	GCO	ATC	FREQ	TYPE	IDENT	FREQ	DIR/DIST
122.9					VOR	SYI	109.0 MHz	312° @ 12NM

**FBO/Services:** Eagleville Soaring Club  
 800-306-6690  
**Contact:** Ron Tuttle 615-308-1580  
**Attended:** Weekends Only  
**Fuel:** None  
**Repairs:** None  
**Storage:** None  
**Accommodations:** In Town

**Wind Indicator:** Cone  
**AWOS:**  
**From City:** 4 Miles SE  
**Coordinates:** N35° 41.37 W86° 36.90  
**Transportation:** None  
**Remarks:** Extensive Glider Activity. Check Local NOTAMS. Glide Tow 123.5.\* Rwy 14 Displ 600'

# ELIZABETHTON MUNICIPAL-ØA9 ELIZABETHTON - 21



## ELEVATION - 1593'

RUNWAY	SURFACE	LENGTH	WIDTH	LIGHTS	VGI	REILS	APP LIGHTS	PATTERN
06/24	ASPHALT	*4,529'	70'		VASI/N	N/N		06 RH

COMMUNICATIONS				AWOS	NAVIGATION			
CTAF	UNICOM	GCO	ATC	FREQ	TYPE	IDENT	FREQ	DIR/DIST
123.0	123.0		125.25 TRI CITY APP	135.675	VOR BS	HMV WBEJ	114.6 MHz 1240 KHz	212° @ 45 NM 044° @ 3 NM

**FBO/Services:** City of Elizabethton 423-543-2801  
**Contact:** Dan Cogan 423-543-2801  
**Attended:** 7:30-9:30 PM 8:00-5:00 PM Winter Hours  
**Fuel:** 100LL, Jet A  
**Repairs:** Major  
**Storage:** Hangar, Tie Down  
**Accommodations:** In Town

**Wind Indicator:** Tetrahedron, Cone  
**AWOS:** 423-543-1801  
**From City:** 3 Miles NE  
**Coordinates:** N36° 22.27' W82° 10.41'  
**Transportation:** Taxi, Rental Car  
**Remarks:** High Terrain All Quadrants  
 \*Rwy 06 Displ 97'

# FAYETTEVILLE MUNICIPAL-FYM **FAYETTEVILLE - 22**



## ELEVATION - 984'

RUNWAY	SURFACE	LENGTH	WIDTH	LIGHTS	VGI	REILS	APP LIGHTS	PATTERN
02/20	ASPHALT	*5,900	100'	MIRL	PAPI/ PAPI	Y/ODALS		Standard

COMMUNICATIONS				AWOS	NAVIGATION			
CTAF	UNICOM	GCO	ATC	FREQ	TYPE	IDENT	FREQ	DIR/DIST
122.8	122.8	121.727	125.6 HSV APP	135.275	VOR NDB BS	RQZ TNY WEKR	112.2 MHz 358 KHz 1240 KHz	010° @ 16.1 NM 195° @ 4.7 NM 166° @ 7 NM

**FBO/Services:** Fayetteville Aviation, Inc.  
**Contact:** Mark Cobb 931-433-1960  
**Attended:** 8:00-5:00 PM 10:00-4:00 PM Sun  
**Fuel:** 100LL/Jet A  
**Repairs:** Major  
**Storage:** Hangar, Tie Down  
**Accommodations:** In Town

**Wind Indicator:** Cone  
**AWOS:** 931-433-5916  
**From City:** 6.5 Miles S  
**Coordinates:** N35°03.58 W86°33.84  
**Transportation:** Taxi, Rental Car  
**Remarks:** MEM CTR 120.8 12-6 AM  
 \*Rwy 02 Displ 400'



**ELEVATION - 515'**

RUNWAY	SURFACE	LENGTH	WIDTH	LIGHTS	VGI	REILS	APP LIGHTS	PATTERN
18/36	ASPHALT	3,500	75'			N/N		Standard

COMMUNICATIONS				AWOS	NAVIGATION			
CTAF	UNICOM	GCO	ATC	FREQ	TYPE	IDENT	FREQ	DIR/DIST
122.9	122.9				VOR	LVT	108.4 MHz	246° @ 25.6 NM

**FBO/Services:** None  
**Contact:** Jim Young 931-397-6643  
**Attended:** Unattended  
**Fuel:** None  
**Repairs:** None  
**Storage:** None  
**Accommodations:** In Town

**Wind Indicator:** Cone  
**AWOS:**  
**From City:** 3 Miles NE  
**Coordinates:** N36°23.81 W85°38.48  
**Transportation:** None  
**Remarks:** High Terrain All Quadrants



**ELEVATION - 583'**

RUNWAY	SURFACE	LENGTH	WIDTH	LIGHTS	VGI	REILS	APP LIGHTS	PATTERN
17/35	ASPHALT	6,301'	100'	MIRL	PAPI/ PAPI	Y/Y		Standard

COMMUNICATIONS				AWOS	NAVIGATION			
CTAF	UNICOM	GCO	ATC	FREQ	TYPE	IDENT	FREQ	DIR/DIST
123.05	123.05	130.075 GCO BNA CLNC	118.4 BNA APP	132.725	VOR BS	BNA WHIN	114.1 MHz 1010 KHz	045° @ 19.6 NM 136° @ 4NM

**FBO/Services:** GPO Aviation 615-451-1490  
**Contact:** 615-452-7248  
**Attended:** 4/1 - 11/1, 7-7:00 PM, 11/2 - 3/31, 7-5:00 PM  
**Fuel:** 100LL/Jet A  
**Repairs:** Minor  
**Storage:** Hangar, Tie Down  
**Accommodations:** In Town

**Wind Indicator:** Cone  
**AWOS:** 615-230-8005  
**From City:** 2 Miles E  
**Coordinates:** N36°22.61 W86°24.53  
**Transportation:** Taxi, Rental Car & Courtesy Car  
**Remarks:** Call in Advance for Any Special Services



**ELEVATION - 1608'**

RUNWAY	SURFACE	LENGTH	WIDTH	LIGHTS	VGI	REILS	APP LIGHTS	PATTERN
05/23	ASPHALT	6,001'	100'	MIRL	PAPI/ PAPI	Y/Y		23 RH

COMMUNICATIONS				AWOS	NAVIGATION			
CTAF	UNICOM	GCO	ATC	FREQ	TYPE	IDENT	FREQ	DIR/DIST
122.7	122.7		119.25 TRI APP	128.425	VOR NDB BS	SOT DYQ WGRV	108.8 MHz 263 KHz 1340 KHz	030° @ 26.8 NM 051° @ 5 NM 052° @ 2NM

**FBO/Services:** Greenville Aviation Services  
 423-639-6275  
**Contact:** Pam Smead 423-639-6275  
**Attended:** 8:00-8:00 PM  
**Fuel:** 100LL/Jet A  
**Repairs:** Major  
**Storage:** Hangar, Tie Down  
**Accomodations:** In Town

**Wind Indicator:** Cone  
**AWOS:** 423-639-5081  
**From City:** 2.0 Miles N  
**Coordinates:** N36°11.76 W82°48.66  
**Transportation:** Taxi, Rental & Courtesy Car  
**Remarks:**



**ELEVATION - 292'**

RUNWAY	SURFACE	LENGTH	WIDTH	LIGHTS	VGI	REILS	APP LIGHTS	PATTERN
18/36	ASPHALT	4,700'	75'					18 RH

COMMUNICATIONS				AWOS	NAVIGATION			
CTAF	UNICOM	GCO	ATC	FREQ	TYPE	IDENT	FREQ	DIR/DIST
122.9	122.9				VOR	DYR	116.8 MHz	206° @ 7.9 NM

**FBO/Services:** Town of Halls 731-836-9673  
**Contact:** Michael Walsh 731-460-1002  
**Attended:** Irregular  
**Fuel:** 100LL 24/7  
**Repairs:** None  
**Storage:** T-Hangars Tie Down  
**Accommodations:** None

**Wind Indicator:** Cone  
**AWOS:**  
**From City:** 2 NW  
**Coordinates:** N35°54.20 W89°23.84  
**Transportation:**  
**Remarks:**





**ELEVATION - 972'**

RUNWAY	SURFACE	LENGTH	WIDTH	LIGHTS	VGI	REILS	APP LIGHTS	PATTERN
02/20	ASPHALT	*4,001	75'	MIRL	PAPI/ PAPI	Y/Y		Standard

COMMUNICATIONS				AWOS	NAVIGATION			
CTAF	UNICOM	GCO	ATC	FREQ	TYPE	IDENT	FREQ	DIR/DIST
122.8	122.8		125.85 MEM CTR		VOR NDB BS	GHM JHG WMLR	111.6 MHz 257 KHz 1230 KHz	199° @ 18.7 NM 019° @ 5.3 NM 275° @ 4NM

**FBO/Services:** None  
**Contact:** Paul Bridges 931-628-9270  
**Attended:** Unattended  
**Fuel:** 100LL  
**Repairs:** None  
**Storage:** Hangar, Tie Down  
**Accommodations:** In Town

**Wind Indicator:** Cone  
**AWOS:**  
**From City:** 2 Miles W  
**Coordinates:** N35°32.76 W87°35.84  
**Transportation:** Courtesy Car  
**Remarks:** \*Rwy 20 Displ 500'



**ELEVATION - 421'**

RUNWAY	SURFACE	LENGTH	WIDTH	LIGHTS	VGI	REILS	APP LIGHTS	PATTERN
04/22	ASPHALT	4,003'	75'	MIRL	PAPI/ PAPI	Y/Y		Standard

COMMUNICATIONS				AWOS	NAVIGATION			
CTAF	UNICOM	GCO	ATC	FREQ	TYPE	IDENT	FREQ	DIR/DIST
122.8	122.8		134.65 MEM CTR		VOR BS	MKL WIRJ	112.0 MHz 740 KHz	006° @ 12.0 NM 111° @ 2NM

**FBO/Services:** City of Humboldt 731-784-2511

**Contact:** Benny Miller 731-618-9089

**Attended:** Daylight Hours

**Fuel:** 100LL/Jet A

**Repairs:** None

**Storage:** Hangar, Tie Down

**Accommodations:** In Town

**Wind Indicator:** Cone

**AWOS:**

**From City:** 3 Miles SE

**Coordinates:** N35°48.13 W88°52.50

**Transportation:** On Request

**Remarks:** For Services after Hours

Call 731-784-6859



### ELEVATION - 497'

RUNWAY	SURFACE	LENGTH	WIDTH	LIGHTS	VGI	REILS	APP LIGHTS	PATTERN
01/19	ASPHALT	5,507'	100'	MIRL	PAPI/ PAPI	Y/Y		Standard

COMMUNICATIONS				AWOS	NAVIGATION			
CTAF	UNICOM	GCO	ATC	FREQ	TYPE	IDENT	FREQ	DIR/DIST
122.8	122.8		134.65 MEM CTR	133.275	VOR NDB	JKS HZD	109.4 MHz 217 KHz	348° @29.8 NM On Airport

**FBO/Services:** Swor Aviation  
**Contact:** Tommy Swor 731-352-7278  
**Attended:** 8:00-5:00 PM 1:00-5:00 PM Sun  
**Fuel:** 100LL/Jet A  
**Repairs:** Major  
**Storage:** Hangar, Tie Down  
**Accommodations:** In Town

**Wind Indicator:** Cone  
**AWOS:** 731-352-2854  
**From City:** 4 Miles NW  
**Coordinates:** N36°05.36 W88°27.80  
**Transportation:** Taxi, Rental, Courtesy Car  
**Remarks:**



**ELEVATION - 1180'**

RUNWAY	SURFACE	LENGTH	WIDTH	LIGHTS	VGI	REILS	APP LIGHTS	PATTERN
05/23	ASPHALT	*4,000	75'	MIRL	PAPI/ PAPI	Y/Y		Standard

COMMUNICATIONS				AWOS	NAVIGATION			
CTAF	UNICOM	GCO	ATC	FREQ	TYPE	IDENT	FREQ	DIR/DIST
122.8	122.8		133.6 ATL CTR	124.975	VOR BS	VXV WLAF	116.4 MHz 1450 KHz	336° @ 28.8 NM 204° @ 4 NM

**FBO/Services:** Campbell County Aviation  
**Contact:** Bert Loupe 423-562-9966  
**Attended:** 9:00-5:00 PM Mon-Fri 9:00-3:00 PM Sat  
**Fuel:** 100LL 24/7  
**Repairs:** None  
**Storage:** Hangar, Tie Down  
**Accommodations:** In Town

**Wind Indicator:** Cone  
**AWOS:** 423-566-6474  
**From City:** 1 Mile E  
**Coordinates:** N36°20.05 W84°09.78  
**Transportation:** Taxi, Courtesy Car  
**Remarks:** \*Rwy 22 has 1.2% Downhill Slopes.  
 Suggest Rwy. 05 Right, Hand Traffic at Night



**ELEVATION - 434'**

RUNWAY	SURFACE	LENGTH	WIDTH	LIGHTS	VGI	REILS	APP LIGHTS	PATTERN
02/20	ASPHALT	6,006'	150'	HIRL	PAPI/	Y/Y	MALSR/N	Standard
11/29	ASPHALT	3,538'	100'	MIRL	PAPI/	N/N	N/N	Standard
					PAPI/			
					PAPI/			

COMMUNICATIONS				AWOS		NAVIGATION			
CTAF	UNICOM	GCO	ATC	FREQ	TYPE	IDENT	FREQ	DIR/DIST	
127.15 Tower 120.4 Grnd	122.95		134.65 MEM CTR	119.325 ASOS	VOR NDB BS	MKL MK WDAI	112.0 MHz 394 KHz 1310 KHz	On Airport 020° @ 5.4 NM 230° @ 7 NM	

**FBO/Services:** Madison Co. Arprt. Auth. 731-427-0191

**Contact:** Steve Smith 731-423-0995

**Attended:** Mon-Fri 6:00-8:30 PM, Sat 6:00-7:30 PM,

Sun 7:00-7:30 PM

**Fuel:** 100LL/Jet A

**Repairs:** Major

**Storage:** Hangar, Tie Down

**Accomodations:** In Town

**Wind Indicator:** Cone

**AWOS:** 731-424-0692 ASOS

**From City:** 4 Miles W

**Coordinates:** N35°35.99 W88°54.94

**Transportation:** Rental, Courtesy Car

**Remarks:** After Hours, 731-394-1755



**ELEVATION - 1694'**

RUNWAY	SURFACE	LENGTH	WIDTH	LIGHTS	VGI	REILS	APP LIGHTS	PATTERN
18/36	ASPHALT	3,498'	75'	MIRL*	PAPI/ PAPI	Y/Y		Standard

COMMUNICATIONS				AWOS	NAVIGATION			
CTAF	UNICOM	GCO	ATC	FREQ	TYPE	IDENT	FREQ	DIR/DIST
122.8	122.8		124.625 IND CTR		VOR BS	LVT WCLC	108.4 MHz 1260 KHz	145° @ 17.6 NM 180° @ 5 NM

**FBO/Services:** City of Jamestown 931-879-8948

**Contact:** Lonnie Hull 931-879-8948

**Attended:** 8:00-4:00 PM

**Fuel:** 100LL

**Repairs:** None

**Storage:** Hangar, Tie Down

**Accommodations:** In Town

**Wind Indicator:** Cone

**AWOS:**

**From City:** 5.0 Miles S

**Coordinates:** N36°20.98 W84°56.80

**Transportation:** Rental Car

**Remarks:** \*Pilot Controlled Lighting

MARION COUNTY - BROWN FLD-APT     **JASPER - 33**



**ELEVATION - 641'**

RUNWAY	SURFACE	LENGTH	WIDTH	LIGHTS	VGI	REILS	APP LIGHTS	PATTERN
04/22	ASPHALT	3,498'	75'	MIRL	PAPI/ PAPI	Y/Y		22 RH

COMMUNICATIONS				AWOS	NAVIGATION			
CTAF	UNICOM	GCO	ATC	FREQ	TYPE	IDENT	FREQ	DIR/DIST
122.8	122.8		119.2 CHA APP		VOR NDB BS	GQO APT WDCF	115.8 MHz 382 KHz 1370 KHz	285° @ 22.1 NM On Airport 275° @ 12 NM

**FBO/Services:** Marion County 423-942-5234  
**Contact:** Beth Gudger 423-942-5234  
**Attended:** 8:00-5:00 PM Sun 1:00-5:00 PM  
**Fuel:** 100LL/Jet A, Auto 87 Octane  
**Repairs:** None  
**Storage:** Hangar, Tie Down  
**Accommodations:** Nearby

**Wind Indicator:** Cone  
**AWOS:**  
**From City:** 4 Miles SE  
**Coordinates:** N35°03.64 W85°35.12  
**Transportation:** Taxi, Rental Car, Motel  
 Courtesy Car  
**Remarks:** 132.05 ATL CTR 11:50-6:00 AM, High  
 Terrain All Quadrants, Parachute Jumping



**ELEVATION - 1550'**

RUNWAY	SURFACE	LENGTH	WIDTH	LIGHTS	VGI	REILS	APP LIGHTS	PATTERN
04/22	ASPHALT	*3,000	50'					

COMMUNICATIONS				AWOS	NAVIGATION			
CTAF	UNICOM	GCO	ATC	FREQ	TYPE	IDENT	FREQ	DIR/DIST
122.8	122.8		123.9 TRI APP		VOR	HMV	114.6	247° @ 9.7

**FBO/Services:** None  
**Contact:** Airport, 423-781-2095  
**Attended:** Unattended  
**Fuel:** 100 LL Self-Service  
**Repairs:** None  
**Storage:** Tie Down  
**Accommodations:** In Town

**Wind Indicator:** Cone  
**AWOS:**  
**From City:** 3 Miles NE  
**Coordinates:** N36°21.82 W82°18.54  
**Transportation:**  
**Remarks:** \*Rwy 04 Thres Displ 800'





### ELEVATION - 833'

RUNWAY	SURFACE	LENGTH	WIDTH	LIGHTS	VGI	REILS	APP LIGHTS	PATTERN
8/26	ASPHALT	3,499'	75'	MIRL*	PAPI/ PAPI	Y/Y		Standard

COMMUNICATIONS				AWOS	NAVIGATION			
CTAF	UNICOM	GCO	ATC	FREQ	TYPE	IDENT	FREQ	DIR/DIST
126.6	122.95	121.7 TYS CLNC	123.9 TYS APP	125.375	VOR BS	VXV WUTK	116.4 MHz 850 KHz	019° @ 3.7 NM 145° @ 8 NM

**FBO/Services:** MCAA  
**Contact:** Tim Hair 865-577-4461  
**Attended:** 24 Hours  
**Fuel:** 100LL/Jet A  
**Repairs:** Major  
**Storage:** Hangar, Tie Down  
**Accommodations:** In Town

**Wind Indicator:** Cone  
**AWOS:** 865-579-6151  
**From City:** 3 Miles E  
**Coordinates:** N35°57.83 W83°52.42  
**Transportation:** Taxi, Rental & Courtesy Car  
**Remarks:** \*Pilot Controlled Lighting



### ELEVATION - 981'

RUNWAY	SURFACE	LENGTH	WIDTH	LIGHTS	VGI	REILS	APP LIGHTS	PATTERN
05L/23R 05R/23L	CONCRETE ASPHALT	9,005' *9,000'	150' 150'	HIRL HIRL		N/N Y/Y	MALSR1/ ALSF2 REIL/REIL	23R RH 05R RH

COMMUNICATIONS				AWOS		NAVIGATION			
CTAF	UNICOM	GCO	ATC	FREQ	TYPE	IDENT	FREQ	DIR/DIST	
121.2 Tower 121.9 Grnd CLNC Del 121.65	122.95	RCO 122.3		ATIS 128.35	VOR NDB BS	VXV TY WUTK	116.4 MHz 353 KHz 850 KHz	224° @ 7.4 NM 049° @ 5.9 NM 190° @ 16 NM	

**FBO/Services:** TAC AIR, INC. ARINC 128.9  
 865-970-3121  
**Contact:** 865-342-3088  
**Attended:** 24 Hours  
**Fuel:** 100LL/Jet A  
**Repairs:** Major  
**Storage:** Hangar, Tie Down  
**Acomodations:** Hotel on Airport

**Wind Indicator:** Cone  
**AWOS:** 865-981-4053 ASOS  
**From City:** 10 Miles S  
**Coordinates:** N35°48.66 W83°59.64  
**Transportation:** Limousine, Taxi, Rental & Courtesy Car  
**Remarks:** \*Rwy 23L Thres Displ 400'



**ELEVATION - 969'**

RUNWAY	SURFACE	LENGTH	WIDTH	LIGHTS	VGI	REILS	APP LIGHTS	PATTERN
01/19	ASPHALT	*5,200	75'	MIRL	PAPI/ PAPI	Y/Y		Standard

COMMUNICATIONS				AWOS	NAVIGATION			
CTAF	UNICOM	GCO	ATC	FREQ	TYPE	IDENT	FREQ	DIR/DIST
122.8	122.8		118.4 BNA APP		VOR BS	BWG WEEN	117.9 MHz 1460 KHz	141° @ 30.7 NM 241° @ 2 NM

**FBO/Services:** Stepcon Aviation 615-300-4901  
**Contact:** 615-666-6542  
**Attended:** 8:30-5:00 PM, 12:00-5:00 PM Sundays  
**Fuel:** 100LL/Jet A  
**Repairs:** Major  
**Storage:** Hangar, Tie Down  
**Accommodations:** In Town

**Wind Indicator:** Cone  
**AWOS:**  
**From City:** 2 Miles W  
**Coordinates:** N36°31.20 W86°03.48  
**Transportation:** Taxi, Rental Car  
**Remarks:** \*Rwy 01 Displ 200'



## ELEVATION - 936'

RUNWAY	SURFACE	LENGTH	WIDTH	LIGHTS	VGI	REILS	APP LIGHTS	PATTERN
17/35	ASPHALT	5,003'	100'	MIRL	PAPI/ PAPI	Y/Y		Standard

COMMUNICATIONS				AWOS	NAVIGATION			
CTAF	UNICOM	GCO	ATC	FREQ	TYPE	IDENT	FREQ	DIR/DIST
122.8	122.8		125.85 MEM CTR	120.175	VOR NDB BS	MSL LAT WDXE	116.5 MHz 269 KHz 1370 KHz	019° @ 33.6 NM On Airport 121° @ 3 NM

**FBO/Services:** L'burg-Lau Co. Arprt. Board  
**Contact:** Doris Venable 931-762-5133  
**Attended:** 8:00-5:00 PM  
**Fuel:** 100LL/Jet A  
**Repairs:** Minor  
**Storage:** Hangar, Tie Down  
**Accommodations:** In Town

**Wind Indicator:** Cone  
**AWOS:** 931-766-1585  
**From City:** 3 Miles NE  
**Coordinates:** N36°14.06 W87°15.48  
**Transportation:** Taxi, Rental & Courtesy Car  
**Remarks:** After Hours 931-242-8701



**ELEVATION - 588'**

RUNWAY	SURFACE	LENGTH	WIDTH	LIGHTS	VGI	REILS	APP LIGHTS	PATTERN
01/19 04/22	ASPHALT TURF	*5000 *1,801'	100' 150'	MIRL	PAPI/ PAPI	Y/Y		Standard Standard

COMMUNICATIONS				AWOS	NAVIGATION			
CTAF	UNICOM	GCO	ATC	FREQ	TYPE	IDENT	FREQ	DIR/DIST
122.725		GCO 135.075	118.4 BNA APP	118.325	VOR NDB BS	BNA JUE WCOR	114.1 MHz 414 KHz 900 KHz	082° @ 18.2 NM On Airport 252° @ 2 NM

**FBO/Services:** Redi-Air  
**Contact:** Myron Lasater 615-444-0031  
**Attended:** Daylight Hours  
**Fuel:** 100LL/Jet A  
**Repairs:** Major  
**Storage:** Hangar, Tie Down  
**Accommodations:** In Town

**Wind Indicator:** Cone  
**AWOS:** 615-444-5778  
**From City:** 2 Miles SW  
**Coordinates:** N36°11.42 W86°18.94  
**Transportation:** Taxi, Rental Car  
**Remarks:** After Hours 615-210-4660, \*Rwy 01 Displ 400', Rwy 22 Disp 600', \*Rwy 19 Thres Displ 500'



### ELEVATION - 717'

RUNWAY	SURFACE	LENGTH	WIDTH	LIGHTS	VGI	REILS	APP LIGHTS	PATTERN
02/20	ASPHALT	5,002'	75'	MIRL	VASI/ VASI	Y/Y		Standard

COMMUNICATIONS				AWOS	NAVIGATION			
CTAF	UNICOM	GCO	ATC	FREQ	TYPE	IDENT	FREQ	DIR/DIST
122.8	122.8		126.75 MEM CTR	135.775	VOR BS	SYI WJJM	109.0 MHz 1490 KHz	261° @ 18.2 NM 345° @ NM

**FBO/Services:** Big D Aviation  
**Contact:** Clay Derryberry 931-359-5001  
**Attended:** 8:00-5:00 PM Mon-Fri, Sat 8:00-3:00 PM Sun 1:00-5:00 PM  
**Fuel:** 100LL/Jet A 24/7  
**Repairs:** Major  
**Storage:** Hangar, Tie Down  
**Accommodations:** In Town

**Wind Indicator:** Cone  
**AWOS:** 931-270-1014  
**From City:** 3 Miles N  
**Coordinates:** N35°30.42 W86°48.23  
**Transportation:** Taxi  
**Remarks:**

# BEECH RIVER REGIONAL-PVE LEXINGTON/PARSONS - 41



## ELEVATION - 488'

RUNWAY	SURFACE	LENGTH	WIDTH	LIGHTS	VGI	REILS	APP LIGHTS	PATTERN
01/19	CONCRETE	6,000'	100'	PAPI/ PAPI	Y/Y	Y/Y		Standard

COMMUNICATIONS				AWOS	NAVIGATION			
CTAF	UNICOM	GCO	ATC	FREQ	TYPE	IDENT	FREQ	DIR/DIST
123.0	123.0		125.85 MEM CTR	118.125	VOR	JKS	109.4 MHz	065°@8.7 NM

**FBO/Services:** Beech River Airport Auth.  
**Contact:** John Jeter 731-845-5740  
**Attended:** 8:00-5:00 PM, 24/7, Except Holidays  
**Fuel:** 100LL/Jet A  
**Repairs:** Minor  
**Storage:** Hangar, Tie Down  
**Accommodations:** Motels in Town

**Wind Indicator:** Cone  
**AWOS:** 731-845-5738  
**From City:** 5 Miles NW  
**Coordinates:** N35°39.38 W88°11.72  
**Transportation:** Taxi, Rental & Courtesy Cars  
**Remarks:**



### ELEVATION - 740'

RUNWAY	SURFACE	LENGTH	WIDTH	LIGHTS	VGI	REILS	APP LIGHTS	PATTERN
18/36	ASPHALT	3,600'	75'	LIRL	PAPI/ PAPI	Y/Y		Standard

COMMUNICATIONS				AWOS	NAVIGATION			
CTAF	UNICOM	GCO	ATC	FREQ	TYPE	IDENT	FREQ	DIR/DIST
122.9	122.9				VOR BS	JKS WDXL	109.4 MHz 1490 KHz	088° @ 23.6 NM 092° @ 25 NM

**FBO/Services:**

**Contact:** John Carroll 931-589-2216

**Attended:** Unattended

**Fuel:** None

**Repairs:** None

**Storage:** T-Hangars, Tie Down

**Accommodations:** In Town

**Wind Indicator:** Cone

**AWOS:**

**From City:** 3 Miles SW

**Coordinates:** N35°35.75 W87°52.60

**Transportation:** Upon Request

**Remarks:** Call Ahead for Transportation





**ELEVATION - 1372'**

RUNWAY	SURFACE	LENGTH	WIDTH	LIGHTS	VGI	REILS	APP LIGHTS	PATTERN
03/21	ASPHALT	*5,152	75'	MIRL	PAPI/ PAPI	Y/Y		Standard

COMMUNICATIONS				AWOS	NAVIGATION			
CTAF	UNICOM	GCO	ATC	FREQ	TYPE	IDENT	FREQ	DIR/DIST
122.8	122.8	122.1R 108.4T	124.625 IND CTR	126.175	VOR BS	LVT WLIV	108.4 MHz 920 KHz	216° @ 12.4 NM 340° @ 1 NM

**FBO/Services:** Region Air LLC  
**Contact:** Edna Winningham 931-823-3671  
**Attended:** 8:00-5:00 PM  
**Fuel:** 100LL, Jet A+  
**Repairs:** None  
**Storage:** Hangar, Tie Down  
**Accommodations:** In Town

**Wind Indicator:** Cone  
**AWOS:** 931-823-3329  
**From City:** 2 Miles NE  
**Coordinates:** N36°24.81 W85°18.63  
**Transportation:** Taxi  
**Remarks:** Rwy 03 Thres Displ 145'



**ELEVATION - 1031'**

RUNWAY	SURFACE	LENGTH	WIDTH	LIGHTS	VGI	REILS	APP LIGHTS	PATTERN
05/23	ASPHALT	*3,643	75'	MIRL	PAPI/ PAPI	Y/Y		Standard

COMMUNICATIONS				AWOS	NAVIGATION			
CTAF	UNICOM	GCO	ATC	FREQ	TYPE	IDENT	FREQ	DIR/DIST
123.0	123.0		123.9 TYS APP	118.475	VOR BS	HCH WTPR	117.6 MHz 710 KHz	118° @ 32.5 NM 081° @ 018 NM

**FBO/Services:** Monroe County  
**Contact:** Brad Bivens 423-420-0563  
**Attended:** Irregular  
**Fuel:** 100LL, 24/7  
**Repairs:** Major  
**Storage:** Hangar, Tie Down  
**Accommodations:** In Town

**Wind Indicator:** Cone  
**AWOS:** 423-442-6170  
**From City:** 2 Miles NW  
**Coordinates:** N35°32.71 W84°22.82  
**Transportation:** Rental Car  
**Remarks:** \*Rwy 23 Disp 140'



**ELEVATION - 370'**

RUNWAY	SURFACE	LENGTH	WIDTH	LIGHTS	VGI	REILS	APP LIGHTS	PATTERN
08/26	ASPHALT	3,000'	75'		N/N	N/N		Standard

COMMUNICATIONS				AWOS	NAVIGATION			
CTAF	UNICOM	GCO	ATC	FREQ	TYPE	IDENT	FREQ	DIR/DIST
122.9	122.9				VOR BS	CKV WTPR	110.6 MHz 710 KHz	234° @ 30.5 NM 081° @ 18 NM

**FBO/Services:** Houston County  
**Contact:** George Clark 931-289-3633  
**Attended:** On Call  
**Fuel:** None  
**Repairs:** None  
**Storage:** Tie Down  
**Accommodations:** In Town

**Wind Indicator:** Cone  
**AWOS:**  
**From City:**  
**Coordinates:** N36°19.00 W87°55.00  
**Transportation:** None  
**Remarks:**

**WARREN COUNTY MEMORIAL-RNC MCMINNVILLE - 46**



**ELEVATION - 1032'**

RUNWAY	SURFACE	LENGTH	WIDTH	LIGHTS	VGI	REILS	APP LIGHTS	PATTERN
05/23	ASPHALT	*5,000	100'	MIRL	PAPI/ PAPI	Y/Y		Standard

COMMUNICATIONS				AWOS	NAVIGATION			
CTAF	UNICOM	GCO	ATC	FREQ	TYPE	IDENT	FREQ	DIR/DIST
122.8	122.8		126.75 MEM CTR	135.525	VOR BS	SYI WAKI	109.0 MHz 1230 KHz	075° @ 30.2 NM 280° @ 3 NM

**FBO/Services:** Warren County  
**Contact:** Richard Crawford 931-668-7056  
**Attended:** 8:00-6:00 PM  
**Fuel:** 100LL/Jet A  
**Repairs:** Major  
**Storage:** Hangar, Tie Down  
**Accommodations:** In Town

**Wind Indicator:** Cone  
**AWOS:** 931-668-7056  
**From City:** 3 Miles W  
**Coordinates:** N35°41.92 W85°50.63  
**Transportation:** Taxi, Rental & Courtesy Car  
**Remarks:** \*Rwy 23 Thres Displ 290'



**ELEVATION - 225'**

RUNWAY	SURFACE	LENGTH	WIDTH	LIGHTS	VGI	REILS	APP LIGHTS	PATTERN
17/35	ASPHALT	3,800'	75'	MIRL	PAPI / PAPI	Y/Y		17 RH

COMMUNICATIONS				AWOS	NAVIGATION			
CTAF	UNICOM	GCO	ATC	FREQ	TYPE	IDENT	FREQ	DIR/DIST
122.7	122.7		119.1 A 124.65 D MEM	122.7 AWOS-AV*	VOR	MEM	117.5 MHz	342° @ 11.6 NM

**FBO/Services:** Mem.-Shelby Co. Arprt Auth.  
**Contact:** Walter Cathey 901-358-0028  
**Attended:** 7:00-5:30 PM Mon-Fri  
**Fuel:** 100LL/Jet A  
**Repairs:** Major  
**Storage:** Hangar, Tie Down  
**Accommodations:** In Town

**Wind Indicator:** Cone  
**AWOS:** 901-354-9296  
**From City:** 6 Miles NW  
**Coordinates:** N35°12.04 W90°03.24  
**Transportation:** Taxi, Rental & Courtesy Car  
**Remarks:** Within Memphis Class B Airspace.  
 Tower 1 Mile NE. \*3 Clicks to Activate



**ELEVATION - 341'**

RUNWAY	SURFACE	LENGTH	WIDTH	LIGHTS	VGI	REILS	APP LIGHTS	PATTERN
09/27	CONCRETE	8,946'	150'	HIRL	PAPI		MALSR/MALSR	Standard
18L/36R	CONCRETE	9,000'	150'	HIRL	PAPI		MALSR/ALSF2	Standard
18R/ 36L	CONCRETE	9,320'	150'	HIRL	PAPI		MALSR/ALSF2	18R RH
18C/36C	CONCRETE	11,120'	150'	HIRL			MALSR/ALSF2	36C RH

COMMUNICATIONS				AWOS		NAVIGATION			
CTAF	UNICOM	GCO	ATC	FREQ	TYPE	IDENT	FREQ	DIR/DIST	
Tower 121.0 Gmd 121.00 121.65 Cl Del 125.2	122.95		119.1 125.8	ATIS 127.75	VOR NDB NDB	MEM ME TS	117.5 MHz 287 KHz 371 KHz	010° @ 1.7 NM 102° @ 4.8 NM 355° @ 5.4 NM	

**FBO/Services:** Signature, 901-345-4700 ARINC 129.87,

Wilson Air Center 901-345-2992 ARINC 129.275.

**Contact:** Scott Brockman 901-922-8077

**Attended:** 24 Hours

**Fuel:** 100LL/Jet A

**Repairs:** Major

**Storage:** Hangar, Tie Down

**Accommodations:** Near Airport

**Wind Indicator:** Cone

**AWOS:** 901-332-3679 ASOS

**From City:** 3 Miles S

**Coordinates:** N35°02.55 W89°58.60

**Transportation:** Limo, Taxi, Rental & Courtesy Cars

**Remarks:** Tower 118.3 (Rwy 9/27) 119.7 (Rwy

18L-36R/18C-36C) 128.425 (Rwy 18R-36L)



**ELEVATION - 247'**

RUNWAY	SURFACE	LENGTH	WIDTH	LIGHTS	VGI	REILS	APP LIGHTS	PATTERN
18/36 18U/36U*	ASPHALT ASPHALT	3,499' 1,600'	75' 75'	MIRL None	PAPI PAPI	Y/Y N/N	MIRL None	36 RH

COMMUNICATIONS				AWOS	NAVIGATION			
CTAF	UNICOM	GCO	ATC	FREQ	TYPE	IDENT	FREQ	DIR/DIST
122.8	122.8		125.8A 124.15D MEM	122.8 AWOS-AV**	VOR	MEM	117.5 MHz	008° @ 16.0 NM

**FBO/Services:** Mem - Shelby Co. Arprt. Auth.  
**Contact:** Walter Cathey 901-358-0028  
**Attended:** 5:00-3:30 PM Mon-Fri, 8:00-4:30 PM Sat-Sun  
**Fuel:** 100LL/Jet A  
**Repairs:** Major  
**Storage:** Hangar, Tie Down  
**Accommodations:** In Town

**Wind Indicator:** Cone  
**AWOS:** 901-873-0903  
**From City:** 4 Miles SW  
**Coordinates:** N35°16.74 W89°55.89  
**Transportation:** Taxi, Rental Car  
**Remarks:** \*Make prior arrangement for ultra-light only \*\*Within Memphis Class B Airspace 3 Clicks to Activate.

# MILLINGTON REGIONAL JETPORT-NQA **MILLINGTON - 50**



## ELEVATION - 319'

RUNWAY	SURFACE	LENGTH	WIDTH	LIGHTS	VGI	REILS	APP LIGHTS	PATTERN
04/22	CON/ ASPHALT	8,000'	200'	HIRL	PAPI/ PAPI	N/Y	P/MALS	22 RH

COMMUNICATIONS				AWOS		NAVIGATION			
CTAF	UNICOM	GCO	ATC	FREQ	TYPE	IDENT	FREQ	DIR/DIST	
Tower 120.25 Grnd 121.375	122.95		124.15 MEM APP	118.925	VOR NDB	MEM MIG	117.5 MHz 232 Khz	014° @ 21.2 NM 029° @ 5.6 NM	

**FBO/Services:** Tulsair Beechcraft 901-873-4780  
**Contact:** Roy Remington 901-873-5792  
**Attended:** Continuously Mon-Fri, Ops 5:00-2:00 AM  
 Tues-Fri, 5:30 AM-7:00 PM Weekends  
**Fuel:** 100LL/Jet A  
**Repairs:** Major  
**Storage:** Hangar, Tie Down  
**Accommodations:** Nearby

**Wind Indicator:** Cone  
**AWOS:** 901-873-3630  
**From City:** 1 Mile NE  
**Coordinates:** N35°21.40 W89°52.23  
**Transportation:** Rental Cars  
**Remarks:** Within Mem Class B Airspace Tower  
 After Hours, Check AFD





**ELEVATION - 1313'**

RUNWAY	SURFACE	LENGTH	WIDTH	LIGHTS	VGI	REILS	APP LIGHTS	PATTERN
05/23	ASPHALT	5,717'	100'	MIRL	PAPI/ PAPI	Y/Y	MALSF 05	Standard

COMMUNICATIONS				AWOS	NAVIGATION			
CTAF	UNICOM	GCO	ATC	FREQ	TYPE	IDENT	FREQ	DIR/DIST
122.8	122.8		132.8 TYS APP	126.725	VOR NDB BS	SOT .JXT WCRK	108.8 MHz 346 KHz 1150 KHz	330° @ 28.1 NM 054° @ 6.4 NM 240° @ 4 NM

**FBO/Services:** Morristown Air Service  
**Contact:** Ben Williamson 423-586-2483  
**Attended:** 8:00-Dusk  
**Fuel:** 100LL/Jet A  
**Repairs:** Major  
**Storage:** T-Hangar, Tie Down  
**Accommodations:** In Town

**Wind Indicator:** Cone  
**AWOS:** 423-587-5886  
**From City:** 4 Miles SW  
**Coordinates:** N36°10.76 W83°22.53  
**Transportation:** Taxi, Rental & Courtesy Car  
**Remarks:** PAPI Rwy 05. Key Mic 5 Times to Activate



**ELEVATION - 2240'**

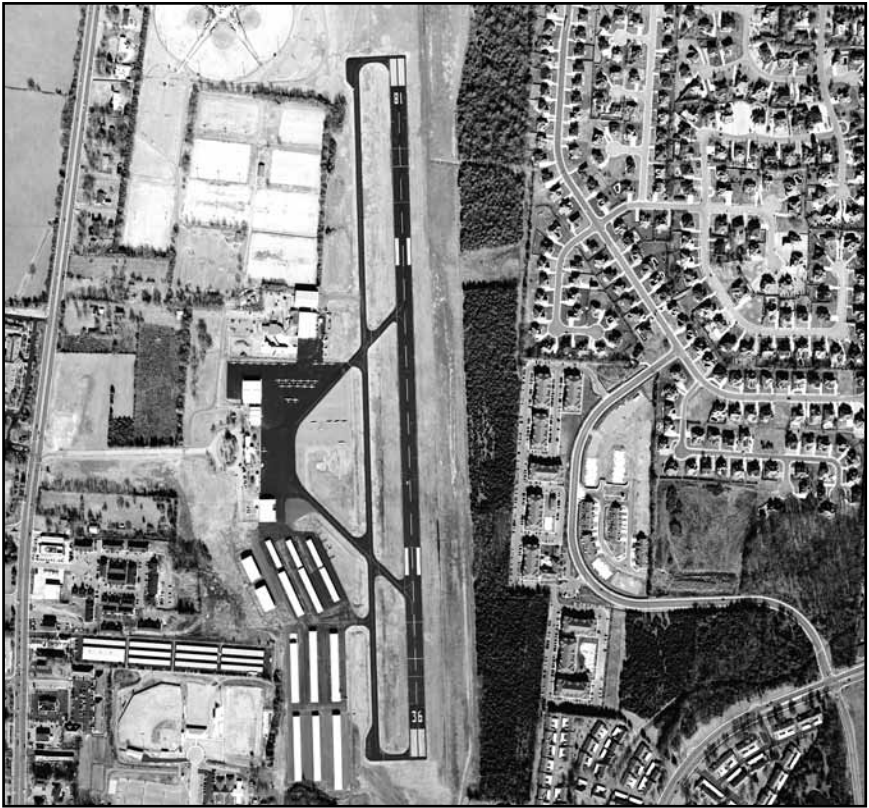
RUNWAY	SURFACE	LENGTH	WIDTH	LIGHTS	VGI	REILS	APP LIGHTS	PATTERN
06/24	ASPHALT	4,498'	75'	NSTD				06 RH

COMMUNICATIONS				AWOS	NAVIGATION			
CTAF	UNICOM	GCO	ATC	FREQ	TYPE	IDENT	FREQ	DIR/DIST
122.7	122.7		134.425 TRI CITY APP	126.225	VOR BS	HMV WMCT	114.6MHz 1390 KHz	098° @ 14.8 NM 202° @ 5 NM

**FBO/Services:** Doe Mountain Aviation Services  
**Contact:** Dave Garris 423-727-1223  
**Attended:** 10:00-5:00 PM  
**Fuel:** 100LL  
**Repairs:** Minor  
**Storage:** Hangar, Tie Down  
**Accommodations:** In Town

**Wind Indicator:** Cone  
**AWOS:** 423-727-4365  
**From City:** 4 Miles S  
**Coordinates:** N36°25.07 W81°49.51  
**Transportation:** Rental Car  
**Remarks:** High Terrain All Quadrants

# MURFREESBORO MUNICIPAL-MBT MURFREESBORO - 53



## ELEVATION - 614'

RUNWAY	SURFACE	LENGTH	WIDTH	LIGHTS	VGI	REILS	APP LIGHTS	PATTERN
18/36	ASPHALT	3,898'	100'	MIRL	VASI/ VASI	Y/Y		Standard

COMMUNICATIONS				AWOS	NAVIGATION			
CTAF	UNICOM	GCO	ATC	FREQ	TYPE	IDENT	FREQ	DIR/DIST
123.075	123.075	GCO 135.075	118.4 BNA APP	133.975	VOR NDB BS	SYI FOW WMTS	109.0 MHz 371 KHz 810 KHz	010° @ 19.1 NM 186° 5.0 NM 038° @ 3 NM

**FBO/Services:** City of Murfreesboro  
**Contact:** Chad Gehrke 615-848-3254  
**Attended:** 7:30-6:30 PM Mon-Sat, 9:00-6:30 PM Sun  
**Fuel:** 100LL/Jet A  
**Repairs:** Major  
**Storage:** Hangar, Tie Down  
**Accommodations:** In Town

**Wind Indicator:** Cone  
**AWOS:** 615-849-2622  
**From City:** 2 Miles N  
**Coordinates:** N35°52.65 W86°22.65  
**Transportation:** Taxi, Rental Car  
**Remarks:** Extensive Student Training Ops



### ELEVATION - 495'

RUNWAY	SURFACE	LENGTH	WIDTH	LIGHTS	VGI	REILS	APP LIGHTS	PATTERN
02/20	ASPHALT	*5,500	100'	MIRL	PAPI/ PAPI	Y/Y		20 RH

COMMUNICATIONS				AWOS	NAVIGATION			
CTAF	UNICOM	GCO	ATC	FREQ	TYPE	IDENT	FREQ	DIR/DIST
122.7	122.7	124.55 CLNC DEL	119.35 BNA APP	127.075	VOR BS	BNA WSM	114.1 MHz 650 KHz	288° @ 10.2 NM 340° @ 12 NM

**FBO/Services:** Corporate Flight Mat.  
**Contact:** Connie Dodson 615-350-5000  
**Attended:** 24 Hours  
**Fuel:** 100LL, Jet A  
**Repairs:** Major  
**Storage:** Hangar, Tie Down  
**Accomodations:** 4 Miles

**Wind Indicator:** Cone  
**AWOS:** 615-350-6222  
**From City:** 1 Miles NW  
**Coordinates:** N36°10.94 W86°53.20  
**Transportation:** Taxi, Rental & Courtesy Car  
**Remarks:** Pilot Controlled Lighting.  
 \*Rwy 20 Thres Displ 500'

# NASHVILLE INTERNATIONAL-BNA    **NASHVILLE - 55**



## ELEVATION - 599'

RUNWAY	SURFACE	LENGTH	WIDTH	LIGHTS	VGI	REILS	APP LIGHTS	PATTERN
02L/20R	CONCRETE	7,703'	150'	HIRL			ALSF-2/MALSF	Standard
02C/20C	CONCRETE	8,001'	150'	HIRL			MALSR/PAPI	Standard
02R/20L	CONCRETE	8,000'	150'	HIRL			ALSF-2/MALSR	Standard
13/31	CONCRETE	*11,030'	150'	HIRL			VASI/REIL	Standard

COMMUNICATIONS				AWOS		NAVIGATION		
CTAF	UNICOM	GCO	ATC	FREQ	TYPE	IDENT	FREQ	DIR/DIST
Tower 118.6 Grnd 121.9 CL DEL 126.05	122.95		118.4 119.35	ATIS 135.1	VOR BS	BNA WSM	114.1 MHz 650 KHz	On Airport 016° @ 10 NM

**FBO/Services:** Signature Flight Services, 615-361-3000 ARINC 131.1,  
Atlantic Aviation, 615-360-8109 ARINC 131.60

**Contact:** Aaron Evans 615-275-1605

**Attended:** 24 Hours

**Fuel:** 100LL, Jet A

**Repairs:** Major

**Storage:** Hangar, Tie Down

**Acomodations:** Nearby

**Wind Indicator:** Cone

**AWOS:** 615-360-6133 ASOS

**From City:** 6 miles SE

**Coordinates:** N36°07.47 W86°40.69

**Transportation:** Limo, Taxi, Bus, Rental & Courtesy Car

**Remarks:** \*Rwy 31 Thres Displ 741'

Rwy 13 Thres Displ 801'



**ELEVATION - 1545'**

RUNWAY	SURFACE	LENGTH	WIDTH	LIGHTS	VGI	REILS	APP LIGHTS	PATTERN
05/23	ASPHALT	5,506'	75'	MIRL	PAPI/ PAPI	Y/Y	RWY 23 ODAL	Standard

COMMUNICATIONS				AWOS	NAVIGATION			
CTAF	UNICOM	GCO	ATC	FREQ	TYPE	IDENT	FREQ	DIR/DIST
122.8	122.8		124.625 IND CTR	135.025	VOR BS	LVT WOCV	108.4 MHz 1310 KHz	107° @ 29.1 NM 240° @ 5 NM

**FBO/Services:** Scott County Arprt. Auth.  
**Contact:** Hank Duvall 423-569-8270  
**Attended:** 8:00-6:00 PM Mon-Sat, 12:30-6:00 PM Sunday  
**Fuel:** 100LL/ Jet A  
**Repairs:** Major  
**Storage:** Hangar, Tie Down  
**Accommodations:** In Town

**Wind Indicator:** Cone  
**AWOS:** 423-569-6651  
**From City:** 4 Miles SW  
**Coordinates:** N36°27.34 W84°35.15  
**Transportation:** Taxi, Rental & Courtesy Van  
**Remarks:**



**ELEVATION - 580'**

RUNWAY	SURFACE	LENGTH	WIDTH	LIGHTS	VGI	REILS	APP LIGHTS	PATTERN
02/20	ASPHALT	5,001'	100'	MIRL	PAPI/ PAPI	Y/Y	ODALS/N	Standard

COMMUNICATIONS				AWOS	NAVIGATION			
CTAF	UNICOM	GCO	ATC	FREQ	TYPE	IDENT	FREQ	DIR/DIST
123.0	123.0		134.65 MEM CTR	118.825	VOR NDB BS	JKS TIQ WTPR	109.4 MHz 410 KHz 710 KHz	356° @ 44.2 NM 016° 5.4 NM 306° @ 6 NM

**FBO/Services:** Henry County  
**Contact:** Don Davenport 731-644-7933  
**Attended:** 8:00-4:30 PM Mon-Sat  
**Fuel:** 100LL/Jet A 24/7  
**Repairs:** Major  
**Storage:** Hangar, Tie Down  
**Accommodations:** In Town

**Wind Indicator:** Cone  
**AWOS:** 731-644-0451  
**From City:** 3 Miles NW  
**Coordinates:** N36°20.16 W88°23.07  
**Transportation:** Taxi, Rental & Courtesy Car  
**Remarks:** Crosswinds Rwy closed, Parachute Jumping. To Increase Intensity & Activate ODALS, Key Mic 3-low/5-med/7-high



**ELEVATION - 817'**

RUNWAY	SURFACE	LENGTH	WIDTH	LIGHTS	VGI	REILS	APP LIGHTS	PATTERN
01/19	ASPHALT	5,000'	100'	MIRL	PAPI/ PAPI	Y/Y		Standard

COMMUNICATIONS				AWOS	NAVIGATION			
CTAF	UNICOM	GCO	ATC	FREQ	TYPE	IDENT	FREQ	DIR/DIST
122.8	122.8	GCO 121.725	119.35 BNA APP	118.175	VOR BS	BWG WHIN	117.9 MHz 1010 KHz	183° @ 20.2 NM 360° @ 10 NM

**FBO/Services:** Portland Airport Authority  
**Contact:** J.R. Rhodes 731-322-7500  
**Attended:** 8:00-5:00 PM  
**Fuel:** 100LL/Jet A  
**Repairs:** Major  
**Storage:** Tie Down  
**Accommodations:** In Town

**Wind Indicator:** Cone  
**AWOS:** 615-325-4971  
**From City:** 3 Miles NE  
**Coordinates:** N36°35.57 W86°28.62  
**Transportation:** None  
**Remarks:**





**ELEVATION - 689'**

RUNWAY	SURFACE	LENGTH	WIDTH	LIGHTS	VGI	REILS	APP LIGHTS	PATTERN
16/34	ASPHALT	*5,310	75'	MIRL	PAPI/ PAPI	Y/Y		Standard

COMMUNICATIONS				AWOS	NAVIGATION			
CTAF	UNICOM	GCO	ATC	FREQ	TYPE	IDENT	FREQ	DIR/DIST
122.8	122.8		125.85 MEM CTR	118.275	VOR BS	RQZ WKSR	112.2MHZ 1420 KHz	314° @ 29.9NM 174° @ 3NM

**FBO/Services:** Jones Flying Services  
**Contact:** Randy Jones 931-363-6827  
**Attended:** 8:00-8:00 PM, 12:00-Dusk Sunday  
**Fuel:** 100LL/Jet A  
**Repairs:** Minor  
**Storage:** Hangar, Tie Down  
**Accommodations:** In Town

**Wind Indicator:** Cone  
**AWOS:** 931-363-6760  
**From City:** 3 Miles SW  
**Coordinates:** N35°09.25 W87°03.42  
**Transportation:** Taxi, Rental Car  
**Remarks:** \*Rwy 34 Displ Thres 300'



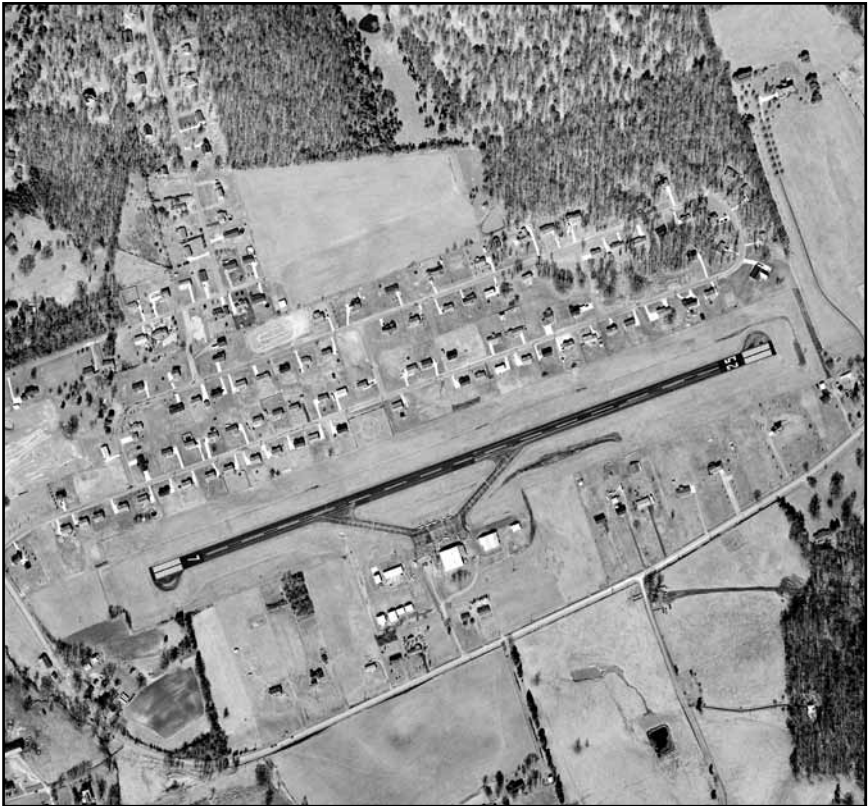
### ELEVATION - 1664'

RUNWAY	SURFACE	LENGTH	WIDTH	LIGHTS	VGI	REILS	APP LIGHTS	PATTERN
04/22	ASPHALT	5,000'	100'	MIRL	PAPI/ PAPI	Y/Y		Standard

COMMUNICATIONS				AWOS	NAVIGATION			
CTAF	UNICOM	GCO	ATC	FREQ	TYPE	IDENT	FREQ	DIR/DIST
122.8	122.8		133.6 ATL CTR	118.775	VOR BS WAAS	HCH	117.6 MHz 118.775 MHz	061° @ 16.4 NM

**FBO/Services:** Rockwood Aviation LLC  
**Contact:** Danny Collins 865-354-3023  
**Attended:** 9:00-5:00 PM  
**Fuel:** 100LL/Jet A  
**Repairs:** Major  
**Storage:** Tie Down  
**Accommodations:** In Town

**Wind Indicator:** Cone  
**AWOS:** 865-354-9269  
**From City:** 3 Miles N  
**Coordinates:** N35°55.34 W84°41.39  
**Transportation:** Taxi, Rental & Courtesy car  
**Remarks:** Taxing Aircraft not Visible from Ends of Runways



### ELEVATION - 1255'

RUNWAY	SURFACE	LENGTH	WIDTH	LIGHTS	VGI	REILS	APP LIGHTS	PATTERN
07/25	ASPHALT	3,500'	75'	MIRL	PAPI/ PAPI	Y/Y		Standard

COMMUNICATIONS				AWOS	NAVIGATION			
CTAF	UNICOM	GCO	ATC	FREQ	TYPE	IDENT	FREQ	DIR/DIST
122.8	122.8		119.25 TRI		VOR NDB BS	HMV RVN WRGS	114.6 MHz 329 KHz 1370 KHz	276° @ 36.6 NM On Airport 069° @ 5 NM

**FBO/Services:** Finley Aviation  
**Contact:** Mark Finley 423-345-0219  
**Attended:** 8:00-6:00 PM  
**Fuel:** 100 LL  
**Repairs:** Major  
**Storage:** Hangar, Tie Down  
**Accommodations:** In Town

**Wind Indicator:** Cone  
**AWOS:**  
**From City:** 6 Miles NE  
**Coordinates:** N36°27.46 W82°53.10  
**Transportation:** Courtesy & Rental Car  
**Remarks:** ATL Ctr 127.85 12:00-6:00 AM  
 High Terrain all Quadrants



**ELEVATION - 310'**

RUNWAY	SURFACE	LENGTH	WIDTH	LIGHTS	VGI	REILS	APP LIGHTS	PATTERN
18/36	TURF	*3,100	100'	Cone				RH18

COMMUNICATIONS				AWOS	NAVIGATION			
CTAF	UNICOM	GCO	ATC	FREQ	TYPE	IDENT	FREQ	DIR/DIST
122.9	122.9				VOR	HLI	112.4 MHz	343° @ 17.5 NM

**FBO/Services:** Wolf River  
**Contact:** Roy Degan 901-853-1558  
**Attended:** 8:00-5:00 PM  
**Fuel:** 100LL  
**Repairs:** None  
**Storage:** Hangar, Tie Down  
**Accommodations:** In Town

**Wind Indicator:** Cone  
**AWOS:**  
**From City:** 2 Miles W  
**Coordinates:** N35°03.24 W89°34.80  
**Transportation:** None  
**Remarks:** Within Memphis Class B Airspace  
 \*Rwy 18 Thres Displ 1000'

# SAVANNAH-HARDIN COUNTY-SNH SAVANNAH - 63



## ELEVATION - 473'

RUNWAY	SURFACE	LENGTH	WIDTH	LIGHTS	VGI	REILS	APP LIGHTS	PATTERN
01/19	CONC	5,000'	100'	MIRL	PAPI/ PAPI	Y/Y		Standard

COMMUNICATIONS				AWOS	NAVIGATION			
CTAF	UNICOM	GCO	ATC	FREQ	TYPE	IDENT	FREQ	DIR/DIST
122.8	122.8		124.35 MEM CTR	133.925	VOR BS	JKS WORM	109.4 MHz 1010 KHz	163° @ 26.6 NM 162° 5 NM

**FBO/Services:** Savannah-Hardin Arprt. Comm.  
**Contact:** Paul Jones 731-407-1940  
**Attended:** 8:00-6:00 PM Mon-Fri, 10:00-6:00 PM Sun  
**Fuel:** 100LL/Jet A  
**Repairs:** Major  
**Storage:** Hangar, Tie Down  
**Accommodations:** In Town

**Wind Indicator:** Cone  
**AWOS:** 731-925-6080  
**From City:** 3 Miles SE  
**Coordinates:** N35°10.22 W88°13.00  
**Transportation:** Rental, Courtesy Car, Taxi  
**Remarks:** After Hours 731-925-8670



### ELEVATION - 610'

RUNWAY	SURFACE	LENGTH	WIDTH	LIGHTS	VGI	REILS	APP LIGHTS	PATTERN
17/35	ASPHALT	5,002'	75'	MIRL	PAPI/ PAPI	Y/Y		Standard

COMMUNICATIONS				AWOS	NAVIGATION			
CTAF	UNICOM	GCO	ATC	FREQ	TYPE	IDENT	FREQ	DIR/DIST
122.7	122.7		124.35 MEM CTR	118.425	VOR BS	JKS WDTM	109.4 MHz 1150 KHz	194° @ 24.7 NM 100° @ 5 NM

**FBO/Services:** McNairy Co. Arprt. Auth.  
**Contact:** Chris Tull 731-645-3014  
**Attended:** 8:00-Dusk  
**Fuel:** 100LL/Jet A  
**Repairs:** Major  
**Storage:** Hangar, Tie Down  
**Accommodations:** In Town

**Wind Indicator:** Cone  
**AWOS:** 731-645-8184  
**From City:** 5 Miles NE  
**Coordinates:** N35°12.18 W88°29.90  
**Transportation:** Courtesy, Rental Car  
**Remarks:**

# GATLINBURG-PIGEON FORGE-GKT SEVIERVILLE - 65



## ELEVATION - 1014'

RUNWAY	SURFACE	LENGTH	WIDTH	LIGHTS	VGI	REILS	APP LIGHTS	PATTERN
10/28	ASPHALT	*5,506'	75'	MIRL	PAPI/ PAPI	Y/Y		Standard

COMMUNICATIONS				AWOS	NAVIGATION			
CTAF	UNICOM	GCO	ATC	FREQ	TYPE	IDENT	FREQ	DIR/DIST
123.0	123.0		132.8 TYS APP	126.875	VOR	VXV	116.4 MHz	102° @ 18.1 NM

**FBO/Services:** Gatlinburg Arprt. Auth.

**Contact:** Emily Haun 865-453-8393

**Attended:** 7:00 - 6:00 PM

**Fuel:** 100LL/Jet A

**Repairs:** Major

**Storage:** Hangar, Tie Down

**Accommodations:** In Town

**Wind Indicator:** Cone

**AWOS:** 865-429-5401

**From City:** 2 Mile SE

**Coordinates:** N35°51.47 W83°31.72

**Transportation:** Taxi, Rental Car

**Remarks:** Caution: High Terrain,

\*Rwy 28 Displ Thres 340'



**ELEVATION - 1953'**

RUNWAY	SURFACE	LENGTH	WIDTH	LIGHTS	VGI	REILS	APP LIGHTS	PATTERN
06/24	ASPHALT	*3,700	50'	MIRL	PAPI/ PAPI			Standard

COMMUNICATIONS				AWOS	NAVIGATION			
CTAF	UNICOM	GCO	ATC	FREQ	TYPE	IDENT	FREQ	DIR/DIST
122.8	122.8				VOR	SYI	109.0 MHz	130° @ 34.1 NM

**FBO/Services:** Crystal Air  
**Contact:** Rebecca Gibson 931-598-1910  
**Attended:** 8:00-5:00 PM  
**Fuel:** 100LL  
**Repairs:** None  
**Storage:** Hangar, Tie Down  
**Accommodations:** In Town

**Wind Indicator:** Cone  
**AWOS:**  
**From City:** 1 Mile E  
**Coordinates:** N35°12.31 W85°53.89  
**Transportation:** Courtesy Car  
**Remarks:** Portion of Rwy 24 has 1.8% Down Slope, \*Rwy 24 Displ Thres 200'



# BOMAR FLD-SHELBYVILLE MUNICIPAL-SYI SHELBYVILLE - 67



## ELEVATION - 801'

RUNWAY	SURFACE	LENGTH	WIDTH	LIGHTS	VGI	REILS	APP LIGHTS	PATTERN
18/36	ASPHALT	5,503'	100'	MIRL	PAPI/ PAPI	Y/Y		Standard

COMMUNICATIONS				AWOS	NAVIGATION			
CTAF	UNICOM	GCO	ATC	FREQ	TYPE	IDENT	FREQ	DIR/DIST
122.8	122.8	RCO 122.1R 109.0T	126.75 MEM CTR	119.275	VOR BS	SYI WHAL	109.0 MHz 1400 KHz	On Airport 359° @ 6 NM

**FBO/Services:** City of Shelbyville  
**Contact:** Hank Williamson 931-684-1669  
**Attended:** 7:00-7:00 PM  
**Fuel:** 100LL, Jet A  
**Repairs:** Major  
**Storage:** Hangar, Tie Down  
**Accommodations:** In Town

**Wind Indicator:** Tetrahedron, Cone  
**AWOS:** 931-685-4723  
**From City:** 4 Miles N  
**Coordinates:** N35°33.56 W86°26.55  
**Transportation:** Taxi, Rental & Courtesy Car  
**Remarks:** Pilot Controlled Intensity



**ELEVATION - 1084'**

RUNWAY	SURFACE	LENGTH	WIDTH	LIGHTS	VGI	REILS	APP LIGHTS	PATTERN
06/24	ASPHALT	*4,257	75'	MIRL	PAPI/ PAPI	Y/Y		Standard

COMMUNICATIONS				AWOS	NAVIGATION			
CTAF	UNICOM	GCO	ATC	FREQ	TYPE	IDENT	FREQ	DIR/DIST
122.8	122.8		132.9 MEM CTR		VOR BS	HCH WJLE	117.6 MHz 1480 KHz	289° @ 42.3 NM 06° @ 5 NM

**FBO/Services:** City of Smithville  
**Contact:** Wesley Nokes 615-597-4940  
**Attended:** 8:00-5:00 PM Tues-Sat, Unattended Sun-Mon  
**Fuel:** 100LL  
**Repairs:** Major  
**Storage:** Hangar, Tie Down  
**Accommodations:** In Town

**Wind Indicator:** Cone  
**AWOS:** None  
**From City:** 3 Miles NE  
**Coordinates:** N35°59.13 W85°48.55  
**Transportation:** Rental & Courtesy Car  
**Remarks:** \*Rwy 06 Displ Thres 151'



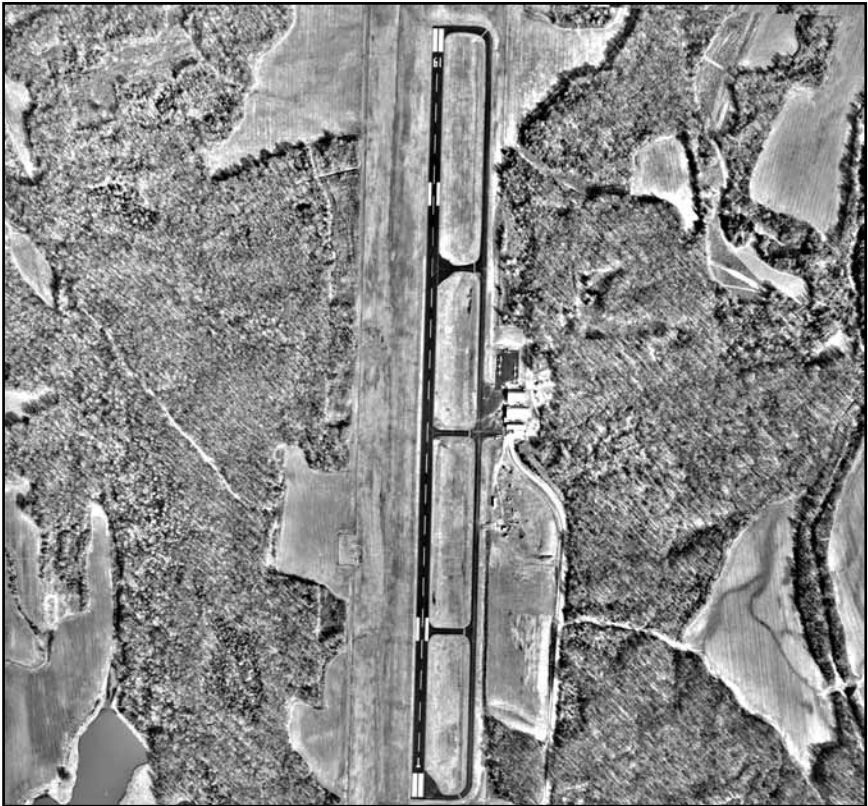
**ELEVATION - 543'**

RUNWAY	SURFACE	LENGTH	WIDTH	LIGHTS	VGI	REILS	APP LIGHTS	PATTERN
14/32 01/19	ASPHALT ASPHALT	8,048' 5,546'	150' 100'	HIRL MIRL	PAPI/ PAPI/ PAPI/ PAPI	Y/Y Y/Y	N/MALSR N/N	Standard Standard

COMMUNICATIONS				AWOS	NAVIGATION			
CTAF	UNICOM	GCO	ATC	FREQ	TYPE	IDENT	FREQ	DIR/DIST
Tower 118.5 Grnd 122.9	121.7	GCO 121.7	121.4 CLNC DEL	ASOS 119.125	VOR	BNA	114.1 Mhz	136° @ 11.1 NM

**FBO/Services:** Corporate Flight Management Inc. 615-220-2957  
 Smyrna Air Center 615-459-3337  
**Contact:** Lois Vallance 615-459-2651 + John Black 615-459-2651  
**Attended:** 24 Hours  
**Fuel:** 100LL/Jet A  
**Repairs:** Major  
**Storage:** Hangar, Tie Down  
**Accommodations:** In Town

**Wind Indicator:** Cone  
**AWOS:** 615-223-7716 ASOS  
**From City:** 2 Miles N  
**Coordinates:** N36°00.54 W86°31.21  
**Transportation:** Rental, Courtesy Car  
**Remarks:** Tower Ops 7:00-10 PM Mon-Fri & 7:00-7:00 S.S. Use CTAF When Tower Closed. Use GCO to obtain IFR Clearance When Tower Closed.



**ELEVATION - 436'**

RUNWAY	SURFACE	LENGTH	WIDTH	LIGHTS	VGI	REILS	APP LIGHTS	PATTERN
01/19	ASPHALT	5,000'	75'	MIRL	PAPI/ PAPI	Y/Y		Standard

COMMUNICATIONS				AWOS	NAVIGATION			
CTAF	UNICOM	GCO	ATC	FREQ	TYPE	IDENT	FREQ	DIR/DIST
122.9			124.15 MEM APP	119.875	VOR NDB	HLI FYE	112.4 MHz 255 KHz	008° @ 26.7 NM On Airport

**FBO/Services:** Fayette County  
**Contact:** David Booth 901-466-7007  
**Attended:** Daylight  
**Fuel:** 100LL & Jet A 24/7  
**Repairs:** Major  
**Storage:** Hangar, Tie Down  
**Accommodations:** In Town

**Wind Indicator:** Cone  
**AWOS:** 901-465-6367  
**From City:** 2 Miles SW  
**Coordinates:** N35°12.46 W89°23.67  
**Transportation:** By Request  
**Remarks:**

# UPPER CUMBERLAND REGIONAL-SRB SPARTA - 71



## ELEVATION - 1025'

RUNWAY	SURFACE	LENGTH	WIDTH	LIGHTS	VGI	REILS	APP LIGHTS	PATTERN
04/22	ASPHALT	*6,005' 6,705'	100'	HIRL	PAPI/ PAPI	Y/Y	ODALS 04	Standard

COMMUNICATIONS				AWOS	NAVIGATION			
CTAF	UNICOM	GCO	ATC	FREQ	TYPE	IDENT	FREQ	DIR/DIST
122.8	122.8	121.725	132.9 MEM CTR	128.250	VOR NDB BS	HCH HEM WHBV	117.6 MHz 233 KHz 1400 KHz	304° @ 31.6 NM 036° @ 4.9 NM 185° @ 7 NM

**FBO/Services:** Region Air Services 931-738-2122

**Contact:** Jim Kmet 931-739-7000

**Attended:** 7:00-Dark

**Fuel:** 100LL/Jet A

**Repairs:** Major

**Storage:** Hangar, Tie Down

**Accommodations:** In Town

**Wind Indicator:** Cone

**AWOS:** 931-738-3111

**From City:** 9 Miles NW

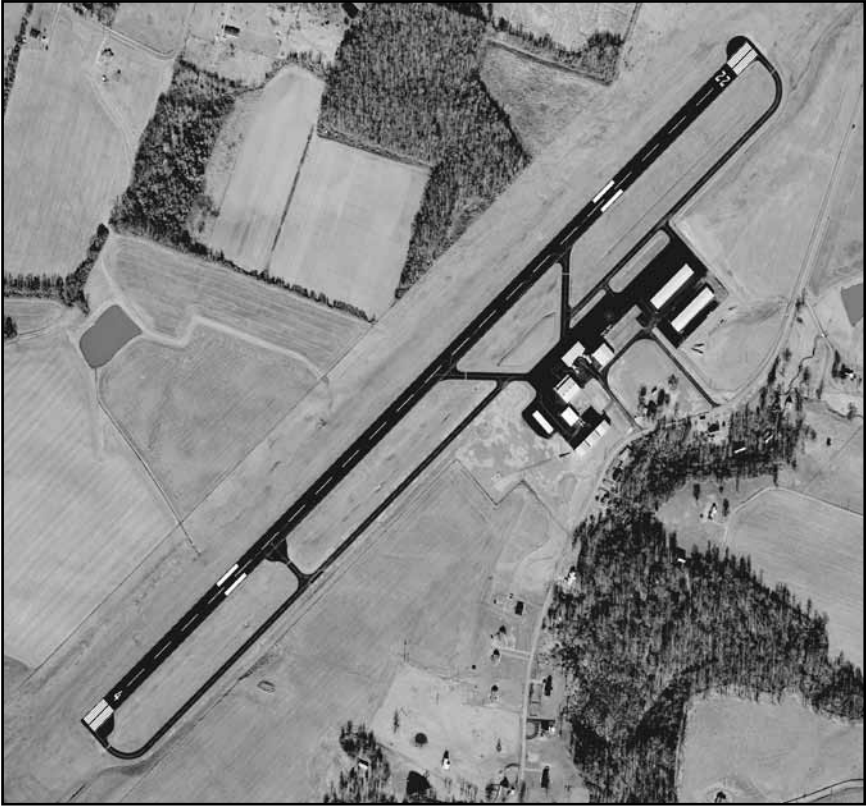
**Coordinates:** N36°03'36 W85°31.85

**Transportation:** Taxi, Rental & Courtesy Car

**Remarks:** Pilot Controlled Intensity

\*Displ Rwy 22 700'

SPRINGFIELD-ROBERTSON COUNTY-M91 **SPRINGFIELD - 72**



**ELEVATION - 706'**

RUNWAY	SURFACE	LENGTH	WIDTH	LIGHTS	VGI	REILS	APP LIGHTS	PATTERN
04/22	ASPHALT	5,505'	100'	MIRL	PAPI/ PAPI	Y/Y		Standard

COMMUNICATIONS				AWOS	NAVIGATION			
CTAF	UNICOM	GCO	ATC	FREQ	TYPE	IDENT	FREQ	DIR/DIST
123.0	123.0	121.725	119.35 BNA APP	120.675	VOR NDB BS	BNA PED WDBL	110.6 MHz 221 KHz 1590 KHz	103° @ 24.3 NM 343° @ 3 NM

**FBO/Services:** McCauley Aviation, Inc 931-738-2122  
**Contact:** Walter McCauley 615-384-4181  
**Attended:** 8:00-5:00 PM  
**Fuel:** 100LL/Jet A  
**Repairs:** Major  
**Storage:** Hangar, Tie Down  
**Accommodations:** In Town

**Wind Indicator:** Cone  
**AWOS:** 615-384-8206  
**From City:** 3 Miles NW  
**Coordinates:** N36°32.20 W86°55.27  
**Transportation:** Taxi, Courtesy Car  
**Remarks:** After Hours 615-384-6174



**ELEVATION - 1179'**

RUNWAY	SURFACE	LENGTH	WIDTH	LIGHTS	VGI	REILS	APP LIGHTS	PATTERN
07/25	ASPHALT	5,208'	75'	MIRL	PAPI/ PAPI	Y/Y		Standard

COMMUNICATIONS				AWOS	NAVIGATION			
CTAF	UNICOM	GCO	ATC	FREQ	TYPE	IDENT	FREQ	DIR/DIST
122.9					VOR BS	VXV WNTT	116.4 MHz 1250 KHz	31° @ 34.5 NM 145° @ 2 NM

**FBO/Services:** City of New Tazewell  
**Contact:** 423-262-2102  
**Attended:** 11:00-7:00 PM  
**Fuel:** 100LL  
**Repairs:** Major  
**Storage:** Hangar, Tie Down  
**Accomodations:** In Town

**Wind Indicator:** Cone  
**AWOS:**  
**From City:** 3 Miles SE  
**Coordinates:** N36°24.53 W83°33.43'  
**Transportation:**  
**Remarks:** High Terrain All Quadrants  
 Use CTAF to Activate PAPIs on Rwy's 07 & 25



**ELEVATION - 289'**

RUNWAY	SURFACE	LENGTH	WIDTH	LIGHTS	VGI	REILS	APP LIGHTS	PATTERN
01/19	ASPHALT	3,500'	75'					19 RH

COMMUNICATIONS				AWOS	NAVIGATION			
CTAF	UNICOM	GCO	ATC	FREQ	TYPE	IDENT	FREQ	DIR/DIST
122.9					VOR BS	LVT WENK	111.2 MHz 1240 KHz	97° @ 27.7 NM 280° @ 16 NM

**FBO/Services:** None  
**Contact:** Paul Perry 615-741-3208  
**Attended:** Unattended  
**Fuel:**  
**Repairs:** None  
**Storage:** Tie Down  
**Accommodations:**

**Wind Indicator:** Cone  
**AWOS:**  
**From City:** 9 Miles NE  
**Coordinates:** N36°28.52 W89°20.78  
**Transportation:**  
**Remarks:** Park Inn Closed, Maintain 2,000 AGL  
 Over Lake East of Arprt. (Nat. Wildlife Refuge)





**ELEVATION - 358'**

RUNWAY	SURFACE	LENGTH	WIDTH	LIGHTS	VGI	REILS	APP LIGHTS	PATTERN
01/19	ASPHALT	4,802'	75'	MIRL	PAPI/ PAPI	Y/Y		Standard

COMMUNICATIONS				AWOS	NAVIGATION			
CTAF	UNICOM	GCO	ATC	FREQ	TYPE	IDENT	FREQ	DIR/DIST
122.8	122.8		134.65 MEM CTN		VOR BS	DYR WKRJ	116.8 MHz 1600 KHz	100° @ 23.4 NM 275° @ 3 NM

**FBO/Services:** Gibson County  
**Contact:** Robert Lockard 731-723-9596  
**Attended:** Mon-Sat 9:00-5:00 PM, Unattended Sun.  
**Fuel:** 100LL/Jet A  
**Repairs:** None  
**Storage:** Hangar, Tie Down  
**Accommodations:** In Town

**Wind Indicator:** Cone  
**AWOS:**  
**From City:** 5 Miles SE  
**Coordinates:** N35°55.95 W88°50.94  
**Transportation:** Taxi, Rental Car  
**Remarks:**



**ELEVATION - 1084'**

RUNWAY	SURFACE	LENGTH	WIDTH	LIGHTS	VGI	REILS	APP LIGHTS	PATTERN
18/36	ASPH/CONC	4,200'	100'	MIRL	PAPI/PAPI	Y/Y	ODALS/N	Standard
09/27	TURF	2,693'	100'	Cone	N/N	N/N	NONE	Rwy 9 right
06/24	ASPH/CONC	*5,501'	100'	MIRL	PAPI/PAPI	Y/Y	ODALS/S	Rwy 27 left

COMMUNICATIONS				AWOS	NAVIGATION			
CTAF	UNICOM	GCO	ATC	FREQ	TYPE	IDENT	FREQ	DIR/DIST
123.0	123.0		126.75 MEM CTR	128.325	VOR VOR NDB	SYI UXM ULH	109.0 MHz 109.65 MHz 332 KHz	140° @ 14.4 NM On Airport 186° @ 4.9 NM

**FBO/Services:** Tullahoma Arpt. Auth.  
**Contact:** Jon Glass 931-455-3884  
**Attended:** Daylight Hours  
**Fuel:** 100LL/Jet A  
**Repairs:** Major  
**Storage:** Hangar, Tie Down  
**Accommodations:** In Town

**Wind Indicator:** Cone  
**AWOS:** 931-454-2052  
**From City:** 2 Miles NW  
**Coordinates:** N35°22.80 W86°14.80  
**Transportation:** Taxi, Rental Car  
**Remarks:** \*Rwy 24 Thres Displ 500',  
 Rwy 36 Threshold Relocated 800'



### ELEVATION - 346'

RUNWAY	SURFACE	LENGTH	WIDTH	LIGHTS	VGI	REILS	APP LIGHTS	PATTERN
01/19	ASPHALT	6,503'	100'	MIRL	PAPI/ PAPI	Y/Y	ODALS/N	Standard

COMMUNICATIONS				AWOS	NAVIGATION			
CTAF	UNICOM	GCO	ATC	FREQ	TYPE	IDENT	FREQ	DIR/DIST
122.7	122.7		134.65 MEM CTR	135.325	VOR NDB BS	DYR UC WENK	116.8 MHz 212 KHz 1240 KHz	034° @ 27.0 NM 005° @ 4.9 NM 127° @ 4 NM

**FBO/Services:** Everett-Stewart Reg. Arprt. Board  
**Contact:** Jo Ann Speer 731-885-1221  
**Attended:** Daylight Hours  
**Fuel:** 100LL/Jet A  
**Repairs:** Major  
**Storage:** Hangar, Tie Down  
**Accommodations:** In Town

**Wind Indicator:** Cone  
**AWOS:** 731-885-9161  
**From City:** 4 Miles SE  
**Coordinates:** N36°22.78 W88°59.14  
**Transportation:** Rental, Courtesy Car  
**Remarks:**



**ELEVATION - 756'**

RUNWAY	SURFACE	LENGTH	WIDTH	LIGHTS	VGI	REILS	APP LIGHTS	PATTERN
03/21	ASPHALT	4,000'	75'	MIRL	PAPI/ PAPI	Y/Y		Standard

COMMUNICATIONS				AWOS	NAVIGATION			
CTAF	UNICOM	GCO	ATC	FREQ	TYPE	IDENT	FREQ	DIR/DIST
122.8	122.8		125.85 MEM CTR		VOR NDB BS	GHM AEY WPHC	111.6 MHz 329 KHz 1060 KHz	318° @ 21.9 NM On Airport 063° @ 5 NM

**FBO/Services:** Humphreys County  
**Contact:** Jeff Fincher 931-296-2719  
**Attended:** 8:00-5:00 PM  
**Fuel:** 100LL/Jet A 24/7  
**Repairs:** None  
**Storage:** Hangar, Tie Down  
**Accommodations:** In Town

**Wind Indicator:** Cone  
**AWOS:**  
**From City:** 3 Miles NE  
**Coordinates:** N36°07.00 W87°44.29  
**Transportation:** Courtesy Car  
**Remarks:** Parachute Jumping

# WINCHESTER MUNICIPAL-BGF      WINCHESTER - 79



## ELEVATION - 979'

RUNWAY	SURFACE	LENGTH	WIDTH	LIGHTS	VGI	REILS	APP LIGHTS	PATTERN
18/36	ASPHALT	5,002'	75'	MIRL	PAPI/ PAPI	Y/Y		Standard

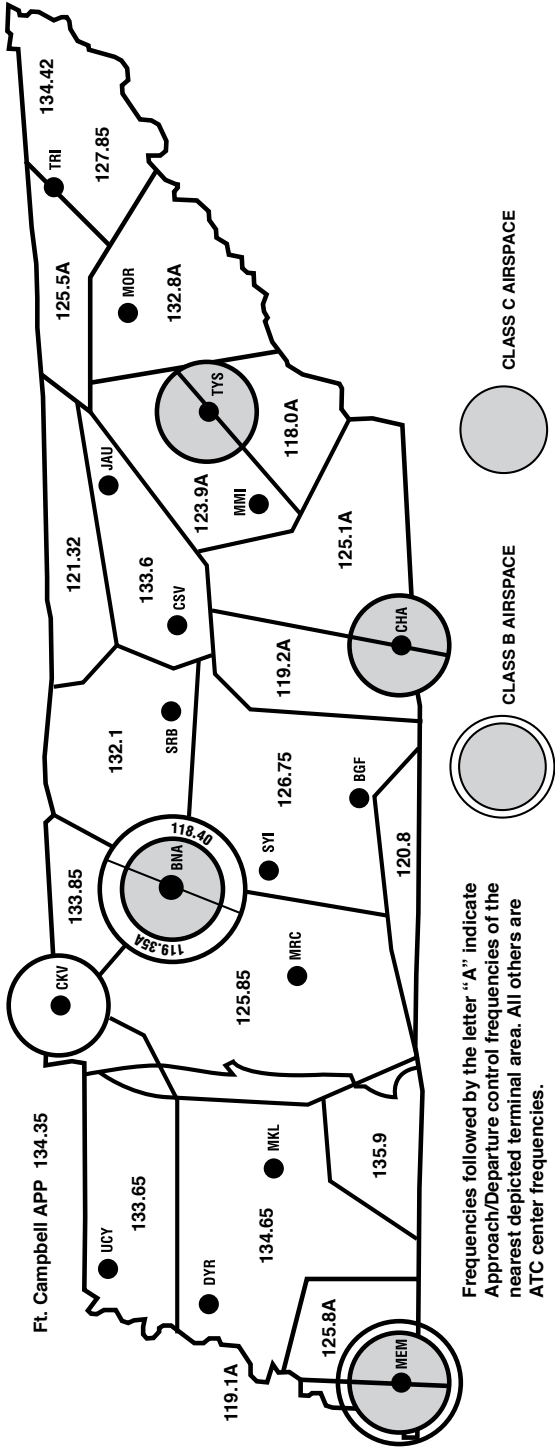
COMMUNICATIONS				AWOS	NAVIGATION			
CTAF	UNICOM	GCO	ATC	FREQ	TYPE	IDENT	FREQ	DIR/DIST
122.8	122.8	121.725	126.75 MEM CTR	121.675	VOR NDB BS	SYI BGF WCDT	109.0 MHz 263 KHz 1340 KHz	142° @ 29.4 NM On Airport 090° @ 2 NM

**FBO/Services:** Winchester Arprt. Auth.  
**Contact:** Zachary Colescott 931-967-3148  
**Attended:** 8:00-Dusk  
**Fuel:** 100LL/Jet A 24/7  
**Repairs:** None  
**Storage:** Hangar, Tie Down  
**Accommodations:** In Town

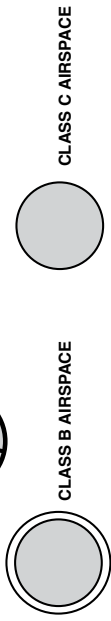
**Wind Indicator:** Cone  
**AWOS:** 931-967-8445  
**From City:** 3 Miles SE  
**Coordinates:** N35°10.65 W86°03.97  
**Transportation:** Courtesy & Rental Car  
**Remarks:**

# CENTER/APPROACH FREQUENCIES BY SECTOR

Center and approach frequencies commonly available to pilots by approximate geographic area.  
(Not to Scale)



Frequencies followed by the letter "A" indicate Approach/Departure control frequencies of the nearest depicted terminal area. All others are ATC center frequencies.



## Notes

## Notes



