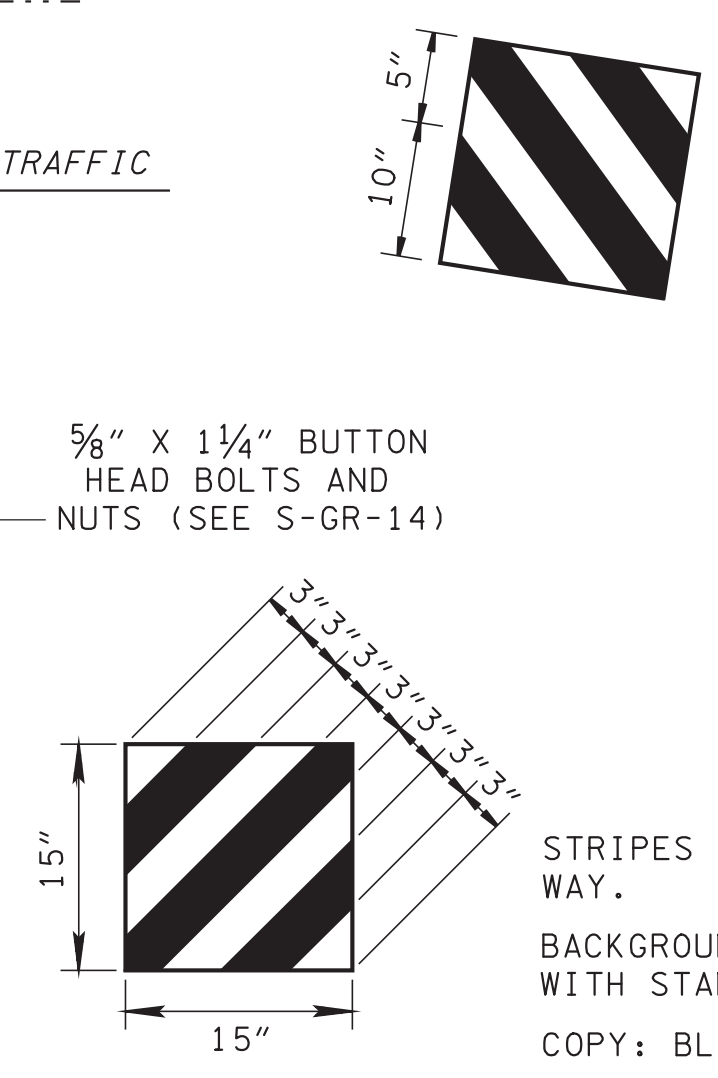


- REV. 2-14-96: REMOVED GROUND STRUT DETAILS FROM SHEET AND MADE OTHER MINOR CHANGES.
- REV. 5-27-96: CHANGED DIAMETER OF HOLES IN 8" X 6" SLOTTED BEARING PLATE FROM 5/8" TO 3/4".
- REV. 5-27-98: REPLACED SHELF ANGLE WITH BACK UP PLATE ON POST NO. 2.
- REV. 12-18-98: MODIFIED OLD GENERAL NOTE (A2) AND COMBINED IT WITH OLD GENERAL NOTE (A3) TO MAKE NEW GENERAL NOTE (A3).
- REV. 5-27-01: CHANGED PAY ITEM NO. 705-04.21 TO 705-04.04. ADDED SPECIAL GUARDRAIL INSTALLATION NOTE.
- REV. 7-1-01: CHANGED SPECIAL GUARDRAIL INSTALLATION NOTE.
- REV. 9-5-01: CHANGED HEADING FOR SPECIAL INSTALLATION NOTE.
- REV. 10-26-07: REMOVED SPECIAL INSTALLATION NOTE. ADDED GENERAL NOTE (E).
- REV. 3-15-08: RENAMED TITLE BLOCK.
- REV. 8-23-12: ADDED SPECIAL INSTALLATION NOTE.



STRIPES AT 45° TOWARD THE TRAVELED WAY.  
 BACKGROUND: YELLOW (IN ACCORDANCE WITH STANDARD SPECIFICATION 916.06)  
 COPY: BLACK

- ### GENERAL NOTES
- (A) TO BE USED ON LOCAL ROADS ONLY. NOT TO BE USED ON INTERSTATE OR STATE HIGHWAY SYSTEM. THE SLOTTED RAIL TERMINAL (TYPE 21) TERMINAL ANCHOR, SHALL BE USED ONLY ON LOW SPEED ROADS < 40 MI. PAYMENT IS TO BE MADE UNDER ITEM 705-04.04 GUARDRAIL TERMINAL (TYPE 21).
  - (B) THE EARTH PAD MUST BE CONSTRUCTED PER STANDARD DRAWING NO. S-GR-39 FOR ALL NEW GRADE AND DRAIN PROJECTS.
  - (C) THE POST OFFSET DIMENSIONS ARE GIVEN TO THE CENTER OF THE TRAFFIC FACE OF THE BLOCKOUTS, EXCEPT AT THE FIRST TWO POSTS, WHERE THE DIMENSION IS TO THE CENTER OF THE TRAFFIC FACE OF THE POST. OFFSET POINTS ARE TO BE LOCATED BY CHORD MEASUREMENTS AT THE BACK OF THE RAIL EQUAL TO THE NOMINAL POST SPACINGS SHOWN. POSTS ARE TO BE SET APPROXIMATELY RADIAL TO THE RAILINGS AT EACH POST LOCATION.
  - (D) OMIT THE RECTANGULAR WASHER BETWEEN BUTTON HEAD BOLT AND RAIL ON POST NOS. 2 THROUGH 6.
  - (E) SAFETY PERFORMANCE OF SLOTTED GUARDRAIL TERMINAL IS ACCEPTABLE ACCORDING TO THE TL-2 EVALUATION CRITERIA SPECIFIED IN NCHRP REPORT 350.

### SPECIAL INSTALLATION NOTE

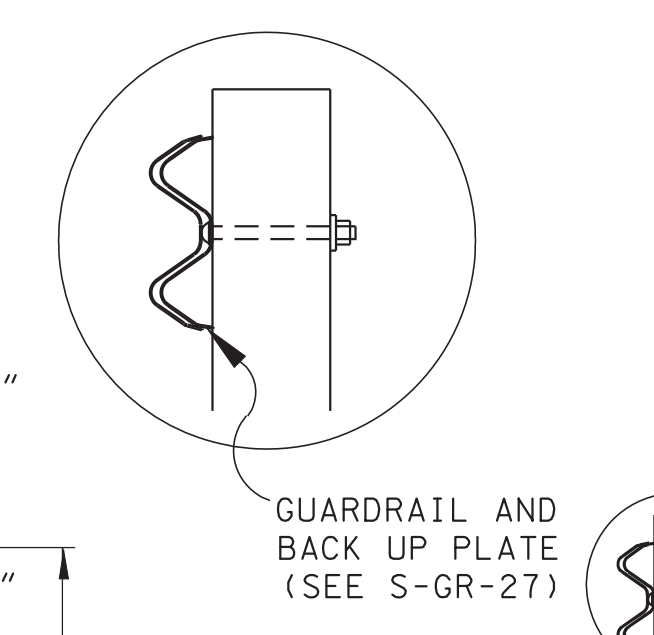
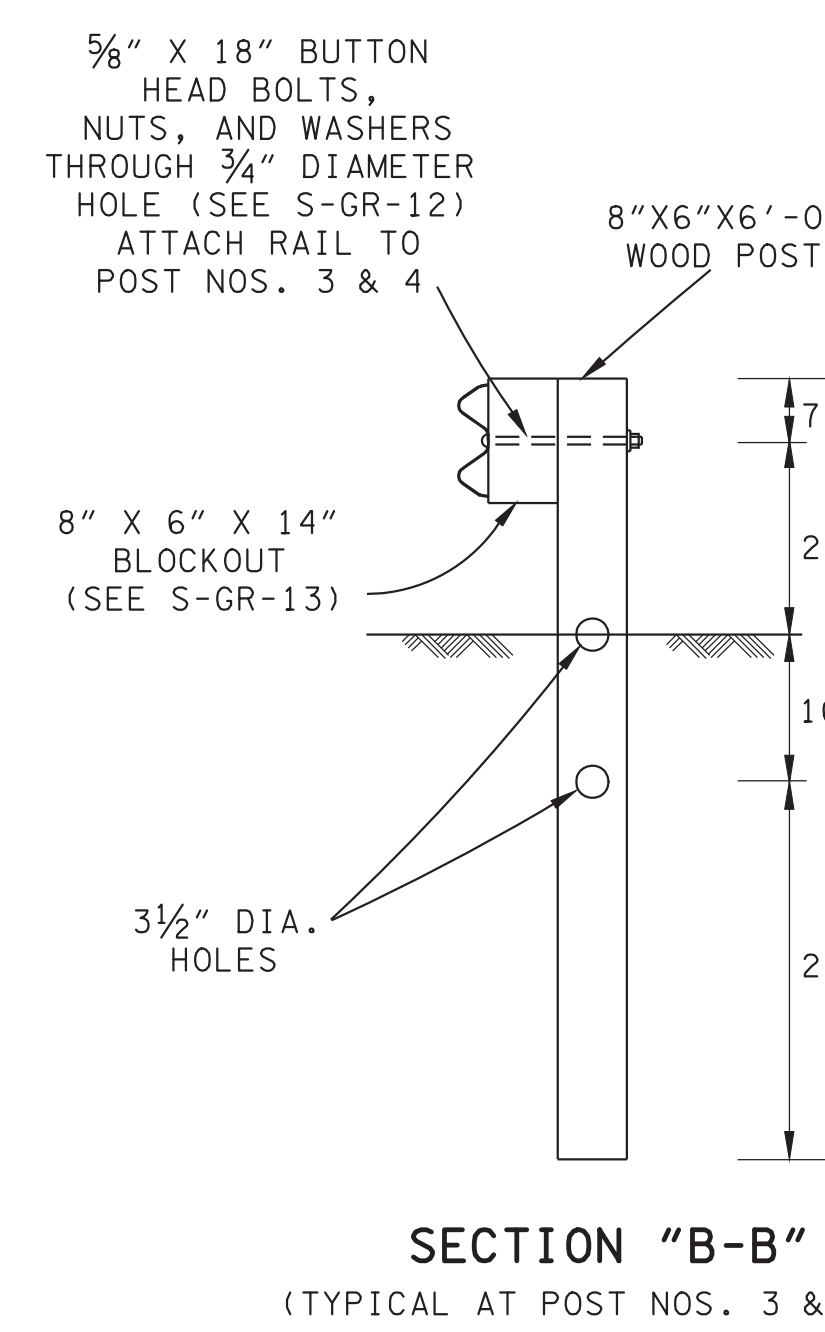
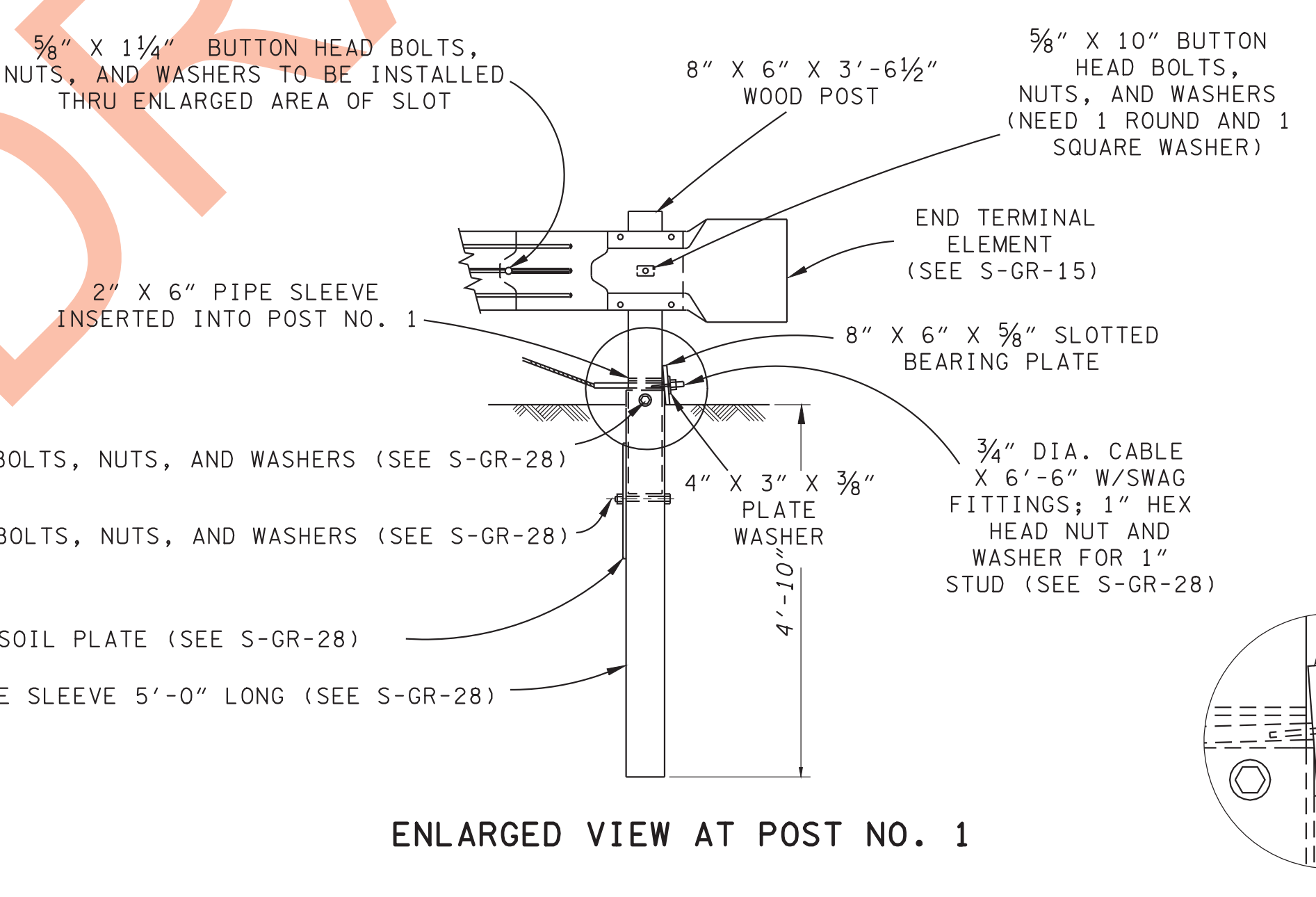
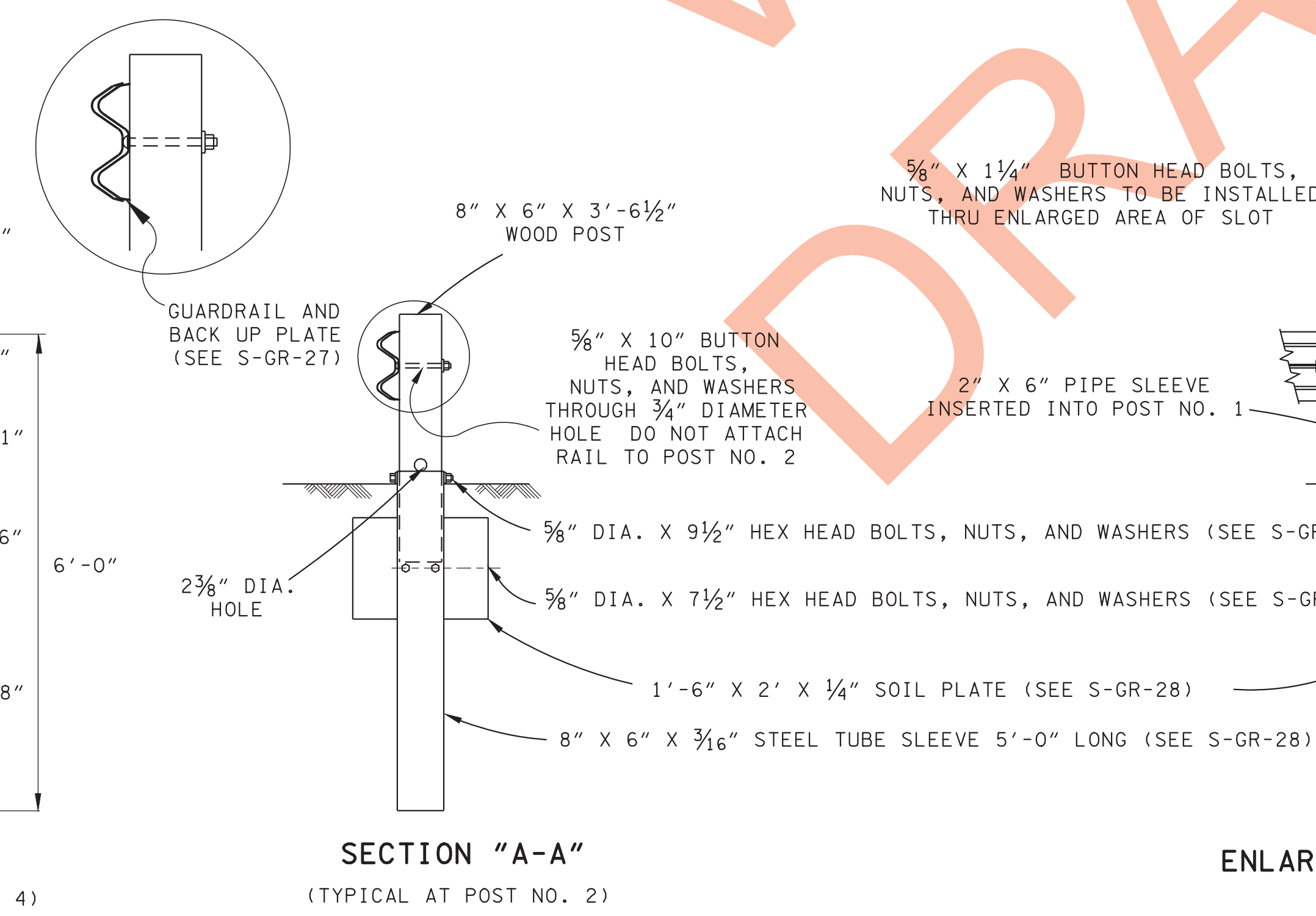
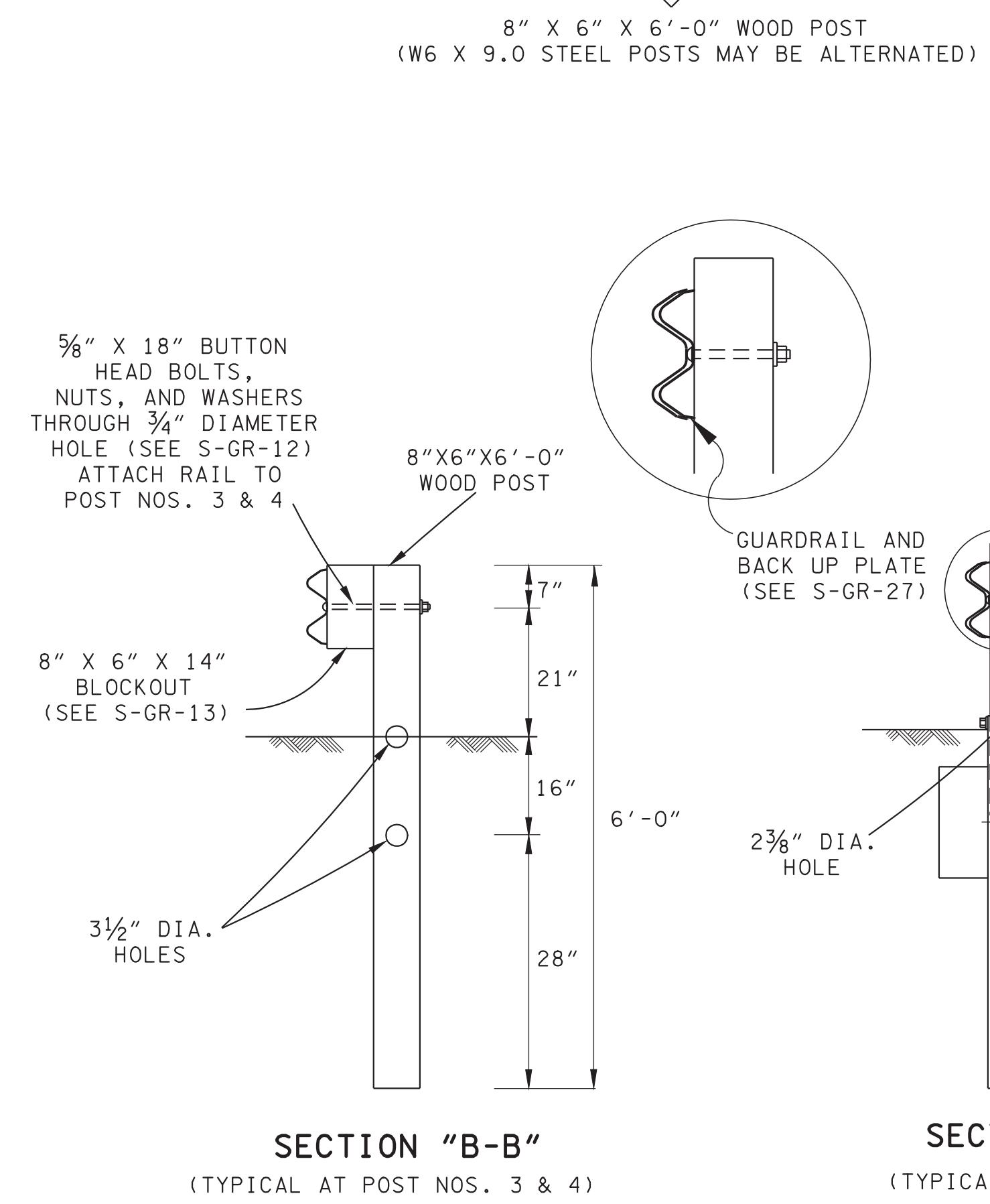
ANY NCHRP 350 COMPLIANT TL-3 TANGENTIAL END TERMINAL ON THE TDOT QUALIFIED PRODUCTS LIST MAY BE INSTALLED. MANUFACTURER'S SHOP DRAWINGS SHALL BE REQUIRED BEFORE ANY TANGENTIAL END TERMINAL INSTALLATIONS CAN BEGIN. THE CONTRACTOR SHALL HAVE ONE COMPLETE SET OF SHOP DRAWINGS ON SITE DURING INSTALLATION OR REPAIR OF ANY TANGENTIAL GUARDRAIL TERMINAL ANCHOR. THE CONTRACTOR SHALL ALSO PROVIDE THE CONSTRUCTION OR MAINTENANCE SUPERVISOR WITH ONE COMPLETE SET OF SHOP DRAWINGS.

MINOR REVISION -- FHWA APPROVAL NOT REQUIRED.

STATE OF TENNESSEE  
 DEPARTMENT OF TRANSPORTATION

**SLOTTED  
 GUARDRAIL TERMINAL  
 ANCHOR (TYPE 21)**

7-29-95      S-GR-26



5/8" X 1 1/4" BUTTON HEAD BOLTS, NUTS, AND WASHERS TO BE INSTALLED THRU ENLARGED AREA OF SLOT

5/8" X 10" BUTTON HEAD BOLTS, NUTS, AND WASHERS (NEED 1 ROUND AND 1 SQUARE WASHER)

5/8" X 18" BUTTON HEAD BOLTS, NUTS, AND WASHERS THROUGH 3/4" DIAMETER HOLE (SEE S-GR-12) ATTACH RAIL TO POST NOS. 3 & 4

8" X 6" X 6'-0" WOOD POST

8" X 6" X 3'-6 1/2" WOOD POST

8" X 6" X 3'-6 1/2" WOOD POST

SECTION "B-B"  
 (TYPICAL AT POST NOS. 3 & 4)

SECTION "A-A"  
 (TYPICAL AT POST NO. 2)

ENLARGED VIEW AT POST NO. 1