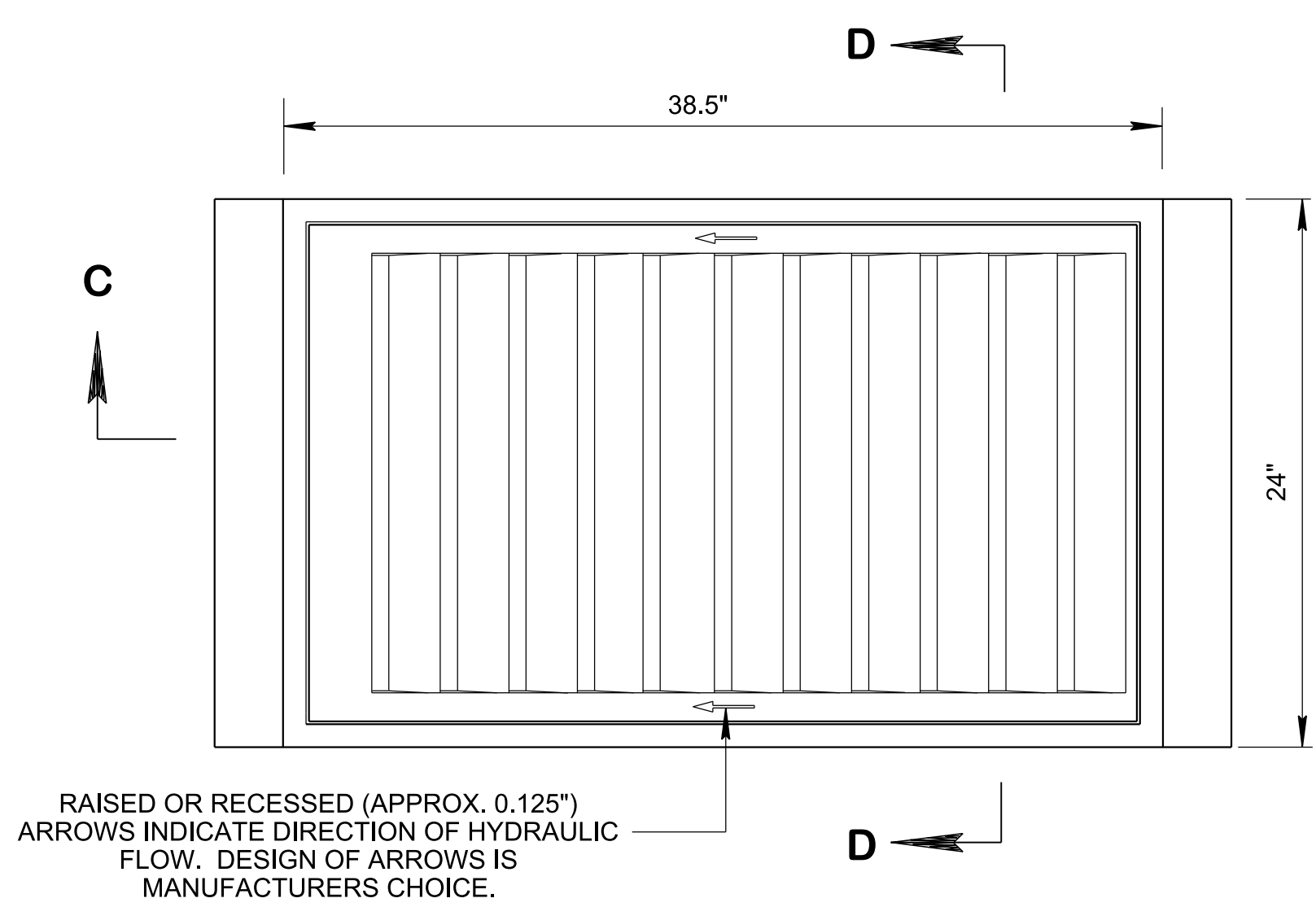
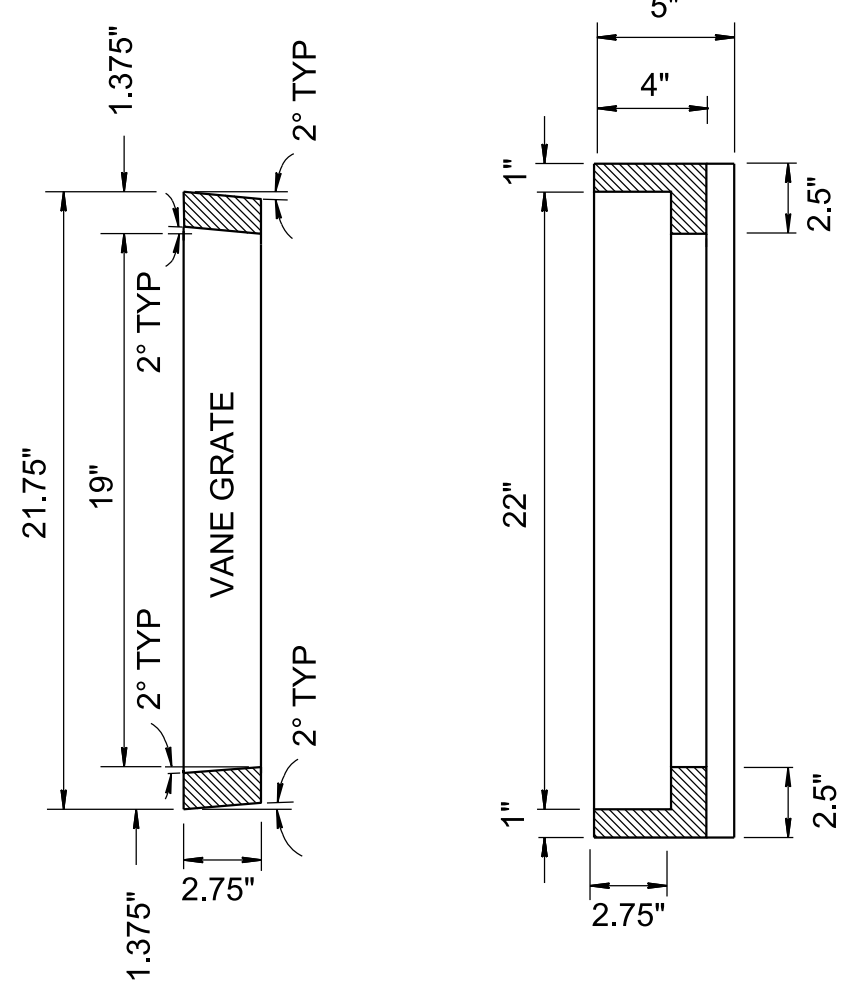


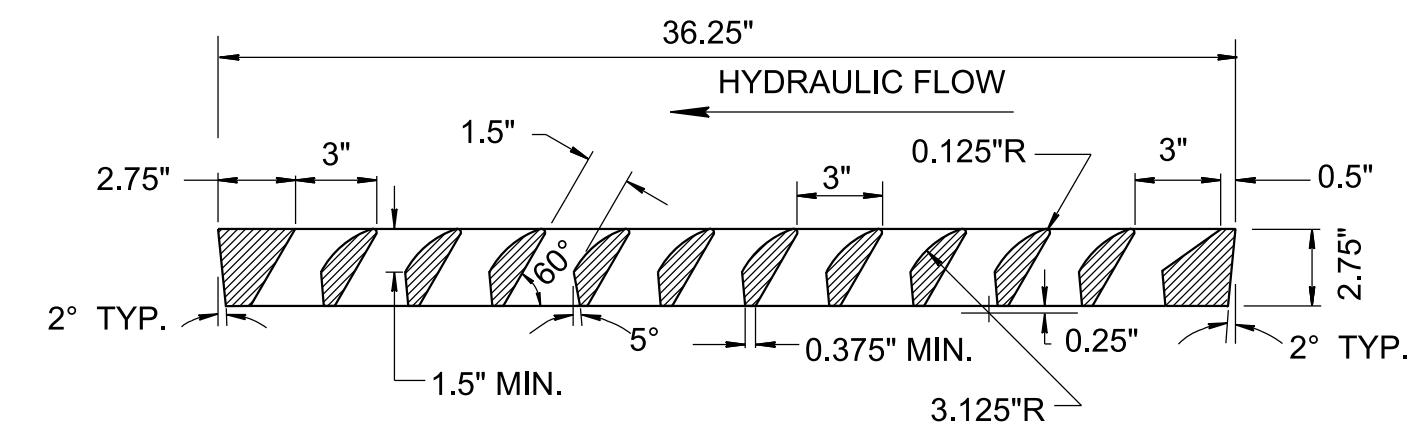
2/24/2020 8:46:50 AM P:\StandDraw\DESIGN STANDARDS\Standards Drawings Library\Standard Roadway Drawings - CURRENT\10-102.00 Catch Basins and Manholes --102.01 Catch Basins and Manholes --102.01 Catch Basins and Manholes.dgn



PLAN VIEW



SECTION D-D



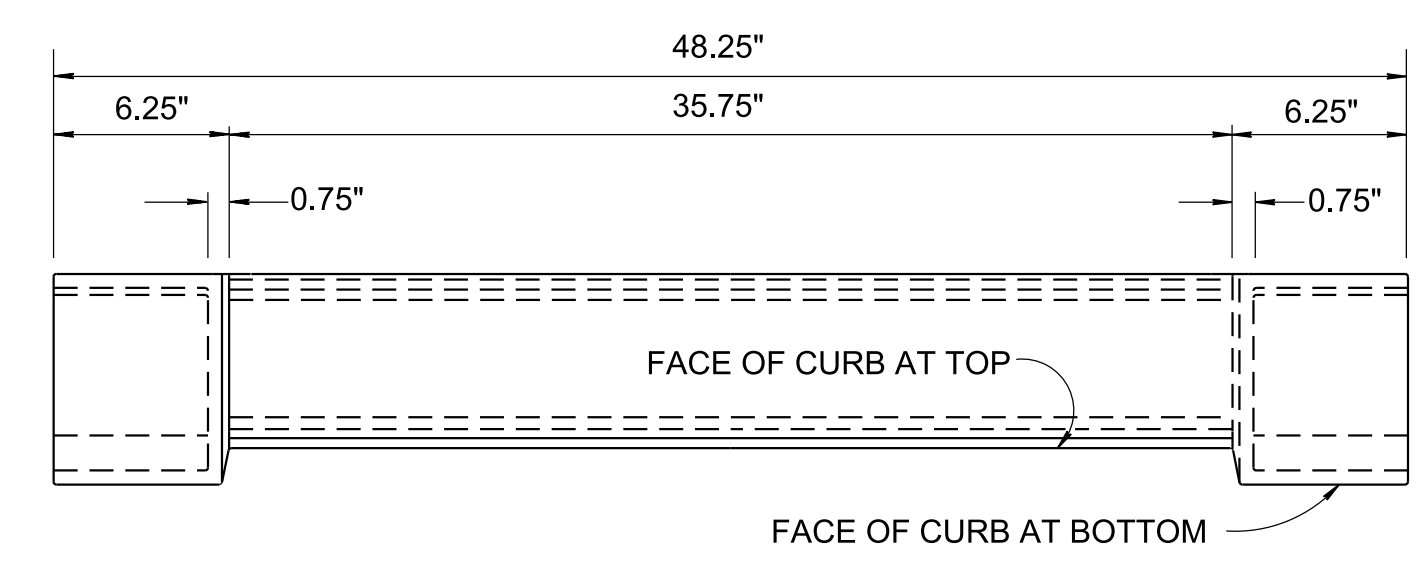
SECTION C-C

GRATE AND FRAME DETAILS

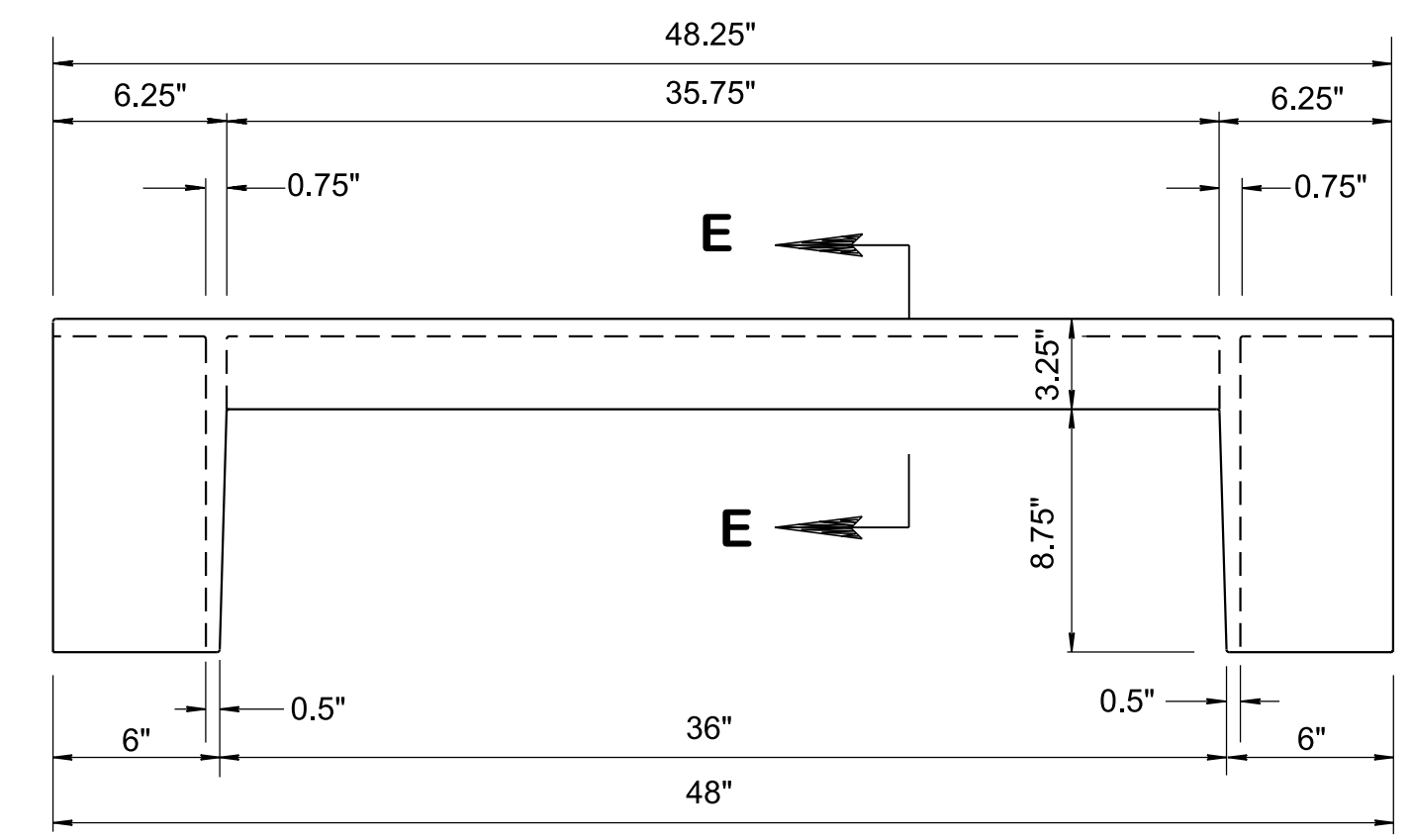
WEIGHTS FOR SINGLE GRATE CATCH BASIN	
FRAME -----	265 LBS.
GRATE -----	250 LBS.
CURB INLET -----	155 LBS.
<hr/>	
TOTAL -----	670 LBS. *

NOTE:
* FOR NO. 10 CATCH BASIN, DEDUCT 155 LBS. PER " GRATE ", SINCE NO CURB INLET IS REQUIRED.

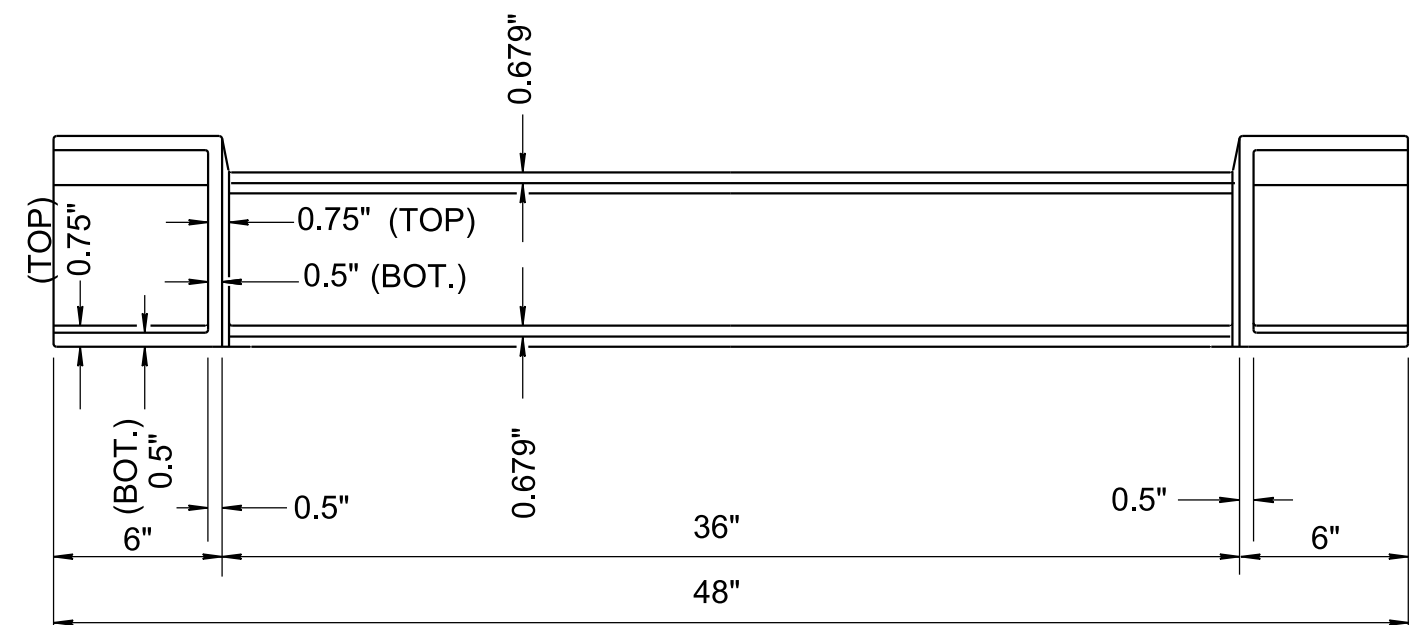
FRACTION TABLE	
1/8"	- 0.125"
1/4"	- 0.250"
3/8"	- 0.375"
1/2"	- 0.500"
5/8"	- 0.625"
1 1/16"	- 0.688"
3/4"	- 0.750"



TOP

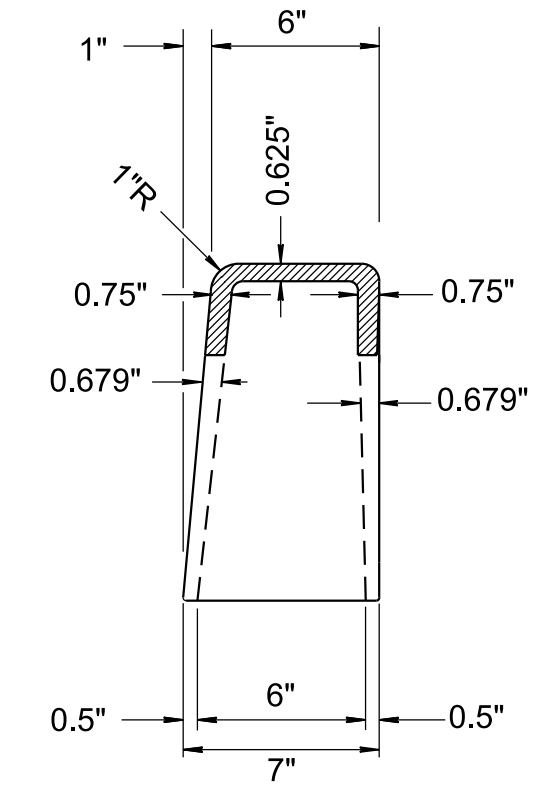


FRONT



BOTTOM

CURB INLET CASTING



SECTION E-E

GENERAL NOTES	
(A)	WHEN A SIX (6) INCH VERTICAL CURB IS REQUIRED USE THIS DRAWING ON ALL VARIATIONS OF NUMBER 10, 12, 14, 16, AND 17 CATCH BASINS CONTAINED IN THIS SECTION OF THE STANDARD DRAWINGS.
(B)	FOR CLEARNESS, ALL CORNERS ARE SHOWN ON THIS DRAWING BY STRAIGHT LINES WITH THE EXCEPTION OF THE 1" RADIUS AT THE TOP OF FACE OF CURB. ALL INSIDE CORNERS SHOULD BE MADE WITH 1/2" x 1/2" FILLETS OR 3/4" RADIUS FILLETS FOR EASE IN MOLDING.
(C)	IF PAID FOR SEPARATELY CAST IRON USED IN CASTINGS IS TO BE PAID FOR UNDER ITEM NO. 611-03.04, GRAY IRON CASTINGS (CATCH BASIN), LB.
(D)	IF CATCH BASIN IS PAID FOR UNDER EACH, THEN COST OF CAST IRON USED IN CASTINGS IS TO BE PAID FOR UNDER THE SPECIFIC ITEM BID FOR THAT CATCH BASIN. SEE STANDARD DRAWINGS FOR TYPE 10, 12, 14, 16, AND 17 CATCH BASINS FOR APPLICABLE PAY ITEMS FOR EACH TYPE OF CATCH BASIN.

- REV. 10-26-93: REDREW SHEET, REORGANIZED SHEET AND UPDATED TO 1993 POLICY.
- REV. 9-05-94: MODIFIED CURB INLET CASTING DETAIL.
- REV. 1-19-95: CHANGED WEIGHT OF CURB INLET CASING FROM 150 TO 155 POUNDS.
- REV. 5-27-95: CHANGED GENERAL NOTE (A).
- REV. 5-27-97: CHANGED GENERAL NOTE (A) . DELETED OLD GENERAL NOTE (C) . CHANGED DESCRIPTION IN RIGHT LOWER CORNER BLOCK.
- REV. 1-19-98: CHANGED GENERAL NOTE (A).
- REV. 12-18-99: CHANGED LOWER RIGHT HAND CORNER BLOCK DESCRIPTION.
- REV. 5-27-01: CHANGED GENERAL NOTE (D).
- REV. 06-28-19: REVISED DRAWING NAME AND GENERAL NOTE (A) BY CHANGING NONMOUNTABLE TO VERTICAL. REDREW SHEET.

MINOR REVISION -- FHWA APPROVAL NOT REQUIRED

STATE OF TENNESSEE
STANDARD DRAWING
DEPARTMENT OF TRANSPORTATION

TYPE 'B' CAST IRON FRAME, GRATE & VERTICAL INLET DETAILS FOR NOS. 10, 12, 14, 16 & 17 TYPE CATCH BASINS

01-20-1984 D-CBB-12A