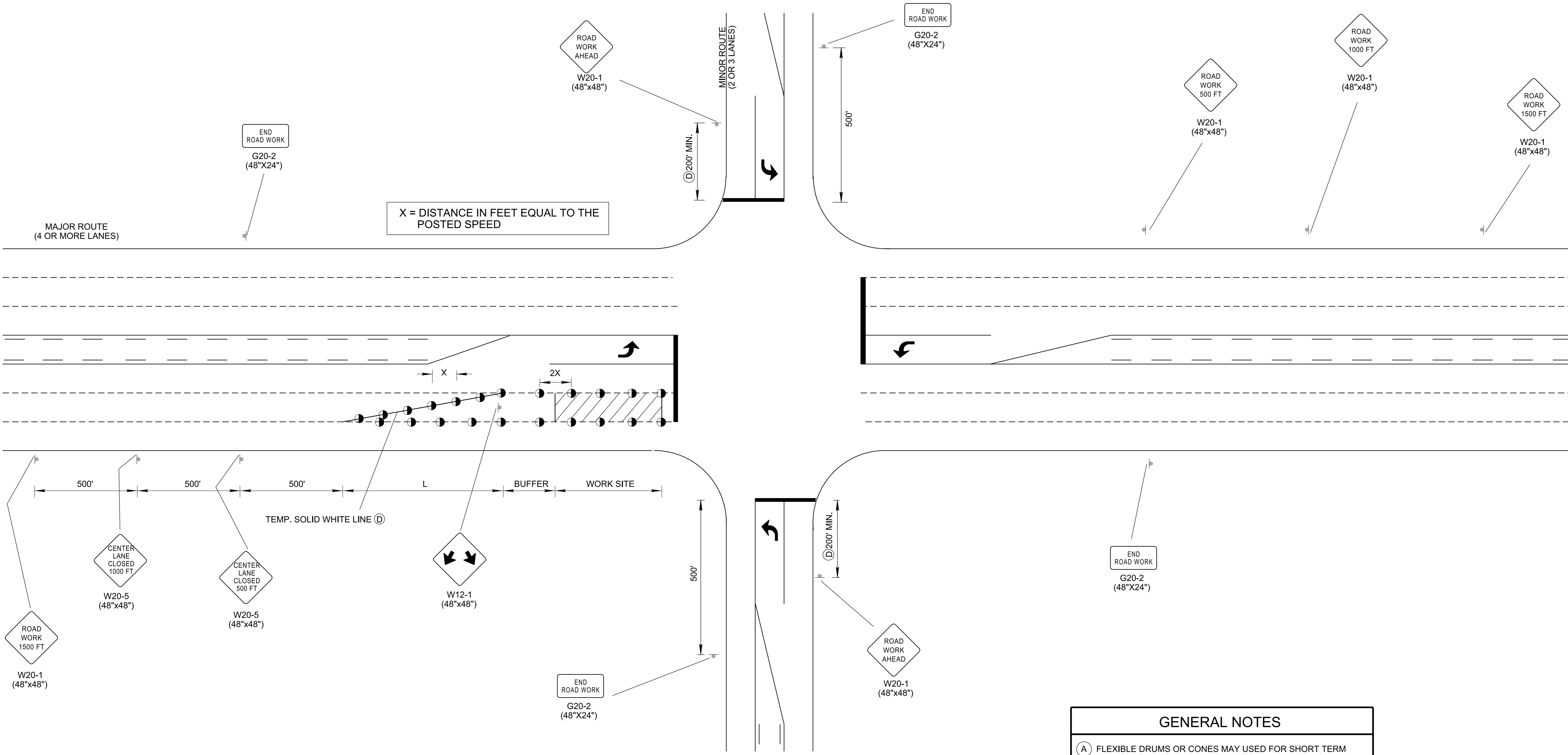
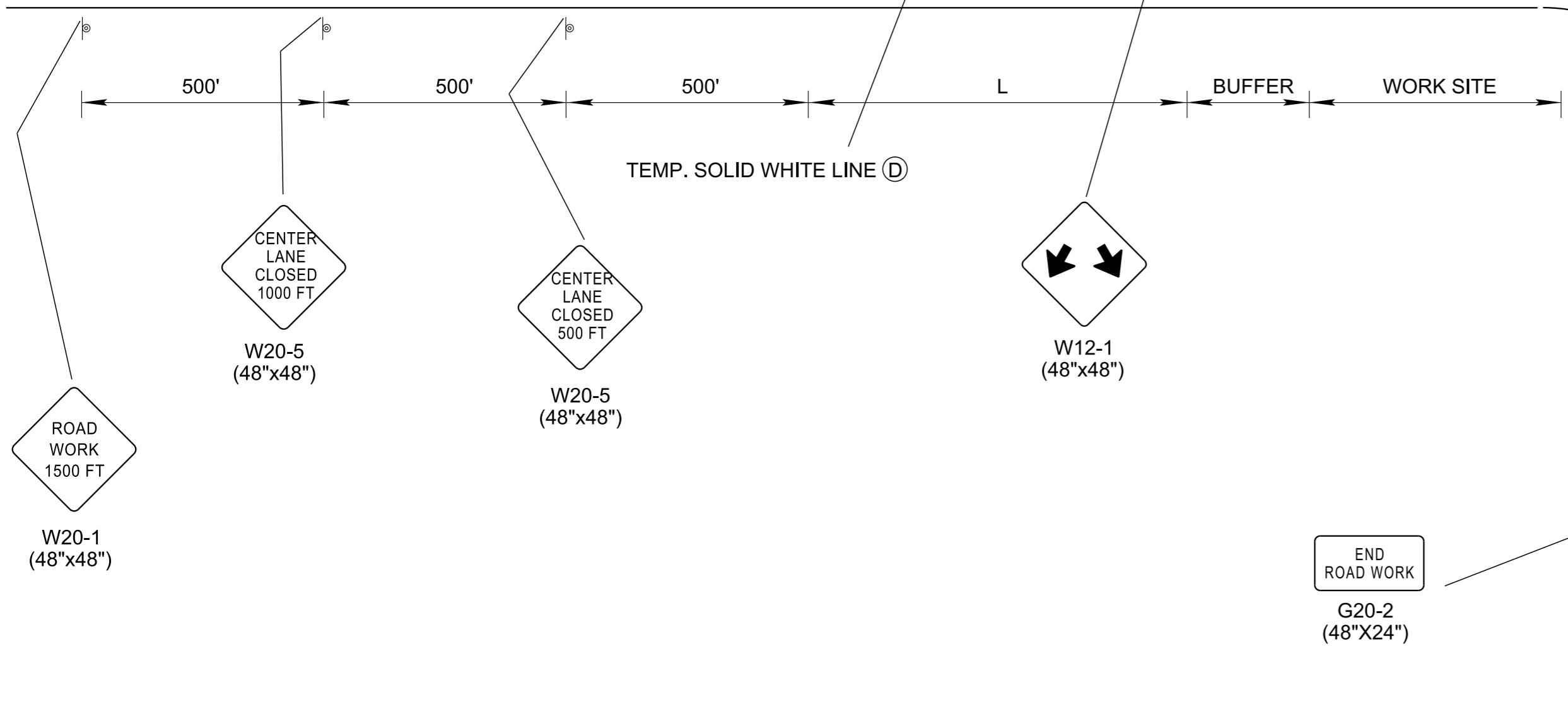


# CENTER LANE CLOSURES AT NEAR SIDE OF INTERSECTIONS

- REV. 9-1-05: REMOVED TYPE "C" WARNING LIGHTS FROM FLEXIBLE DRUMS IN TAPER. REMOVED TYPE "C" WARNING LIGHT NOTE FROM GENERAL NOTES.
- REV. 4-2-12: MOVED SIGN W21-1. CHANGED SIGN G20-2A TO G20-2.
- REV. 03-05-17: ADDED GENERAL NOTE (D)
- REV. 4-15-99: ADDED GENERAL NOTE (E)
- REV. 12-18-99: MODIFIED HEADING DESCRIPTION AND ELIMINATED OLD GENERAL NOTE (A)
- REV. 4-15-04: CHANGED W4-2 SIGN. CHANGED GENERAL NOTES (B) AND (C) TO COMPLY WITH 2003 MUTCD.



X = DISTANCE IN FEET EQUAL TO THE POSTED SPEED



CHANNELIZATION DEVICE LEGEND	
	FLEXIBLE DRUMS
	SIGN SUPPORT
	WORK SITE

COMPUTATION FOR DISTANCE L	
$L = W \times S$	(FOR POSTED SPEEDS OF 45 MPH OR GREATER)
$L = \frac{W \times S^2}{60}$	(FOR POSTED SPEEDS OF 40 MPH OR LESS)
L = TAPER LENGTH IN FEET W = WIDTH OF OFFSET IN FEET S = POSTED SPEED	

- | GENERAL NOTES |  |
|---------------|--|
| (A)           | FLEXIBLE DRUMS OR CONES MAY BE USED FOR SHORT TERM LANE CLOSURES (DAY TIME ONLY). FLEXIBLE DRUMS SHALL BE USED FOR LONG TERM (OVERNIGHT) CLOSURES.   |
| (B)           | SEE TABLE 6C-2 OF PART VI OF THE MANUAL ON UNIFORM TRAFFIC CONTROL DEVICES (MUTCD) FOR RECOMMENDED LENGTHS OF BUFFER SPACE WHICH ARE BASED ON STOPPING SIGHT DISTANCE AS A FUNCTION OF SPEED.                                      |
| (C)           | SEE TABLE 6C-1 OF PART VI OF THE MANUAL ON UNIFORM TRAFFIC CONTROL DEVICES (MUTCD) FOR GUIDELINES FOR ADVANCE WARNING SIGN SPACING TO BE USED TO DETERMINE DISTANCE FOR "ROAD WORK AHEAD" SIGN TO BE PLACED PRIOR TO INTERSECTION. |
| (D)           | SEE TDOT ROADWAY DESIGN GUIDELINES SECTION 4-716.11 FOR LINE WIDTH AND SECTION 4-716.30 FOR MATERIAL TYPE.   |

MINOR REVISION -- FHWA APPROVAL NOT REQUIRED.

STATE OF TENNESSEE  
DEPARTMENT OF  
TRANSPORTATION  
**CENTER LANE  
CLOSURES  
AT NEAR SIDE  
OF INTERSECTIONS**

28-APR-2017 14:02 \\AG03SDCWF00008.net.ads.state.in.us\13\SHARED\StandDraw\DESIGN STANDARDS\StandDraw\Traffic Control\Work Zones\Current\TWZ42-20170305.DGN