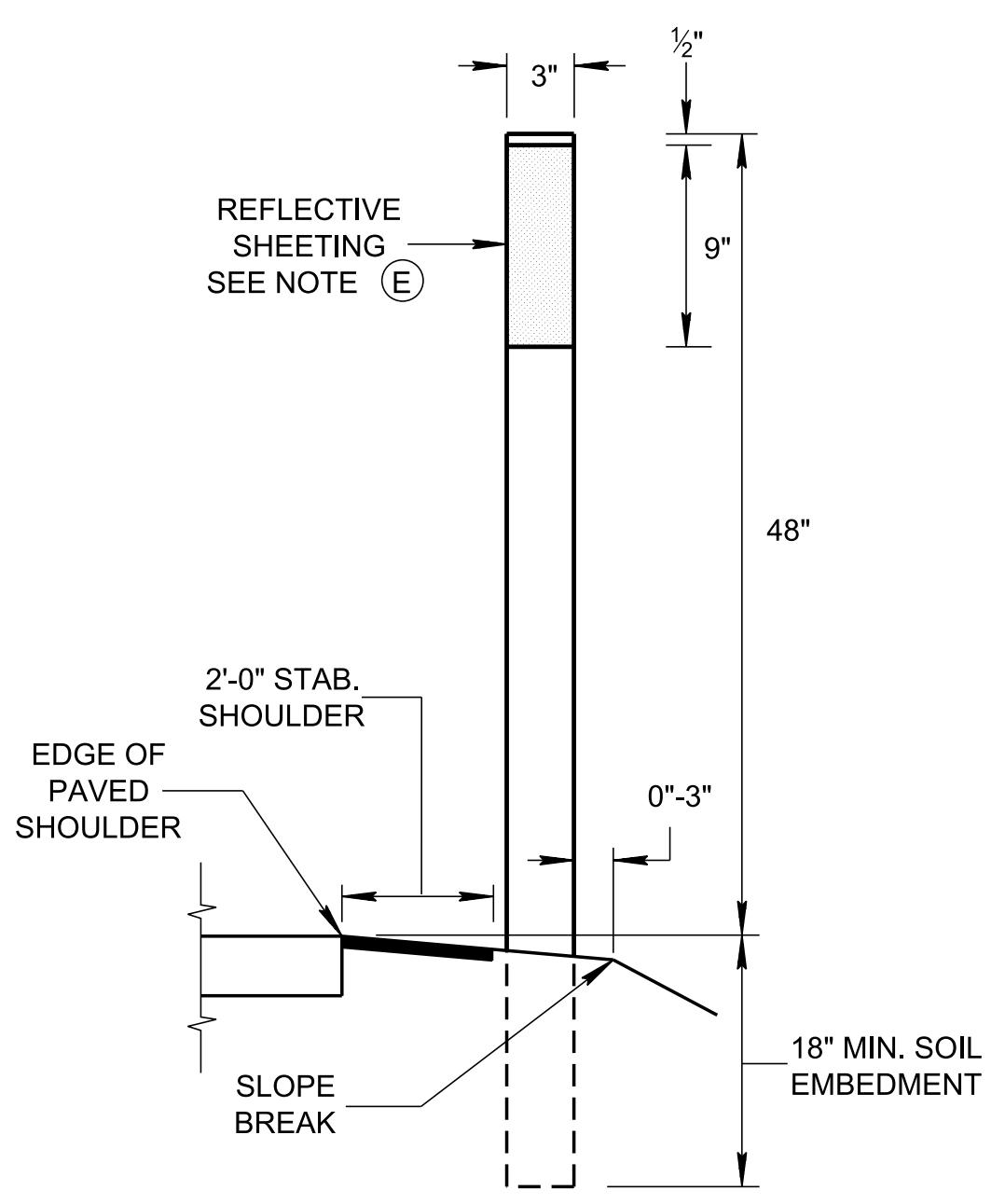
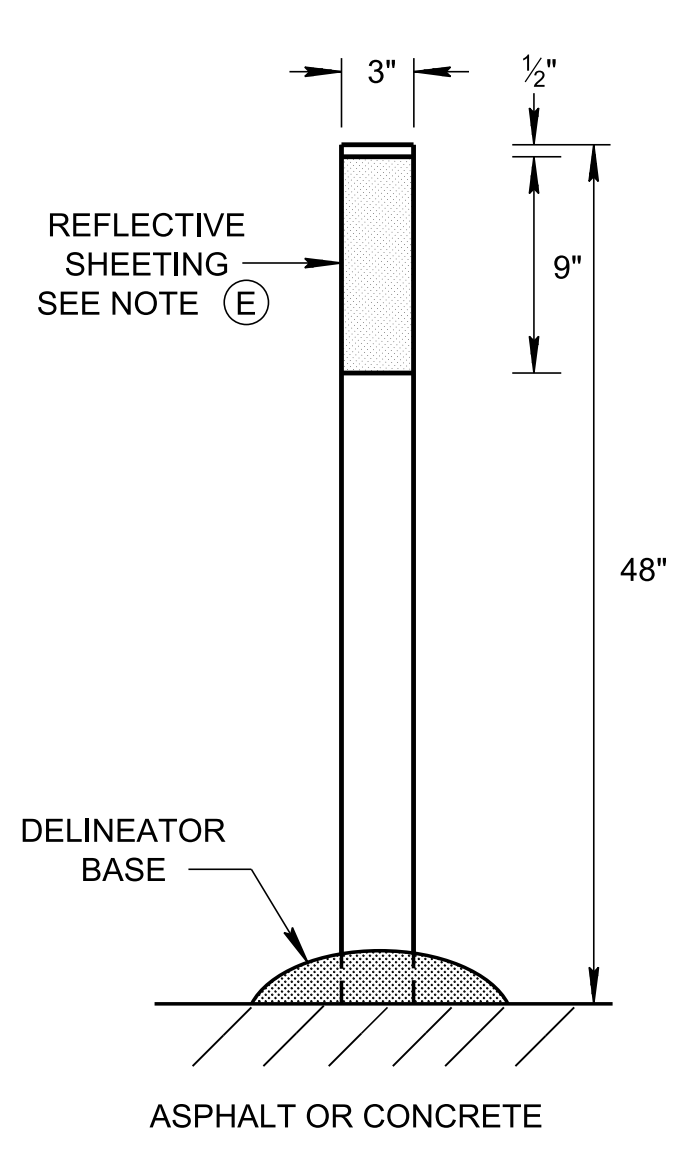


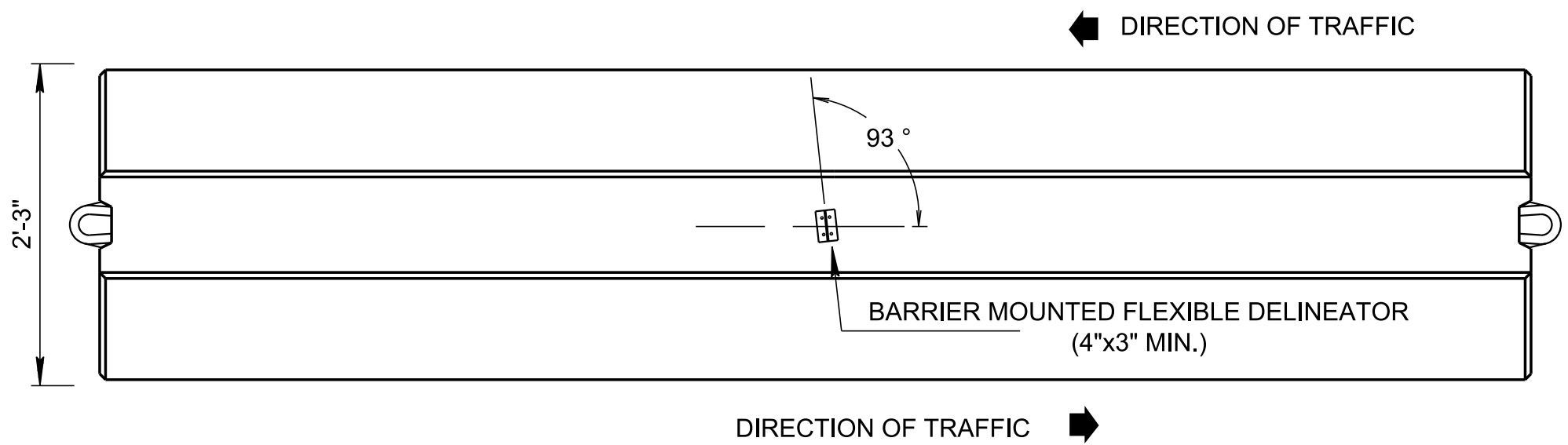
4/8/2020 1:06:18 PM P:\StandDraw\DESIGN STANDARDS\Standards Drawings Library\Standard Roadway Drawings - CURRENT\In Progress\10-107.00 Design - Traffic Control IP\170.02 Work Zone IP Larry Parker\TWZPBR2-20200222



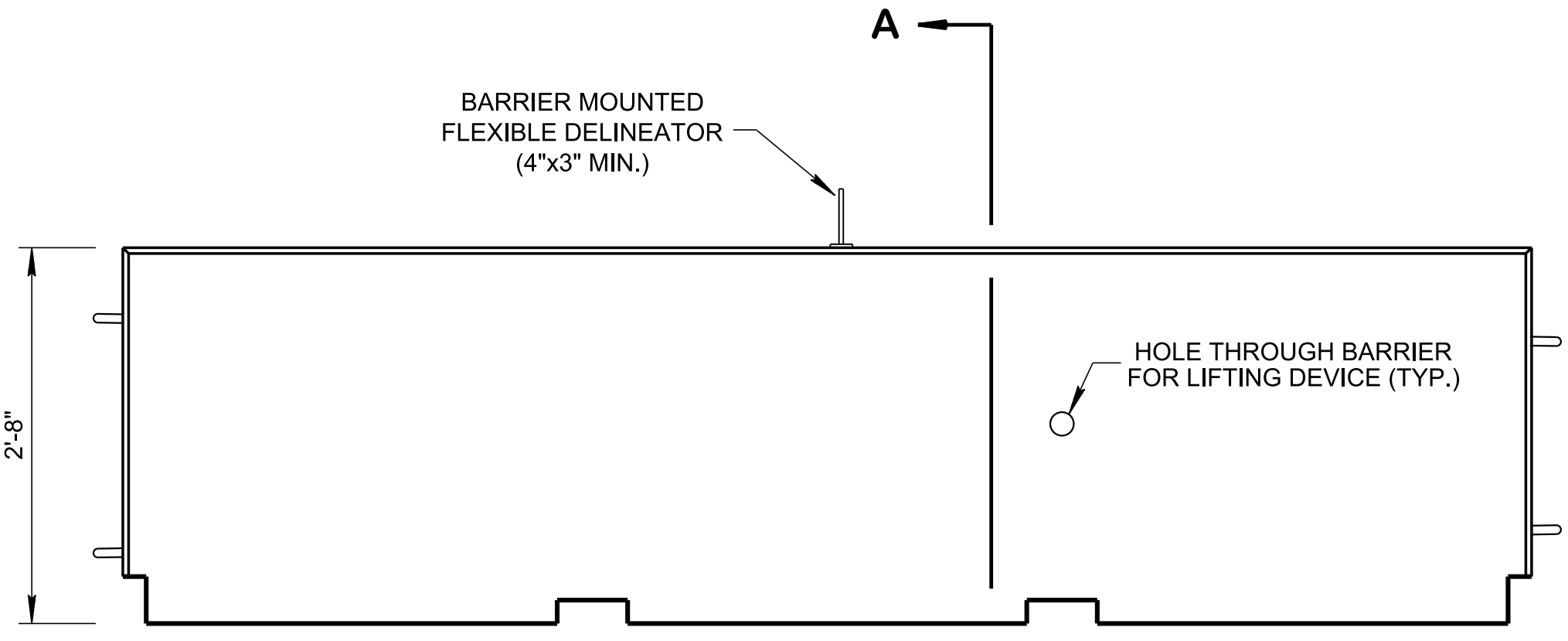
GROUND MOUNTED FLEXIBLE DELINEATOR
SEE CATEGORY I WORK ZONE DEVICES



SURFACE MOUNTED FLEXIBLE DELINEATOR
SEE CATEGORY I WORK ZONE DEVICES
SEE NOTE (I)



PLAN VIEW

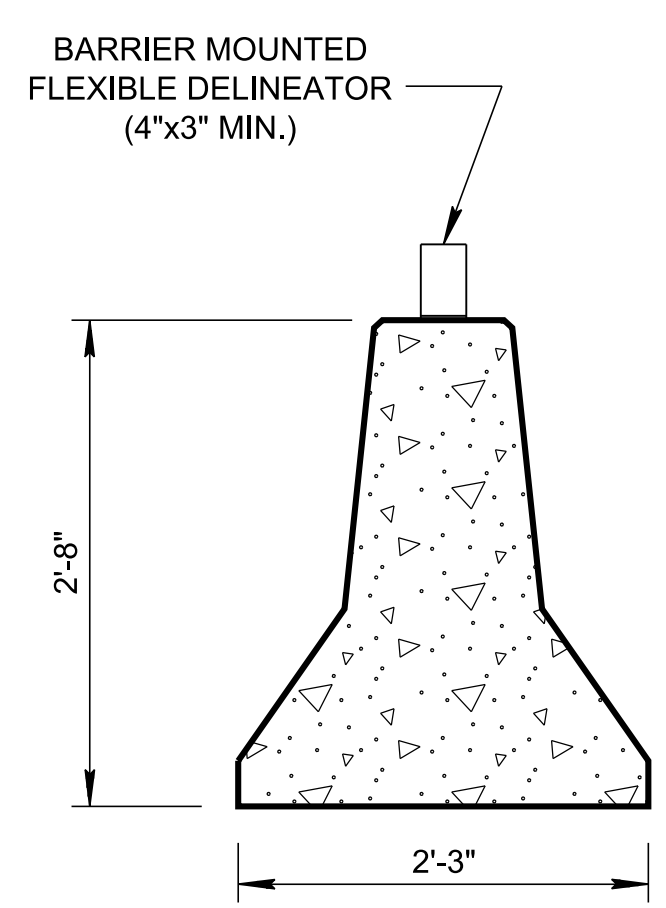


ELEVATION VIEW

DELINEATOR MOUNTED ON INTERCONNECTED TEMPORARY PORTABLE CONCRETE BARRIER RAIL

(SEE T-WZ-PBR1 FOR DETAILS REGARDING INTERCONNECTED PORTABLE BARRIER RAIL)

SEE CATEGORY III WORK ZONE DEVICES



SECTION A-A

GENERAL NOTES

FLEXIBLE DELINEATORS

- (A) THE REFLECTIVE SHEETING SHALL MEET THE REQUIREMENTS OF AASHTO M268, TYPE III OR HIGHER RETROREFLECTION PERFORMANCE LEVEL.
- (B) THE REFLECTIVE SHEETING STRIP ON THE DELINEATORS SHALL BE MIN. 9 INCHES IN LENGTH AND SUFFICIENT WIDTH TO PROVIDE A MIN. 3 INCHES WIDE PROFILE FACING APPROACHING TRAFFIC. THE VARIATIONS IN REFLECTIVE SHEETING DIMENSION SHOULD NOT EXCEED ± 10%.
- (C) THE CONTRACTOR SHALL SELECT MATERIAL FROM THE DEPARTMENT'S QPL.
- (D) THE COLOR OF THE DELINEATOR POST SHALL BE WHITE UNLESS OTHERWISE NOTED ON THE PLANS.
- (E) THE COLOR OF THE REFLECTIVE SHEETING SHALL CONFORM TO THE COLOR OF EDGE LINES STIPULATED IN SUBSECTION 3B-6 (PAGE 3B-8 AND 3B-11) OF THE CURRENT EDITION OF THE MANUAL ON UNIFORM TRAFFIC CONTROL DEVICES.
- (F) PAYMENT FOR GROUND MOUNTED FLEXIBLE DELINEATORS WILL BE MADE AS FOLLOWS ITEM NO'S.:

713-02.14, FLEXIBLE DELINEATOR (WHITE),	EACH.
713-02.15, FLEXIBLE DELINEATOR (YELLOW),	EACH.
713-02.16, FLEXIBLE TYPE II, OBJECT MARKER,	EACH.
713-02.33, FLEXIBLE DELINEATOR (RED),	EACH.
- (G) PAYMENT FOR SURFACE MOUNTED FLEXIBLE DELINEATORS WILL BE MADE AS FOLLOWS ITEM NO.:

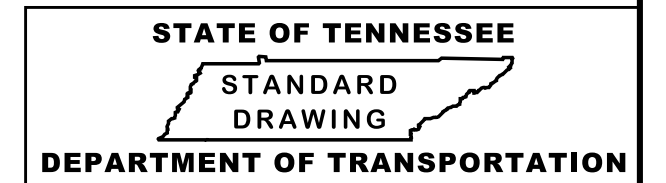
713-02.30, FLEXIBLE TUBULAR DELINEATOR,	EACH.
---	-------
- (H) SPACING FOR SURFACE MOUNTED FLEXIBLE DELINEATOR POSTS SHALL BE 20' OR LESS.
- (I) SURFACE MOUNTED FLEXIBLE DELINEATORS SHALL BE INSTALLED PER MANUFACTURER'S INSTRUCTIONS.
- (J) ONLY PRODUCTS LISTED ON THE DEPARTMENT'S QPL SHALL BE USED.

BARRIER MOUNTED FLEXIBLE DELINEATOR

- (K) SPACING FOR DELINEATORS NOT IN A TAPER SHOULD BE A DISTANCE IN FEET APPROXIMATELY EQUAL TO TWO TIMES THE POSTED SPEED LIMIT IN MILES PER HOUR. THE MAXIMUM SPACING IN FEET BETWEEN DELINEATORS IN A TAPER SHOULD BE APPROXIMATELY EQUAL TO THE POSTED SPEED IN MILES PER HOUR, BUT WILL NOT EXCEED ONE HALF THE SPACING OF THE DELINEATORS NOT IN A TAPER.
- (L) IF USED FOR TRAFFIC IN TWO DIRECTIONS, TWO SIDED DELINEATORS SHALL BE USED.
- (M) THE BARRIER MOUNTED FLEXIBLE DELINEATORS FACE, SUPPORT, INSTALLATION AND HARDWARE ARE TO BE PAID FOR UNDER THE PRICE BID FOR ITEM NO.:

712-04.50, BARRIER RAIL DELINEATOR,	EACH
-------------------------------------	------
- (N) BARRIER MOUNTED FLEXIBLE DELINEATORS SHALL BE 3" WIDTH MINIMUM X 4" HEIGHT MINIMUM.
- (O) ONLY PRODUCTS LISTED ON THE DEPARTMENT'S QPL SHALL BE USED.
- (P) BARRIER MOUNTED FLEXIBLE DELINEATORS SHALL BE INSTALLED PER MANUFACTURER'S INSTRUCTIONS.

(Replaced Std Dwg T-PBR-2)



DETAILS FOR WORK ZONE CHANNELIZATION DEVICES