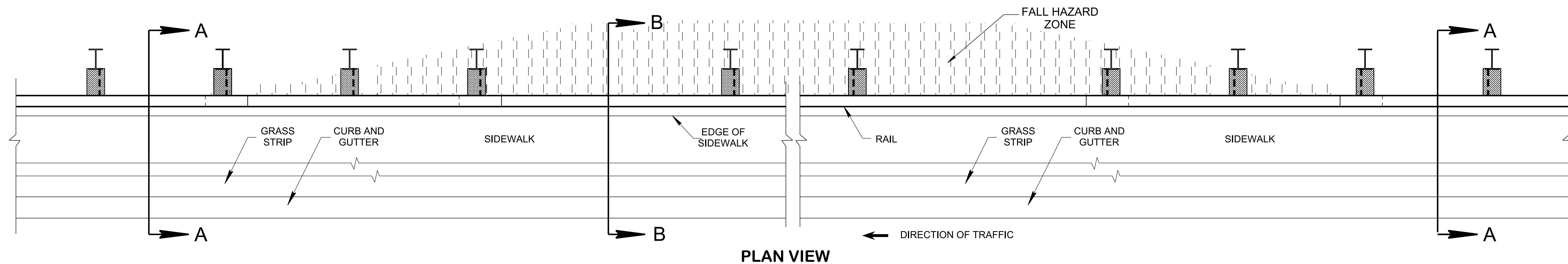
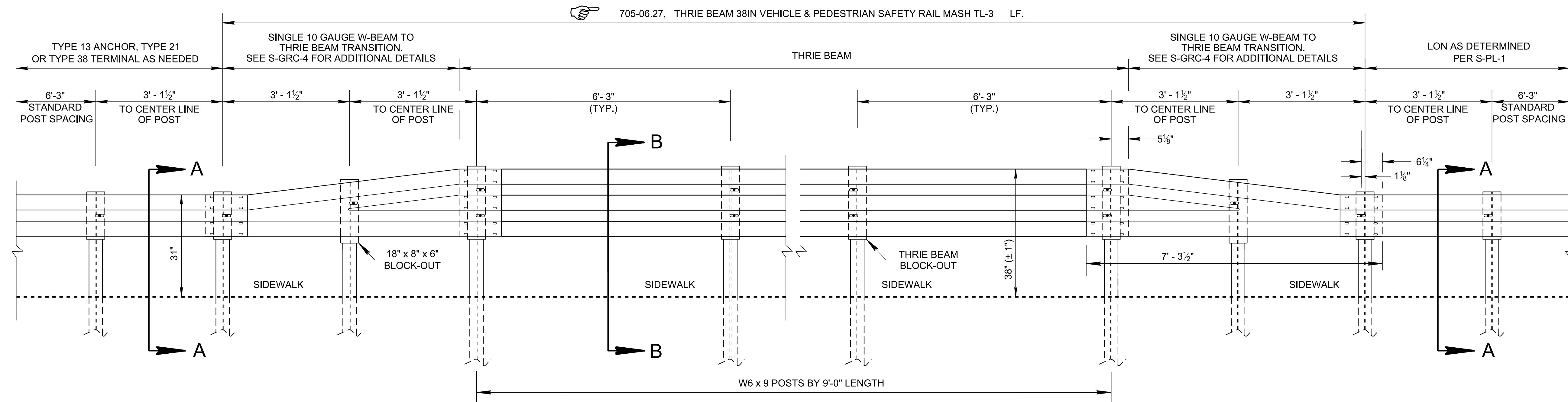


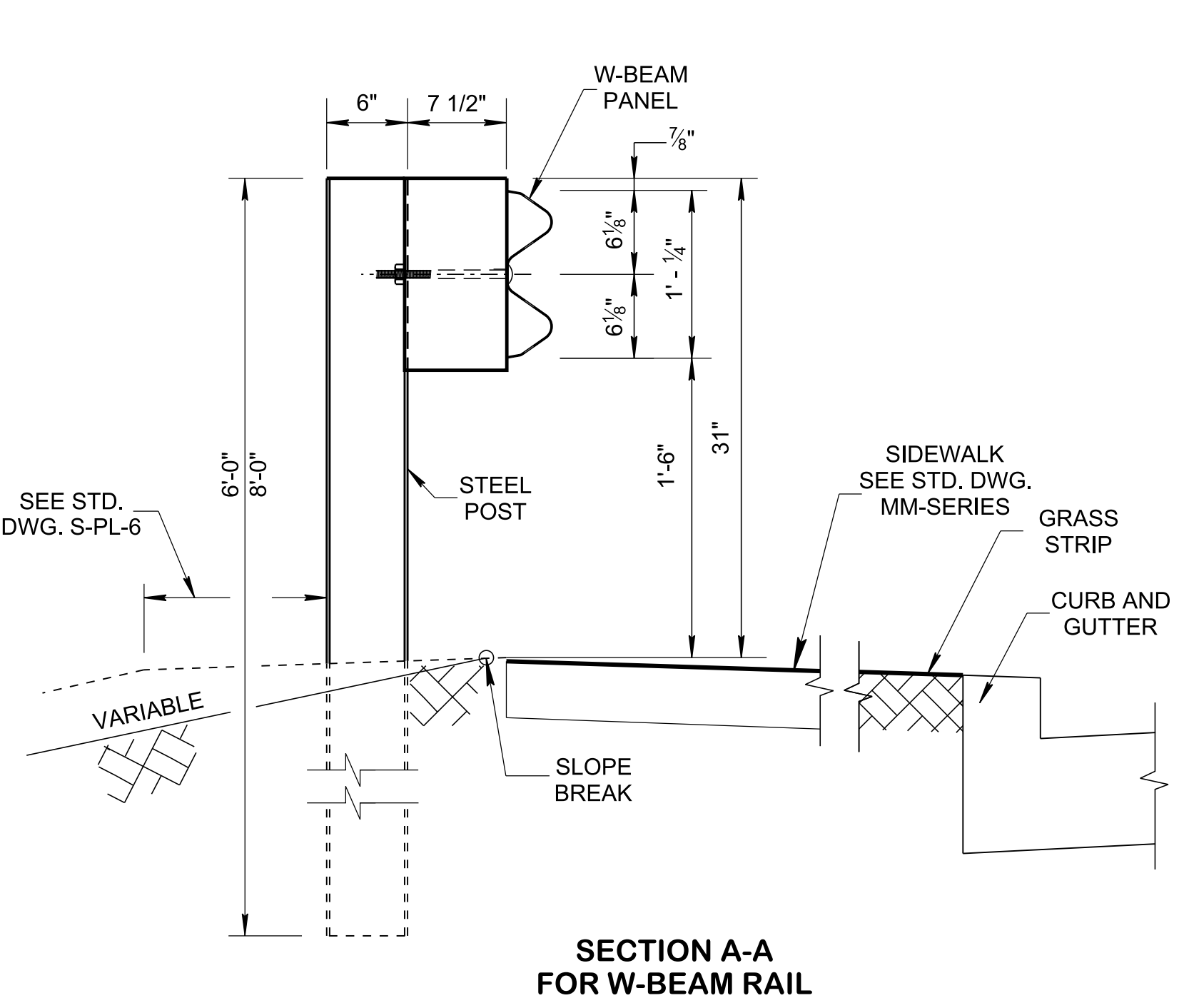
11/16/2020 8:26:19 AM P:\StandDraw\DESIGN STANDARDS\Standards Drawings\Standard Roadway Drawings - CURRENT\In Progress\10-105.00 Multimodal IP\160.03 Safety Rail IP\MMVPR1-20201016.dgn



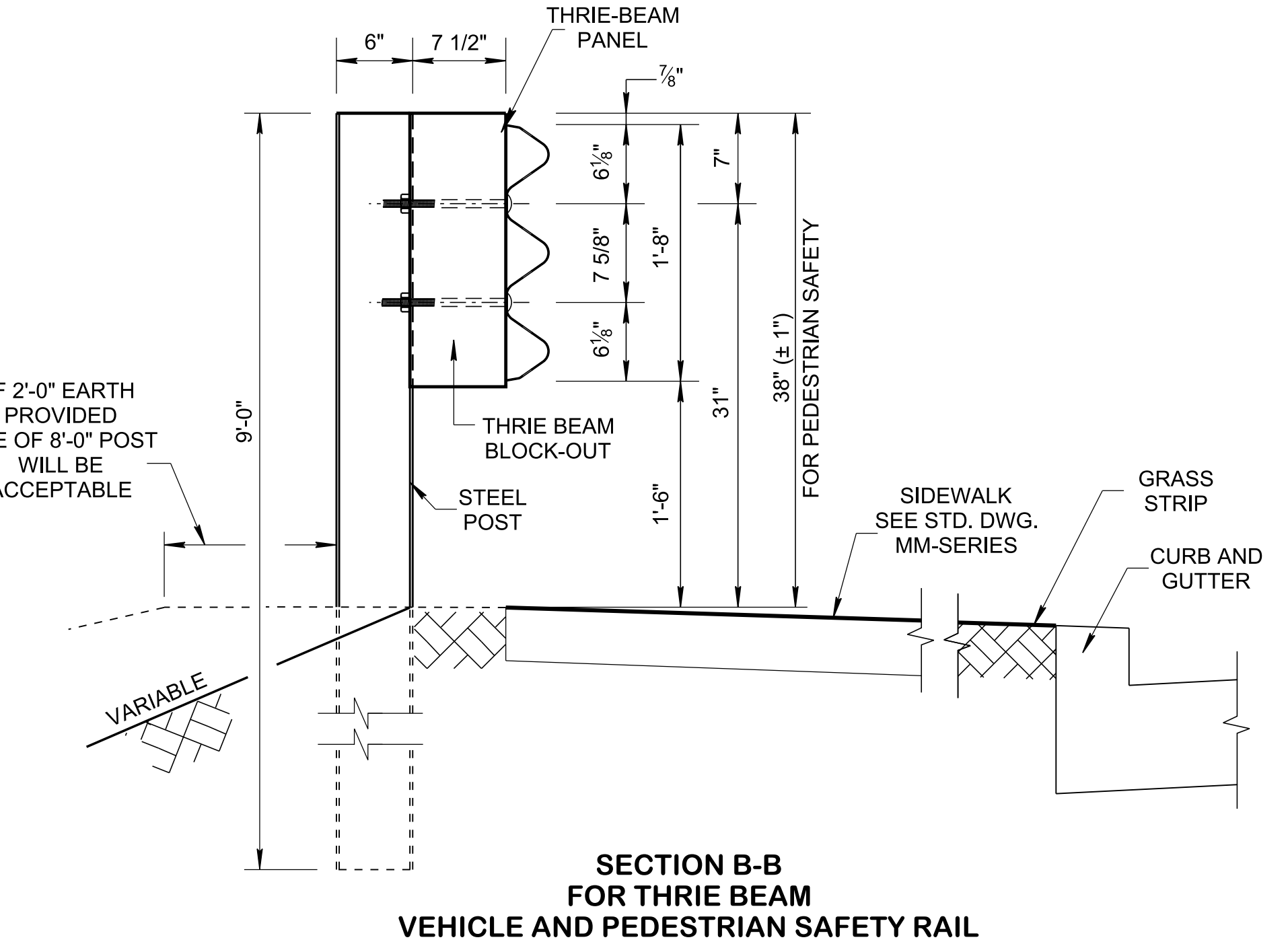
PLAN VIEW



ELEVATION VIEW



SECTION A-A FOR W-BEAM RAIL



SECTION B-B FOR THRIE BEAM VEHICLE AND PEDESTRIAN SAFETY RAIL

GENERAL NOTES

(A) THE 38" VEHICLE AND PEDESTRIAN SAFETY RAIL MAY BE USED AT LOCATIONS WHERE GUARDRAIL IS WARRANTED FOR VEHICLE SAFETY PER S-CZ-1 AND WHERE THE PEDESTRIAN SAFETY RAIL IS WARRANTED PER MM-BPR-1.

(B) THIS DETAIL SHOULD ONLY BE APPLIED FOR PEDESTRIAN FACILITIES. ON SHARED USE PATHS, IN ORDER TO PROVIDE BICYCLE SAFETY, A MINIMUM 42" RAIL HEIGHT SHOULD BE PROVIDED. REFER TO STANDARD DRAWING MM-BPR-2.

(C) SEE STANDARD DRAWINGS S-PL-6 AND S-GR31 SERIES FOR ALL OTHER GUARDRAIL DETAILS AND MATERIAL PROPERTIES NOT SHOWN IN THIS SHEET.

(D) REFER TO STANDARD DRAWING RD11-TS SERIES FOR ROADWAY SECTIONS AND MM-TS-2 FOR PEDESTRIAN FACILITIES.

(E) PAYMENT:
ALL COMPONENTS AS SHOWN ON THIS DRAWING OR ANY COMPONENTS NEEDED TO INSTALL THIS GUARDRAIL SHALL BE INCLUDED UNDER PAY ITEM NUMBER:
705-06.27, THRIE BEAM 38IN VEHICLE & PEDESTRIAN SAFETY RAIL MASH TL-3 LF.

STATE OF TENNESSEE
STANDARD DRAWING
DEPARTMENT OF TRANSPORTATION

VEHICLE AND PEDESTRIAN SAFETY RAIL

10-16-2020 MM-VPR-1

NOT TO SCALE