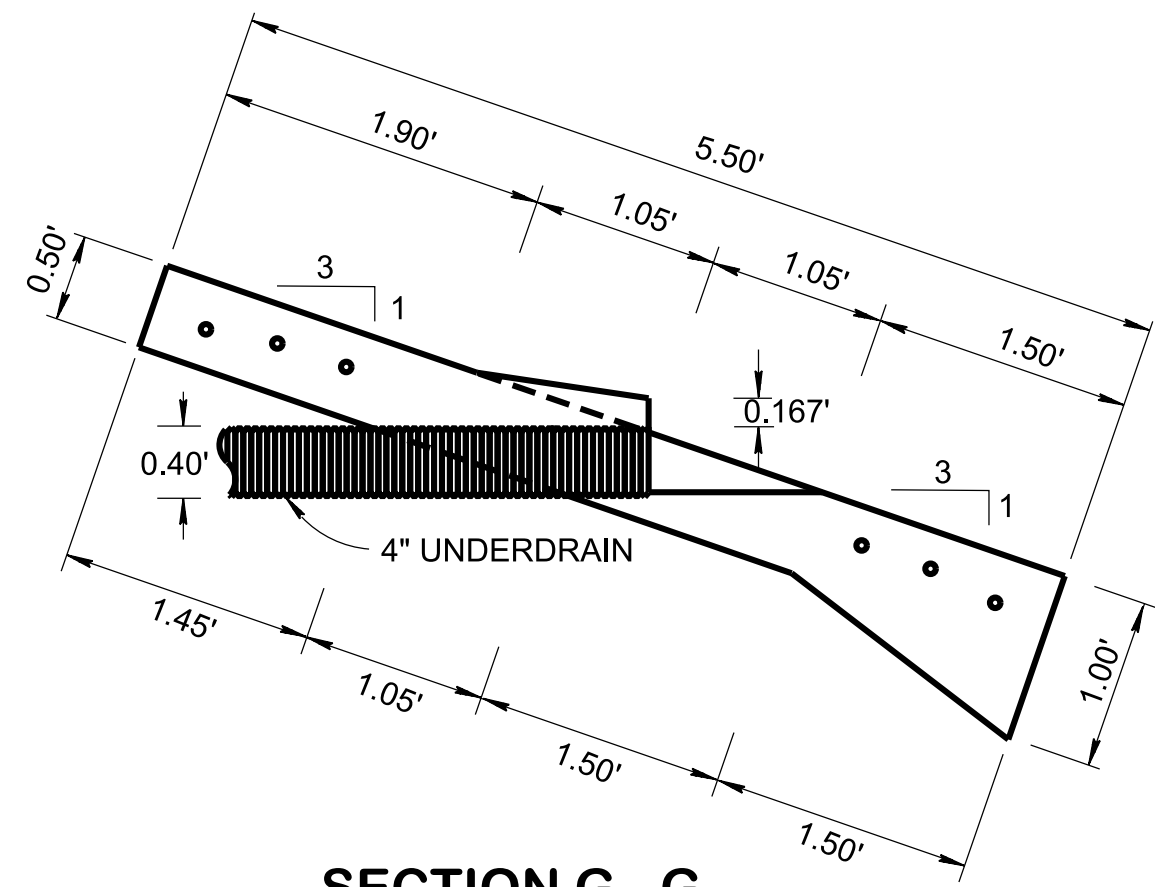


LATERAL UNDERDRAIN ENDWALL DETAIL FOR 3:1 SLOPES

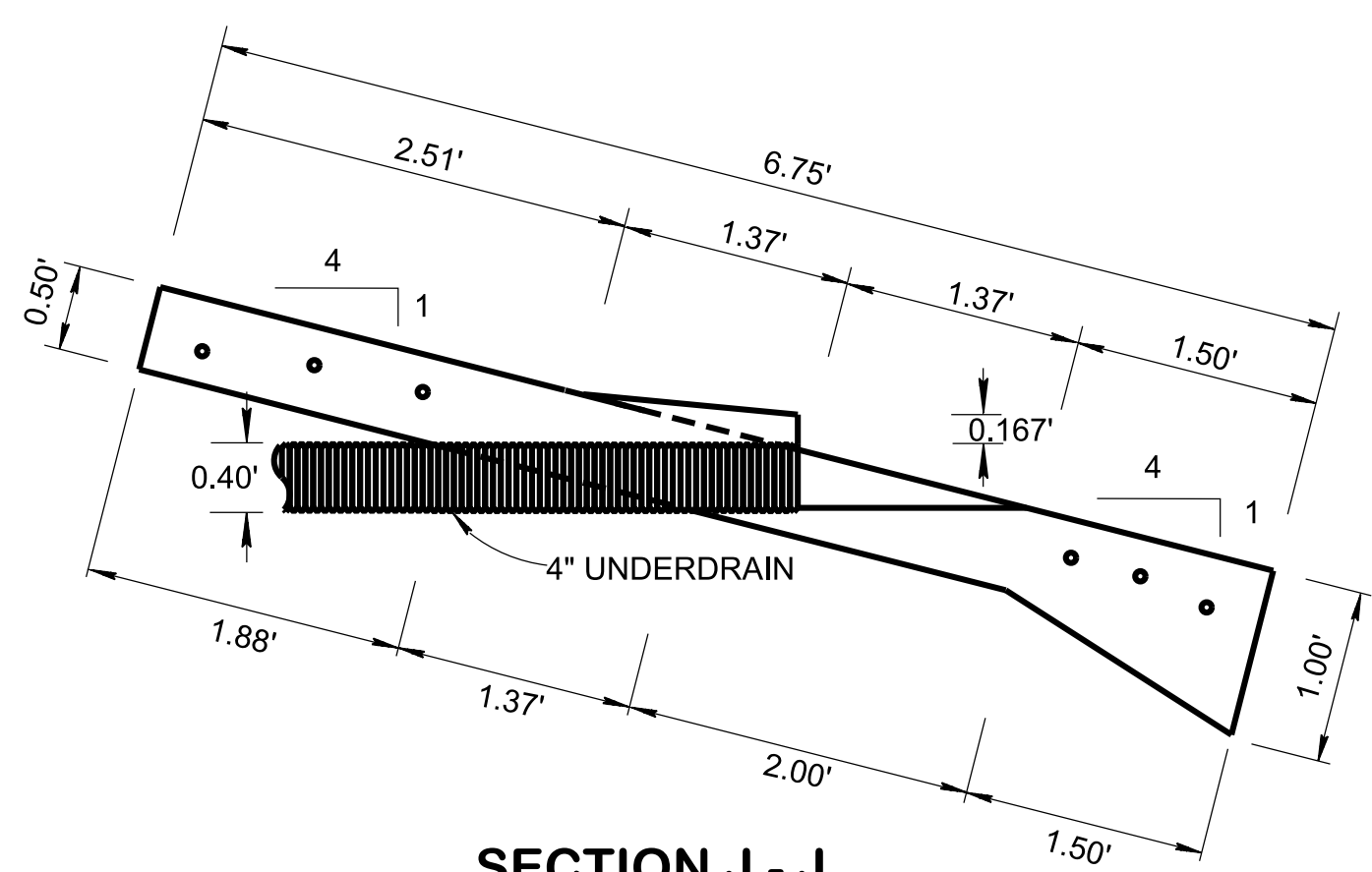
(ITEM NO. 710 - 06.12)



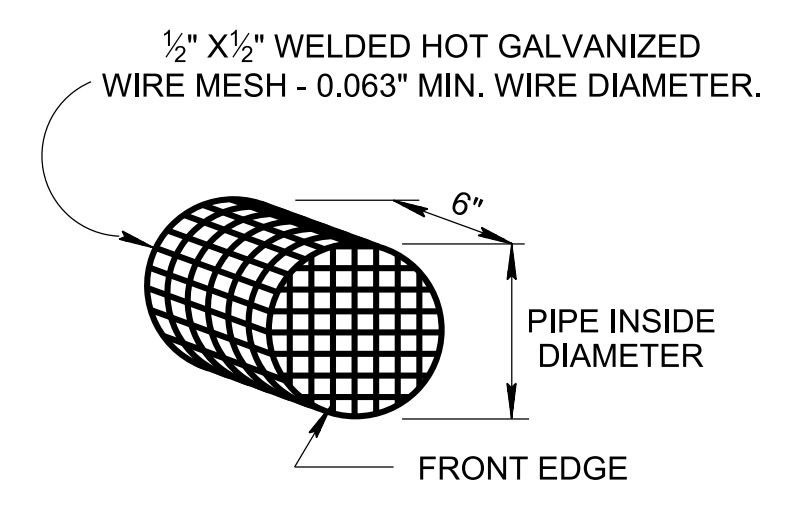
SECTION G - G

LATERAL UNDERDRAIN ENDWALL DETAIL FOR 4:1 SLOPES

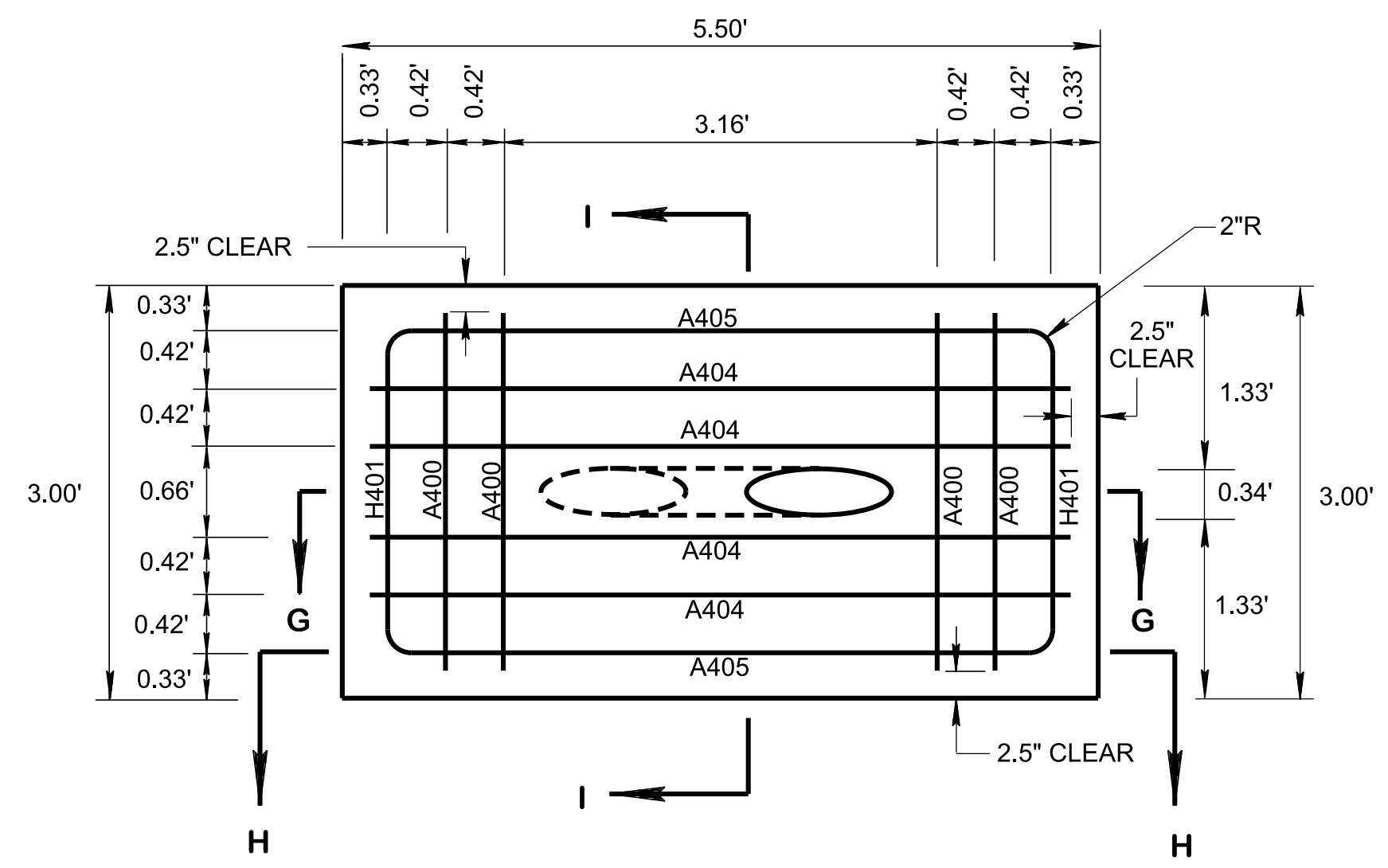
(ITEM NO. 710 - 06.13)



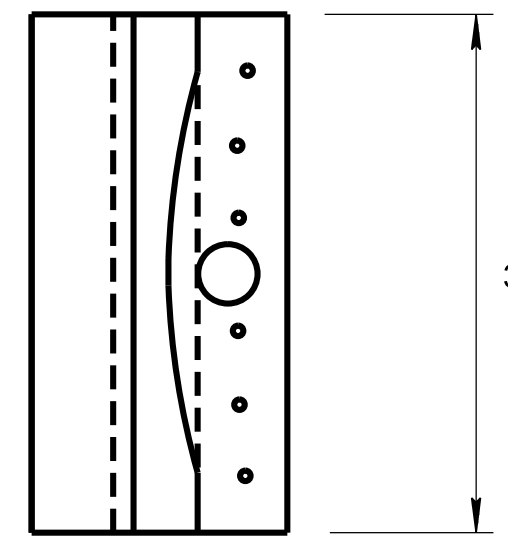
SECTION J - J



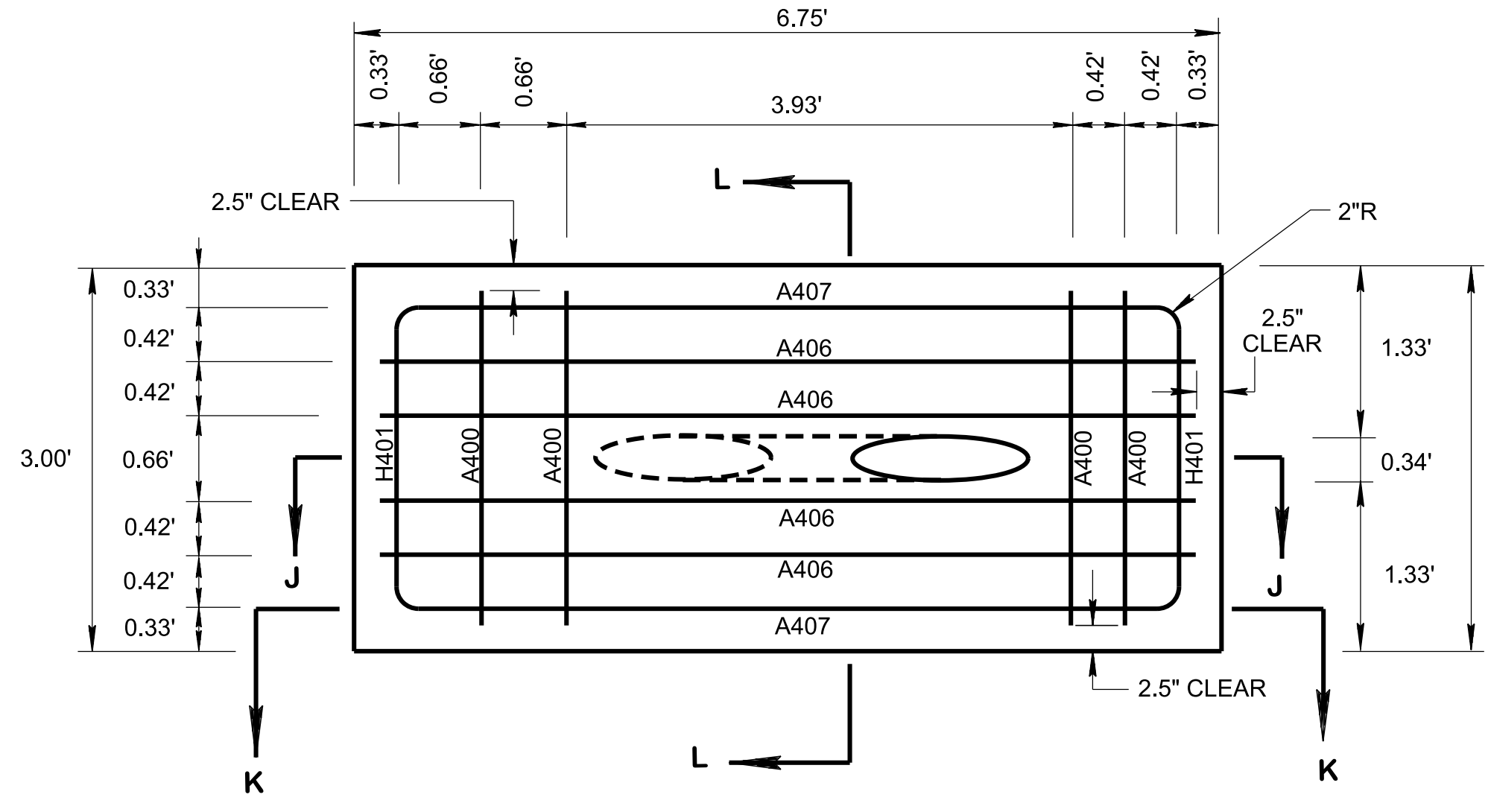
- DETAIL OF RODENT SCREEN**
- INSTALL FRONT EDGE OF RODENT SCREEN 6 INCHES UP INTO PIPE.
 - TO BE INCLUDED IN THE PRICE BID FOR THE LATERAL ENDWALL.



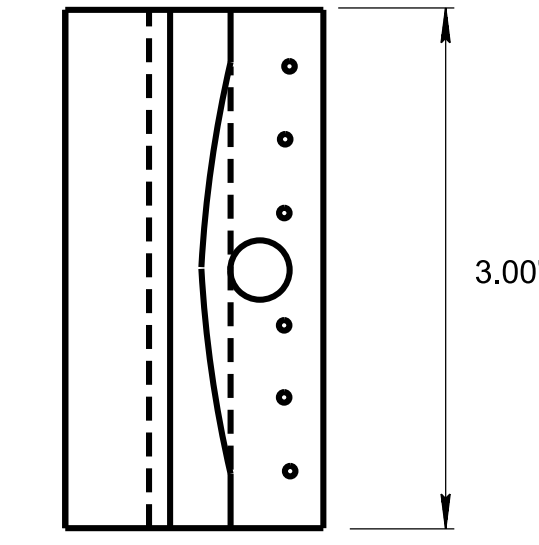
PLAN VIEW



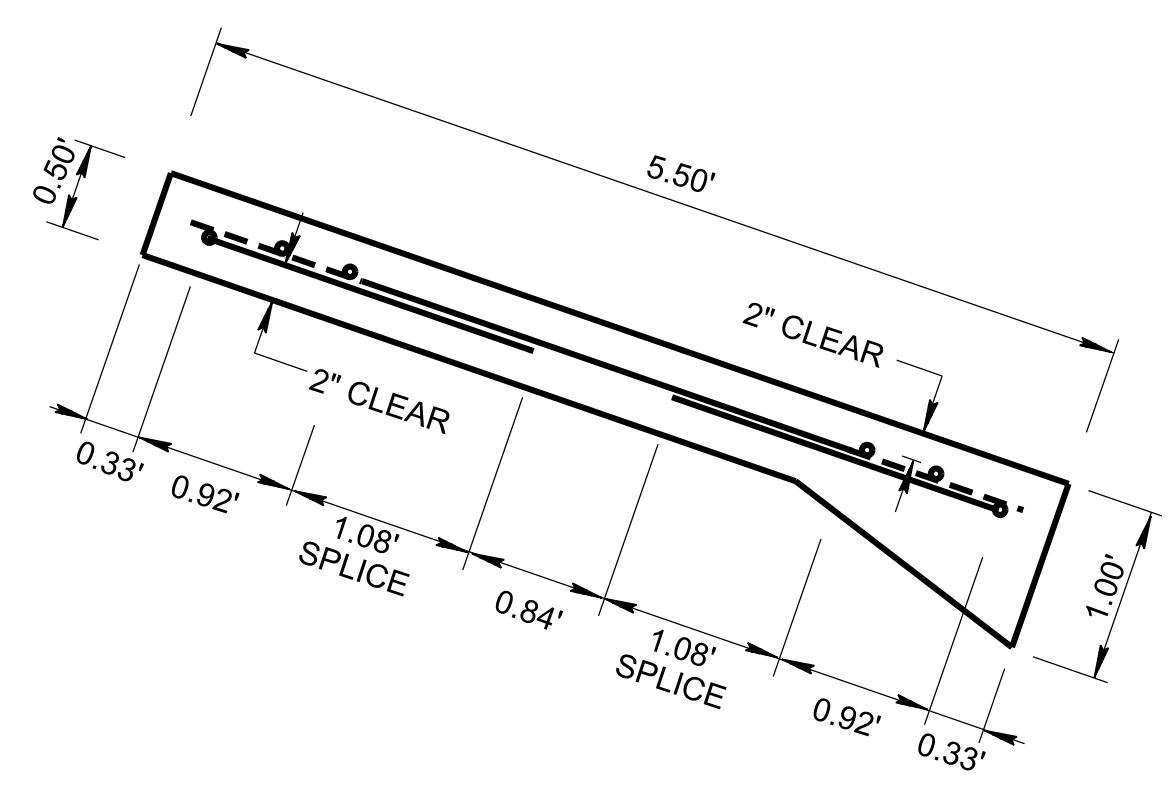
SECTION I - I



PLAN VIEW



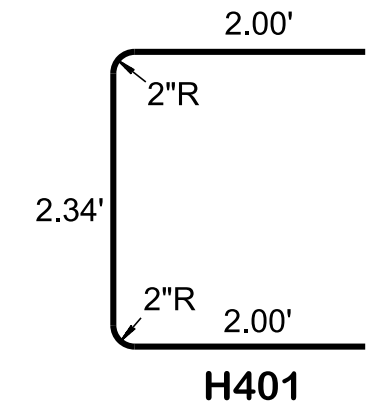
SECTION L - L



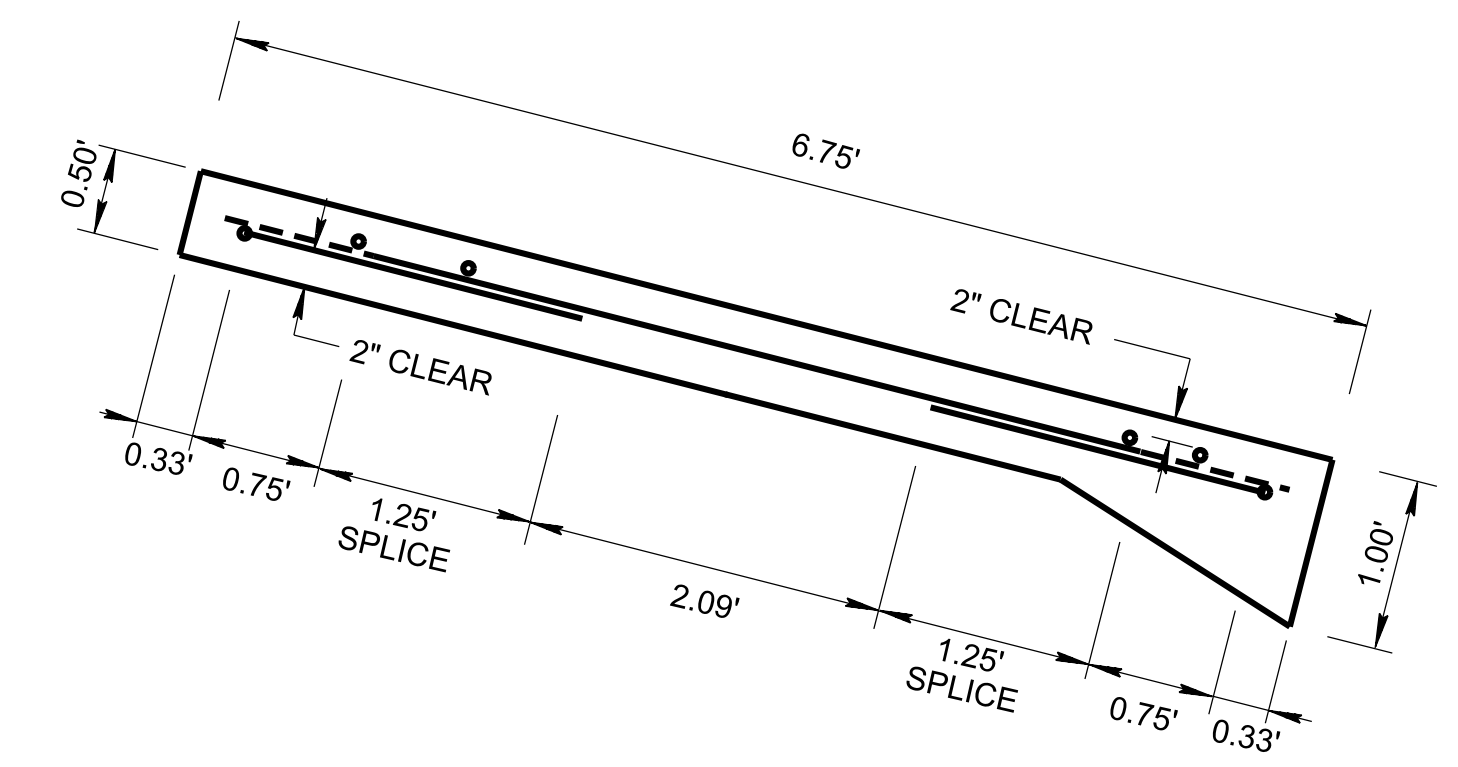
SECTION H - H

A400 SERIES
(SEE TABLE FOR LENGTH)

A400 SERIES	
CODE	LENGTH
A400	2.58'
A401	3.58'
A402	4.33'
A403	2.25'
A404	5.08'
A405	3.00'
A406	6.33'
A407	4.59'
A408	7.83'
A409	6.09'
A410	9.08'
A411	7.34'



STEEL REINFORCING BAR TABLE



SECTION K - K

MATERIAL SPECIFICATIONS

(A) FOR SPECIFICATIONS SEE "STANDARD SPECIFICATION FOR ROAD AND BRIDGE CONSTRUCTION" OF THE TENNESSEE DEPARTMENT OF TRANSPORTATION.

(B) ALL CONCRETE TO BE CLASS "A" CONCRETE $F_c = 3,000$ POUNDS PER SQUARE INCH AT 28 DAYS.

(C) ALL REINFORCING STEEL TO MEET ASTM A615 SPECIFICATION, $F_y = 60,000$ POUNDS PER SQUARE INCH.

MINOR REVISION -- FHWA APPROVAL NOT REQUIRED

STATE OF TENNESSEE
STANDARD DRAWING
DEPARTMENT OF TRANSPORTATION

LATERAL UNDERDRAIN ENDWALL DETAIL FOR 3:1 & 4:1 SLOPES

9/9/2019 12:00:21 PM P:\StandDraw\DESIGN STANDARDS\Standards Drawings Library\Standard Roadway Drawings - CURRENT\In Progress\100.00 Roadway Design Standards IP\100.08 Underdrains IP\RDUD7-20190628.dgn