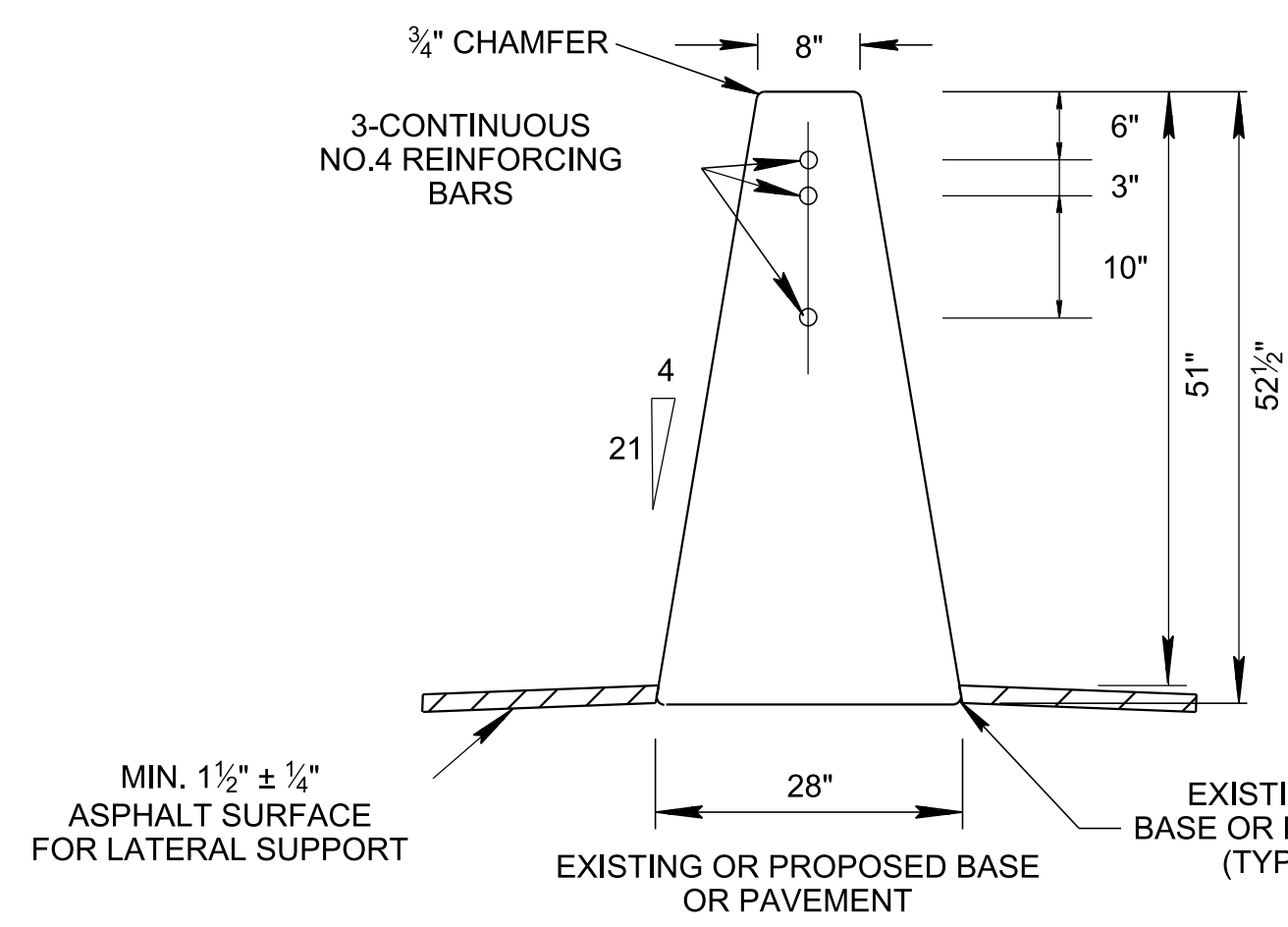
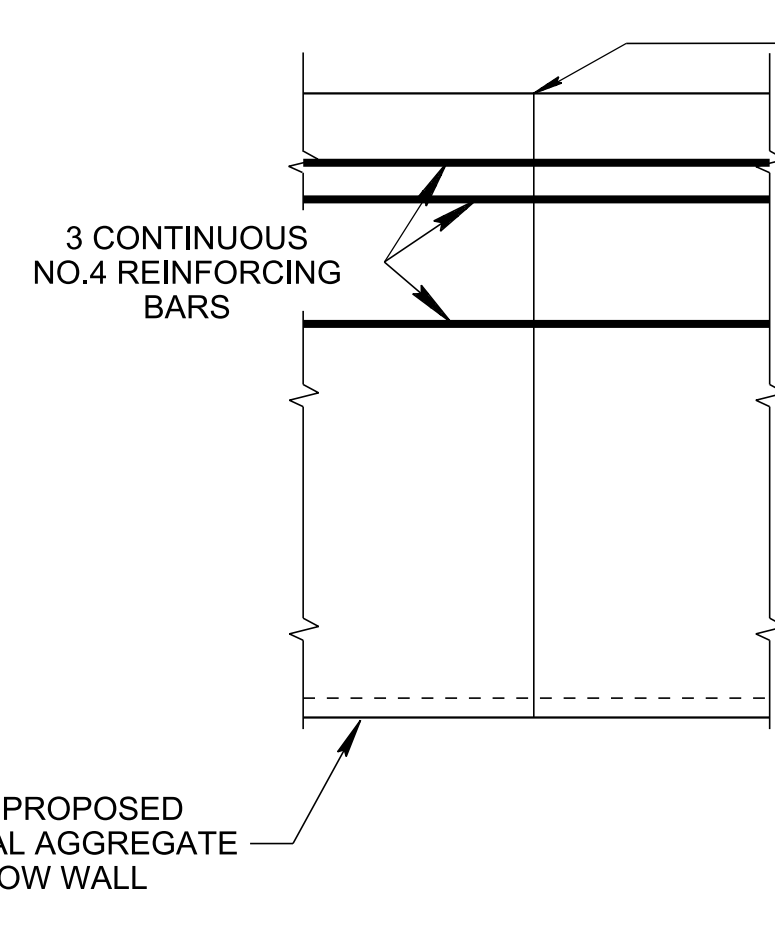


11/17/2023 11:06:04 AM P:\StandDraw\DESIGN STANDARDS\Standards Drawings\Standard Roadway Drawings - CURRENT\In Progress\10-107.00 Safety Design and Guardrails IP\107.09 Concrete Median Barriers IP\SSSMB2-20

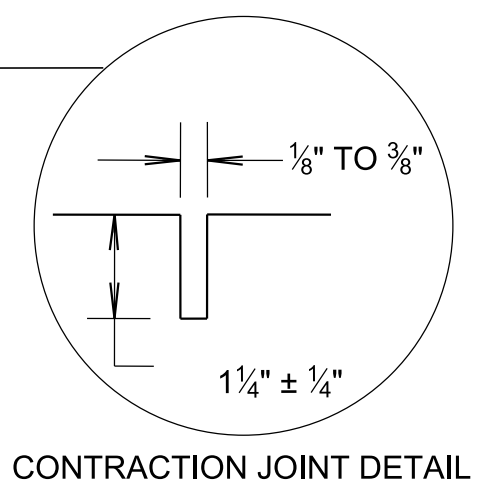


SECTION VIEW

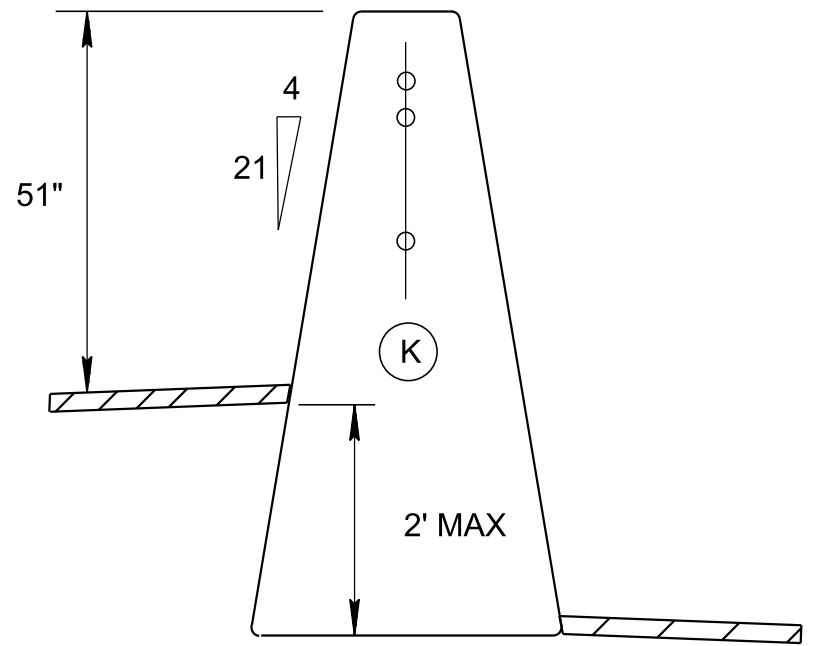
51" HEIGHT WALL



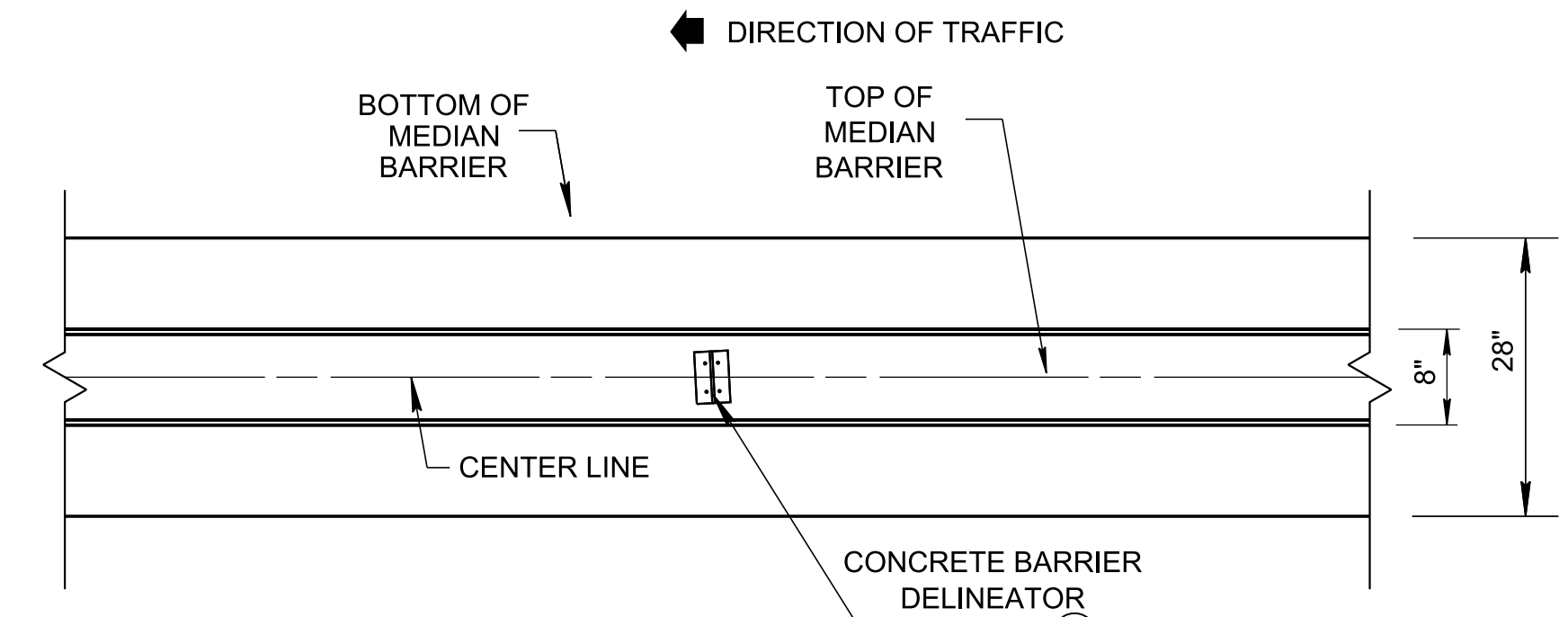
ELEVATION VIEW



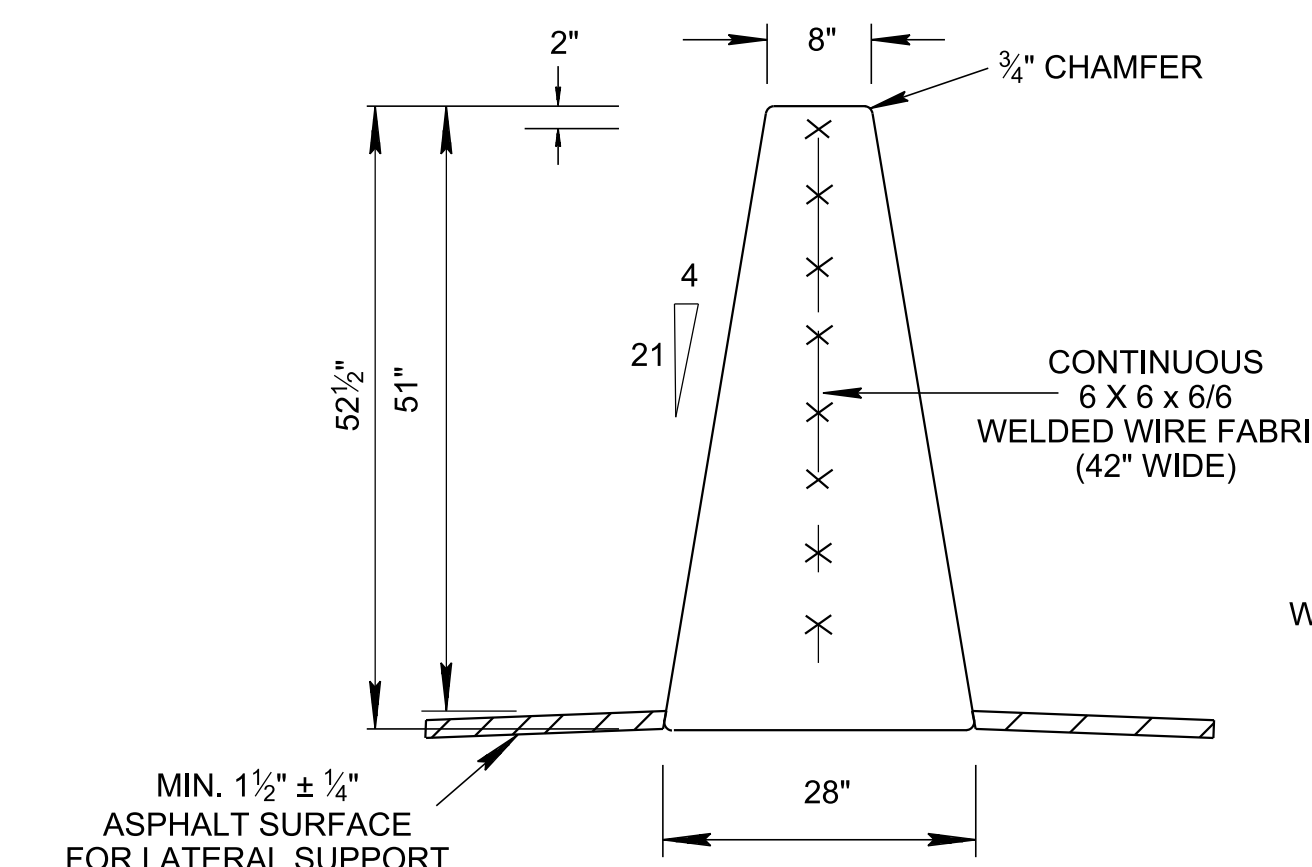
CONTRACTION JOINT DETAIL



GRADE SEPARATION DETAIL

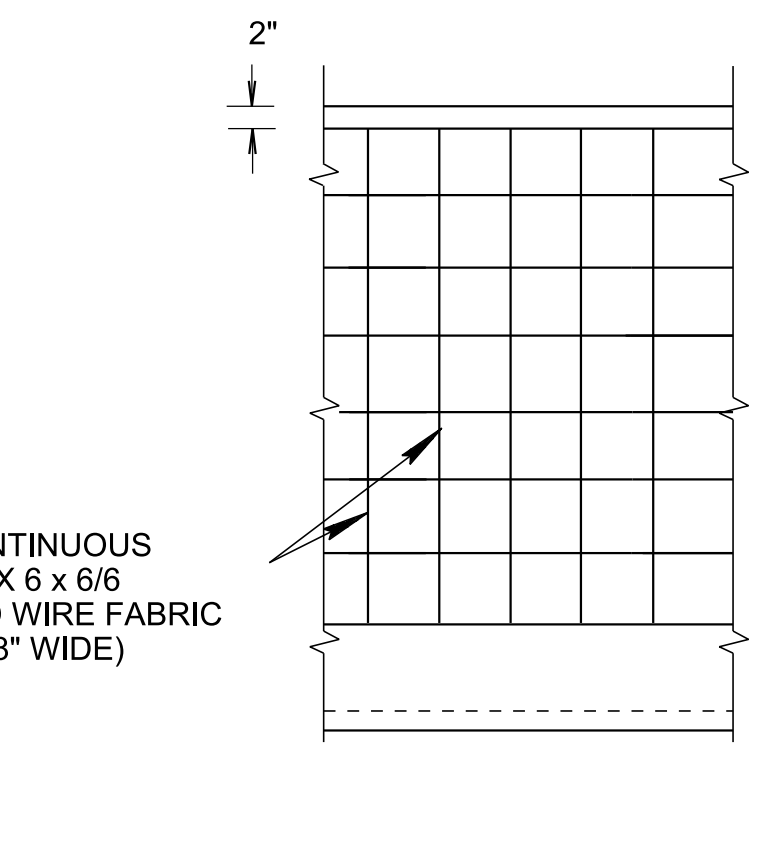


PLAN VIEW

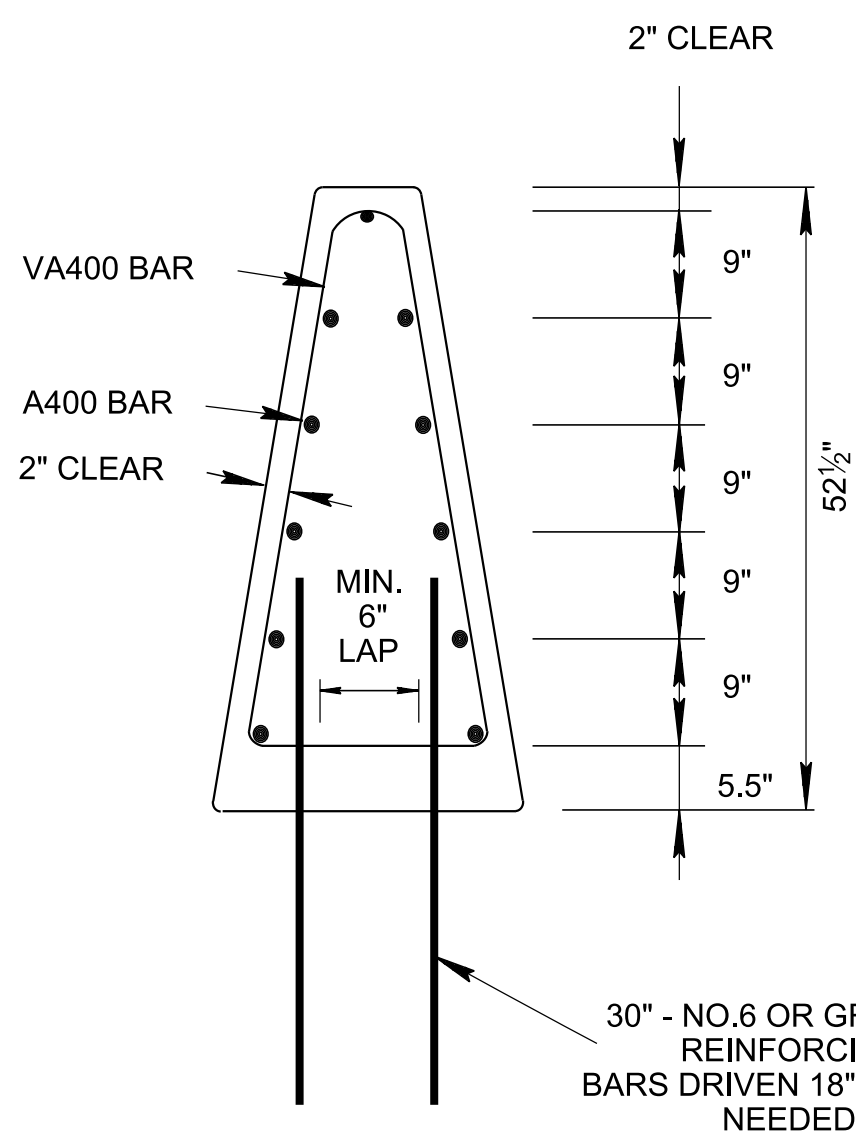


SECTION VIEW

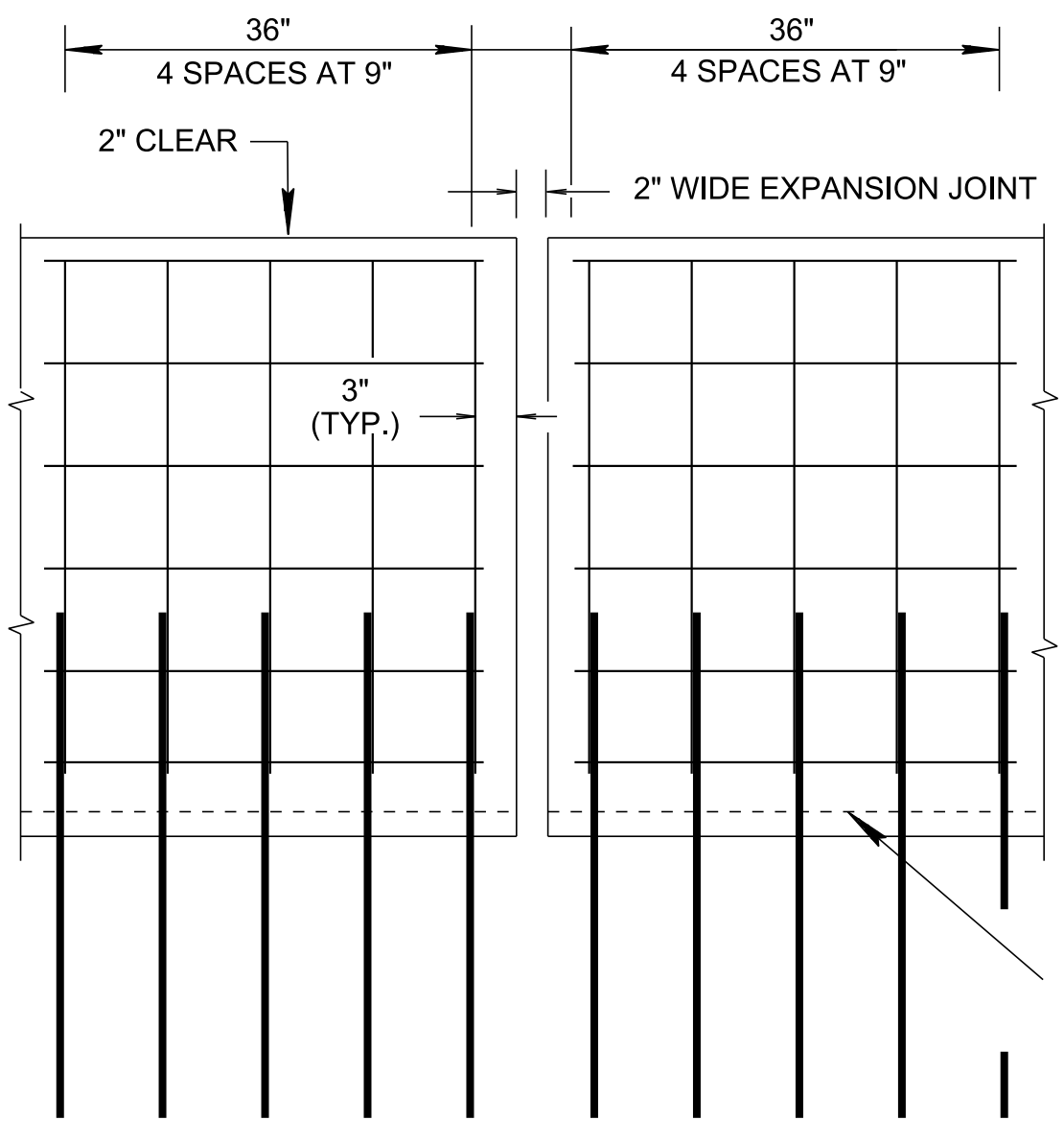
51" HEIGHT WALL WITH ALTERNATE REINFORCING



ELEVATION VIEW



SECTION VIEW



ELEVATION VIEW

DETAILS OF ADDITIONAL REINFORCING AT THE WALL ENDS OR AT EXPANSION JOINT

- ### GENERAL NOTES
- (A) CONCRETE BARRIER WALL SHALL BE CONSTRUCTED IN ACCORDANCE WITH STANDARD SPECIFICATIONS FOR ROAD AND BRIDGE CONSTRUCTION, SECTION 711 AND/OR CURRENT SPECIAL PROVISIONS.
  - (B) IF SAWED CONTRACTION JOINTS ARE USED, THE JOINTS MUST BE SAWED WITHIN FOUR (4) HOURS AFTER THE CONCRETE IS PLACED.
  - (C) THE CONTRACTION JOINTS ARE TO BE SPACED AT 20 TO 25 FOOT INTERVALS WHEN CONSTRUCTED ON ASPHALT PAVEMENT. WHEN THE CONCRETE BARRIER WALL IS ATTACHED TO CONCRETE PAVEMENT THE CONTRACTION JOINTS WILL CORRESPOND TO THE JOINTS IN THE CONCRETE PAVEMENT. THE COST OF MATERIAL AND LABOR FOR THE JOINT INSTALLATION SHALL BE INCLUDED IN THE BID PRICE FOR CONCRETE MEDIAN BARRIER.
  - (D) THE CONCRETE BARRIER WALL SHALL BE GIVEN AN APPLIED TEXTURE FINISH. THE COLOR OF THE FINISH SHALL BE WHITE, FEDERAL SPECIFICATION NO. 37886. THE COST OF MATERIALS AND LABOR FOR THE TEXTURE FINISH SHALL BE INCLUDED IN THE BID PRICE FOR CONCRETE MEDIAN BARRIER.
  - (E) THE TWO (2) INCH OPEN EXPANSION JOINTS SHALL BE PLACED AT A MAXIMUM SPACING NOT TO EXCEED 300 FEET. IF FIXED OBJECTS SUCH AS BRIDGE PIERS, BRIDGE ENDS, OVERHEAD SIGN SUPPORTS, OR OTHER FEATURES PROJECTING THROUGH, INTO OR AGAINST THE BARRIER EXIST THAT REQUIRE TWO INCH EXPANSION JOINTS, THEN THE DISTANCE BETWEEN THE EXPANSION JOINTS IS TO BE REDUCED IN ORDER TO ALLOW AN EQUAL DISTANCE BETWEEN JOINTS THAT IS LESS THAN 300 FEET. ALL ADDITIONAL STEEL REQUIRED AT EXPANSION JOINTS TO BE EPOXY COATED REINFORCING STEEL. THE COST OF MATERIAL AND LABOR FOR THE JOINT INSTALLATION SHALL BE INCLUDED IN THE BID PRICE FOR CONCRETE MEDIAN BARRIER.
  - (F) CHAMFER TOP AND END EDGES 3/4 INCH.
  - (G) BAR SPLICES FOR ROADWAY BARRIER SHALL BE A MINIMUM OF 24 TIMES THE NOMINAL DIAMETER OF THE BAR.
  - (H) ANY METHOD DEvised BY THE CONTRACTOR AND APPROVED BY THE ENGINEER THAT WILL ASSURE THE LONGITUDINAL ROADWAY REINFORCING STEEL WILL BE FIXED AGAINST MOVEMENT AND POSITIONED  $\pm 1/2$  INCH AS DIMENSIONED WHEN TIED TO THE TRANSVERSE ROADWAY REINFORCING STEEL WILL BE SATISFACTORY.
  - (I) PAYMENT WILL BE MADE UNDER ITEM NO. 711-05.71, 51IN SINGLE SLOPE CONCRETE BARRIER WALL, L.F.
  - (J) MIN. SAFETY PERFORMANCE OF 51" SINGLE SLOPE WALL IS ACCEPTABLE ACCORDING TO THE TL-4 EVALUATION CRITERIA SPECIFIED IN NCHRP REPORT 350.
  - (K) IF GRADE SEPARATION EXCEEDS 2' USE S-SSMB-9 INSTEAD.
  - (L) REFER TO STANDARD DRAWING T-M-18A FOR MEDIAN BARRIER DELINEATOR MOUNTING DETAILS AND NOTES. THE COST OF FURNISHING AND INSTALLING MEDIAN BARRIER DELINEATORS SHALL BE INCLUDED WITH THE BID PRICE FOR CONCRETE MEDIAN BARRIERS.

REV. 8-19-13: CHANGED ITEM NUMBER. ADDED GRADE SEPARATION DETAIL.  
 REV. 05-01-20: REDREW SHEET.  
 REV. 10-29-2021: DELINEATOR MOUNTING DETAIL AND DELINEATOR NOTES WERE REMOVED. ADDED GENERAL NOTE (L) FOR DELINEATOR MOUNTING DETAILS REFERENCE STD. DWG. AND PLAN VIEW.

APPROVED BY FHWA  
 (ALL OTHERS APPROVED BY TDOT)

STATE OF TENNESSEE  
 STANDARD DRAWING  
 DEPARTMENT OF TRANSPORTATION

51"  
 SINGLE SLOPE  
 CONCRETE  
 BARRIER  
 WALL