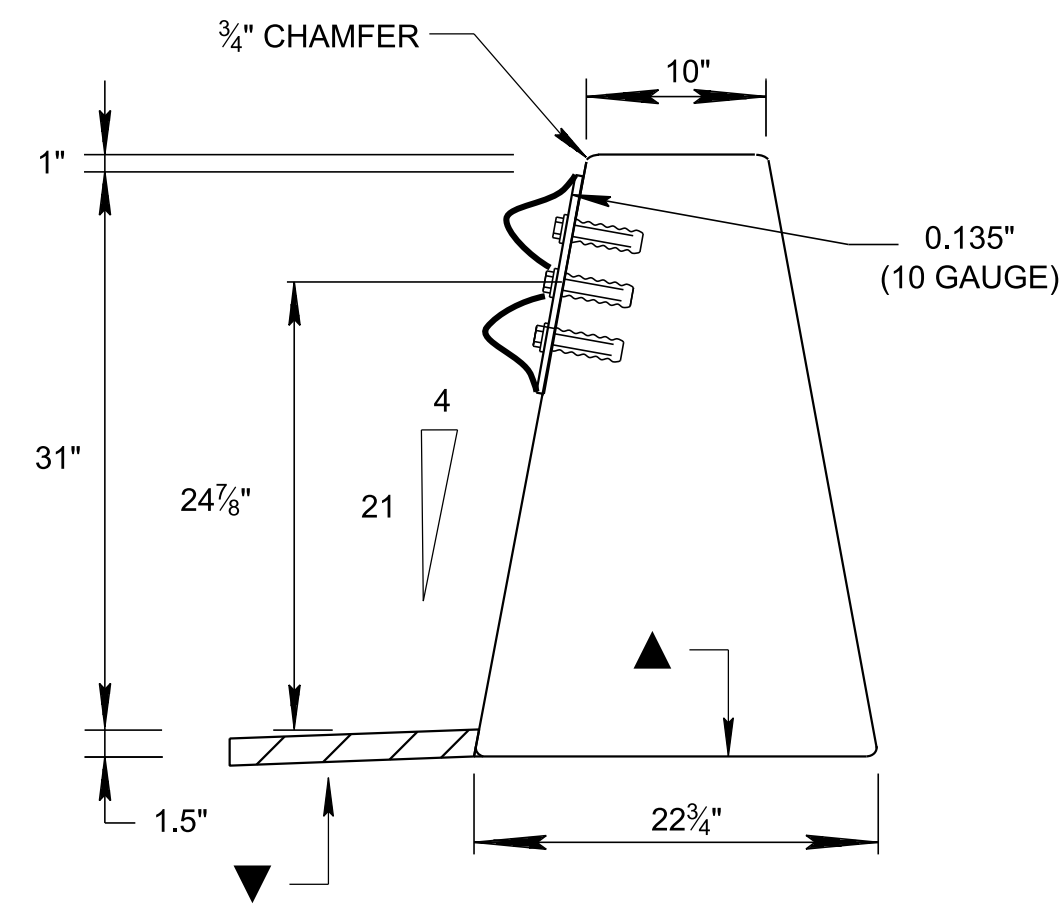
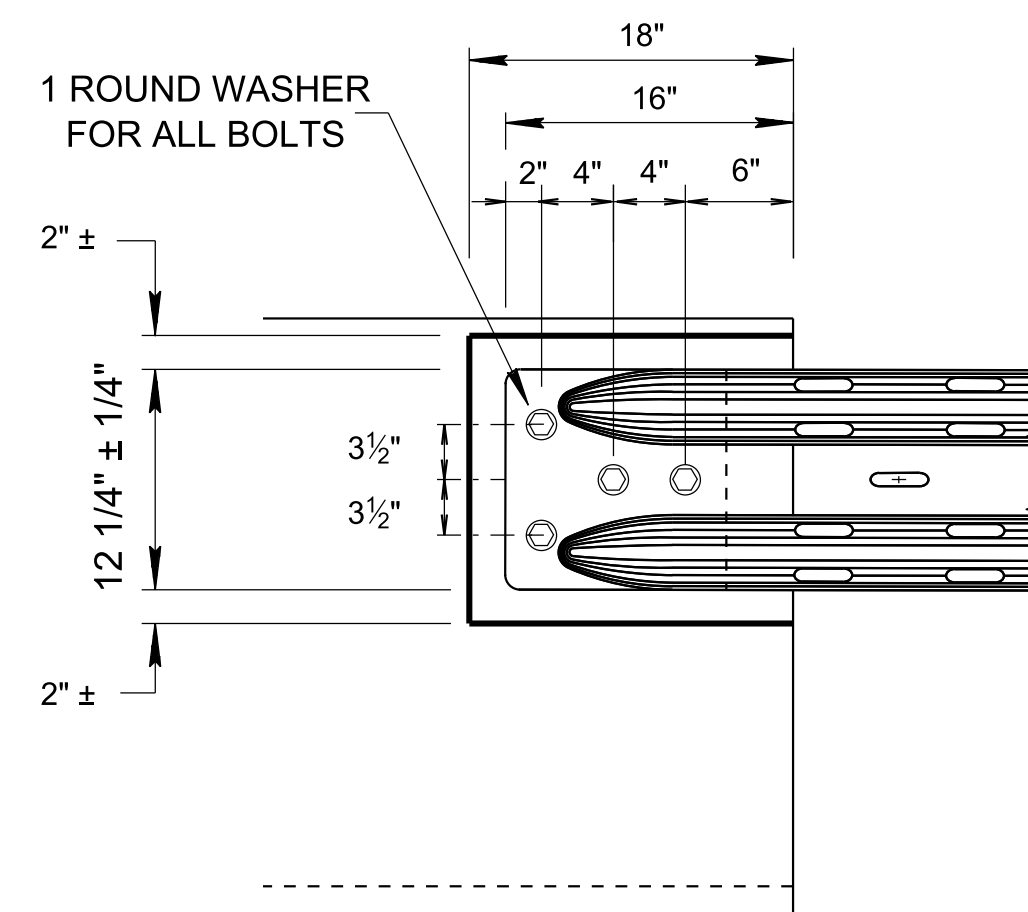


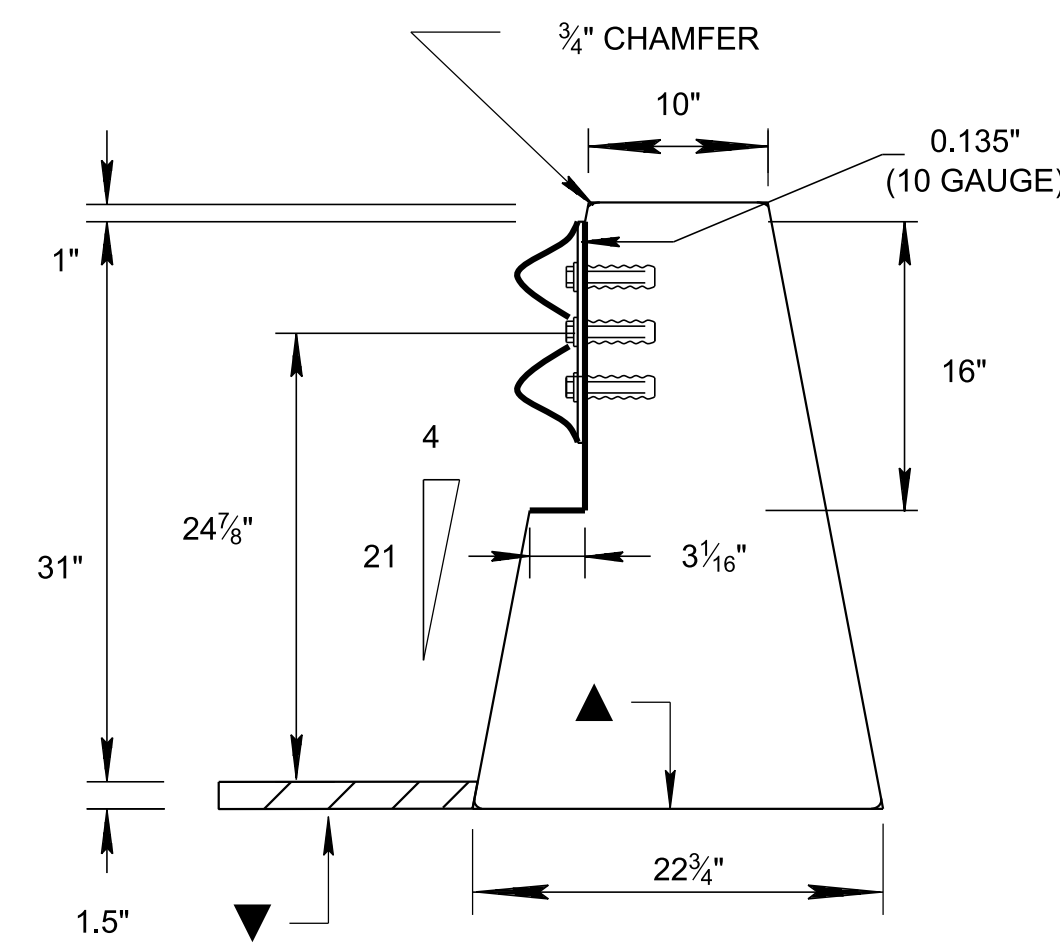
PLAN VIEW



CROSS-SECTION VIEW (ALTERNATE)



ELEVATION VIEW



CROSS-SECTION VIEW

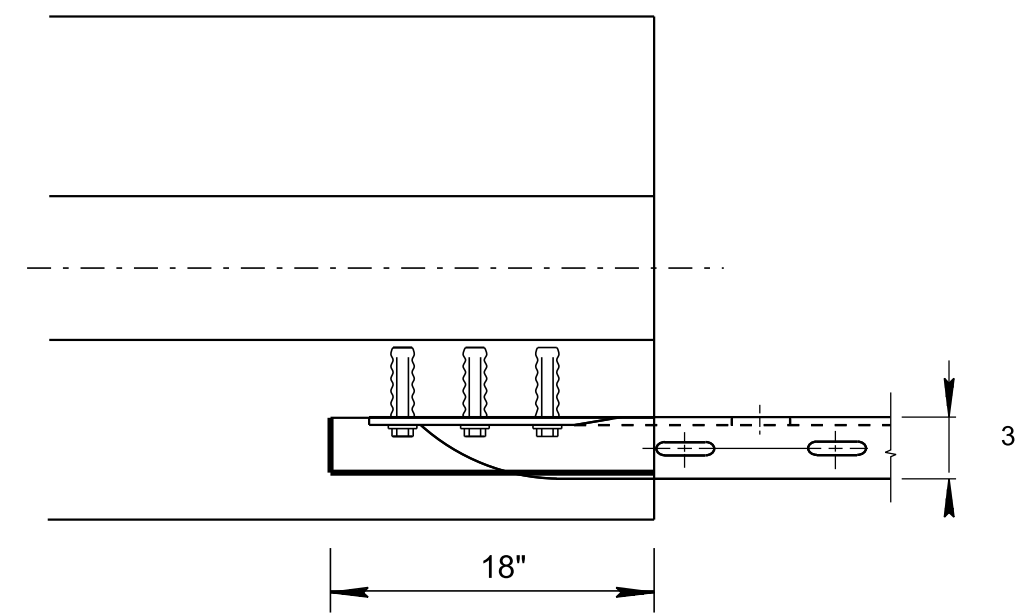
MIN. 1 1/2" ACP OR EQUIVALENT FOR LATERAL SUPPORT

32" SINGLE SLOPE CONCRETE BARRIER WALL

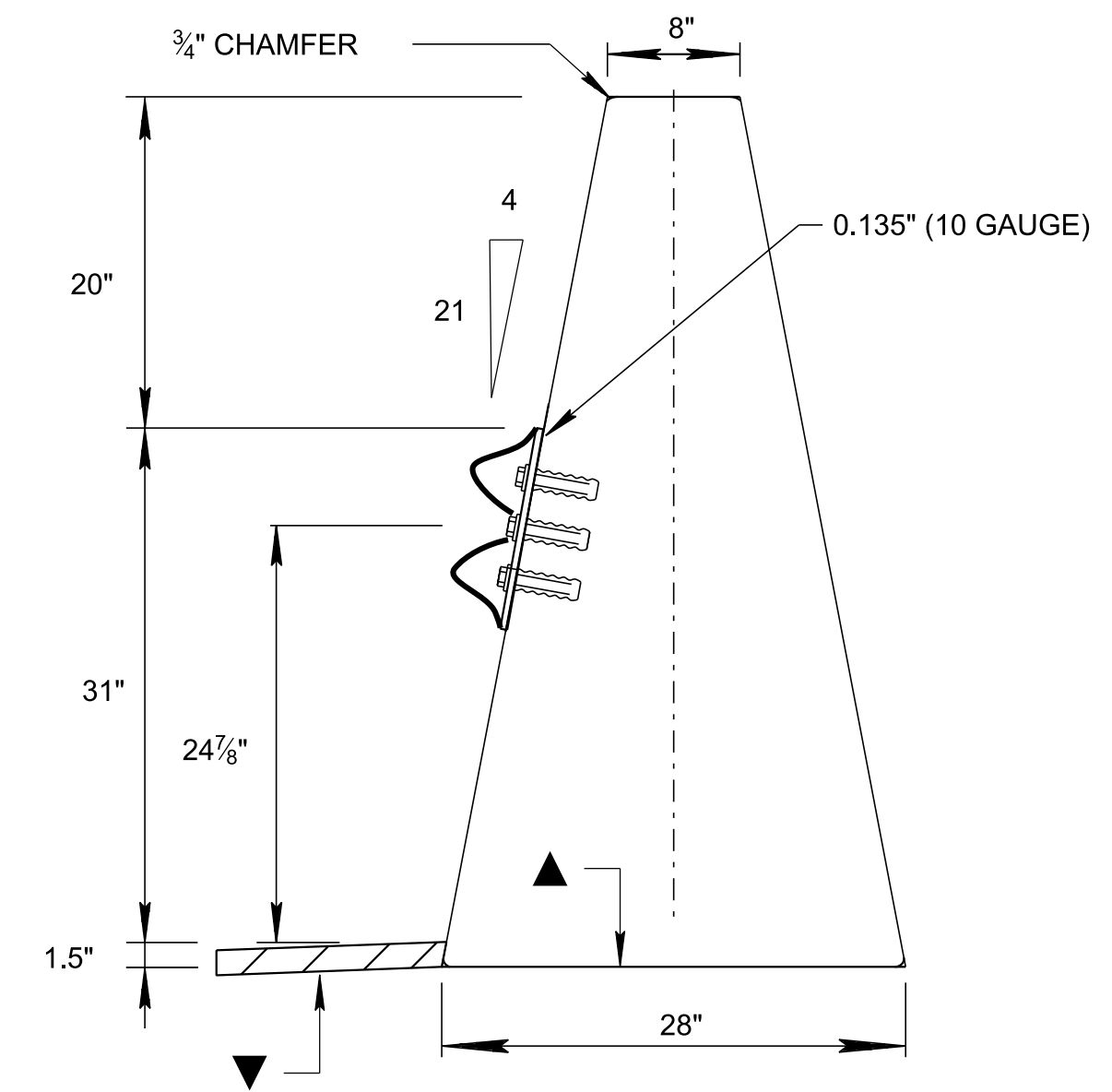
LEGEND

- ▲ EXISTING OR PROPOSED BASE OR MINERAL AGGREGATE BELOW WALL (TYP.)
- ▼ MIN. 1 1/2" ACP OR EQUIVALENT FOR LATERAL SUPPORT

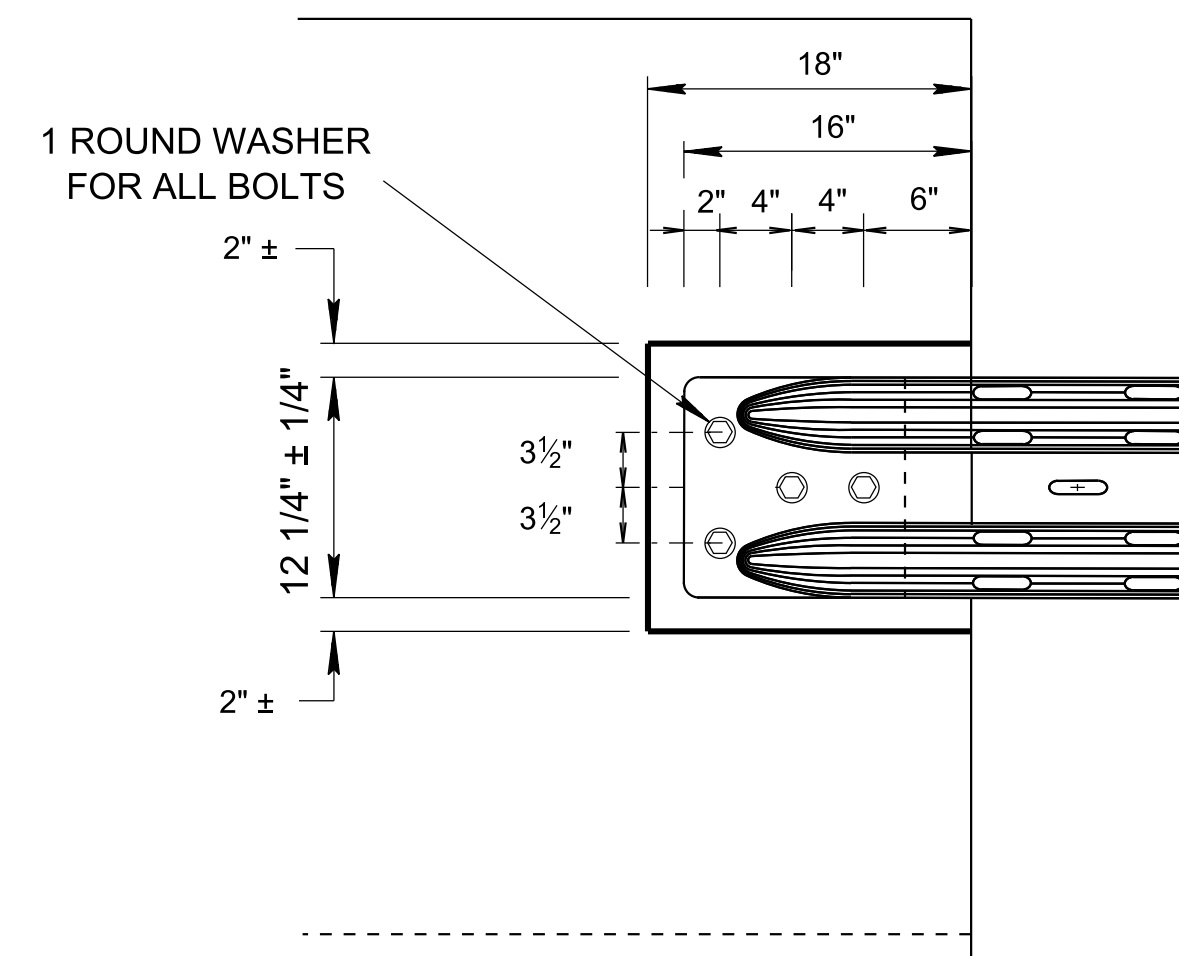
THIS DRAWING IS TO BE USED FOR MAINTENANCE PROJECTS ONLY. THIS DRAWING IS NOT INTENDED TO BE USED FOR NEW CONSTRUCTION OR RECONSTRUCTION PROJECTS.



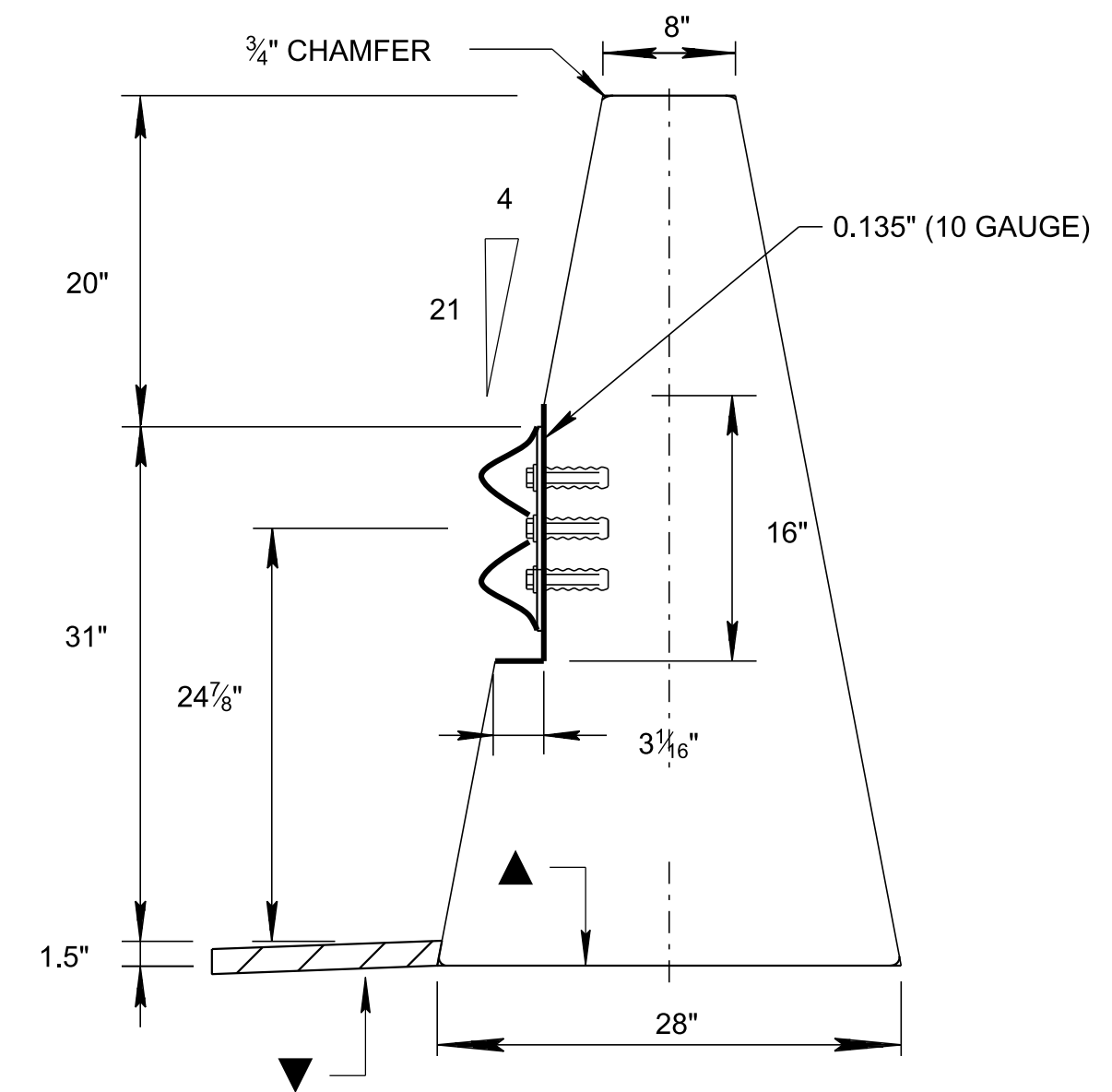
PLAN VIEW



CROSS-SECTION VIEW (ALTERNATE)



ELEVATION VIEW



CROSS-SECTION VIEW

51" SINGLE SLOPE CONCRETE BARRIER WALL

GENERAL NOTES

- ① THE INSERTS ARE TO BE THREADED A MINIMUM OF 1 3/4". THE CONTRACTOR SHALL FURNISH ANCHOR PULL-OUT DATA FROM AN INDEPENDENT TESTING LABORATORY USING CLASS "A" CONCRETE IN ACCORDANCE WITH STATE OF TENNESSEE "STANDARD SPECIFICATIONS FOR ROAD AND BRIDGE CONSTRUCTION". THE ULTIMATE LOAD FOR 7/8" ANCHOR SHALL BE 19,000 POUNDS. BOLTS SHALL CONFORM TO ASTM A307.
- ② THE MASONRY ANCHORS SHALL BE SUB-SET IN THE CONCRETE AT A DEPTH OF BETWEEN 3/32" TO 1/4" AND TORQUED WITH THE END TERMINAL IN THE PLACE TO AN EQUIVALENT DIRECT PULL-OUT LOAD OF 12,000 POUNDS. SLIPPAGE SHALL NOT EXCEED 1/4".
- ③ THE CONTRACTOR WILL PERFORM ON-SITE TESTING OF EACH BOLT IN THE PRESENCE OF TDOT PERSONNEL TO ENSURE THESE REQUIREMENTS ARE MET. ANY INSTALLATION NOT MEETING WILL BE REJECTED.
- ④ BOLTS AND WASHERS TO BE GALVANIZED CONFORMING TO REQUIREMENTS OF ASTM A153.
- ⑤ SEE S-SSMB-1 AND S-SSMB-2 FOR ADDITIONAL DETAILS.

STATE OF TENNESSEE
STANDARD DRAWING
DEPARTMENT OF TRANSPORTATION

GUARDRAIL ATTACHMENT TO EXISTING SINGLE SLOPE CONCRETE BARRIER WALL