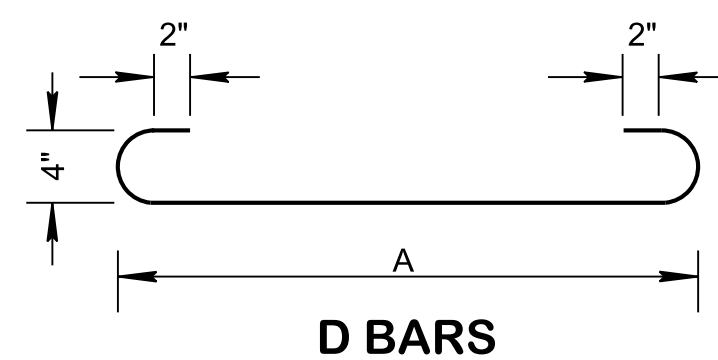
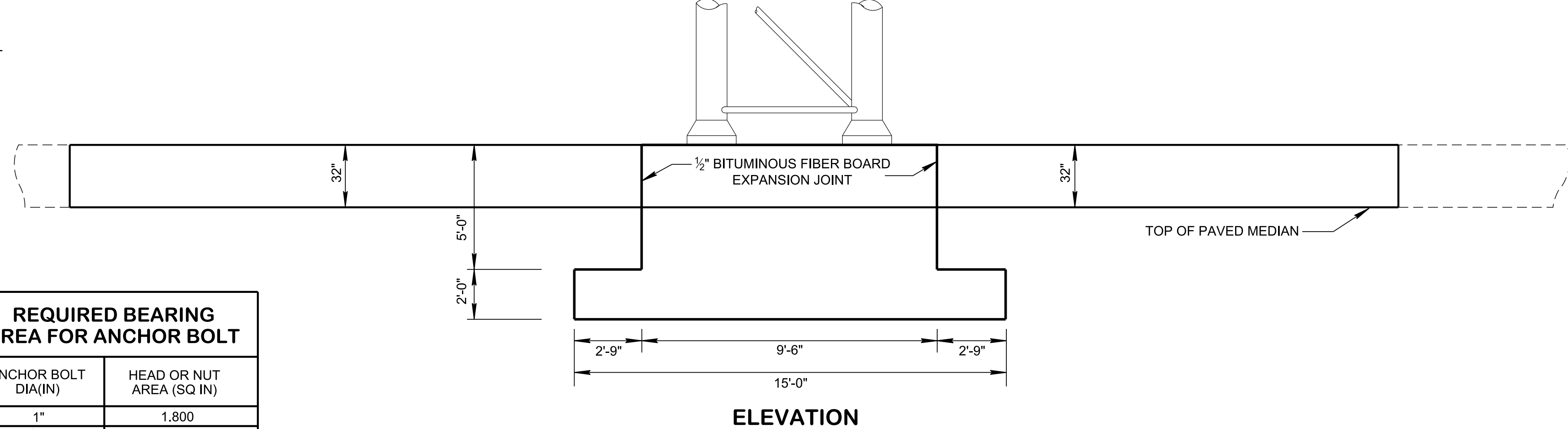
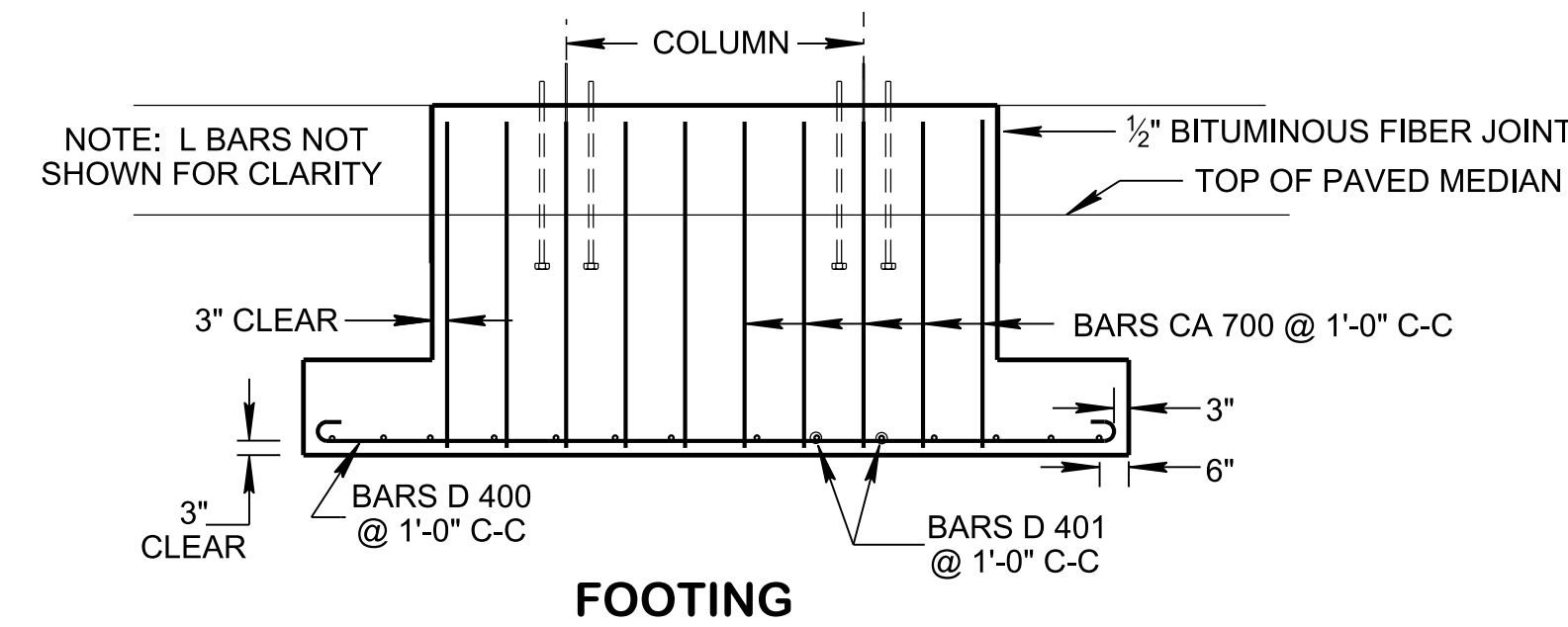
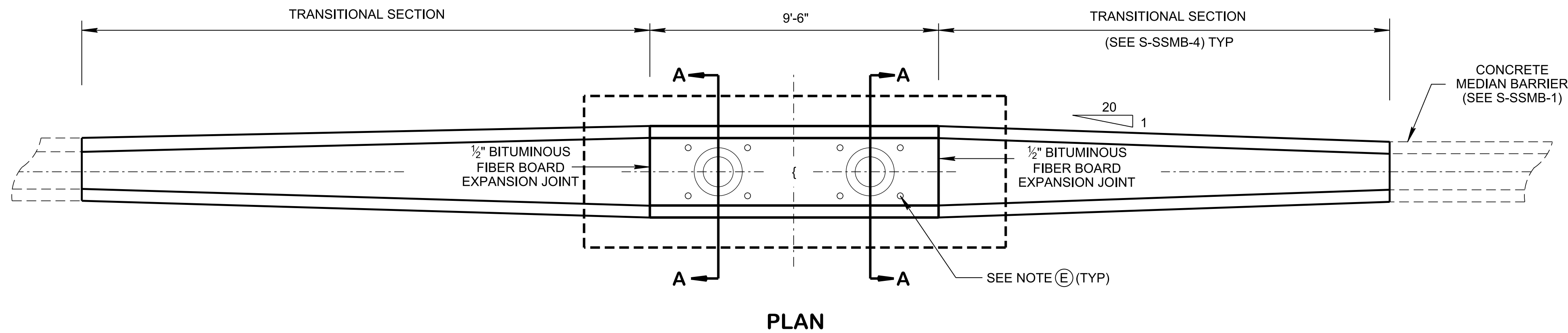
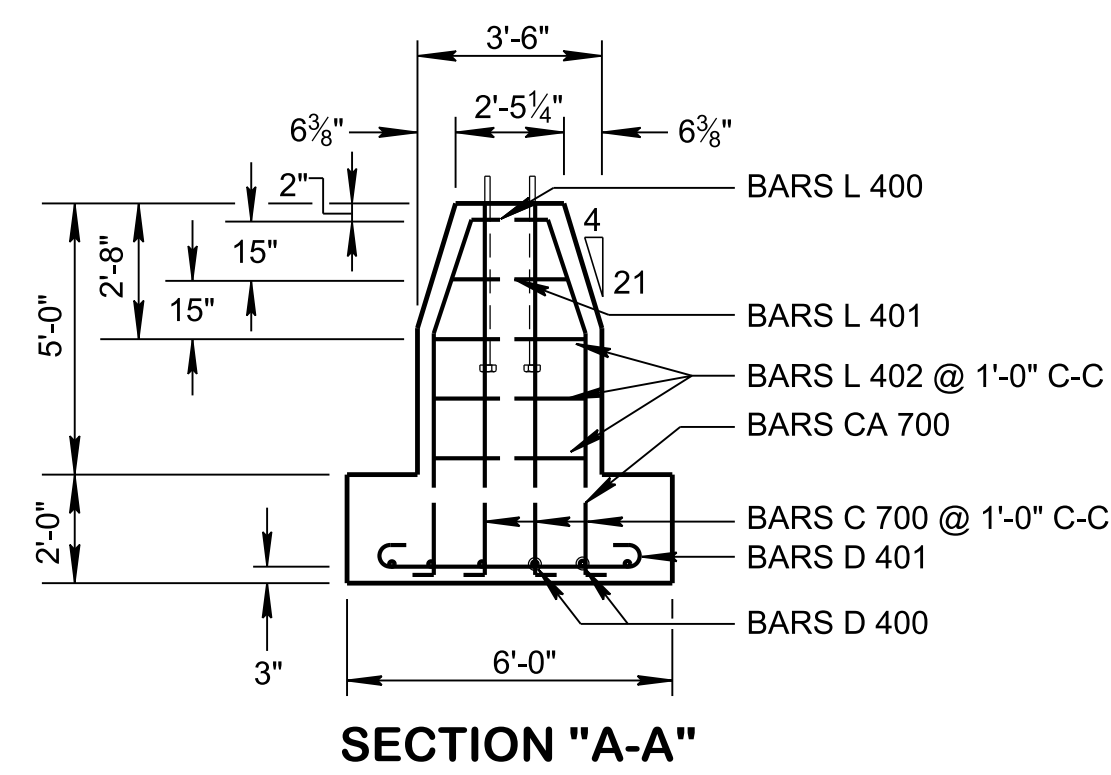
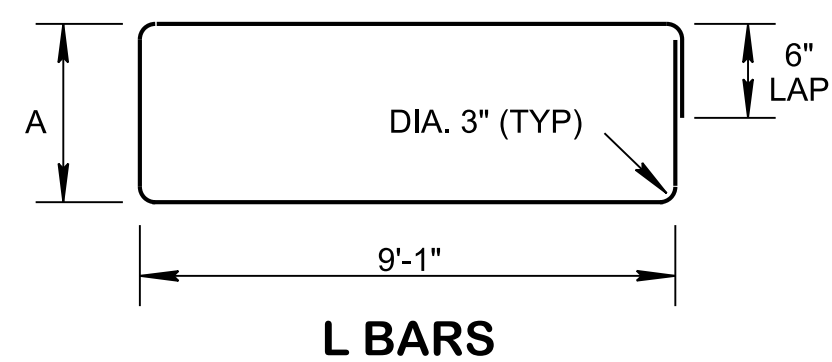


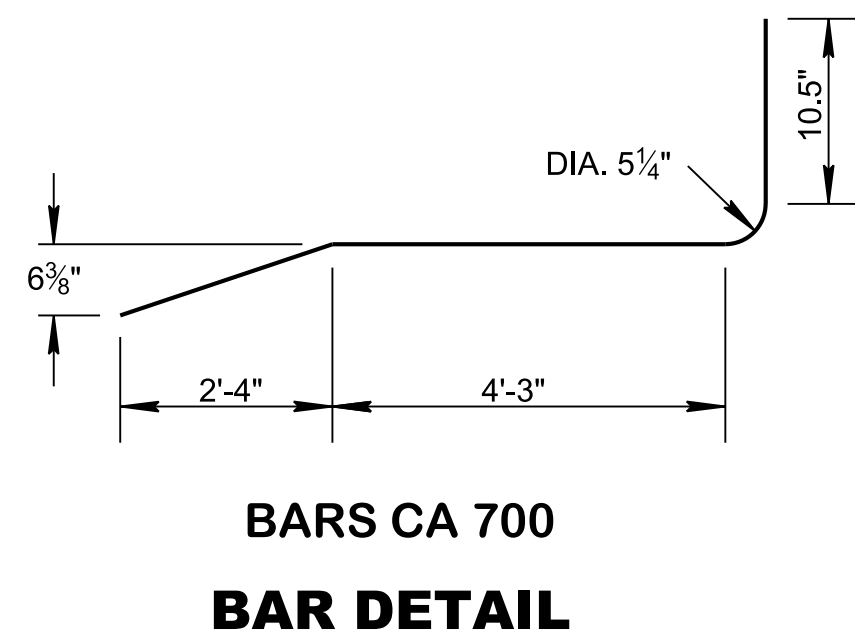
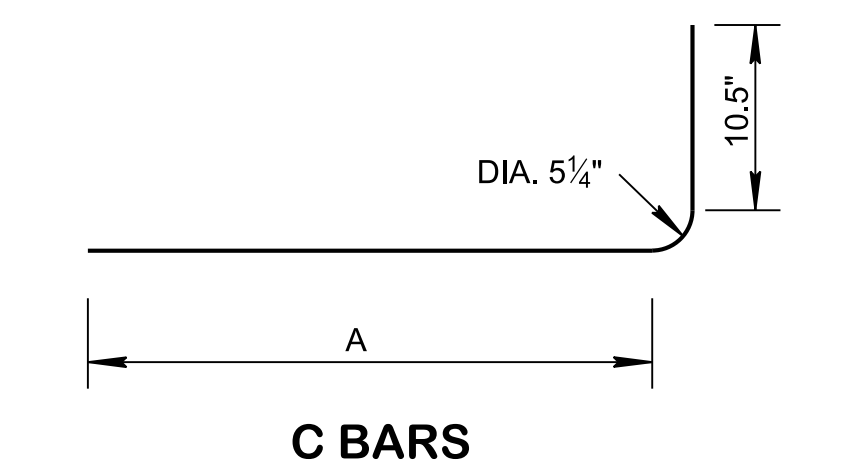
4/22/2020 3:22:14 PM P:\StandDraw\DESIGN STANDARDS\Standards Drawings\Standard Roadway Drawings - CURRENT\In Progress\10-106.00 Safety Design and Guardrails IP\SSSMB7-20



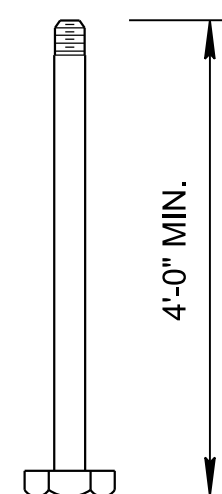
| REQUIRED BEARING AREA FOR ANCHOR BOLT | |
|---------------------------------------|--------------------------|
| ANCHOR BOLT DIA (IN) | HEAD OR NUT AREA (SQ IN) |
| 1" | 1.800 |
| 1 1/4" | 2.812 |
| 1 1/2" | 4.050 |
| 1 3/4" | 5.512 |
| 2" | 7.199 |
| 2 1/4" | 9.122 |
| 2 1/2" | 11.249 |



| BILL OF STEEL - PER FOOTING | | | | |
|-----------------------------|------|------------|-----------|-------------|
| BAR | SIZE | NO. REQ'D. | DIM A | LENGTH |
| C 700 | 7 | 4 | 6'-6" | 7'-8" |
| CA 700 | 7 | 20 | | 7'-9" |
| D 400 | 4 | 6 | 14'-6" | 15'-10" |
| D 401 | 4 | 15 | 5'-6" | 6'-10" |
| L 400 | 4 | 1 | 2'-4" | 23'-0" |
| L 401 | 4 | 1 | 2'-7 3/4" | 23'-11 1/2" |
| L 402 | 4 | 3 | 3'-2" | 25'-0" |



| QUANTITIES | |
|--------------------|-----------|
| CLASS "A" CONCRETE | 12.0 C.Y. |
| REINFORCING STEEL | 593 LB. |



ANCHOR BOLT DETAIL

ASTM F1554 ANCHOR BOLTS (55KSI, HEADED OR THREADED/NUTTED) TO BE DESIGNED BY SIGN STRUCTURE MANUFACTURER. SEE FOR MIN BEARING AREA OF HEAD OR NUT

NOTE TO DESIGNER

THIS DRAWING IS FOR MAINTENANCE ACTIVITY ONLY. THE DESIGNER IS TO USE 51" MEDIAN BARRIER WALL ON ALL NEW CONSTRUCTION PROJECTS. SEE STANDARD DRAWING S-SSMB-8.

GENERAL NOTES

(A) FINISHED CONCRETE SURFACES: CONCRETE FINISHING SHALL BE IN ACCORDANCE WITH SECTION 604.22 OF THE TENNESSEE STANDARD SPECIFICATIONS EXCEPT AS MODIFIED BY THE SPECIAL PROVISION NO. 130 REGARDING SECTION 604-CONCRETE STRUCTURES. A TEXTURED COATED FINISH SHALL BE USED IN LIEU OF A CLASS 2 FINISH. THE COLOR OF THE FINISH SHALL BE SIMILAR TO WHITE FEDERAL SPECIFICATION NO. 37778, A COLOR SAMPLE SHALL BE SUBMITTED TO THE MATERIALS AND TEST ENGINEER FOR APPROVAL.

(B) EPOXY COATED DOWEL BARS WILL BE PERMITTED AS AN ALTERNATE TO PAINTED AND GREASED DOWEL BARS. THE EPOXY COATING SHALL BE AN APPROVED HIGH DENSITY POLYETHYLENE 17 MILS (± 2 MILS) BONDED TO THE BAR WITH AN APPROVED ADHESIVE 1 TO 8 MILS THICK (4 MILS NOMINAL).

(C) IF A STORM DRAINAGE SYSTEM IS PLACED UNDER THE CENTER LINE OF THE MEDIAN BARRIER, THE PIPE SHALL BE SHIFTED HORIZONTALLY AROUND THE FOOTING.

(D) OVERHEAD SIGN FOOTING COST IS TO BE INCLUDED IN THE COST OF THE OVERHEAD SIGN STRUCTURE.

(E) LOCATION OF ANCHOR BOLTS TO BE DETERMINED IN THE FIELD BY THE ENGINEER TO MATCH SIGN STRUCTURE MANUFACTURERS SHOP DRAWING.

(F) ANCHOR BOLTS, NUTS AND WASHERS ARE TO BE GALVANIZED STEEL.

(G) CONCRETE: F_c = 4000 POUNDS PER SQUARE INCH AT 28 DAYS.
 REINFORCING STEEL: ASTM A615, F_y = 60,000 POUNDS PER SQUARE INCH
 ALL REINFORCEMENT IS TO BE INSTALLED AS DETAILED ON THIS DRAWING.

STATE OF TENNESSEE
 STANDARD DRAWING
DEPARTMENT OF TRANSPORTATION

FOOTING DETAILS FOR OVERHEAD SIGN STRUCTURE
32" MEDIAN BARRIER WALL

REV. 12-4-13: CHANGED ANCHOR BOLTS TO THREADED.
 REV. 5-10-14: REVISED BILL OF STEEL.
 REV. 05-01-20: ADDED NOTE TO DESIGNER. REDREW SHEET.