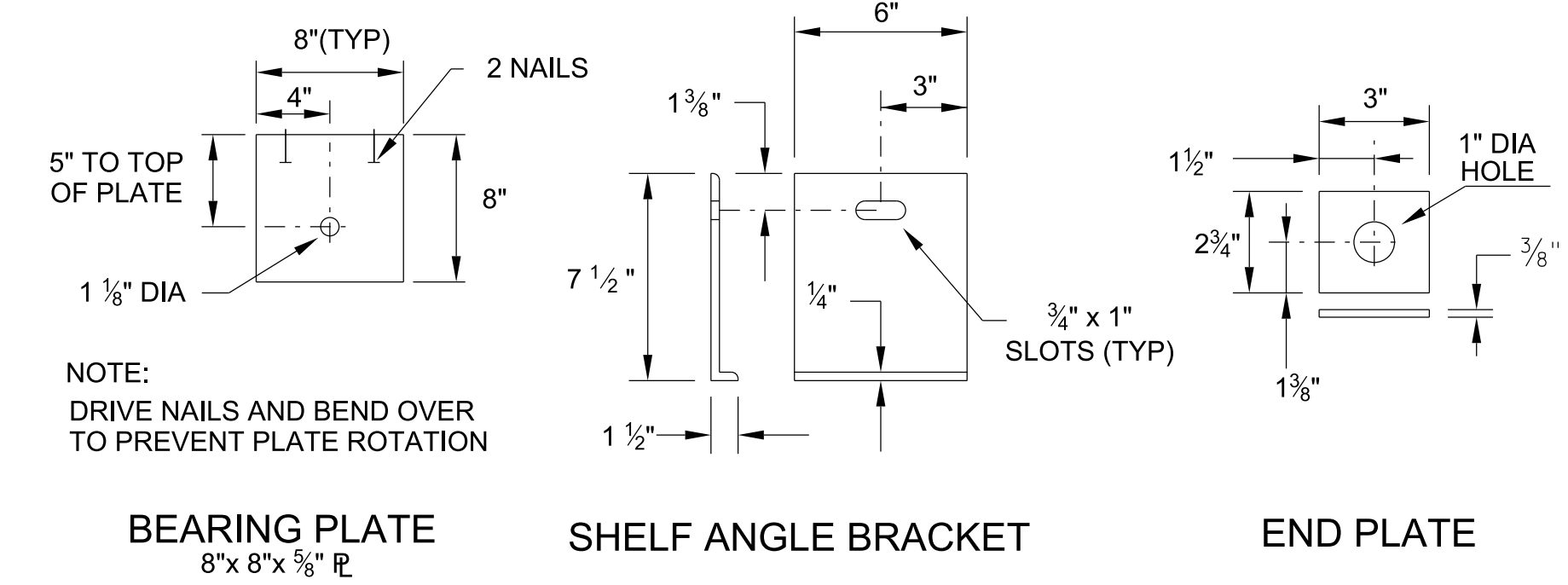
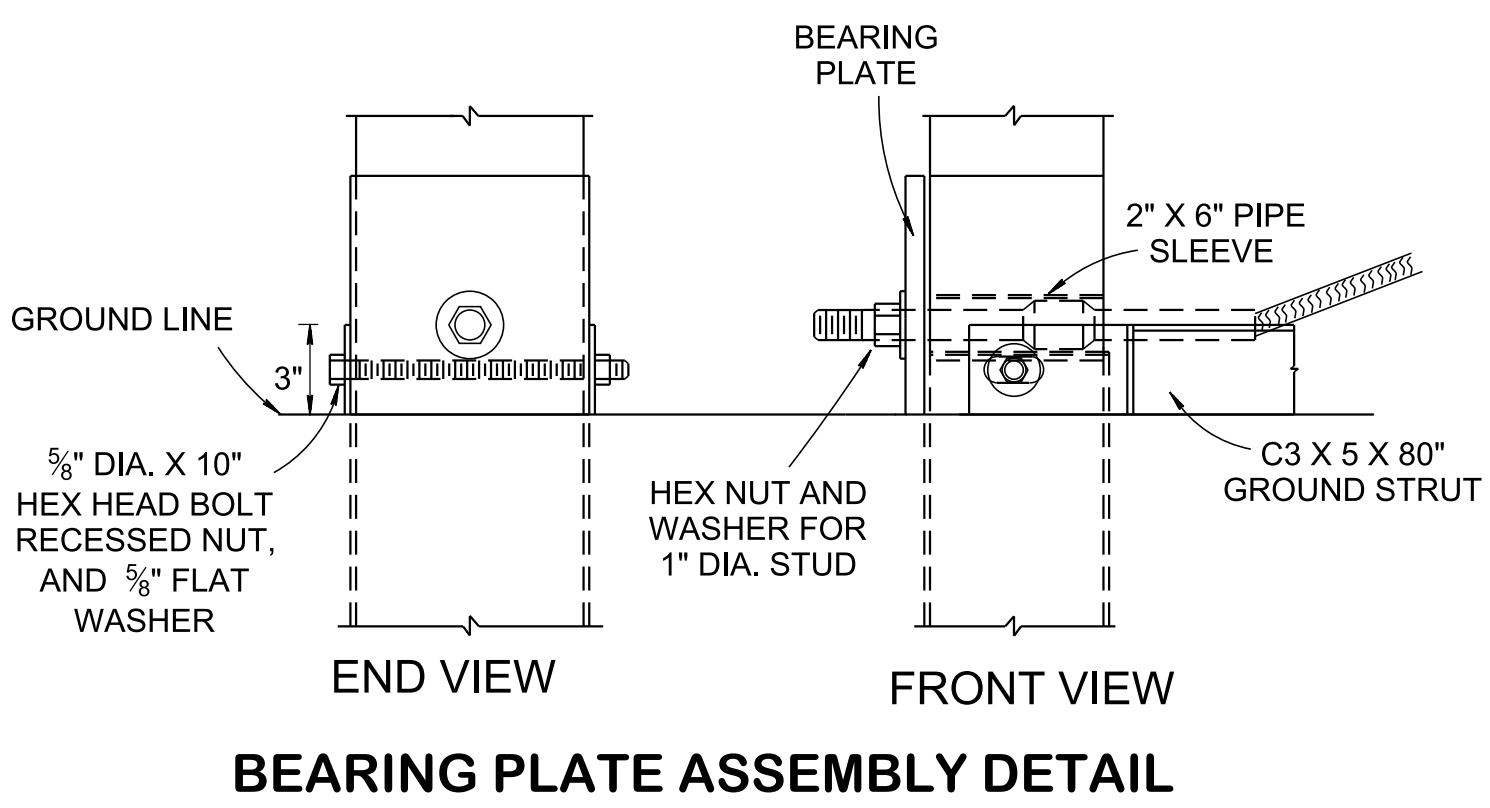
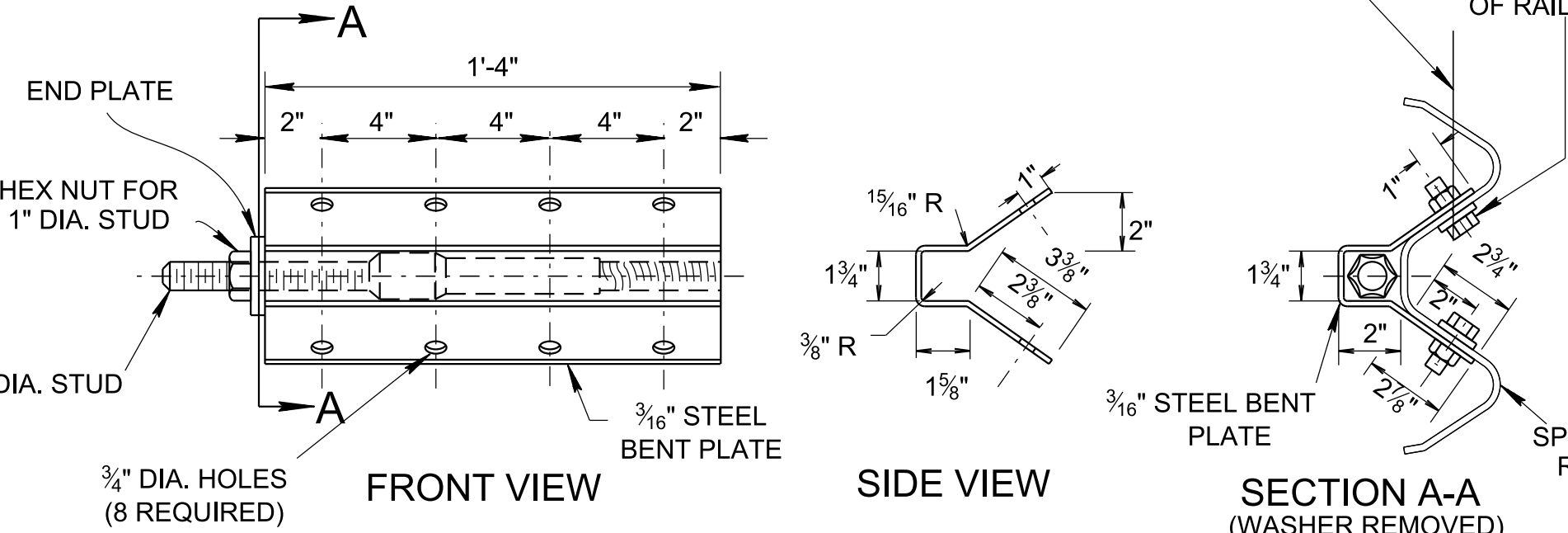
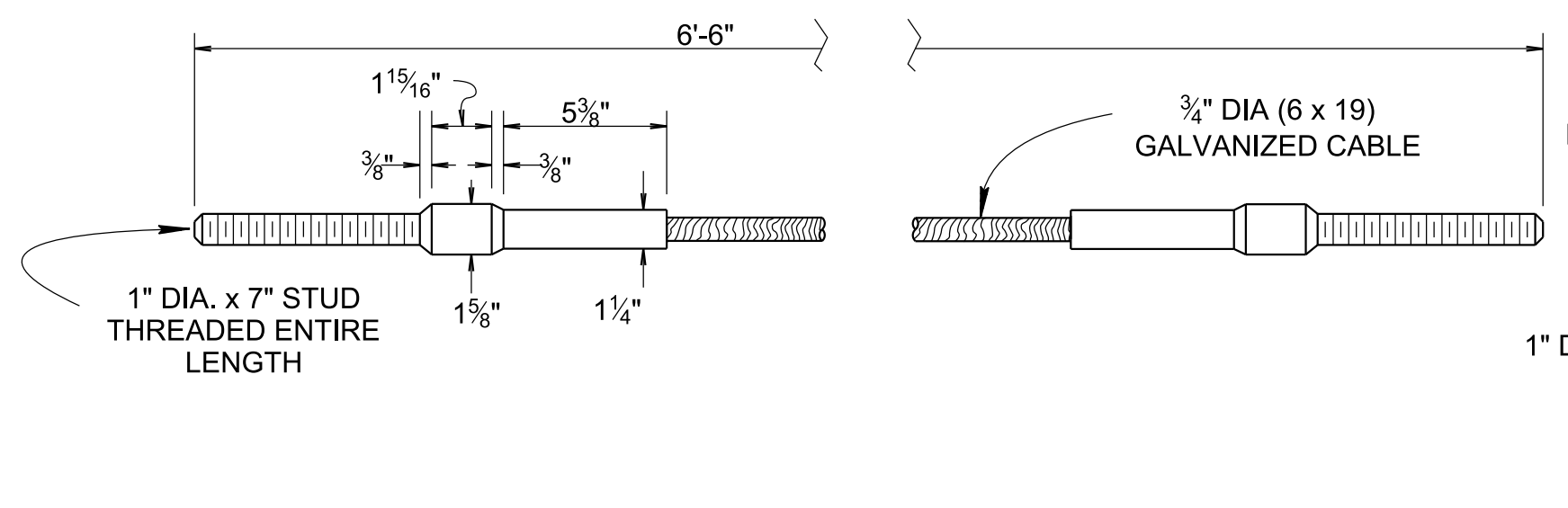
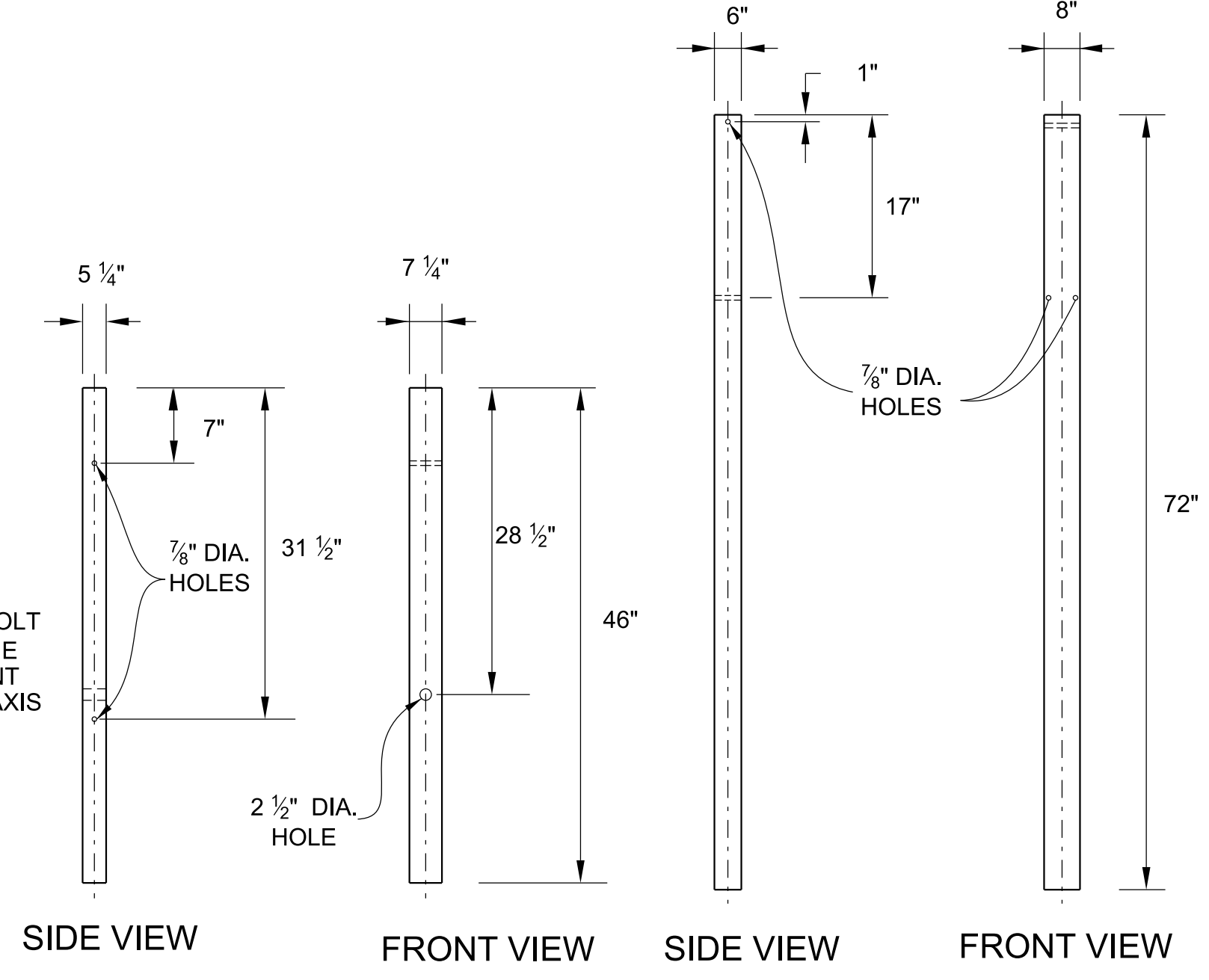
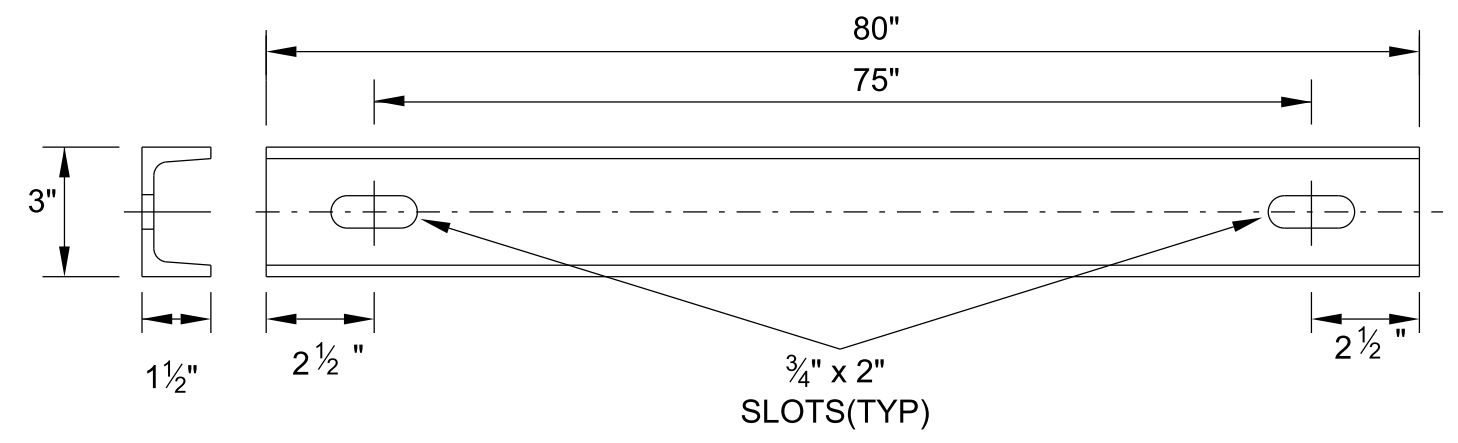
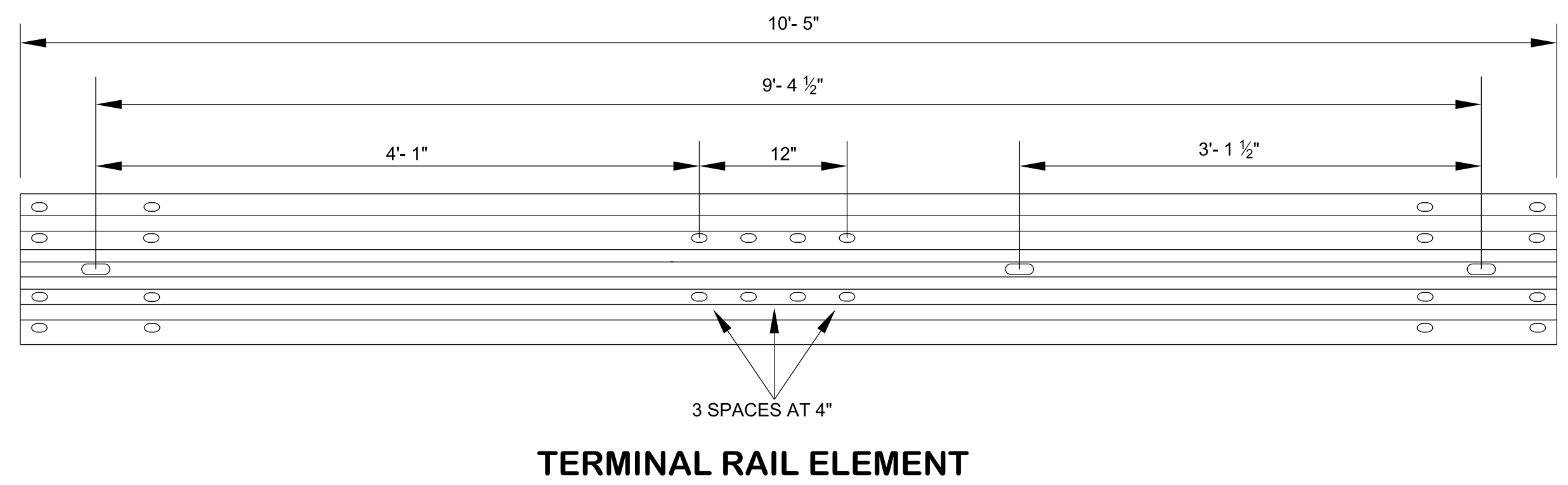
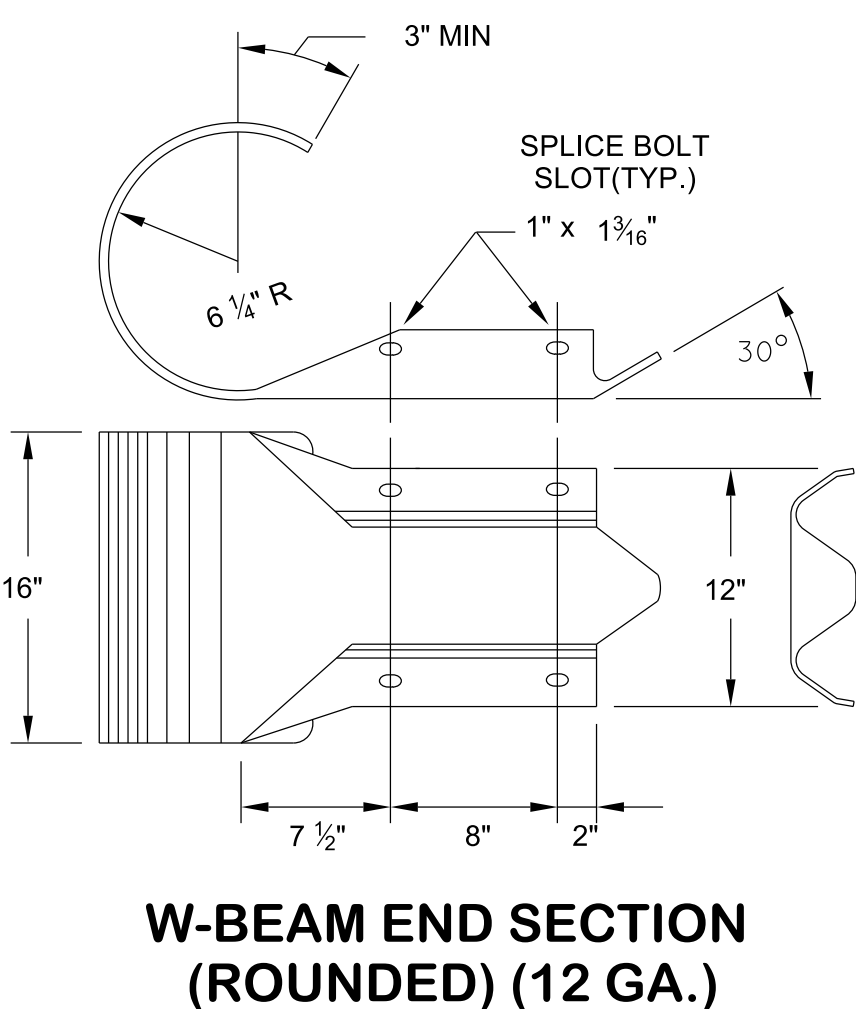
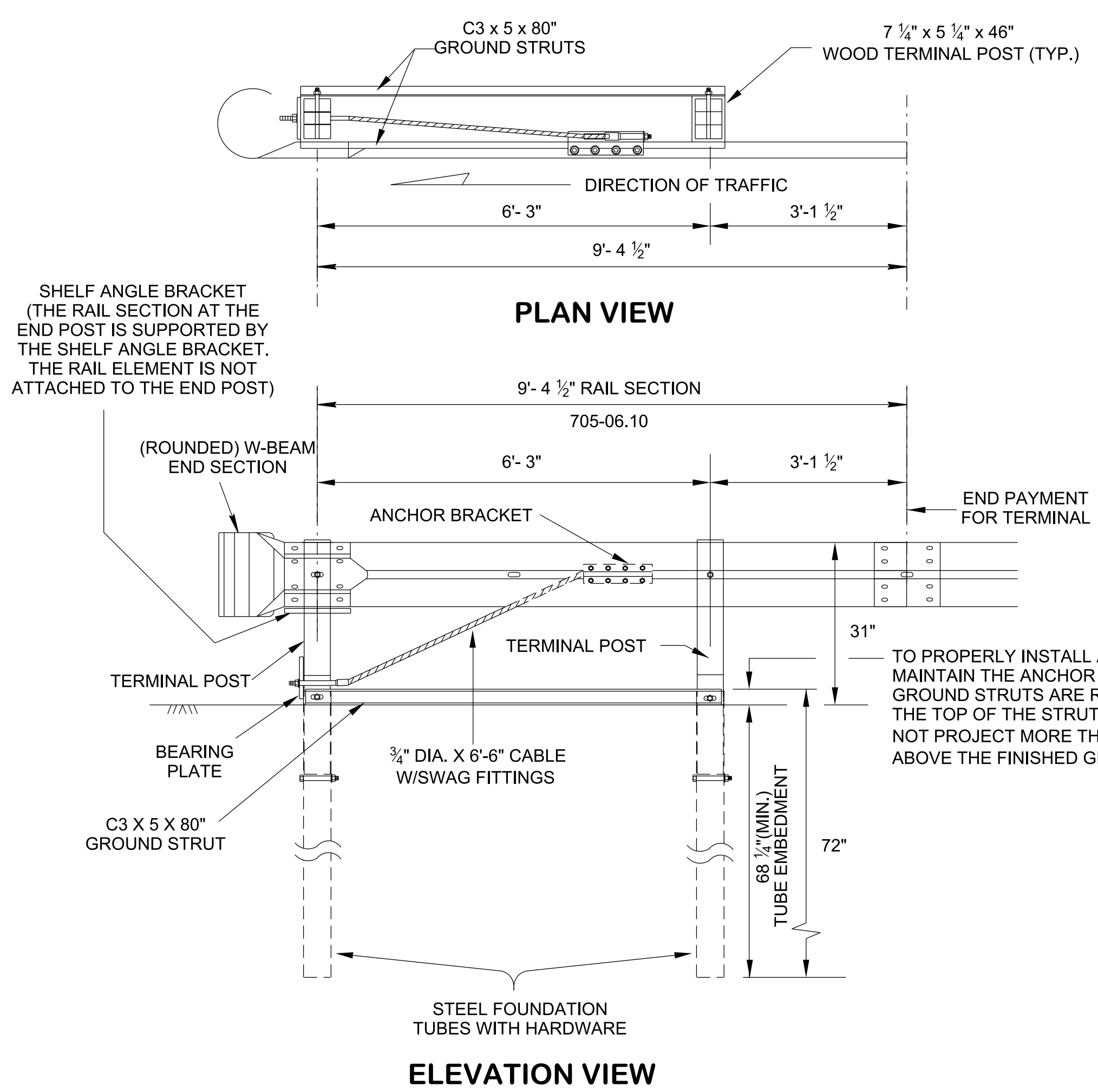


4/3/2024 10:37:59 AM P:\StandDraw\DESIGN STANDARDS\Standards Drawings Library\Standard Roadway Drawings - CURRENT\In Progress\10-107.00 Safety Design and Guardrails IP\107.08 Guardrail Anchors IP\SGRA3-20240109.dwg



GENERAL NOTES

(A) TYPE 13 GUARDRAIL ANCHOR SHALL ONLY BE INSTALLED AT TRAILING ENDS WHEN LOCATED OUTSIDE THE HORIZONTAL CLEARANCE AREA OF OPPOSING TRAFFIC. SEE S-CZ-1. THE RE-DIRECTIVE CAPACITY OF THE GUARDRAIL IS ONLY OFFERED AFTER THE THIRD GUARDRAIL POST.

(B) ALL HOLES IN WOOD POSTS ARE TO BE DRILLED BEFORE PRESERVATIVE TREATMENT IS APPLIED.

(C) ALL CUTTING, DRILLING, AND WELDING OF STEEL COMPONENTS SHALL BE DONE BEFORE GALVANIZING.

(D) THE FINISHED CABLE ASSEMBLY WILL NOT BE ACCEPTABLE UNLESS IT IS IN TENSION WITH NO SAG.

(E) OTHER ANCHOR CABLE ASSEMBLIES PROVIDING A MINIMUM BREAKING STRENGTH OF 40,000 POUNDS PER SQUARE INCH WILL BE ACCEPTABLE.

(F) TO BE PAID UNDER ITEM
 705-06.10 GR TERMINAL TRAILING END (TYPE 13) MASH TL3 PER EACH.

(G) ALL HARDWARE SHALL CONFORM TO ASTM A307 UNLESS OTHERWISE SHOWN.

(H) DESIGN BASED ON AASHTO MASH TL-3, TTI REPORT 9-1002-6.

- REV. 5-1-15: REVISED NO. 1 & 2 BREAK WAY POSTS WITH 5'-0" TUBE SLEEVE.
- REV. 5-27-16: REMOVED TYPE 21 AND IN-LINE FROM TITLE, UPDATED POST DETAIL, UPDATED STRUT DETAIL, ADDED RAIL DETAIL, AND UPDATED NOTES.
- REV. 3-28-17: CHANGED PAY ITEM NUMBER.
- REV. 7-5-17: REWORDED NOTE ON STRUT REQUIREMENTS IN THE DOWNSTREAM ANCHOR TERMINAL VIEW.
- REV. 06-28-2019: REDREW SHEET.
- REV. 06-15-2021: REVISED GENERAL NOTE (A).
- REV. 01-09-2024: CORRECTED THE STEEL BENT PLATE 1 1/2" OUTSIDE DIMENSION TO INSIDE DIMENSION, RENAMED THE ANCHOR BRACKET ASSEMBLY DETAILS.

MINOR REVISION -- FHWA APPROVAL NOT REQUIRED

STATE OF TENNESSEE
 STANDARD DRAWING
 DEPARTMENT OF TRANSPORTATION

TYPE 13
 GUARDRAIL ANCHOR