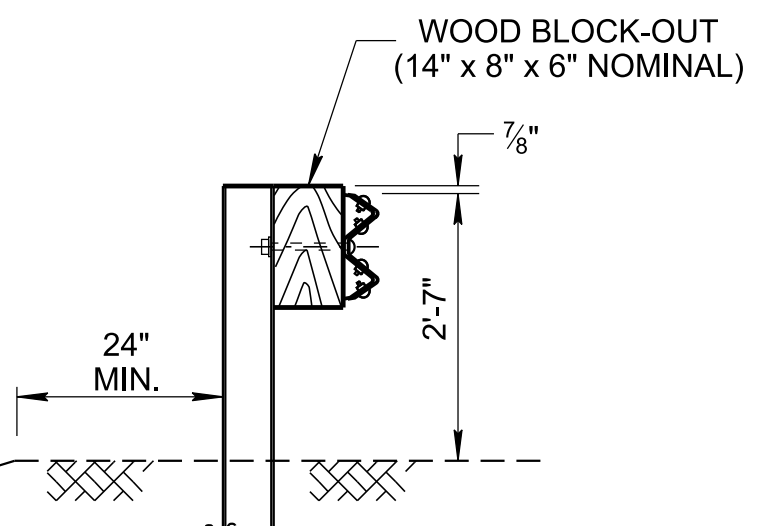
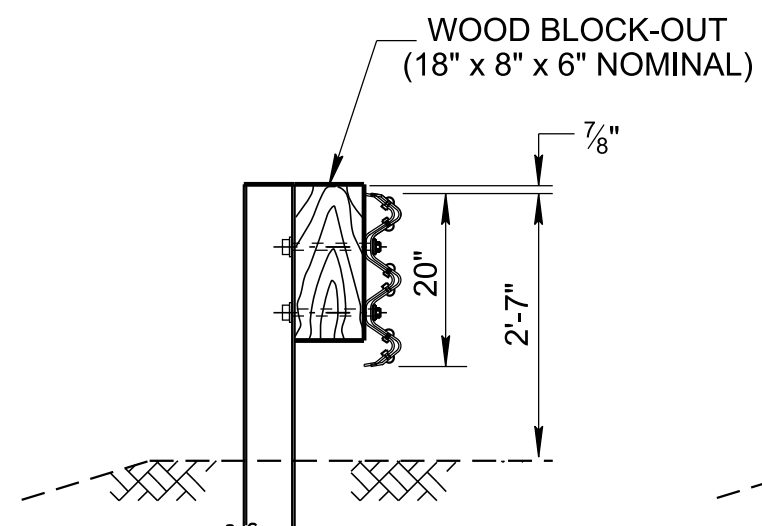
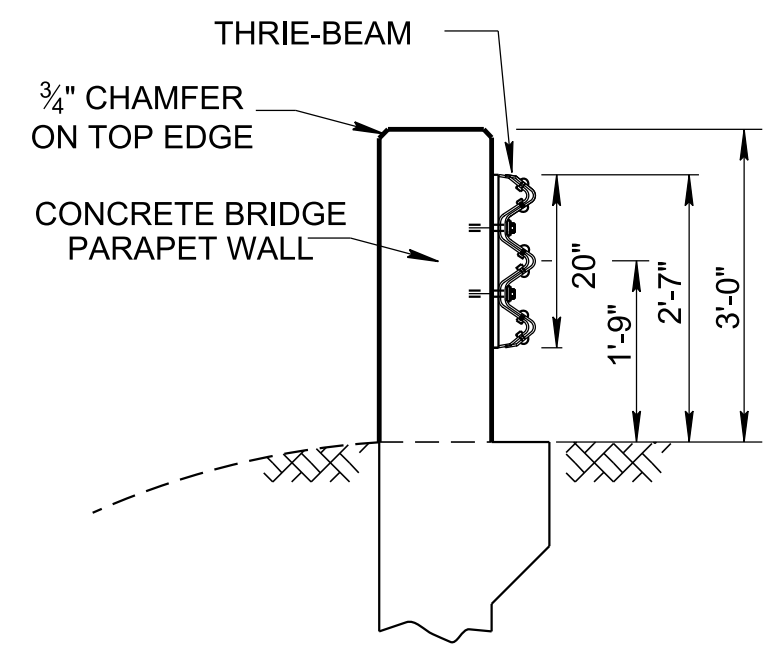


7/5/2023 2:25:51 PM P:\StandDraw\DESIGN STANDARDS\Standards Drawings\Standard Roadway Drawings - CURRENT\In Progress\10-106.00 Safety Design and Guardrails IP\106.05 Guardrail Connections IP\SGRC6-202307



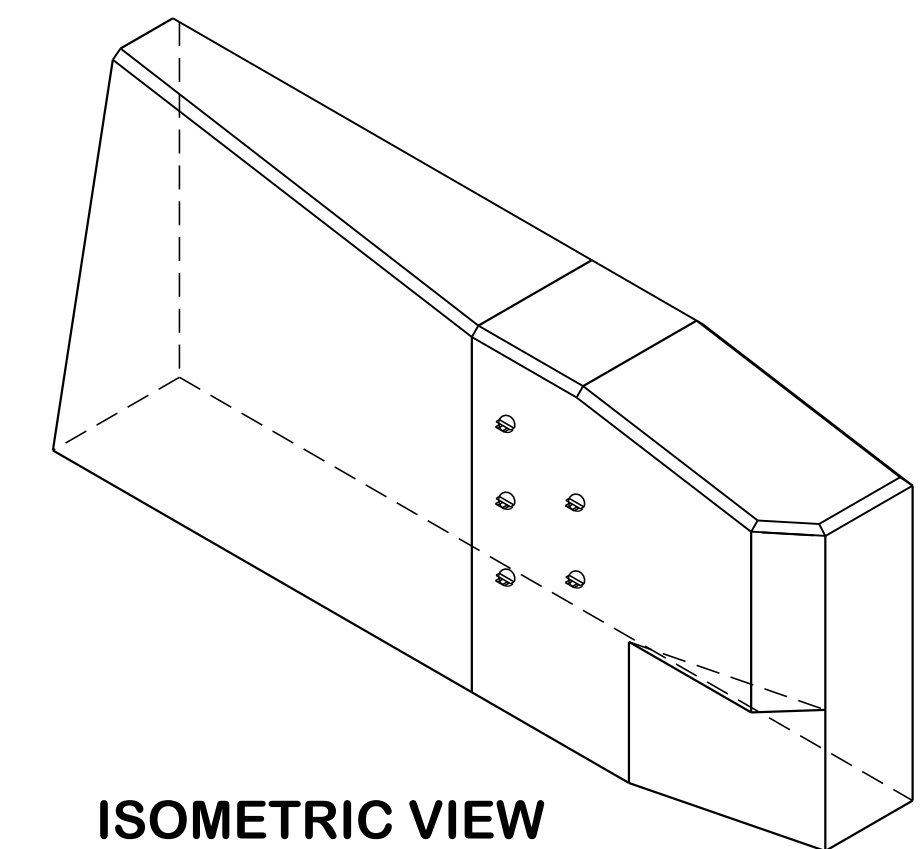
SECTION A-A

SECTION B-B

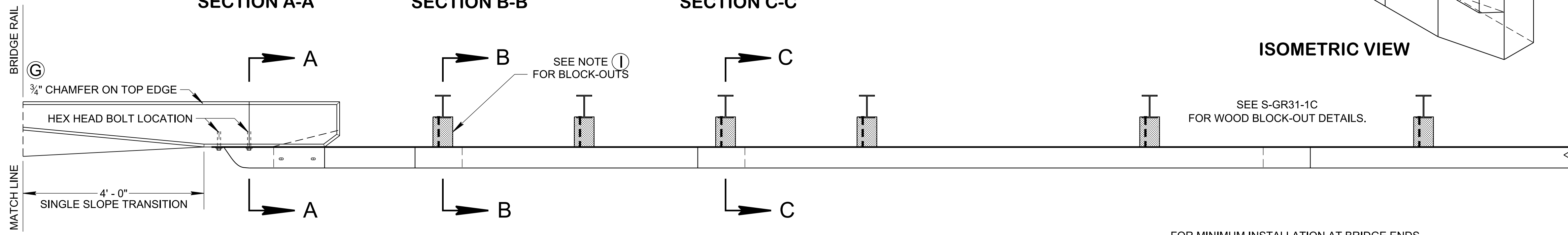
SECTION C-C

**LEGEND**

- ① 1/8" POST OFFSET TO BOLT HOLE (TYPICAL)
- ② FOR THE TRAILING SIDE OF THE ROADWAY, DUE TO POST BEING REVERSED, BOLT HOLE WILL OFFSET 2 1/4".

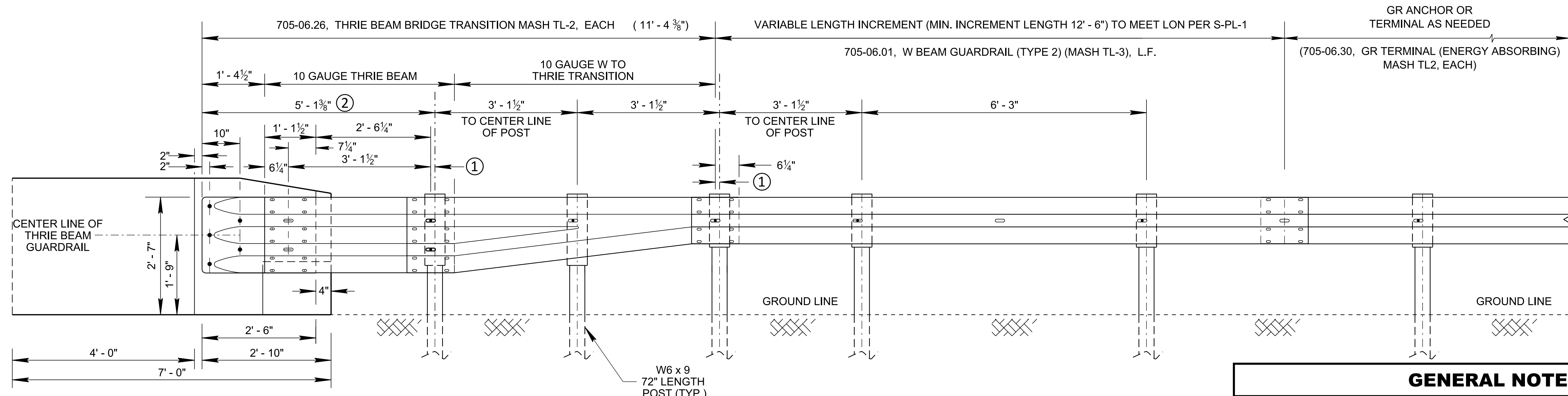


ISOMETRIC VIEW

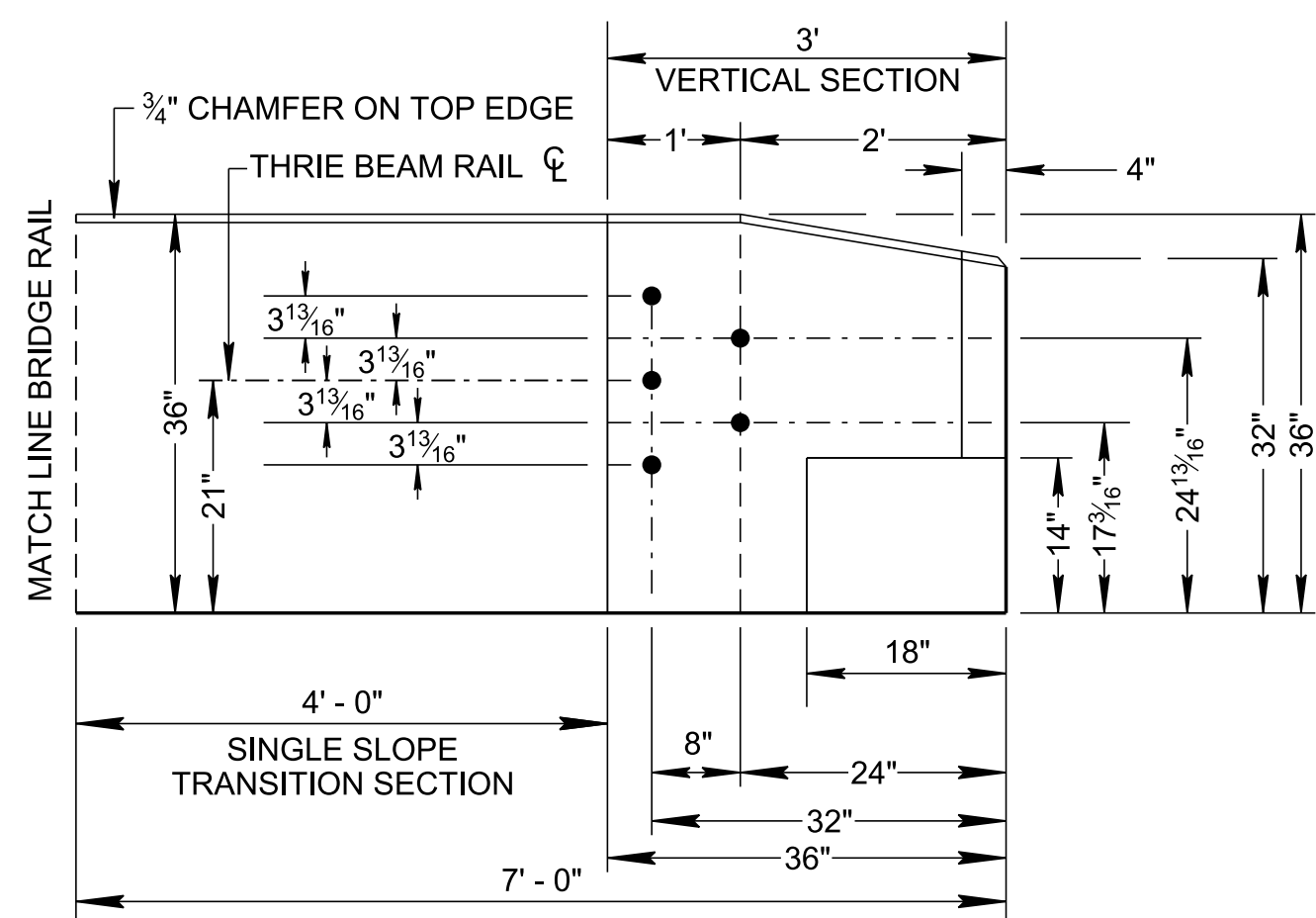


PLAN VIEW

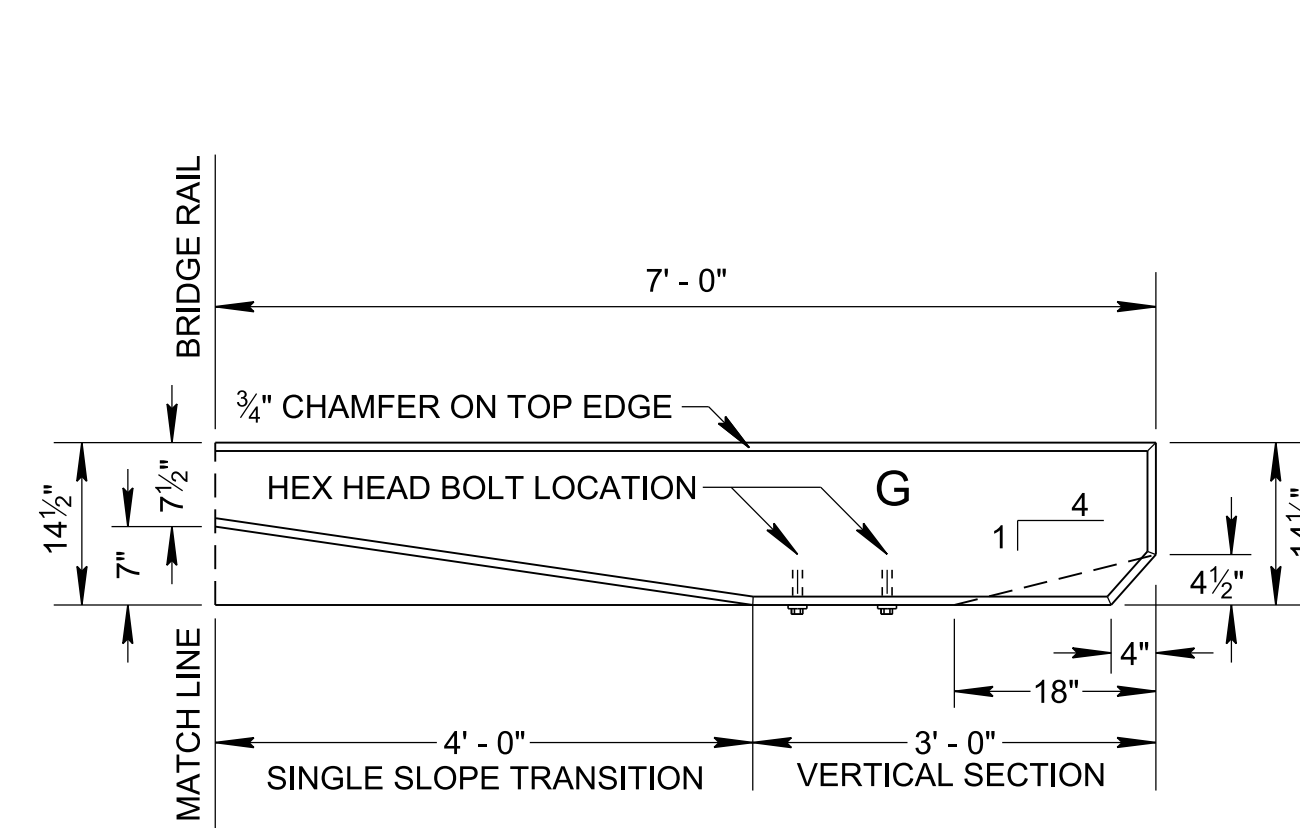
FOR MINIMUM INSTALLATION AT BRIDGE ENDS  
SEE S-PL-3 FOR DETAILS



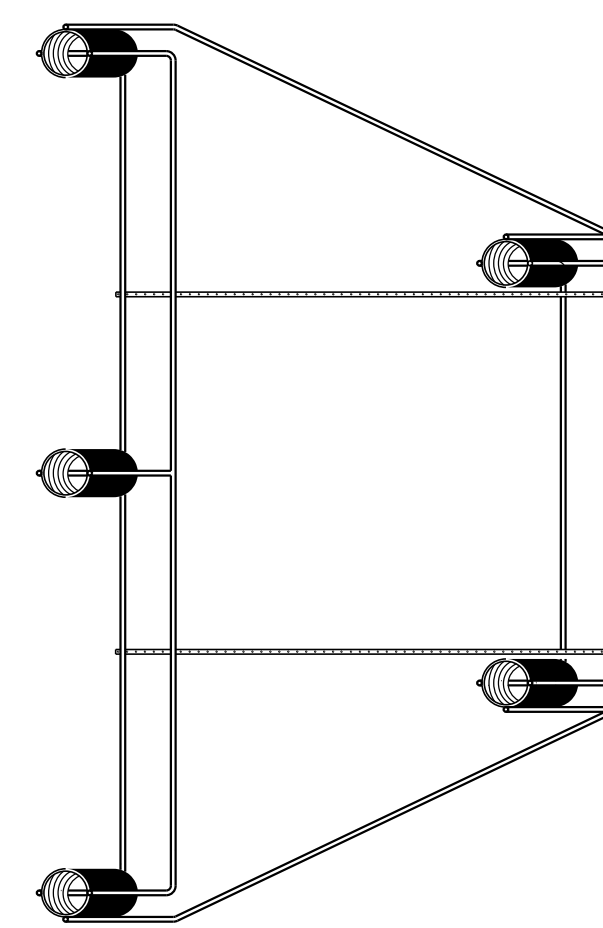
ELEVATION VIEW



WALL ELEVATION VIEW



PLAN VIEW

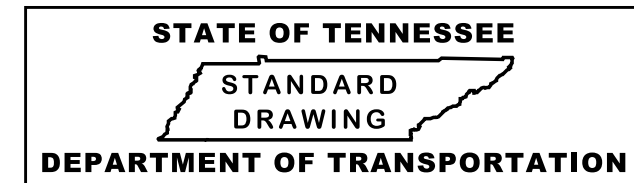


INSERT ASSEMBLY

CAST IN PLACE THREADED STEEL INSERT WITH 7/8" x 2" HEX HEAD GALVANIZED BOLTS (A307) HOT DIP ZINC COATING ASTM A153

**GENERAL NOTES**

- (A) THIS DRAWING IS TO BE USED AT ALL GUARDRAIL LEADING AND TRAILING TRANSITIONS TO BRIDGE RAIL FOR LOWER SPEED ROADWAYS WITH DESIGN SPEED 45 M.P.H. OR LESS (IF DETERMINED TO BE WITHIN THE CLEAR ZONE).
- (B) CONNECTION TO BRIDGE RAIL SHOWN; FOR CONNECTION TO CONCRETE MEDIAN BARRIER WALLS, SEE S-SSMB-6.
- (C) SEE STANDARD DRAWINGS STD-1 SERIES FOR BRIDGE RAILING DETAILS, S-GR31-1 SERIES FOR ALL OTHER GUARDRAIL DETAILS AND MATERIAL PROPERTIES NOT SHOWN AND S-PL-3 FOR MINIMUM LENGTH AND DELINEATOR REQUIREMENTS.
- (D) INSTALLATION OF GUARDRAIL CONNECTOR TO THE BRIDGE RAIL SHALL BE INCLUDED UNDER ITEM 705-06.26, THRIE BEAM BRIDGE TRANSITION MASH TL-2, PER EACH. COMPONENTS INCLUDE BUT NOT LIMITED TO, THRIE BEAM TERMINAL CONNECTION, THRIE BEAM RAIL, THRIE BEAM TRANSITION PANEL, ALL COMPONENTS REQUIRED FOR ATTACHMENT OF THE THRIE BEAM RAILS TO THE BRIDGE RAIL AND POSTS.
- (E) BUTTON HEAD "POST" BOLTS (ASTM A307) SHALL BE OF SUFFICIENT LENGTH TO EXTEND THROUGH THE FULL THICKNESS OF THE NUT (ASTM A563) AND WASHER AND NOT MORE THAN 1" BEYOND IT. BUTTON HEAD "SPlice" BOLTS (ASTM 307) 5/8" DIA. X 2" (AT TRIPLE RAIL SPLICES) WITH 5/8" DOUBLE RECESSED NUTS.
- (F) GALVANIZED WASHERS USED WITH THE 5/8" DIA. POST BOLTS SHALL BE TYPE A 1-3/4" O. D. WASHERS.
- (G) USE INSERT ASSEMBLY TO CONNECT THE THRIE BEAM GUARDRAIL TO THE BRIDGE RAIL USING 5 HEX HEAD BOLTS AT 7/8" Ø X 2" AND WASHERS.
- (H) SAFETY PERFORMANCE OF THIS DEVICE HAS BEEN EVALUATED PER TRB 2672(39) 41-51 DEVELOPMENT OF A STANDARDIZED BUTTRESS FOR APPROACH GUARDRAIL TRANSITIONS AND TTI REPORT 9-1002-8, FOR MASH TL-2.
- (I) WHEN BRIDGE END DRAIN FLUME IS REQUIRED, USE 12 INCH DEEP BLOCK-OUTS SEE STANDARD DRAWINGS D-FLU-2 AND D-FLU-2A FOR DETAILS.



**GUARDRAIL CONNECTION TO BRIDGE ENDS FOR LOW SPEED ROADWAYS**

REV. 10-16-20: RELOCATED SECTION C-C AND ADDED BLOCK-OUT NOTES ON PLAN VIEW. ADDED POST NUMBERS. ADJUSTED THE NUMBER OF POSTS ON ELEVATION VIEW. REVISED GENERAL NOTES (A), (F) AND (G).  
REV. 06-15-21: REVISED PLAN AND ELEVATION VIEWS AND GENERAL NOTE (D). REVISED LEGEND NOTE 2.  
REV. 07-07-23: GENERAL NOTE (I) WAS ADDED.