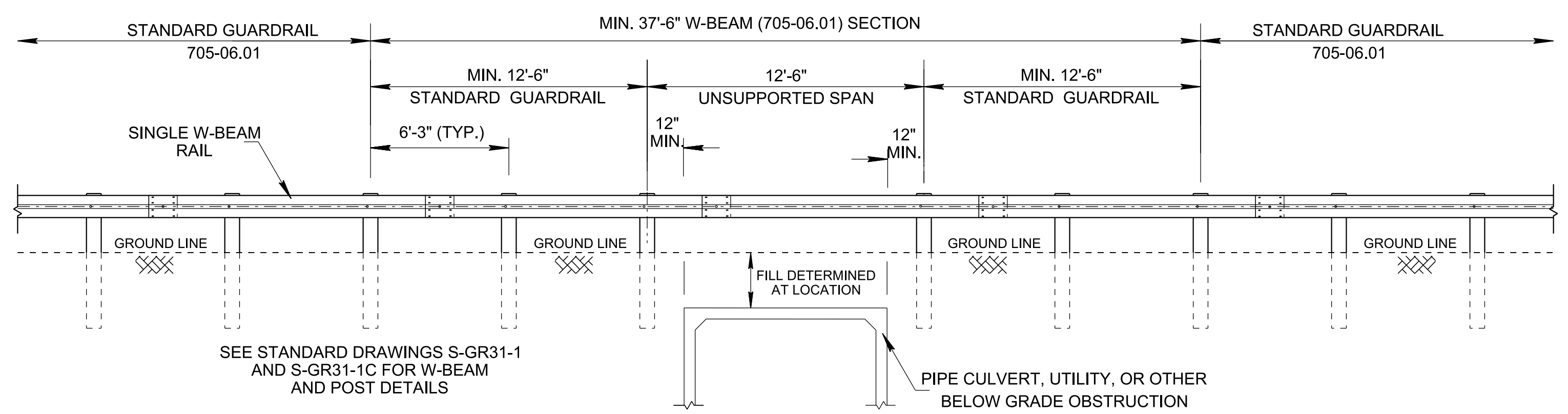
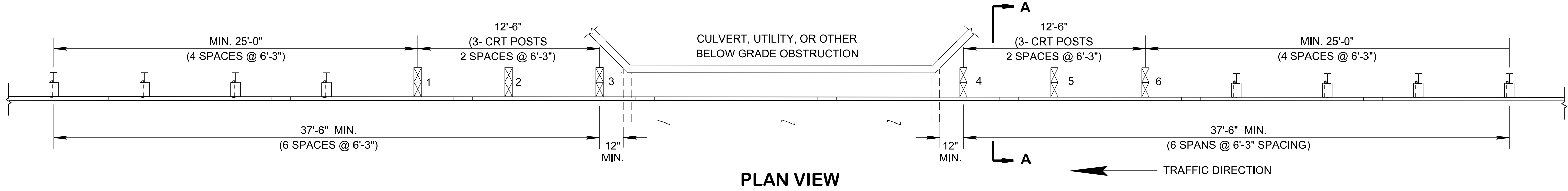


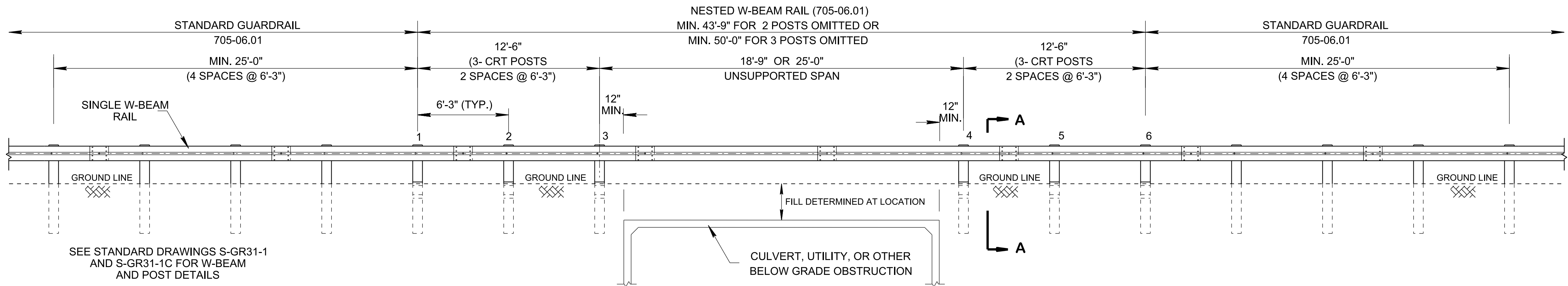
7/16/2021 2:02:51 PM P:\StandDraw\DESIGN STANDARDS\Standards Library\Standard Roadway Drawings - CURRENT\In Progress\10-106.00 Safety Design and Guardrails IP\106.06 Guardrail (Special Cases) IP\SGRS-1-202



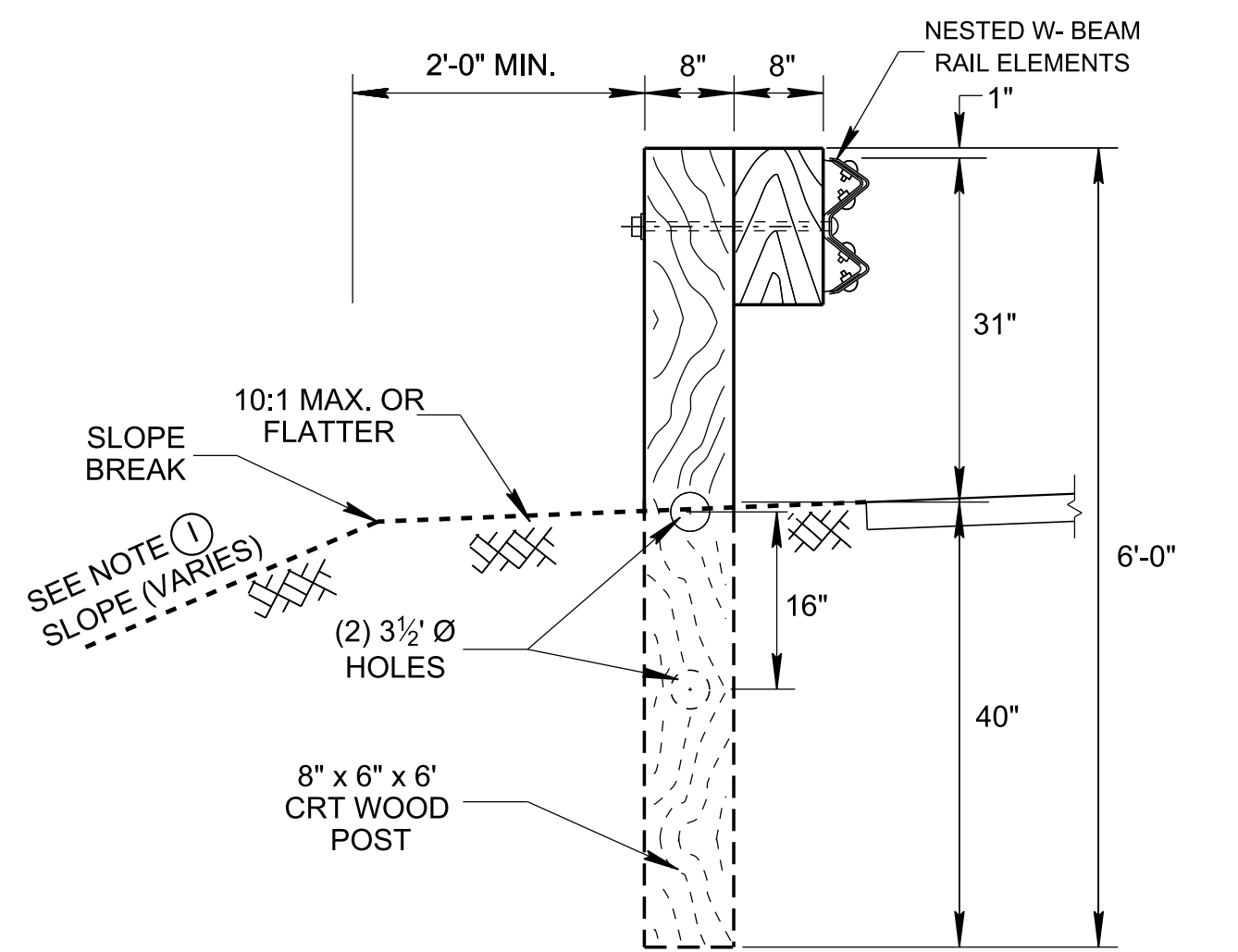
ELEVATION VIEW
W-BEAM RAIL AT 1 OMITTED POST



PLAN VIEW



ELEVATION VIEW
NESTED W-BEAM RAIL AT 2 OR 3 OMITTED POSTS



SECTION A-A
TYPICAL SECTION AT CRT POST (1 THRU 6)

GENERAL NOTES	
<p>(A) DRAWING IS TO BE USED FOR GUARDRAIL PLACEMENT WHEN ENCOUNTERING AN OBSTRUCTION WHICH WILL PREVENT GUARDRAIL POSTS TO BE INSTALLED PROPERLY.</p> <p>(B) POSTS MAY BE OMITTED ON A RUN OF GUARDRAIL ONLY. THIS APPLICATION IS NOT TO BE USED AS PART OF AN END TERMINAL. IF AN OBSTRUCTION IS ENCOUNTERED AT A TERMINAL LOCATION, THE GUARDRAIL RUN IS TO BE EXTENDED TO A POINT WHERE THE TERMINAL MAY BE INSTALLED PROPERLY.</p> <p>(C) ONLY ONE, TWO OR THREE POSTS MAY BE OMITTED AT AN OBSTRUCTION.</p> <p>(D) WHEN MORE THAN ONE OBSTRUCTION IS ENCOUNTERED ON A RUN OF GUARDRAIL, THREE CONSECUTIVE CRT POSTS ADJACENT TO EACH END OF THE UNSUPPORTED SPAN SHALL BE INSTALLED.</p> <p>(E) SEE STANDARD DRAWINGS RD11-TS-SERIES FOR SLOPE CRITERIA, S-GRT31 SERIES FOR GUARDRAIL DETAILS AND S-PL-6 FOR GUARDRAIL PLACEMENT DETAILS.</p> <p>(F) IF ANY OF THE CONDITIONS NOTED IN GENERAL NOTES A, C, OR D CANNOT BE MET, THAN USE THE GUARDRAIL WITH FOOTING OPTION AS SHOWN ON STANDARD DRAWINGS S-GRS-3 OR S-GRS-5 SERIES.</p>	<p>(G) THE NESTED SECTION WILL BE BUILT AS SHOWN BUT PAYMENT WILL BE MEASURED FOR A LENGTH OF 3 POSTS ON EITHER SIDE OF THE OMITTED POST.</p> <p>(H) MIDWEST GUARDRAIL SYSTEM (MGS) LONG SPAN SYSTEM HAS BEEN EVALUATED BY THE MIDWEST ROADSIDE SAFETY FACILITY AND MEET MASH TL-3 STANDARDS. THE EVALUATION HAS BEEN DOCUMENTED IN MIDWEST STATES POOLED FUND PROGRAM RESEARCH REPORT NUMBER TRP-03-326-16.</p> <p>(I) THE MINIMUM LENGTH OF TANGENT MGS W-BEAM GUARDRAIL WHICH SHALL BE INSTALLED FROM THE OUTERMOST CRT POST IS: 25'-0" TO THE BEGINNING OF ANY FLARED GUARDRAIL SECTION, 50'-0" FROM END GUARDRAIL ANCHORAGE/TERMINAL, 28'-1½" FROM W-BEAM TO THRIE BEAM TRANSITION AND 37'-6" BETWEEN UNSUPPORTED SPAN (OMITTED POSTS) THESE ITEMS ARE PAID FOR SEPARATE FROM THE MGS LONG SPAN GUARDRAIL.</p> <p>(J) PAYMENT FOR FURNISHING AND INSTALLING LONG SPAN GUARDRAIL INCLUDING ALL MATERIAL AND LABOR FOR CONSTRUCTION WILL BE MADE UNDER PAY ITEM NUMBER: 705-06.01, W-BEAM GUARDRAIL (TYPE 2) MASH TL-3 PER L.F.</p>

- REV. 1-29-16: CORRECTED PAY ITEM NUMBER.
- REV. 3-28-17: CLARIFIED "RD01-SERIES" TO "RD01-TS-SERIES IN GENERAL NOTE (E). ADDED NOTE (H). CHANGED ITEM NUMBER IN ELEVATION VIEW.
- REV. 06-28-19: REVISED GENERAL NOTE (E) TO RD11-TS-SERIES. REDREW SHEET.
- REV. 06-15-21: REVISED THE DESCRIPTION OF THE STANDARD DRAWING, ONE OMITTED POST DRAWING AND THE SECTION. ADDED DRAWINGS FOR 2 OR 3 OMITTED POSTS. REVISED GENERAL NOTES (C), (D), (E), (F) AND (H). ADDED GENERAL NOTES (I) AND (J).

■ MINOR REVISION -- FHWA APPROVAL NOT REQUIRED

STATE OF TENNESSEE
STANDARD DRAWING
DEPARTMENT OF TRANSPORTATION

SPECIAL CASE
LONG SPAN
GUARDRAIL
1 POST, 2 OR 3 POSTS
OMITTED