

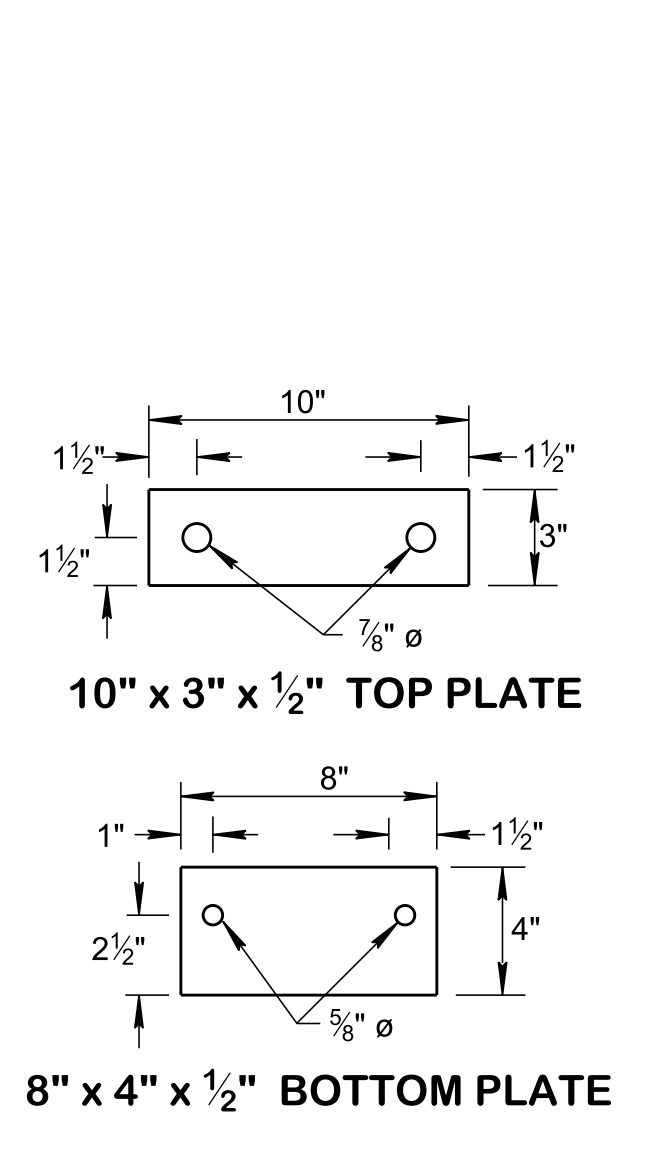
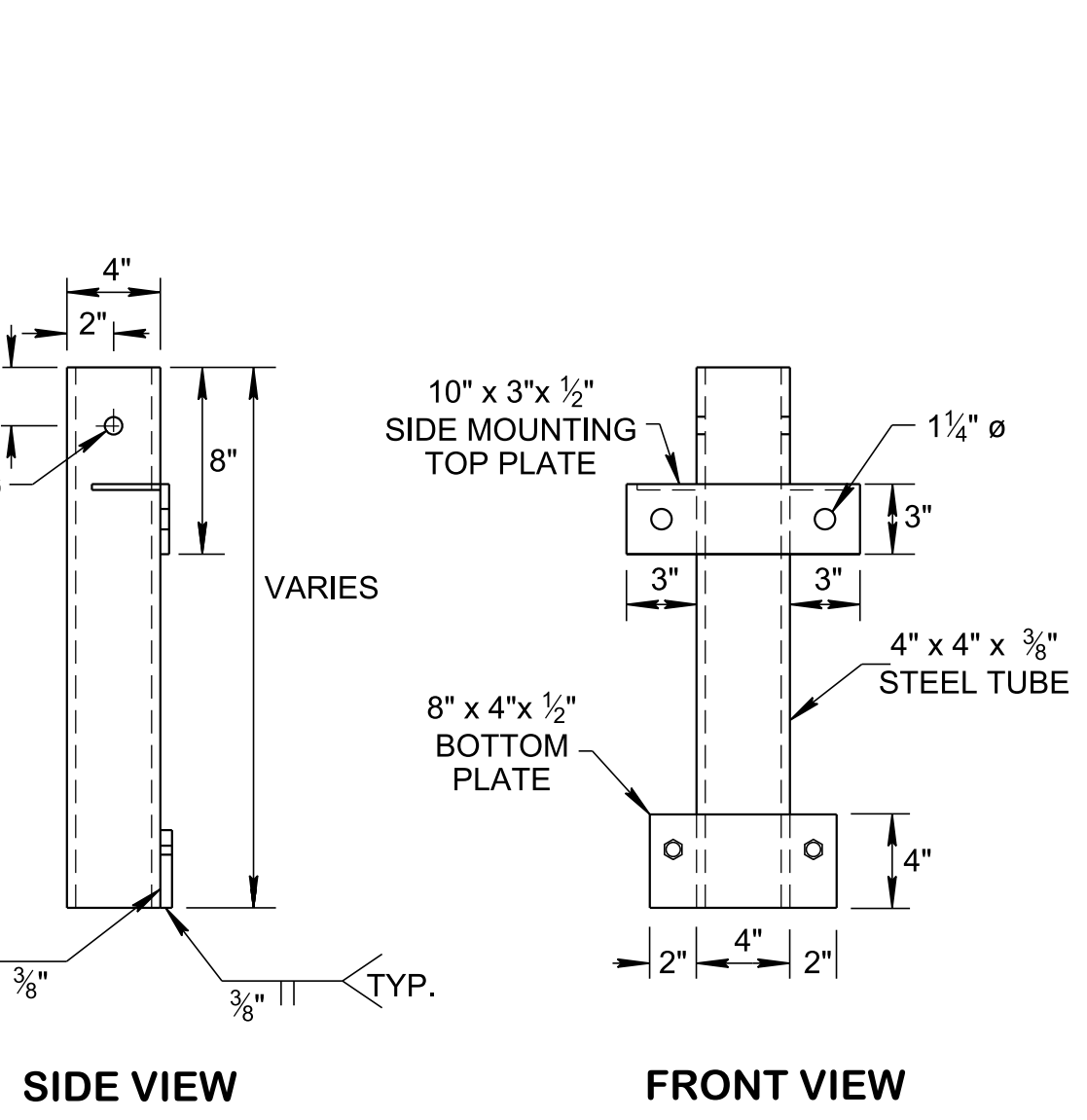
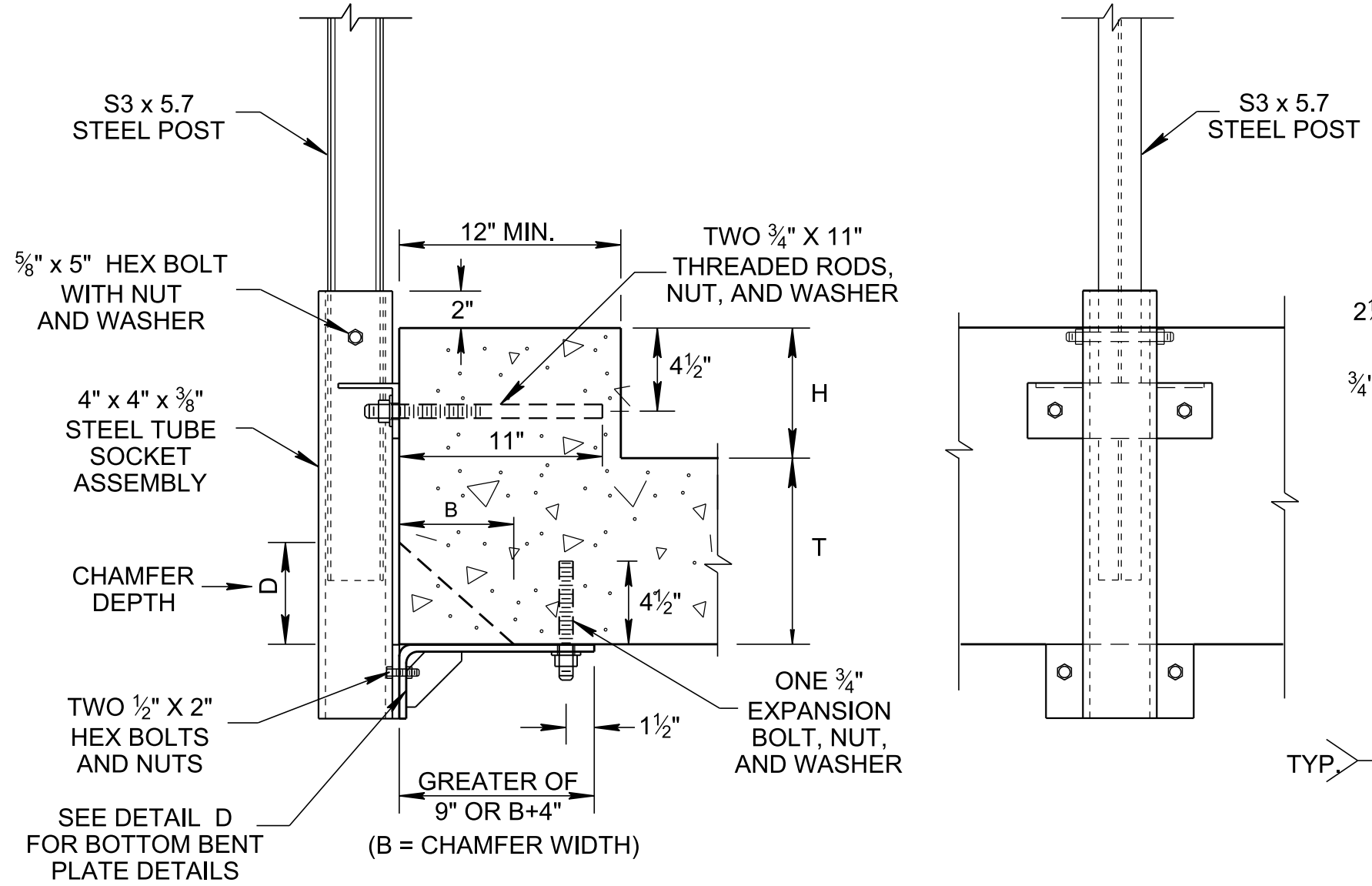
CROSS SECTION ELEVATION

SOCKET ASSEMBLY VIEWS

TOP PLATE VIEW

**TOP AND BOTTOM MOUNT- SINGLE ANCHOR- TYPE 1 FOR SLAB THICKNESS < 18" SLAB USED AS A RIDING SURFACE (8" SLAB IS SHOWN)**

NOTE: HARDWARE DIMENSIONS NEED ADJUSTMENT FOR SLABS THICKER THAN 8".

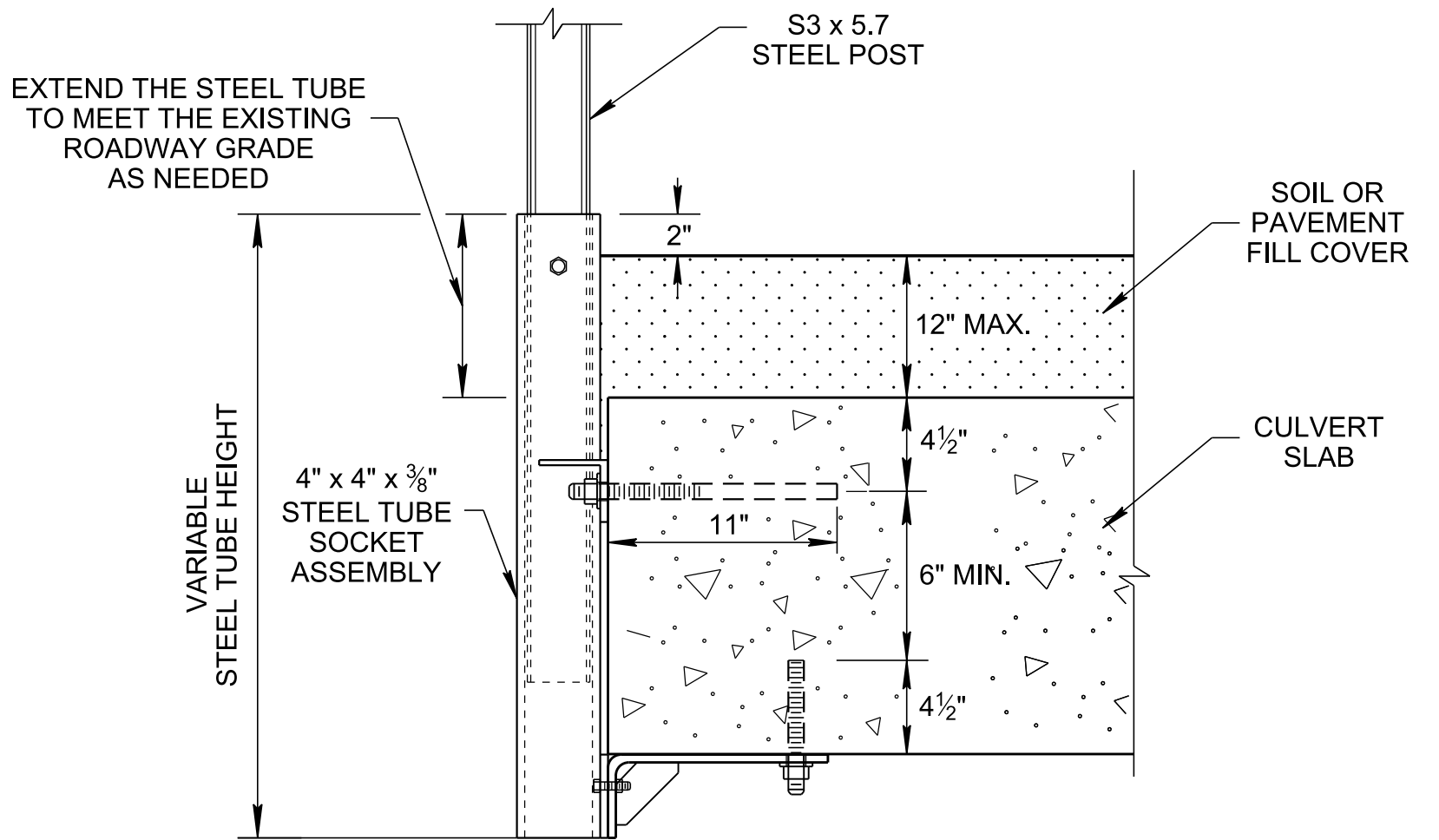


CROSS SECTION ELEVATION

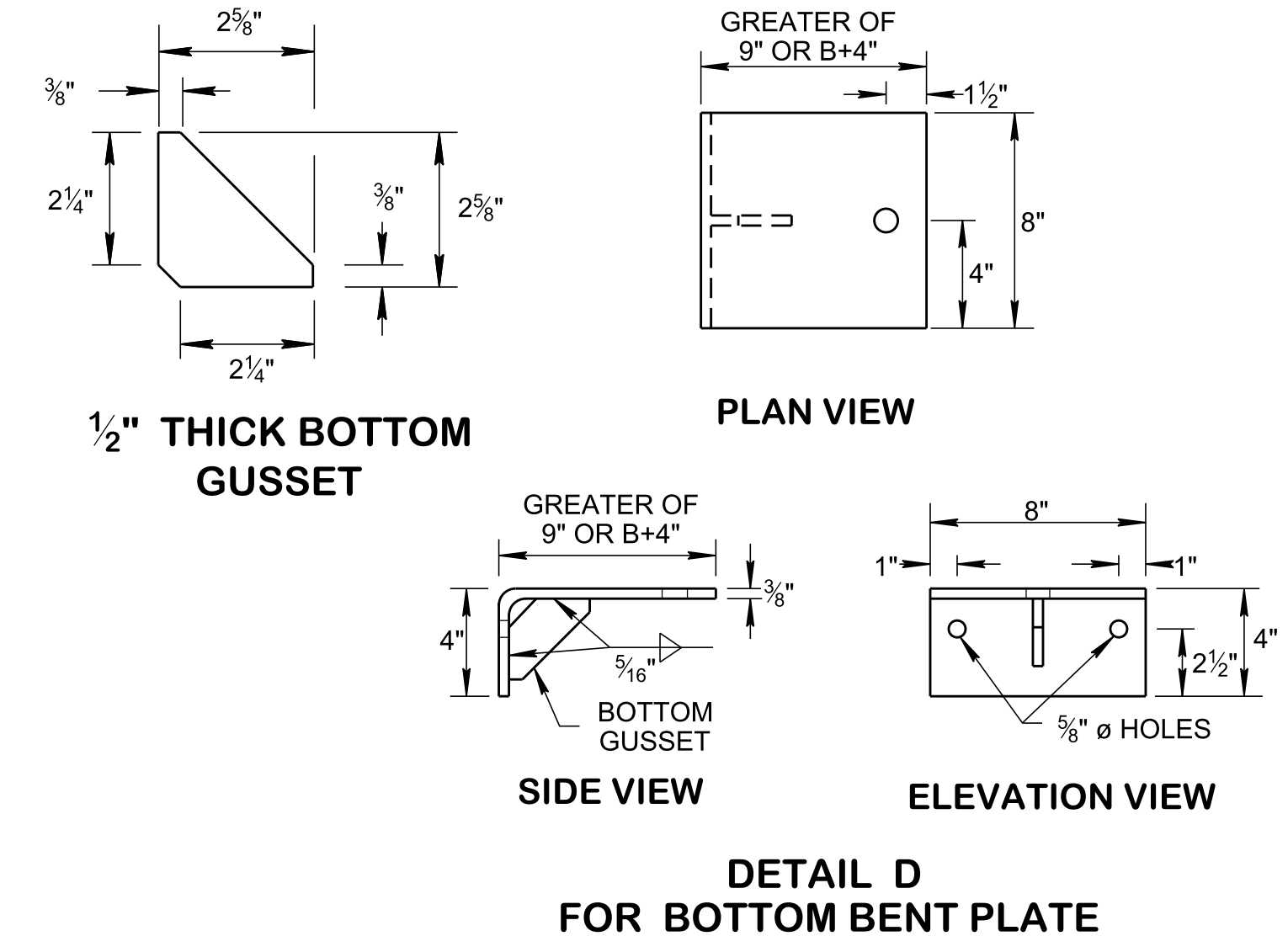
SOCKET ASSEMBLY VIEWS

10" x 3" x 1/2" TOP PLATE 8" x 4" x 1/2" BOTTOM PLATE

**SIDE AND BOTTOM MOUNT - TYPE 2 FOR (H + T - D) < 18"**



ALT. DETAIL FOR SIDE AND BOTTOM MOUNT WITH ROADWAY FILL COVER



1/2" THICK BOTTOM GUSSET

PLAN VIEW

SIDE VIEW

ELEVATION VIEW

DETAIL D FOR BOTTOM BENT PLATE

**GENERAL NOTES**

- (A) INSTALL THREADED ROD USING EPOXY ADHESIVE MATERIAL FROM QUALIFIED PRODUCT LIST.
- (B) ALL THREADED RODS AND BOLTS SHALL BE INSTALLED WITH HEAVY HEX NUTS AND STANDARD WASHERS AND SHALL BE GALVANIZED. THREADED ROAD SHALL BE CONFORM TO ASTM A307/ ASTM F1554 GRADE 36, HEAVY HEX NUTS SHALL BE ASTM A563A AND 5/8" HEAVY HEX BOLT SHALL BE ASTM A325.
- (C) THE SQUARE TUBE SHALL BE ASTM A500 GRADE B GALVANIZED STEEL.
- (D) THE TOP AND BOTTOM MOUNTED PLATES AND GUSSET PLATE SHALL BE ASTM A572 GRADE 50 GALVANIZED STEEL. ALL MOUNTING ASSEMBLY SHALL BE GALVANIZED AFTER WELDING.
- (E) ALL WELDING SHALL BE PERFORMED BY A WELDER QUALIFIED IN ACCORDANCE WITH THE AASHTO/AWS D1.5M/D1.5 BRIDGE WELDING CODE (LATEST EDITION).
- PAYMENT
- (F) PAYMENT FOR ASSEMBLY ELEMENTS SUCH AS SQUARE TUBE, HARDWARE INCLUDING DRILLING AND INSTALLING THREADED RODS, NUTS AND BOLTS, WASHERS AND ALL PLATES WILL BE INCLUDED IN THE WEAK-POST GUARDRAIL ITEM NUMBER.