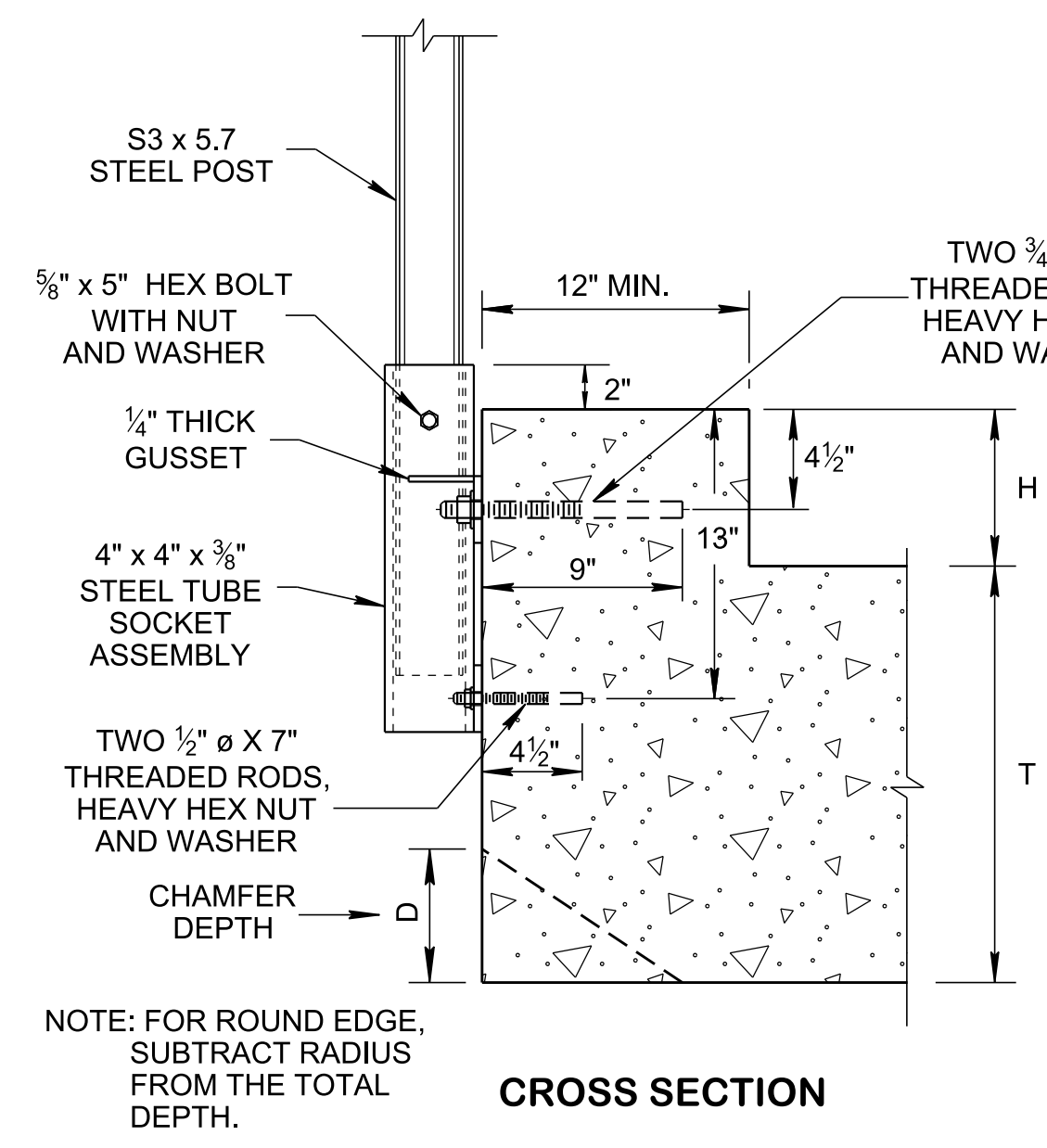
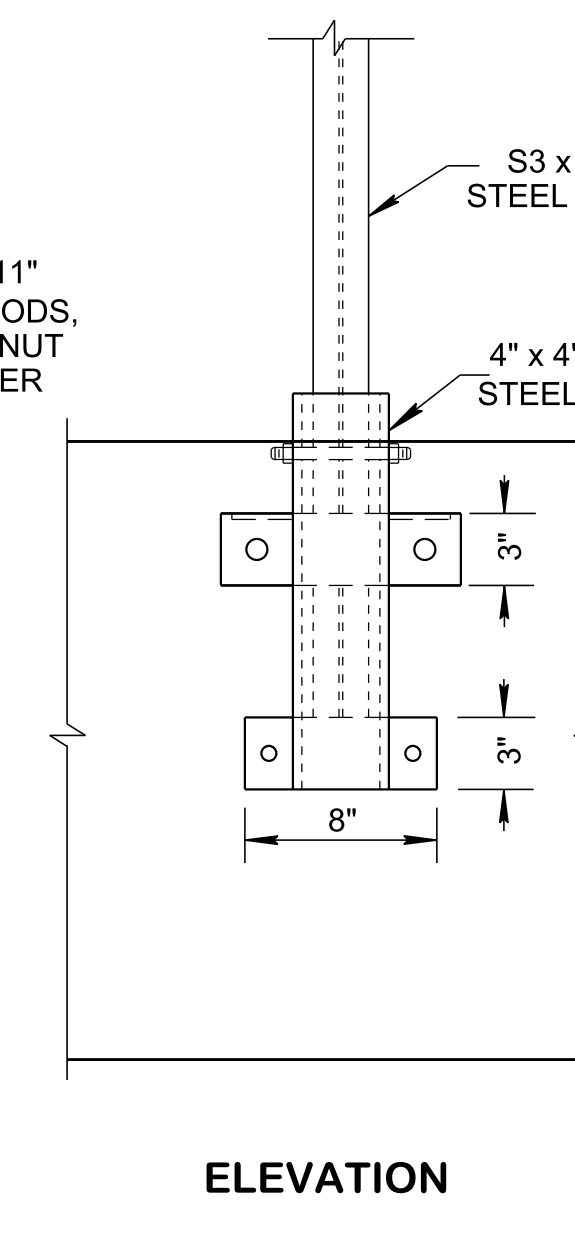


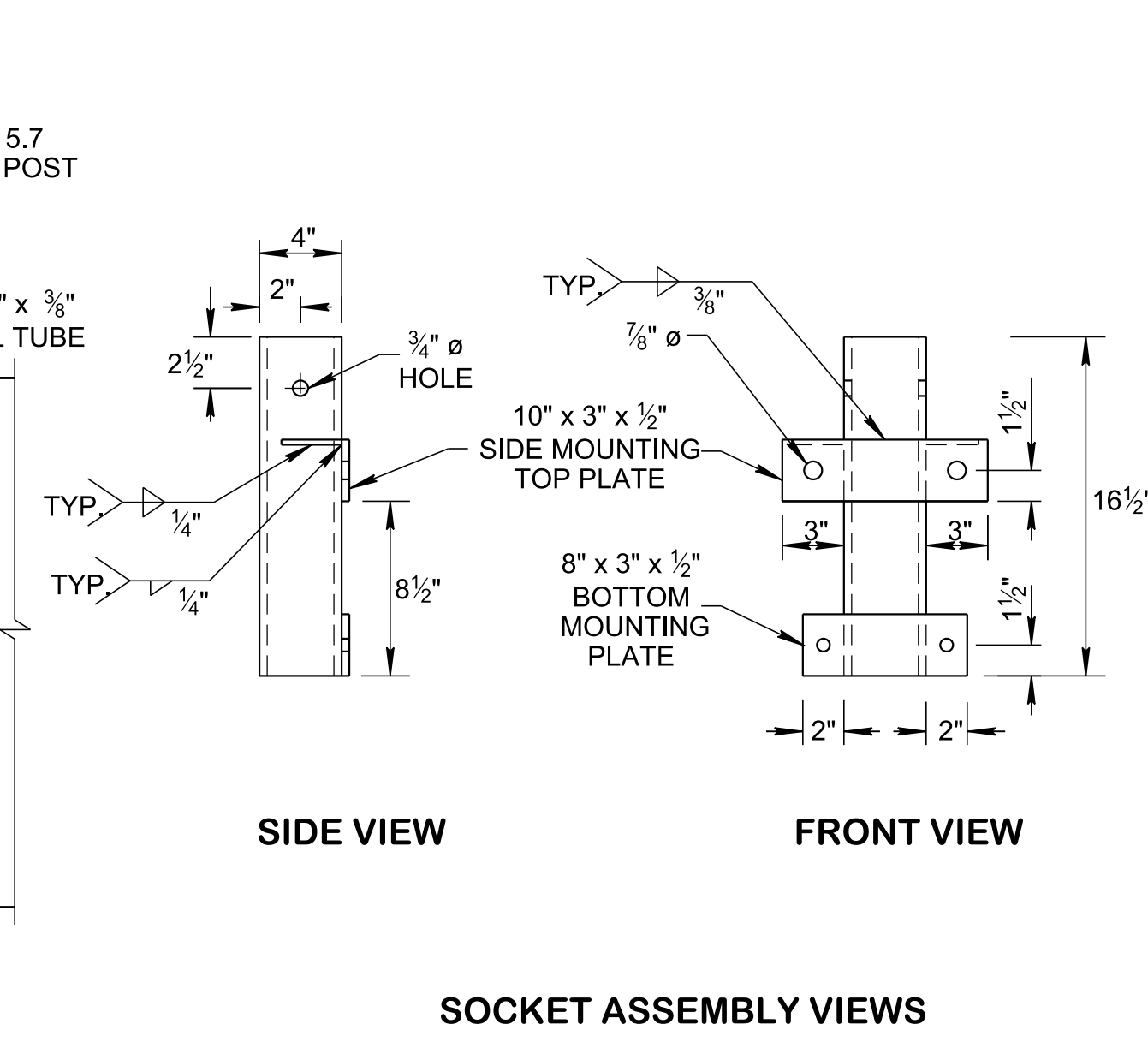
10/16/2020 11:34:41 AM
 P:\StandDraw\DESIGN STANDARDS\Standards Drawings Library\Standard Roadway Drawings - CURRENT\In Progress\10-106.00 Safety Design and Guardrails IPY106.06 Guardrail (Special Cases) IPISGRS5B-20



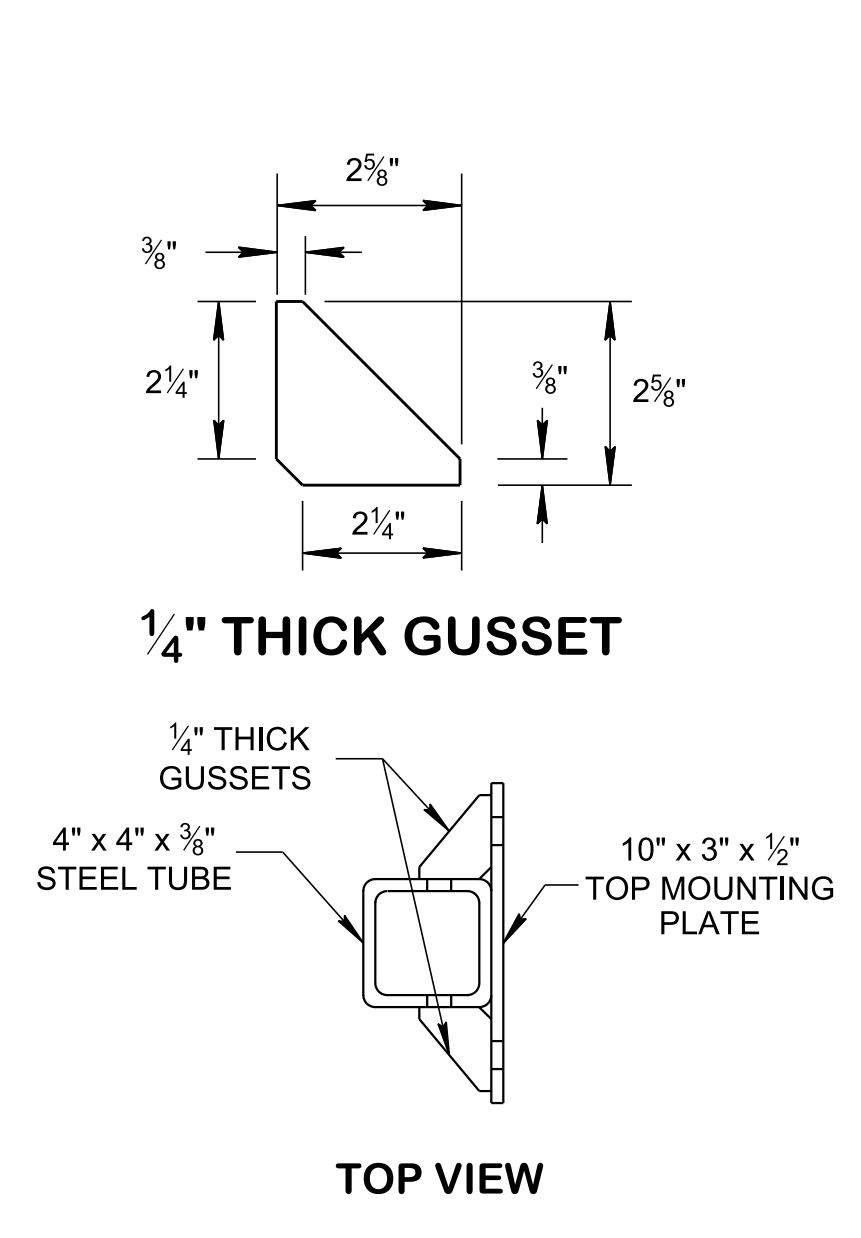
CROSS SECTION



ELEVATION

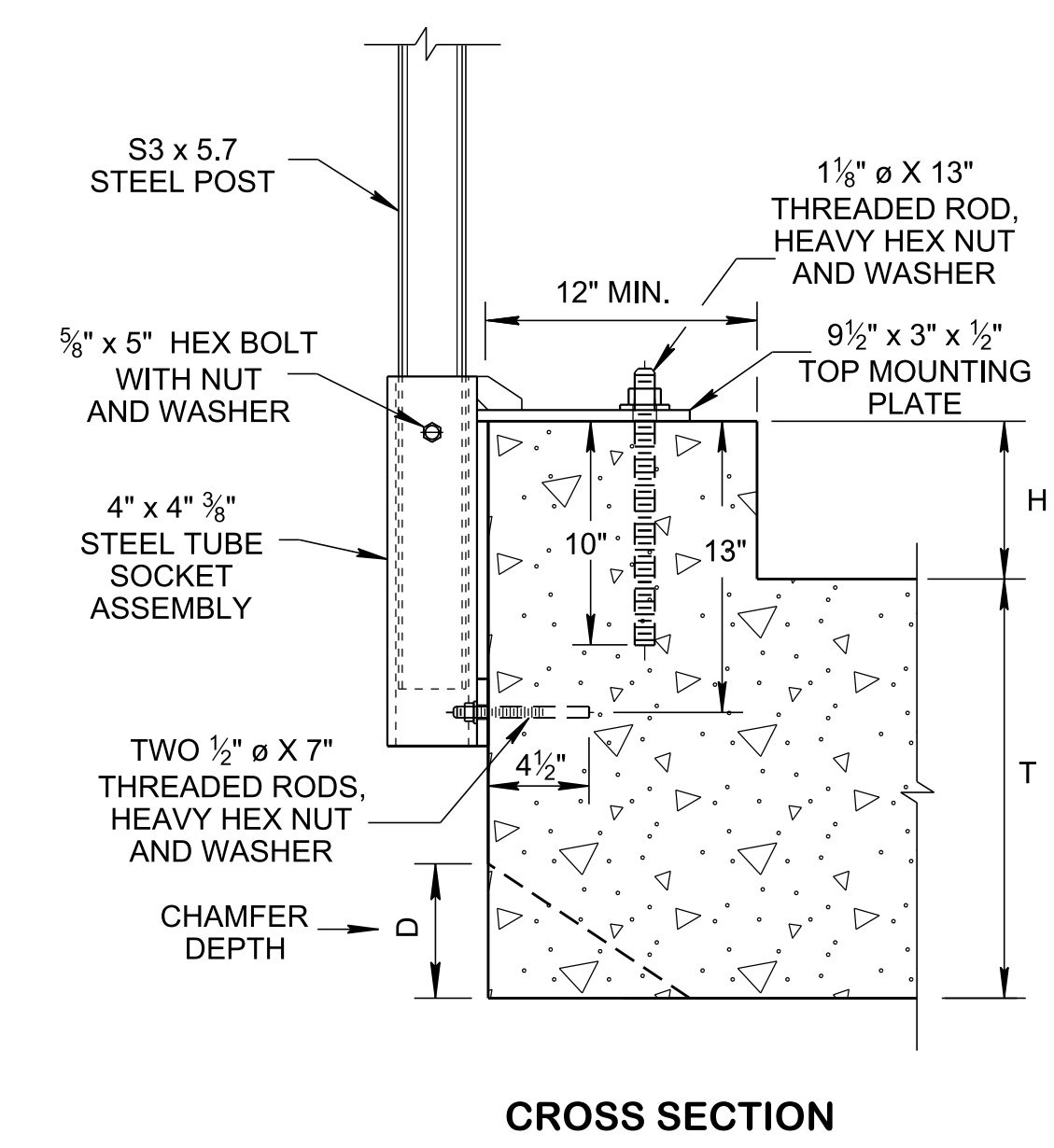


SOCKET ASSEMBLY VIEWS

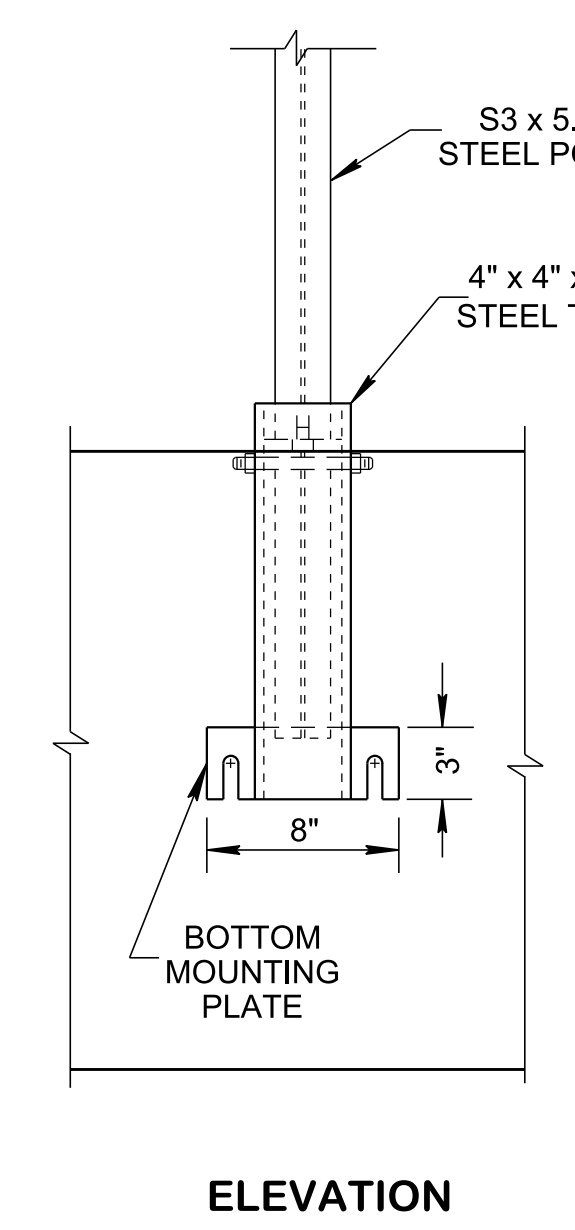


TOP VIEW

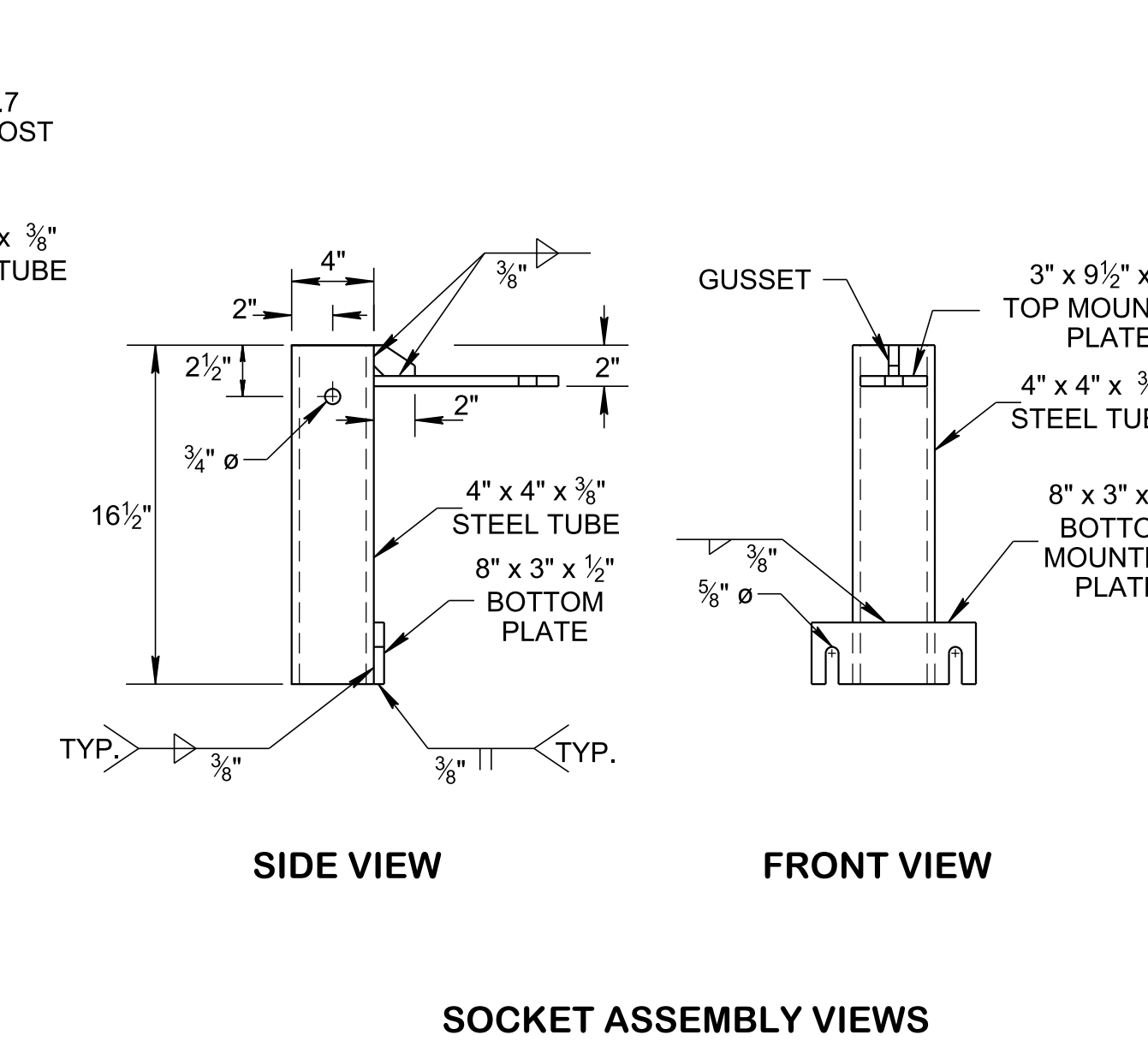
**SIDE MOUNT - TYPE 3
FOR (H + T - D) ≥ 18"**



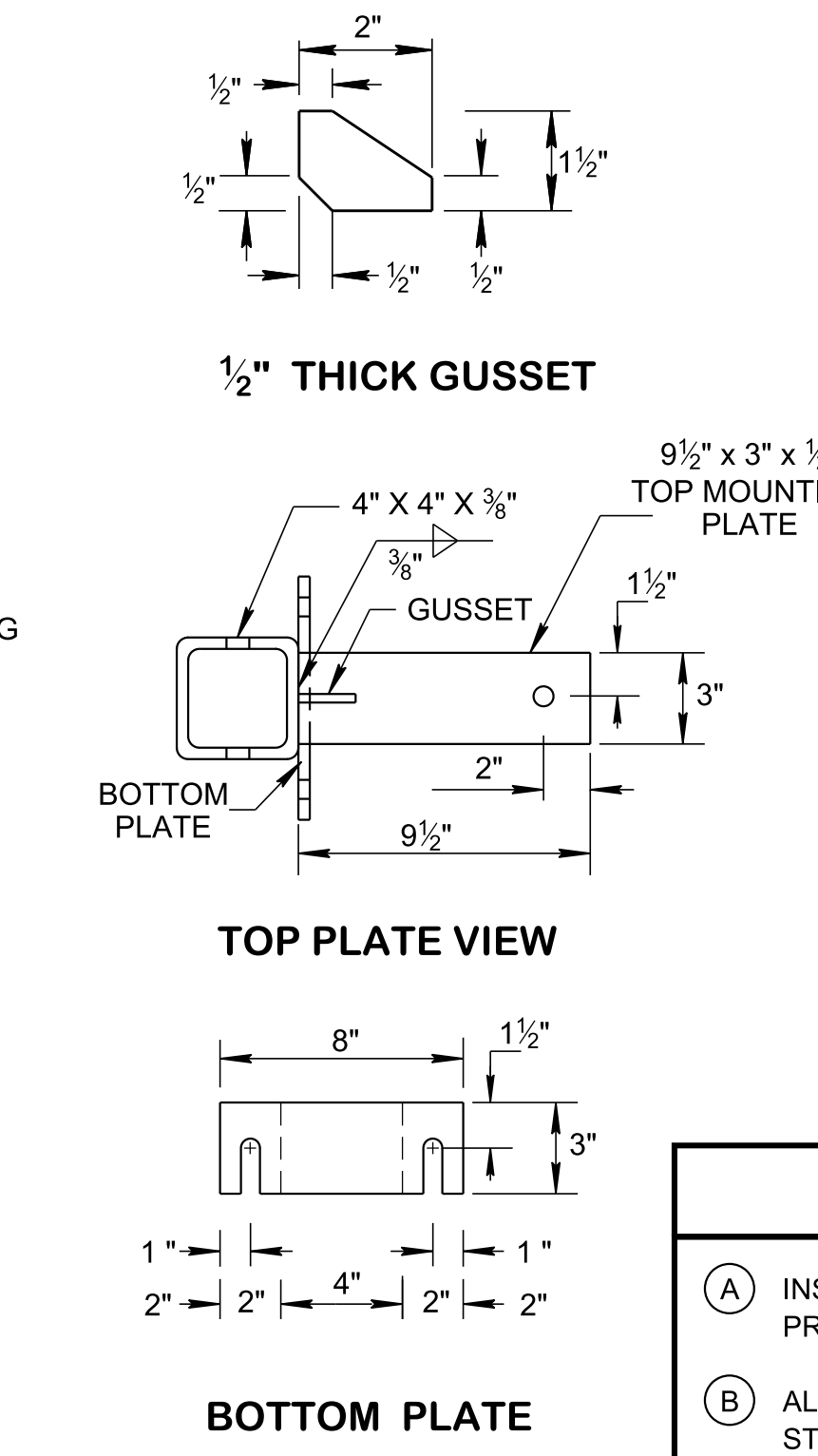
CROSS SECTION



ELEVATION



SOCKET ASSEMBLY VIEWS



TOP PLATE VIEW

BOTTOM PLATE

**TOP AND SIDE MOUNT - TYPE 4
FOR (H + T - D) ≥ 18"**

- GENERAL NOTES**
- (A) INSTALL THREADED ROD USING EPOXY ADHESIVE MATERIAL FROM QUALIFIED PRODUCT LIST.
 - (B) ALL THREADED RODS AND BOLTS SHALL BE INSTALLED WITH HEAVY HEX NUTS AND STANDARD WASHERS AND SHALL BE GALVANIZED. THREADED ROAD SHALL BE CONFORM TO ASTM A307/ ASTM F1554 GRADE 36, HEAVY HEX NUTS SHALL BE ASTM A563A AND 5/8" HEAVY HEX BOLT SHALL BE ASTM A325.
 - (C) THE SQUARE TUBE SHALL BE ASTM A500 GRADE B GALVANIZED STEEL.
 - (D) THE TOP AND BOTTOM MOUNTED PLATES AND GUSSET PLATE SHALL BE ASTM A572 GRADE 50 GALVANIZED STEEL. ALL MOUNTING ASSEMBLY SHALL BE GALVANIZED AFTER WELDING.
 - (E) ALL WELDING SHALL BE PERFORMED BY A WELDER QUALIFIED IN ACCORDANCE WITH THE AASHTO/AWS D1.5M/D1.5 BRIDGE WELDING CODE (LATEST EDITION).
- PAYMENT
- (F) PAYMENT FOR ASSEMBLY ELEMENTS SUCH AS SQUARE TUBE, HARDWARE INCLUDING DRILLING AND INSTALLING THREADED ROADS, NUTS AND BOLTS, WASHERS AND ALL PLATES WILL BE INCLUDED IN THE WEAK-POST GUARDRAIL ITEM NUMBER.

STATE OF TENNESSEE
 STANDARD
 DRAWING
DEPARTMENT OF TRANSPORTATION

**WEAK- POST
 GUARDRAIL
 ASSEMBLY DETAILS
 FOR TYPE 3 & 4**