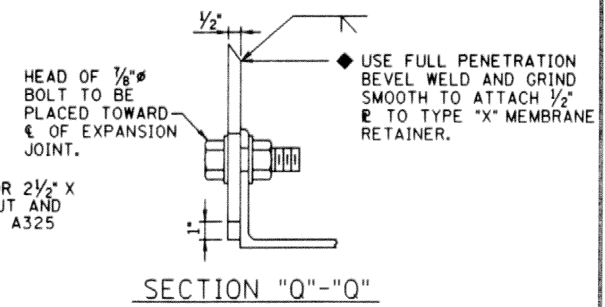
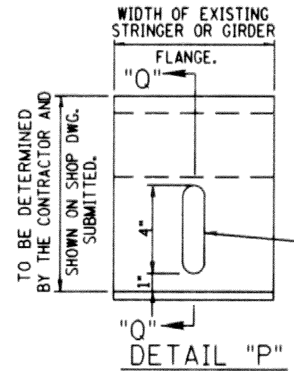
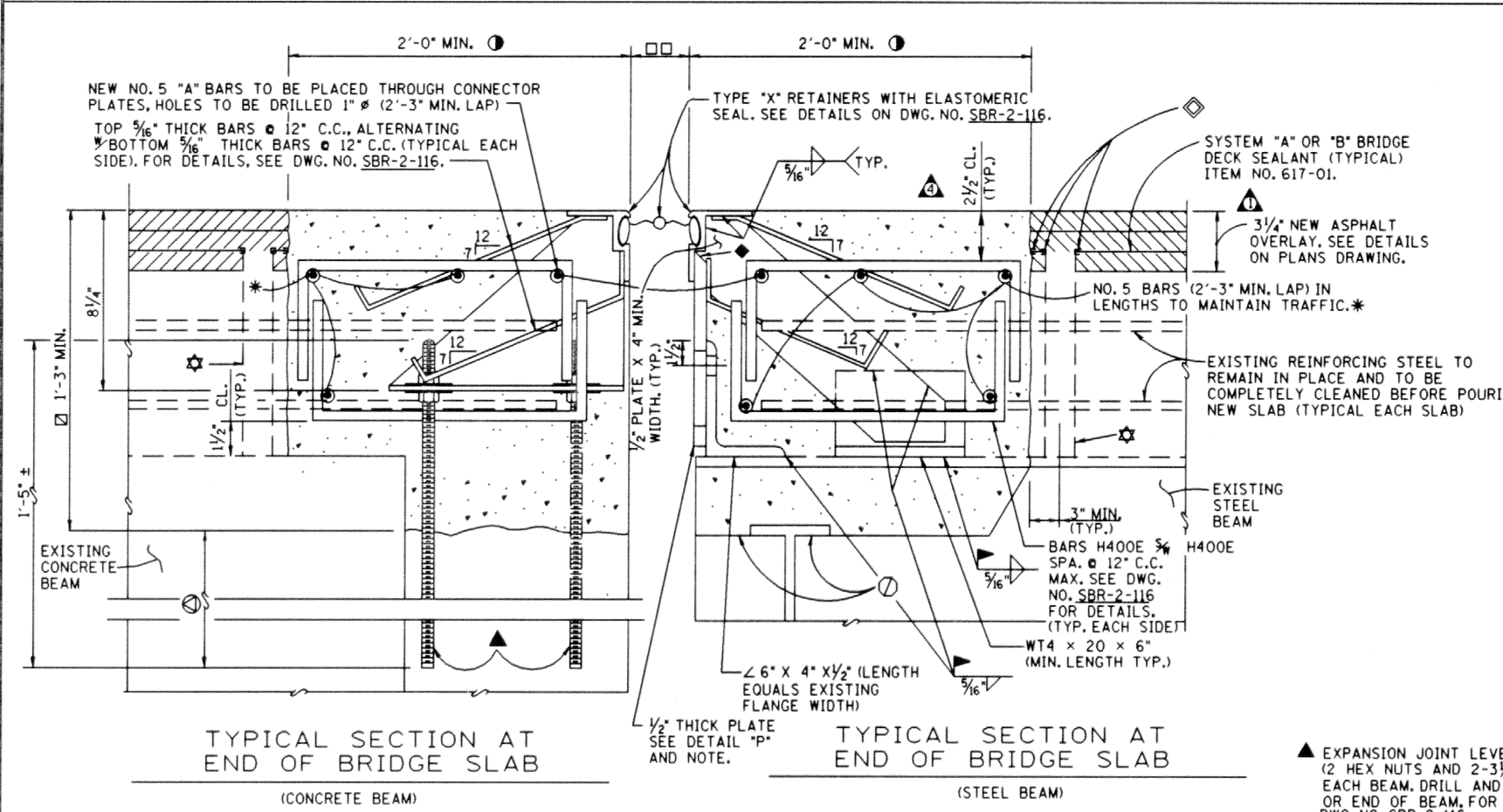


- ◆ DENOTES: MASTIC AS RECOMMENDED BY MANUFACTURER OF MEMBRANE. SEE STANDARD SPECIFICATIONS, ARTICLE 906.04.
- DENOTES: LIMITS OF CONCRETE REMOVAL AND REPOURING TO BE TO THE EXISTING END STEEL DIAPHRAGM AS SHOWN IN DETAILS. (TYPICAL)
- DENOTES: LIMITS OF EXISTING SLAB REMOVAL AND REPOURING.
- ★ NOTE: CONTRACTOR TO DRILL 1 1/2" Ø HOLE NEAR FACE OF CONCRETE CURB OR PARAPET AT LOW POINT EACH SIDE OF € BRIDGE. COST TO BE INCLUDED IN ITEM NO. 617-01.
- DENOTES: SET EXPANSION JOINT OPENING 2" AT 60° F. (ACTUAL SETTING AS PER TEMPERATURE CHART ON EXPANSION JOINT SHOP DRAWINGS).

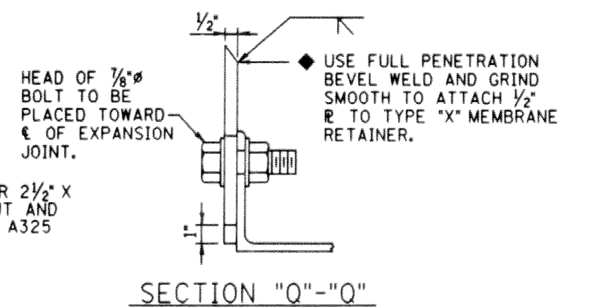
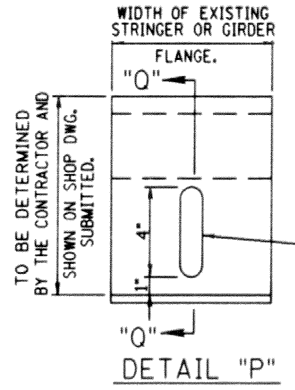
PROJECT NO.	YEAR	SHEET NO.	
	1991		
REVISIONS			
NO.	DATE	BY	BRIEF DESCRIPTION
1	7-29-92	WMM	REVISED NEW ASPHALT OVERLAY
2	3-7-95	TO	REMOVED SIGNATURES
3	1-4-96	TO	REVISED BR DRAWING NO. TO SBR DRAWING NO.
4	5-30-96	TO	REVISED BAR CLEARANCE



TYPICAL SECTION AT END OF BRIDGE SLAB (STEEL BEAM)  
 TYPICAL SECTION AT END OF BRIDGE SLAB (STEEL BEAM)  
**EXPANSION JOINT REPLACEMENT DETAILS - TYPE "C"**  
 BID UNDER ITEM NO. 604-10.35, EXPANSION JOINT REPAIR, LINEAR FEET



- ◆ DENOTES: MASTIC AS RECOMMENDED BY MANUFACTURER OF MEMBRANE. SEE STANDARD SPECIFICATIONS, ARTICLE 906.04.
- DENOTES: LIMITS OF CONCRETE REMOVAL AND REPOURING TO BE TO THE EXISTING END STEEL DIAPHRAGM AS SHOWN IN DETAILS. (TYPICAL)
- DENOTES: LIMITS OF EXISTING SLAB REMOVAL AND REPOURING.
- ◻ DENOTES: LIMITS OF EXISTING CONCRETE REMOVAL AND REPOURING.
- ⊙ DENOTES: 9" MIN. DEPTH FOR EPOXY GROUTED LEVELING RODS.
- ★ NOTE: CONTRACTOR TO DRILL 1 1/2" Ø HOLE NEAR FACE OF CONCRETE CURB OR PARAPET AT LOW POINT EACH SIDE OF € BRIDGE. COST TO BE INCLUDED IN ITEM NO. 617-01.
- DENOTES: SET EXPANSION JOINT OPENING 2" AT 60° F. (ACTUAL SETTING AS PER TEMPERATURE CHART ON EXPANSION JOINT SHOP DRAWINGS).



TYPICAL SECTION AT END OF BRIDGE SLAB (CONCRETE BEAM)  
 TYPICAL SECTION AT END OF BRIDGE SLAB (STEEL BEAM)  
**EXPANSION JOINT REPLACEMENT DETAILS - TYPE "D"**  
 BID UNDER ITEM NO. 604-10.40, EXPANSION JOINT REPAIR, LINEAR FEET

▲ EXPANSION JOINT LEVELING ASSEMBLIES - TWO (2) 3/8" Ø THREADED RODS, ASTM A36, (2 HEX NUTS AND 2-3 1/2" X 3 1/2" X 1/4" SQUARE WASHERS PER BOLT) LOCATED AT € OF EACH BEAM. DRILL AND EPOXY GROUT THREADED RODS 9" INTO EXISTING END DIAPHRAGM OR END OF BEAM. FOR OTHER EXPANSION JOINT LEVELING ASSEMBLIES DETAILS, SEE DWG. NO. SBR-2-116.

STATE OF TENNESSEE  
 DEPARTMENT OF TRANSPORTATION  
**STRIP SEAL EXPANSION JOINT REPLACEMENT CONSTRUCTION DETAILS TYPE "C" AND TYPE "D" 1991**

DESIGNED BY \_\_\_\_\_ DATE \_\_\_\_\_  
 DRAWN BY GRANT L. LLOYD DATE OCT. 89  
 SUPERVISED BY GENTRY MCINTURFF DATE OCT. 89  
 CHECKED BY MCINTURFF & GLASGOW DATE 7-90

B MINOR REVISION - FHWA APPROVAL NOT REQUIRED

SBR-2-118