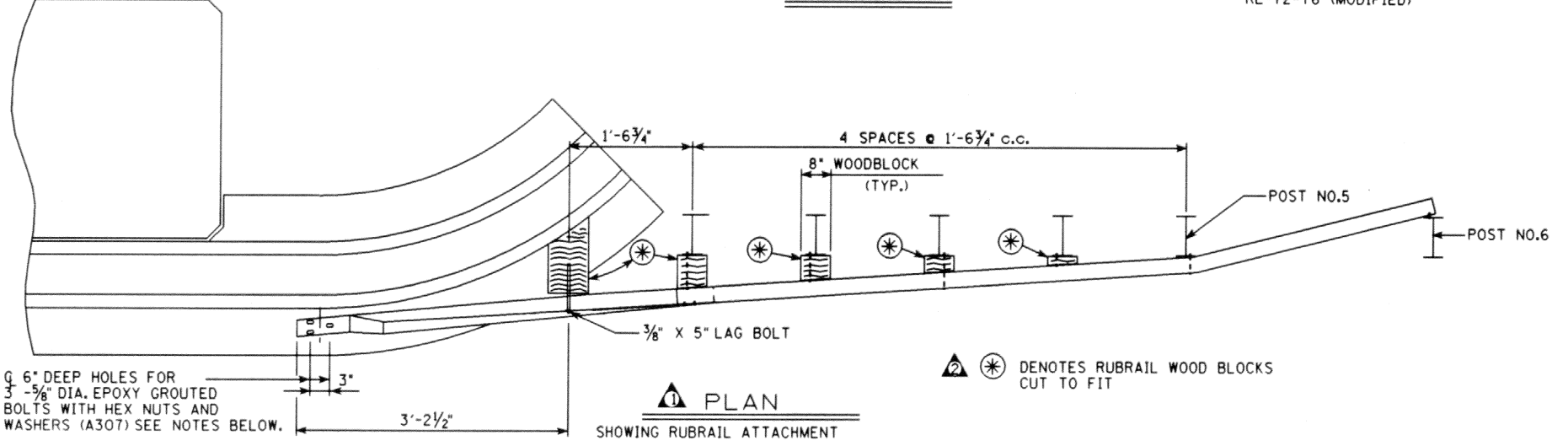
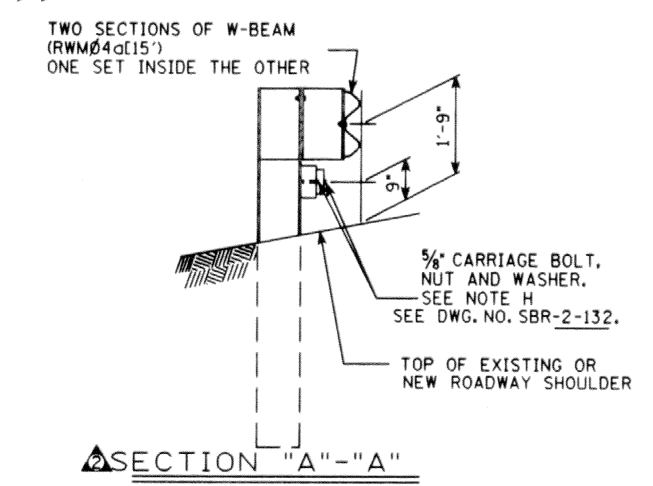
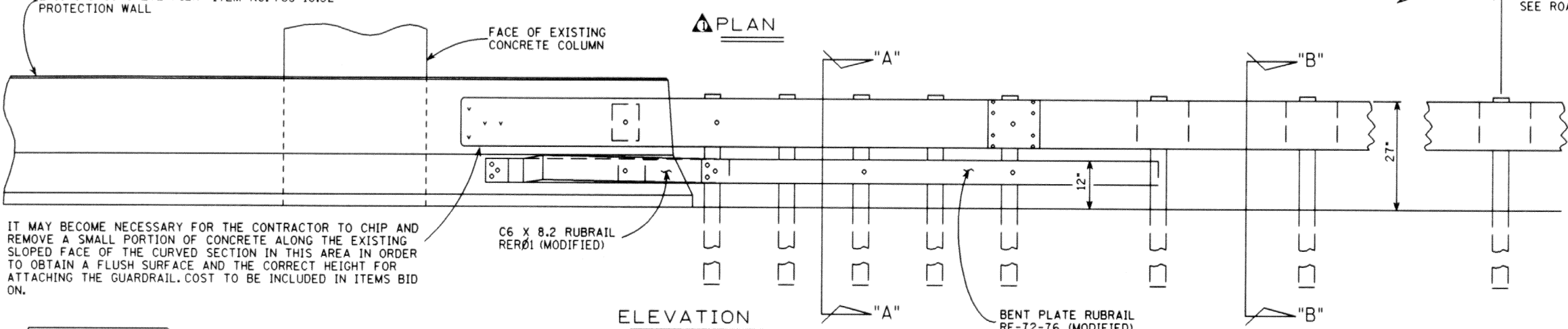
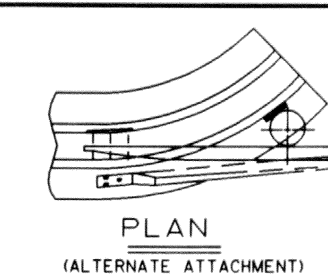
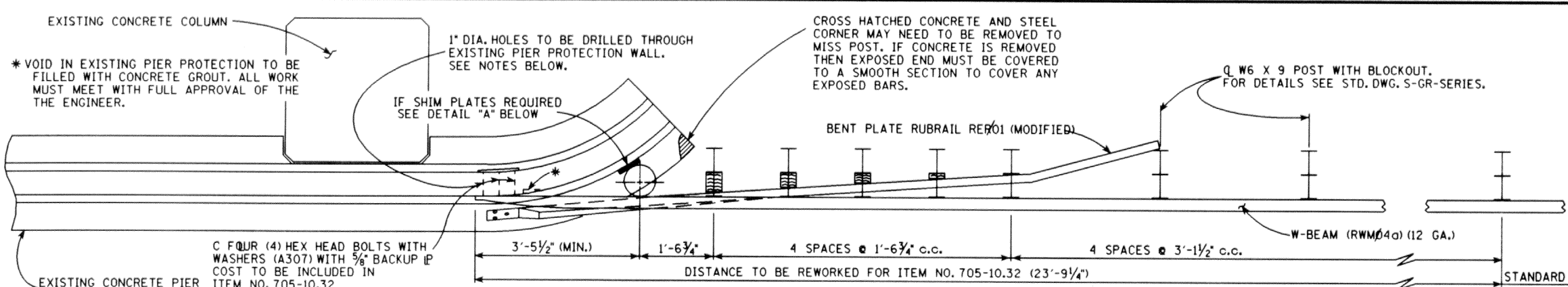
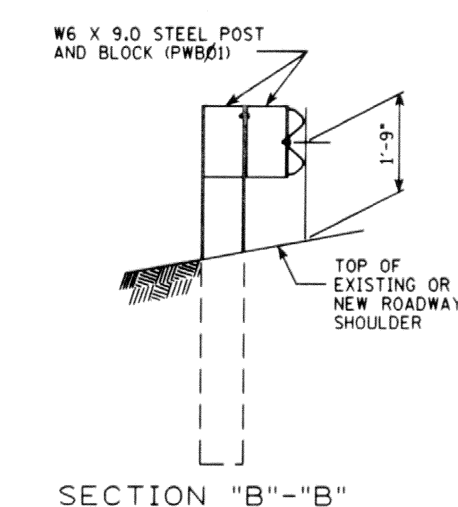


PROJECT NO.	YEAR	SHEET NO.	
	1991		
REVISIONS			
NO.	DATE	BY	BRIEF DESCRIPTION
1	10-28-91	T.C.	GENERAL REVISIONS
2	11-16-92	W.M.M.	REVISED DRAWING NUMBERS.
3	2-22-95	T.G.	REMOVED SIGNATURES
4	1-4-96	T.G.	REVISED BR DRAWING NO. TO SBR DRAWING NO.
5	11-05-01	WS	REVISED NOTE
6	1-22-02	WS	REVISED MATERIAL DESCRIPTION

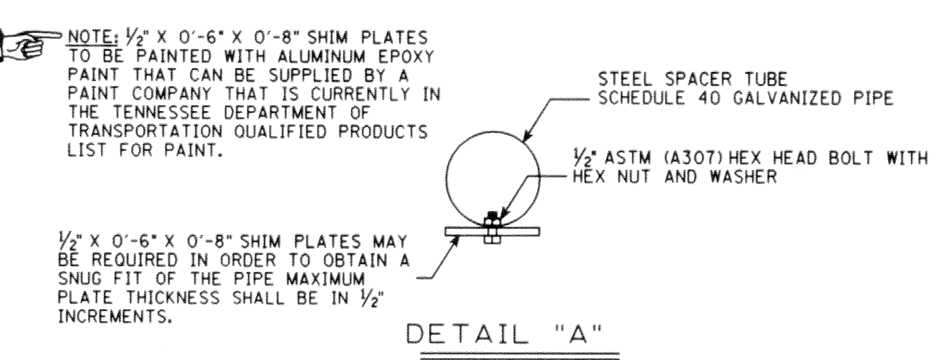


SPECIAL NOTE TO CONTRACTOR: THE CONTRACTOR SHALL HAVE THE NEW BENT PLATE RUBRAIL (RE-01) C6 X 8.2 RUBRAIL (RE-01), AND THE W-BEAM (RWM04a) SECTIONS SHALL BE SHOP FABRICATED TO ALIGN AND MEET ALL CONNECTION REQUIREMENTS AS SHOWN ON THESE DETAILS. NO VARIATIONS WILL BE ALLOWED IN POST & BLOCK-OUT SPACING. IT SHALL BE THE FULL RESPONSIBILITY OF THE CONTRACTOR TO FIELD MEASURE EACH INDIVIDUAL CONNECTION LOCATION BEFORE ANY SHOP FABRICATION OF THE RAILING IS BEGUN TO INSURE PROPER ALIGNMENT AND CONNECTION. SHOP DRAWINGS BASED ON FIELD MEASUREMENTS MUST BE APPROVED BY THE ENGINEER PRIOR TO ORDERING MATERIALS. ALL WORK MUST MEET WITH THE FULL APPROVAL OF THE ENGINEER, AND IF THE CONNECTIONS MUST BE CORRECTED FOR ANY REASON, IT SHALL BE AT THE FULL EXPENSE OF THE CONTRACTOR.



DETAILS GRA-32
ITEM NO.705-10.32
EACH

NOTE: THE LUMP SUM UNIT PRICE SHALL INCLUDE THE COST OF ALL GUARDRAIL HARDWARE, ADJUSTMENT TO THE EXISTING GUARDRAIL, ADDING RAIL PIECES, POSTS, DRILLING, ANCHORS, BLOCKOUTS, LABOR AND ANY MISCELLANEOUS MATERIALS NECESSARY TO INSTALL THE PROTECTIVE GUARDRAIL TO THE EXISTING PIER PROTECTION AS SHOWN ON THIS SHEET AND STANDARD DRAWINGS SBR-2-131 AND SBR-2-132 (FROM WALL CONNECTION TO STANDARD GUARDRAIL), ITEM NO.705-10.32, GUARDRAIL ATTACHMENT TO EXISTING BRIDGE PIER PROTECTION, EACH.



NOTE: CONTRACTOR TO VERIFY FIELD CONDITIONS PRIOR TO BIDDING TO DETERMINE WHAT SIZE SHIM AND PIPE WILL BE REQUIRED.

NOTE: FOR ADDITIONAL DETAILS AND NOTES NOT SHOWN ON THIS SHEET, SEE STANDARD DRAWINGS SBR-2-131, SBR-2-132, SBR-2-133, AND SBR-2-134.

NOTE: 1\"/>

SPECIAL NOTE: PORTIONS OF THE RAIL SECTIONS AS SHOWN ON THESE ATTACHMENT DETAILS MAY NOT BE STANDARD LENGTHS. IF IT BECOMES NECESSARY FOR THE CONTRACTOR TO CUT SECTIONS OF THE RAILS FROM STOCK LENGTHS IN ORDER TO CONFORM TO DETAILS AS SHOWN ON THESE SHEETS, THE CONTRACTOR WILL NOT RECEIVE ANY EXTRA COMPENSATION FOR CUTTING OF RAIL SECTIONS.

B/R MINOR REVISION - FHWA
APPROVAL NOT REQUIRED

DESIGNED BY R.M.D. & T.C. DATE 9-91
DRAWN BY K.L. FRANKENFIELD DATE 9-91
SUPERVISED BY W.M.M. & R.M.D. DATE 9-91
CHECKED BY MCINTURFF DATE 9-91