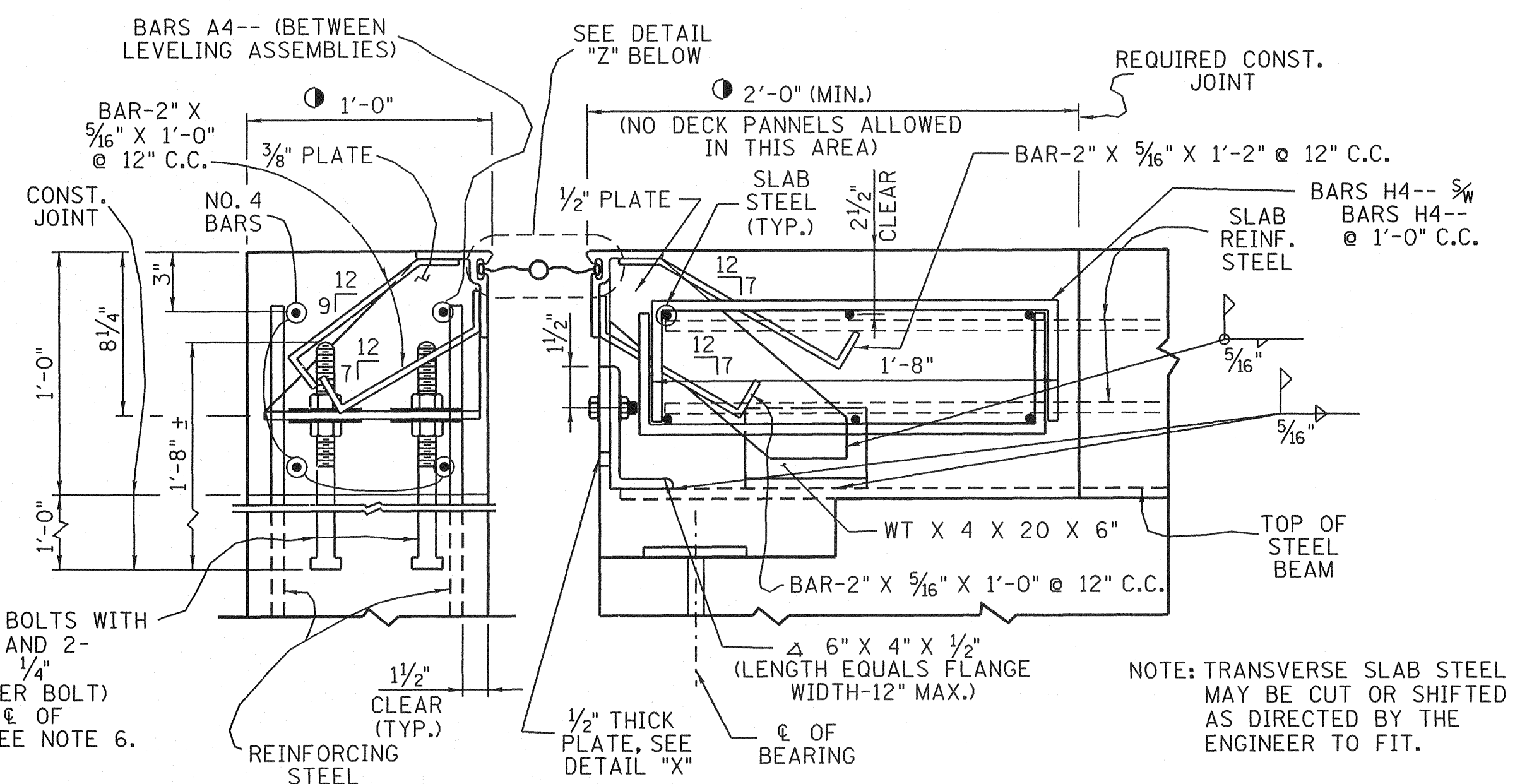
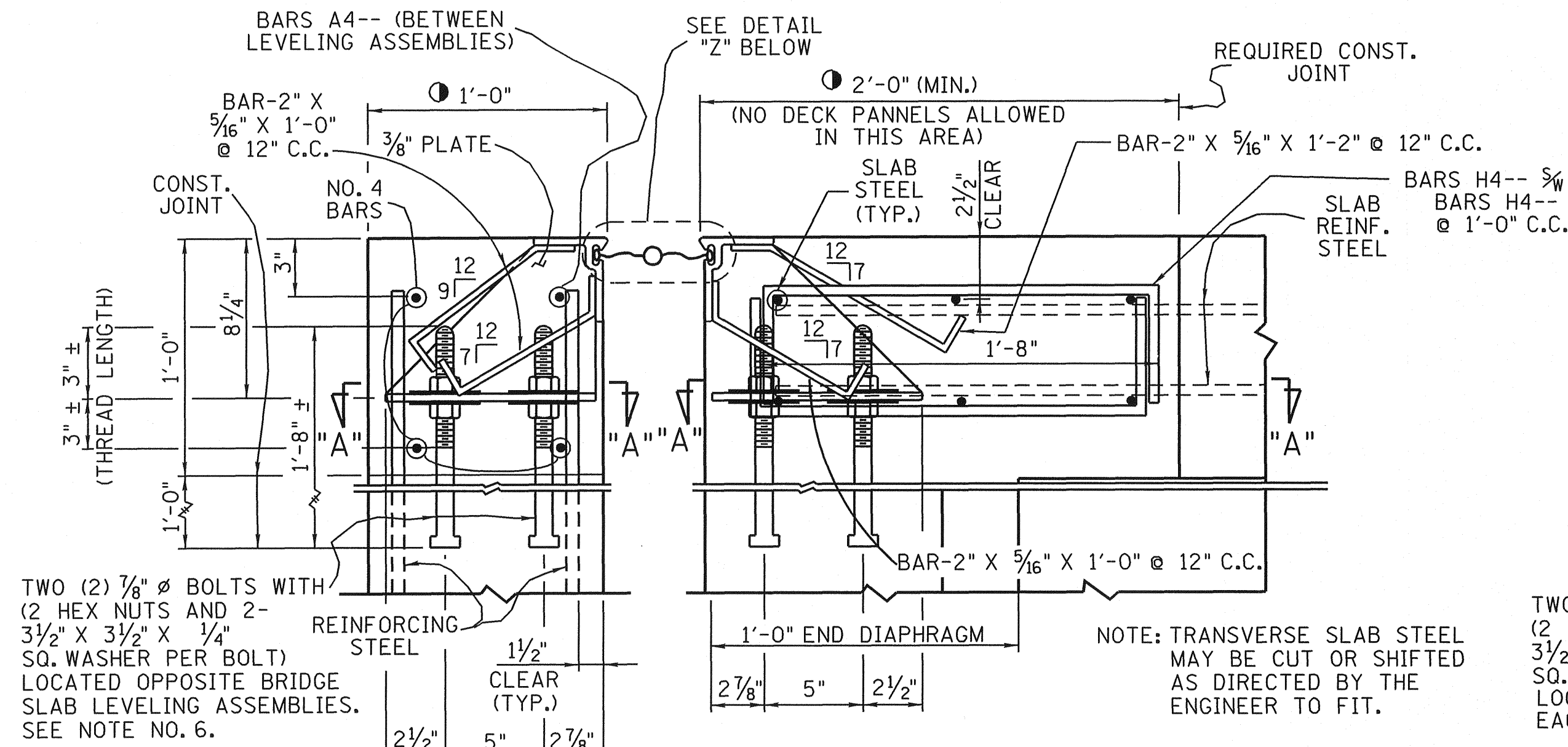


● DENOTES: TO BE POURED AFTER ALL OTHER DECK CONCRETE IS POURED AND EXPANSION BROUGHT TO PROPER GRADE AND SLOPE.

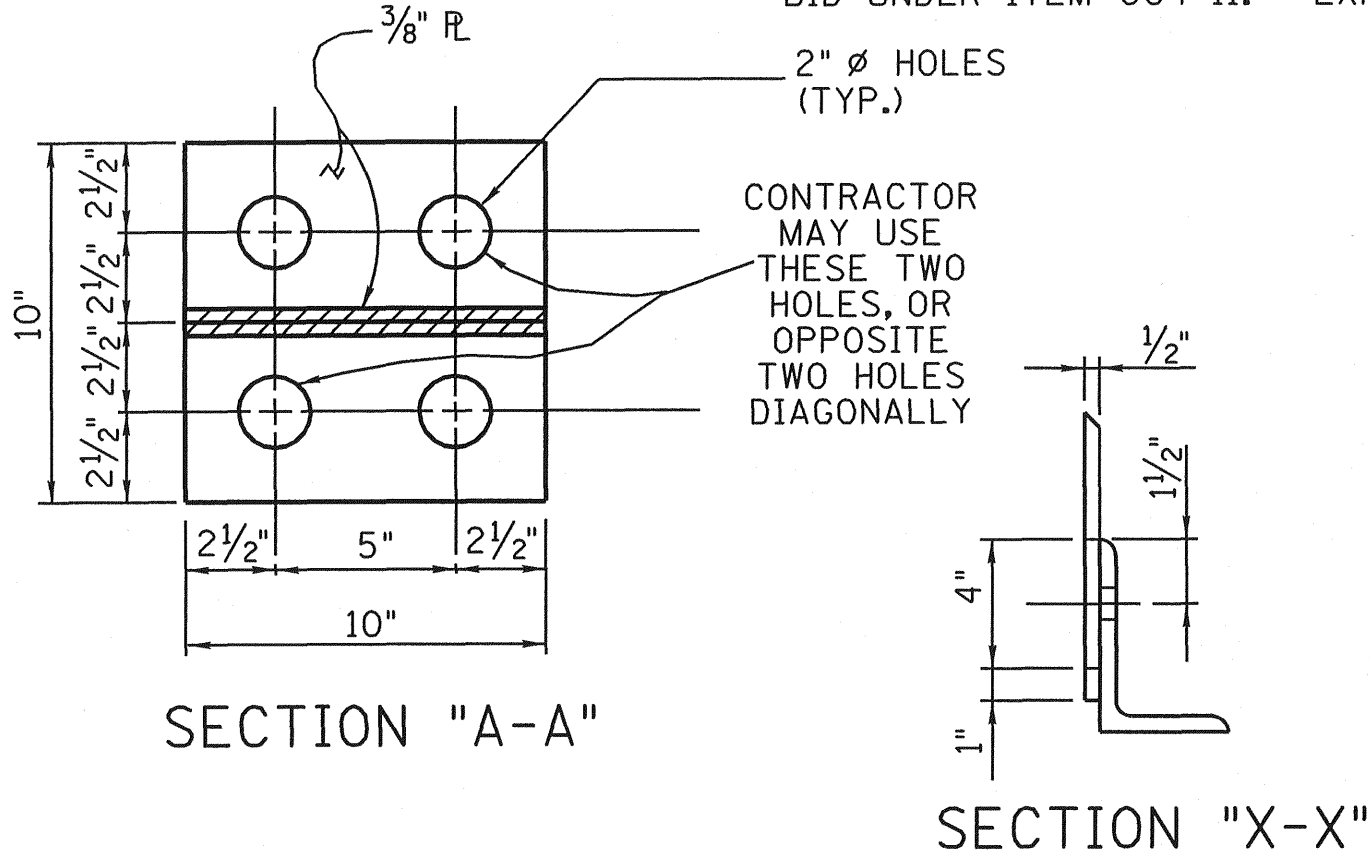
● DENOTES: TO BE POURED AFTER ALL OTHER DECK CONCRETE IS POURED AND EXPANSION BROUGHT TO PROPER GRADE AND SLOPE.

| PROJECT NO. | YEAR | SHEET NO. | |
|-------------|---------|-----------|--|
| | 1986 | | |
| REVISIONS | | | |
| NO. | DATE | BY | BRIEF DESCRIPTION |
| 4 | 8-25-86 | RMD | REARRANGE DETAILS, ADDED GUIDE ANGLES & NOTES 8 & 9. |
| 5 | 2-21-89 | RMD | GEN. REV. & WORK /W DWG. NO. M156-108A |
| 6 | 7-31-91 | RMD | GEN. REV. & NOTES 3, 4 & 9 |
| 7 | 9-1-91 | M.A.H. | CHANGED DWG. NO. FROM M-156-108 |
| 8 | 2-14-94 | BRB | REVISED NOTES 2, 3 AND 5 |
| 9 | 11-1-10 | EPW | REVISED NOTE 3 |



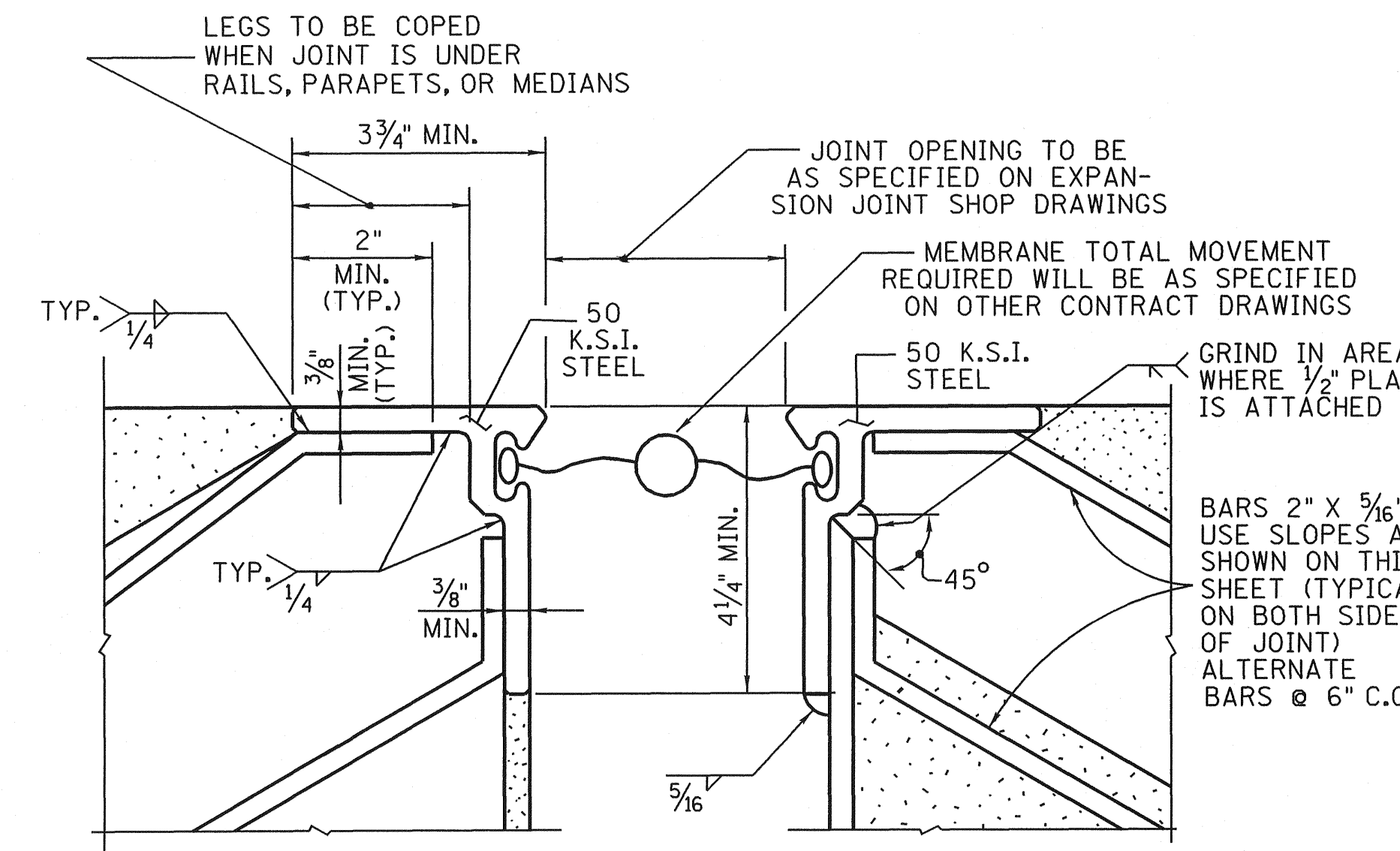
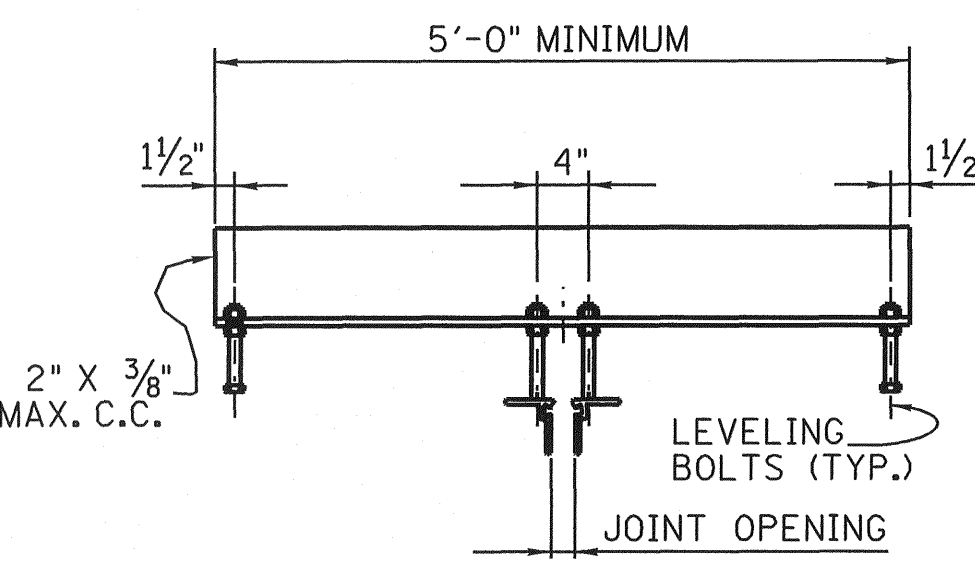
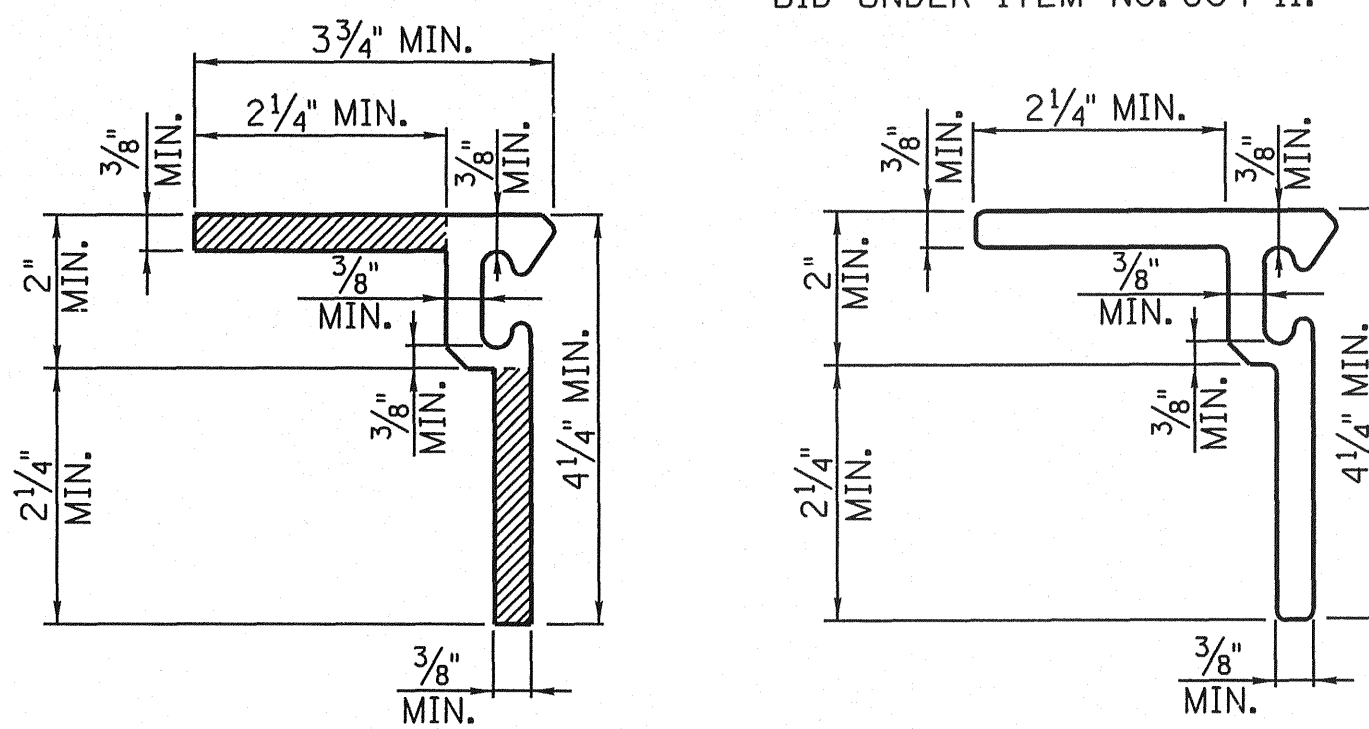
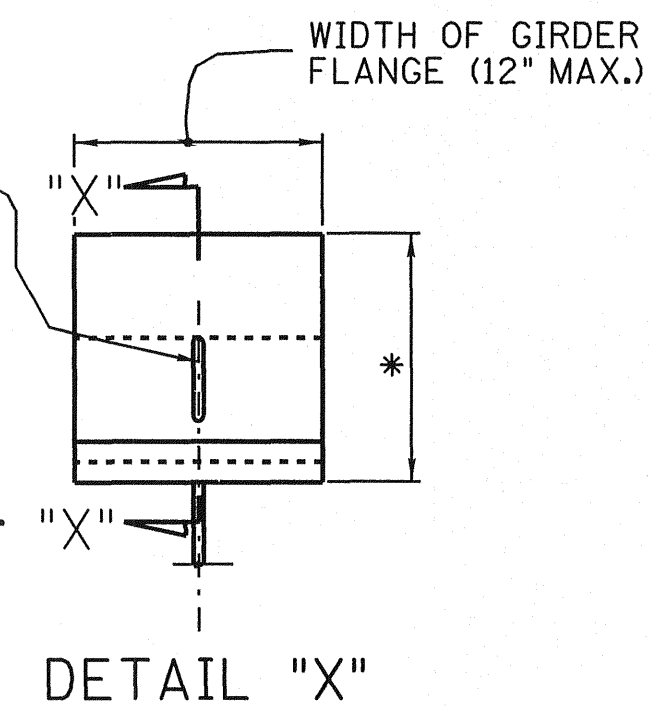
TYPICAL SECTION @ ABUTMENT BACKWALL
TYPICAL SECTION @ END OF BRIDGE SLAB
EXPANSION JOINT DETAIL - CONCRETE BRIDGES
BID UNDER ITEM 604-11.-- EXPANSION DEVICE

TYPICAL SECTION @ ABUTMENT BACKWALL
TYPICAL SECTION @ END OF BRIDGE SLAB
EXPANSION JOINT DETAILS-STEEL BRIDGES
BID UNDER ITEM NO. 604-11.-- EXPANSION DEVICE

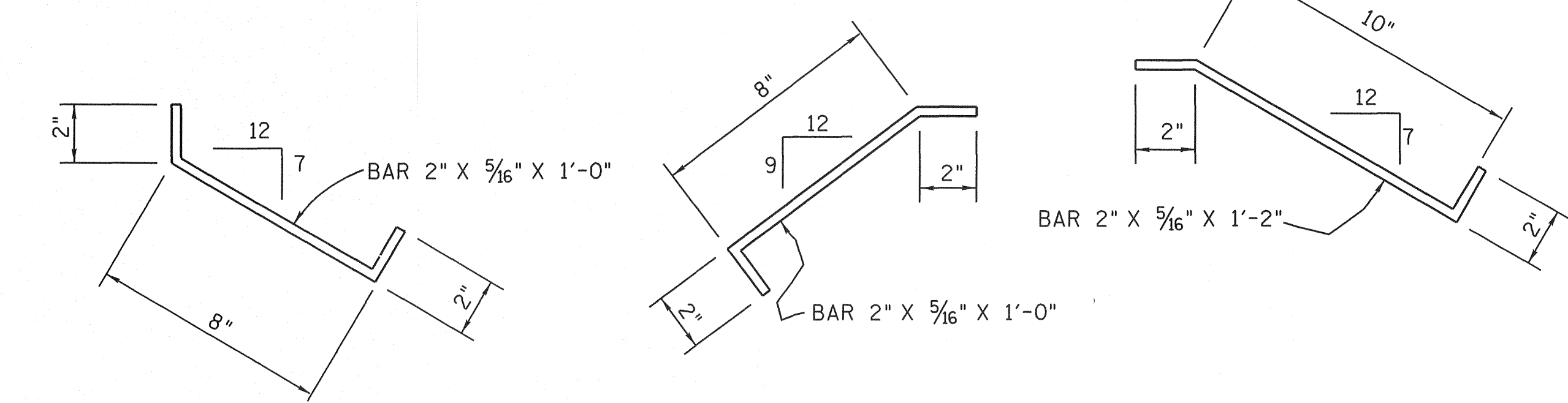


1" X 4" SLOT IN R FOR 2 1/2" X 7/8" BOLT WITH HEX NUT AND DOUBLE WASHER (ASTM A325 BOLTS)

* DENOTES: TO BE DETERMINED BY THE CONTRACTOR AND SHOWN ON SHOP DRAWINGS SUBMITTED.



TYPICAL ANCHOR STRAP TO MEMBRANE RETAINER CONNECTION



- GENERAL NOTES**
- ROADWAY EXPANSION DEVICES SHALL BE FABRICATED TO MATCH CROSS SLOPE, SKEW AND GRADE OF EXISTING BRIDGE DECK. SEE SPECIAL PROVISION 604S.
 - THE ELASTOMERIC MEMBRANE MUST BE CONTINUOUS WITH NO FIELD SPLICES AND NO FIELD CUTTING. THE RETAINER THAT HOLDS THE MEMBRANE MAY BE AN EXTRUSION OR ROLLED SHAPE AND SHALL BE 50 KSI STEEL. THE REMAINDER OF THE EXPANSION JOINT SHALL BE A36 STEEL.
 - ALL STEEL THAT IS PART OF THE JOINT ASSEMBLY SHALL EITHER BE PAINTED IN ACCORDANCE WITH "SYSTEM A" OF THE STANDARD SPECIFICATIONS, SUBSECTION 603.06, OR GALVANIZED, IN ACCORDANCE WITH ASTM A-123. UNLESS SHOWN OTHERWISE ON THE PLANS, COST TO BE INCLUDED IN THE UNIT PRICE BID FOR THE EXPANSION JOINT.
 - THE SHOP DRAWINGS SHALL PROVIDE INFORMATION REGARDING MATERIAL SPECIFICATIONS, GEOMETRY, A TABLE OF VARIABLE TEMPERATURES WITH CORRESPONDING SETTINGS AND A BILL OF MATERIALS.
 - WELDING SHALL CONFORM TO AASHTO SPECIFICATIONS FOR BRIDGES, CURRENT EDITION, AND PERFORMED BY CERTIFIED WELDERS. FABRICATORS SHALL BE CERTIFIED UNDER THE AISC QUALITY CERTIFICATION CATEGORY I, CONVENTIONAL STEEL STRUCTURES.
 - LEVELING BOLT ASSEMBLIES SHALL BE LOCATED OPPOSITE BEAM CONNECTIONS ON STEEL BRIDGES EXCEPT WHEN DISTANCE BETWEEN ASSEMBLIES EXCEEDS 10 FEET. ADDITIONAL CONNECTIONS SHALL THEN BE MADE TO END DIAPHRAGMS WITH CORRESPONDING BOLT ASSEMBLIES IN BACKWALL, SPACING NOT TO EXCEED 10 FEET. LEVELING BOLT ASSEMBLIES ON CONCRETE BRIDGES SHALL BE LOCATED IN THE END DIAPHRAGMS BETWEEN GIRDERS WITH CORRESPONDING ASSEMBLIES IN THE BACKWALL AT A SPACING NOT TO EXCEED 10 FEET. LEVELING BOLT ASSEMBLIES SHALL BE LOCATED IN THE FIELD BASED UPON DIMENSIONS TAKEN FROM SHOP DRAWINGS.
 - MAXIMUM OPENING OF FULLY EXTENDED JOINT SHALL NOT EXCEED 4".
 - JOINTS SHALL BE SHIPPED FROM THE MANUFACTURER WITH ALIGNMENT GUIDE ANGLES SIMILAR TO THOSE SHOWN ON THIS SHEET.
 - ANY REINFORCING BARS ADDED OR DIFFERENT FROM THAT SHOWN ON THE CONTRACT DRAWINGS DUE TO THE TYPE OF STRIPSEAL BEING USED SHALL BE EPOXY COATED AND LISTED IN THE BILL OF MATERIAL ON THE SHOP DRAWING.

MINOR REVISION - FHWA APPROVAL NOT REQUIRED

STATE OF TENNESSEE
DEPARTMENT OF TRANSPORTATION
STRIPSEAL EXPANSION JOINT
NEW CONSTRUCTION

DESIGNED BY
DRAWN BY D. HAMPTON
SUPERVISED BY
CHECKED BY

DATE
DATE 6-88
DATE
DATE

CORRECT Edward P. Wasserman
ENGINEER OF STRUCTURES