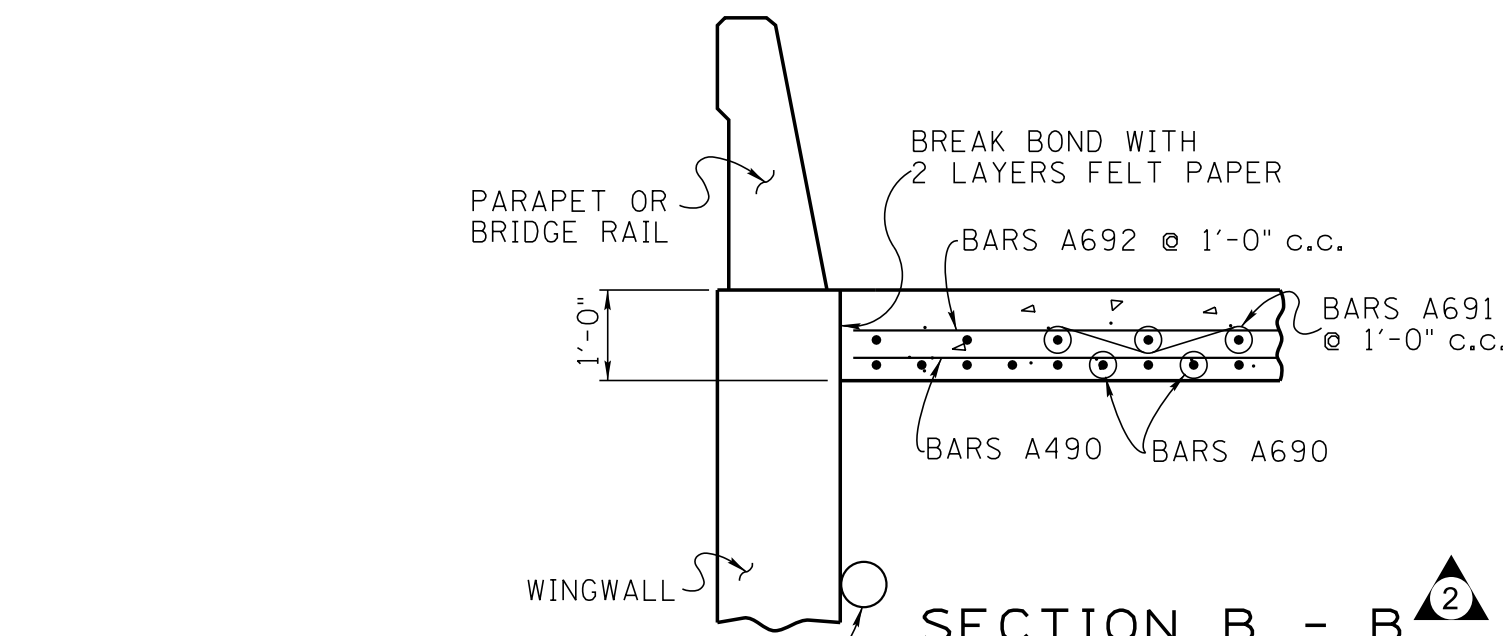
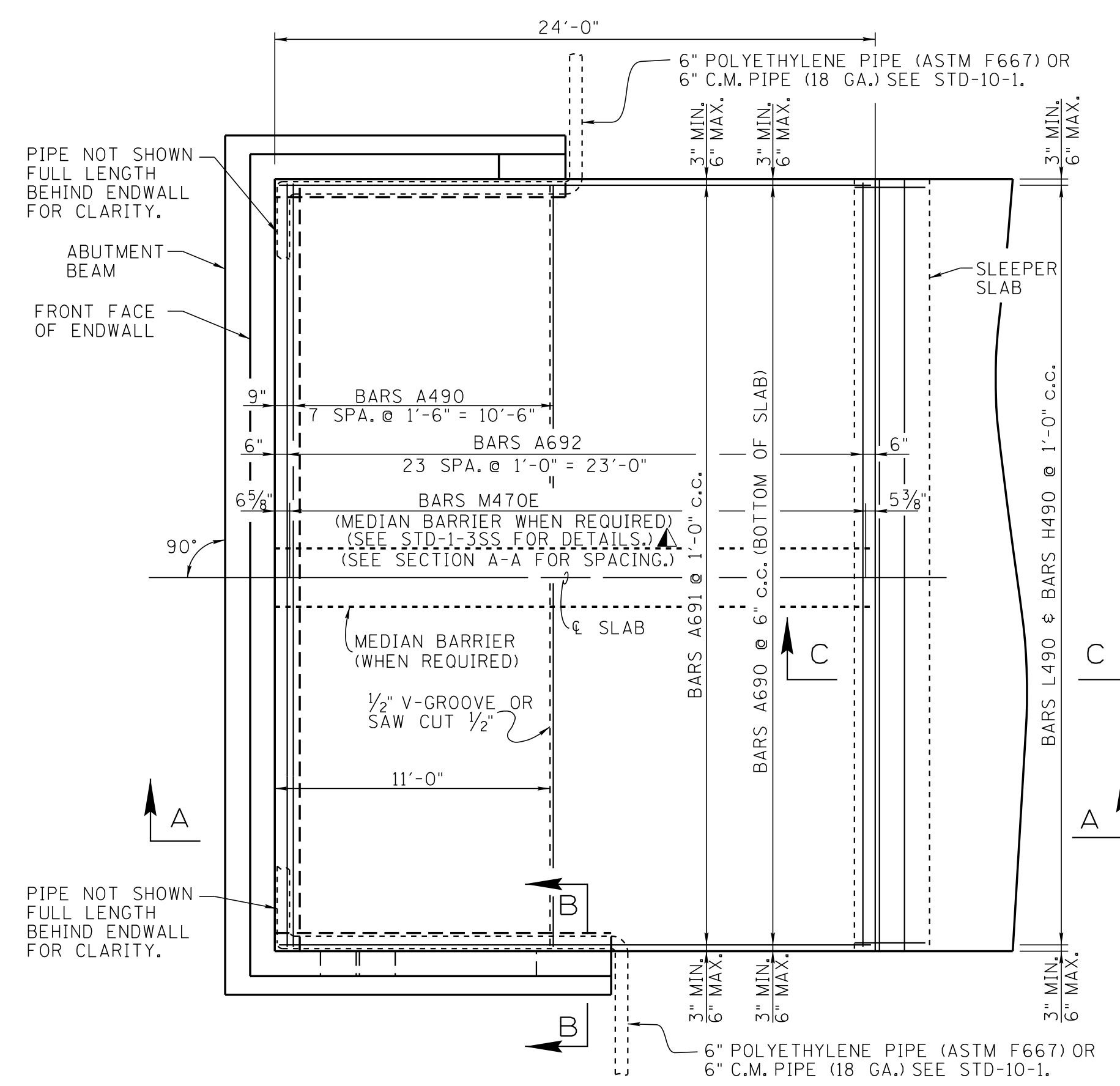


● DENOTES: BARS M470E (MEDIAN BARRIER WHEN REQUIRED)

NOTE: WHEN BRIDGE END DRAINS ARE REQUIRED, ANY REINFORCING STEEL INTERFERING WITH BRIDGE END DRAIN SHALL BE CUT IN FIELD TO PROVIDE 2" CLEARANCE.

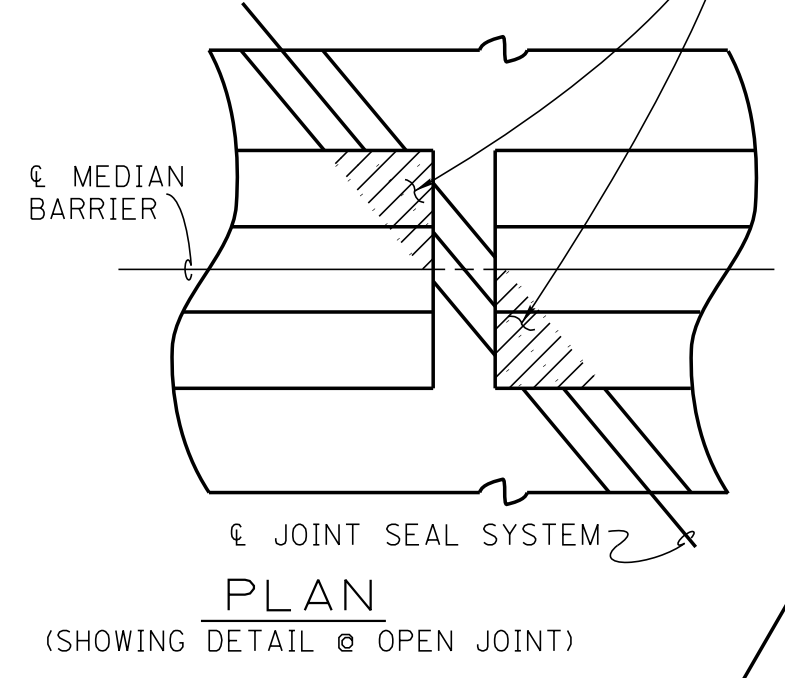


NOTE: SLAB TO BE POURED DIRECTLY ON MINERAL AGGREGATE BASE STONE.

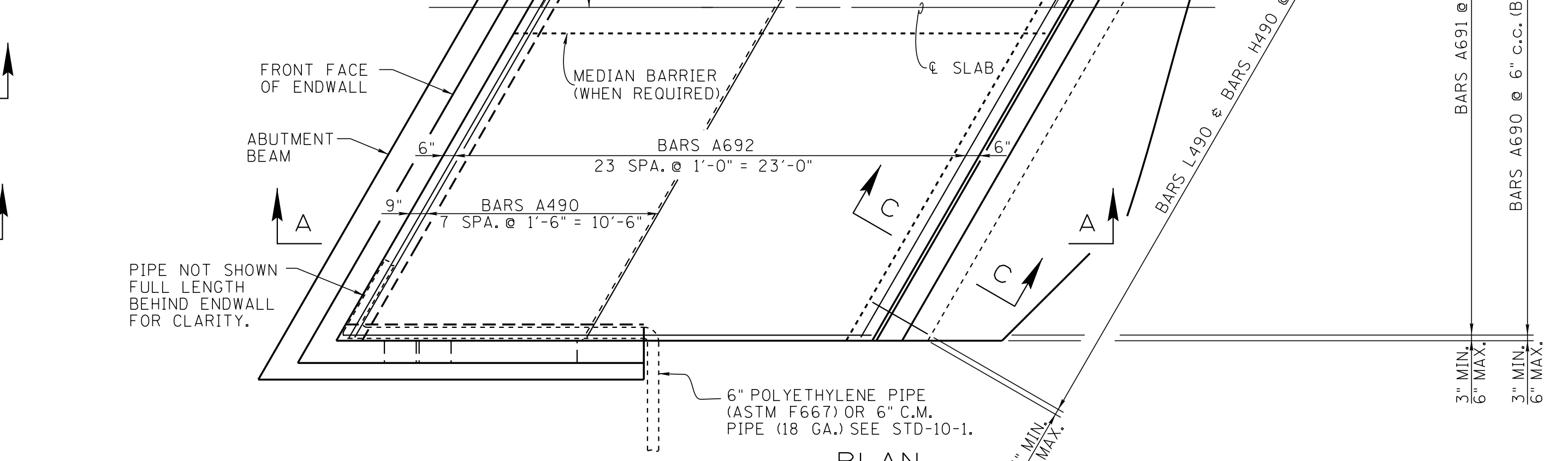


PLAN (90° SKEW)

BREAK BOND BETWEEN MEDIAN BARRIER AND JOINT OR SLAB ON ANY PORTION OF MEDIAN BARRIER PAST EDGE OF JOINT SEAL SYSTEM WITH 1 INCH STYROFOAM. ANY REINFORCING IN BOND BREAK AREA PROJECTING OUT OF SLAB SHALL BE CUT FLUSH WITH SLAB.



PLAN (SHOWING DETAIL @ OPEN JOINT)

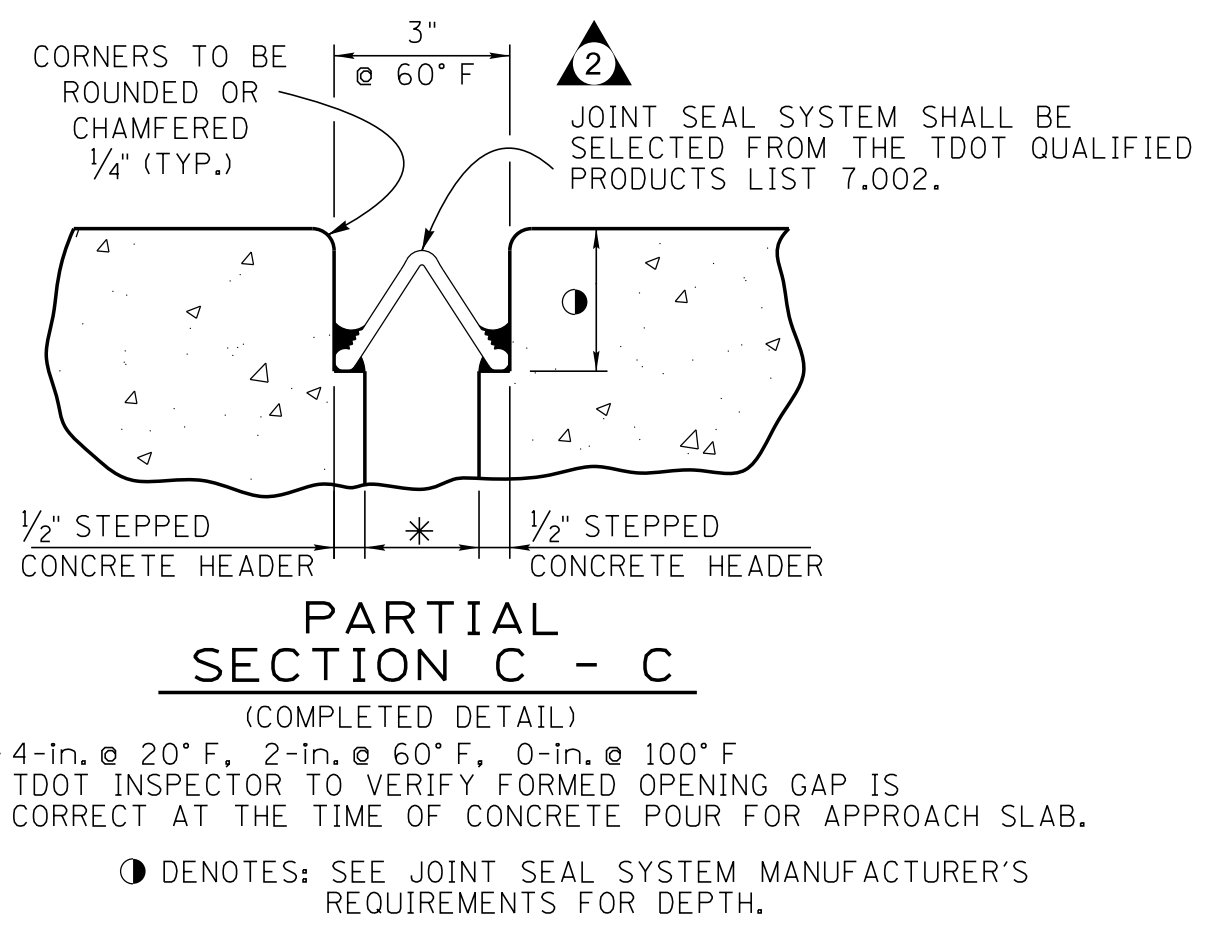


PLAN (VARIABLE SKEW)

DESIGNED BY: C.M. HILES/A. PRICE  
 DRAWN BY: FRANKENFIELD/G. YOUNG  
 SUPERVISED BY: WASSERMAN/KNIAZEWCZ  
 CHECKED BY: I. KNIAZEWCZ

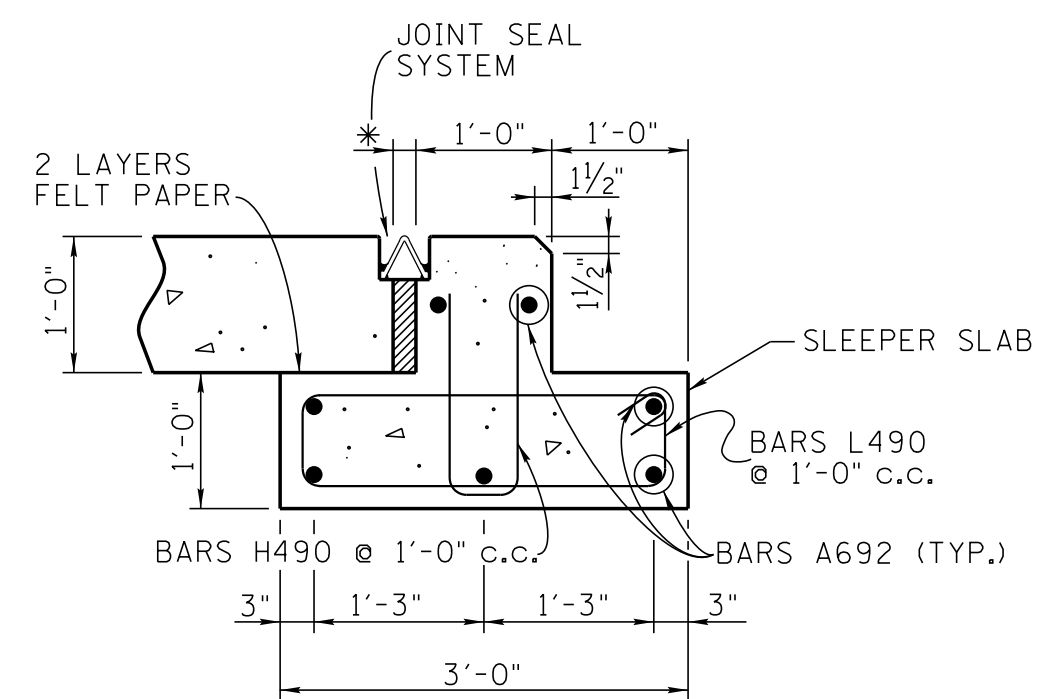
DATE: \_\_\_\_\_  
 DATE: \_\_\_\_\_  
 DATE: \_\_\_\_\_  
 DATE: \_\_\_\_\_

▲ DENOTES: FOR STD-1-3 MEDIAN BARRIER, USE BARS B490E AT 1'-0" AND SEE STD-1-3 FOR DETAILS.

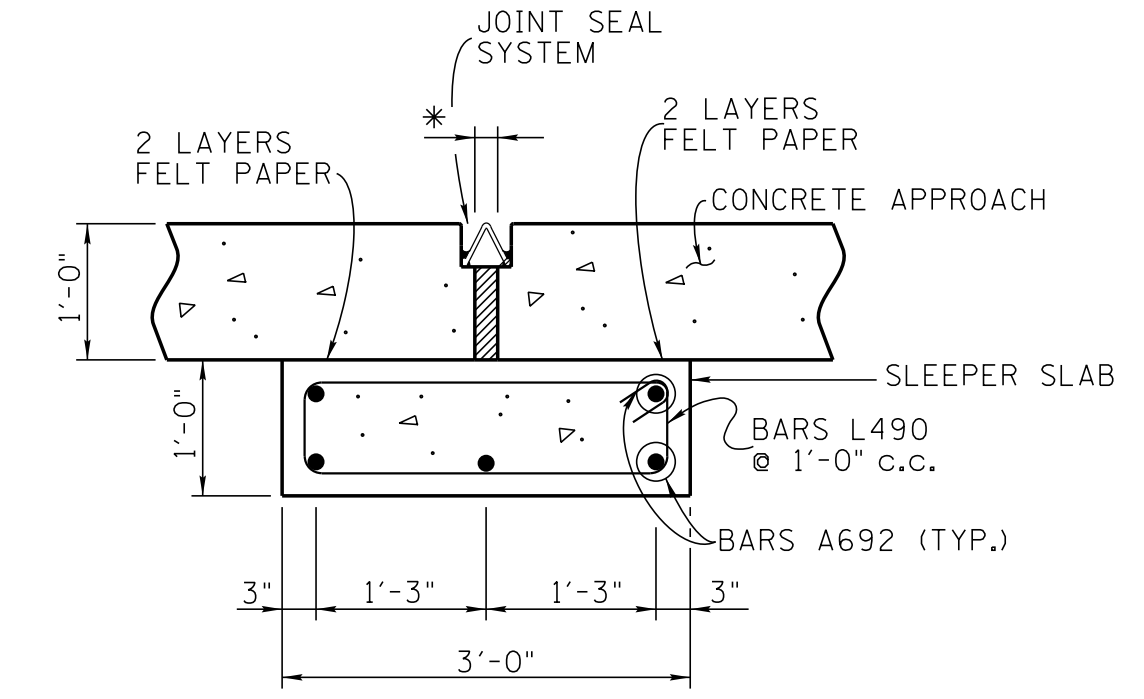


PARTIAL SECTION C - C (COMPLETED DETAIL)

\* 4-in. @ 20" F, 2-in. @ 60" F, 0-in. @ 100" F TDOT INSPECTOR TO VERIFY FORMED OPENING GAP IS CORRECT AT THE TIME OF CONCRETE POUR FOR APPROACH SLAB.  
 ○ DENOTES: SEE JOINT SEAL SYSTEM MANUFACTURER'S REQUIREMENTS FOR DEPTH.



ALTERNATE SECTION C - C (ASPHALT APPROACH)



ALTERNATE SECTION C - C (CONCRETE APPROACH)

★ OMIT BARS H490 & 2 BARS A692 WHEN USING THIS ALTERNATE SECTION C-C.

BILL OF STEEL

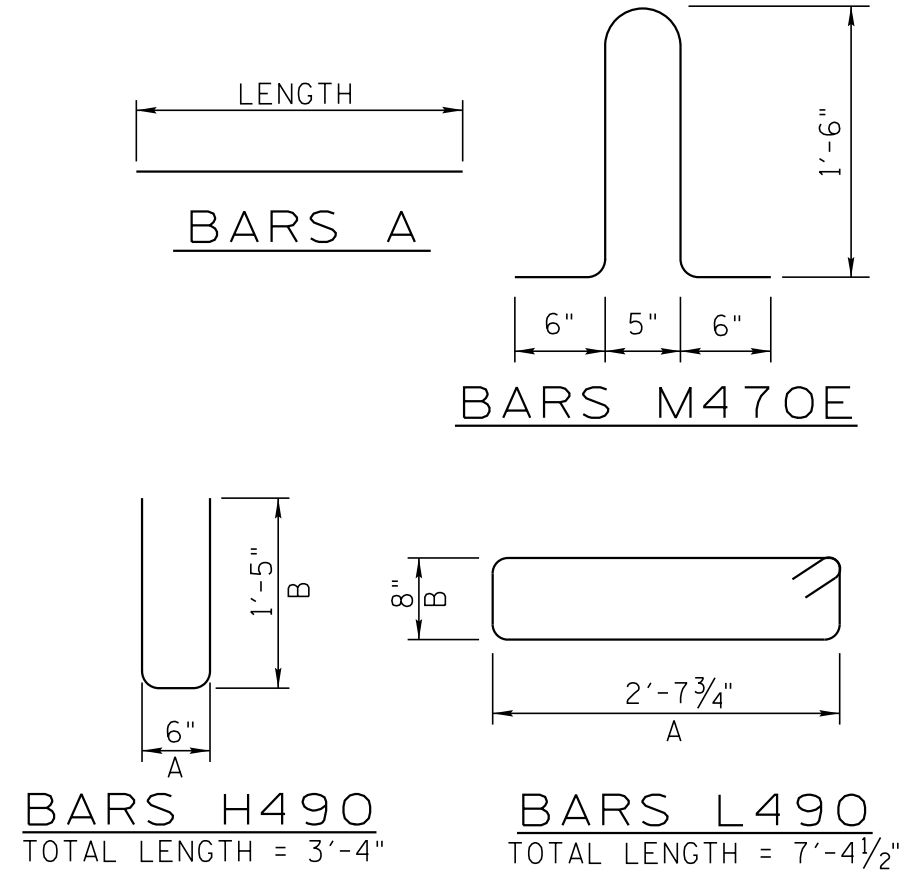
BARS	LOCATION	SIZE	NO. REQ'D	BENDING DIMENSIONS				LENGTH
				A	B	C	D	
M470E	STD-1-3SS MED. BARRIER	4	5					4'-2"
A490	SLAB	4	8					▲
A690	SLAB	6	▲					12'-0"
A691	SLAB	6	▲					23'-8"
A692	SLAB	6	31					▲
H490	FOOTING	4	▲	6"	1'-5"			3'-4"
L490	FOOTING	4	▲	2'-7 3/4"	8"			7'-4 1/2"

▲ DENOTES: THESE NUMBERS VARY DEPENDING ON ROADWAY WIDTH.

PROJECT NO.	YEAR	SHEET NO.
	2021	

REVISIONS			
NO.	DATE	BY	BRIEF DESCRIPTION
1	5/10/21	TAK	RE-ISSUED DRAWING
2	3/01/22	TAK	REVISED SECTIONS AND NOTES
3	6/05/23	ALP	GENERAL REVISIONS



GENERAL NOTES

- QUANTITIES FOR CLASS "A" CONCRETE, REGULAR AND EPOXY COATED REINFORCING STEEL (WHEN REQUIRED FOR MEDIAN BARRIER), STYROFOAM, GRATE, AND MISCELLANEOUS MATERIALS FOR BRIDGE END DRAIN (WHEN REQUIRED) ARE TO BE INCLUDED IN THE UNIT PRICE BID FOR PAVEMENT AT BRIDGE ENDS.
- COST OF MINERAL AGGREGATE (TYPE "A" GRADING "D" OR TYPE "B" GRADING "C" OR "D") SHALL BE PAID IN ACCORDANCE WITH STD-10-1.
- TOP OF SLAB AND TOP OF SLEEPER SLAB TO CONFORM TO ROADWAY SLOPE AND GRADE.
- CONCRETE: TO BE THE SAME CLASS AS USED FOR THE BRIDGE DECK PER THE BRIDGE PLANS (CLASS "D", "DS" OR "L")
- REINFORCING STEEL: SHALL BE ASTM A615 GRADE 60 UNLESS NOTED OTHERWISE. SEE SECTIONS 604 AND 907 OF THE STANDARD SPECIFICATIONS.
- CONSTRUCTIONS SPECIFICATIONS: TENNESSEE DEPARTMENT OF TRANSPORTATION STANDARD SPECIFICATIONS FOR ROAD AND BRIDGE CONSTRUCTION (CURRENT EDITION)
- NOTE: THE APPROACH SLAB SHALL NOT BE POURED UNTIL THE ADJACENT END SPAN DECK SLAB IS IN PLACE AND ACCEPTED BY THE ENGINEER.
- NOTE: THE APPROACH SLAB CONTROL ELEVATIONS SHALL BE ADJUSTED (IF REQUIRED) TO MATCH THE IN-PLACE DECK SLAB IN BOTH THE TRANSVERSE AND LONGITUDINAL DIRECTIONS.
- JOINT SEAL SYSTEM: THE EXPANSION JOINT SYSTEM USED SHALL BE ON THE TDOT QUALIFIED PRODUCTS LIST. THE JOINT SYSTEM SHALL BE INSTALLED UNDER THE DIRECT SUPERVISION OF AN AUTHORIZED TECHNICIAN PROVIDED BY THE EXPANSION JOINT SUPPLIER, FOR ALL JOINTS ON ALL BRIDGES WITHIN THE PROJECT. THE TECHNICIAN MUST APPROVE ALL ASPECTS OF THE GEOMETRY AND PREPARATION, INCLUDING GRINDING AND/OR GROOVING, PRIOR TO ANY JOINT MATERIAL INSTALLATION.
- NOTE: COST OF EXPANSION JOINT SYSTEM, INCLUDING ALL MATERIALS AND LABOR NECESSARY FOR COMPLETE INSTALLATION, SHALL BE INCLUDED IN THE UNIT PRICE BID FOR ITEM NO. 604-03.04, PAVEMENT AT BRIDGE ENDS.
- NOTE: THE JOINT SEAL SYSTEM IS NOT REQUIRED WHEN THE BRIDGE HAS AN EXPANSION JOINT AT THE ADJACENT ABUTMENT.

STATE OF TENNESSEE  
 DEPARTMENT OF TRANSPORTATION  
 REINFORCED CONCRETE  
 PAVEMENT AT BRIDGE ENDS  
 (APPROACH SLAB)  
 2021

CORRECT *Jed A. Krzyzewicz*  
 ENGINEER OF STRUCTURES