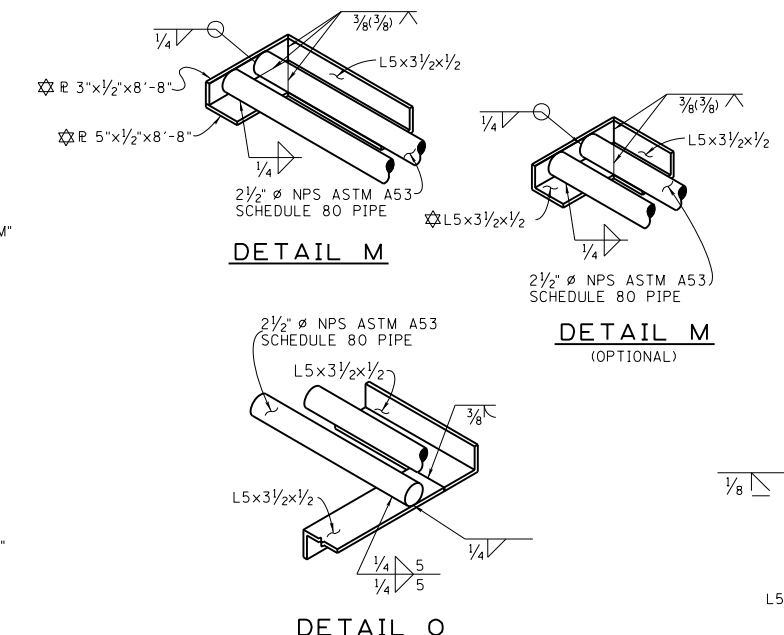
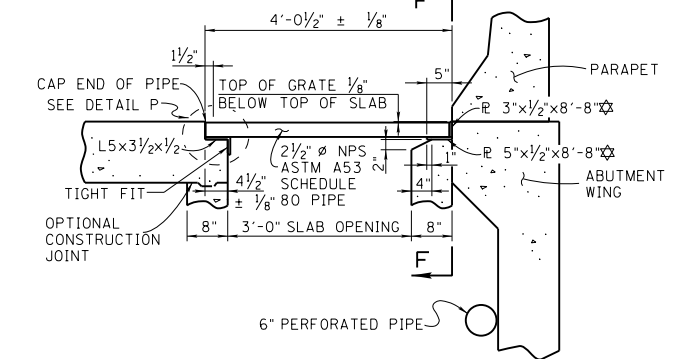
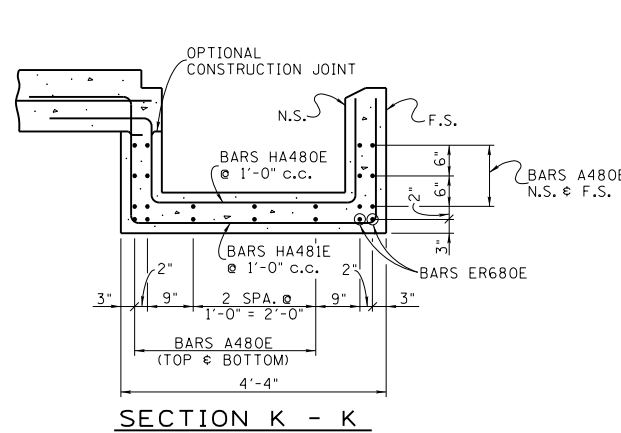
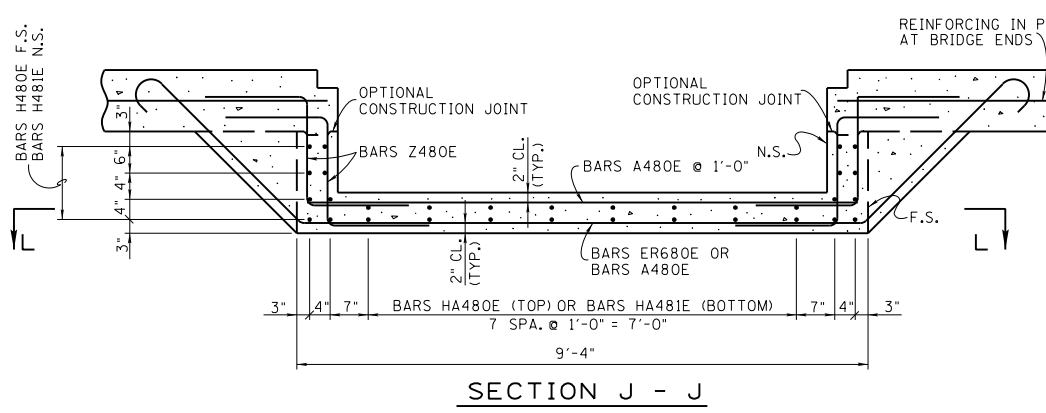
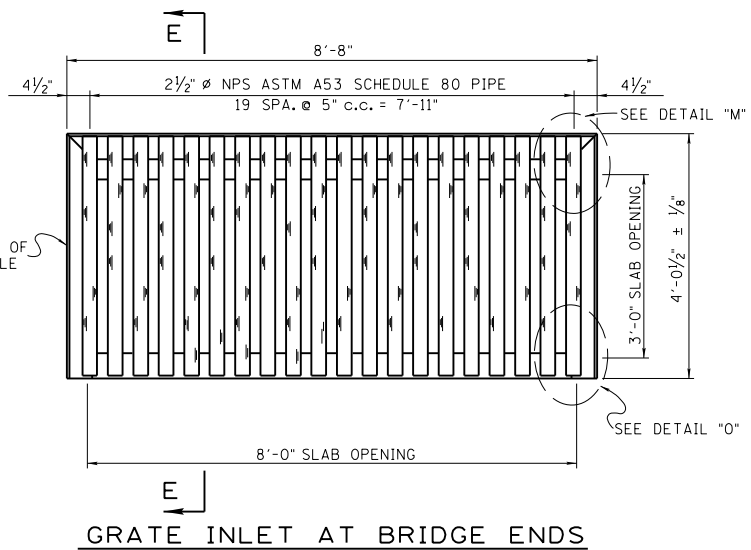
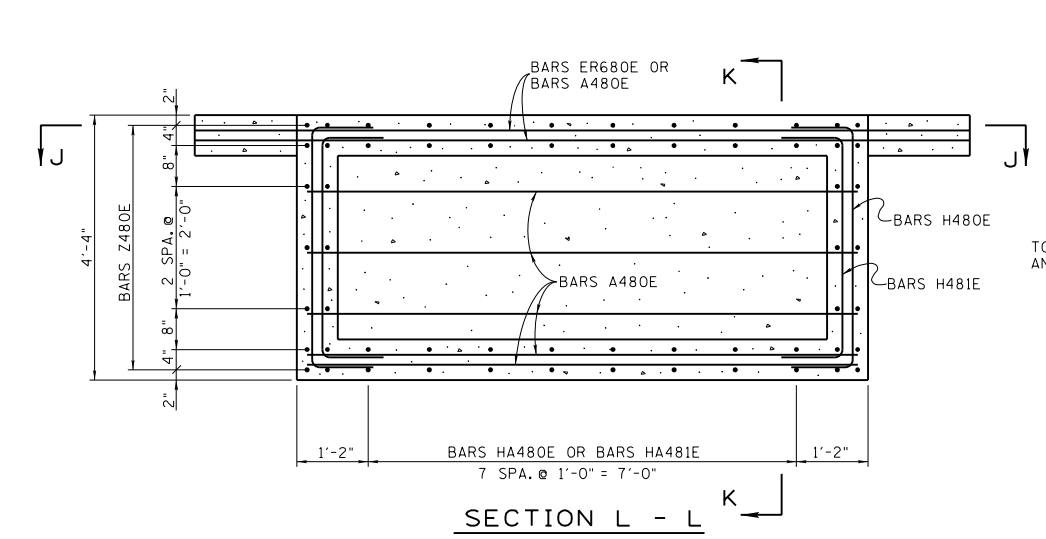


NOTE: AFTER ALL FABRICATION IS COMPLETE, THE GRATE ASSEMBLY SHALL BE ZINC COATED AS SPECIFIED BY ASTM A-123. SPECIFICATIONS FOR HOT-DIP GALVANIZED COATINGS. COATING THICKNESS SHALL BE AS SPECIFIED IN TABLE FOR MATERIAL 1/4" AND OVER. (2.3 OZ/FT<sup>2</sup>).

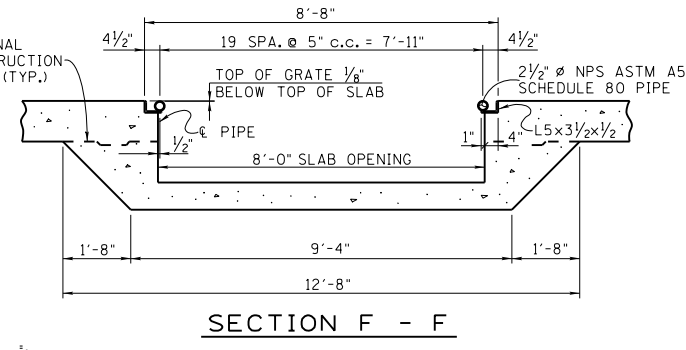
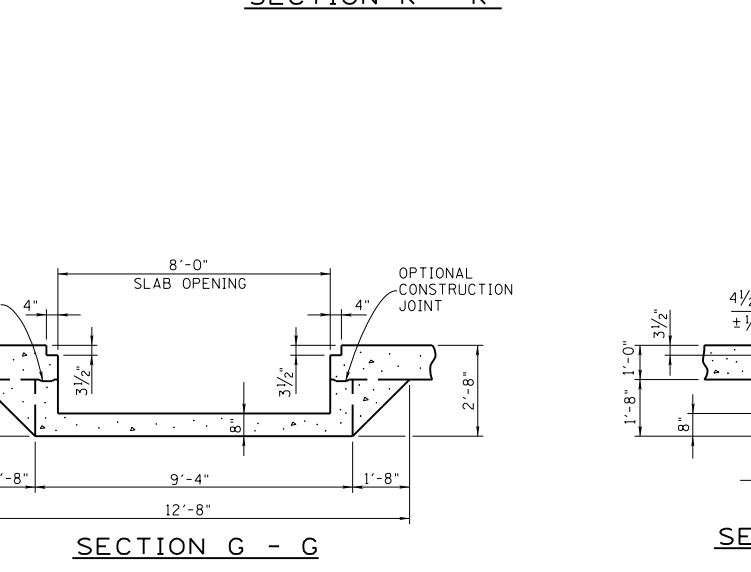
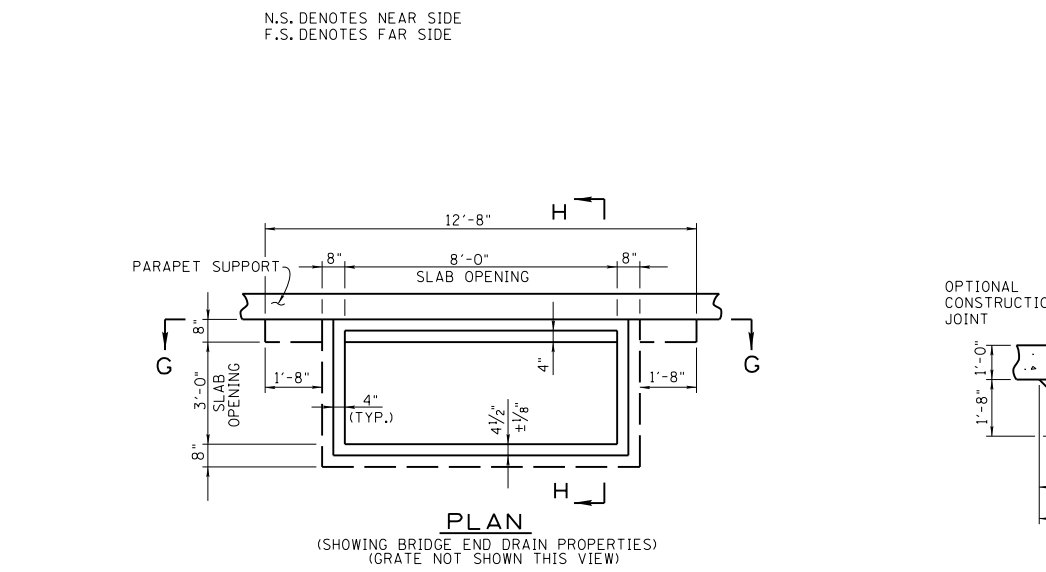


PROJECT NO.	YEAR	SHEET NO.	
	2021		
REVISIONS			
NO.	DATE	BY	BRIEF DESCRIPTION
1	5/10/21	TAK	RE-ISSUED DRAWING

NOTE: FOR ADDITIONAL DETAILS SEE STD-1-1 THRU 7.



☆ DENOTES: THE CONTRACTOR HAS THE OPTION TO USE L5x3 1/2x1/2 IN LIEU OF R 3"x1/2"x8'-8" @ R 5"x1/2"x8'-8". SEE DETAIL "M" (OPTIONAL).



DESIGNED BY C.M. HILES  
 DRAWN BY KIM FRANKENFIELD  
 SUPERVISED BY C.M. HILES  
 CHECKED BY \_\_\_\_\_

DATE \_\_\_\_\_  
 DATE \_\_\_\_\_  
 DATE \_\_\_\_\_  
 DATE \_\_\_\_\_

CORRECT  
 Ted A. Krzyzewicz  
 ENGINEER OF STRUCTURES