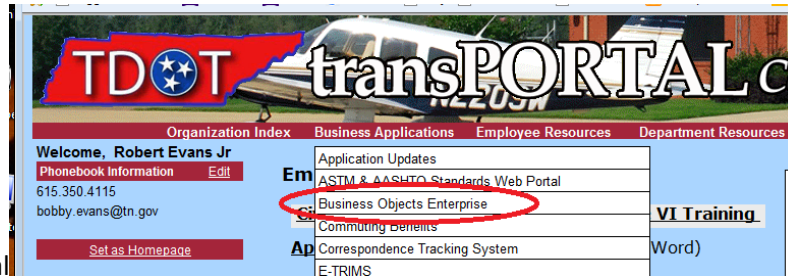
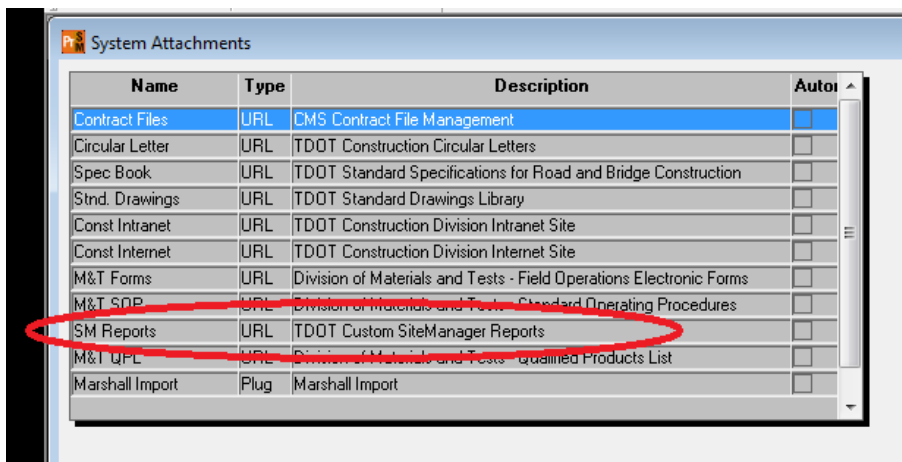


There are a couple of different ways to access BOE:

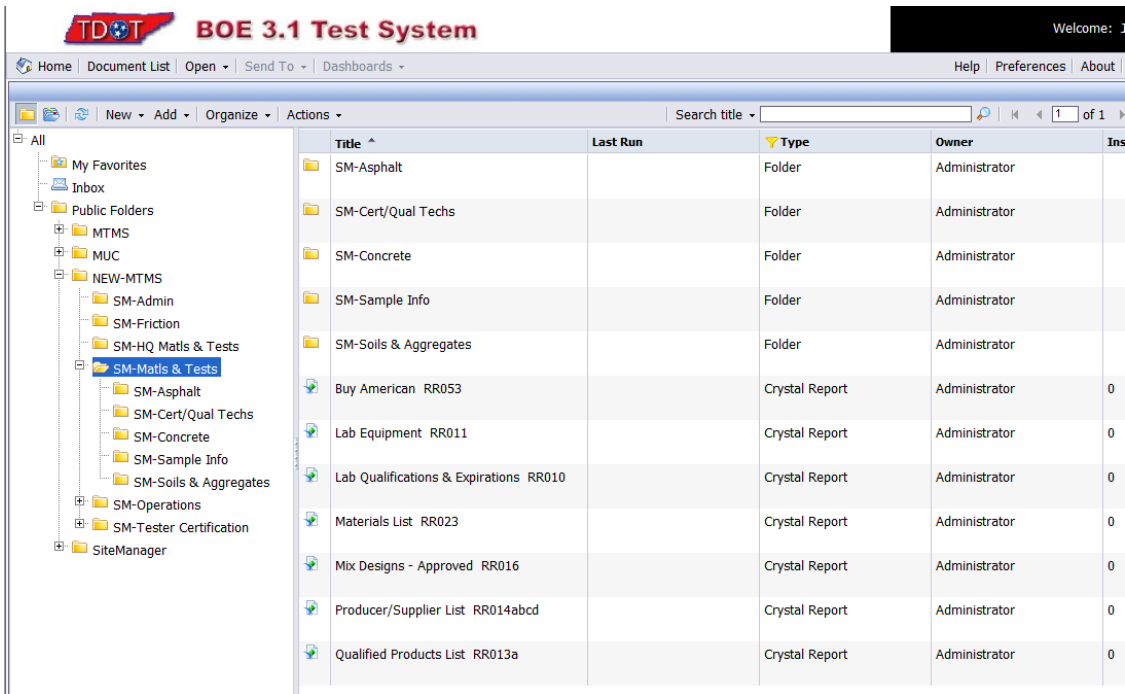


1. Thru transportal
2. In SiteManager. Navigation is Accessories/ System Attachments. Then select SM Reports:

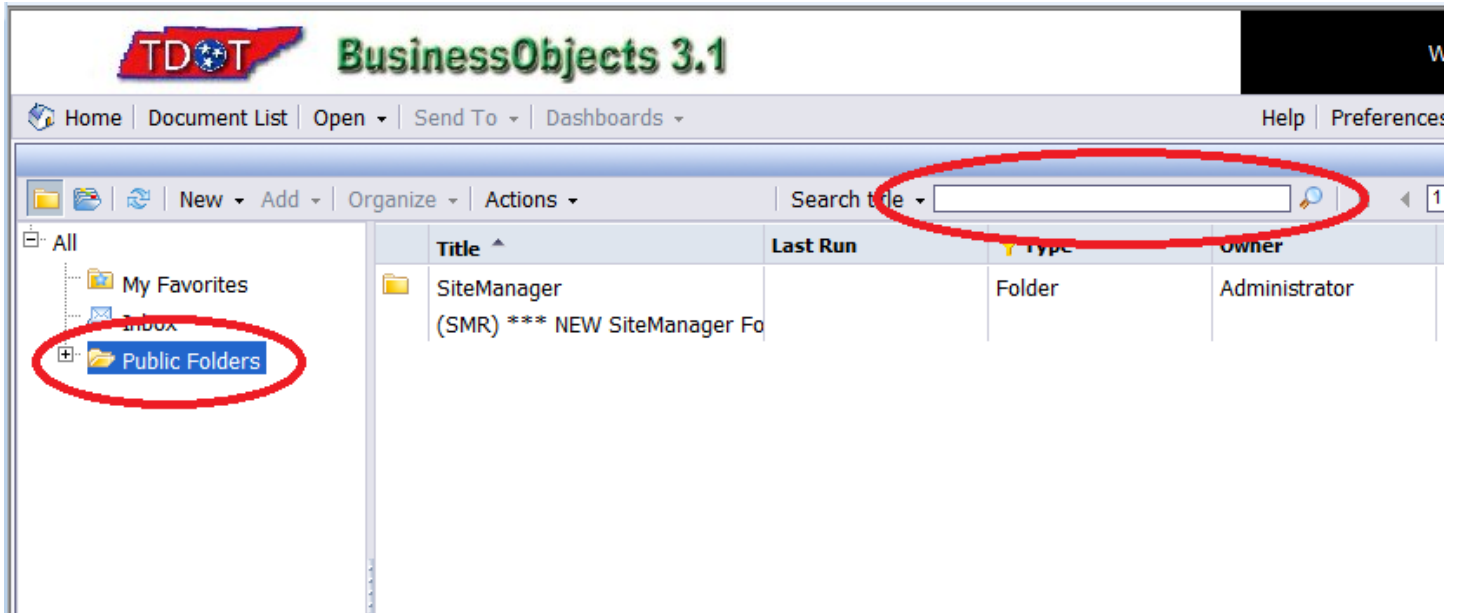


Link : <http://jj01sdcwa00012/InfoViewApp/logon.jsp>

This is BOE, it is where we can generate sitemanager reports:



The easiest way to find a report is to have the "Public Folders" folder selected. Then enter a word that is in the title or report number (RR005 for example) into the Search Title field.



You can select the criteria you want for your report. Some fields require a selection, others are optional.

View - Lab Qualifications & Expirations RR010

Enter prompt values.

LcoTypNM - GEOG_AREA_T/LcoTypNM - CD_ID_Addr/LcoTypNM - LAB_NM

Select Location:

Available Values:
1 - Region 1
2 - Region 2
3 - Region 3
4 - Region 4
5 - Out-of-State
6 - Headquarters

Selected Values:
6 - Headquarters

Select Lab Type:

Available Values:
TDOT - TDOT

Selected Values:
TDOT - TDOT

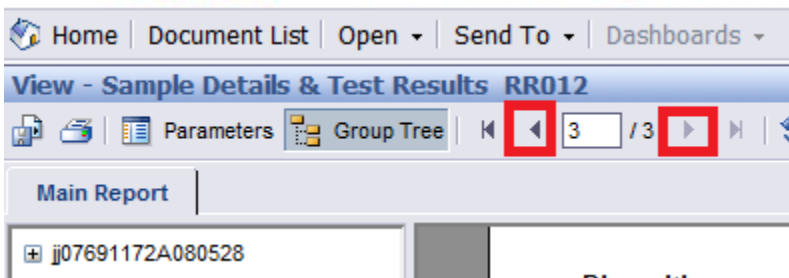
Select Lab Name:

Available Values:
TDOT Aggregate Lab
TDOT Asphalt - Emulsion Lab
TDOT Asphalt - Liquid Lab
TDOT Asphalt - Mix Design Lab
TDOT Cement Lab
TDOT Chemical Lab
TDOT Concrete Cylinder/Core Lab
TDOT Contractor Lab

Selected Values:
TDOT Asphalt - Liquid Lab
TDOT Asphalt - Mix Design Lab
TDOT Cement Lab
TDOT Chemical Lab
TDOT Concrete Cylinder/Core Lab
TDOT Physical Lab
TDOT Research and New Products Lab
TDOT Soils Lab

Discussions

Once a report has been generated, you will have to click arrows to go from one page to another:



Once the report is generated you can do several different things:

1. Export to a document you can save on your computer
2. Change the format to a different format like work excel or pdf (they are created to look best using pdf)

3. Click refresh to change criteria for report without starting over completely
4. Return to the folder you were in before selecting a report to generate.

The screenshot displays the TDOT BOE 3.1 Test System interface. At the top, the title bar reads "TDOT BOE 3.1 Test System". Below the title bar, there is a navigation menu with "Home", "Document List", "Open", "Send To", and "Dashboards". A "Main Report" tab is active. The main content area shows a report titled "View - Lab Qualifications & Expirations RR010". An "Export" dialog box is open, showing a list of file formats: Microsoft Word (97-2003) - Editable, Crystal Reports (RPT), PDF, Microsoft Excel (97-2003), Microsoft Excel (97-2003) Data-Only, Microsoft Word (97-2003), Microsoft Word (97-2003) - Editable, Rich Text Format (RTF), Separated Values (CSV), and XML. The "PDF" option is selected. The background report displays details for two labs: "TDOT Aggregate Lab" and "TDOT Aggregate Lab". A table of test methods is visible at the bottom right.

Test Method	Test Description
T104	T104 - Soundness of Aggr (Sodium Sulfate or Magnesium Sulf)
T11	T11 - Materials Finer Than 75-µm Sieve in Min Aggr by Wash
T176	T176 - Sand Equivalent Test
T19	T19 - Bulk Density (Unit Weight) and Voids in Aggregate

The data for reports is up to date. If I were to make a change in SiteManager, as soon as I saved it someone could generate a report and the data would be there.