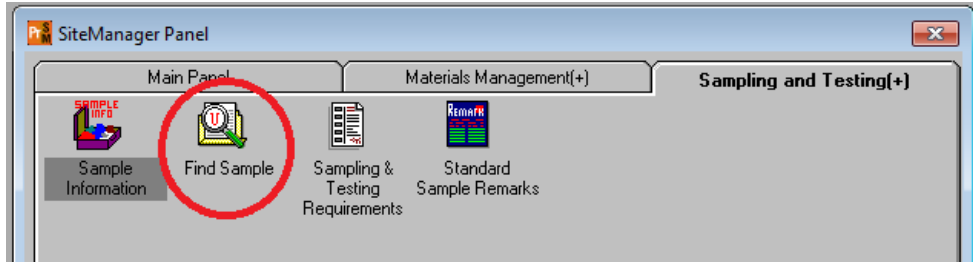
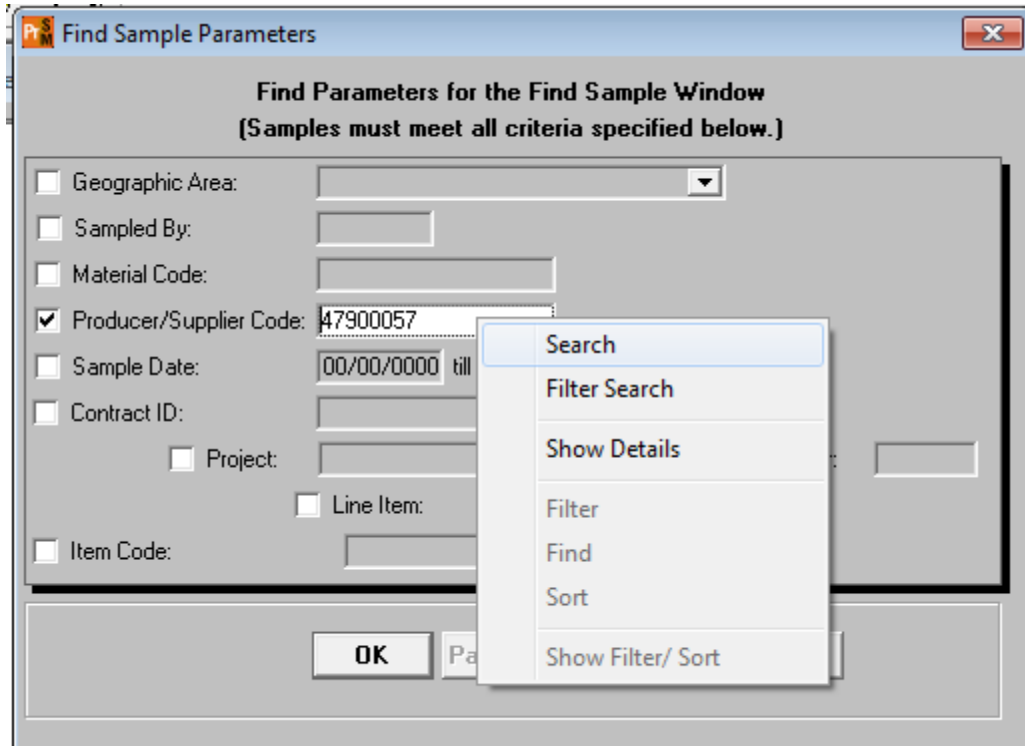


## Find Samples Window

Navigation: MAIN PANEL > MATERIALS MANAGEMENT > SAMPLING AND TESTING > FIND SAMPLE



Use the Find Sample Parameters window to search for sample records based on specific criteria. One or more selections can be made to narrow down the number of records shown.



### *Procedure*

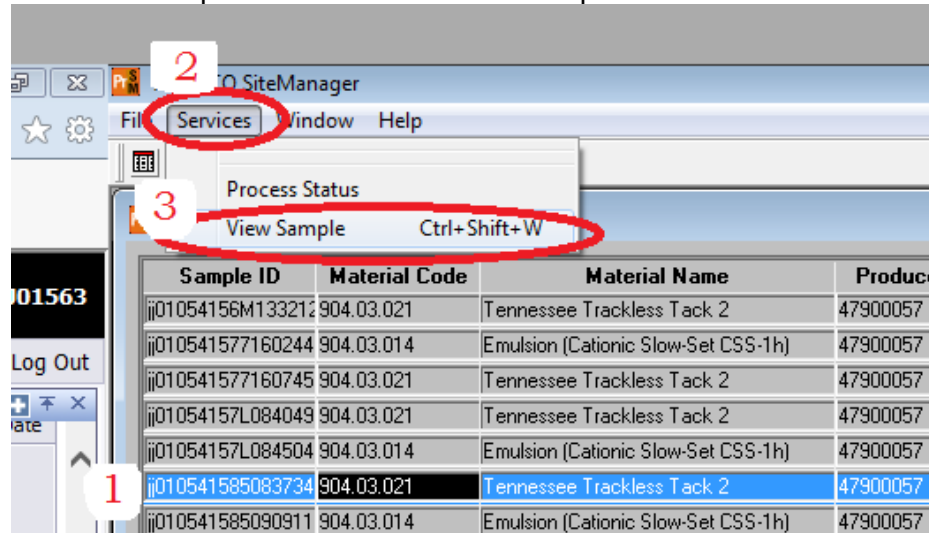
Use this window to search for samples based upon one or multiple criteria in SiteManager.

### *Step-by-Step Instruction*

To retrieve a list of sample records based upon criteria:

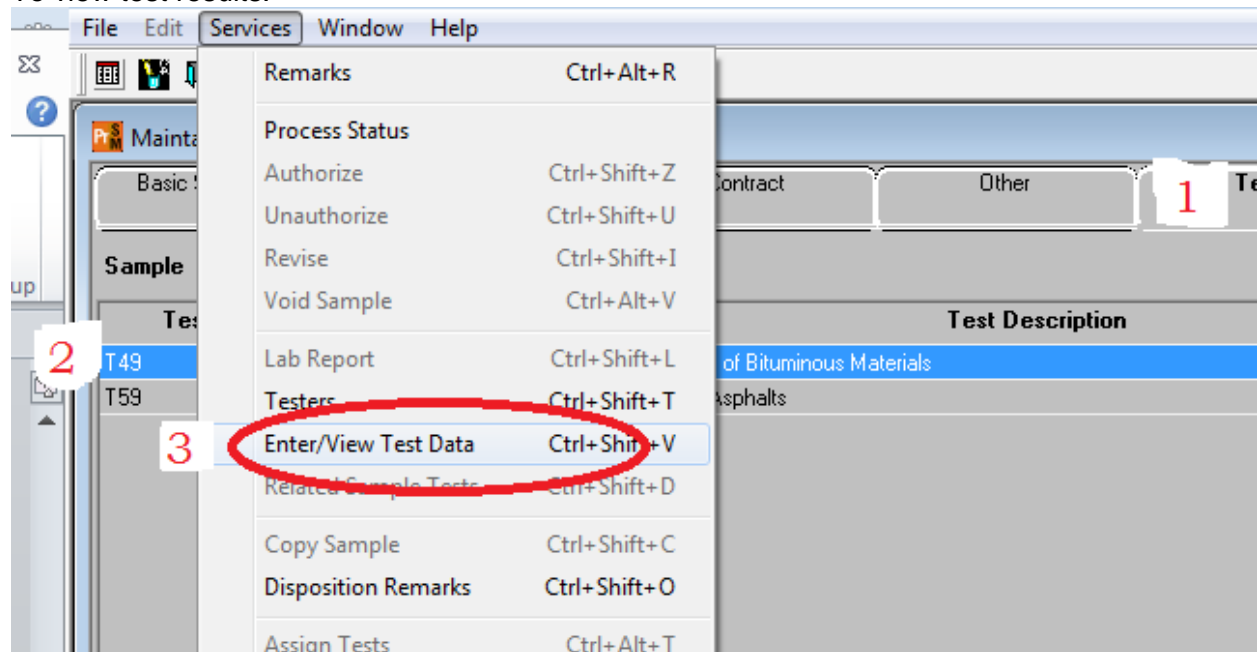
1. In the Find Sample Parameters window, select the check boxes for the desired criteria.
2. If necessary, select from the associated dropdown or search box.
3. Click the **OK** button. The system displays the Find Samples window

with a list of sample records that meet the desired criteria.  
To view a sample record from the Find Samples window:



1. Select the row for the desired sample record.
2. Select the **Services** menu,
3. select the **View Sample** choice.
4. The system displays the desired record in the Maintain Sample Information window.

To view test results:



1. Navigate to the Tests tab.
2. Select the test method you want to see.
3. From the Services menu select Enter/View Test Data

A new window will open. You can use the print button on the test template to get a printout of the test if needed

**Material Test Template Usage**

Sample ID :  Test Method :  Test Number:

Material Code :

Effective Date:

---

**T49** **Penetration of Bituminous Materials**

In Spec  
 Out of Spec  
 No Spec

Equipment

Test 1  0.1 mm

Test 2  0.1 mm

Test 3  0.1 mm      Min      Max

Average Penetration  0.1 mm           

Remarks

Version 1.3 (01-07-15)