

Current Status of the Pellissippi Parkway Extension Project

A number of activities that are part of the environmental review process for the Pellissippi Parkway Extension have been completed. Some activities are currently underway and several are upcoming.

Completed activities include:

- Initiation of the Environmental Impact Statement (EIS) and Scoping *April - July 2006*
- Public Alternatives Workshop *October 2007*
- Public Information Workshop *February 2008*
- Agency Concurrence on Purpose and Need and Study Area *February 2008*
- Development of refined alternatives *April - June 2008*
- Identification of alternatives to be evaluated in the Draft Environmental Impact Statement *August 2008*

Activities currently underway include:

- Conduct of environmental technical studies, including field studies *September - December 2008*

Upcoming activities include:

- Preparation and review of Draft Environmental Impact Statement (DEIS) *Winter and Spring 2009*
- Public hearing and comment period for DEIS *Summer 2009*

Public Alternatives Workshop and Public Information Workshop

A Public Alternatives Workshop was held on October 25, 2007 at the Heritage High School. The purpose of the meeting was to provide the public with an update of the project since the 2006 meetings and to solicit input on the refined purpose and need and potential project alternatives. Two hundred thirty-four comments were submitted during the comment period.

A Public Information Workshop was held on February 19, 2008 at the Heritage High School. The purpose of the meeting was to encourage public input on the alternatives to be studied, to provide information on the next steps in the EIS process, and to provide the public with an opportunity to ask local public officials about Blount County's growth plans and infrastructure. Approximately 550 people attended the meeting. Three hundred fifty-one comments were received during the comment period.

Refinement of Preliminary Alternatives and Corridors

Following the February 2008 public meeting, the range of alternatives and potential corridors was refined based on the results of preliminary environmental screening, consultation with resource agencies and application of performance criteria.

The criteria used to evaluate how well potential alternatives/corridors would accomplish the purpose and need of the project were:

- Ability to achieve the purpose and need for the project
 - Enhance regional transportation system linkages.
 - Improve circumferential mobility by providing travel options to the existing radial roadway network in Blount County, Maryville, and Alcoa.
 - Achieve acceptable traffic flows (level of service) on the existing local transportation network.

– Improve roadway safety on the existing roadway network, including the Maryville core.

- Support of community goals
- Ability to avoid, minimize or mitigate impacts to neighborhoods and businesses, including farmlands

The following alternatives/corridors were evaluated during the refinement process:

- No-Build Alternative
- Public Transit
- Transportation System Management Alternative (TSM)
- Extend Pellissippi Parkway from SR 33 to SR 73/US321
- Upgrade a Network of Existing Roadways

A map showing the refined alignments and corridors that were evaluated is on page 3.

Concurrence Reached on the Alternatives to be Evaluated in the Draft Environmental Impact Statement (DEIS)

Based on the results of the screening analysis, public input, and resource agency comments and concurrence, the following alternatives will be carried forward and evaluated in detail in the DEIS:

- No-Build
- Extend Pellissippi Parkway in one of two Build alignments
 - Alternative A (formerly Corridor A)
 - Alternative C (formerly Corridor C)
- Alternative D-Upgrade two-lane network (formerly Corridor D)

These alternatives are shown on the map on the insert.

Based on the results of the screening analysis, public input, and resource agency comments and concurrence, the following alternatives were dismissed from further consideration because they fail to substantially address the transportation needs and the purpose and need of the project:

- Public Transit
- Transportation System Management (TSM)
- Extend Pellissippi Parkway in Corridor B

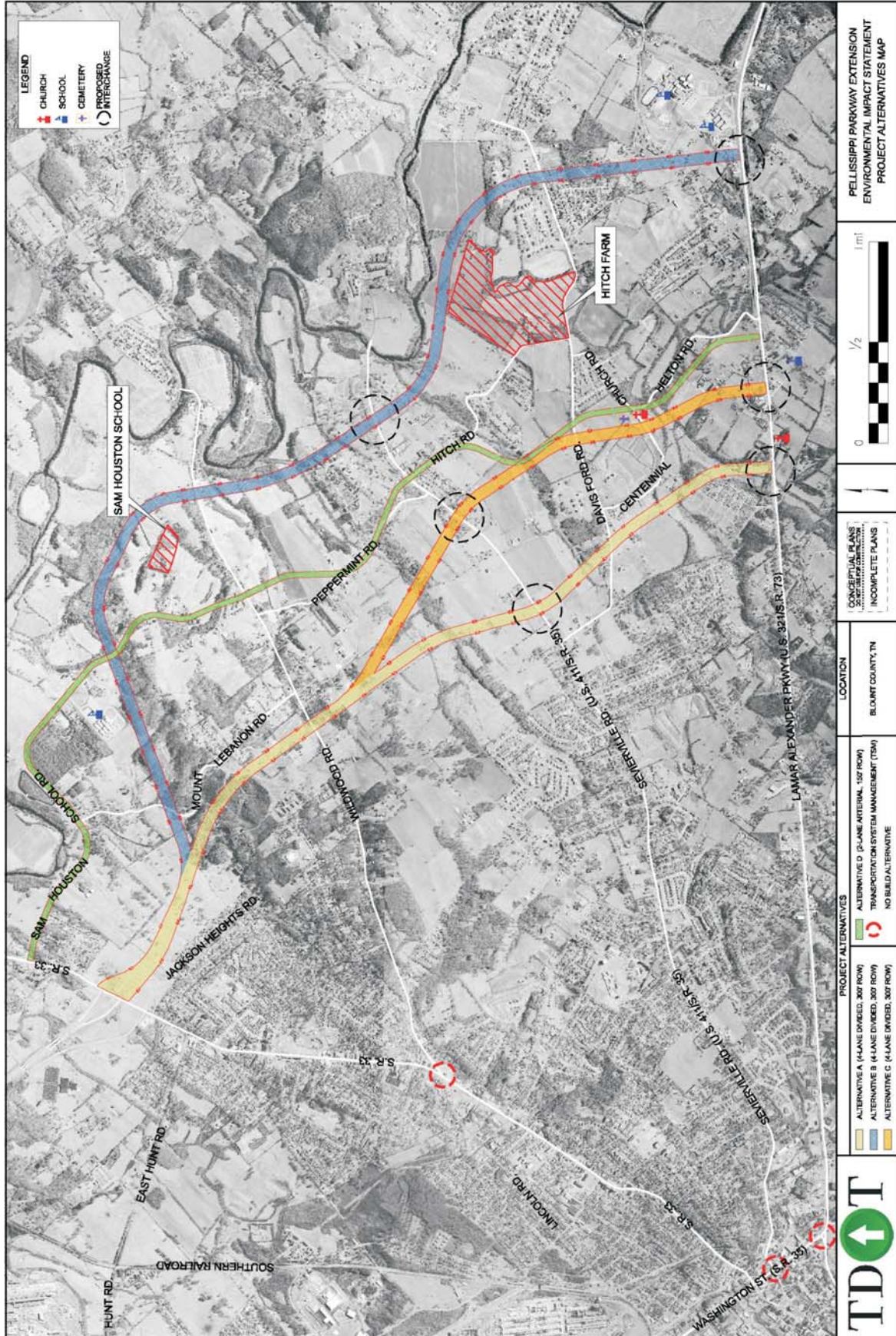
Project Field Studies

Beginning in September 2008 and extending through November 2008, field investigations will be conducted in the project area. At times during this period, individuals or crews of technical specialists will be in the project area, conducting a range of field investigations. Field data will be collected for the following subjects:

- Historic resources
- Archaeological resources
- Land use and community facilities
- Neighborhoods and businesses
- Relocations
- Environmental justice
- Indirect and cumulative impacts
- Air quality
- Noise
- Ecology (wetlands, streams and water quality, terrestrial and aquatic species)
- Floodplains
- Farmlands
- Soils and geology
- Hazardous materials

If you have any questions concerning the field studies, you should call Michael W. Russell, PE, TDOT Project Manager, at (865) 594-2334.

Refined Alternatives/Corridors



For More Information

Visit

www.tdot.state.tn.us/

- ◆ Click on Road Projects
- ◆ Click on East Tennessee
- ◆ Click on State Route 162/Pellissippi Parkway Extension (Blount)

Americans with Disabilities Act (ADA) Information

Persons with disabilities may request this information be prepared and supplied in alternate formats by calling Margaret Zeman Mahler at the Tennessee Department of Transportation ADA Accommodation Office at 615-741-4984 or TDD 615-253-8311.

Contact the TDOT Project Manager

Michael W. Russell, PE

TDOT
Project Management Division
7345 Region Lane
Knoxville, TN 37914
or
P.O. Box 58
Knoxville, TN 37901

(865) 594-2334
Mike.Russell@state.tn.us



**Tennessee Department of Transportation,
Authorization 401358, 600 copies.
March 2007. This public document was
promulgated at a cost of \$0.06 per copy.**

Tennessee Department of Transportation
Project Management Division
P.O. Box 58
Knoxville, TN 37901

Alternatives to be Evaluated in the DEIS

