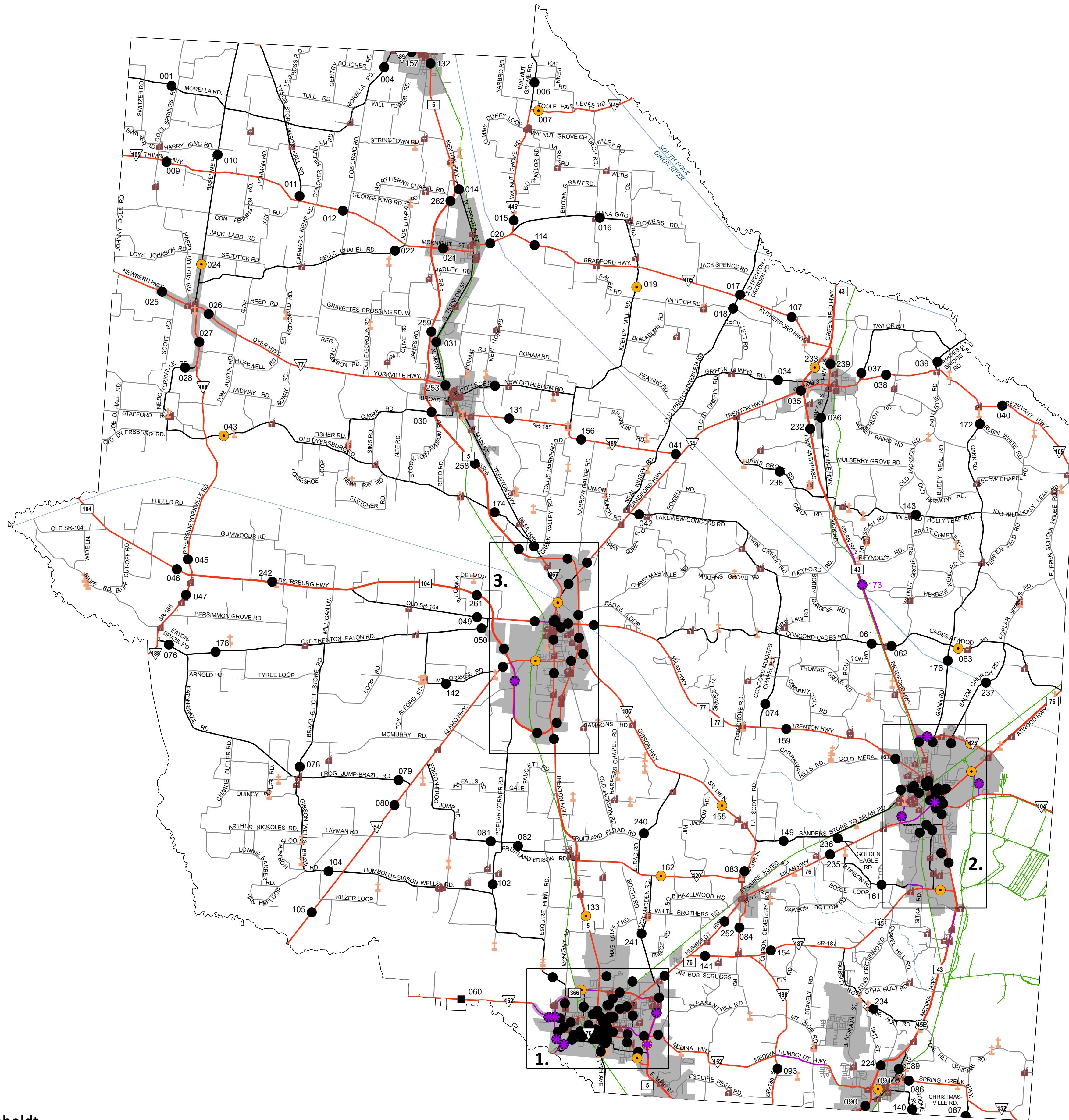


N



Legend

- HPMS Traffic Stations
- Class Count Traffic Stations
- CC Traffic Stations
- ATR Traffic Stations
- EDL Traffic Stations
- Churches
- Cemeteries
- HPMS Route
- Interstate
- State Route
- Functional Route
- Local Route
- Railroads
- Major Waterways
- Parks
- Municipal Boundary

Insets

- 1. Humboldt
- 2. Milan
- 3. Trenton

ATR Traffic Stations

060

CC Traffic Stations

001 016 027 039 061 083 105 149 174 238 262

004 017 028 040 062 084 107 154 176 239

006 018 030 041 063 087 114 155 178 240

007 019 031 042 074 088 131 156 224 241

009 020 032 043 076 089 132 157 232 242

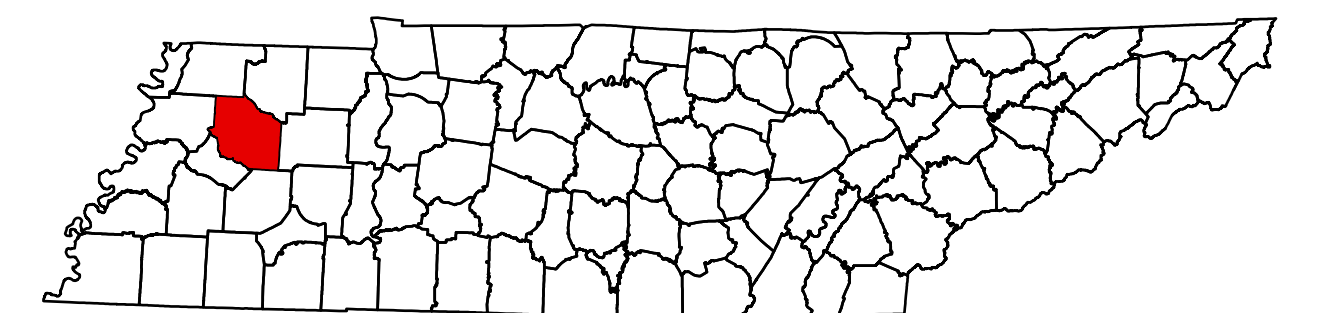
010 021 034 045 078 090 133 159 233 252

011 022 035 046 079 091 140 161 234 253

012 024 036 047 080 093 141 162 235 258

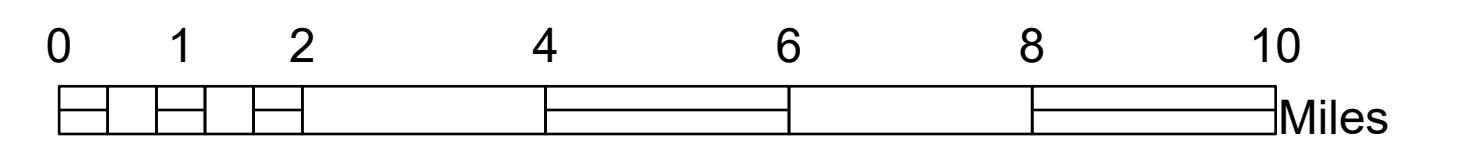
014 025 037 049 081 102 142 172 236 259

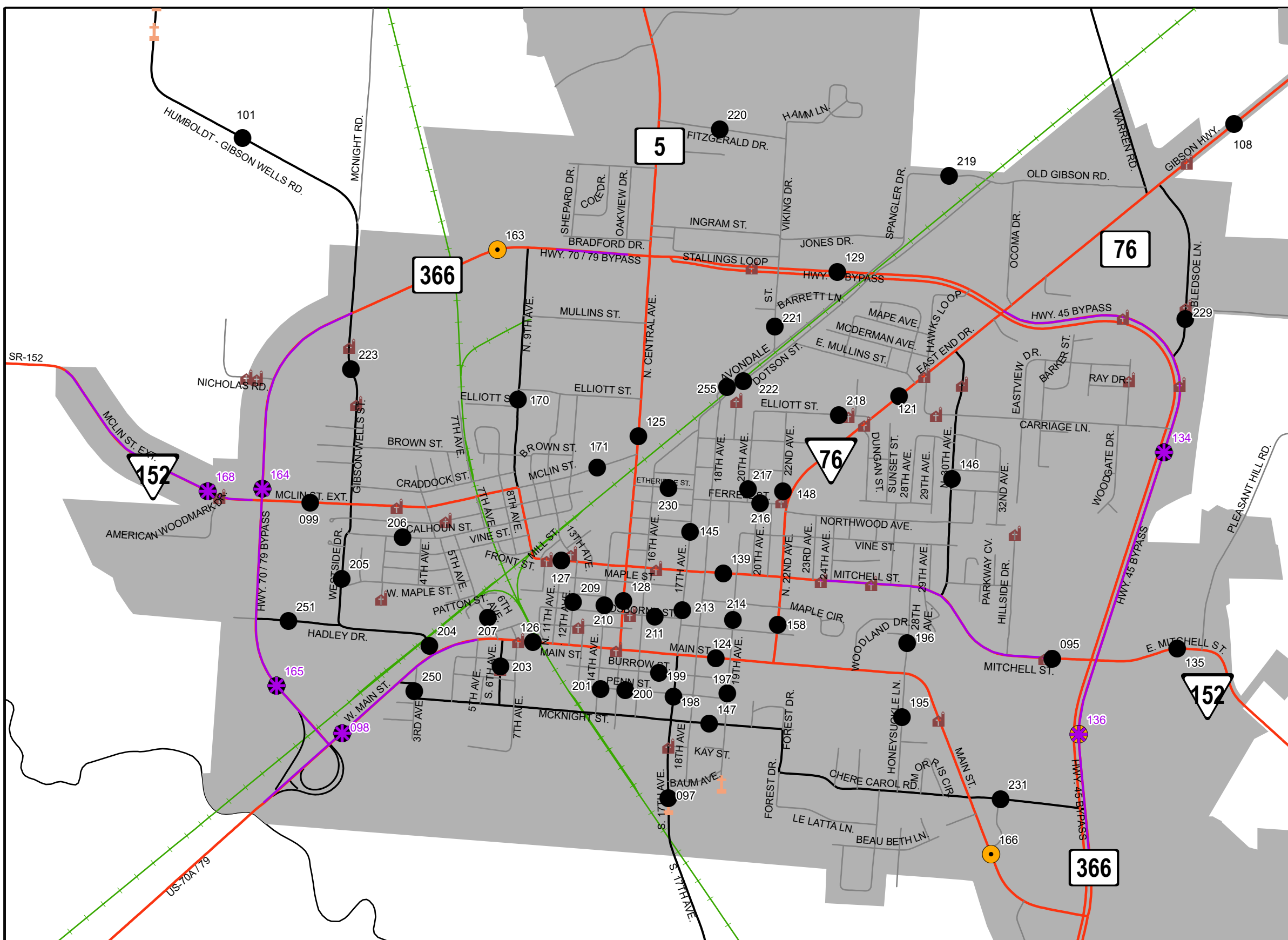
015 026 038 050 082 104 143 173 237 261



2023 Traffic Map
Gibson County
 Tennessee

Prepared by the
 Tennessee Department of Transportation
 Long Range Planning Division
 Office of Data Visualization





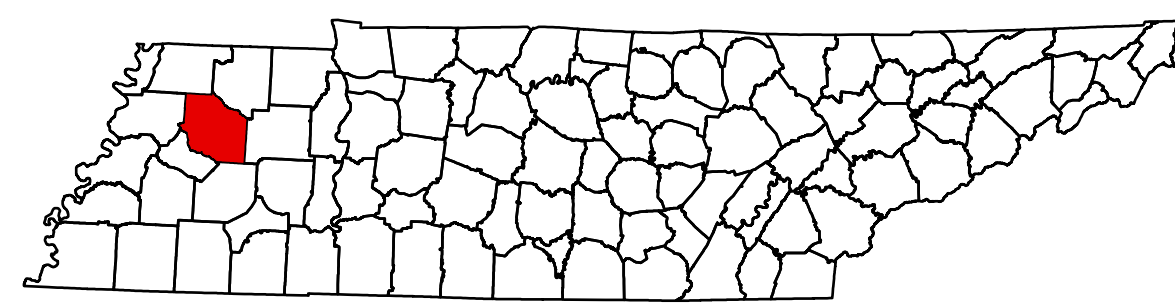
1. Humboldt

CC Traffic Stations

095	108	127	136	148	166	196	201	207	214	220	230
097	121	128	139	158	168	197	203	209	216	221	231
098	124	129	145	163	170	198	204	210	217	222	250
099	125	134	146	164	171	199	205	211	218	223	251
101	126	135	147	165	195	200	206	213	219	229	255

Legend

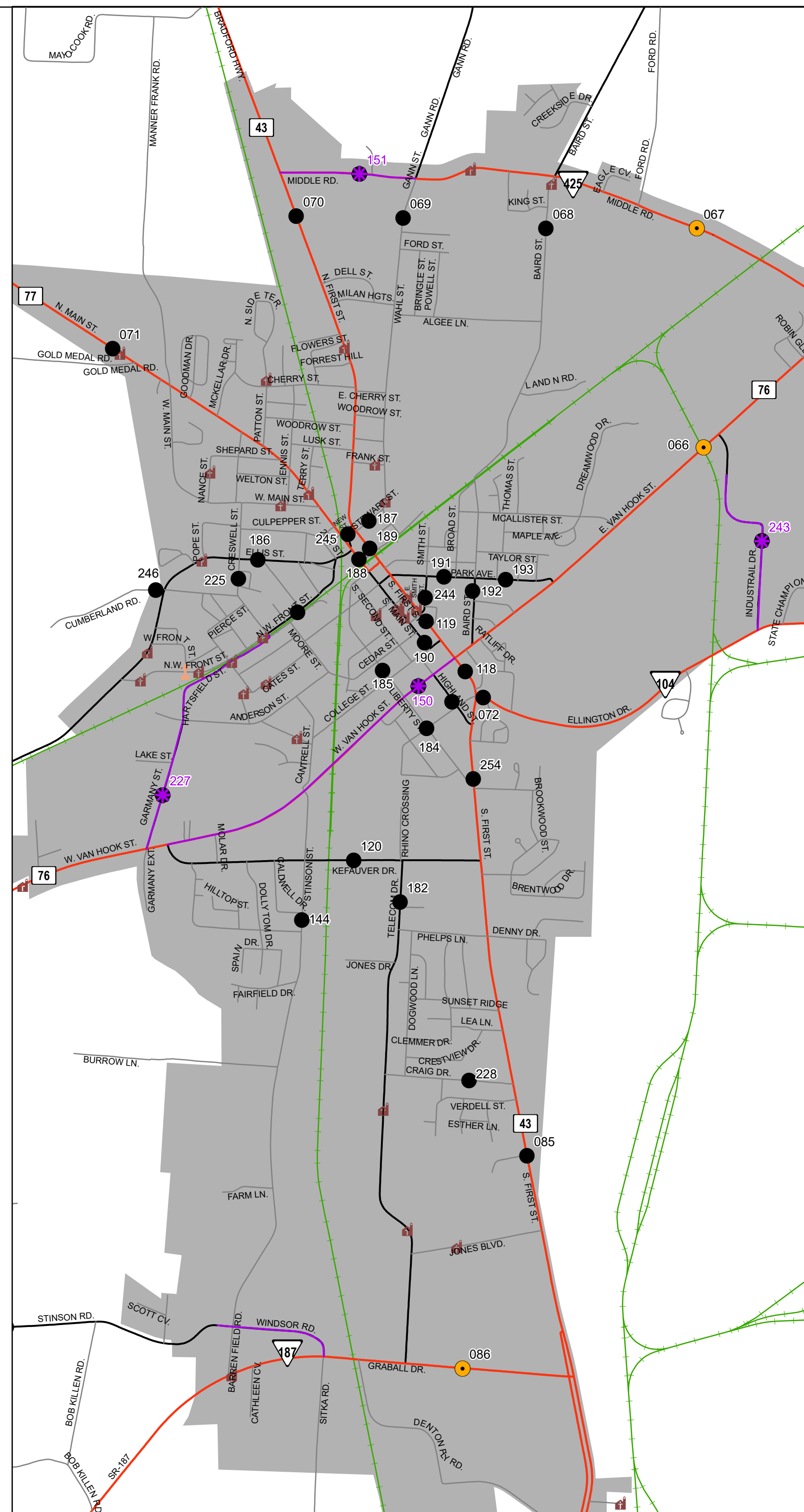
- HPMS Traffic Stations
- Class Count Traffic Stations
- CC Traffic Stations
- ATR Traffic Stations
- EDL Traffic Stations
- Churches
- Cemeteries
- HPMS Route
- Interstate
- State Route
- Functional Route
- Local Route
- Railroads
- Major Waterways
- Parks
- Municipal Boundary



2023 Traffic Map Gibson County Tennessee

Prepared by the
Tennessee Department of Transportation
Long Range Planning Division
Office of Data Visualization

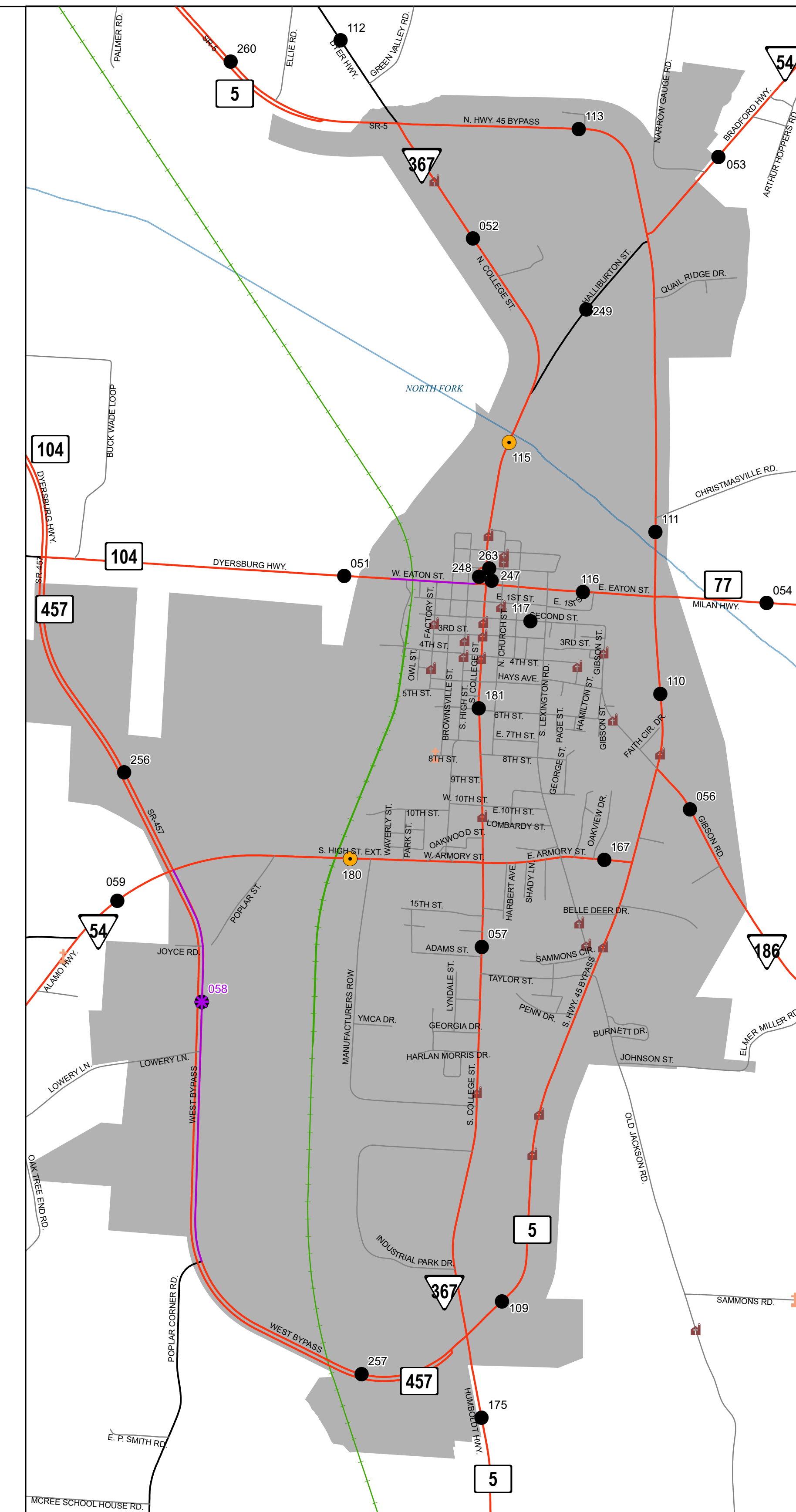
0 0.23 0.45 0.9 1.35 1.8 2.25 Miles



2. Milan

CC Traffic Stations

066	072	144	184	190	227	254
067	085	150	185	191	228	
068	086	151	186	192	243	
069	118	161	187	193	244	
070	119	182	188	225	245	
071	120	183	189	226	246	



3. Trenton

CC Traffic Stations

051	056	109	113	167	247	257
052	057	110	115	175	248	260
053	058	111	116	180	249	263
054	059	112	117	181	256	

Gibson County

1

Station #	AADT
001	124
004	248
006	125
007	383
009	193
010	264
011	442
012	423
014	836
015	526
016	119
017	242
018	167
019	273
020	1,435
021	1,212
022	451
024	436
025	2,125
026	1,751
027	444
028	143
030	539
031	1,514
032	409
034	339
035	2,532
036	1,076
037	102
038	1,637
039	273
040	417
041	622
042	365
043	272
045	424
046	1,678
047	552
049	229
050	503
051	1,826
052	1,743
053	3,072
054	4,305
056	2,213
057	3,966
058	1,540
059	2,640
060	1,889
061	1,059
062	923
063	721
066	8,087
067	862

Station #	AADT
068	857
069	1,278
070	7,950
071	4,151
072	3,271
074	564
076	270
078	172
079	427
080	1,069
081	601
082	748
083	2,108
084	1,149
085	19,316
086	2,382
087	1,341
088	2,540
089	1,251
090	15,763
091	2,210
093	961
095	2,433
097	1,700
098	1,530
099	384
101	436
102	59
104	171
105	1,077
107	603
108	6,924
109	7,204
110	12,338
111	10,097
112	3,076
113	6,545
114	856
115	2,497
116	2,978
117	320
118	18,804
119	13,194
120	2,831
121	6,202
124	5,090
125	5,877
126	2,887
127	1,852
128	3,214
129	17,514
131	1,030
132	4,015
133	10,152

Station #	AADT
134	11,508
135	2,232
136	12,278
139	2,754
140	417
141	1,992
142	156
143	312
144	1,740
145	1,102
146	1,059
147	577
148	369
149	1,169
150	4,681
151	962
154	1,938
155	1,423
156	989
157	1,599
158	3,725
159	2,929
161	596
162	1,022
163	5,432
164	4,648
165	2,411
166	3,038
167	7,071
168	2,190
170	837
171	1,047
172	250
173	6,348
174	130
175	8,860
176	928
178	124
180	3,331
181	1,833
182	3,246
183	2,298
184	2,210
185	2,031
186	703
187	1,269
188	7,013
189	10,347
190	2,217
191	953
192	1,969
193	540
195	346
196	486

