

# 5310 Vehicle Menu

---

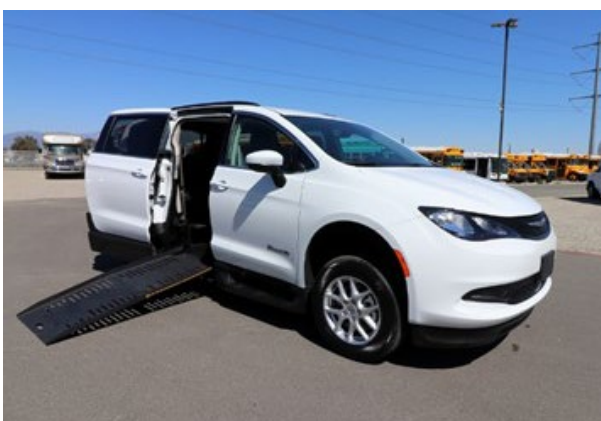
See below for brief descriptions of base vehicles available through this grant application. Detailed specifications are available by request. TDOT only provides funds for the cost of the base vehicle. Contact [Samantha.M.Deal@tn.gov](mailto:Samantha.M.Deal@tn.gov) for more information.

Vehicles pictured may vary slightly from currently available vehicles.

## ADA Lowered Floor Minivan

---

Pictured below: ADA Lowered Floor Minivan with Side Entry



- Lowered Floor Minivan seats either:
  - 4 Ambulatory, 1 Wheelchair (including co-pilot), or
  - 3 Ambulatory, 2 Wheelchair (replaces co-pilot)
- Van comes standard with manual ramp located at the side of the vehicle.
  - Ramp can be installed for rear entry at agency's request. **Agency will be responsible for any additional cost.**

## ADA Transit Van

---

Pictured below: Standard ADA Transit Van

- Transit Van seats up to 4 ambulatory and 2 wheelchair passengers.
- Van has an electric lift located at the rear of the vehicle.
  - Lift comes standard with 1000-pound capacity.
  - Lift can be installed at side entry at the request of the agency. **Agency will be responsible for any additional cost.**



## Cutaway Buses

---

Pictured below: 12+2 Cutaway Bus



- The 8+2 Cutaway Bus seats eight ambulatory and two non-ambulatory passengers. It is a narrow-body bus with an electric lift.
- The 10+2 Cutaway Bus seats ten ambulatory and two non-ambulatory passengers. It is a narrow-body bus with an electric lift.
- The 12+2 Cutaway Bus seats twelve ambulatory and two non-ambulatory passengers. It is a wide-body bus with an electric lift.
- The 16+2 Cutaway Bus seats sixteen ambulatory and two non-ambulatory passengers. It is a wide-body bus with an electric lift.
  - This bus requires a driver with a Commercial Driver's License (CDL) and a formal Drug and Alcohol program. **As a result, this vehicle is only recommended for agencies that currently employ a bus driver with a CDL and maintain a Drug and Alcohol program.**