

Dossett Lane Bridge Over CSX Railroad and Approaches

TDOT: 122683

Federal Project No: BRZ-9110(14)

State Project No.: 07LPLM-F3-033

Contract # 160033

Addendum #1

8/15/2024

Please be aware of the attached Questions and Answers document and the corresponding Addendum #1.

Also, For your bid to be considered please respond to this email acknowledging receipt of these changes.

The changes in the ADDENDUM include:

1. REVISED PLAN SHEETS 2A, 2F and 4B
 1. Revised "Estimated Quantity" Sheet
 2. Revised "ProposedLayout" Sheet
 3. Revised "Tabulated Quantities" Sheet

2. REVISED BID FORM (2 pages)- Bid Book pages 115 and 116 of 126.
 1. 705.06.06 Revised quantity.
 2. 705-06.10 Revised quantity.
 3. 705-06.11 Added bid item.
 4. 706-10.26 Added bid item.
 5. 805.01.03 Corrected bid item number on bid form.
 6. 805.12.01 Corrected bid item number on bid form.

Please replace the original sheets with these new sheets.

Dossett Lane Bridge Over CSX Railroad and Approaches

TDOT: 122683

Federal Project No: BRZ-9110(14)

State Project No.: 07LPLM-F3-033

Contract # 160033

BID QUESTIONS AND ANSWERS

8/15/2024

- 1) Q: In the past some bids have required the entire project manual to be returned with bid information included (bound) not just the separate bid forms. Will that be a requirement on this bid?

A: YES, THAT WILL BE A REQUIREMENT.

- 2) Q: It appears that a 6:1 slope is only present at each end of the bridge for approximately 7-10' which will accommodate the installation of the TL-2 Bridge protection. Can you please confirm that all other slopes will require long posts per TDOT standard drawing S-PL-6? Will consideration be given to changing and/or adding pay item to 705-06.02 W Beam Guardrail (Type 2) MASH, TL-3 (Long Posts) for all if not most of the guardrail?

A: YES, IT APPEARS THAT LONG POSTS WILL BE NEEDED FOR MOST OF THE GUARDRAIL. AN ADDENDUM WILL BE ISSUED CHANGING THE GUARDRAIL PAY ITEM FROM 705-06.01 to 705-06.02 W Beam Guardrail (Type 2) MASH, TL-3 (Long Posts).

- 3) Q: Will the radius guardrail be paid at 1.5 times the unit price of straight guardrail per TDOT specification 705.10 or can pay item 706-06.03 Radius Rail and/or 705-06.05 Radius Rail Long Post (6-9 Ft) be added to the bid items?

A: YES, IT IS INTENDED THAT THE RADIUS RAIL WILL BE PAID AT 1.5 TIMES THE UNIT PRICE OF STRAIGHT RAIL IN ACCORDANCE WITH THE SPECIFICATIONS; A SEPARATE BID ITEM WILL NOT BE ADDED FOR RADIUS RAIL.

4) Q: Currently, there is not a pay item for an in-line terminal at each of the radius locations. From our assessment, 3.0 each 705-06.11 Guardrail Terminal (In-Line) MASH, TL3 will be needed to comply with TDOT Standard Drawing S-GRA-4. Can you please verify? S-GRA-4 allows for a rounded end element at the terminating end of the radius into a private drive. Could the 2.0 Each Type 13 Terminals at these locations be replaced with 2.0 EA 706-10.26 Rounded End Element?

A: WE ARE ONLY AWARE OF TWO RADIUS LOCATIONS WHERE TDOT STANDARD DRAWING S-GRA-4 IS APPLICABLE. AT THOSE LOCATIONS, NEAR STATION 4+00 LEFT AND RIGHT, AN ADDENDUM WILL BE ISSUED TO CHANGE THE 2- EACH TYPE 13 TERMINALS TO 2- EACH ROUNDED END ELEMENTS. ADDITIONALLY 2- GUARDRAIL TERMINALS (IN-LINE) WILL BE ADDED TO THE MAINLINE TANGENT SECTION OF GUARDAIL AT THOSE LOCATIONS ONLY.

ADDENDUM #1 SHEET 1 OF 3

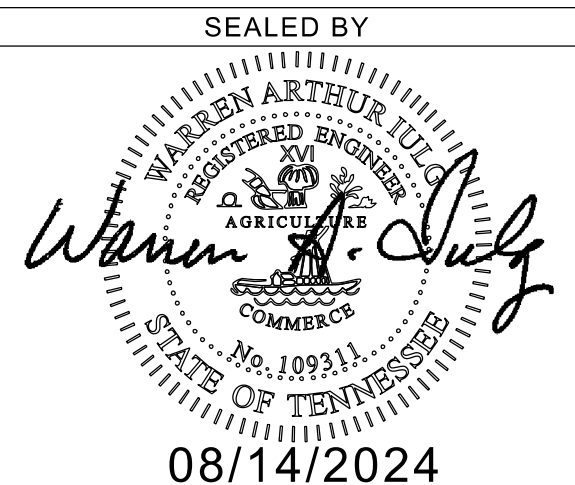
TYPE	YEAR	PROJECT NO.	SHEET NO.
CONST.	2024	BRZ-9110(14)	2A

ESTIMATED ROADWAY QUANTITIES

ITEM NO.	DESCRIPTION	UNIT	QUANTITY
105-01	CONSTRUCTION STAKES, LINES AND GRADES	LS	1
201-01	CLEARING AND GRUBBING	LS	1
203-06	WATER	M.G.	535
203-07	FURNISHING & SPREADING TOPSOIL	C.Y.	1657
(1) 203-10	EMBANKMENT (COMPACTED IN PLACE)	C.Y.	5272
204-08.01	BACKFILL MATERIAL (FLOWABLE FILL)	C.Y.	0.59
(2) 209-05	SEDIMENT REMOVAL	C.Y.	135
(2) 209-08.02	TEMPORARY SILT FENCE (WITH BACKING)	L.F.	2679
(2) 209-08.07	ROCK CHECK DAM	EACH	34
303-01	MINERAL AGGREGATE, TYPE A BASE, GRADING D	TON	2277
307-01.01	ASPHALT CONCRETE MIX (PG64-22) (BPMB-HM) GRADING A	TON	645
307-01.08	ASPHALT CONCRETE MIX (PG64-22) (BPMB-HM) GRADING B-M2	TON	418
402-01	BITUMINOUS MATERIAL FOR PRIME COAT (PC)	TON	6
403-01	BITUMINOUS MATERIAL FOR TACK COAT (TC)	TON	3
407-20.05	SAW CUTTING ASPHALT PAVEMENT	L.F.	209
411-01.10	ACS MIX(PG64-22) GRADING D	TON	256
(3) 607-37.01	15" CORRUGATED METAL PIPE CULVERT	L.F.	134
(3) 607-37.02	18" CORRUGATED METAL PIPE CULVERT	L.F.	66
(3) 607-40.04	CORRUGATED METAL PIPE ARCH (SIZE EQUIV. 24" ROUND)	L.F.	51
(4) 611-07.01	CLASS A CONCRETE (PIPE ENDWALLS)	C.Y.	5
(4) 611-07.02	STEEL BAR REINFORCEMENT (PIPE ENDWALLS)	LB.	140
611-07.30	15IN ENDWALL (SIDE DRAIN)	EACH	6
611-07.31	18IN ENDWALL (SIDE DRAIN)	EACH	1
611-07.55	18IN ENDWALL (CROSS DRAIN) 4:1	EACH	1
(2) (3) 621-03.02	18" TEMPORARY DRAINAGE PIPE	L.F.	40
705-04.10	EARTH PAD FOR GUARD RAIL END TREATMENT	EACH	1
705-06.02	W BEAM GR (TYPE 2) MASH TL3 (LONG POST)	L.F.	945
705-06.10	GR TERMINAL TRAILING END (TYPE 13) MASH TL3	EACH	1
705-06.11	GR TERMINAL (IN-LINE) MASH TL3	EACH	2
705-06.26	THRIE BEAM BRIDGE TRANSITION MASH TL-2	EACH	4
705-06.30	GR TERMINAL (ENERGY ABSORBING) MASH TL2	EACH	1
706-10.26	ROUNDED END ELEMENT	EACH	2
707-01.01	CHAIN-LINK FENCE (4-FOOT)	L.F.	175
707-01.02	END & CORNER POST ASSEMBLY(CHAIN-LINK FENCE 4')	EACH	6
707-01.03	GATE - CHAIN-LINK FENCE-4 FOOT (14' X 4')	EACH	1
707-03.01	STOCK FENCE	L.F.	610
707-03.02	END, BRACED LINE, CORNER POST ASSEMBLY(STOCK FENCE)	EACH	5
707-03.20	DRIVE GATE (STOCK FENCE) (20' X 4')	EACH	1
(5) 707-06.01	REMOVAL OF FENCE (4' CHAIN-LINK & WIRE WOVEN)	L.F.	888
(2) (6) 709-05.05	MACHINED RIP-RAP (CLASS A-3)	TON	225
(7) 709-05.06	MACHINED RIP-RAP (CLASS A-1)	TON	405
712-01	TRAFFIC CONTROL	LS	1
712-04.01	FLEXIBLE DRUMS (CHANNELIZING)	EACH	20
712-05.01	WARNING LIGHTS (TYPE A)	EACH	4
712-06	SIGNS (CONSTRUCTION)	S.F.	79
712-07.03	TEMPORARY BARRICADES (TYPE III)	L.F.	35
713-11.02	PERFORATED/KNOCKOUT SQUARE TUBE POST	LB.	265
(8) 713-16.01	CHANGEABLE MESSAGE SIGN UNIT	EACH	2
713-16.20	SIGNS (R1-1, STOP SIGN)	EACH	5
713-16.21	SIGNS (R2-1, SPEED LIMIT)	EACH	2
716-05.01	PAINTED PAVEMENT MARKING (4" LINE)	L.M.	0.76
716-05.05	PAINTED PAVEMENT MARKING (STOP LINE)	L.F.	93
717-01	MOBILIZATION	LS	1
(2) 740-10.03	GEOTEXTILE (TYPE III)(EROSION CONTROL)	S.Y.	200
(2) 740-11.03	TEMPORARY SEDIMENT TUBE 18IN	L.F.	2000
801-01	SEEDING (WITH MULCH)	UNIT	94
(2) 801-01.07	TEMPORARY SEEDING (WITH MULCH)	UNIT	204
801-02.01	CROWN VETCH MIXTURE (WITHOUT MULCH)	UNIT	34
(9) 801-03	WATER (SEEDING & SODDING)	M.G.	8
805-01.03	TURF REINFORCEMENT MAT (CLASS III)	S.Y.	235
805-12.01	EROSION CONTROL BLANKET (TYPE I)	S.Y.	2944

FOOT NOTES:

- SEE GRADING SPECIAL NOTES ON SHEET 2D
- SEE SUBSECTION 209.07 OF THE STANDARD SPECIFICATIONS FOR MAINTENANCE REPLACEMENT. ALL QUANTITIES ARE TO BE USED AS DIRECTED BY THE ENGINEER.
- BEDDING MATERIAL SHALL BE INCLUDED IN COST OF PIPE
- ACCOUNTS FOR 2 - 18" ENDWALLS AND 2 - 24" EQUIVALENT SKEWED ENDWALLS
- 4' CHAIN-LINK - 175 L.F., WIRE WOVEN - 713 L.F.
- THIS QUANTITY INCLUDES 80 TON FROM THE EPSC PLAN FOR CONSTRUCTION ENTRANCES AND 145 TON FOR SLOPE PROTECTION, SEE STANDARD DRAWING RD11-SA-1
- THIS QUANTITY INCLUDES 329 TON FOR ROADWAY DITCHES AND 76 TON FOR FLUMES, SEE STANDARD STRUCTURE DRAWING STD-10-3
- USE WHERE NECESSARY, CHANGEABLE MESSAGE SIGNS NOT SHOWN ON PLANS
- INCLUDES 8 THOUSAND GALLONS FOR EROSION PREVENTION AND SEDIMENT CONTROL



LOCALLY MANAGED PROJECT
CITY OF LAFOLLETTE

ESTIMATED
ROADWAY
QUANTITIES

ADDENDUM #1

SHEET 2 OF 3

TYPE	YEAR	PROJECT NO.	SHEET NO.
CONST.	2024	BRZ-9110(14)	2F

PROPOSED GUARDRAIL

SHEET NO.	LOCATION	SIDE		STATIONS		GUARDRAIL					TERMINAL ANCHORS				GUARDRAIL FOOTING		CABLE BARRIER		REMARKS			
						BRIDGE ENDS (26.896') 705-01.01 (L.F.)	METAL BEAM GUARD FENCE (L.F.) 705-01.04	BRIDGE ENDS LOW VOLUME (17.521') 705-06.26 EACH	MEDIAN DIVIDER		W BEAM GR (TYPE 2) MASH TL3 705-06.02 (L.F.)	ROUND END ELEMENT 706-10.26 (EACH)	TYPE 12 (21.875') (EACH) 705-04.02	TYPE 13 MASH TL3 (9.375') (EACH) 705-06.10	IN-LINE MASH TL3 (EACH) 705-06.11	TYPE 38 MASH TL3 (26.896') (EACH) 705-06.20	TYPE 21 MASH TL2 (21.875') (EACH) 705-06.30	CLASS A CONCRETE (ROADWAY) 604-01.01 (C.Y.)		STEEL BAR REINF. (ROADWAY) 604-01.02 (LB.)	LONG-ITUDINAL (L.F.) 705-80.01	TERMINAL (EACH) 705-80.18
									WITH RUB-RAIL 705-03.01 (L.F.)	AT CONC. BARRIER (26.896') 705-03.04 (L.F.)												
4B	DOSSETT LANE	X		4+02.92	7+66.50			1.000			360.00	1										
4B	DOSSETT LANE		X	3+58.00	7+66.50			1.000			435.00	1										
4B	DOSSETT LANE	X		9+70.82	10+51.92			1.000			112.50				1							
4B	DOSSETT LANE		X	9+66.69	10+10.02			1.000			37.50		1									
TOTALS								4.000			945.00	2		1	2		1					

PAVEMENT QUANTITIES

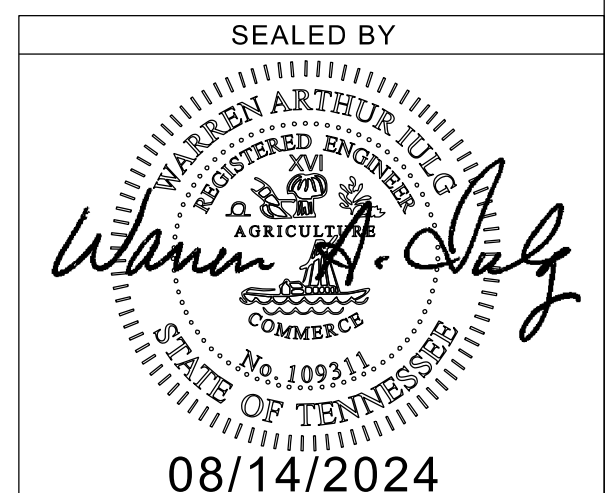
LOCATION (ROADWAY)	TYPE - GRADE - PAY ITEM (TON)											
	MINERAL AGG.	BITUMINOUS PLANT MIX BASE (HOT MIX)				TACK COAT	PRIME COAT	ASPHALTIC CONCRETE SURFACE (HOT MIX)				
		D	A	A-S	B-M			B-M2	D	E		
	303-01	307-01.01	307-01.20	307-01.07	307-01.08	403-01		402-01	411-01.10	411-01.07	411-xx.xx	411-xx.xx
DOSSETT LANE	2135.9	631.0			409.0	2.4		5.2	238.0			
DOSSETT LANE CONNECTOR	46.1	14.0			9.0	0.1		0.1	5.0			
PRIVATE DRIVE 0+88 LT	6.9								3.0			
PRIVATE DRIVE 1+12 LT	10.6								4.0			
PRIVATE DRIVE 1+31 RT	38.6											
PRIVATE DRIVE 1+78 LT	9.4											
PRIVATE DRIVE 2+06 LT	16.1								6.0			
FIELD ENTRANCE 3+50 RT	13.4											
TOTALS	2277.0	645.0			418.0	2.4		5.3	256.0			

ESTIMATED GRADING QUANTITIES

FROM STATION	TO STATION	ROAD & DRAINAGE EXC. (UNCL.) C.Y.	BORROW EXCAVATION		CHANNEL EXC. C.Y.	EXCESS EXC. WASTE C.Y.	EMB. C.Y.
			UNCL. - C.Y.	S. ROCK - C.Y.			
0+00.00	8+01.50	1979					4,596
9+30.50	11+50.00	1334					631
49+63.00	49+88.00						45
TOTALS		3313					5,272

FOOT NOTES:

(1) SEE GRADING SPECIAL NOTES ON SHEET 2D



LOCALLY MANAGED PROJECT
CITY OF LAFOLLETTE

TABULATED
QUANTITIES

07LPLM-F3-033
 BEGIN PROJ. BRZ-9110(14) CONST.
 STA. 0+50.00
 N 735484.8357
 E 2508474.6947

SAWCUT PAVEMENT
 PRIVATE DRIVE 0+88 LT - 9 L.F.
 PRIVATE DRIVE 1+12 LT - 14 L.F.
 PRIVATE DRIVE 2+06 LT - 15 L.F.

REMOVE PAVEMENT
 36.35' LT. OF STA. 3+02.76 TO
 34.09' LT. OF STA. 3+39.48
 17 S.Y. - INCIDENTAL TO
 ITEM 203-07

GUARDRAIL
 LT. STA. 4+02.92 - STA. 8+01.50
 LT. STA. 9+30.50 - STA. 10+51.92
 RT. STA. 3+58.00 - STA. 8+01.50
 RT. STA. 9+30.50 - STA. 10+10.02

07LPLM-F3-033
 END PROJ. BRZ-9110(14) CONST.
 STA. 11+50.00
 N 735052.0185
 E 2509306.4540

ADDENDUM #1

SHEET 3 OF 3

TYPE	YEAR	PROJECT NO.	SHEET NO.
R.O.W.	2022	BRZ-9110(14)	4B
CONST.	2024	BRZ-9110(14)	4B

CELL BDR2ND
 8/14/2024 4:50:25 PM
 G:\4627-Dossett Bridge\Working Drawings\4627 Phase 1 Design\Sheets\Plan\ProposedLayout.dgn

LEGEND	
SYMBOL	ITEM
XXXXXX	AREA OF OBLITERATION

DOSSETT LANE		DOSSETT LANE		DOSSETT LANE		DOSSETT LN CONNECTOR	
PI	STA.	PI	STA.	PI	STA.	PI	STA.
1+45.03	0+81.95	6+93.40	0+81.95	9+97.47	0+81.95	49+75.80	0+81.95
735421.29	1+69.44	734981.01	1+31.85	734954.43	1+31.85	735238.76	1+31.85
2508545.35	1+31.85	2508872.58	1+31.85	2509184.24	1+31.85	2508711.25	1+31.85
Δ 11' 24' 43" RT	1+31.85	Δ 48' 30' 11" LT	1+31.85	Δ 43' 29' 04" LT	1+31.85	Δ 11' 21' 14" RT	1+31.85
D 19' 05' 55"	1+31.85	D 35' 48' 36"	1+31.85	D 57' 17' 45"	1+31.85	D 57' 17' 45"	1+31.85
R 300.00	1+31.85	R 160.00	1+31.85	R 100.00	1+31.85	R 100.00	1+31.85
L 59.75	1+31.85	L 135.45	1+31.85	L 75.89	1+31.85	L 19.82	1+31.85
T 29.98	1+31.85	T 72.08	1+31.85	T 39.88	1+31.85	T 9.94	1+31.85
SE 0.036 FT/FT	1+31.85	SE 0.020 FT/FT	1+31.85	SE N/A	1+31.85	SE N/A	1+31.85
DESIGN SPEED 25 MPH	1+31.85	DESIGN SPEED 25 MPH	1+31.85	DESIGN SPEED 25 MPH	1+31.85	DESIGN SPEED 25 MPH	1+31.85
TRANS. LENGTH (IN) N/A FT.	1+31.85	TRANS. LENGTH (IN) 69 FT.	1+31.85	TRANS. LENGTH N/A	1+31.85	TRANS. LENGTH N/A	1+31.85
TRANS. LENGTH (OUT) 96 FT.	1+31.85	TRANS. LENGTH (OUT) 60 FT.	1+31.85	TRANS. LENGTH N/A	1+31.85	TRANS. LENGTH N/A	1+31.85

SIDE DRAIN TABULATION																		
STATION	LOCATION LT. RT.	DESCRIPTION	SURFACE WIDTH FT.	SKEW	RCP CLASS III OR CMP 14 GA OR PVC OR SRTRP OR HDPE OR PP (L.F.)								END TREATMENT		REMARKS			
					FILL HEIGHT ≤ 10 FT.				FILL HEIGHT > 10 FT. AND ≤ 16 FT.				INLET			OUTLET		
					15"	18"	24"	30"	36"	42"	18"	24"	30"	36"		42"	48"	TYPE
0+81.95	X	DUAL ENTRANCES	N/A		41									SAFETY	D-SEW-1A	SAFETY	D-SEW-1A	
1+69.44	X	DUAL ENTRANCES	N/A		51									SAFETY	D-SEW-1A	SAFETY	D-SEW-1A	
1+31.85	X	FIELD ENTRANCE	30		42									SAFETY	D-SEW-1A	SAFETY	D-SEW-1A	
3+50.00	X	FIELD ENTRANCE	12				30							D-PEW-1	SAFETY	D-SEW-1A	25LBS, 0.91 CY	
TOTALS								134	30									

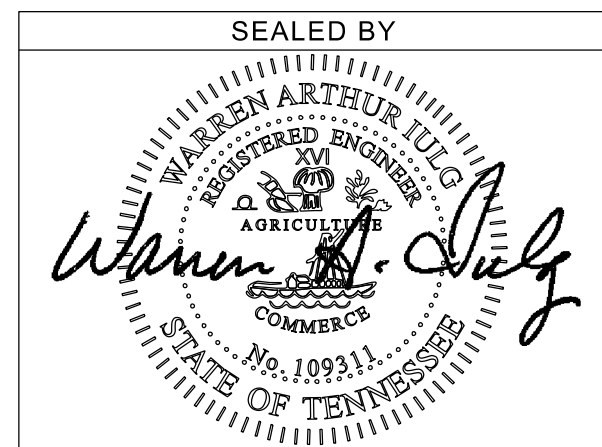
CROSS DRAIN TABULATION																	
STATION	SKEW	RCP CLASS III OR CMP 14 GA OR PVC OR SRTRP OR HDPE OR PP FILL HEIGHT ≤ 16 FT.								END TREATMENT		REMARKS					
		FILL HEIGHT > 16 FT. AND ≤ 24 FT.				FILL HEIGHT > 16 FT. AND ≤ 24 FT.				INLET			OUTLET				
		18"	24"	30"	36"	42"	48"	18"	24"	30"	36"		42"	48"	TYPE	DRAWING NO.	TYPE
2+25	30° RT.				51										D-PEW-1	D-PEW-1	NON-CIRC. SIZE EQ.24" RND, 2x(45LB, 1.45 CY)
49+76.56	36														D-PEW-1	D-PEW-1A	25LB, 0.91 CY - INCLUDE PIPE GRATE
TOTALS		36	51														

Pipe Tabulation For Private Drives, Business & Field Entrances

Pipe Tabulation For Local Roadways

DITCH CONSTRUCTION LT				
STA. TO STA.	SIZE/TYPE	CHANNEL LINING		
		TYPE	DEPTH	QUANTITY
0+50.00-0+74.20	V DITCH	TRM	1.0	22 SY
1+29.40-1+62.22	V DITCH	TRM	1.0	30 SY
2+27.46-2+36.00	V DITCH	TRM	1.0	8 SY
2+44.00-3+61.90	2' FB SPEC	CLASS A-1	1.0	77 T
4+10.17-5+80.00	2' FB SPEC	CLASS A-1	1.0	66 T
5+80.00-6+44.00	V DITCH	TRM	1.0	57 SY

DITCH CONSTRUCTION RT				
STA. TO STA.	SIZE/TYPE	CHANNEL LINING		
		TYPE	DEPTH	QUANTITY
0+50.00-1+04.11	V DITCH	TRM	1.0	48 SY
1+65.64-1+74.36	2' FB SPEC	TRM	1.0	10 SY
2+03.28-3+25.51	5' FB SPEC	CLASS A-1	1.0	95 T
3+67.67-6+00.00	2' FB SPEC	CLASS A-1	1.0	91 T
6+00.00-6+58.00	V DITCH	TRM	1.0	52 SY
10+55.95-10+64.24	V DITCH	TRM	1.0	8 SY



08/14/2024
 COORDINATES ARE NAD/83(1995),
 ARE DATUM ADJUSTED BY THE
 FACTOR OF 1.000 AND TIED TO
 THE TGRN. ALL ELEVATIONS ARE
 REFERENCED TO THE NAVD 1988.

LOCALLY MANAGED PROJECT
 CITY OF LAFOLLETTE

PROPOSED LAYOUT
 STA. 0+00 TO STA. 10+78.98
 SCALE: 1"= 50'



BID FORM

ROADWAY ITEMS

ITEM NO.	DESCRIPTION	UNIT	QTY.	UNIT PRICE	TOTAL PRICE
105-01	CONSTRUCTION STAKES, LINES AND GRADES	LS	1	\$	\$
201-01	CLEARING AND GRUBBING	LS	1	\$	\$
203-06	WATER	M.G.	535	\$	\$
203-07	FURNISHING & SPREADING TOPSOIL	C.Y.	1657	\$	\$
203-10	EMBANKMENT (COMPACTED IN PLACE)	C.Y.	5272	\$	\$
204-08.01	BACKFILL MATERIAL (FLOWABLE FILL)	C.Y.	0.59	\$	\$
209-05	SEDIMENT REMOVAL	C.Y.	135	\$	\$
209-08.02	TEMPORARY SILT FENCE (WITH BACKING)	L.F.	2679	\$	\$
209-08.07	ROCK CHECK DAM	EACH	34	\$	\$
303-01	MINERAL AGGREGATE, TYPE A BASE, GRADING D	TON	2277	\$	\$
307-01.01	ASPHALT CONCRETE MIX (PG64-22) (BPMB-HM) GRADING A	TON	645	\$	\$
307-01.08	ASPHALT CONCRETE MIX (PG64-22) (BPMB-HM) GRADING B-M2	TON	418	\$	\$
402-01	BITUMINOUS MATERIAL FOR PRIME COAT (PC)	TON	6	\$	\$
403-01	BITUMINOUS MATERIAL FOR TACK COAT (TC)	TON	3	\$	\$
407-20.05	SAW CUTTING ASPHALT PAVEMENT	L.F.	209	\$	\$
411-01.10	ACS MIX(PG64-22) GRADING D	TON	256	\$	\$
607-37.01	15" CORRUGATED METAL PIPE CULVERT	L.F.	134	\$	\$
607-37.02	18" CORRUGATED METAL PIPE CULVERT	L.F.	66	\$	\$
607-40.04	CORRUGATED METAL PIPE ARCH (SIZE EQUIV. 24" ROUND)	L.F.	51	\$	\$
611-07.01	CLASS A CONCRETE (PIPE ENDWALLS)	C.Y.	5	\$	\$
611-07.02	STEEL BAR REINFORCEMENT (PIPE ENDWALLS)	LB.	140	\$	\$
611-07.30	15IN ENDWALL (SIDE DRAIN)	EACH	6	\$	\$
611-07.31	18IN ENDWALL (SIDE DRAIN)	EACH	1	\$	\$
611-07.55	18IN ENDWALL (CROSS DRAIN) 4:1	EACH	1	\$	\$
621-03.02	18" TEMPORARY DRAINAGE PIPE	L.F.	40	\$	\$
705-04.10	EARTH PAD FOR GUARD RAIL END TREATMENT	EACH	1	\$	\$
705-06.02	W BEAM GR (TYPE 2) MASH TL3 (LONG POSTS) (REV 8-14-24)	L.F.	945	\$	\$
705-06.10	GR TERMINAL TRAILING END (TYPE 13) MASH TL3 (REV 8-14-24)	EACH	1	\$	\$
705-06.11	GR TERMINAL (IN-LINE) MASH TL3 (ADDED 8-14-24)	EACH	2	\$	\$
705-06.26	THRIE BEAM BRIDGE TRANSITION MASH TL-2	EACH	4	\$	\$
705-06.30	GR TERMINAL (ENERGY ABSORBING) MASH TL2	EACH	1	\$	\$
706-10.26	ROUNDED END ELEMENT (ADDED 8-14-24)	EACH	2	\$	\$
707-01.01	CHAIN-LINK FENCE (4-FOOT)	L.F.	175	\$	\$
707-01.02	END & CORNER POST ASSEMBLY(CHAIN-LINK FENCE 4')	EACH	6	\$	\$
707-01.03	GATE - CHAIN-LINK FENCE-4 FOOT (14' X 4')	EACH	1	\$	\$
707-03.01	STOCK FENCE	L.F.	610	\$	\$
707-03.02	END, BRACED LINE, CORNER POST ASSEMBLY(STOCK FENCE)	EACH	5	\$	\$
707-03.20	DRIVE GATE (STOCK FENCE) (20' X 4')	EACH	1	\$	\$
707-06.01	REMOVAL OF FENCE (4' CHAIN-LINK & WIRE WOVEN)	L.F.	888	\$	\$
709-05.05	MACHINED RIP-RAP (CLASS A-3)	TON	225	\$	\$
709-05.06	MACHINED RIP-RAP (CLASS A-1)	TON	405	\$	\$
712-01	TRAFFIC CONTROL	LS	1	\$	\$
712-04.01	FLEXIBLE DRUMS (CHANNELIZING)	EACH	20	\$	\$
712-05.01	WARNING LIGHTS (TYPE A)	EACH	4	\$	\$

ROADWAY ITEMS (cont.)

ITEM NO.	DESCRIPTION	UNIT	QTY.	UNIT PRICE	TOTAL PRICE
712-06	SIGNS (CONSTRUCTION)	S.F.	79	\$	\$
712-07.03	TEMPORARY BARRICADES (TYPE III)	L.F.	35	\$	\$
713-11.02	PERFORATED/KNOCKOUT SQUARE TUBE POST	LB.	265	\$	\$
713-16.01	CHANGEABLE MESSAGE SIGN UNIT	EACH	2	\$	\$
713-16.20	SIGNS (R1-1, STOP SIGN)	EACH	5	\$	\$
713-16.21	SIGNS (R2-1, SPEED LIMIT)	EACH	2	\$	\$
716-05.01	PAINTED PAVEMENT MARKING (4" LINE)	L.M.	0.76	\$	\$
716-05.05	PAINTED PAVEMENT MARKING (STOP LINE)	L.F.	93	\$	\$
717-01	MOBILIZATION	LS	1	\$	\$
740-10.03	GEOTEXTILE (TYPE III)(EROSION CONTROL)	S.Y.	200	\$	\$
740-11.03	TEMPORARY SEDIMENT TUBE 18IN	L.F.	2000	\$	\$
801-01	SEEDING (WITH MULCH)	UNIT	94	\$	\$
801-01.07	TEMPORARY SEEDING (WITH MULCH)	UNIT	204	\$	\$
801-02.01	CROWN VETCH MIXTURE (WITHOUT MULCH)	UNIT	34	\$	\$
801-03	WATER (SEEDING & SODDING)	M.G.	8	\$	\$
805-01.03	TURF REINFORCEMENT MAT (CLASS III) (REV 8-14-24)	S.Y.	235	\$	\$
805-12.01	EROSION CONTROL BLANKET (TYPE I) (REV 8-14-24)	S.Y.	2944	\$	\$

ROADWAY TOTAL: \$

BRIDGE ITEMS

ITEM NO.	DESCRIPTION	UNIT	QTY.	UNIT PRICE	TOTAL
204-02.01	DRY EXCAVATION (BRIDGES)	C.Y.	1168	\$	\$
204-04.01	ROCK EXCAVATION (BRIDGES)	C.Y.	267	\$	\$
204-14	CORE DRILLING FOR PILES (ROCK)	L.F.	190	\$	\$
204-15	CORE DRILLING FOR PILES (SOIL)	L.F.	79	\$	\$
303-01.02	GRANULAR BACKFILL (BRIDGES)	TON	1411	\$	\$
602-04.01	STEEL STRUCTURES (Est'd. wt.of structural steel = 139,982 LBS)	L.S.	1	\$	\$
604-02.03	EPOXY COATED REINFORCING STEEL	LB.	33190	\$	\$
604-03.01	CLASS 'A' CONCRETE (BRIDGES)	C.Y.	552	\$	\$
604-03.02	STEEL BAR REINFORCEMENT (BRIDGES)	LB.	65417	\$	\$
604-03.04	PAVEMENT@ BRIDGE ENDS	S.Y.	165	\$	\$
604-03.09	CLASS 'D' CONCRETE (BRIDGE DECK)	C.Y.	150	\$	\$
604-04.01	APPLIED TEXTURE FINISH (NEW STRUCTURES)	S.Y.	665	\$	\$
606-04.03	STEEL PILES (14 INCH)	L.F.	819	\$	\$
606-04.06	PILE TIPS (STEEL PILES 14 INCH)	EA.	50	\$	\$
620-05.01	CONCRETE PARAPET SINGLE SLOPE (STD-1-1SS)	L.F.	414	\$	\$
707-07.01	CHAIN-LINK FENCE (BRIDGES)	S.F.	1000	\$	\$
710-09.01	6" PERF. PIPE WITH VERTICAL DRAIN SYSTEM	L.F.	96	\$	\$

BRIDGE TOTAL: \$

TOTAL BID PRICE IN WORDS:

TOTAL BID PRICE: \$