

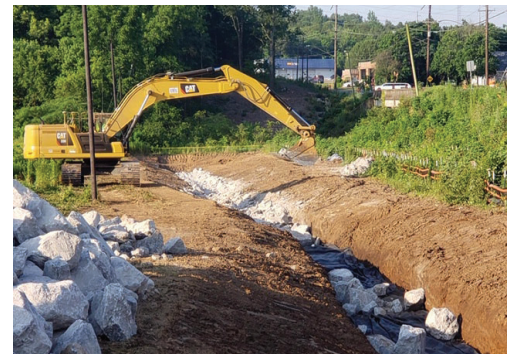
State Route 112 Widening from Briley Parkway to Ashland City Highway - Davidson County Quarterly Update

September 2020

Contractor: Civil Constructors
Project Supervisor: Greg Woerdeman

Progress Update

- Storm drains continue to be installed throughout the job.
- Water line relocation work continues.
- Sewer line relocation has started throughout Clarksville Pike.
- Grading work of the realignment of Ashland City Highway has been completed and sod has been placed.
- Blasting operations have been completed on the north end of Clarksville Highway (near Briley Parkway) and the slope has been graded.
- Temporary utility poles have place on Ashland City Highway and around the Whites Creek bridge.
- Special V-Ditch has been installed near the bridge.



Special V-ditch near Whites Creek.

Anticipated Schedule

- Expansion of the bridge over Whites Creek is expected to start in the next several weeks. **For safety purposes, the area of the greenway under the bridge will be closed.** The contractor currently estimates the closure will be needed for 18 months. Notice will be placed on the greenway prior to the closure.
- Work will continue on the new West Hamilton alignment.
- Crews will install new temporary pavement and a new traffic pattern near Briley Parkway headed south.
- Power relocation will continue, including installing temporary poles and relocating all utility power lines to these poles.



Catch basin installation near W. Hamilton.

Contacts:

Kathryn Schulte

TDOT Region 3
Community Relations Officer
(615) 350-4302 Office
Kathryn.Schulte@tn.gov

Greg Woerdeman

TDOT Project Supervisor
(615) 350-4461 Office
Greg.Woerdeman@tn.gov

For more information, please visit the project website at

<https://www.tn.gov/tdot/projects/region-3/state-route-112-clarksville-highway.html>

