

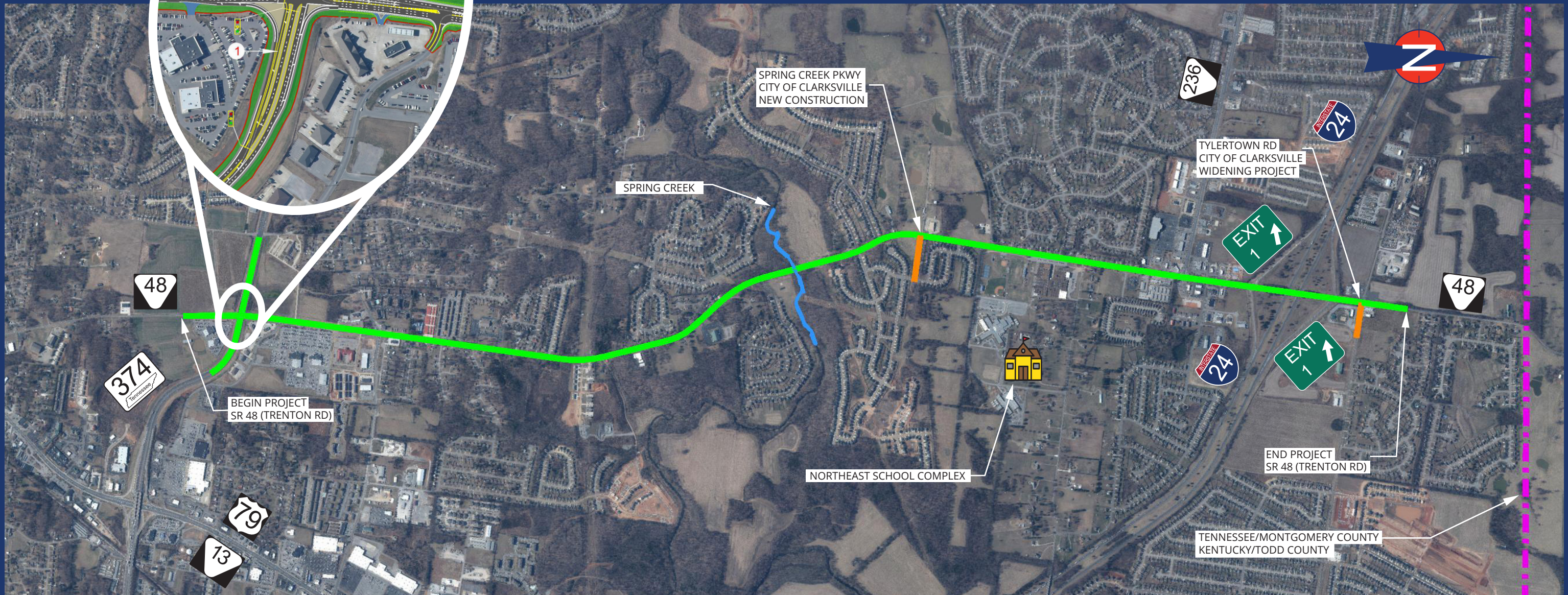
**The Unique and Innovative
CONTINUOUS FLOW INTERSECTION**

The proposed Continuous Flow Intersection (CFI) at 101st Airborne Division Pkwy and Trenton Road will be a TDOT first. There are over 30 CFI's across the United States which have had great success in both safety and efficiency.

A CFI provides the benefit moving left-turning vehicles across traffic to the left (opposite) side of the roadway ahead of the primary intersection through a separate signalized intersection, which provides for free-flow left turns at the primary intersection. The primary intersection is, in turn, much more efficient because left-turn green times are no longer needed and the through movements can function freely (green or red). Free-flow left turns at the primary intersection reduces the number of conflict points of turning left across traffic (potential for head-on and T-bone collisions).

The left-turning movements that benefit from a CFI are:

- 1 From SR-374 (101st Airborne Division Pkwy) Westbound to Southbound SR-48 (Trenton Rd)
- 2 From SR-374 (101st Airborne Division Pkwy) Eastbound to Northbound SR-48 (Trenton Rd)



STATE ROUTE 48 (TRENTON RD), MONTGOMERY COUNTY
FROM SOUTH OF STATE ROUTE 374 TO NORTH OF I-24

FEDERAL PROJECT NUMBER: STP-48(56)
STATE PROJECT NUMBER: 63014-0206-14
TDOT PIN: 123071.00

