

Public Informational Meeting

Davidson County SR 11 from North of Mill Creek
to Near SR 254 (Old Hickory Boulevard)

February 5, 2015

By The Tennessee Department of Transportation





Public Meeting Thursday 2/5/15

5:15 p.m. Presentation followed by Q&A

6:00 p.m.± Open House

- Staff available at displays to answer questions
- Complete comment cards and provide verbal statements to staff

7:00 p.m. Adjourn



Why are we here?

- Widening of SR 11 needed to accommodate increased traffic volumes
- Design and Environmental Features presented for review
- Explain process, changes to plans
- Understand your concerns
- Incorporate meeting comments



Project History ... Planning Phase

Identified project need through...

- 2004 Transportation Planning Report
- Complete Project Length:
SR 11 from Burkitt Road to near SR 254
- **Phase 1: SR 11 from North of Mill Creek to near SR 254**
- **Phase 2: SR 11 from Burkitt Road to North of Mill Creek**
- Why Phase?



Additions Since 2004 TPR

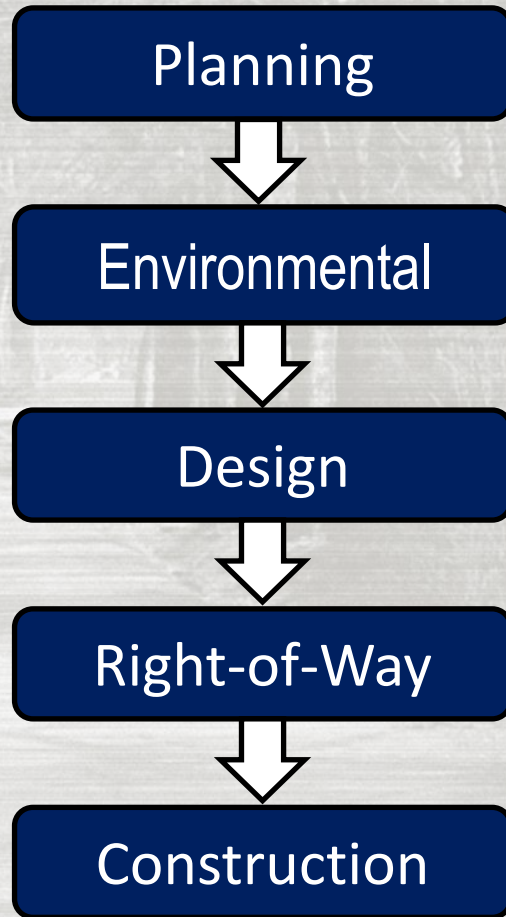
- 19 Commercial Developments
- 9 Residential Developments
- 18 Right Turn Lanes Added at Side Roads
- 12 Left Turn Lanes Added at Side Roads
- Lighting

Project Location Map

Phase 1 and 2 – 4.4 Miles, Phase 1 -2.4 Miles, Phase 2 -2 Miles



Project Status



Environmental and Design phases are currently active.



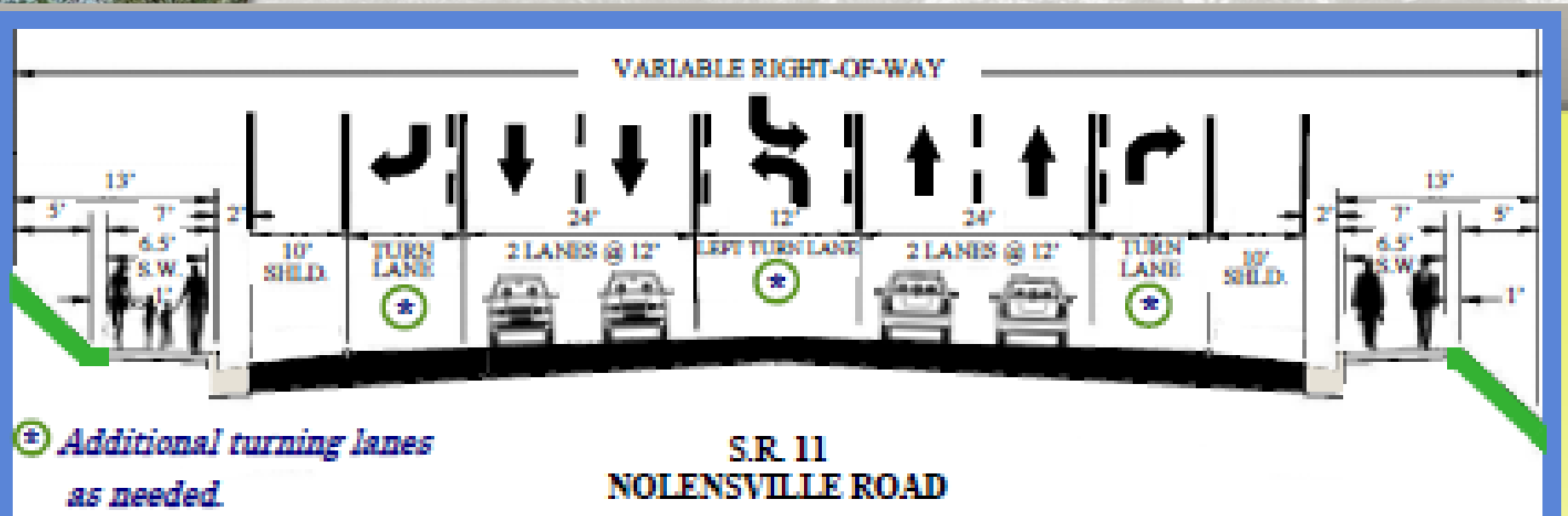
Proposed Project

- 5 Lane Curb and Gutter Typical Section
 - 5' Sidewalks
 - Median Turn Lanes
 - Right Turn Lanes
 - Variable ROW
 - Natural Stream Design
 - Bicycle Lanes
- Improved Safety

Project Design Details

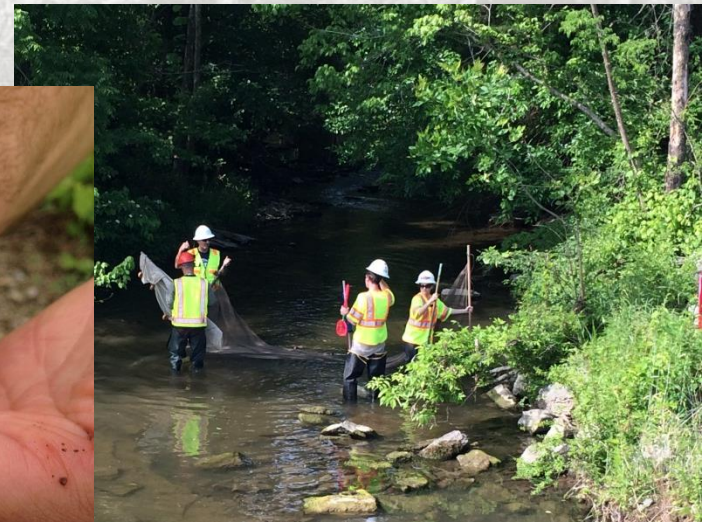
- Enhance mobility
- Improve roadway safety
- Support economic development
- Improve existing roadway deficiencies
- Environmental coordination
- Geotechnical coordination

Typical Section



Environmental Features

- Nashville Crayfish Species



Natural Stream Design

- Year 2 Buffer



- Year 4 Buffer



Natural Stream Design

- Rock Steps



- Riffle



Preliminary Project Right of Way Cost Estimate

- Phase 1 - \$24 Million Preliminary Estimate
 - 139 Tracts
 - 9 Potential Relocations
 - Side Road Improvements at the following Locations:

- Bluff Road
- Lenox Creekside Dr.
- Holt Road
- Sugar Valley Dr.
- Hills Chapel Road
- Brooklawn Dr.
- Shane Point Place
- Bienville Dr.
- Persia Way
- Porter House Road
- Bradford Hills/Lenox Village
- Lords Chapel Dr.
- Kinhawk Dr.
- Barnes Road
- Brentwood Highlands Dr.
- Shadow Glen Dr.





ROW Acquisition Process

- Staff Available to Answer your Concerns
- Appraisals and Acquisition
- Relocations
- ROW Manager here to answer your questions

Next Steps

- 4th Quarter 2015
 - Right-of-way plans are updated and completed
 - Geotechnical work is completed
 - Environmental work is completed
- 1st Quarter 2016
 - Right-of-way acquisition begins



Meeting Summary

- Representatives from Design, Environmental and ROW
- Location of displays
- Environmental information
- ROW acquisition and relocation information
- Identification of TDOT representatives

Comments

REMEMBER...

Your comments are very important to us!

How to Comment:

- Participate in the question-and-answer session
- Fill out a comment card tonight
- Take a comment card with you and mail it in
- Mail in a letter with your comments
- Tell us your concerns
- Comments will be included in the official record

Contact

For more information, please contact;

Ms. Lori Lange, Director

TDOT, Region 3 Project Development

(615)350-4391

Lori.Lange@tn.gov

Ms. Jennifer Lloyd, Director

TDOT Roadway Design Division

(615)741-2221

Jennifer.Lloyd@tn.gov



Question/Answer Session;

- Answer broad project questions
- Clarify presentation
- Identify appropriate staff resources

Break Out Session;

- Answer specific project questions
- Assist with property owner questions
- Identify your specific concerns

Thank you!