



**WIDENING SR-96 (MURFREESBORO ROAD) FROM EAST OF  
SR-252 (WILSON PIKE) TO I-840  
WILLIAMSON COUNTY  
DESIGN PUBLIC MEETING**

October 24, 2019

# Welcome & Thank You for Attending

## **Introduction**

of TDOT Representatives

## **Project Presentation**

Why, Where,  
What, How, & When

## **Materials**

Handouts, Plans, &  
Displays

## **Breakout Session**

for Q & A

## **Comments & Feedback**

- Court Reporter Available
- Comments Cards

# Tonight's Schedule

**6:15 p.m.** **Formal Presentation**

**7:00 p.m.** **Question and Answer**

## **Open House**

- Staff located at displays to answer questions

## **Gather Feedback**

- Complete comment cards and/or provide verbal comments to court reporter

**8:00 p.m.** **Adjourn**

# Purpose of Meeting

- Discuss proposed SR-96 widening
- Provide preliminary plans for public review
- Receive input from the public
  - Comment cards
  - Court reporter
- Answer questions and address concerns

# Purpose and Need of the Project

The primary purpose of the project is to improve local and regional mobility by improving traffic flow on SR-96 between the cities of Franklin and Murfreesboro

This project will address safety, traffic congestion, and geometric deficiencies

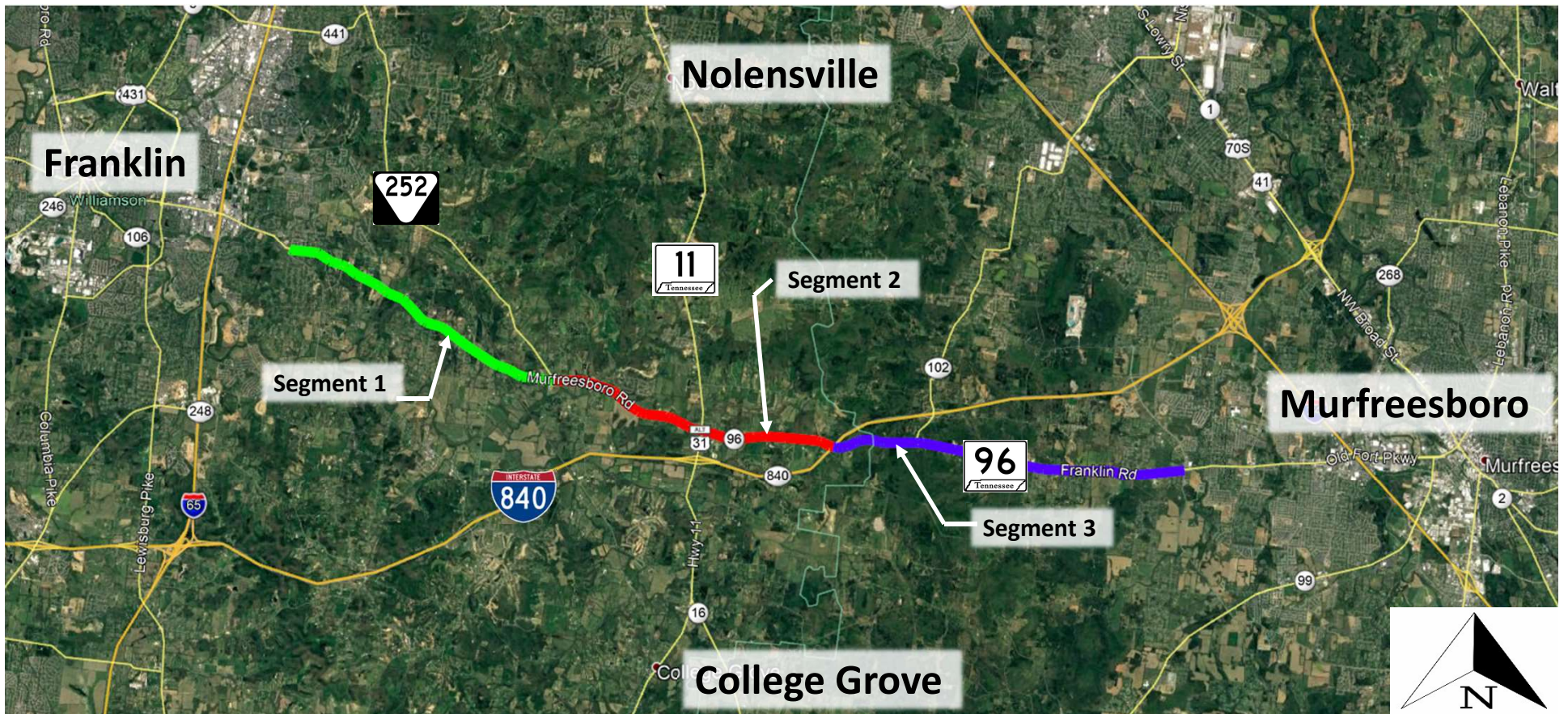
- ✓ Safety
- ✓ Transportation Demand
- ✓ System Linkage
- ✓ Traffic and Capacity
- ✓ Roadway Deficiencies

# History of the Project

- 1995 – Original planning document completed
- 1998 – Initial Public Meeting
- 2001 – Corridor and Design Public Hearing
- 2005 – NEPA Hearings held
- 2001 – 2012 Construction of SR-840 through the area
- 2017 – Passage of Improve Act
- Corridor divided into 3 segments
  - Design updated to 5 lane roadway
    - Segment 1: From East of Arno Road to East of SR-252
    - **Segment 2:** From East of SR-252 to I-840
    - Segment 3: From I-840 to Veterans Parkway

# Project Location Map - SR 96 Proposed Corridor

- Full corridor from Franklin to Murfreesboro planned – split into 3 segments

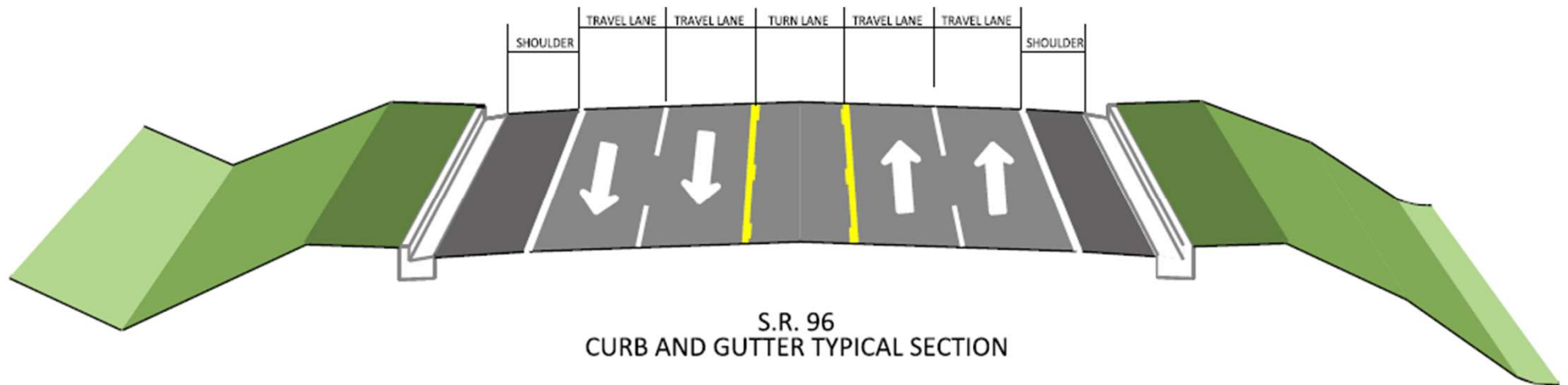
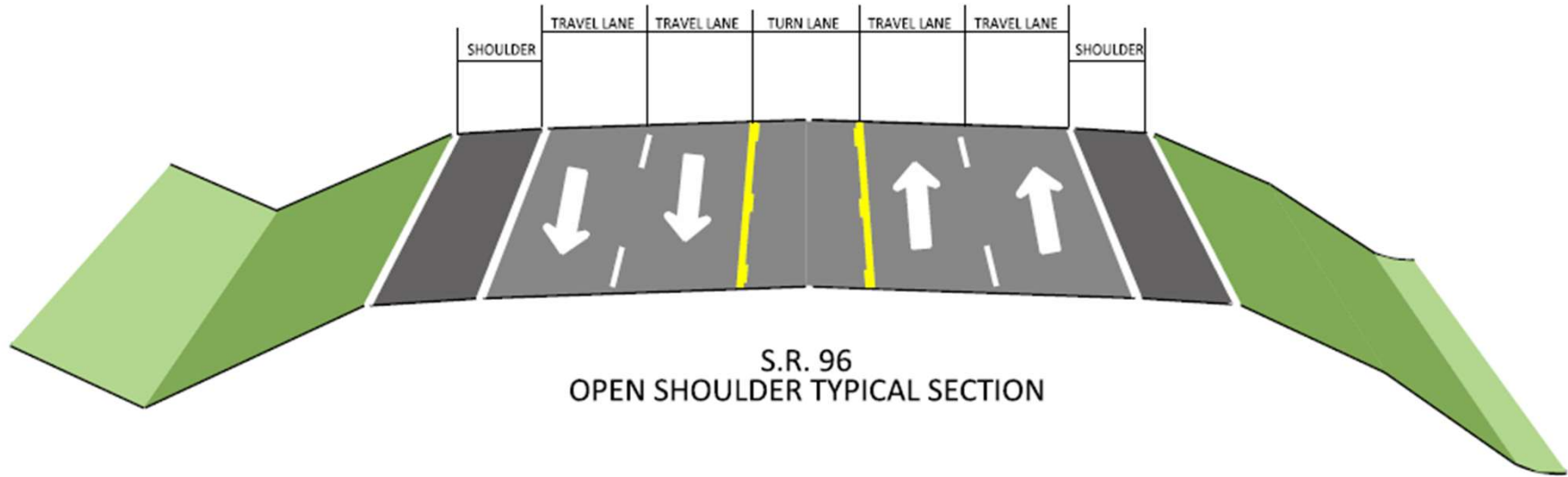


# Proposed Improvements

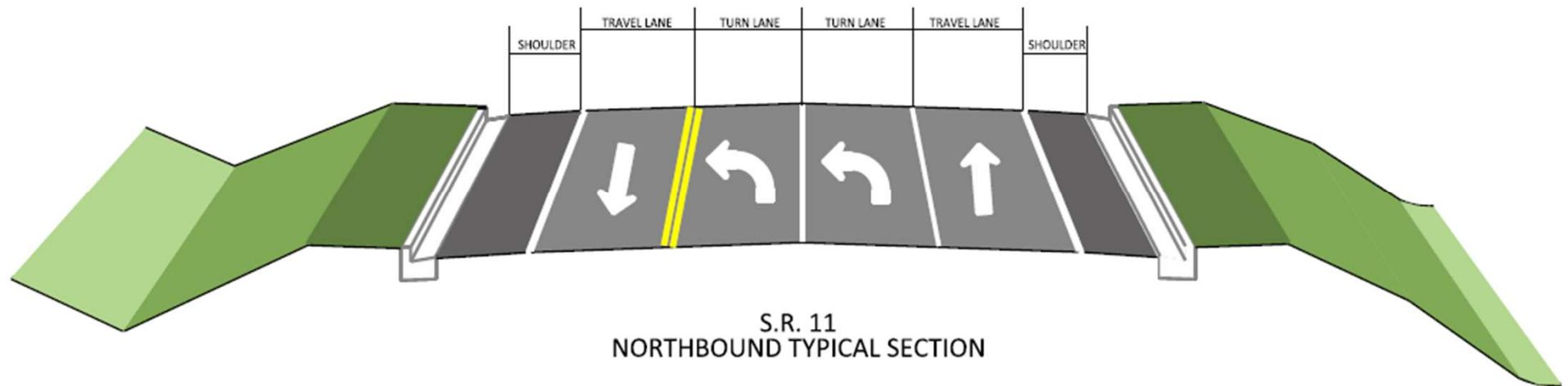
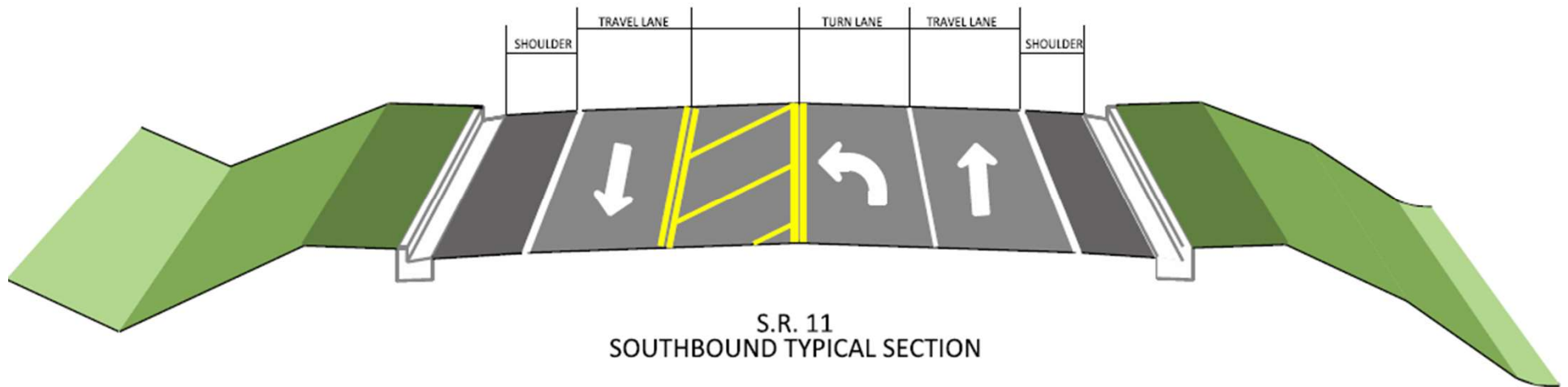
- Widening Existing SR-96 to rural five lane typical section
  - Transitions to urban/curb and gutter section through Triune area – approx. 0.75 miles
- Widen SR-11 for approx. 0.65 miles to provide turn lanes at the intersection with SR-96



# Typical Sections: Proposed SR-96



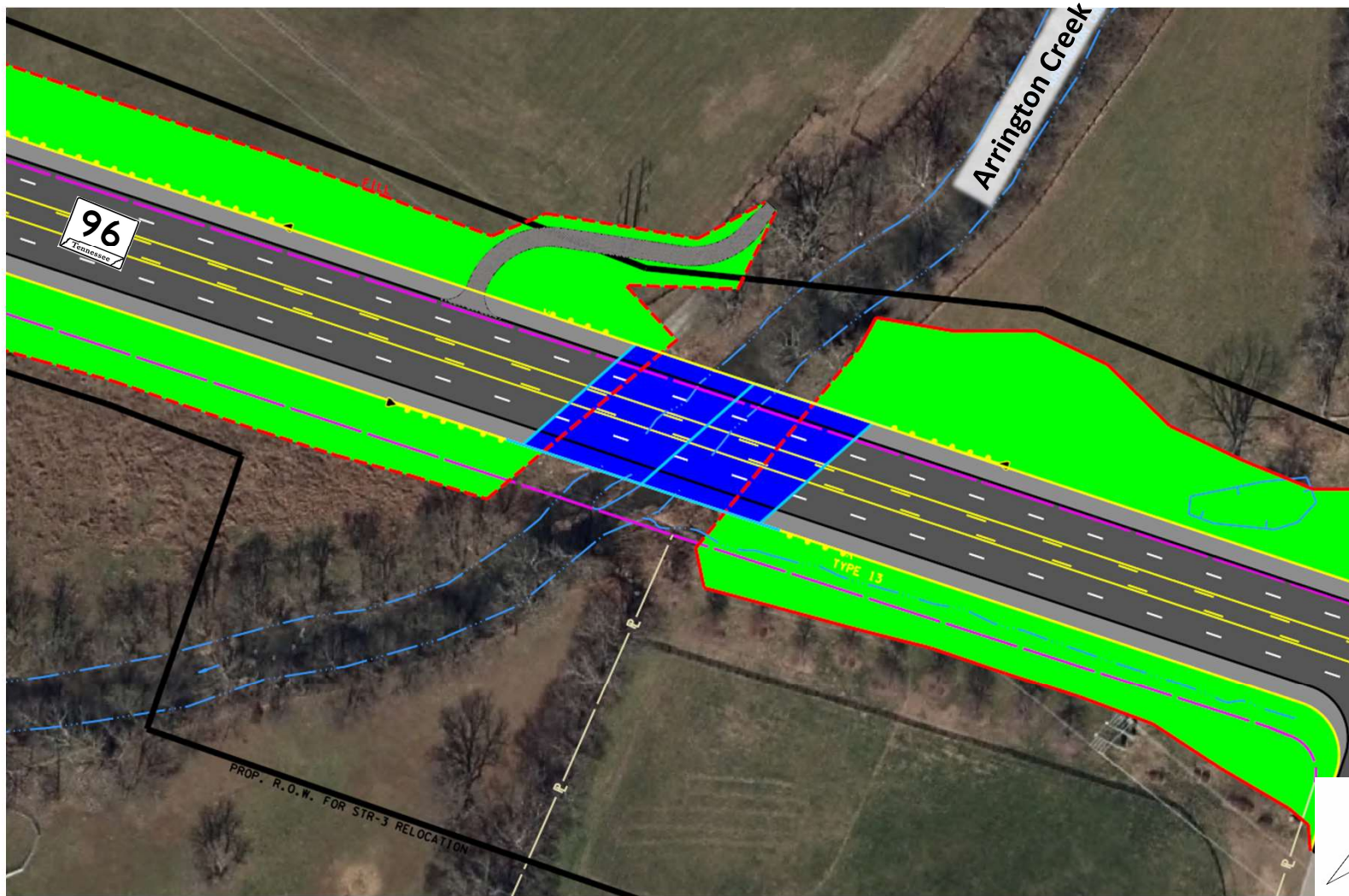
# Typical Sections: Proposed SR-11 at SR-96 Intersection



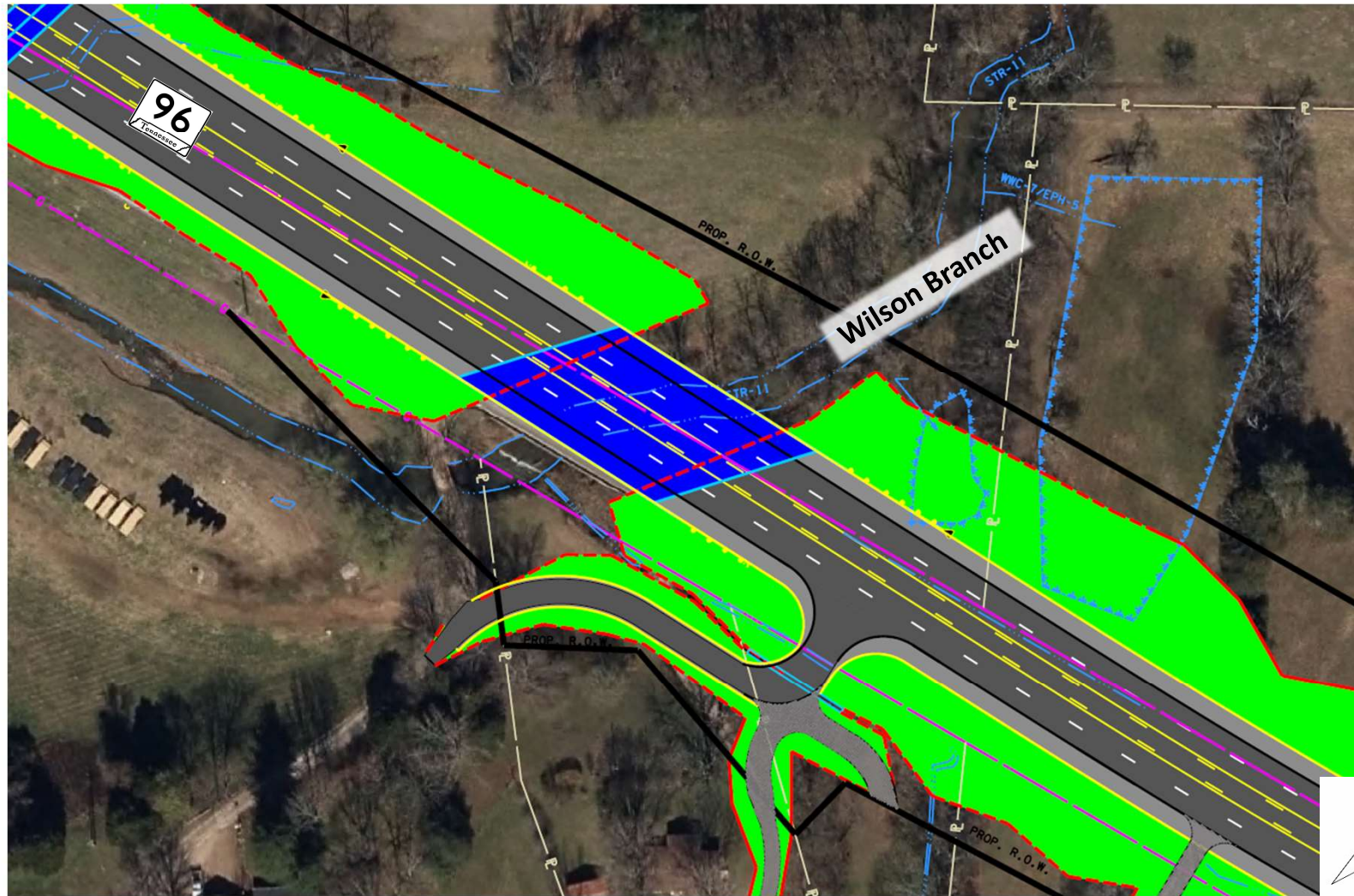
# Proposed Improvements

- Three major structures included in the project
  - Bridge over Arrington Creek
  - Bridge over Wilson Branch
  - Bridge over I-840

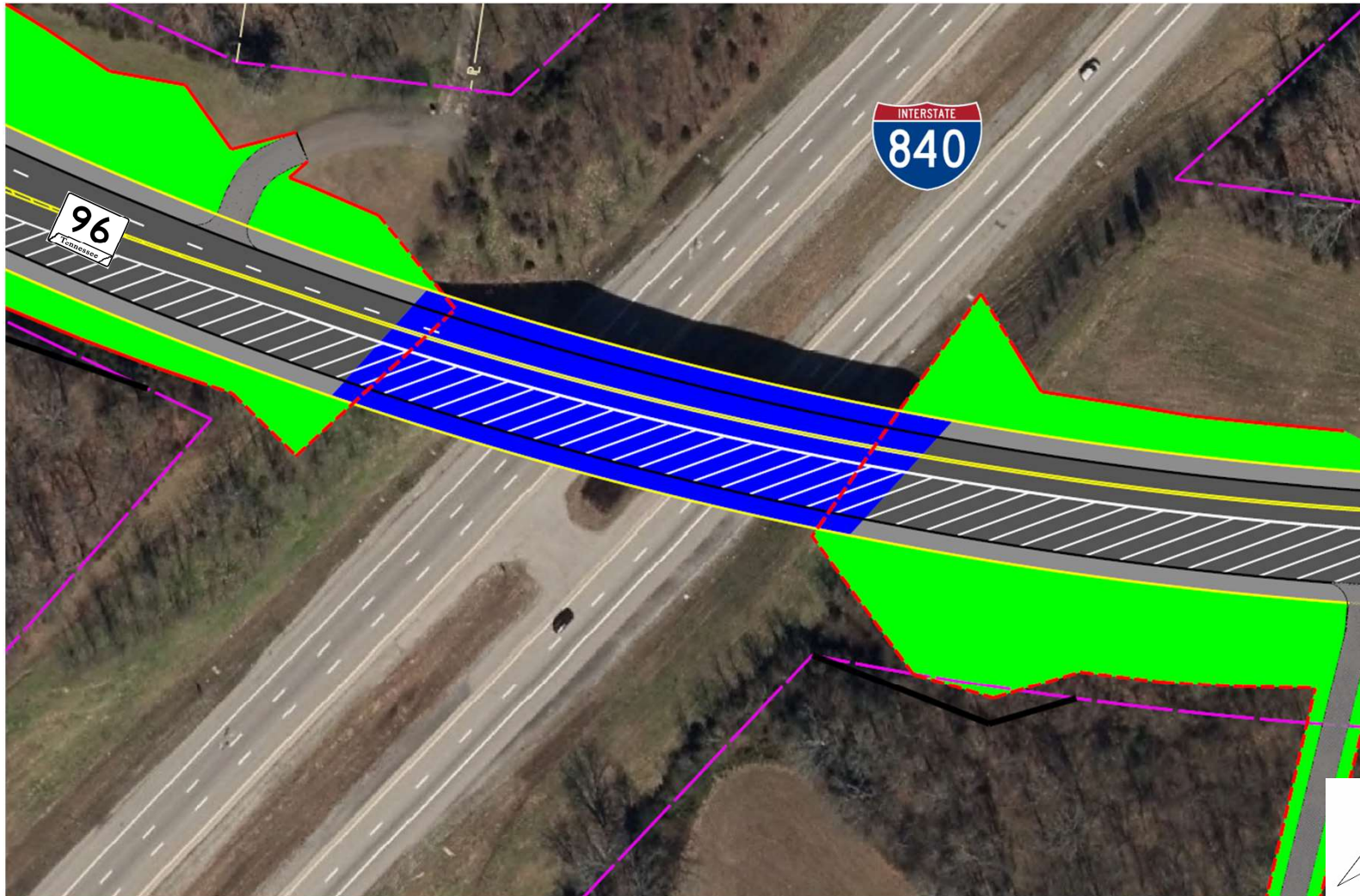
# Bridge Over Arrington Creek



# Bridge Over Wilson Branch



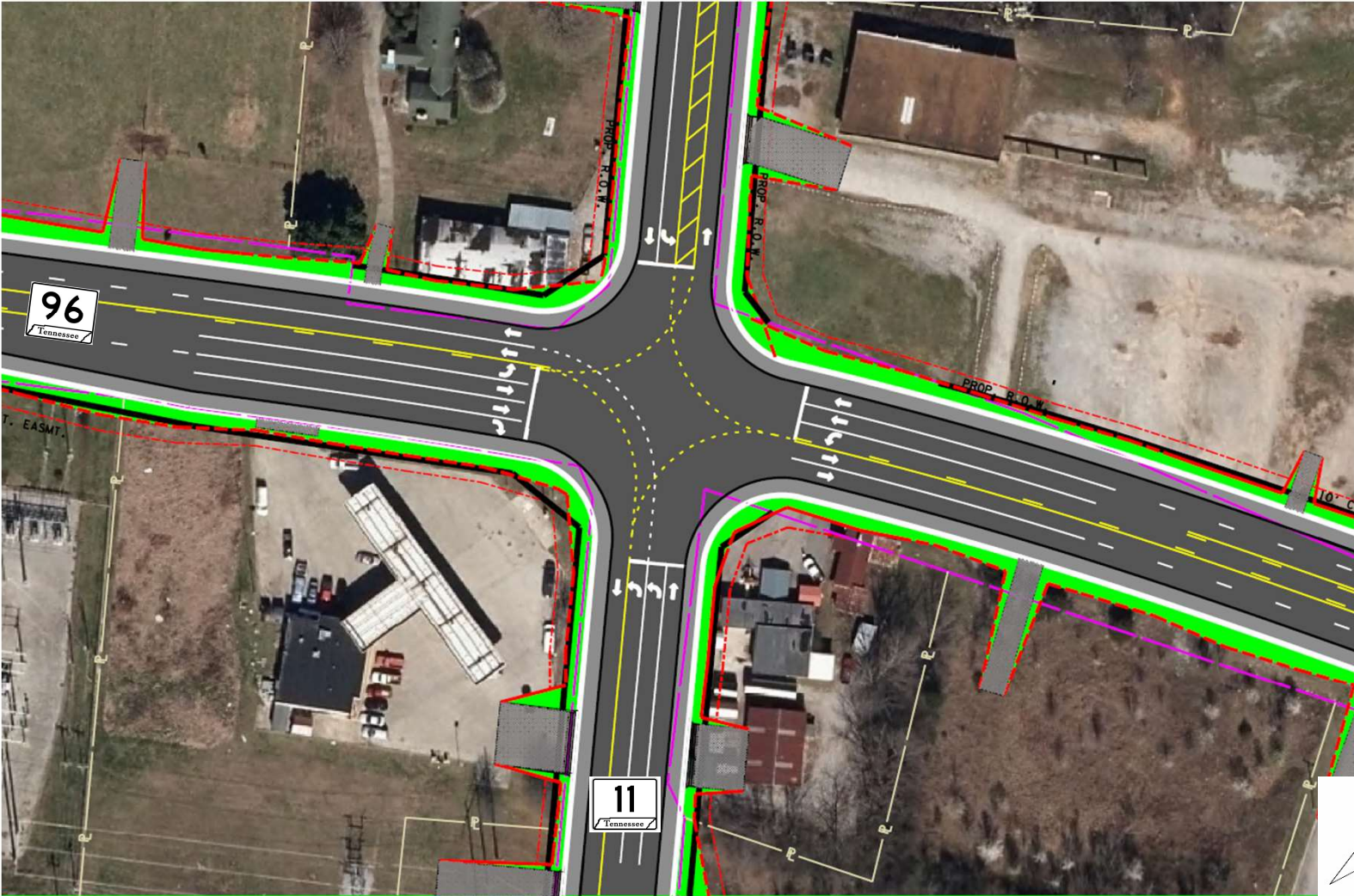
# Bridge Over I-840



# Proposed Intersections

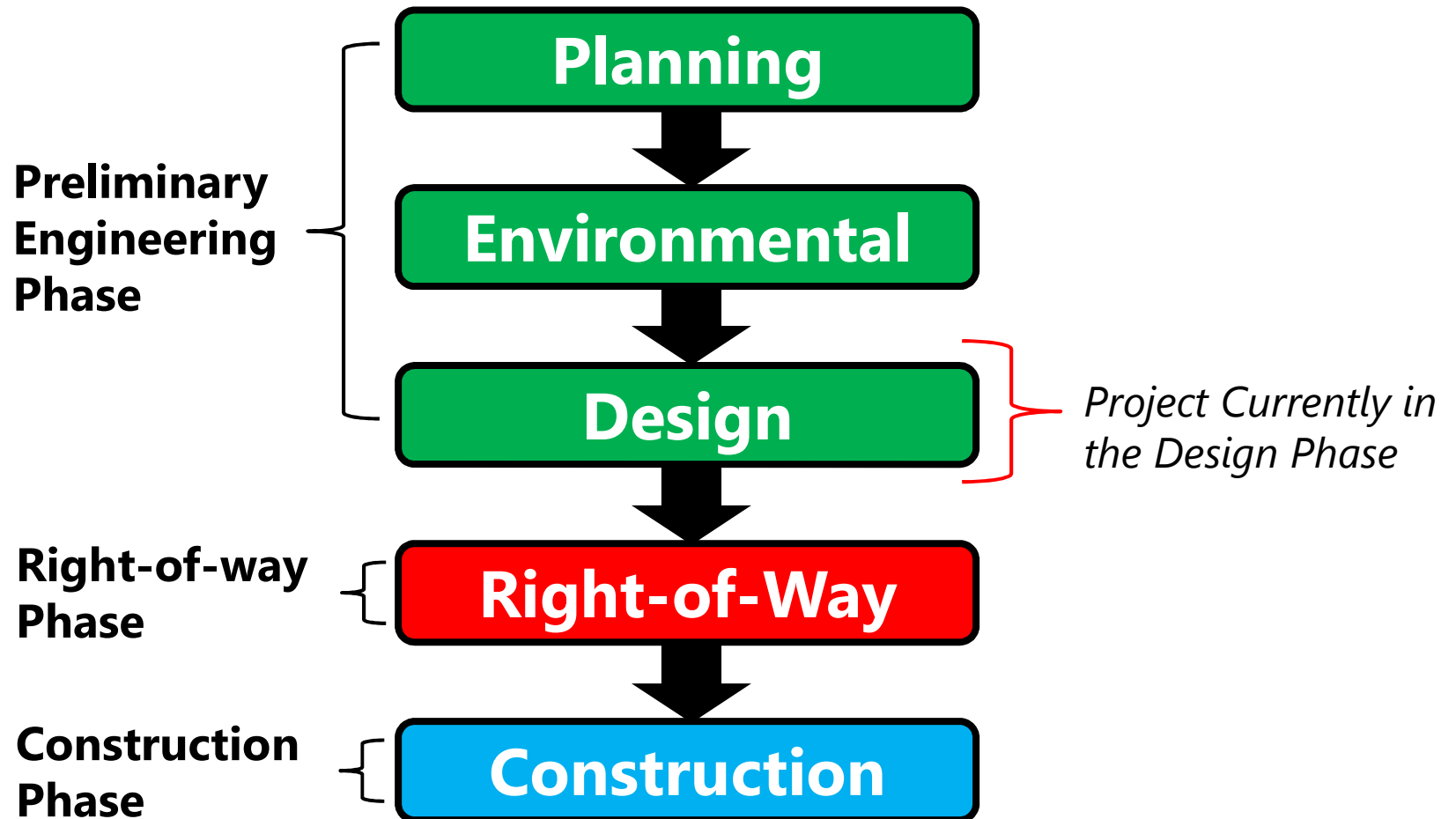
- SR-96 Intersections:
  - SR-11 (Nolensville Road)
  - Hawk's Landing Drive
  - Meadowbrook Boulevard
  - Frontage Road A
  - Old Murfreesboro Road
  - Hawkins Road
  - Haley Road
  - Newcastle Road
- SR-11 Intersections:
  - Old Murfreesboro Road (in Triune)
  - Neal Road
  - Malachi Lane
  - Frontage Road B

# SR-96 at SR-11 (Nolensville Road)





# Project Status



# Next Steps

- Address Public Comments
- Finalize Design for Right-of-Way
- Right-of-Way Appraisal and Acquisition
  - Begin Appraisal and Acquisition Process in Summer of 2020
    - ROW Neighborhood Meeting
    - ROW Process Completion Time – 30+ months
- Let to Construction
  - Once ROW Acquisition is Completed and Funds Budgeted for Construction

# Comments

## REMEMBER...

Your comments are very important to us!

### How to comment:

- Submit written comments on the provided comments cards
  - Fill out a comment card tonight
  - Take a comment card with you and mail it in within 21 days
  - Mail in a letter with your comments within 21 days
- Provide verbal comments to the court reporter
  - Comments will be included in the official record



# **THANK YOU!**

**For Your Attendance And Participation In  
the SR-96 Design Public Meeting**